



# Daily Electricity Generation & Cost Estimation Report

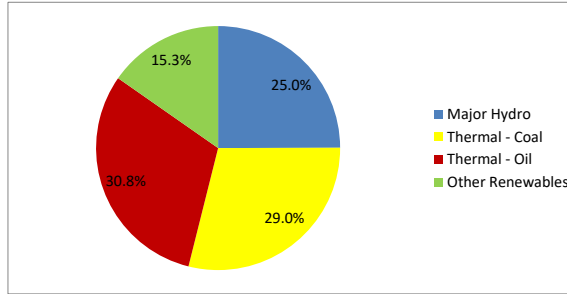


31st October 2024



**Daily Generation Mix -31st Oct 2024**

Plant Type	Generation (GWh)	Percentage
Major Hydro	11.20	25.0%
Thermal - Coal	12.99	29.0%
Thermal - Furnace Oil	10.25	22.9%
Thermal - Diesel	0.00	0.0%
Thermal - Naphtha	3.56	7.9%
Wind - CEB	0.17	0.4%
Wind - IPP	0.11	0.2%
Solar - IPP - Ground Mounted	0.67	1.5%
Solar - Roof Top	2.42	5.4%
Mini Hydro	3.14	7.0%
Municipal Solid Waste	0.35	0.8%
<b>Total</b>	<b>44.86</b>	



Note - Estimated generation from roof top solar, non-telemetered solar and mini hydro plants has been included in the above figures

**Estimated Generation Cost : 31st Oct 2024**

Plant Type	Energy Cost (Mn LKR )	Non Fuel Energy Cost (Mn LKR )	Capacity Cost (Mn LKR )	Total Cost of Generation (Mn LKR )	Energy Cost per Unit (LKR/kWh )	Non fuel Energy Cost per Unit (LKR/kWh)	Capacity Charge per Unit (LKR/kWh)	Cost of Electricity per Unit (LKR/kWh)
Major Hydro	0.0	0.0	38.8	38.8	0.00	0.00	3.47	3.47
Thermal - Coal	231.8	28.4	46.0	306.2	17.85	2.18	3.54	23.57
Thermal - Furnace Oil	471.1	9.7	51.9	532.8	45.95	0.95	5.07	51.96
Thermal - Diesel	0.0	1.5	20.4	21.9	0.00	0.00	0.00	0.00
Thermal - Naphtha	159.2	2.0	3.3	164.5	44.74	0.56	0.93	46.22
Wind - CEB	0.0	0.0	21.5	21.5	0.00	0.00	123.85	123.85
Wind - IPP	1.8	0.0	0.0	1.8	16.15	0.00	0.00	16.15
Solar - IPP - Ground Mounted	13.2	0.0	0.0	13.2	19.58	0.00	0.00	19.58
Solar - Roof Top	60.3	0.0	0.0	60.3	24.92	0.00	0.00	24.92
Mini Hydro	42.6	0.0	0.0	42.6	13.59	0.00	0.00	13.59
Municipal Solid Waste	13.6	0.0	0.0	13.6	39.00	0.00	0.00	39.00
<b>Total</b>	<b>993.6</b>	<b>41.5</b>	<b>182.1</b>	<b>1,217.2</b>	<b>22.15</b>	<b>0.93</b>	<b>4.06</b>	<b>27.13</b>

Note -

Start/Stop costs has been excluded in the calculation

Capacity cost is based on the approved BST submission.

Unit Cost of Generation for the day : **27.13 LKR/kWh**  
 Total Generation Cost for the day: **1217.22 Mn LKR**

**Fuel Prices**

( as at 17th Oct 2024)

	Price (LKR/Liter or LKR/kg)
Furnace	199.00
Coal	43.47
Naphtha	166.00
Auto Diesel	283.00

**Scheduled (Day Ahead) Generation Mix - 31st Oct 2024 (Excluding generation from non telemetered power plants)**

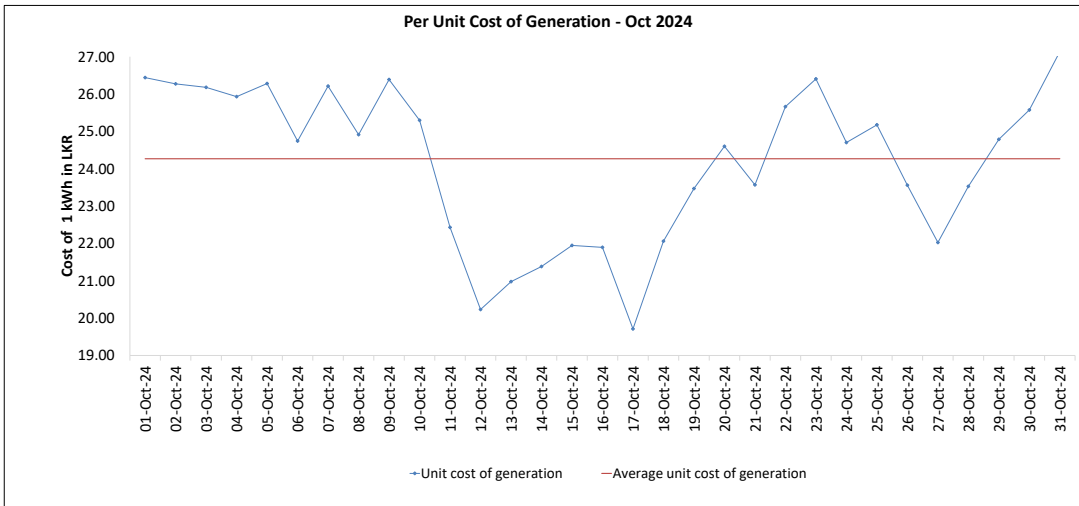
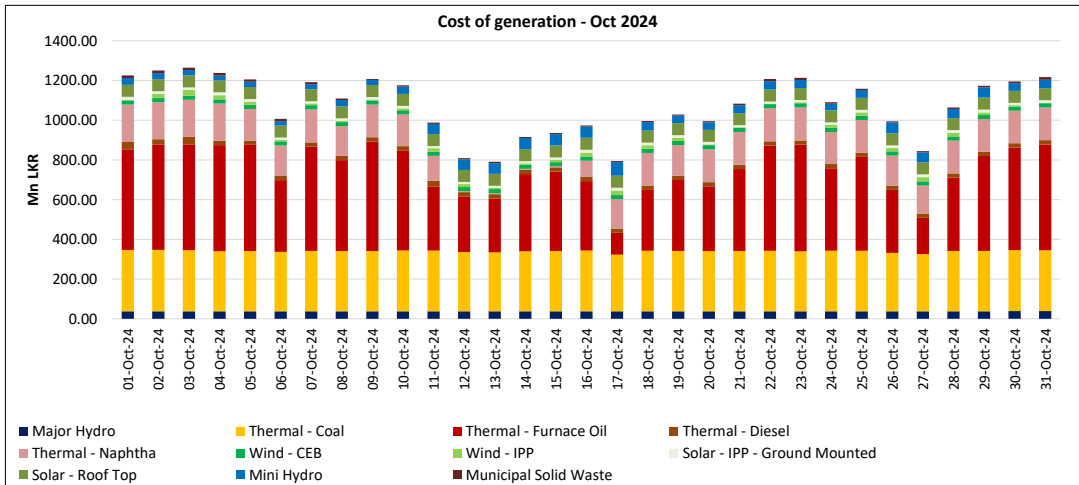
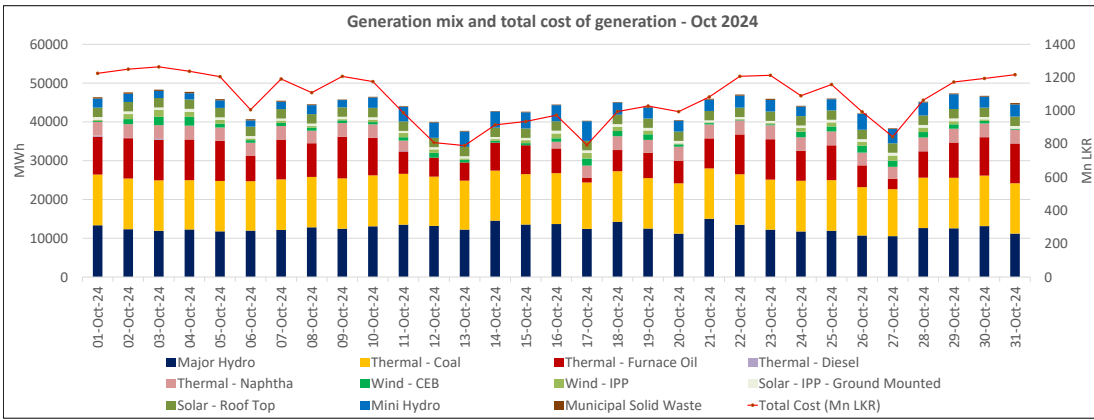
Plant Type	Generation (GWh)	Percentage
Major Hydro	11.4	26%
Thermal - Coal	13.0	30%
Thermal - Furnace Oil	10.4	24%
Thermal - Diesel	0.0	0%
Thermal - Naphtha	3.6	8%
Wind - CEB		
Wind - IPP	1.4	3%
BMP	0.2	2%
Solar	0.6	1%
Mini Hydro	3.3	8%
<b>Total</b>	<b>43.89</b>	

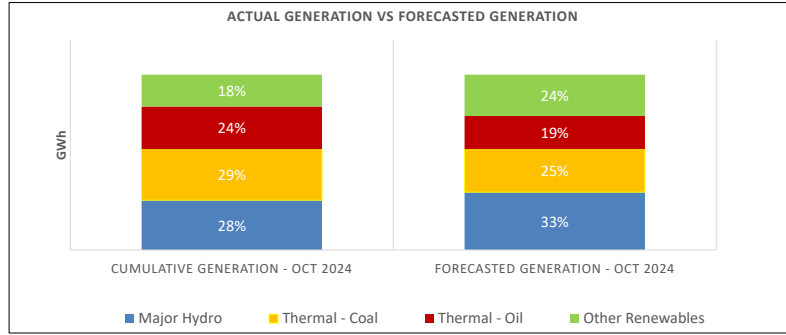
Estimated Generation Cost for the Scheduled Dispatch (Excluding non telemetered NCRE plants) **1,169 Mn LKR**

**Actual Generation Mix - 31st Oct 2024 (Excluding generation from non telemetered power plants)**

Plant Type	Generation (GWh)	Percentage
Major Hydro	11.2	26%
Thermal - Coal	13.0	31%
Thermal - Furnace Oil	10.3	24%
Thermal - Diesel	0.0	0%
Thermal - Naphtha	3.6	8%
Wind - CEB	0.2	0%
Wind - IPP	0.1	0%
BMP	0.3	0.8%
Solar	0.7	2%
Mini Hydro	3.0	7%
<b>Total</b>	<b>42.26</b>	

Estimated Generation Cost for the Actual Dispatch (Excluding non telemetered NCRE plants) **1,155 Mn LKR**





	Cumulative Generation - Oct 2024 [GWh]	Forecasted Generation - Oct 2024 [GWh]
Major Hydro	390	470
Thermal - Coal	400	350
Thermal - Oil	334	269
Other Renewables	250	336
<b>Total</b>	<b>1374</b>	<b>1425</b>

Forecasted Generation - SDDP Oct 2024

**Estimated Cost of Generation - Oct 2024 ( Mn LKR)**

Major Hydro	1,168 Mn LKR
Thermal - Coal	9,390 Mn LKR
Thermal - Furnace Oil	12,913 Mn LKR
Thermal - Diesel	707 Mn LKR
Thermal - Naphtha	4,338 Mn LKR
Wind - CEB	648 Mn LKR
Wind - IPP	386 Mn LKR
Solar - IPP - Ground Mounted	391 Mn LKR
Solar - Roof Top	1,869 Mn LKR
Mini Hydro	1,281 Mn LKR
Municipal Solid Waste	255 Mn LKR
<b>Total Generation Cost</b>	<b>33,346 Mn LKR</b>

Generation Energy Cost (Oct)	26,623 Mn LKR
*Generation Capacity Cost (Oct)	5,474 Mn LKR
Other Cost (Oct)	1,249 Mn LKR

Average Unit Cost of Generation (Oct) 24.27 LKR/kWh

Note -

\* Capacity cost is based on the approved BST submission.