



# Daily Electricity Generation & Cost Estimation Report

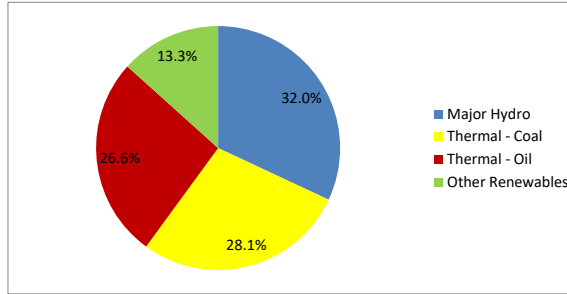
---

30th September 2024



**Daily Generation Mix -30th Sept 2024**

Plant Type	Generation (GWh)	Percentage
Major Hydro	14.78	32.0%
Thermal - Coal	12.99	28.1%
Thermal - Furnace Oil	9.83	21.3%
Thermal - Diesel	0.00	0.0%
Thermal - Naphtha	2.47	5.4%
Wind - CEB	0.24	0.5%
Wind - IPP	0.12	0.3%
Solar - IPP - Ground Mounted	0.60	1.3%
Solar - Roof Top	2.14	4.6%
Mini Hydro	2.74	5.9%
Municipal Solid Waste	0.34	0.7%
<b>Total</b>	<b>46.23</b>	



Note - Estimated generation from roof top solar, non-telemetered solar and mini hydro plants has been included in the above figures

**Estimated Generation Cost : 30th Sept 2024**

Plant Type	Energy Cost (Mn LKR )	Non Fuel Energy Cost (Mn LKR )	Capacity Cost (Mn LKR )	Total Cost of Generation (Mn LKR )	Energy Cost per Unit (LKR/kWh )	Non fuel Energy Cost per Unit (LKR/kWh)	Capacity Charge per Unit (LKR/kWh)	Cost of Electricity per Unit (LKR/kWh)
Major Hydro	0.0	0.0	38.0	38.0	0.00	0.00	2.57	2.57
Thermal - Coal	237.3	28.4	44.5	310.1	18.27	2.18	3.43	23.88
Thermal - Furnace Oil	446.3	9.7	51.7	507.7	45.41	0.99	5.26	51.66
Thermal - Diesel	0.0	1.5	20.0	21.5	0.00	0.00	0.00	0.00
Thermal - Naphtha	131.4	2.0	3.3	136.7	53.11	0.80	1.33	55.24
Wind - CEB	0.0	0.0	21.5	21.5	0.00	0.00	91.65	91.65
Wind - IPP	1.9	0.0	0.0	1.9	16.12	0.00	0.00	16.12
Solar - IPP - Ground Mounted	11.7	0.0	0.0	11.7	19.50	0.00	0.00	19.50
Solar - Roof Top	53.3	0.0	0.0	53.3	24.92	0.00	0.00	24.92
Mini Hydro	40.0	0.0	0.0	40.0	14.61	0.00	0.00	14.61
Municipal Solid Waste	13.3	0.0	0.0	13.3	39.30	0.00	0.00	39.30
<b>Total</b>	<b>935.2</b>	<b>41.5</b>	<b>179.0</b>	<b>1155.7</b>	<b>20.23</b>	<b>0.90</b>	<b>3.87</b>	<b>25.00</b>

Note -

Start/Stop costs has been excluded in the calculation

Capacity cost is based on the approved BST submission.

Unit Cost of Generation for the day : **25.00 LKR/kWh**  
 Total Generation Cost for the day: **1155.70 Mn LKR**

**Fuel Prices**

( as at 27th Sept 2024)

	Price (LKR/Liter or LKR/kg)
Furnace	191.00
Coal	44.50
Naphtha	197.06
Auto Diesel	307.00

**Scheduled (Day Ahead) Generation Mix - 30th Sept 2024 (Excluding generation from non telemetered power plants)**

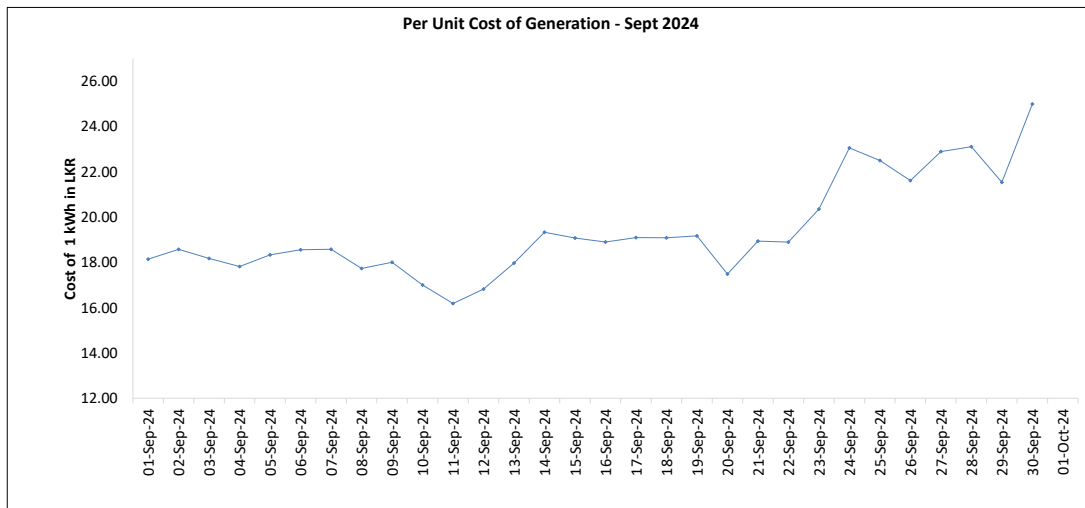
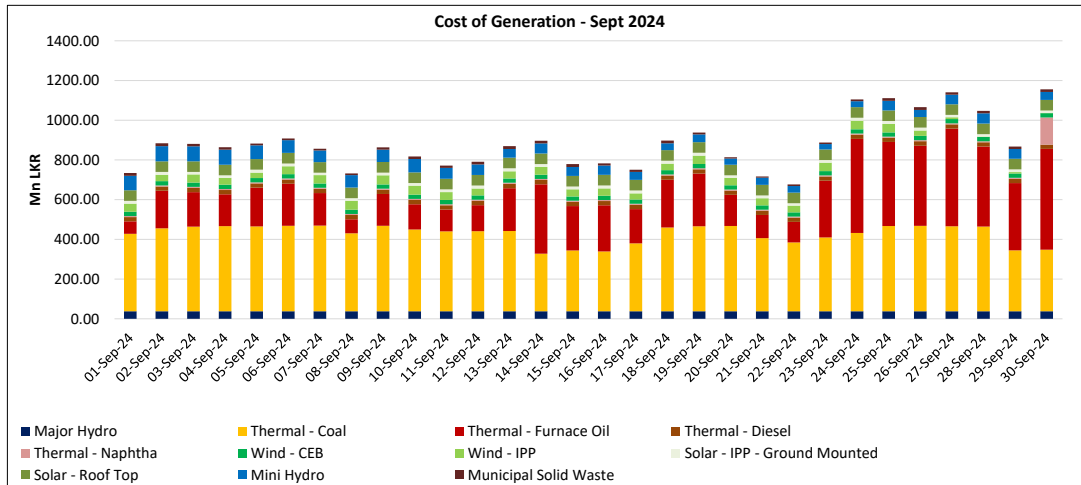
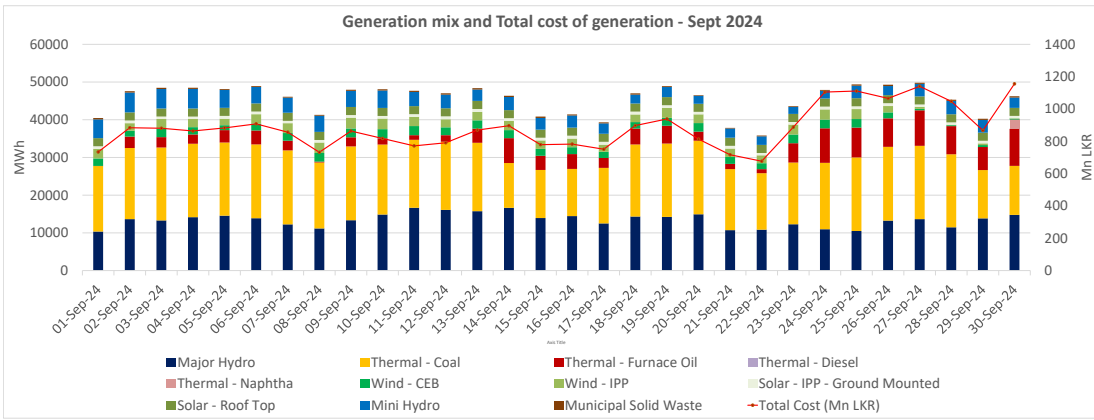
Plant Type	Generation (GWh)	Percentage
Major Hydro	12.9	30%
Thermal - Coal	13.0	30%
Thermal - Furnace Oil	9.8	22%
Thermal - Diesel	1.6	4%
Thermal - Naphtha	2.9	7%
Wind - CEB	0.1	0%
Wind - IPP	0.1	0%
Solar	0.4	1%
Mini Hydro	2.78	6%
<b>Total</b>	<b>43.46</b>	

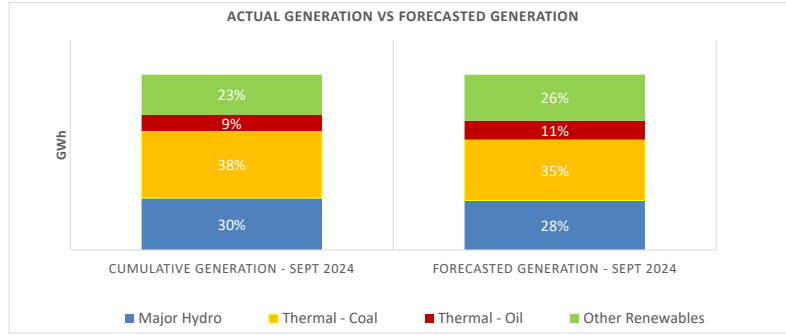
Estimated Generation Cost for the Scheduled Dispatch (Excluding non telemetered NCRE plants) **1297.26 Mn LKR**

**Actual Generation Mix - 30th Sept 2024 (Excluding generation from non telemetered power plants)**

Plant Type	Generation (GWh)	Percentage
Major Hydro	14.8	34%
Thermal - Coal	13.0	30%
Thermal - Furnace Oil	9.8	23%
Thermal - Diesel	0.00	0%
Thermal - Naphtha	2.5	6%
Wind - CEB	0.2	1%
Wind - IPP	0.1	0%
Solar	0.6	1%
Mini Hydro	2.6	6%
<b>Total</b>	<b>43.60</b>	

Estimated Generation Cost for the Actual Dispatch (Excluding non telemetered NCRE plants) **1086.75 Mn LKR**





	Cumulative Generation - Sept 2024 [GWh]	Forecasted Generation - Sept 2024 [GWh]
Major Hydro	403	389
Thermal - Coal	522	479
Thermal - Oil	125	148
Other Renewables	314	362
<b>Total</b>	<b>1364</b>	<b>1377</b>

Forecasted Generation - SDDP Sept 2024

**Estimated Cost of Generation - Sept 2024 ( Mn LKR)**

Major Hydro	1138.58 Mn LKR
Thermal - Coal	11728.14 Mn LKR
Thermal - Furnace Oil	7157.40 Mn LKR
Thermal - Diesel	647.36 Mn LKR
Thermal - Naphtha	289.87 Mn LKR
Wind - CEB	646.16 Mn LKR
Wind - IPP	1005.11 Mn LKR
Solar - IPP - Ground Mounted	412.37 Mn LKR
Solar - Roof Top	1599.72 Mn LKR
Mini Hydro	1524.03 Mn LKR
Municipal Solid Waste	338.47 Mn LKR
<b>Total Generation Cost</b>	<b>26,487.19 Mn LKR</b>

Generation Energy Cost (Sept)	19,871.10 Mn LKR
*Generation Capacity Cost (Sept)	5,369.87 Mn LKR
Other Cost (Sept)	1,246.23 Mn LKR

**Average Unit Cost of Generation (Sept) 19.41 LKR/kWh**

Note -

\* Capacity cost is based on the approved BST submission.