



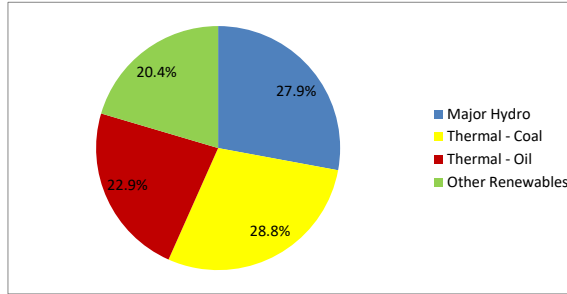
Daily Electricity Generation & Cost Estimation Report

28th October 2024



Daily Generation Mix -28th Oct 2024

Plant Type	Generation (GWh)	Percentage
Major Hydro	12.62	27.9%
Thermal - Coal	13.01	28.8%
Thermal - Furnace Oil	6.78	15.0%
Thermal - Diesel	0.00	0.0%
Thermal - Naphtha	3.58	7.9%
Wind - CEB	1.40	3.1%
Wind - IPP	1.13	2.5%
Solar - IPP - Ground Mounted	0.70	1.5%
Solar - Roof Top	2.42	5.4%
Mini Hydro	3.40	7.5%
Municipal Solid Waste	0.18	0.4%
Total	45.23	



Note - Estimated generation from roof top solar, non-telemetered solar and mini hydro plants has been included in the above figures

Estimated Generation Cost : 28th Oct 2024

Plant Type	Energy Cost (Mn LKR)	Non Fuel Energy Cost (Mn LKR)	Capacity Cost (Mn LKR)	Total Cost of Generation (Mn LKR)	Energy Cost per Unit (LKR/kWh)	Non fuel Energy Cost per Unit (LKR/kWh)	Capacity Charge per Unit (LKR/kWh)	Cost of Electricity per Unit (LKR/kWh)
Major Hydro	0.0	0.0	37.6	37.6	0.00	0.00	2.98	2.98
Thermal - Coal	232.1	27.5	44.5	304.1	17.85	2.11	3.43	23.38
Thermal - Furnace Oil	309.7	9.4	50.3	369.4	45.66	1.38	7.41	54.45
Thermal - Diesel	0.0	1.5	19.8	21.2	0.00	0.00	0.00	0.00
Thermal - Naphtha	160.1	1.9	3.2	165.2	44.74	0.54	0.89	46.17
Wind - CEB	0.0	0.0	20.9	20.9	0.00	0.00	14.92	14.92
Wind - IPP	18.3	0.0	0.0	18.3	16.15	0.00	0.00	16.15
Solar - IPP - Ground Mounted	13.7	0.0	0.0	13.7	19.58	0.00	0.00	19.58
Solar - Roof Top	60.3	0.0	0.0	60.3	24.92	0.00	0.00	24.92
Mini Hydro	46.2	0.0	0.0	46.2	13.59	0.00	0.00	13.59
Municipal Solid Waste	7.2	0.0	0.0	7.2	39.00	0.00	0.00	39.00
Total	847.7	40.2	176.2	1064.1	18.74	0.89	3.90	23.53

Note -

Start/Stop costs has been excluded in the calculation

Capacity cost is based on the approved BST submission.

Unit Cost of Generation for the day : **23.53 LKR/kWh**
 Total Generation Cost for the day: **1064.05 Mn LKR**

Fuel Prices

(as at 17th Oct 2024)

	Price (LKR/Liter or LKR/kg)
Furnace	199.00
Coal	43.47
Naphtha	166.00
Auto Diesel	283.00

Scheduled (Day Ahead) Generation Mix - 28th Oct 2024 (Excluding generation from non telemetered power plants)

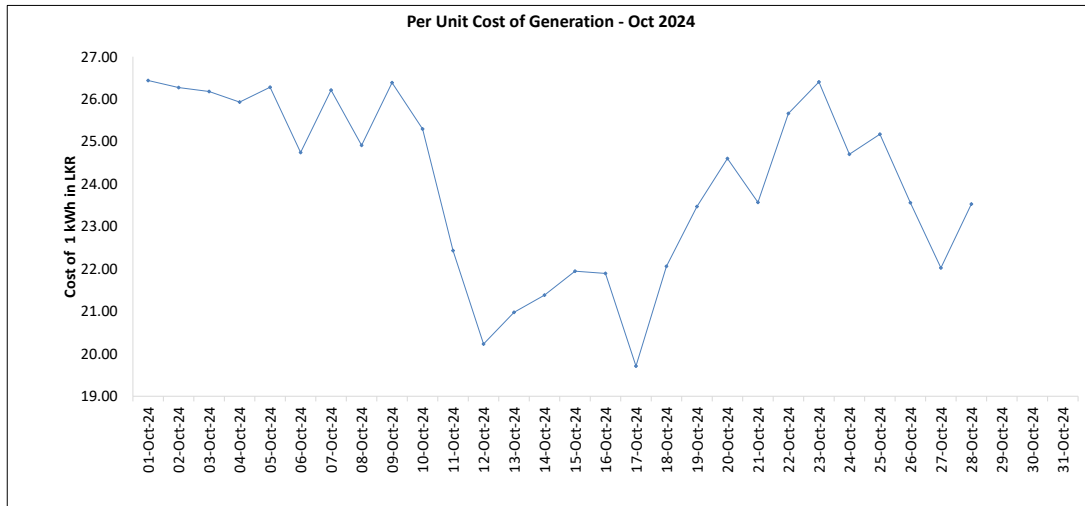
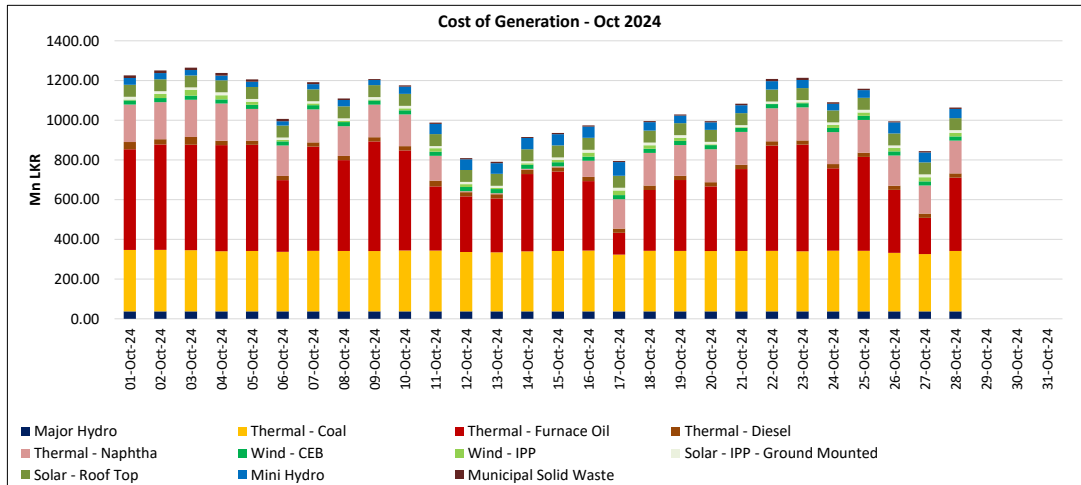
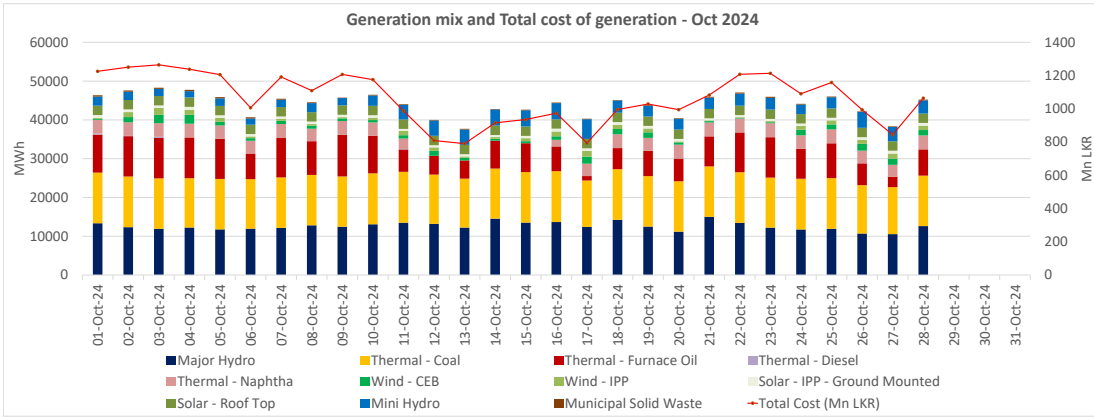
Plant Type	Generation (GWh)	Percentage
Major Hydro	11.4	28%
Thermal - Coal	13.0	31%
Thermal - Furnace Oil	7.5	18%
Thermal - Diesel	0.0	0%
Thermal - Naphtha	3.6	9%
Wind - CEB	1.0	2%
Wind - IPP	0.1	1%
BMP	0.6	1%
Solar	4.3	10%
Mini Hydro		
Total	41.36	

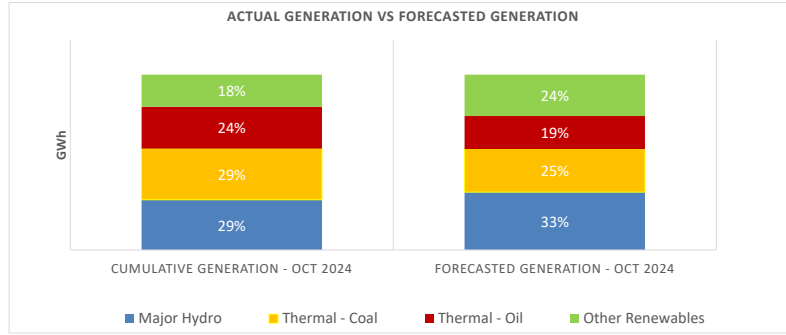
Estimated Generation Cost for the Scheduled Dispatch (Excluding non telemetered NCRE plants) **1034.33 Mn LKR**

Actual Generation Mix - 28th Oct 2024 (Excluding generation from non telemetered power plants)

Plant Type	Generation (GWh)	Percentage
Major Hydro	12.6	30%
Thermal - Coal	13.0	31%
Thermal - Furnace Oil	6.8	16%
Thermal - Diesel	0.00	0%
Thermal - Naphtha	3.6	8%
Wind - CEB	1.4	3%
Wind - IPP	1.1	3%
BMP	0.2	0.4%
Solar	0.7	2%
Mini Hydro	3.2	8%
Total	42.61	

Estimated Generation Cost for the Actual Dispatch (Excluding non telemetered NCRE plants) **1001.14 Mn LKR**





	Cumulative Generation - Oct 2024 [GWh]	Forecasted Generation - Oct 2024 [GWh]
Major Hydro	353	470
Thermal - Coal	361	350
Thermal - Oil	294	269
Other Renewables	227	336
Total	1235	1425

Forecasted Generation - SDDP Oct 2024

Estimated Cost of Generation - Oct 2024 (Mn LKR)

Major Hydro	1052.53 Mn LKR
Thermal - Coal	8472.32 Mn LKR
Thermal - Furnace Oil	11386.67 Mn LKR
Thermal - Diesel	642.03 Mn LKR
Thermal - Naphtha	3845.42 Mn LKR
Wind - CEB	583.92 Mn LKR
Wind - IPP	364.75 Mn LKR
Solar - IPP - Ground Mounted	351.35 Mn LKR
Solar - Roof Top	1688.42 Mn LKR
Mini Hydro	1147.63 Mn LKR
Municipal Solid Waste	224.82 Mn LKR
Total Generation Cost	29,759.85 Mn LKR

Generation Energy Cost (Oct) 23,700.56 Mn LKR

*Generation Capacity Cost (Oct) 4,933.66 Mn LKR

Other Cost (Oct) 1,125.63 Mn LKR

Average Unit Cost of Generation (Oct) 24.09 LKR/kWh

Note -

* Capacity cost is based on the approved BST submission.