



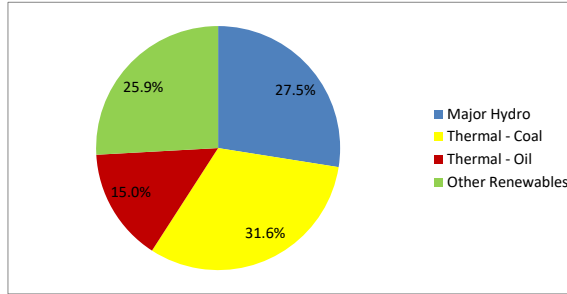
Daily Electricity Generation & Cost Estimation Report

27th October 2024



Daily Generation Mix -27th Oct 2024

Plant Type	Generation (GWh)	Percentage
Major Hydro	10.54	27.5%
Thermal - Coal	12.12	31.6%
Thermal - Furnace Oil	2.71	7.1%
Thermal - Diesel	0.00	0.0%
Thermal - Naphtha	3.05	8.0%
Wind - CEB	1.60	4.2%
Wind - IPP	1.30	3.4%
Solar - IPP - Ground Mounted	0.74	1.9%
Solar - Roof Top	2.42	6.3%
Mini Hydro	3.70	9.6%
Municipal Solid Waste	0.16	0.4%
Total	38.34	



Note - Estimated generation from roof top solar, non-telemetered solar and mini hydro plants has been included in the above figures

Estimated Generation Cost : 27th Oct 2024

Plant Type	Energy Cost (Mn LKR)	Non Fuel Energy Cost (Mn LKR)	Capacity Cost (Mn LKR)	Total Cost of Generation (Mn LKR)	Energy Cost per Unit (LKR/kWh)	Non fuel Energy Cost per Unit (LKR/kWh)	Capacity Charge per Unit (LKR/kWh)	Cost of Electricity per Unit (LKR/kWh)
Major Hydro	0.0	0.0	37.6	37.6	0.00	0.00	3.57	3.57
Thermal - Coal	216.3	27.5	44.5	288.3	17.85	2.27	3.68	23.79
Thermal - Furnace Oil	123.0	9.4	50.3	182.7	45.44	3.46	18.57	67.48
Thermal - Diesel	0.0	1.5	19.8	21.2	0.00	0.00	0.00	0.00
Thermal - Naphtha	136.4	1.9	3.2	141.5	44.74	0.63	1.05	46.41
Wind - CEB	0.0	0.0	20.9	20.9	0.00	0.00	13.02	13.02
Wind - IPP	21.0	0.0	0.0	21.0	16.15	0.00	0.00	16.15
Solar - IPP - Ground Mounted	14.5	0.0	0.0	14.5	19.58	0.00	0.00	19.58
Solar - Roof Top	60.3	0.0	0.0	60.3	24.92	0.00	0.00	24.92
Mini Hydro	50.2	0.0	0.0	50.2	13.59	0.00	0.00	13.59
Municipal Solid Waste	6.2	0.0	0.0	6.2	39.00	0.00	0.00	39.00
Total	627.9	40.2	176.2	844.3	16.38	1.05	4.60	22.02

Note -

Start/Stop costs has been excluded in the calculation

Capacity cost is based on the approved BST submission.

Unit Cost of Generation for the day : **22.02 LKR/kWh**
 Total Generation Cost for the day: **844.30 Mn LKR**

Fuel Prices

(as at 17th Oct 2024)

	Price (LKR/Liter or LKR/kg)
Furnace	199.00
Coal	43.47
Naphtha	166.00
Auto Diesel	283.00

Scheduled (Day Ahead) Generation Mix - 27th Oct 2024 (Excluding generation from non telemetered power plants)

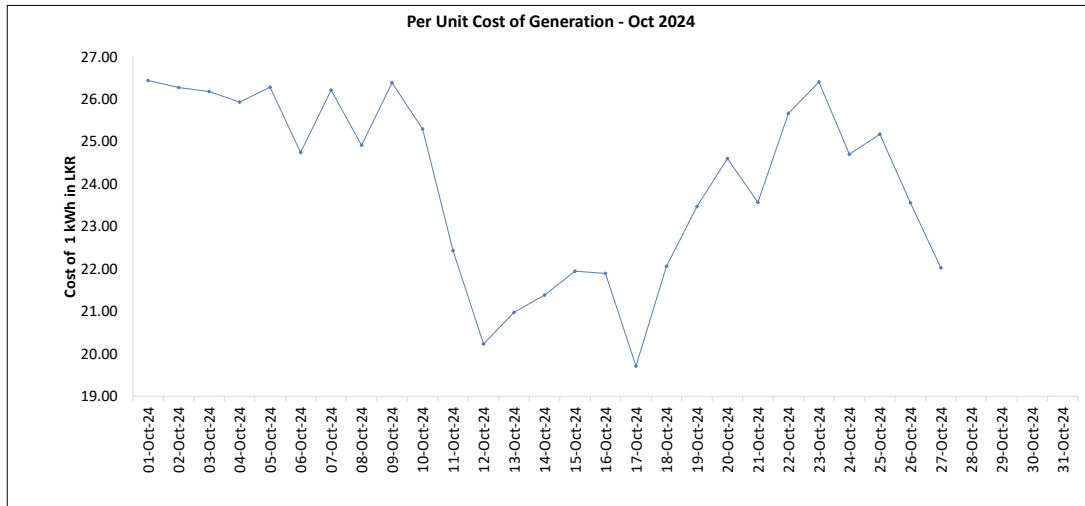
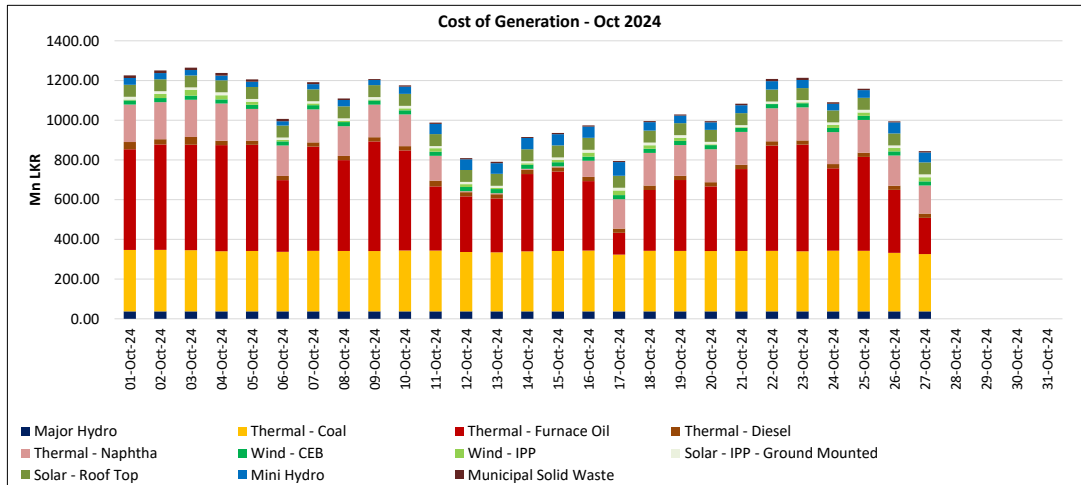
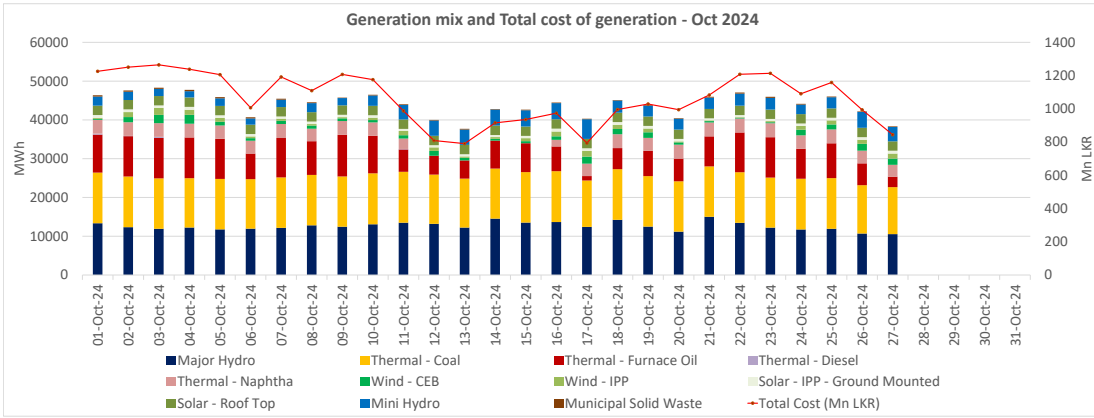
Plant Type	Generation (GWh)	Percentage
Major Hydro	10.7	29%
Thermal - Coal	11.8	32%
Thermal - Furnace Oil	6.3	17%
Thermal - Diesel	0.0	0%
Thermal - Naphtha	3.5	9%
Wind - CEB	1.2	3%
Wind - IPP		
BMP	0.2	2%
Solar	0.5	1%
Mini Hydro	2.7	7%
Total	36.80	

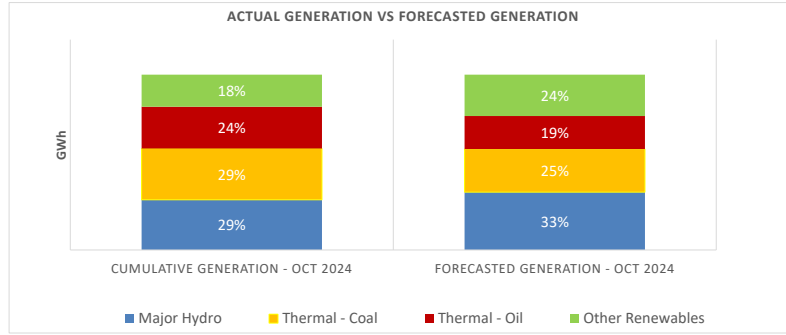
Actual Generation Mix - 27th Oct 2024 (Excluding generation from non telemetered power plants)

Plant Type	Generation (GWh)	Percentage
Major Hydro	10.5	30%
Thermal - Coal	12.1	34%
Thermal - Furnace Oil	2.7	8%
Thermal - Diesel	0.00	0%
Thermal - Naphtha	3.0	9%
Wind - CEB	1.6	4%
Wind - IPP	1.3	4%
BMP	0.2	0.4%
Solar	0.7	2%
Mini Hydro	3.5	10%
Total	35.71	

Estimated Generation Cost for the Scheduled Dispatch (Excluding non telemetered NCRE plants) **932.38 Mn LKR**

Estimated Generation Cost for the Actual Dispatch (Excluding non telemetered NCRE plants) **781.16 Mn LKR**





	Cumulative Generation - Oct 2024 [GWh]	Forecasted Generation - Oct 2024 [GWh]
Major Hydro	341	470
Thermal - Coal	348	350
Thermal - Oil	284	269
Other Renewables	217	336
Total	1190	1425

Forecasted Generation - SDDP Oct 2024

Estimated Cost of Generation - Oct 2024 (Mn LKR)

Major Hydro	1014.94 Mn LKR
Thermal - Coal	8168.23 Mn LKR
Thermal - Furnace Oil	11017.30 Mn LKR
Thermal - Diesel	620.82 Mn LKR
Thermal - Naphtha	3680.19 Mn LKR
Wind - CEB	563.06 Mn LKR
Wind - IPP	346.44 Mn LKR
Solar - IPP - Ground Mounted	337.62 Mn LKR
Solar - Roof Top	1628.12 Mn LKR
Mini Hydro	1101.43 Mn LKR
Municipal Solid Waste	217.64 Mn LKR
Total Generation Cost	28,695.80 Mn LKR

Generation Energy Cost (Oct)	22,852.91 Mn LKR
*Generation Capacity Cost (Oct)	4,757.46 Mn LKR
Other Cost (Oct)	1,085.42 Mn LKR

Average Unit Cost of Generation (Oct) 24.12 LKR/kWh

Note -

* Capacity cost is based on the approved BST submission.