



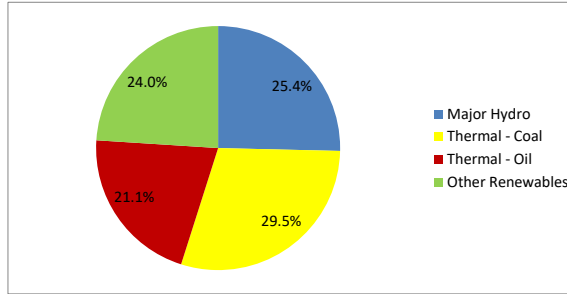
Daily Electricity Generation & Cost Estimation Report

26th October 2024



Daily Generation Mix -26th Oct 2024

Plant Type	Generation (GWh)	Percentage
Major Hydro	10.71	25.4%
Thermal - Coal	12.46	29.5%
Thermal - Furnace Oil	5.63	13.3%
Thermal - Diesel	0.00	0.0%
Thermal - Naphtha	3.28	7.8%
Wind - CEB	1.75	4.2%
Wind - IPP	1.04	2.5%
Solar - IPP - Ground Mounted	0.68	1.6%
Solar - Roof Top	2.42	5.7%
Mini Hydro	4.10	9.7%
Municipal Solid Waste	0.13	0.3%
Total	42.20	



Note - Estimated generation from roof top solar, non-telemetered solar and mini hydro plants has been included in the above figures

Estimated Generation Cost : 26th Oct 2024

Plant Type	Energy Cost (Mn LKR)	Non Fuel Energy Cost (Mn LKR)	Capacity Cost (Mn LKR)	Total Cost of Generation (Mn LKR)	Energy Cost per Unit (LKR/kWh)	Non fuel Energy Cost per Unit (LKR/kWh)	Capacity Charge per Unit (LKR/kWh)	Cost of Electricity per Unit (LKR/kWh)
Major Hydro	0.0	0.0	37.6	37.6	0.00	0.00	3.51	3.51
Thermal - Coal	222.4	27.5	44.5	294.4	17.85	2.20	3.57	23.62
Thermal - Furnace Oil	257.5	9.4	50.3	317.2	45.77	1.67	8.93	56.37
Thermal - Diesel	0.0	1.5	19.8	21.2	0.00	0.00	0.00	0.00
Thermal - Naphtha	146.8	1.9	3.2	151.9	44.74	0.58	0.97	46.30
Wind - CEB	0.0	0.0	20.9	20.9	0.00	0.00	11.89	11.89
Wind - IPP	16.8	0.0	0.0	16.8	16.15	0.00	0.00	16.15
Solar - IPP - Ground Mounted	13.3	0.0	0.0	13.3	19.58	0.00	0.00	19.58
Solar - Roof Top	60.3	0.0	0.0	60.3	24.92	0.00	0.00	24.92
Mini Hydro	55.7	0.0	0.0	55.7	13.59	0.00	0.00	13.59
Municipal Solid Waste	5.0	0.0	0.0	5.0	39.00	0.00	0.00	39.00
Total	777.9	40.2	176.2	994.3	18.43	0.95	4.18	23.56

Note -

Start/Stop costs has been excluded in the calculation

Capacity cost is based on the approved BST submission.

Unit Cost of Generation for the day : **23.56 LKR/kWh**
 Total Generation Cost for the day: **994.27 Mn LKR**

Fuel Prices

(as at 17th Oct 2024)

	Price (LKR/Liter or LKR/kg)
Furnace	199.00
Coal	43.47
Naphtha	166.00
Auto Diesel	283.00

Scheduled (Day Ahead) Generation Mix - 26th Oct 2024 (Excluding generation from non telemetered power plants)

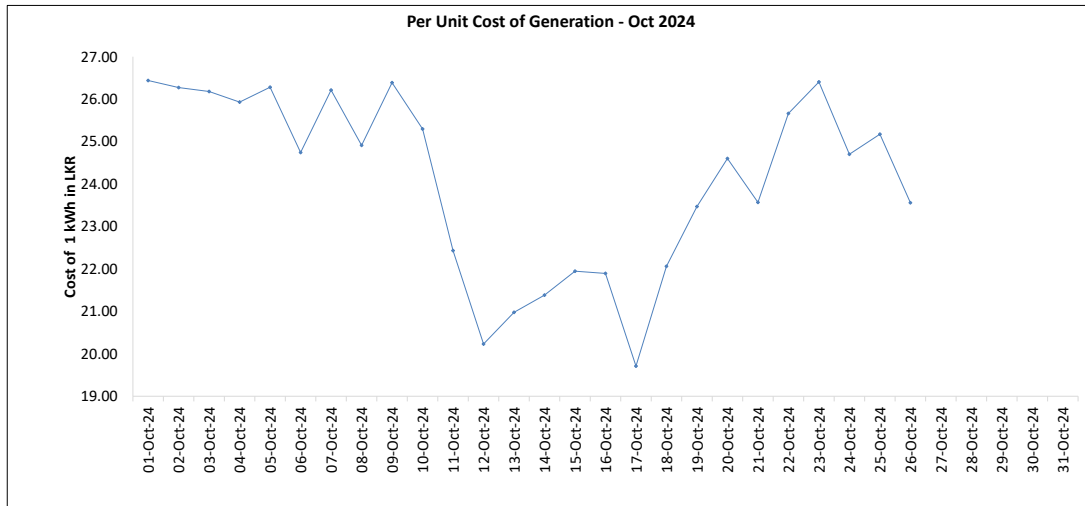
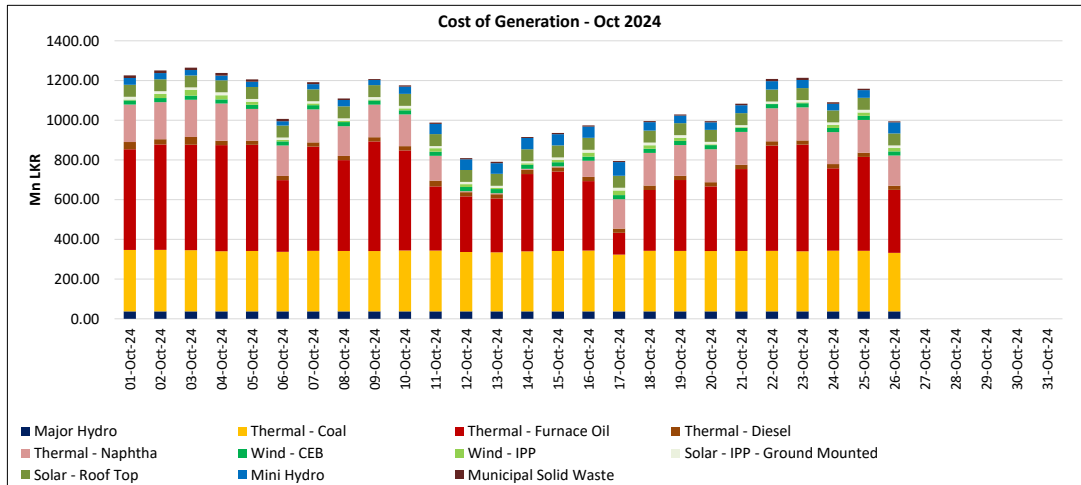
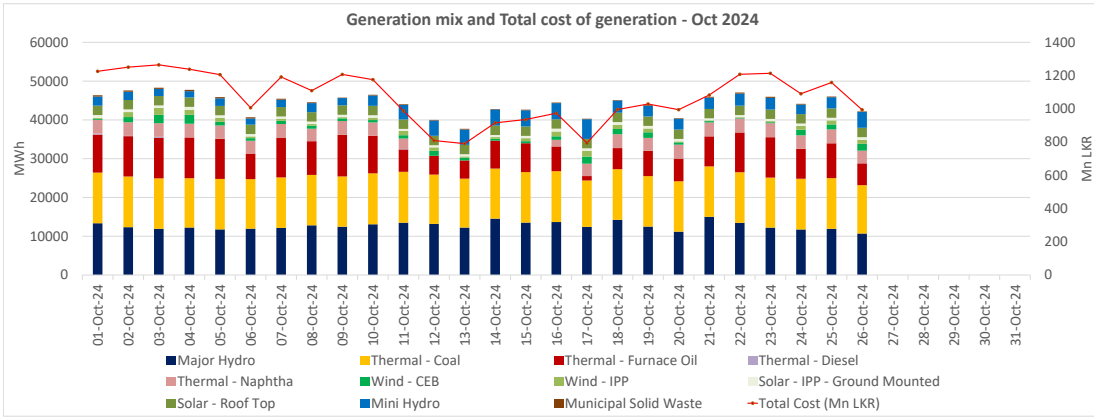
Plant Type	Generation (GWh)	Percentage
Major Hydro	9.9	24%
Thermal - Coal	13.0	32%
Thermal - Furnace Oil	9.3	23%
Thermal - Diesel	0.0	0%
Thermal - Naphtha	3.6	9%
Wind - CEB	1.4	4%
Wind - IPP	0.3	2%
BMP	0.3	1%
Solar	3.1	8%
Mini Hydro		
Total	40.95	

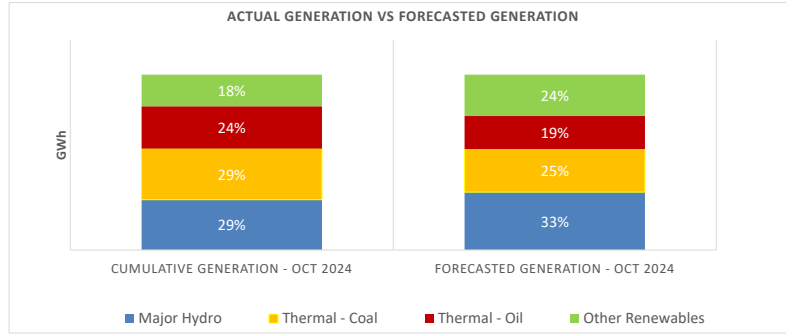
Actual Generation Mix - 26th Oct 2024 (Excluding generation from non telemetered power plants)

Plant Type	Generation (GWh)	Percentage
Major Hydro	10.7	27%
Thermal - Coal	12.5	32%
Thermal - Furnace Oil	5.6	14%
Thermal - Diesel	0.00	0%
Thermal - Naphtha	3.3	8%
Wind - CEB	1.8	4%
Wind - IPP	1.0	3%
BMP	0.1	0.3%
Solar	0.7	2%
Mini Hydro	3.9	10%
Total	39.55	

Estimated Generation Cost for the Scheduled Dispatch (Excluding non telemetered NCRE plants) **1109.42 Mn LKR**

Estimated Generation Cost for the Actual Dispatch (Excluding non telemetered NCRE plants) **930.81 Mn LKR**





	Cumulative Generation - Oct 2024 [GWh]	Forecasted Generation - Oct 2024 [GWh]
Major Hydro	330	470
Thermal - Coal	336	350
Thermal - Oil	278	269
Other Renewables	207	336
Total	1152	1425

Forecasted Generation - SDDP Oct 2024

Estimated Cost of Generation - Oct 2024 (Mn LKR)

Major Hydro	977.35 Mn LKR
Thermal - Coal	7879.96 Mn LKR
Thermal - Furnace Oil	10834.64 Mn LKR
Thermal - Diesel	599.61 Mn LKR
Thermal - Naphtha	3538.72 Mn LKR
Wind - CEB	542.21 Mn LKR
Wind - IPP	325.43 Mn LKR
Solar - IPP - Ground Mounted	323.17 Mn LKR
Solar - Roof Top	1567.82 Mn LKR
Mini Hydro	1051.19 Mn LKR
Municipal Solid Waste	211.40 Mn LKR
Total Generation Cost	27,851.49 Mn LKR

Generation Energy Cost (Oct)	22,225.01 Mn LKR
*Generation Capacity Cost (Oct)	4,581.26 Mn LKR
Other Cost (Oct)	1,045.22 Mn LKR

Average Unit Cost of Generation (Oct) 24.19 LKR/kWh

Note -

* Capacity cost is based on the approved BST submission.