



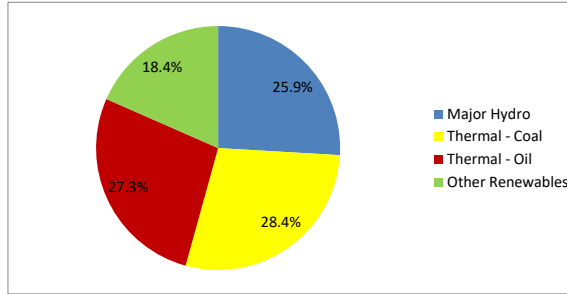
Daily Electricity Generation & Cost Estimation Report

25thOctober 2024



Daily Generation Mix -25th Oct 2024

Plant Type	Generation (GWh)	Percentage
Major Hydro	11.93	25.9%
Thermal - Coal	13.06	28.4%
Thermal - Furnace Oil	8.99	19.5%
Thermal - Diesel	0.00	0.0%
Thermal - Naphtha	3.57	7.8%
Wind - CEB	1.29	2.8%
Wind - IPP	1.05	2.3%
Solar - IPP - Ground Mounted	0.68	1.5%
Solar - Roof Top	2.42	5.3%
Mini Hydro	2.87	6.2%
Municipal Solid Waste	0.17	0.4%
Total	46.02	



Note - Estimated generation from roof top solar, non-telemetered solar and mini hydro plants has been included in the above figures

Estimated Generation Cost : 25thOct 2024

Plant Type	Energy Cost (Mn LKR)	Non Fuel Energy Cost (Mn LKR)	Capacity Cost (Mn LKR)	Total Cost of Generation (Mn LKR)	Energy Cost per Unit (LKR/kWh)	Non fuel Energy Cost per Unit (LKR/kWh)	Capacity Charge per Unit (LKR/kWh)	Cost of Electricity per Unit (LKR/kWh)
Major Hydro	0.0	0.0	37.6	37.6	0.00	0.00	3.15	3.15
Thermal - Coal	233.0	27.5	44.5	305.0	17.85	2.10	3.41	23.36
Thermal - Furnace Oil	413.2	9.4	50.3	472.8	45.98	1.04	5.59	52.62
Thermal - Diesel	0.0	1.5	19.8	21.2	0.00	0.00	0.00	0.00
Thermal - Naphtha	159.7	1.9	3.2	164.8	44.74	0.54	0.89	46.17
Wind - CEB	0.0	0.0	20.9	20.9	0.00	0.00	16.20	16.20
Wind - IPP	16.9	0.0	0.0	16.9	16.15	0.00	0.00	16.15
Solar - IPP - Ground Mounted	13.3	0.0	0.0	13.3	19.58	0.00	0.00	19.58
Solar - Roof Top	60.3	0.0	0.0	60.3	24.92	0.00	0.00	24.92
Mini Hydro	39.0	0.0	0.0	39.0	13.59	0.00	0.00	13.59
Municipal Solid Waste	6.7	0.0	0.0	6.7	39.00	0.00	0.00	39.00
Total	942.2	40.2	176.2	1158.6	20.47	0.87	3.83	25.17

Note -

Start/Stop costs has been excluded in the calculation

Capacity cost is based on the approved BST submission.

Unit Cost of Generation for the day : **25.17 LKR/kWh**
 Total Generation Cost for the day: **1158.55 Mn LKR**

Fuel Prices

(as at 17th Oct 2024)

	Price (LKR/Liter or LKR/kg)
Furnace	199.00
Coal	43.47
Naphtha	166.00
Auto Diesel	283.00

Scheduled (Day Ahead) Generation Mix - 25th Oct 2024 (Excluding generation from non telemetered power plants)

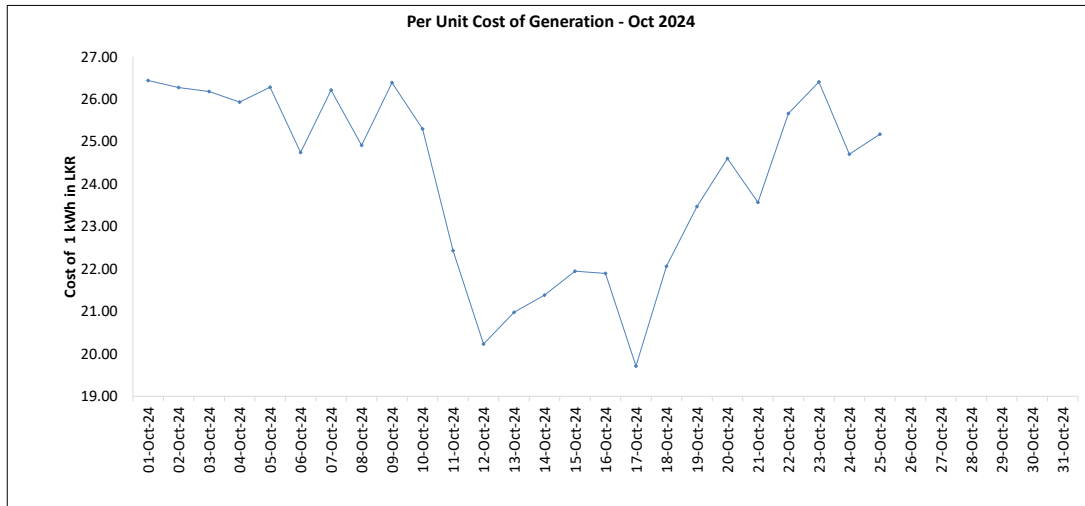
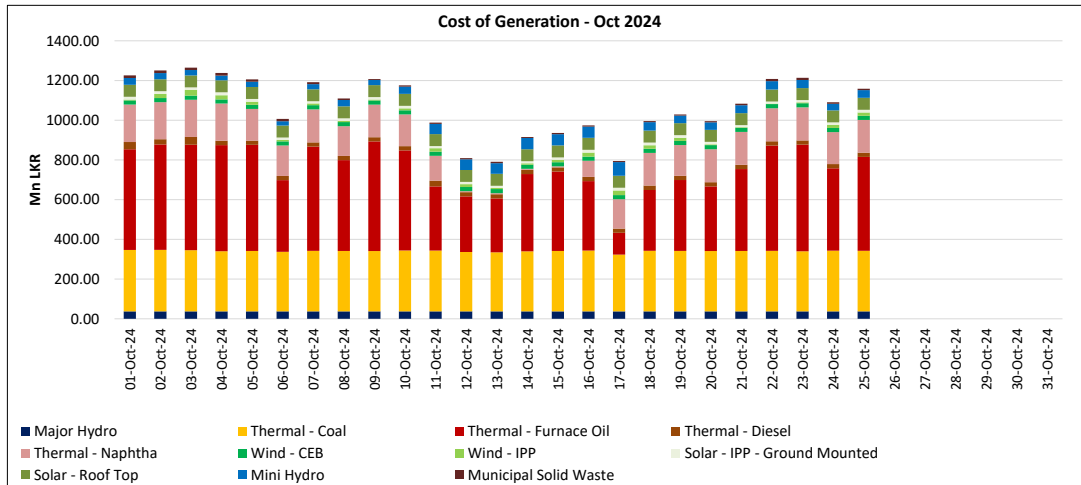
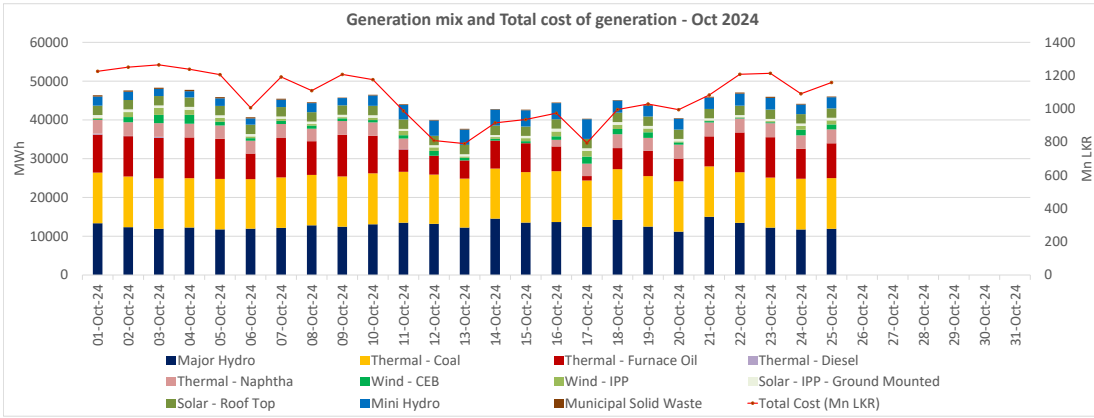
Plant Type	Generation (GWh)	Percentage
Major Hydro	12.5	30%
Thermal - Coal	13.0	31%
Thermal - Furnace Oil	7.9	19%
Thermal - Diesel	0.0	0%
Thermal - Naphtha	3.6	9%
Wind - CEB	1.4	3%
Wind - IPP	0.3	2%
BMP	0.3	1%
Solar	3.1	7%
Mini Hydro		
Total	42.21	

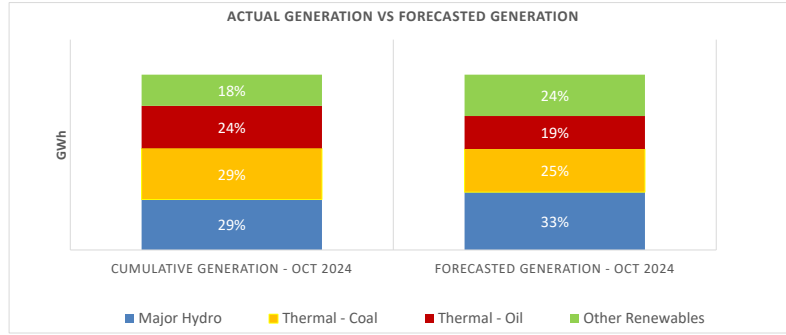
Actual Generation Mix - 25th Oct 2024 (Excluding generation from non telemetered power plants)

Plant Type	Generation (GWh)	Percentage
Major Hydro	11.9	27%
Thermal - Coal	13.1	30%
Thermal - Furnace Oil	9.0	21%
Thermal - Diesel	0.00	0%
Thermal - Naphtha	3.6	8%
Wind - CEB	1.3	3%
Wind - IPP	1.0	2%
BMP	0.2	0.4%
Solar	0.7	2%
Mini Hydro	2.7	6%
Total	43.44	

Estimated Generation Cost for the Scheduled Dispatch (Excluding non telemetered NCRE plants) **1043.53 Mn LKR**

Estimated Generation Cost for the Actual Dispatch (Excluding non telemetered NCRE plants) **1096.05 Mn LKR**





	Cumulative Generation - Oct 2024 [GWh]	Forecasted Generation - Oct 2024 [GWh]
Major Hydro	320	470
Thermal - Coal	323	350
Thermal - Oil	269	269
Other Renewables	197	336
Total	1109	1425

Forecasted Generation - SDDP Oct 2024

Estimated Cost of Generation - Oct 2024 (Mn LKR)

Major Hydro	939.76 Mn LKR
Thermal - Coal	7585.53 Mn LKR
Thermal - Furnace Oil	10517.47 Mn LKR
Thermal - Diesel	578.40 Mn LKR
Thermal - Naptha	3386.77 Mn LKR
Wind - CEB	521.36 Mn LKR
Wind - IPP	308.60 Mn LKR
Solar - IPP - Ground Mounted	309.92 Mn LKR
Solar - Roof Top	1507.52 Mn LKR
Mini Hydro	995.45 Mn LKR
Municipal Solid Waste	206.45 Mn LKR
Total Generation Cost	26,857.23 Mn LKR

Generation Energy Cost (Oct)	21,447.15 Mn LKR
*Generation Capacity Cost (Oct)	4,405.06 Mn LKR
Other Cost (Oct)	1,005.02 Mn LKR

Average Unit Cost of Generation (Oct) 24.21 LKR/kWh

Note -

* Capacity cost is based on the approved BST submission.