



# Daily Electricity Generation & Cost Estimation Report

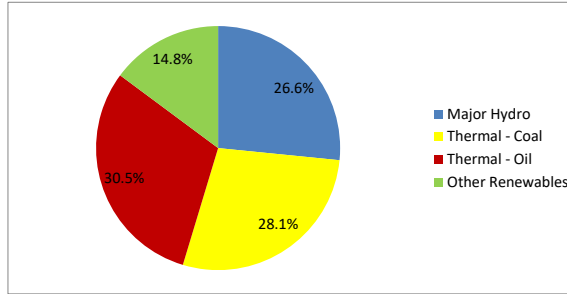
---

23rd October 2024



**Daily Generation Mix -23rd Oct 2024**

Plant Type	Generation (GWh)	Percentage
Major Hydro	12.22	26.6%
Thermal - Coal	12.91	28.1%
Thermal - Furnace Oil	10.41	22.6%
Thermal - Diesel	0.00	0.0%
Thermal - Naphtha	3.61	7.8%
Wind - CEB	0.25	0.5%
Wind - IPP	0.30	0.6%
Solar - IPP - Ground Mounted	0.57	1.2%
Solar - Roof Top	2.42	5.3%
Mini Hydro	3.00	6.5%
Municipal Solid Waste	0.28	0.6%
<b>Total</b>	<b>45.96</b>	



Note - Estimated generation from roof top solar, non-telemetered solar and mini hydro plants has been included in the above figures

**Estimated Generation Cost : 23rd Oct 2024**

Plant Type	Energy Cost (Mn LKR )	Non Fuel Energy Cost (Mn LKR )	Capacity Cost (Mn LKR )	Total Cost of Generation (Mn LKR )	Energy Cost per Unit (LKR/kWh )	Non fuel Energy Cost per Unit (LKR/kWh)	Capacity Charge per Unit (LKR/kWh)	Cost of Electricity per Unit (LKR/kWh)
Major Hydro	0.0	0.0	37.6	37.6	0.00	0.00	3.08	3.08
Thermal - Coal	230.4	27.5	44.5	302.4	17.85	2.13	3.45	23.42
Thermal - Furnace Oil	477.4	9.4	50.3	537.1	45.87	0.90	4.83	51.60
Thermal - Diesel	0.0	1.5	19.8	21.2	0.00	0.00	0.00	0.00
Thermal - Naphtha	161.3	1.9	3.2	166.4	44.74	0.53	0.89	46.16
Wind - CEB	0.0	0.0	20.9	20.9	0.00	0.00	83.75	83.75
Wind - IPP	4.8	0.0	0.0	4.8	16.15	0.00	0.00	16.15
Solar - IPP - Ground Mounted	11.1	0.0	0.0	11.1	19.58	0.00	0.00	19.58
Solar - Roof Top	60.3	0.0	0.0	60.3	24.92	0.00	0.00	24.92
Mini Hydro	40.8	0.0	0.0	40.8	13.59	0.00	0.00	13.59
Municipal Solid Waste	11.1	0.0	0.0	11.1	39.00	0.00	0.00	39.00
<b>Total</b>	<b>997.2</b>	<b>40.2</b>	<b>176.2</b>	<b>1213.6</b>	<b>21.70</b>	<b>0.87</b>	<b>3.83</b>	<b>26.40</b>

Note -

Start/Stop costs has been excluded in the calculation

Capacity cost is based on the approved BST submission.

Unit Cost of Generation for the day : **26.40 LKR/kWh**  
 Total Generation Cost for the day: **1213.64 Mn LKR**

**Fuel Prices**

( as at 17th Oct 2024)

	Price (LKR/Liter or LKR/kg)
Furnace	199.00
Coal	43.47
Naphtha	166.00
Auto Diesel	283.00

**Scheduled (Day Ahead) Generation Mix - 23rd Oct 2024 (Excluding generation from non telemetered power plants)**

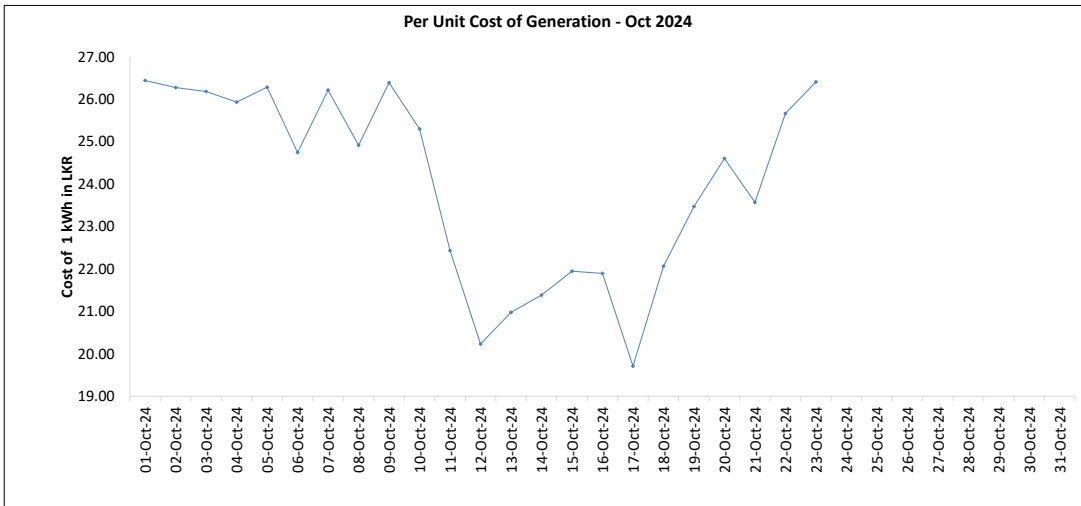
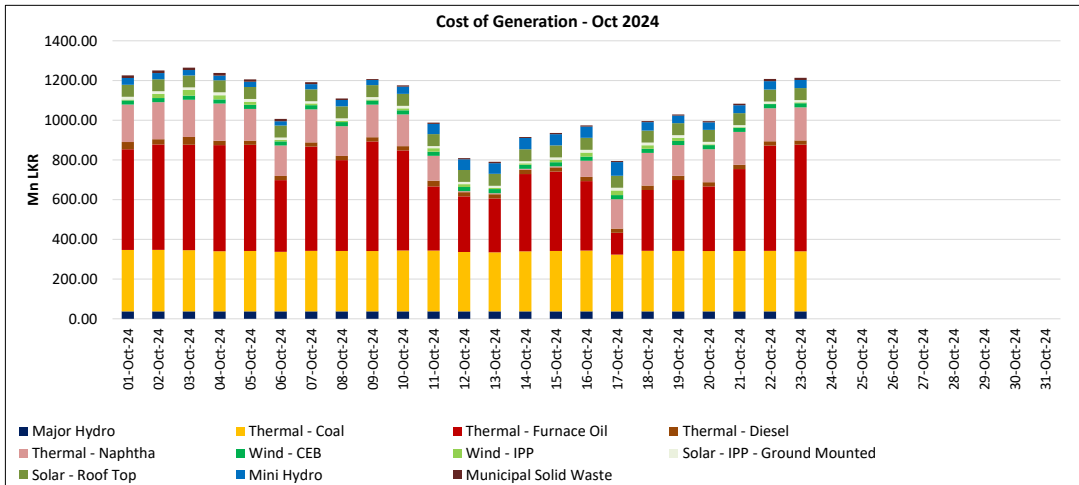
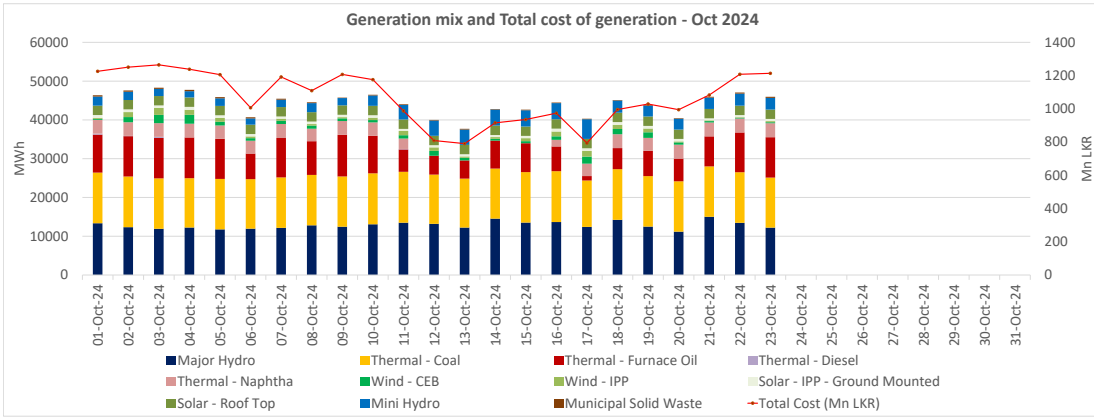
Plant Type	Generation (GWh)	Percentage
Major Hydro	12.9	29%
Thermal - Coal	13.0	29%
Thermal - Furnace Oil	10.5	24%
Thermal - Diesel	0.0	0%
Thermal - Naphtha	3.6	8%
Wind - CEB	0.5	1%
Wind - IPP	0.2	1%
BMP	0.3	1%
Solar	3.0	7%
Mini Hydro	3.0	7%
<b>Total</b>	<b>43.98</b>	

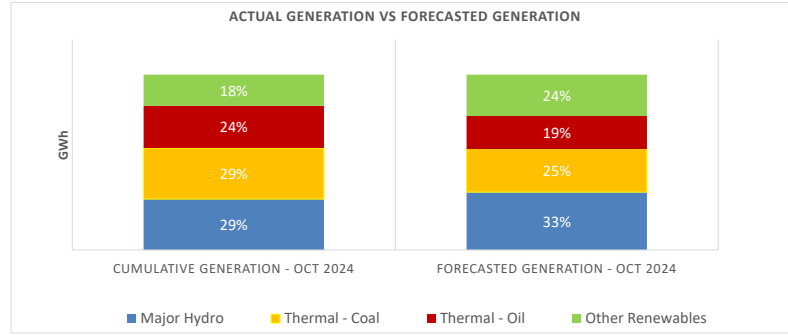
**Actual Generation Mix - 23rd Oct 2024 (Excluding generation from non telemetered power plants)**

Plant Type	Generation (GWh)	Percentage
Major Hydro	12.2	28%
Thermal - Coal	12.9	30%
Thermal - Furnace Oil	10.4	24%
Thermal - Diesel	0.00	0%
Thermal - Naphtha	3.6	8%
Wind - CEB	0.2	1%
Wind - IPP	0.3	1%
BMP	0.3	0.7%
Solar	0.6	1%
Mini Hydro	2.8	7%
<b>Total</b>	<b>43.37</b>	

Estimated Generation Cost for the Scheduled Dispatch (Excluding non telemetered NCRE plants) **1150.58 Mn LKR**

Estimated Generation Cost for the Actual Dispatch (Excluding non telemetered NCRE plants) **1151.03 Mn LKR**





	Cumulative Generation - Oct 2024 [GWh]	Forecasted Generation - Oct 2024 [GWh]
Major Hydro	296	470
Thermal - Coal	297	350
Thermal - Oil	245	269
Other Renewables	181	336
<b>Total</b>	<b>1019</b>	<b>1425</b>

Forecasted Generation - SDDP Oct 2024

**Estimated Cost of Generation - Oct 2024 ( Mn LKR)**

Major Hydro	864.58 Mn LKR
Thermal - Coal	6975.08 Mn LKR
Thermal - Furnace Oil	9629.64 Mn LKR
Thermal - Diesel	535.98 Mn LKR
Thermal - Naptha	3060.93 Mn LKR
Wind - CEB	479.65 Mn LKR
Wind - IPP	275.80 Mn LKR
Solar - IPP - Ground Mounted	284.33 Mn LKR
Solar - Roof Top	1386.92 Mn LKR
Mini Hydro	923.06 Mn LKR
Municipal Solid Waste	192.02 Mn LKR
<b>Total Generation Cost</b>	<b>24,607.98 Mn LKR</b>

Generation Energy Cost (Oct)	19,630.71 Mn LKR
*Generation Capacity Cost (Oct)	4,052.65 Mn LKR
Other Cost (Oct)	924.62 Mn LKR

Average Unit Cost of Generation (Oct) 24.14 LKR/kWh

Note -

\* Capacity cost is based on the approved BST submission.