



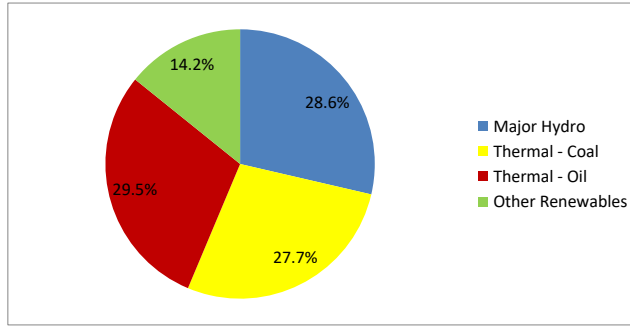
Daily Electricity Generation & Cost Estimation Report

22nd October 2024



Daily Generation Mix -22nd Oct 2024

Plant Type	Generation (GWh)	Percentage
Major Hydro	13.47	28.6%
Thermal - Coal	13.04	27.7%
Thermal - Furnace Oil	10.26	21.8%
Thermal - Diesel	0.00	0.0%
Thermal - Naphtha	3.61	7.7%
Wind - CEB	0.19	0.4%
Wind - IPP	0.15	0.3%
Solar - IPP - Ground Mounted	0.54	1.1%
Solar - Roof Top	2.42	5.1%
Mini Hydro	3.11	6.6%
Municipal Solid Waste	0.29	0.6%
Total	47.06	



Note – Estimated generation from roof top solar, non-telemetered solar and mini hydro plants has been included in the above figures

Estimated Generation Cost : 22nd Oct 2024

Plant Type	Energy Cost (Mn LKR)	Non Fuel Energy Cost (Mn LKR)	Capacity Cost (Mn LKR)	Total Cost of Generation (Mn LKR)	Energy Cost per Unit (LKR/kWh)	Non fuel Energy Cost per Unit (LKR/kWh)	Capacity Charge per Unit (LKR/kWh)	Cost of Electricity per Unit (LKR/kWh)
Major Hydro	0.0	0.0	37.6	37.6	0.00	0.00	2.79	2.79
Thermal - Coal	232.7	27.5	44.5	304.7	17.85	2.11	3.42	23.37
Thermal - Furnace Oil	470.7	9.4	50.3	530.3	45.90	0.91	4.90	51.71
Thermal - Diesel	0.0	1.5	19.8	21.2	0.00	0.00	0.00	0.00
Thermal - Naphtha	161.4	1.9	3.2	166.5	44.74	0.53	0.88	46.15
Wind - CEB	0.0	0.0	20.9	20.9	0.00	0.00	109.18	109.18
Wind - IPP	2.5	0.0	0.0	2.5	16.15	0.00	0.00	16.15
Solar - IPP - Ground Mounted	10.5	0.0	0.0	10.5	19.58	0.00	0.00	19.58
Solar - Roof Top	60.3	0.0	0.0	60.3	24.92	0.00	0.00	24.92
Mini Hydro	42.2	0.0	0.0	42.2	13.59	0.00	0.00	13.59
Municipal Solid Waste	11.1	0.0	0.0	11.1	39.00	0.00	0.00	39.00
Total	991.4	40.2	176.2	1207.8	21.06	0.85	3.74	25.66

Note -

Start/Stop costs has been excluded in the calculation

Capacity cost is based on the approved BST submission.

Unit Cost of Generation for the day : **25.66 LKR/kWh**
 Total Generation Cost for the day: **1207.77 Mn LKR**

Fuel Prices

(as at 17th Oct 2024)

	Price (LKR/Liter or LKR/kg)
Furnace	199.00
Coal	43.47
Naphtha	166.00
Auto Diesel	283.00

Scheduled (Day Ahead) Generation Mix - 22nd Oct 2024 (Excluding generation from non telemetered power plants)

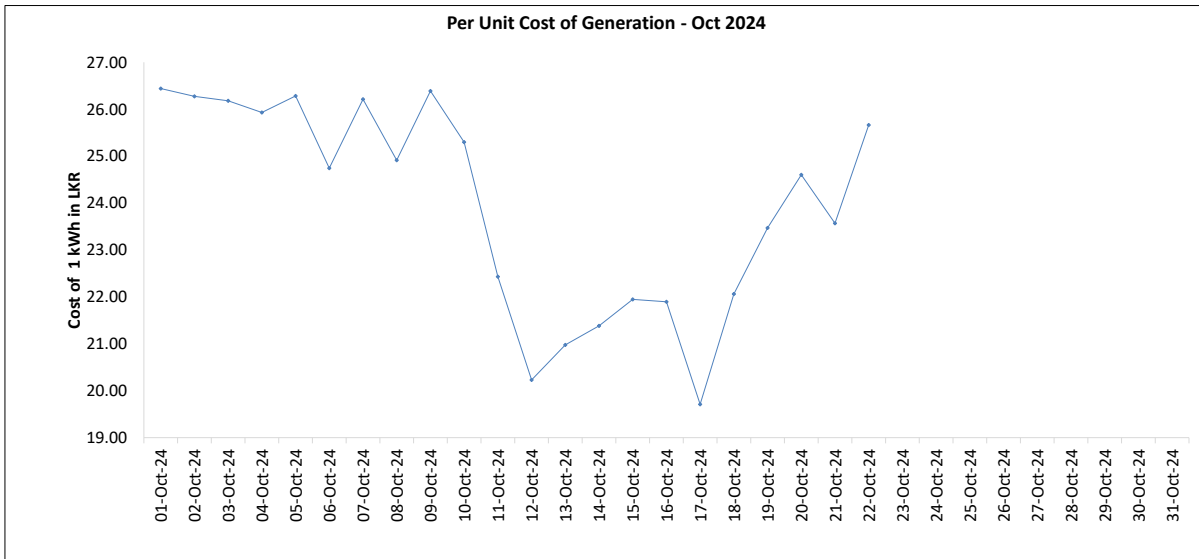
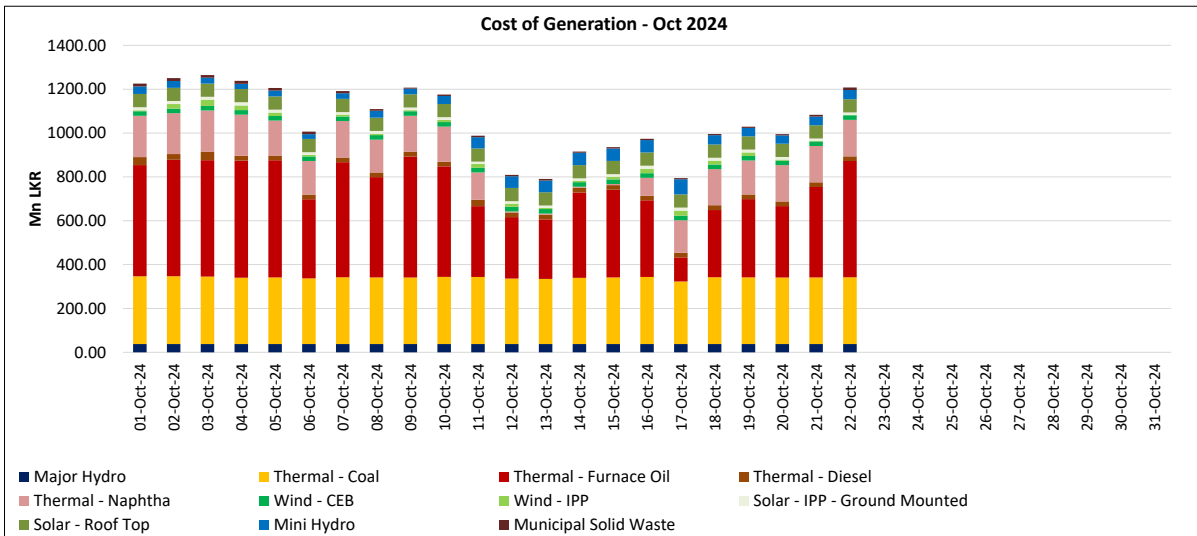
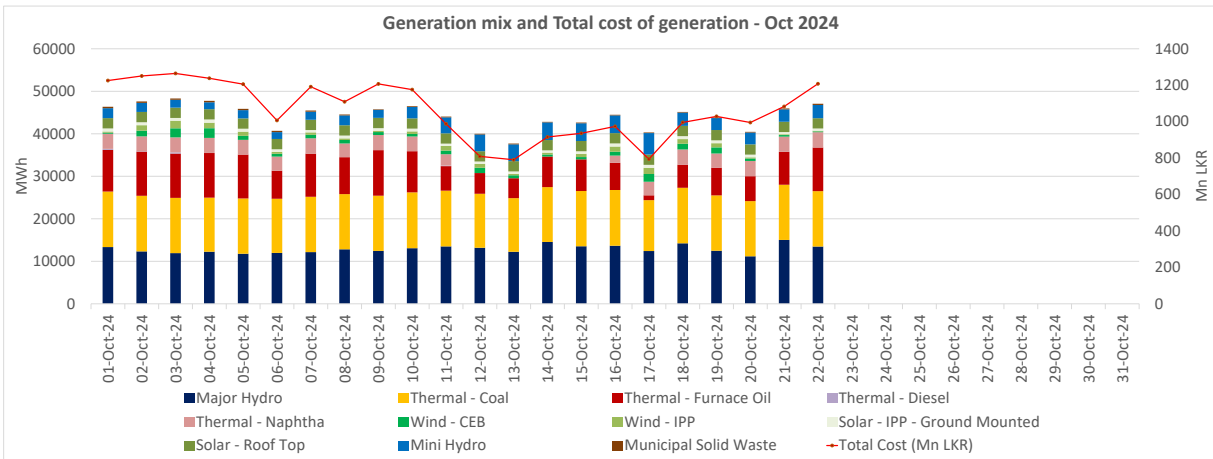
Plant Type	Generation (GWh)	Percentage
Major Hydro	12.2	28%
Thermal - Coal	13.0	29%
Thermal - Furnace Oil	10.7	24%
Thermal - Diesel	0.0	0%
Thermal - Naphtha	3.6	8%
Wind - CEB		
Wind - IPP	1.1	2%
BMP	0.1	1%
Solar	0.5	1%
Mini Hydro	2.9	7%
Total	44.00	

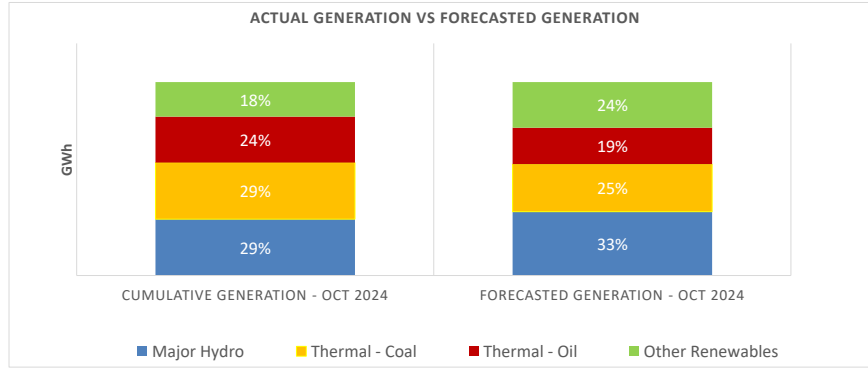
Estimated Generation Cost for the Scheduled Dispatch (Excluding non telemetered NCRE plants) **1157.86 Mn LKR**

Actual Generation Mix - 22nd Oct 2024 (Excluding generation from non telemetered power plants)

Plant Type	Generation (GWh)	Percentage
Major Hydro	13.5	30%
Thermal - Coal	13.0	29%
Thermal - Furnace Oil	10.3	23%
Thermal - Diesel	0.0	0%
Thermal - Naphtha	3.6	8%
Wind - CEB	0.2	0%
Wind - IPP	0.2	0%
BMP	0.3	0.6%
Solar	0.5	1%
Mini Hydro	2.9	7%
Total	44.47	

Estimated Generation Cost for the Actual Dispatch (Excluding non telemetered NCRE plants) **1142.06 Mn LKR**





	Cumulative Generation - Oct 2024 [GWh]	Forecasted Generation - Oct 2024 [GWh]
Major Hydro	284	470
Thermal - Coal	284	350
Thermal - Oil	231	269
Other Renewables	174	336
Total	973	1425

Forecasted Generation - SDDP Oct 2024

Estimated Cost of Generation - Oct 2024 (Mn LKR)

Major Hydro	826.99 Mn LKR
Thermal - Coal	6672.71 Mn LKR
Thermal - Furnace Oil	9092.56 Mn LKR
Thermal - Diesel	514.77 Mn LKR
Thermal - Naphtha	2894.49 Mn LKR
Wind - CEB	458.79 Mn LKR
Wind - IPP	270.99 Mn LKR
Solar - IPP - Ground Mounted	273.21 Mn LKR
Solar - Roof Top	1326.62 Mn LKR
Mini Hydro	882.28 Mn LKR
Municipal Solid Waste	180.95 Mn LKR
Total Generation Cost	23,394.35 Mn LKR

Generation Energy Cost (Oct) 18,633.48 Mn LKR

*Generation Capacity Cost (Oct) 3,876.45 Mn LKR

Other Cost (Oct) 884.42 Mn LKR

Average Unit Cost of Generation (Oct) 24.04 LKR/kWh

Note -

* Capacity cost is based on the approved BST submission.