



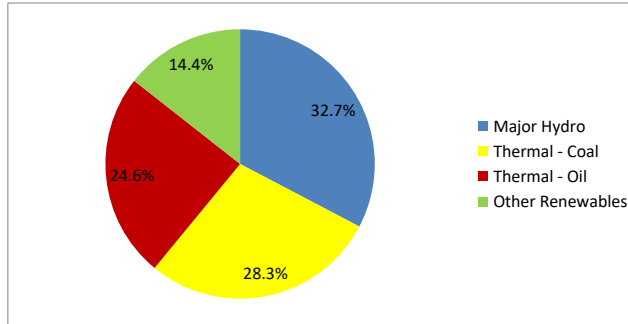
Daily Electricity Generation & Cost Estimation Report

21st October 2024



Daily Generation Mix -21st Oct 2024

Plant Type	Generation (GWh)	Percentage
Major Hydro	15.02	32.7%
Thermal - Coal	12.99	28.3%
Thermal - Furnace Oil	7.74	16.8%
Thermal - Diesel	0.00	0.0%
Thermal - Naphtha	3.59	7.8%
Wind - CEB	0.35	0.8%
Wind - IPP	0.20	0.4%
Solar - IPP - Ground Mounted	0.52	1.1%
Solar - Roof Top	2.42	5.3%
Mini Hydro	2.93	6.4%
Municipal Solid Waste	0.20	0.4%
Total	45.96	



Note – Estimated generation from roof top solar, non-telemetered solar and mini hydro plants has been included in the above figures

Estimated Generation Cost : 21st Oct 2024

Plant Type	Energy Cost (Mn LKR)	Non Fuel Energy Cost (Mn LKR)	Capacity Cost (Mn LKR)	Total Cost of Generation (Mn LKR)	Energy Cost per Unit (LKR/kWh)	Non fuel Energy Cost per Unit (LKR/kWh)	Capacity Charge per Unit (LKR/kWh)	Cost of Electricity per Unit (LKR/kWh)
Major Hydro	0.0	0.0	37.6	37.6	0.00	0.00	2.50	2.50
Thermal - Coal	231.9	27.5	44.5	303.9	17.85	2.11	3.43	23.39
Thermal - Furnace Oil	353.0	9.4	50.3	412.7	45.64	1.21	6.50	53.35
Thermal - Diesel	0.0	1.5	19.8	21.2	0.00	0.00	0.00	0.00
Thermal - Naphtha	160.6	1.9	3.2	165.7	44.74	0.53	0.89	46.16
Wind - CEB	0.0	0.0	20.9	20.9	0.00	0.00	59.25	59.25
Wind - IPP	3.2	0.0	0.0	3.2	16.15	0.00	0.00	16.15
Solar - IPP - Ground Mounted	10.3	0.0	0.0	10.3	19.58	0.00	0.00	19.58
Solar - Roof Top	60.3	0.0	0.0	60.3	24.92	0.00	0.00	24.92
Mini Hydro	39.8	0.0	0.0	39.8	13.59	0.00	0.00	13.59
Municipal Solid Waste	7.8	0.0	0.0	7.8	39.00	0.00	0.00	39.00
Total	866.9	40.2	176.2	1083.3	18.86	0.87	3.83	23.57

Note -

Start/Stop costs has been excluded in the calculation

Capacity cost is based on the approved BST submission.

Unit Cost of Generation for the day : **23.57 LKR/kWh**
 Total Generation Cost for the day : **1083.26 Mn LKR**

Fuel Prices

(as at 17th Oct 2024)

	Price (LKR/Liter or LKR/kg)
Furnace	199.00
Coal	43.47
Naphtha	166.00
Auto Diesel	283.00

Scheduled (Day Ahead) Generation Mix - 21st Oct 2024 (Excluding generation from non telemetered power plants)

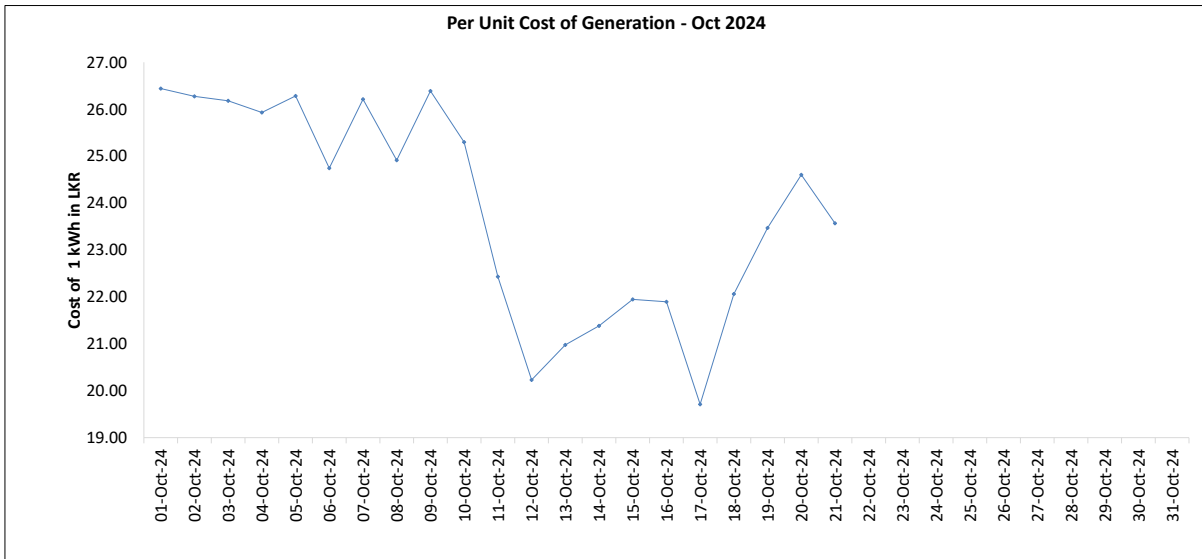
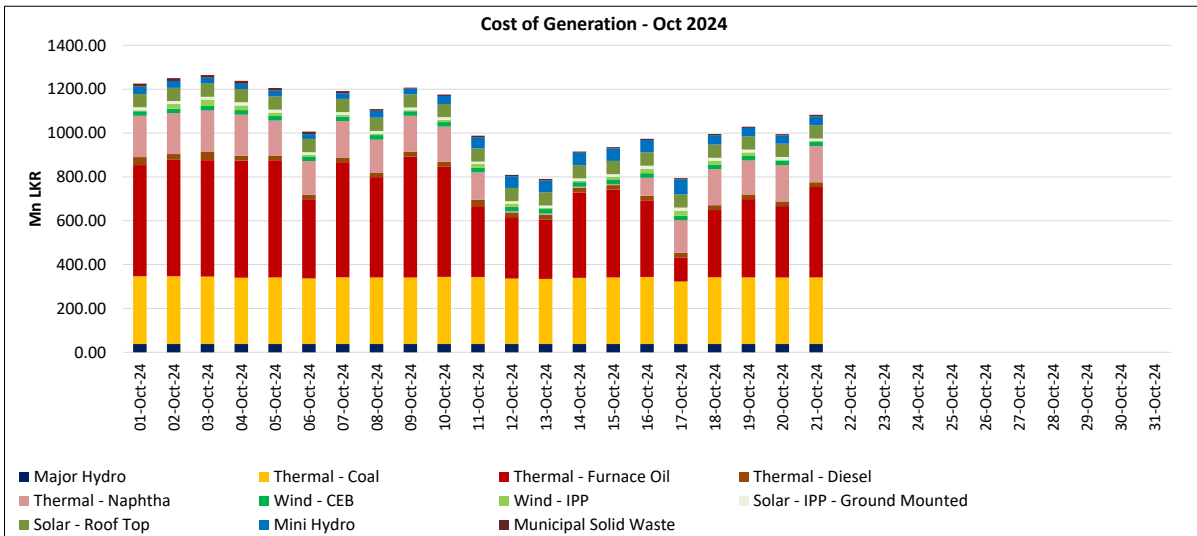
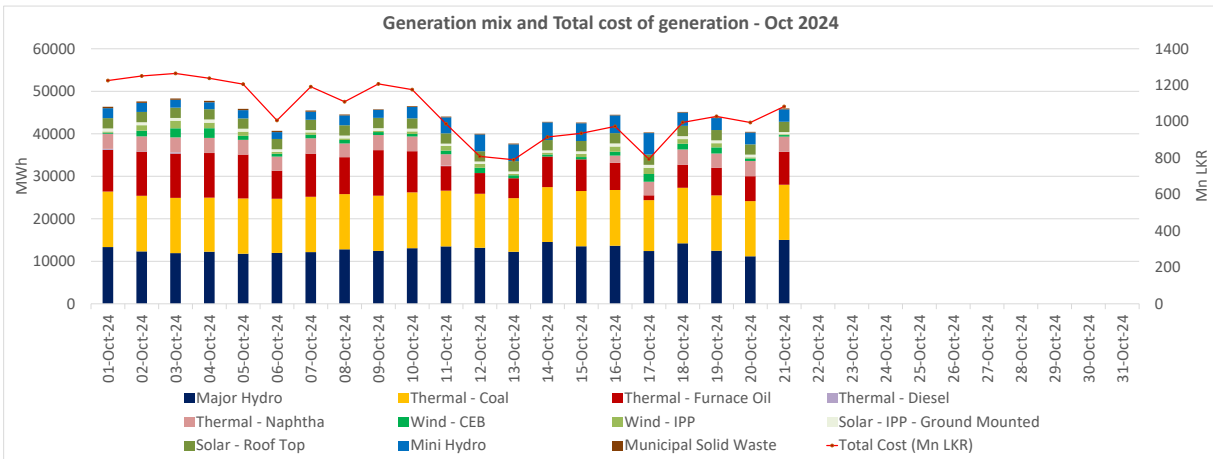
Plant Type	Generation (GWh)	Percentage
Major Hydro	11.7	28%
Thermal - Coal	13.0	31%
Thermal - Furnace Oil	9.6	23%
Thermal - Diesel	0.0	0%
Thermal - Naphtha	3.6	9%
Wind - CEB		
Wind - IPP	1.1	3%
BMP	0.1	1%
Solar	0.5	1%
Mini Hydro	2.7	6%
Total	42.19	

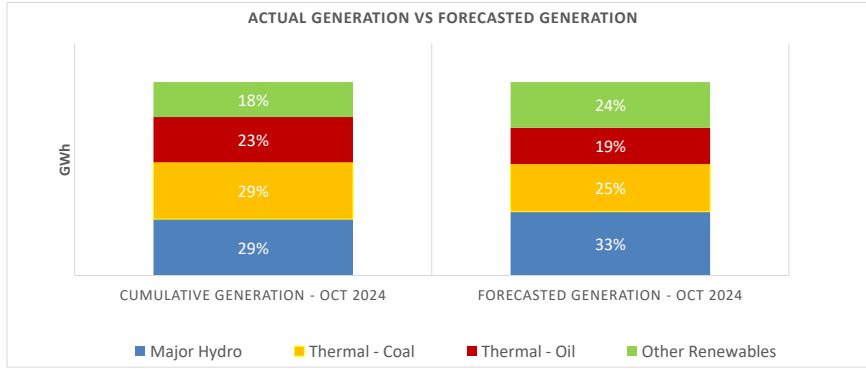
Estimated Generation Cost for the Scheduled Dispatch (Excluding non telemetered NCRE plants) **1105.53 Mn LKR**

Actual Generation Mix - 21st Oct 2024 (Excluding generation from non telemetered power plants)

Plant Type	Generation (GWh)	Percentage
Major Hydro	15.0	35%
Thermal - Coal	13.0	30%
Thermal - Furnace Oil	7.7	18%
Thermal - Diesel	0.0	0%
Thermal - Naphtha	3.6	8%
Wind - CEB	0.4	1%
Wind - IPP	0.2	0%
BMP	0.2	0.5%
Solar	0.5	1%
Mini Hydro	2.8	6%
Total	43.38	

Estimated Generation Cost for the Actual Dispatch (Excluding non telemetered NCRE plants) **1017.68 Mn LKR**





	Cumulative Generation - Oct 2024 [GWh]	Forecasted Generation - Oct 2024 [GWh]
Major Hydro	270	470
Thermal - Coal	271	350
Thermal - Oil	218	269
Other Renewables	167	336
Total	926	1425

Forecasted Generation - SDDP Oct 2024

Estimated Cost of Generation - Oct 2024 (Mn LKR)

Major Hydro	789.40 Mn LKR
Thermal - Coal	6368.02 Mn LKR
Thermal - Furnace Oil	8562.21 Mn LKR
Thermal - Diesel	493.56 Mn LKR
Thermal - Naphtha	2727.97 Mn LKR
Wind - CEB	437.94 Mn LKR
Wind - IPP	268.53 Mn LKR
Solar - IPP - Ground Mounted	262.73 Mn LKR
Solar - Roof Top	1266.32 Mn LKR
Mini Hydro	840.07 Mn LKR
Municipal Solid Waste	169.83 Mn LKR
Total Generation Cost	22,186.58 Mn LKR

Generation Energy Cost (Oct) 17,642.11 Mn LKR

*Generation Capacity Cost (Oct) 3,700.25 Mn LKR

Other Cost (Oct) 844.22 Mn LKR

Average Unit Cost of Generation (Oct) 23.95 LKR/kWh

Note -

* Capacity cost is based on the approved BST submission.