



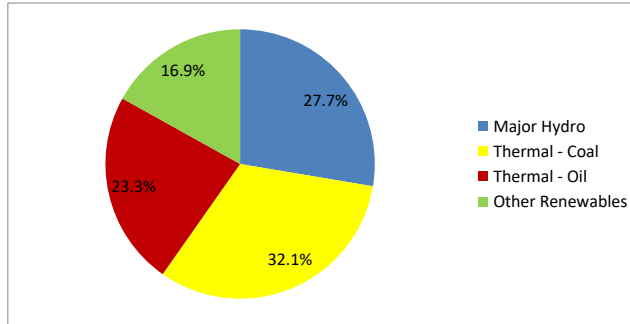
Daily Electricity Generation & Cost Estimation Report

20th October 2024



Daily Generation Mix -20th Oct 2024

| Plant Type | Generation (GWh) | Percentage |
|------------------------------|------------------|------------|
| Major Hydro | 11.19 | 27.7% |
| Thermal - Coal | 12.99 | 32.1% |
| Thermal - Furnace Oil | 5.85 | 14.5% |
| Thermal - Diesel | 0.00 | 0.0% |
| Thermal - Naphtha | 3.59 | 8.9% |
| Wind - CEB | 0.59 | 1.5% |
| Wind - IPP | 0.26 | 0.6% |
| Solar - IPP - Ground Mounted | 0.64 | 1.6% |
| Solar - Roof Top | 2.42 | 6.0% |
| Mini Hydro | 2.79 | 6.9% |
| Municipal Solid Waste | 0.15 | 0.4% |
| Total | 40.45 | |



Note – Estimated generation from roof top solar, non-telemetered solar and mini hydro plants has been included in the above figures

Estimated Generation Cost : 20th Oct 2024

| Plant Type | Energy Cost (Mn LKR) | Non Fuel Energy Cost (Mn LKR) | Capacity Cost (Mn LKR) | Total Cost of Generation (Mn LKR) | Energy Cost per Unit (LKR/kWh) | Non fuel Energy Cost per Unit (LKR/kWh) | Capacity Charge per Unit (LKR/kWh) | Cost of Electricity per Unit (LKR/kWh) |
|------------------------------|-----------------------|--------------------------------|-------------------------|------------------------------------|--------------------------------|---|------------------------------------|--|
| Major Hydro | 0.0 | 0.0 | 37.6 | 37.6 | 0.00 | 0.00 | 3.36 | 3.36 |
| Thermal - Coal | 231.7 | 27.5 | 44.5 | 303.7 | 17.85 | 2.11 | 3.43 | 23.39 |
| Thermal - Furnace Oil | 265.9 | 9.4 | 50.3 | 325.5 | 45.47 | 1.60 | 8.60 | 55.67 |
| Thermal - Diesel | 0.0 | 1.5 | 19.8 | 21.2 | 0.00 | 0.00 | 0.00 | 0.00 |
| Thermal - Naphtha | 160.6 | 1.9 | 3.2 | 165.7 | 44.74 | 0.53 | 0.89 | 46.16 |
| Wind - CEB | 0.0 | 0.0 | 20.9 | 20.9 | 0.00 | 0.00 | 35.11 | 35.11 |
| Wind - IPP | 4.1 | 0.0 | 0.0 | 4.1 | 16.15 | 0.00 | 0.00 | 16.15 |
| Solar - IPP - Ground Mounted | 12.5 | 0.0 | 0.0 | 12.5 | 19.58 | 0.00 | 0.00 | 19.58 |
| Solar - Roof Top | 60.3 | 0.0 | 0.0 | 60.3 | 24.92 | 0.00 | 0.00 | 24.92 |
| Mini Hydro | 37.9 | 0.0 | 0.0 | 37.9 | 13.59 | 0.00 | 0.00 | 13.59 |
| Municipal Solid Waste | 5.7 | 0.0 | 0.0 | 5.7 | 39.00 | 0.00 | 0.00 | 39.00 |
| Total | 778.8 | 40.2 | 176.2 | 995.2 | 19.25 | 0.99 | 4.36 | 24.60 |

Note -

Start/Stop costs has been excluded in the calculation

Capacity cost is based on the approved BST submission.

Unit Cost of Generation for the day : **24.60 LKR/kWh**
 Total Generation Cost for the day : **995.16 Mn LKR**

Fuel Prices

(as at 17th Oct 2024)

| | Price (LKR/Liter or LKR/kg) |
|-------------|-----------------------------|
| Furnace | 199.00 |
| Coal | 43.47 |
| Naphtha | 166.00 |
| Auto Diesel | 283.00 |

Scheduled (Day Ahead) Generation Mix - 20th Oct 2024 (Excluding generation from non telemetered power plants)

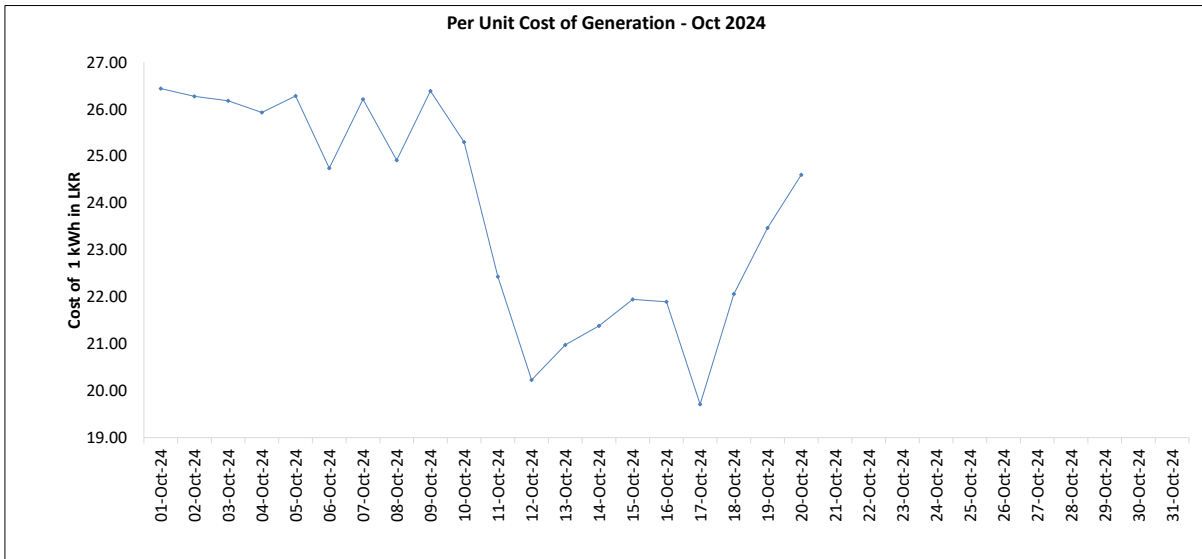
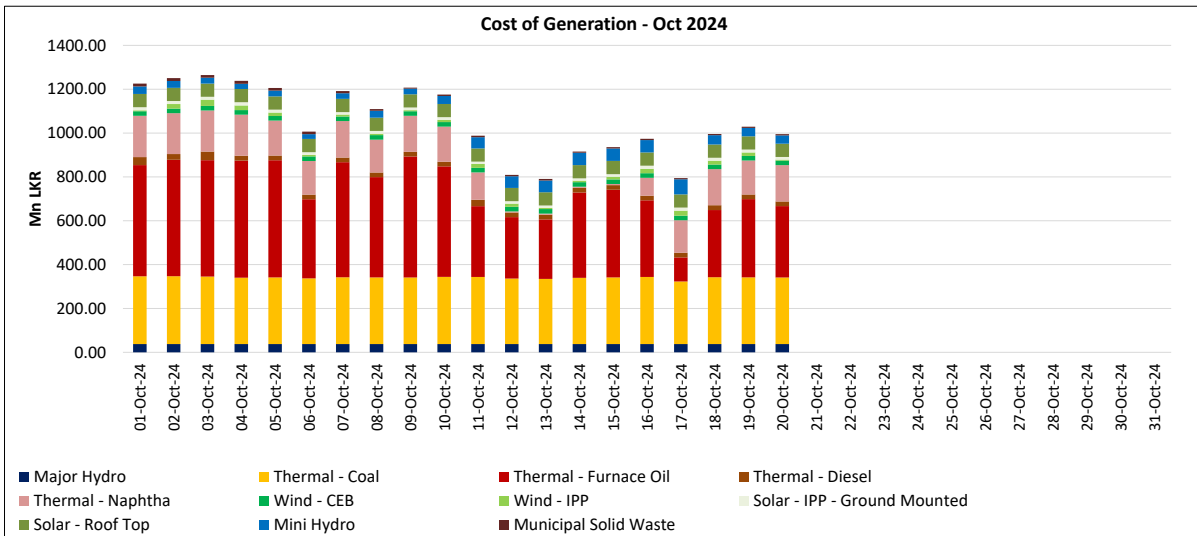
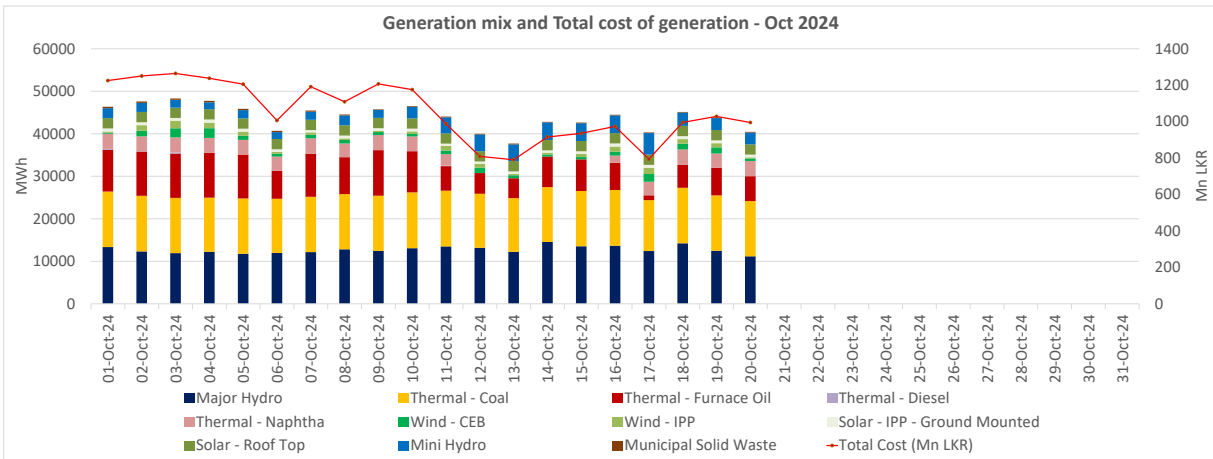
| Plant Type | Generation (GWh) | Percentage |
|-----------------------|------------------|------------|
| Major Hydro | 10.3 | 28% |
| Thermal - Coal | 12.9 | 36% |
| Thermal - Furnace Oil | 4.5 | 12% |
| Thermal - Diesel | 0.0 | 0% |
| Thermal - Naphtha | 3.5 | 10% |
| Wind - CEB | | |
| Wind - IPP | 1.2 | 3% |
| BMP | 0.1 | 2% |
| Solar | 0.5 | 1% |
| Mini Hydro | 3.2 | 9% |
| Total | 36.24 | |

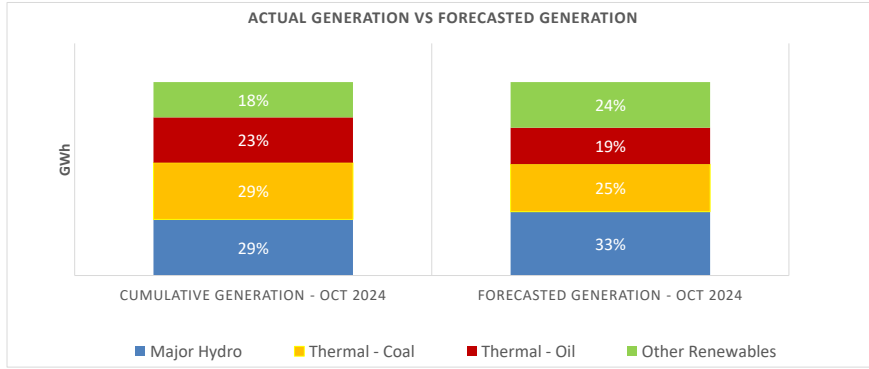
Estimated Generation Cost for the Scheduled Dispatch (Excluding non telemetered NCRE plants) **873.93 Mn LKR**

Actual Generation Mix - 20th Oct 2024 (Excluding generation from non telemetered power plants)

| Plant Type | Generation (GWh) | Percentage |
|-----------------------|------------------|------------|
| Major Hydro | 11.2 | 30% |
| Thermal - Coal | 13.0 | 34% |
| Thermal - Furnace Oil | 5.8 | 15% |
| Thermal - Diesel | 0.00 | 0% |
| Thermal - Naphtha | 3.6 | 9% |
| Wind - CEB | 0.6 | 2% |
| Wind - IPP | 0.3 | 1% |
| BMP | 0.1 | 0.4% |
| Solar | 0.6 | 2% |
| Mini Hydro | 2.6 | 7% |
| Total | 37.87 | |

Estimated Generation Cost for the Actual Dispatch (Excluding non telemetered NCRE plants) **932.72 Mn LKR**





| | Cumulative Generation - Oct 2024 [GWh] | Forecasted Generation - Oct 2024 [GWh] |
|------------------|---|---|
| Major Hydro | 255 | 470 |
| Thermal - Coal | 258 | 350 |
| Thermal - Oil | 206 | 269 |
| Other Renewables | 161 | 336 |
| Total | 880 | 1425 |

Forecasted Generation - SDDP Oct 2024

Estimated Cost of Generation - Oct 2024 (Mn LKR)

| | |
|------------------------------|-------------------------|
| Major Hydro | 751.81 Mn LKR |
| Thermal - Coal | 6064.13 Mn LKR |
| Thermal - Furnace Oil | 8149.55 Mn LKR |
| Thermal - Diesel | 472.36 Mn LKR |
| Thermal - Naphtha | 2562.29 Mn LKR |
| Wind - CEB | 417.09 Mn LKR |
| Wind - IPP | 265.37 Mn LKR |
| Solar - IPP - Ground Mounted | 252.47 Mn LKR |
| Solar - Roof Top | 1206.02 Mn LKR |
| Mini Hydro | 800.26 Mn LKR |
| Municipal Solid Waste | 161.99 Mn LKR |
| Total Generation Cost | 21,103.32 Mn LKR |

Generation Energy Cost (Oct) 16,775.26 Mn LKR

*Generation Capacity Cost (Oct) 3,524.05 Mn LKR

Other Cost (Oct) 804.02 Mn LKR

Average Unit Cost of Generation (Oct) 23.97 LKR/kWh

Note -

* Capacity cost is based on the approved BST submission.