



# Daily Electricity Generation & Cost Estimation Report

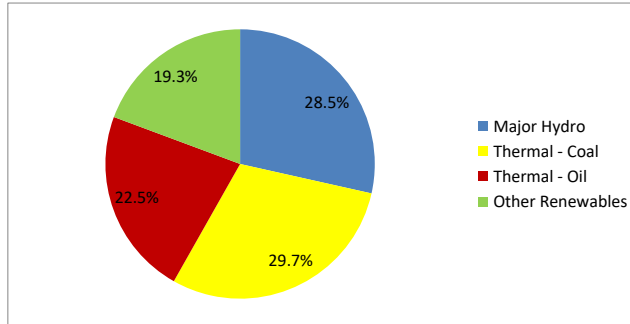
---

19th October 2024



**Daily Generation Mix -19th Oct 2024**

Plant Type	Generation (GWh)	Percentage
Major Hydro	12.50	28.5%
Thermal - Coal	13.01	29.7%
Thermal - Furnace Oil	6.51	14.8%
Thermal - Diesel	0.00	0.0%
Thermal - Naphtha	3.35	7.6%
Wind - CEB	1.44	3.3%
Wind - IPP	0.98	2.2%
Solar - IPP - Ground Mounted	0.68	1.5%
Solar - Roof Top	2.42	5.5%
Mini Hydro	2.82	6.4%
Municipal Solid Waste	0.14	0.3%
<b>Total</b>	<b>43.84</b>	



Note – Estimated generation from roof top solar, non-telemetered solar and mini hydro plants has been included in the above figures

**Estimated Generation Cost : 19th Oct 2024**

Plant Type	Energy Cost (Mn LKR)	Non Fuel Energy Cost (Mn LKR)	Capacity Cost (Mn LKR)	Total Cost of Generation (Mn LKR)	Energy Cost per Unit (LKR/kWh)	Non fuel Energy Cost per Unit (LKR/kWh)	Capacity Charge per Unit (LKR/kWh)	Cost of Electricity per Unit (LKR/kWh)
Major Hydro	0.0	0.0	37.6	37.6	0.00	0.00	3.01	3.01
Thermal - Coal	232.3	27.5	44.5	304.2	17.85	2.11	3.42	23.38
Thermal - Furnace Oil	297.4	9.4	50.3	357.0	45.69	1.44	7.72	54.85
Thermal - Diesel	0.0	1.5	19.8	21.2	0.00	0.00	0.00	0.00
Thermal - Naphtha	149.7	1.9	3.2	154.8	44.74	0.57	0.95	46.26
Wind - CEB	0.0	0.0	20.9	20.9	0.00	0.00	14.50	14.50
Wind - IPP	15.8	0.0	0.0	15.8	16.15	0.00	0.00	16.15
Solar - IPP - Ground Mounted	13.3	0.0	0.0	13.3	19.58	0.00	0.00	19.58
Solar - Roof Top	60.3	0.0	0.0	60.3	24.92	0.00	0.00	24.92
Mini Hydro	38.3	0.0	0.0	38.3	13.59	0.00	0.00	13.59
Municipal Solid Waste	5.5	0.0	0.0	5.5	39.00	0.00	0.00	39.00
<b>Total</b>	<b>812.6</b>	<b>40.2</b>	<b>176.2</b>	<b>1029.0</b>	<b>18.53</b>	<b>0.92</b>	<b>4.02</b>	<b>23.47</b>

Note -

Start/Stop costs has been excluded in the calculation

Capacity cost is based on the approved BST submission.

Unit Cost of Generation for the day : **23.47 LKR/kWh**  
 Total Generation Cost for the day: **1028.98 Mn LKR**

**Fuel Prices**

( as at 17th Oct 2024)

	Price (LKR/Liter or LKR/kg)
Furnace	199.00
Coal	43.47
Naphtha	166.00
Auto Diesel	283.00

**Scheduled (Day Ahead) Generation Mix - 19th Oct 2024 (Excluding generation from non telemetered power plants)**

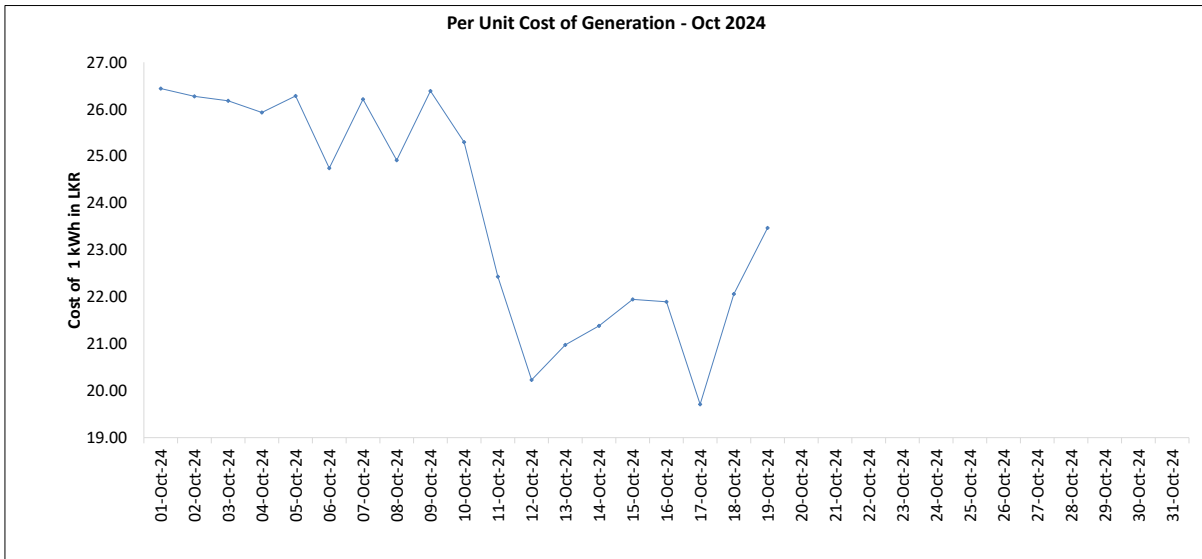
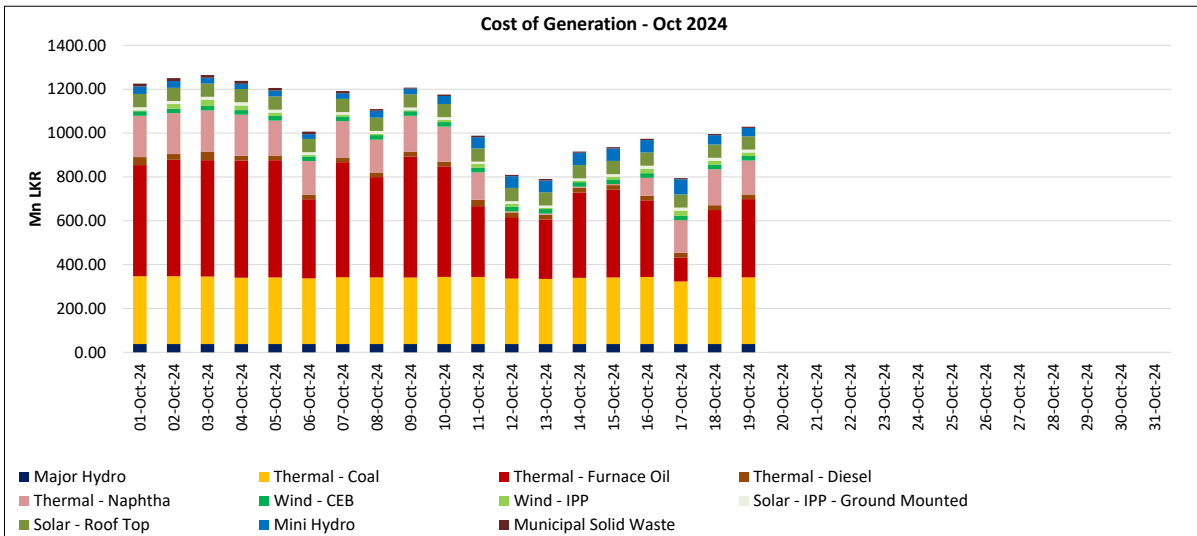
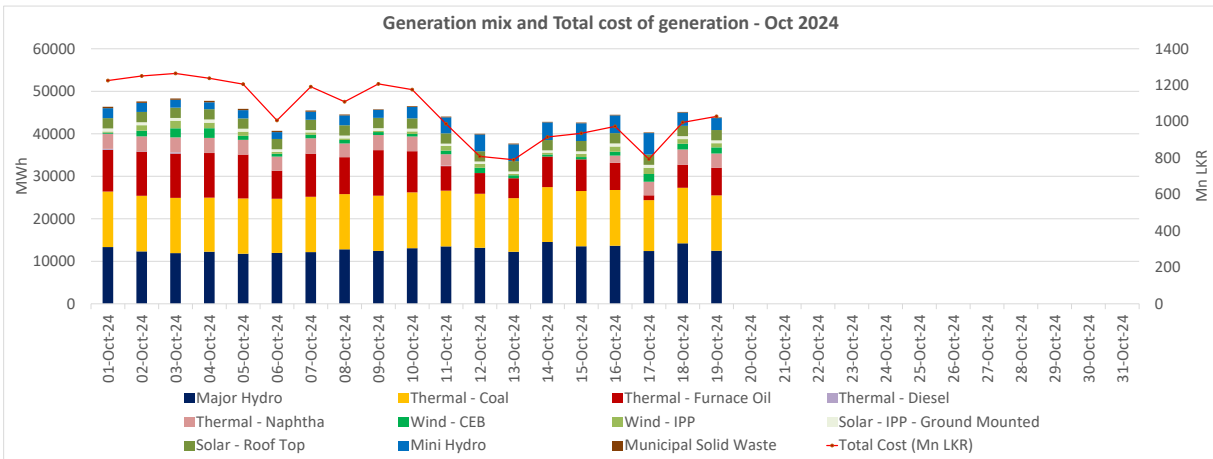
Plant Type	Generation (GWh)	Percentage
Major Hydro	11.7	31%
Thermal - Coal	13.0	34%
Thermal - Furnace Oil	3.8	10%
Thermal - Diesel	0.0	0%
Thermal - Naphtha	3.6	9%
Wind - CEB		
Wind - IPP	1.8	5%
BMP	0.1	2%
Solar	0.5	1%
Mini Hydro	3.8	10%
<b>Total</b>	<b>38.27</b>	

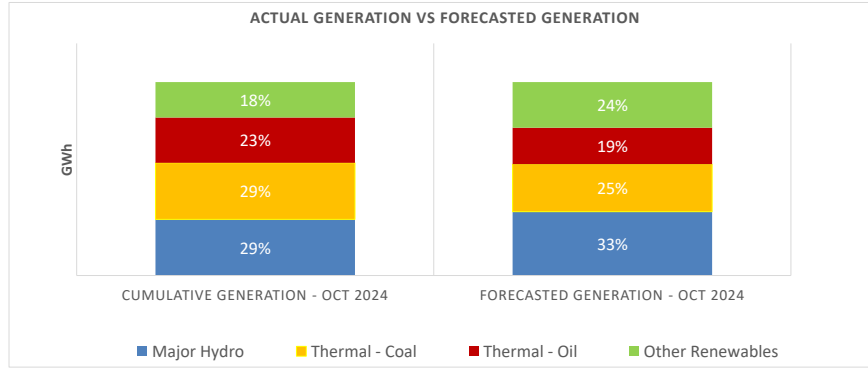
Estimated Generation Cost for the Scheduled Dispatch (Excluding non telemetered NCRE plants) **855.25 Mn LKR**

**Actual Generation Mix - 19th Oct 2024 (Excluding generation from non telemetered power plants)**

Plant Type	Generation (GWh)	Percentage
Major Hydro	12.5	30%
Thermal - Coal	13.0	32%
Thermal - Furnace Oil	6.5	16%
Thermal - Diesel	0.00	0%
Thermal - Naphtha	3.3	8%
Wind - CEB	1.4	3%
Wind - IPP	1.0	2%
BMP	0.1	0.3%
Solar	0.7	2%
Mini Hydro	2.7	6%
<b>Total</b>	<b>41.26</b>	

Estimated Generation Cost for the Actual Dispatch (Excluding non telemetered NCRE plants) **963.48 Mn LKR**





	Cumulative Generation - Oct 2024 [GWh]	Forecasted Generation - Oct 2024 [GWh]
Major Hydro	244	470
Thermal - Coal	245	350
Thermal - Oil	197	269
Other Renewables	154	336
<b>Total</b>	<b>840</b>	<b>1425</b>

Forecasted Generation - SDDP Oct 2024

**Estimated Cost of Generation - Oct 2024 ( Mn LKR)**

Major Hydro	714.22 Mn LKR
Thermal - Coal	5760.40 Mn LKR
Thermal - Furnace Oil	7824.04 Mn LKR
Thermal - Diesel	451.15 Mn LKR
Thermal - Naphtha	2396.62 Mn LKR
Wind - CEB	396.23 Mn LKR
Wind - IPP	261.23 Mn LKR
Solar - IPP - Ground Mounted	239.94 Mn LKR
Solar - Roof Top	1145.71 Mn LKR
Mini Hydro	762.36 Mn LKR
Municipal Solid Waste	156.26 Mn LKR
<b>Total Generation Cost</b>	<b>20,108.16 Mn LKR</b>

Generation Energy Cost (Oct) 15,996.50 Mn LKR

\*Generation Capacity Cost (Oct) 3,347.84 Mn LKR

Other Cost (Oct) 763.82 Mn LKR

Average Unit Cost of Generation (Oct) 23.94 LKR/kWh

Note -

\* Capacity cost is based on the approved BST submission.