



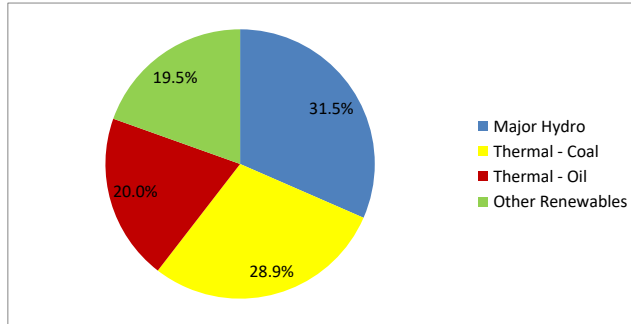
Daily Electricity Generation & Cost Estimation Report

18th October 2024



Daily Generation Mix -18th Oct 2024

Plant Type	Generation (GWh)	Percentage
Major Hydro	14.24	31.5%
Thermal - Coal	13.06	28.9%
Thermal - Furnace Oil	5.45	12.1%
Thermal - Diesel	0.01	0.0%
Thermal - Naphtha	3.56	7.9%
Wind - CEB	1.34	3.0%
Wind - IPP	1.10	2.4%
Solar - IPP - Ground Mounted	0.69	1.5%
Solar - Roof Top	2.42	5.4%
Mini Hydro	3.14	7.0%
Municipal Solid Waste	0.13	0.3%
Total	45.14	



Note – Estimated generation from roof top solar, non-telemetered solar and mini hydro plants has been included in the above figures

Estimated Generation Cost : 18th Oct 2024

Plant Type	Energy Cost (Mn LKR)	Non Fuel Energy Cost (Mn LKR)	Capacity Cost (Mn LKR)	Total Cost of Generation (Mn LKR)	Energy Cost per Unit (LKR/kWh)	Non fuel Energy Cost per Unit (LKR/kWh)	Capacity Charge per Unit (LKR/kWh)	Cost of Electricity per Unit (LKR/kWh)
Major Hydro	0.0	0.0	37.6	37.6	0.00	0.00	2.64	2.64
Thermal - Coal	233.0	27.5	44.5	305.0	17.85	2.10	3.41	23.36
Thermal - Furnace Oil	246.6	9.4	50.3	306.2	45.26	1.72	9.23	56.21
Thermal - Diesel	1.0	1.5	19.8	22.2	73.66	103.72	1411.20	1588.58
Thermal - Naphtha	159.3	1.9	3.2	164.4	44.74	0.54	0.90	46.17
Wind - CEB	0.0	0.0	20.9	20.9	0.00	0.00	15.59	15.59
Wind - IPP	17.7	0.0	0.0	17.7	16.15	0.00	0.00	16.15
Solar - IPP - Ground Mounted	13.5	0.0	0.0	13.5	19.58	0.00	0.00	19.58
Solar - Roof Top	60.3	0.0	0.0	60.3	24.92	0.00	0.00	24.92
Mini Hydro	42.7	0.0	0.0	42.7	13.59	0.00	0.00	13.59
Municipal Solid Waste	5.2	0.0	0.0	5.2	39.00	0.00	0.00	39.00
Total	779.3	40.2	176.2	995.7	17.27	0.89	3.90	22.06

Note -

Start/Stop costs has been excluded in the calculation

Capacity cost is based on the approved BST submission.

Unit Cost of Generation for the day : **22.06 LKR/kWh**
 Total Generation Cost for the day: **995.74 Mn LKR**

Fuel Prices

(as at 17th Oct 2024)

	Price (LKR/Liter or LKR/kg)
Furnace	199.00
Coal	43.47
Naphtha	166.00
Auto Diesel	283.00

Scheduled (Day Ahead) Generation Mix - 18th Oct 2024 (Excluding generation from non telemetered power plants)

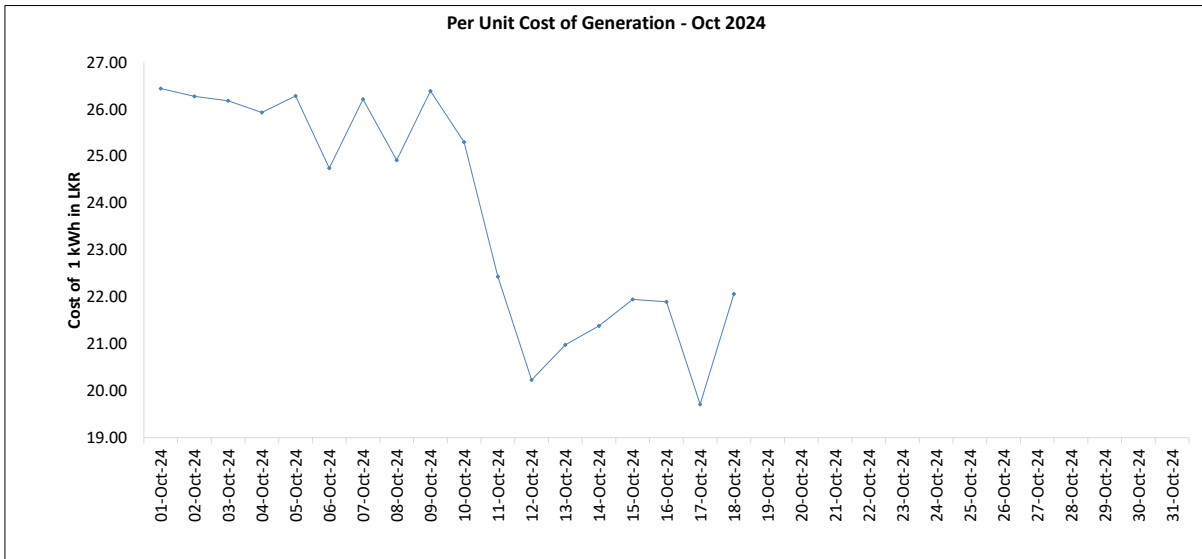
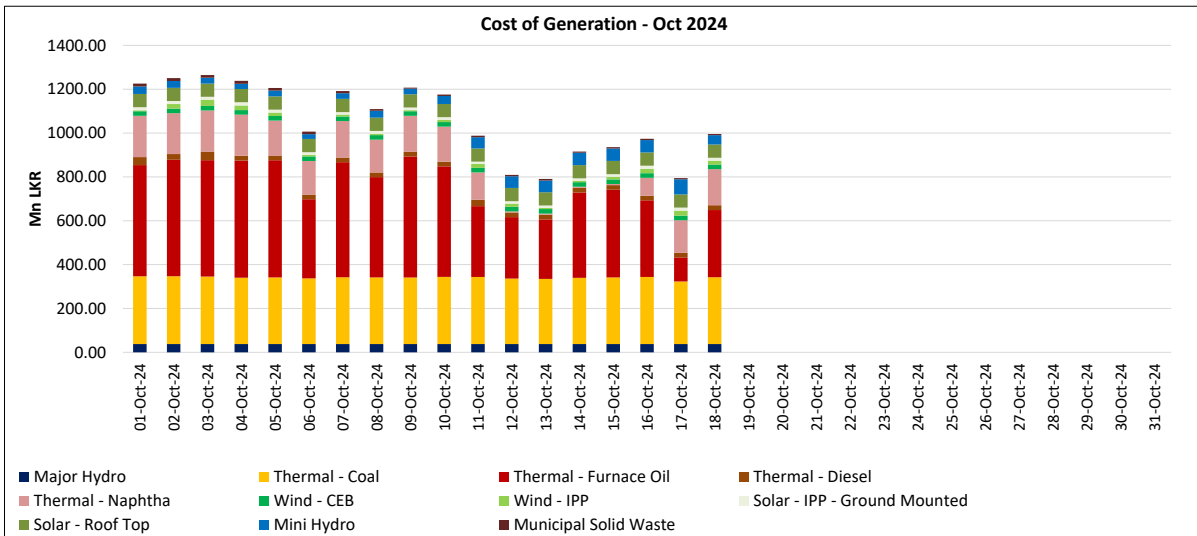
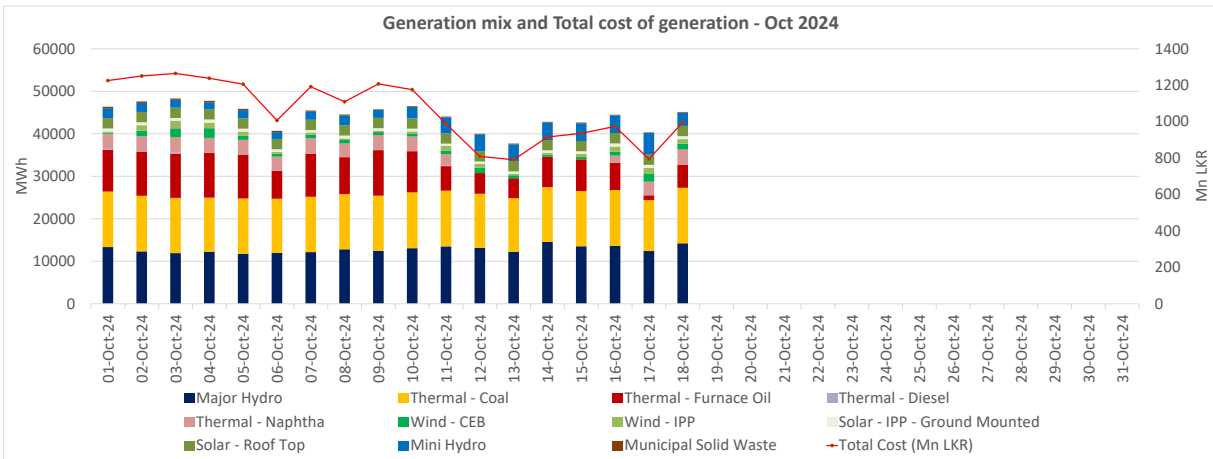
Plant Type	Generation (GWh)	Percentage
Major Hydro	13.9	34%
Thermal - Coal	13.0	32%
Thermal - Furnace Oil	3.3	8%
Thermal - Diesel	0.0	0%
Thermal - Naphtha	3.6	9%
Wind - CEB		
Wind - IPP	2.0	5%
BMP	0.1	3%
Solar	0.5	1%
Mini Hydro	4.3	11%
Total	40.81	

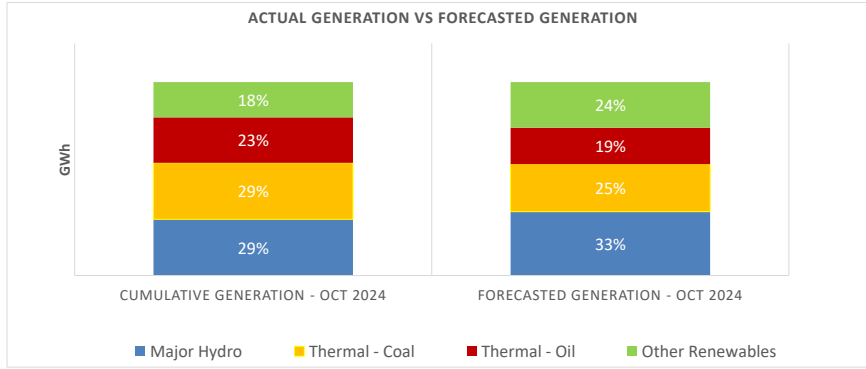
Estimated Generation Cost for the Scheduled Dispatch (Excluding non telemetered NCRE plants) **844.47 Mn LKR**

Actual Generation Mix - 18th Oct 2024 (Excluding generation from non telemetered power plants)

Plant Type	Generation (GWh)	Percentage
Major Hydro	14.2	33%
Thermal - Coal	13.1	31%
Thermal - Furnace Oil	5.4	13%
Thermal - Diesel	0.01	0%
Thermal - Naphtha	3.6	8%
Wind - CEB	1.3	3%
Wind - IPP	1.1	3%
BMP	0.1	0.3%
Solar	0.7	2%
Mini Hydro	3.0	7%
Total	42.54	

Estimated Generation Cost for the Actual Dispatch (Excluding non telemetered NCRE plants) **930.00 Mn LKR**





	Cumulative Generation - Oct 2024 [GWh]	Forecasted Generation - Oct 2024 [GWh]
Major Hydro	231	470
Thermal - Coal	232	350
Thermal - Oil	187	269
Other Renewables	145	336
Total	796	1425

Forecasted Generation - SDDP Oct 2024

Estimated Cost of Generation - Oct 2024 (Mn LKR)

Major Hydro	676.63 Mn LKR
Thermal - Coal	5456.16 Mn LKR
Thermal - Furnace Oil	7467.03 Mn LKR
Thermal - Diesel	429.94 Mn LKR
Thermal - Naphtha	2241.77 Mn LKR
Wind - CEB	375.38 Mn LKR
Wind - IPP	245.47 Mn LKR
Solar - IPP - Ground Mounted	226.65 Mn LKR
Solar - Roof Top	1085.41 Mn LKR
Mini Hydro	724.03 Mn LKR
Municipal Solid Waste	150.72 Mn LKR
Total Generation Cost	19,079.18 Mn LKR

Generation Energy Cost (Oct) 15,183.92 Mn LKR

*Generation Capacity Cost (Oct) 3,171.64 Mn LKR

Other Cost (Oct) 723.62 Mn LKR

Average Unit Cost of Generation (Oct) 23.97 LKR/kWh

Note -

* Capacity cost is based on the approved BST submission.