



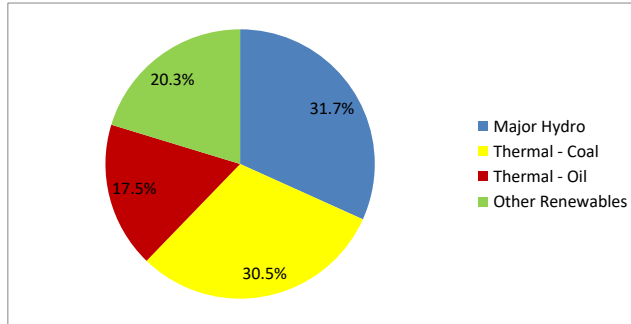
Daily Electricity Generation & Cost Estimation Report

15th October 2024



Daily Generation Mix -15th Oct 2024

Plant Type	Generation (GWh)	Percentage
Major Hydro	13.54	31.7%
Thermal - Coal	13.00	30.5%
Thermal - Furnace Oil	7.46	17.5%
Thermal - Diesel	0.00	0.0%
Thermal - Naphtha	0.00	0.0%
Wind - CEB	0.54	1.3%
Wind - IPP	0.76	1.8%
Solar - IPP - Ground Mounted	0.60	1.4%
Solar - Roof Top	2.42	5.7%
Mini Hydro	4.18	9.8%
Municipal Solid Waste	0.16	0.4%
Total	42.64	



Note – Estimated generation from roof top solar, non-telemetered solar and mini hydro plants has been included in the above figures

Estimated Generation Cost : 15th Oct 2024

Plant Type	Energy Cost (Mn LKR)	Non Fuel Energy Cost (Mn LKR)	Capacity Cost (Mn LKR)	Total Cost of Generation (Mn LKR)	Energy Cost per Unit (LKR/kWh)	Non fuel Energy Cost per Unit (LKR/kWh)	Capacity Charge per Unit (LKR/kWh)	Cost of Electricity per Unit (LKR/kWh)
Major Hydro	0.0	0.0	37.6	37.6	0.00	0.00	2.78	2.78
Thermal - Coal	235.9	27.5	44.5	307.9	18.15	2.11	3.43	23.68
Thermal - Furnace Oil	333.5	9.4	50.3	393.2	44.74	1.26	6.74	52.74
Thermal - Diesel	0.0	1.5	19.8	21.2	0.00	0.00	0.00	0.00
Thermal - Naphtha	0.0	1.9	3.2	5.1	0.00	0.00	0.00	0.00
Wind - CEB	0.0	0.0	20.9	20.9	0.00	0.00	38.69	38.69
Wind - IPP	12.3	0.0	0.0	12.3	16.15	0.00	0.00	16.15
Solar - IPP - Ground Mounted	11.7	0.0	0.0	11.7	19.58	0.00	0.00	19.58
Solar - Roof Top	60.3	0.0	0.0	60.3	24.92	0.00	0.00	24.92
Mini Hydro	56.8	0.0	0.0	56.8	13.59	0.00	0.00	13.59
Municipal Solid Waste	6.1	0.0	0.0	6.1	39.00	0.00	0.00	39.00
Total	716.6	40.2	176.2	933.0	16.80	0.94	4.13	21.88

Note -

Start/Stop costs has been excluded in the calculation

Capacity cost is based on the approved BST submission.

Unit Cost of Generation for the day : **21.88 LKR/kWh**
 Total Generation Cost for the day : **932.96 Mn LKR**

Fuel Prices

(as at 1st Oct 2024)

	Price (LKR/Liter or LKR/kg)
Furnace	191.00
Coal	44.20
Naphtha	191.16
Auto Diesel	283.00

Scheduled (Day Ahead) Generation Mix - 15th Oct 2024 (Excluding generation from non telemetered power plants)

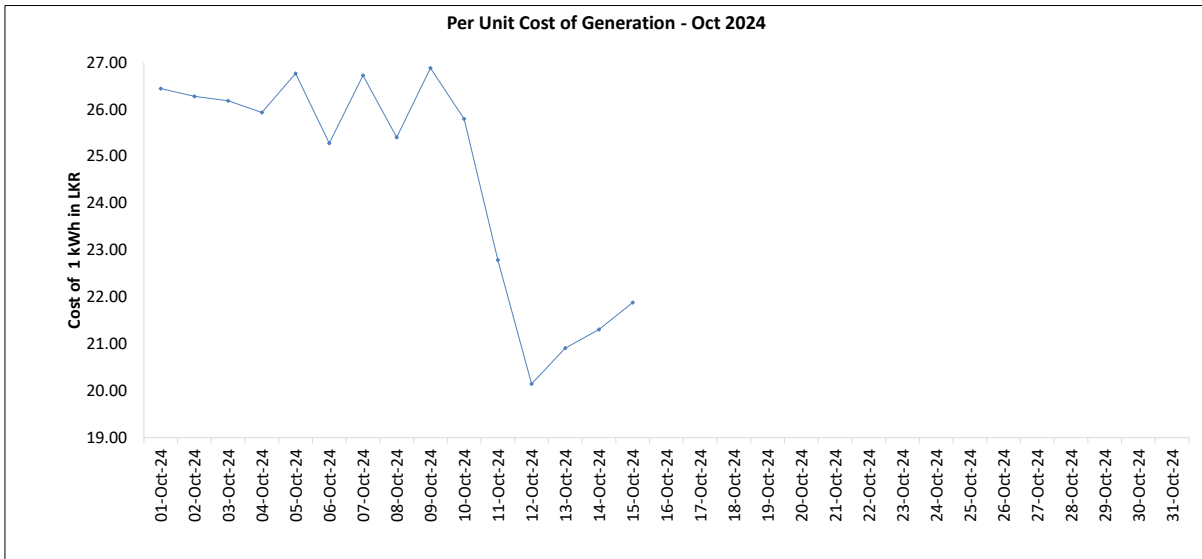
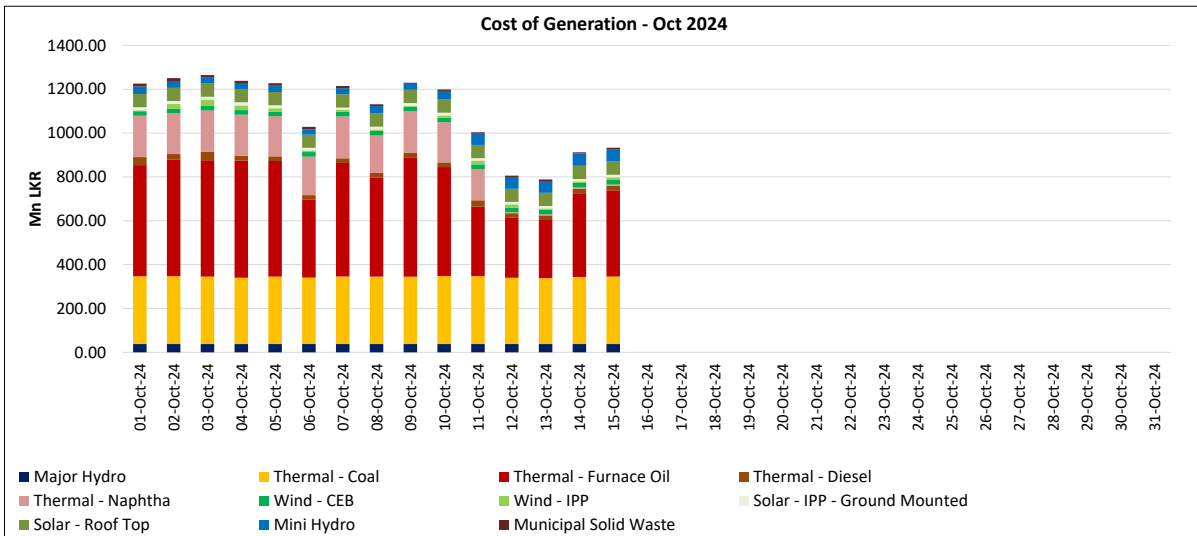
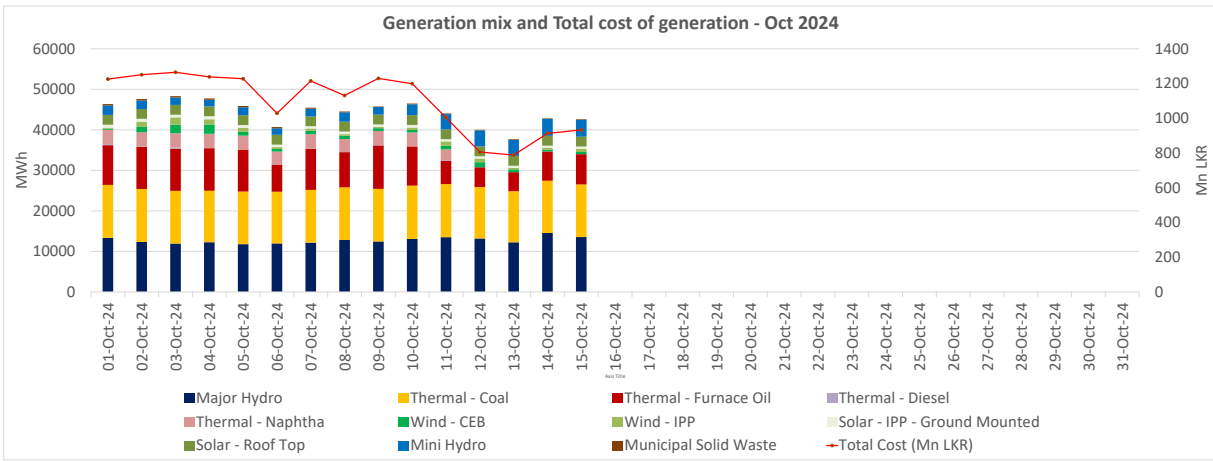
Plant Type	Generation (GWh)	Percentage
Major Hydro	13.2	33%
Thermal - Coal	13.0	32%
Thermal - Furnace Oil	9.5	23%
Thermal - Diesel	0.0	0%
Thermal - Naphtha	0.0	0%
Wind - CEB		
Wind - IPP	0.2	1%
BMP	0.2	0%
Solar	0.3	1%
Mini Hydro	4.1	10%
Total	40.46	

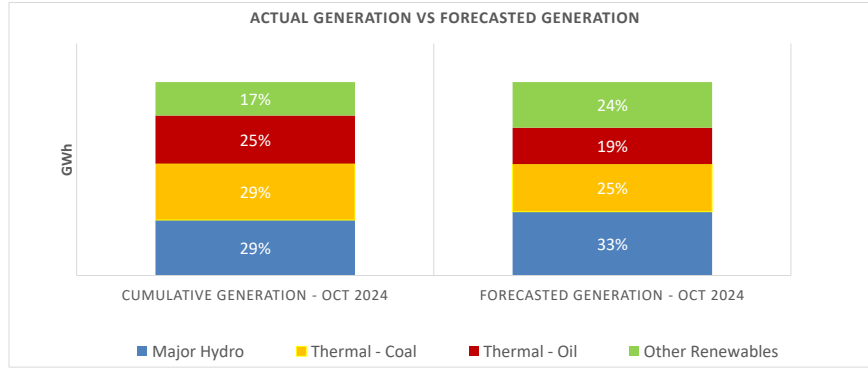
Estimated Generation Cost for the Scheduled Dispatch (Excluding non telemetered NCRE plants) **946.97 Mn LKR**

Actual Generation Mix - 15th Oct 2024 (Excluding generation from non telemetered power plants)

Plant Type	Generation (GWh)	Percentage
Major Hydro	13.5	34%
Thermal - Coal	13.0	33%
Thermal - Furnace Oil	7.5	19%
Thermal - Diesel	0.00	0%
Thermal - Naphtha	0.0	0%
Wind - CEB	0.5	1%
Wind - IPP	0.8	2%
BMP	0.2	0.4%
Solar	0.6	1%
Mini Hydro	3.9	10%
Total	39.99	

Estimated Generation Cost for the Actual Dispatch (Excluding non telemetered NCRE plants) **866.44 Mn LKR**





	Cumulative Generation - Oct 2024 [GWh]	Forecasted Generation - Oct 2024 [GWh]
Major Hydro	191	470
Thermal - Coal	194	350
Thermal - Oil	165	269
Other Renewables	115	336
Total	666	1425

Forecasted Generation - SDDP Oct 2024

Estimated Cost of Generation - Oct 2024 (Mn LKR)

Major Hydro	563.85 Mn LKR
Thermal - Coal	4602.29 Mn LKR
Thermal - Furnace Oil	6625.30 Mn LKR
Thermal - Diesel	365.28 Mn LKR
Thermal - Naphtha	2005.68 Mn LKR
Wind - CEB	312.81 Mn LKR
Wind - IPP	184.60 Mn LKR
Solar - IPP - Ground Mounted	184.56 Mn LKR
Solar - Roof Top	904.51 Mn LKR
Mini Hydro	568.40 Mn LKR
Municipal Solid Waste	135.18 Mn LKR
Total Generation Cost	16,452.47 Mn LKR

Generation Energy Cost (Oct) 13,206.42 Mn LKR

*Generation Capacity Cost (Oct) 2,643.03 Mn LKR

Other Cost (Oct) 603.01 Mn LKR

Average Unit Cost of Generation (Oct) 24.70 LKR/kWh

Note -

* Capacity cost is based on the approved BST submission.