



# Daily Electricity Generation & Cost Estimation Report

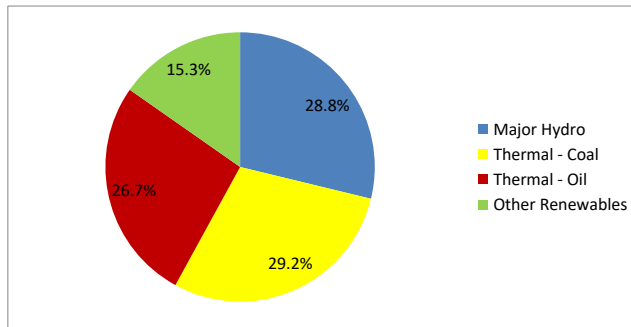
---

8th October 2024



**Daily Generation Mix -8th Oct 2024**

Plant Type	Generation (GWh)	Percentage
Major Hydro	12.82	28.8%
Thermal - Coal	13.00	29.2%
Thermal - Furnace Oil	8.68	19.5%
Thermal - Diesel	0.00	0.0%
Thermal - Naphtha	3.23	7.2%
Wind - CEB	0.81	1.8%
Wind - IPP	0.39	0.9%
Solar - IPP - Ground Mounted	0.65	1.5%
Solar - Roof Top	2.42	5.4%
Mini Hydro	2.33	5.2%
Municipal Solid Waste	0.20	0.4%
<b>Total</b>	<b>44.53</b>	



Note – Estimated generation from roof top solar, non-telemetered solar and mini hydro plants has been included in the above figures

**Estimated Generation Cost : 8th Oct 2024**

Plant Type	Energy Cost (Mn LKR )	Non Fuel Energy Cost (Mn LKR )	Capacity Cost (Mn LKR )	Total Cost of Generation (Mn LKR )	Energy Cost per Unit (LKR/kWh)	Non fuel Energy Cost per Unit (LKR/kWh)	Capacity Charge per Unit (LKR/kWh)	Cost of Electricity per Unit (LKR/kWh)
Major Hydro	0.0	0.0	37.6	37.6	0.00	0.00	2.93	2.93
Thermal - Coal	235.8	27.5	44.5	307.8	18.15	2.11	3.43	23.69
Thermal - Furnace Oil	391.4	9.4	50.3	451.1	45.09	1.08	5.79	51.96
Thermal - Diesel	0.0	1.5	19.8	21.2	0.00	0.00	0.00	0.00
Thermal - Naphtha	166.2	1.9	3.2	171.4	51.52	0.59	0.99	53.10
Wind - CEB	0.0	0.0	20.9	20.9	0.00	0.00	25.68	25.68
Wind - IPP	6.3	0.0	0.0	6.3	16.12	0.00	0.00	16.12
Solar - IPP - Ground Mounted	12.8	0.0	0.0	12.8	19.50	0.00	0.00	19.50
Solar - Roof Top	60.3	0.0	0.0	60.3	24.92	0.00	0.00	24.92
Mini Hydro	34.1	0.0	0.0	34.1	14.61	0.00	0.00	14.61
Municipal Solid Waste	7.7	0.0	0.0	7.7	39.30	0.00	0.00	39.30
<b>Total</b>	<b>914.7</b>	<b>40.2</b>	<b>176.2</b>	<b>1131.1</b>	<b>20.54</b>	<b>0.90</b>	<b>3.96</b>	<b>25.40</b>

Note -

Start/Stop costs has been excluded in the calculation

Capacity cost is based on the approved BST submission.

Unit Cost of Generation for the day : **25.40 LKR/kWh**  
 Total Generation Cost for the day: **1131.08 Mn LKR**

**Fuel Prices**

( as at 1st Oct 2024)

	Price (LKR/Liter or LKR/kg)
Furnace	191.00
Coal	44.20
Naphtha	191.16
Auto Diesel	283.00

**Scheduled (Day Ahead) Generation Mix - 8th Oct 2024 (Excluding generation from non telemetered power plants)**

Plant Type	Generation (GWh)	Percentage
Major Hydro	12.4	28%
Thermal - Coal	13.0	29%
Thermal - Furnace Oil	11.1	25%
Thermal - Diesel	1.5	3%
Thermal - Naphtha	3.6	8%
Wind - CEB		
Wind - IPP	0.6	1%
Solar	0.4	1%
Mini Hydro	1.5	3%
<b>Total</b>	<b>43.99</b>	

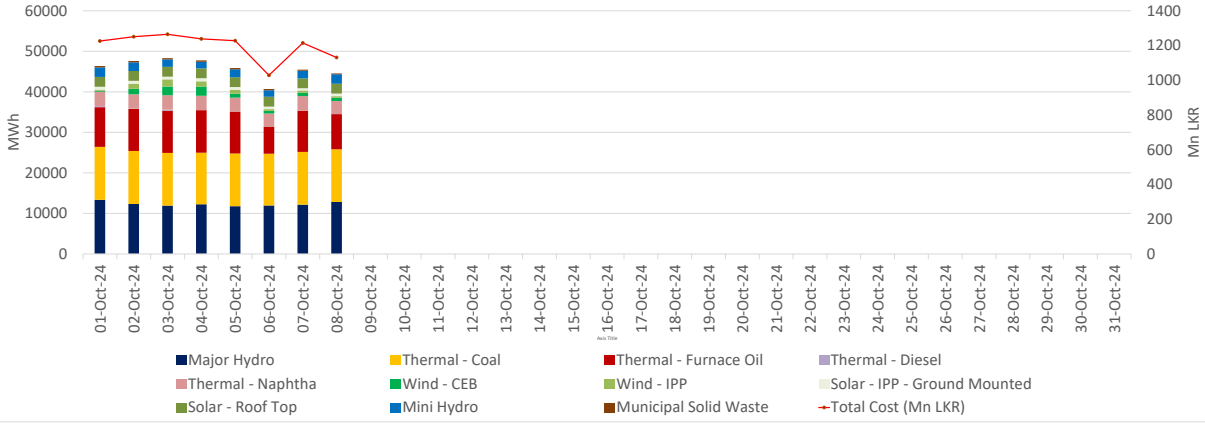
Estimated Generation Cost for the Scheduled Dispatch (Excluding non telemetered NCRE plants) **1331.70 Mn LKR**

**Actual Generation Mix - 8th Oct 2024 (Excluding generation from non telemetered power plants)**

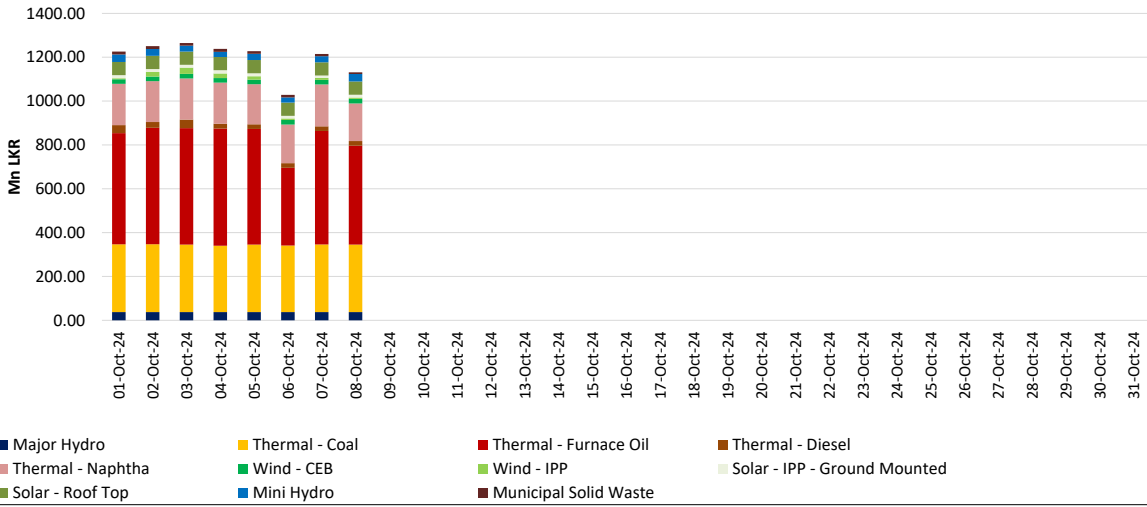
Plant Type	Generation (GWh)	Percentage
Major Hydro	12.8	31%
Thermal - Coal	13.0	31%
Thermal - Furnace Oil	8.7	21%
Thermal - Diesel	0.00	0%
Thermal - Naphtha	3.2	8%
Wind - CEB	0.8	2%
Wind - IPP	0.4	1%
Solar	0.7	2%
Mini Hydro	2.2	5%
<b>Total</b>	<b>41.78</b>	

Estimated Generation Cost for the Actual Dispatch (Excluding non telemetered NCRE plants) **1058.09 Mn LKR**

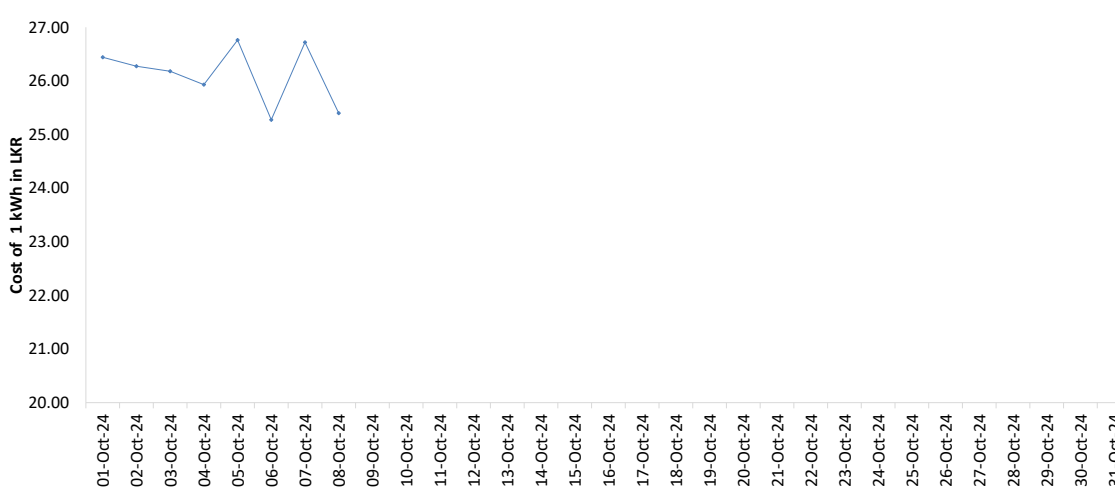
Generation mix and Total cost of generation - Oct 2024

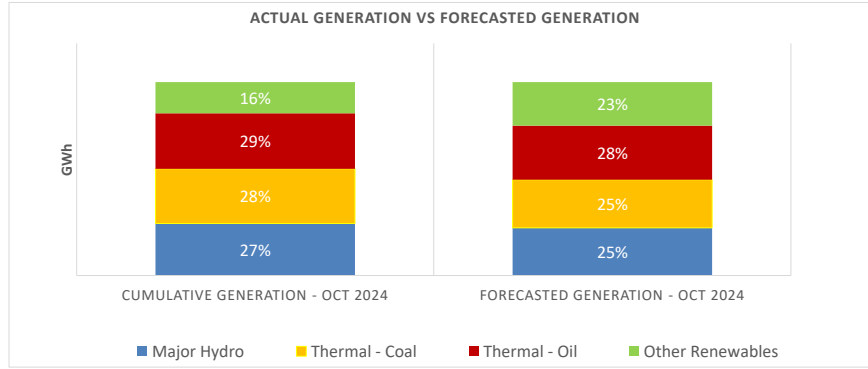


Cost of Generation - Oct 2024



Per Unit Cost of Generation - Oct 2024





	Cumulative Generation - Oct 2024 [GWh]	Forecasted Generation - Oct 2024 [GWh]
Major Hydro	99	347
Thermal - Coal	104	350
Thermal - Oil	105	393
Other Renewables	59	317
<b>Total</b>	<b>367</b>	<b>1407</b>

Forecasted Generation - SDDP Sept 2024

**Estimated Cost of Generation - Oct 2024 ( Mn LKR)**

Major Hydro	300.72 Mn LKR
Thermal - Coal	2456.80 Mn LKR
Thermal - Furnace Oil	3954.26 Mn LKR
Thermal - Diesel	208.82 Mn LKR
Thermal - Naphtha	1470.63 Mn LKR
Wind - CEB	166.83 Mn LKR
Wind - IPP	112.69 Mn LKR
Solar - IPP - Ground Mounted	104.93 Mn LKR
Solar - Roof Top	482.41 Mn LKR
Mini Hydro	229.99 Mn LKR
Municipal Solid Waste	92.94 Mn LKR
<b>Total Generation Cost</b>	<b>9,581.03 Mn LKR</b>

Generation Energy Cost (Oct) 7,849.80 Mn LKR

\*Generation Capacity Cost (Oct) 1,409.62 Mn LKR

Other Cost (Oct) 321.61 Mn LKR

Average Unit Cost of Generation (Oct) 26.14 LKR/kWh

Note -

\* Capacity cost is based on the approved BST submission.