



# Daily Electricity Generation & Cost Estimation Report

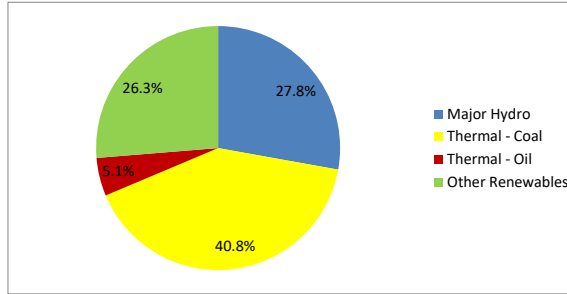
---

9th September 2024



**Daily Generation Mix -9th Sept 2024**

Plant Type	Generation (GWh)	Percentage
Major Hydro	13.35	27.8%
Thermal - Coal	19.58	40.8%
Thermal - Furnace Oil	2.43	5.1%
Thermal - Diesel	0.00	0.0%
Thermal - Naphtha	0.00	0.0%
Wind - CEB	2.36	4.9%
Wind - IPP	2.84	5.9%
Solar - IPP - Ground Mounted	0.70	1.5%
Solar - Roof Top	2.14	4.5%
Mini Hydro	4.27	8.9%
Municipal Solid Waste	0.30	0.6%
<b>Total</b>	<b>47.96</b>	



Note - Estimated generation from roof top solar, non-telemetered solar and mini hydro plants has been included in the above figures

**Estimated Generation Cost : 9th Sept 2024**

Plant Type	Energy Cost (Mn LKR )	Non Fuel Energy Cost (Mn LKR )	Capacity Cost (Mn LKR )	Total Cost of Generation (Mn LKR )	Energy Cost per Unit (LKR/kWh )	Non fuel Energy Cost per Unit (LKR/kWh)	Capacity Charge per Unit (LKR/kWh)	Cost of Electricity per Unit (LKR/kWh)
Major Hydro	0.0	0.0	38.0	38.0	0.00	0.00	2.84	2.84
Thermal - Coal	357.7	28.4	44.5	430.5	18.27	1.45	2.27	21.99
Thermal - Furnace Oil	98.6	9.7	51.7	160.0	40.63	3.99	21.32	65.94
Thermal - Diesel	0.0	1.5	20.0	21.5	0.00	0.00	0.00	0.00
Thermal - Naphtha	0.0	2.0	3.3	5.3	0.00	0.00	0.00	0.00
Wind - CEB	0.0	0.0	21.5	21.5	0.00	0.00	9.13	9.13
Wind - IPP	45.8	0.0	0.0	45.8	16.12	0.00	0.00	16.12
Solar - IPP - Ground Mounted	13.6	0.0	0.0	13.6	19.50	0.00	0.00	19.50
Solar - Roof Top	53.3	0.0	0.0	53.3	24.92	0.00	0.00	24.92
Mini Hydro	62.4	0.0	0.0	62.4	14.61	0.00	0.00	14.61
Municipal Solid Waste	11.7	0.0	0.0	11.7	39.30	0.00	0.00	39.30
<b>Total</b>	<b>643.1</b>	<b>41.5</b>	<b>179.0</b>	<b>863.6</b>	<b>13.41</b>	<b>0.87</b>	<b>3.73</b>	<b>18.01</b>

Note -

Start/Stop costs has been excluded in the calculation

Capacity cost is based on the approved BST submission.

Unit Cost of Generation for the day : **18.01 LKR/kWh**  
 Total Generation Cost for the day: **863.59 Mn LKR**

**Fuel Prices**

( as at 1st Sept 2024)

	Price (LKR/Liter or LKR/kg)
Furnace	181.00
Coal	44.50
Naphtha	197.06
Auto Diesel	307.00

**Scheduled (Day Ahead) Generation Mix - 9th Sept 2024 (Excluding generation from non telemetered power plants)**

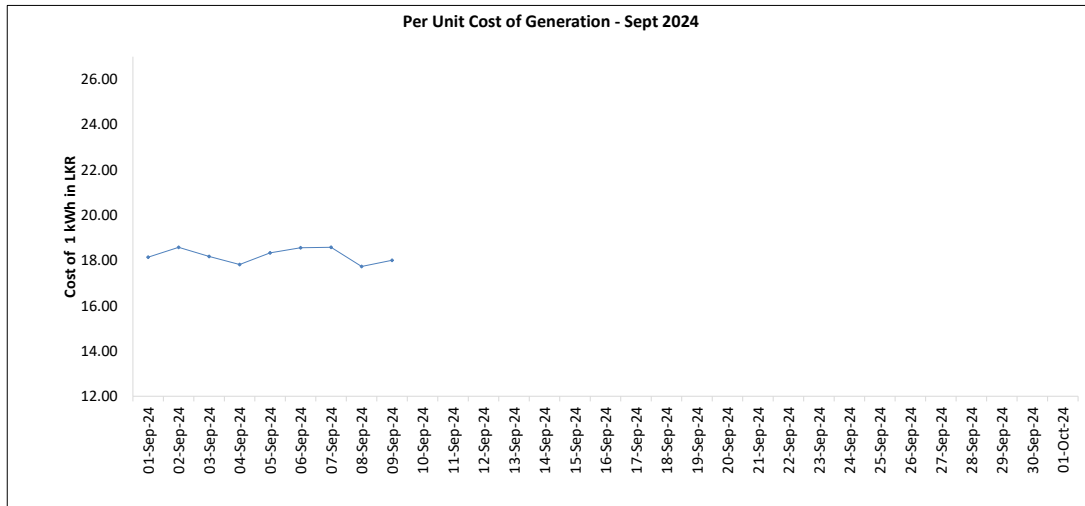
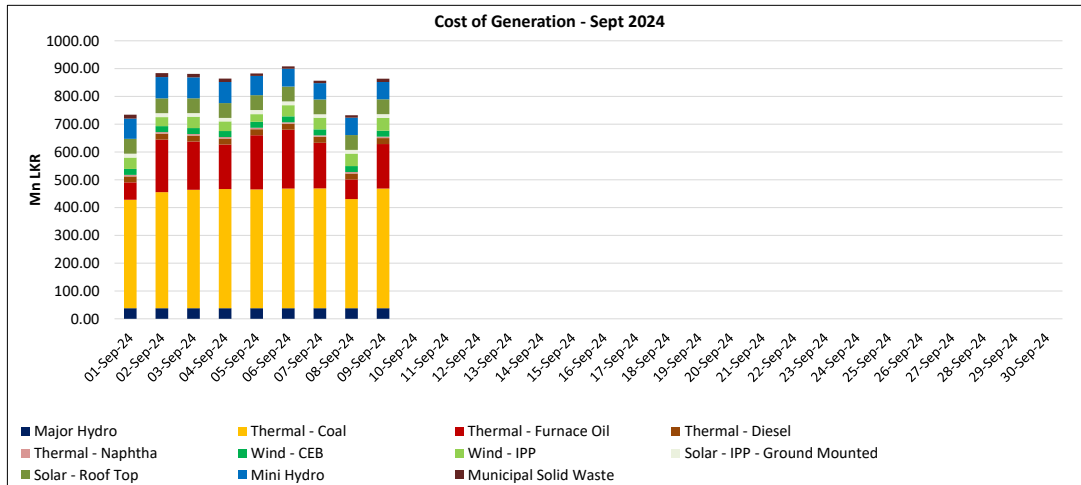
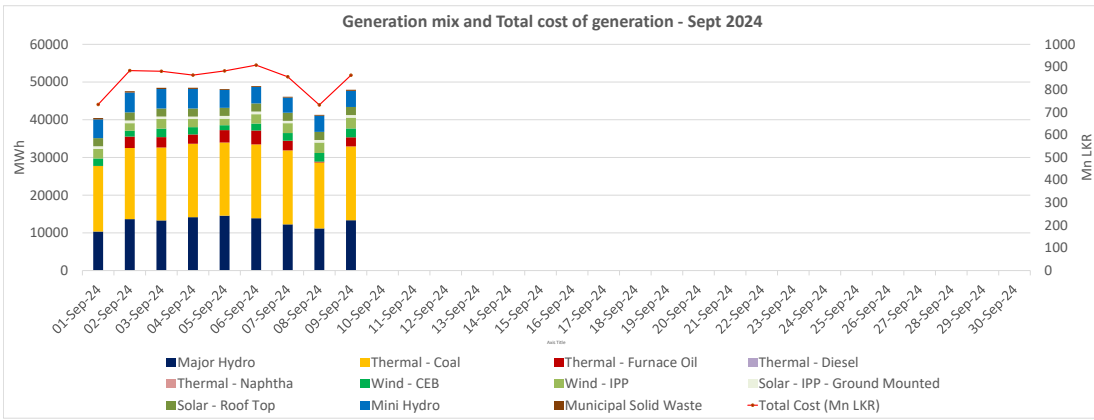
Plant Type	Generation (GWh)	Percentage
Major Hydro	14.4	32%
Thermal - Coal	19.4	43%
Thermal - Furnace Oil	4.1	9%
Thermal - Diesel	0.0	0%
Thermal - Naphtha	0.0	0%
Wind - CEB	3.7	8%
Wind - IPP	0.6	1%
Solar	3.13	7%
Mini Hydro		
<b>Total</b>	<b>45.33</b>	

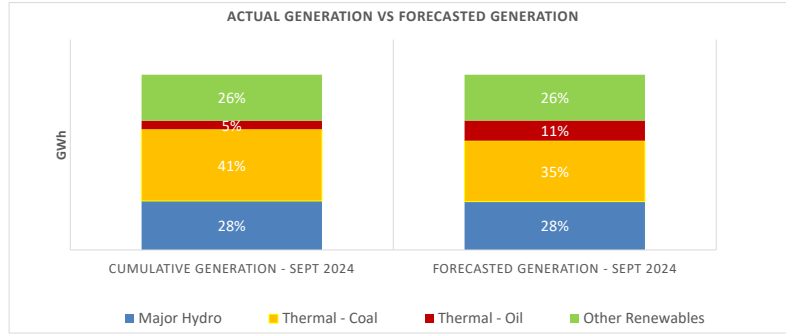
Estimated Generation Cost for the Scheduled Dispatch (Excluding non telemetered NCRE plants) **831.28 Mn LKR**

**Actual Generation Mix - 9th Sept 2024 (Excluding generation from non telemetered power plants)**

Plant Type	Generation (GWh)	Percentage
Major Hydro	13.3	30%
Thermal - Coal	19.6	44%
Thermal - Furnace Oil	2.4	5%
Thermal - Diesel	0.00	0%
Thermal - Naphtha	0.0	0%
Wind - CEB	2.4	5%
Wind - IPP	2.8	6%
Solar	0.7	2%
Mini Hydro	3.4	8%
<b>Total</b>	<b>44.62</b>	

Estimated Generation Cost for the Actual Dispatch (Excluding non telemetered NCRE plants) **785.33 Mn LKR**





	Cumulative Generation - Sept 2024 [GWh]	Forecasted Generation - Sept 2024 [GWh]
Major Hydro	117	380
Thermal - Coal	171	479
Thermal - Oil	20	158
Other Renewables	110	360
<b>Total</b>	<b>417</b>	<b>1377</b>

Forecasted Generation - SDDP Aug 2024

**Estimated Cost of Generation - Sept 2024 ( Mn LKR)**

Major Hydro	341.57 Mn LKR
Thermal - Coal	3775.26 Mn LKR
Thermal - Furnace Oil	1386.86 Mn LKR
Thermal - Diesel	193.27 Mn LKR
Thermal - Naptha	47.54 Mn LKR
Wind - CEB	193.85 Mn LKR
Wind - IPP	349.01 Mn LKR
Solar - IPP - Ground Mounted	121.62 Mn LKR
Solar - Roof Top	479.91 Mn LKR
Mini Hydro	617.55 Mn LKR
Municipal Solid Waste	99.58 Mn LKR
<b>Total Generation Cost</b>	<b>7,606.04 Mn LKR</b>

Generation Energy Cost (Sept)	5,621.21 Mn LKR
*Generation Capacity Cost (Sept)	1,610.96 Mn LKR
Other Cost (Sept)	373.87 Mn LKR

**Average Unit Cost of Generation (Sept) 18.22 LKR/kWh**

Note -

\* Capacity cost is based on the approved BST submission.