



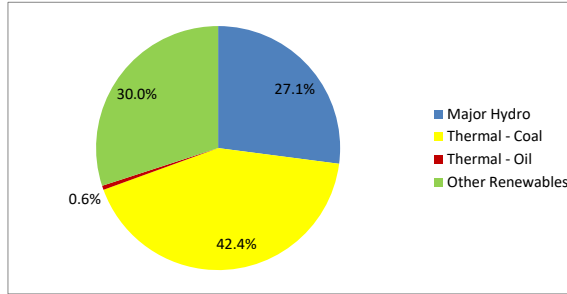
Daily Electricity Generation & Cost Estimation Report

8th September 2024



Daily Generation Mix -8th Sept 2024

Plant Type	Generation (GWh)	Percentage
Major Hydro	11.17	27.1%
Thermal - Coal	17.50	42.4%
Thermal - Furnace Oil	0.23	0.6%
Thermal - Diesel	0.00	0.0%
Thermal - Naphtha	0.00	0.0%
Wind - CEB	2.28	5.5%
Wind - IPP	2.78	6.7%
Solar - IPP - Ground Mounted	0.69	1.7%
Solar - Roof Top	2.14	5.2%
Mini Hydro	4.28	10.4%
Municipal Solid Waste	0.22	0.5%
Total	41.29	



Note - Estimated generation from roof top solar, non-telemetered solar and mini hydro plants has been included in the above figures

Estimated Generation Cost : 8th Sept 2024

Plant Type	Energy Cost (Mn LKR)	Non Fuel Energy Cost (Mn LKR)	Capacity Cost (Mn LKR)	Total Cost of Generation (Mn LKR)	Energy Cost per Unit (LKR/kWh)	Non fuel Energy Cost per Unit (LKR/kWh)	Capacity Charge per Unit (LKR/kWh)	Cost of Electricity per Unit (LKR/kWh)
Major Hydro	0.0	0.0	38.0	38.0	0.00	0.00	3.40	3.40
Thermal - Coal	319.7	28.4	44.5	392.6	18.27	1.62	2.54	22.43
Thermal - Furnace Oil	9.2	9.7	51.7	70.6	40.28	42.51	226.83	309.62
Thermal - Diesel	0.0	1.5	20.0	21.5	0.00	0.00	0.00	0.00
Thermal - Naphtha	0.0	2.0	3.3	5.3	0.00	0.00	0.00	0.00
Wind - CEB	0.0	0.0	21.5	21.5	0.00	0.00	9.44	9.44
Wind - IPP	44.8	0.0	0.0	44.8	16.12	0.00	0.00	16.12
Solar - IPP - Ground Mounted	13.4	0.0	0.0	13.4	19.50	0.00	0.00	19.50
Solar - Roof Top	53.3	0.0	0.0	53.3	24.92	0.00	0.00	24.92
Mini Hydro	62.6	0.0	0.0	62.6	14.61	0.00	0.00	14.61
Municipal Solid Waste	8.7	0.0	0.0	8.7	39.30	0.00	0.00	39.30
Total	511.7	41.5	179.0	732.2	12.39	1.01	4.33	17.73

Note -

Start/Stop costs has been excluded in the calculation

Capacity cost is based on the approved BST submission.

Unit Cost of Generation for the day : **17.73 LKR/kWh**
 Total Generation Cost for the day: **732.23 Mn LKR**

Fuel Prices

(as at 1st Sept 2024)

	Price (LKR/Liter or LKR/kg)
Furnace	181.00
Coal	44.50
Naphtha	197.06
Auto Diesel	307.00

Scheduled (Day Ahead) Generation Mix - 8th Sept 2024 (Excluding generation from non telemetered power plants)

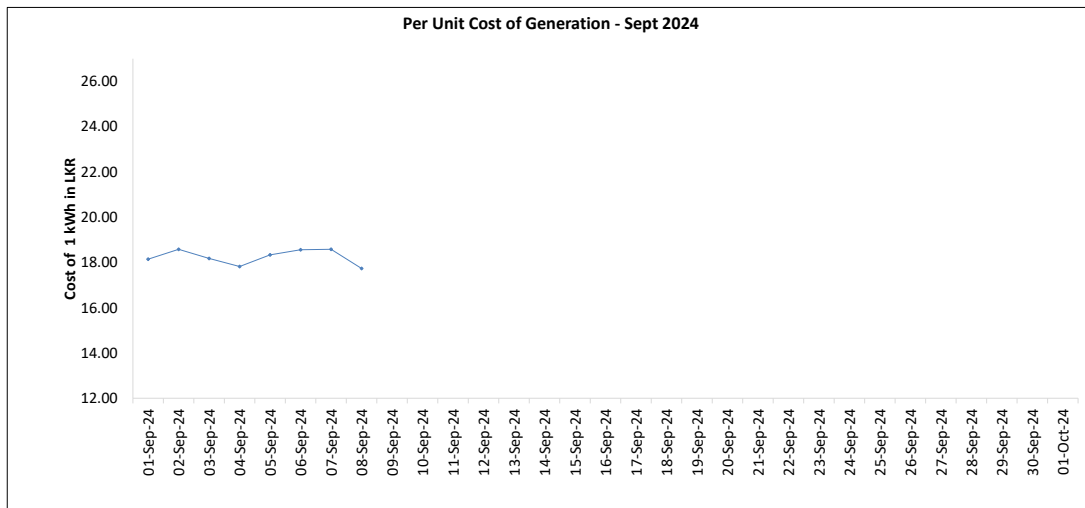
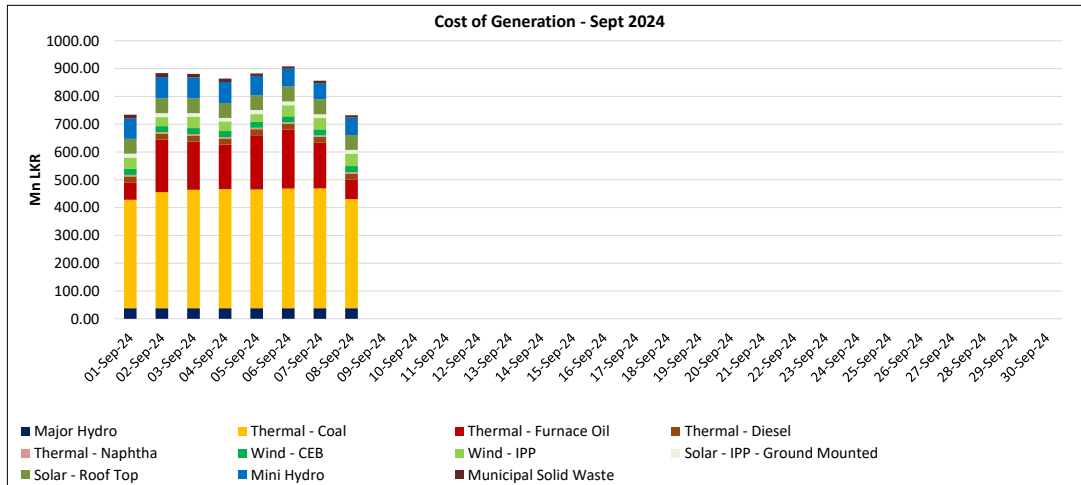
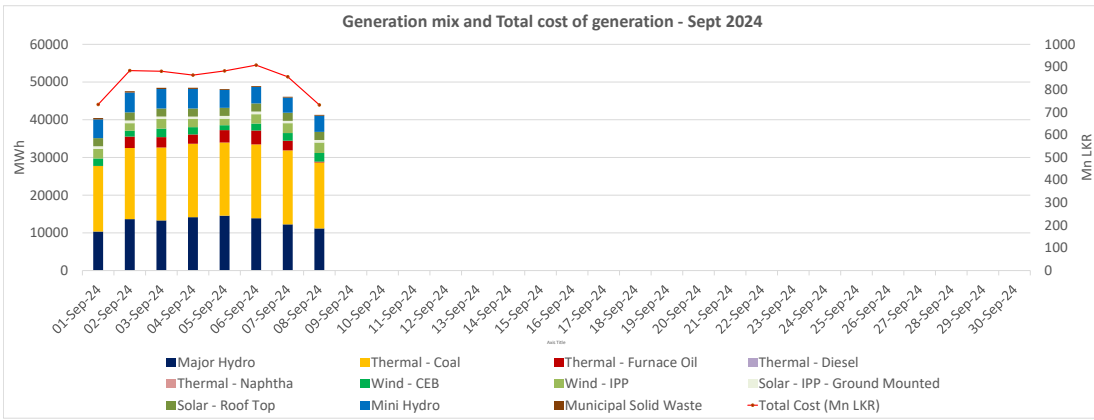
Plant Type	Generation (GWh)	Percentage
Major Hydro	12.4	32%
Thermal - Coal	18.5	47%
Thermal - Furnace Oil	1.0	3%
Thermal - Diesel	0.0	0%
Thermal - Naphtha	0.0	0%
Wind - CEB	3.0	8%
Wind - IPP		
Solar	0.6	2%
Mini Hydro	3.72	9%
Total	39.21	

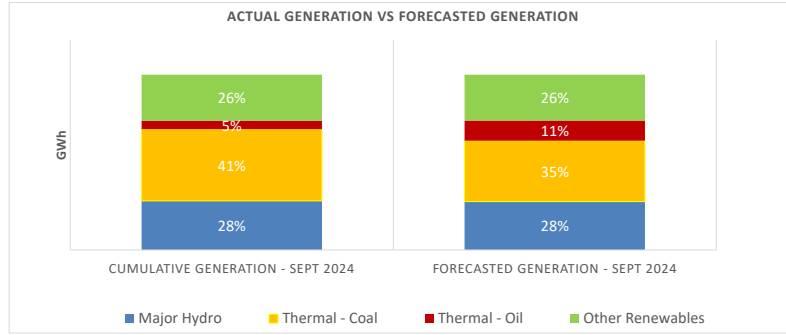
Estimated Generation Cost for the Scheduled Dispatch (Excluding non telemetered NCRE plants) **690.46 Mn LKR**

Actual Generation Mix - 8th Sept 2024 (Excluding generation from non telemetered power plants)

Plant Type	Generation (GWh)	Percentage
Major Hydro	11.2	29%
Thermal - Coal	17.5	46%
Thermal - Furnace Oil	0.2	1%
Thermal - Diesel	0.00	0%
Thermal - Naphtha	0.0	0%
Wind - CEB	2.3	6%
Wind - IPP	2.8	7%
Solar	0.7	2%
Mini Hydro	3.4	9%
Total	38.02	

Estimated Generation Cost for the Actual Dispatch (Excluding non telemetered NCRE plants) **656.88 Mn LKR**





	Cumulative Generation - Sept 2024 [GWh]	Forecasted Generation - Sept 2024 [GWh]
Major Hydro	103	380
Thermal - Coal	151	479
Thermal - Oil	18	158
Other Renewables	97	360
Total	369	1377

Forecasted Generation - SDDP Aug 2024

Estimated Cost of Generation - Sept 2024 (Mn LKR)

Major Hydro	303.62 Mn LKR
Thermal - Coal	3344.73 Mn LKR
Thermal - Furnace Oil	1226.89 Mn LKR
Thermal - Diesel	171.80 Mn LKR
Thermal - Naptha	42.26 Mn LKR
Wind - CEB	172.31 Mn LKR
Wind - IPP	303.17 Mn LKR
Solar - IPP - Ground Mounted	108.01 Mn LKR
Solar - Roof Top	426.59 Mn LKR
Mini Hydro	555.17 Mn LKR
Municipal Solid Waste	87.91 Mn LKR
Total Generation Cost	6,742.45 Mn LKR

Generation Energy Cost (Sept) 4,978.15 Mn LKR

*Generation Capacity Cost (Sept) 1,431.96 Mn LKR

Other Cost (Sept) 332.33 Mn LKR

Average Unit Cost of Generation (Sept) 18.25 LKR/kWh

Note -

* Capacity cost is based on the approved BST submission.