



# Daily Electricity Generation & Cost Estimation Report

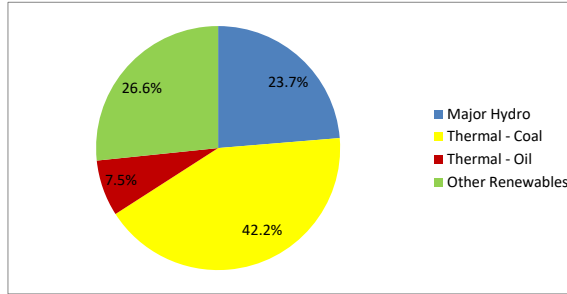
---

31st August 2024



**Daily Generation Mix -31st August 2024**

Plant Type	Generation (GWh)	Percentage
Major Hydro	10.48	23.7%
Thermal - Coal	18.67	42.2%
Thermal - Furnace Oil	0.69	1.5%
Thermal - Diesel	0.00	0.0%
Thermal - Naphtha	2.61	5.9%
Wind - CEB	2.37	5.3%
Wind - IPP	2.63	6.0%
Solar - IPP - Ground Mounted	0.66	1.5%
Solar - Roof Top	1.92	4.3%
Mini Hydro	3.85	8.7%
Municipal Solid Waste	0.35	0.8%
<b>Total</b>	<b>44.23</b>	



Note - Estimated generation from roof top solar, non-telemetered solar and mini hydro plants has been included in the above figures

**Estimated Generation Cost : 31st Aug 2024**

Plant Type	Energy Cost (Mn LKR )	Non Fuel Energy Cost (Mn LKR )	Capacity Cost (Mn LKR )	Total Cost of Generation (Mn LKR )	Energy Cost per Unit (LKR/kWh )	Non fuel Energy Cost per Unit (LKR/kWh)	Capacity Charge per Unit (LKR/kWh)	Cost of Electricity per Unit (LKR/kWh)
Major Hydro	0.0	0.0	36.3	36.3	0.00	0.00	3.47	3.47
Thermal - Coal	341.1	27.5	41.8	410.4	18.27	1.47	2.24	21.98
Thermal - Furnace Oil	27.4	9.4	51.2	88.0	40.03	13.69	74.80	128.51
Thermal - Diesel	0.0	1.5	19.8	21.2	0.00	0.00	0.00	0.00
Thermal - Naphtha	139.0	1.9	3.2	144.2	53.25	0.74	1.22	55.21
Wind - CEB	0.0	0.0	20.8	20.8	0.00	0.00	8.81	8.81
Wind - IPP	42.5	0.0	0.0	42.5	16.12	0.00	0.00	16.12
Solar - IPP - Ground Mounted	12.9	0.0	0.0	12.9	19.50	0.00	0.00	19.50
Solar - Roof Top	47.8	0.0	0.0	47.8	24.92	0.00	0.00	24.92
Mini Hydro	56.2	0.0	0.0	56.2	14.61	0.00	0.00	14.61
Municipal Solid Waste	13.9	0.0	0.0	13.9	39.30	0.00	0.00	39.30
<b>Total</b>	<b>680.9</b>	<b>40.2</b>	<b>173.2</b>	<b>894.3</b>	<b>15.39</b>	<b>0.91</b>	<b>3.92</b>	<b>20.22</b>

Note -

Start/Stop costs has been excluded in the calculation

Sobadhavi plant is currently in the testing stage; hence, generation cost has not been considered.

Capacity cost is based on the approved BST submission.

Unit Cost of Generation for the day : **20.22 LKR/kWh**  
 Total Generation Cost for the day: **894.26 Mn LKR**

**Fuel Prices**

(\*as at 27th Aug 2024)

	Price (LKR/Liter or LKR/kg)
Furnace	181.00
*Coal	44.50
Naphtha	197.60
Auto Diesel	317.00

**Scheduled (Day Ahead) Generation Mix - 31st Aug 2024 (Excluding generation from non telemetered power plants)**

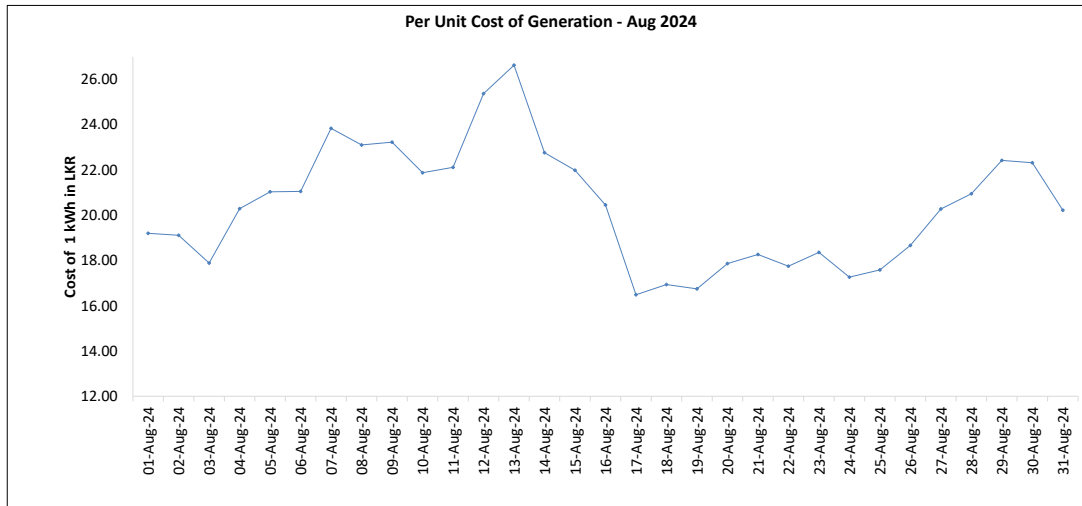
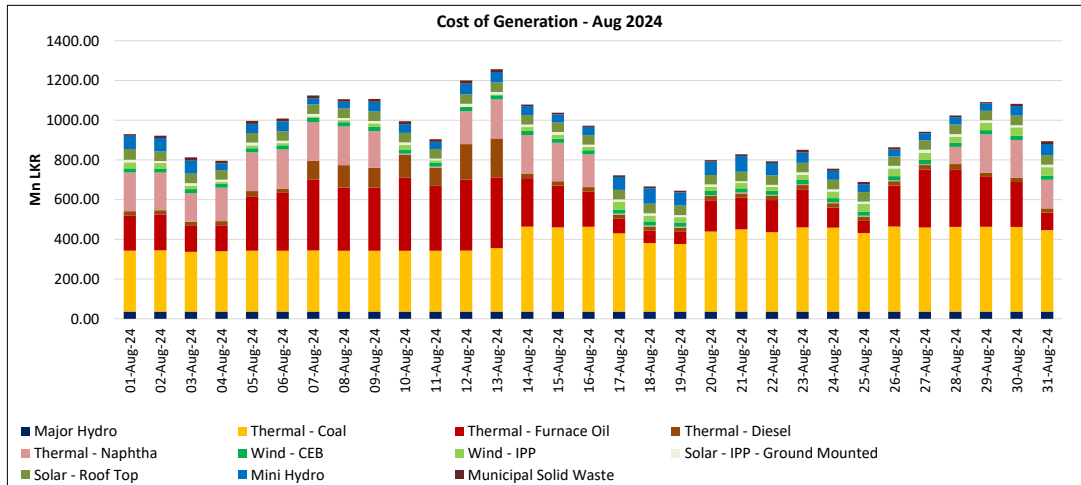
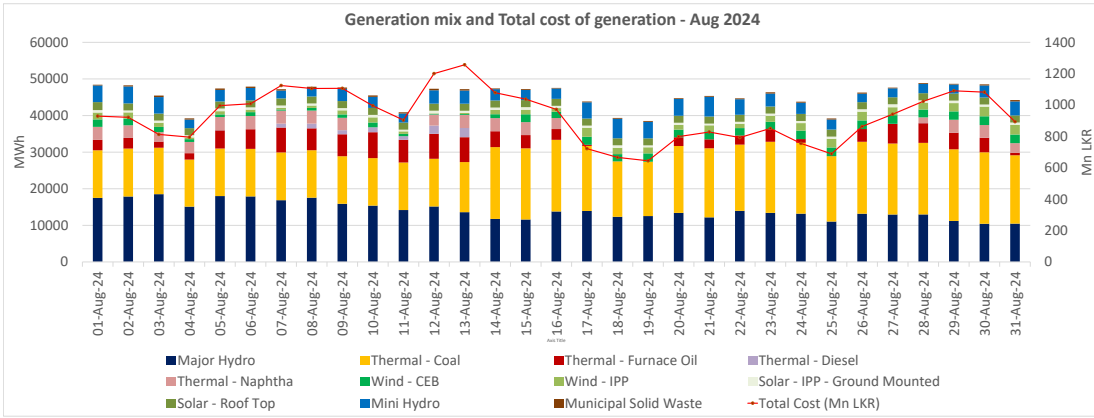
Plant Type	Generation (GWh)	Percentage
Major Hvdro	11.6	26%
Thermal - Coal	19.4	44%
Thermal - Furnace Oil	3.7	9%
Thermal - Diesel	0.0	0%
Thermal - Naphtha	3.6	8%
Wind - CEB	2.9	7%
Wind - IPP	0.5	1%
Solar	1.96	4%
Mini Hydro	1.96	4%
<b>Total</b>	<b>43.72</b>	

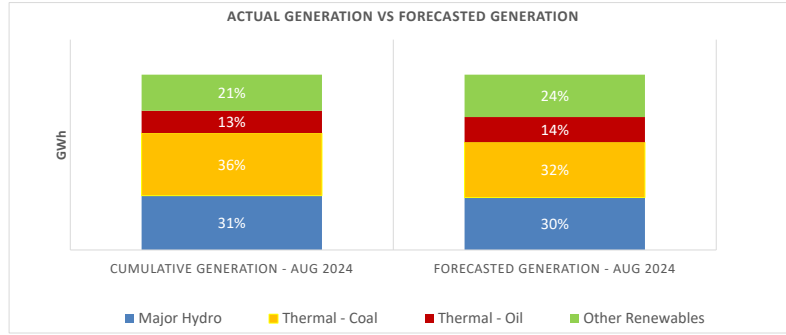
Estimated Generation Cost for the Scheduled Dispatch (Excluding non telemetered NCRE plants) **981.61 Mn LKR**

**Actual Generation Mix - 31st Aug 2024 (Excluding generation from non telemetered power plants)**

Plant Type	Generation (GWh)	Percentage
Major Hvdro	10.5	25%
Thermal - Coal	18.7	45%
Thermal - Furnace Oil	0.7	2%
Thermal - Diesel	0.00	0%
Thermal - Naphtha	2.6	6%
Wind - CEB	2.4	6%
Wind - IPP	2.6	6%
Solar	0.7	2%
Mini Hydro	3.0	7%
<b>Total</b>	<b>41.15</b>	

Estimated Generation Cost for the Actual Dispatch (Excluding non telemetered NCRE plants) **827.86 Mn LKR**





	Cumulative Generation - Aug 2024 [GWh]	Forecasted Generation - Aug 2024 [GWh]
Major Hydro	438	433
Thermal - Coal	504	456
Thermal - Oil	180	208
Other Renewables	290	350
<b>Total</b>	<b>1413</b>	<b>1447</b>

Forecasted Generation - SDDP Aug 2024

**Estimated Cost of Generation - Aug 2024 ( Mn LKR)**

Major Hydro	1126.17 Mn LKR
Thermal - Coal	11353.93 Mn LKR
Thermal - Furnace Oil	6598.93 Mn LKR
Thermal - Diesel	1412.96 Mn LKR
Thermal - Naphtha	3263.18 Mn LKR
Wind - CEB	645.65 Mn LKR
Wind - IPP	724.17 Mn LKR
Solar - IPP - Ground Mounted	376.39 Mn LKR
Solar - Roof Top	1489.33 Mn LKR
Mini Hydro	1559.33 Mn LKR
Municipal Solid Waste	347.58 Mn LKR
<b>Total Generation Cost</b>	<b>28,897.62 Mn LKR</b>

\* Adjusted total cost based on updated fuel prices

Generation Energy Cost (Aug)	22,306.31 Mn LKR
*Generation Capacity Cost (Aug)	5,368.72 Mn LKR
Other Cost (Aug)	1,246.23 Mn LKR

**Average Unit Cost of Generation (Aug) 20.46 LKR/kWh**

Note -

\* Capacity cost is based on the approved BST submission.