



# Daily Electricity Generation & Cost Estimation Report

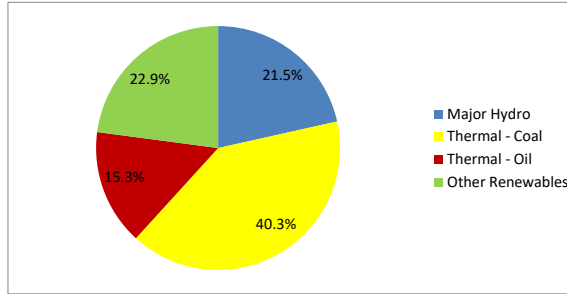
---

30th August 2024



**Daily Generation Mix -30th August 2024**

Plant Type	Generation (GWh)	Percentage
Major Hydro	10.43	21.5%
Thermal - Coal	19.53	40.3%
Thermal - Furnace Oil	3.95	8.1%
Thermal - Diesel	0.00	0.0%
Thermal - Naphtha	3.49	7.2%
Wind - CEB	2.40	5.0%
Wind - IPP	2.63	5.4%
Solar - IPP - Ground Mounted	0.58	1.2%
Solar - Roof Top	1.92	4.0%
Mini Hydro	3.29	6.8%
Municipal Solid Waste	0.29	0.6%
<b>Total</b>	<b>48.52</b>	



Note - Estimated generation from roof top solar, non-telemetered solar and mini hydro plants has been included in the above figures

**Estimated Generation Cost : 30th Aug 2024**

Plant Type	Energy Cost (Mn LKR )	Non Fuel Energy Cost (Mn LKR )	Capacity Cost (Mn LKR )	Total Cost of Generation (Mn LKR )	Energy Cost per Unit (LKR/kWh )	Non fuel Energy Cost per Unit (LKR/kWh)	Capacity Charge per Unit (LKR/kWh)	Cost of Electricity per Unit (LKR/kWh)
Major Hydro	0.0	0.0	36.3	36.3	0.00	0.00	3.48	3.48
Thermal - Coal	356.9	27.5	41.8	426.2	18.27	1.41	2.14	21.82
Thermal - Furnace Oil	165.6	9.4	51.2	226.2	41.90	2.37	12.96	57.24
Thermal - Diesel	0.0	1.5	19.8	21.2	0.00	0.00	0.00	0.00
Thermal - Naphtha	185.7	1.9	3.2	190.8	53.25	0.55	0.92	54.72
Wind - CEB	0.0	0.0	20.8	20.8	0.00	0.00	8.67	8.67
Wind - IPP	42.4	0.0	0.0	42.4	16.12	0.00	0.00	16.12
Solar - IPP - Ground Mounted	11.3	0.0	0.0	11.3	19.50	0.00	0.00	19.50
Solar - Roof Top	47.8	0.0	0.0	47.8	24.92	0.00	0.00	24.92
Mini Hydro	48.0	0.0	0.0	48.0	14.61	0.00	0.00	14.61
Municipal Solid Waste	11.4	0.0	0.0	11.4	39.30	0.00	0.00	39.30
<b>Total</b>	<b>869.1</b>	<b>40.2</b>	<b>173.2</b>	<b>1082.5</b>	<b>17.92</b>	<b>0.83</b>	<b>3.57</b>	<b>22.31</b>

Note -

Start/Stop costs has been excluded in the calculation

Sobadhavi plant is currently in the testing stage; hence, generation cost has not been considered.

Capacity cost is based on the approved BST submission.

Unit Cost of Generation for the day : **22.31 LKR/kWh**  
 Total Generation Cost for the day: **1082.53 Mn LKR**

**Fuel Prices**

(\*as at 27th Aug 2024)

	Price (LKR/Liter or LKR/kg)
Furnace	181.00
*Coal	44.50
Naphtha	197.60
Auto Diesel	317.00

**Scheduled (Day Ahead) Generation Mix - 30th Aug 2024 (Excluding generation from non telemetered power plants)**

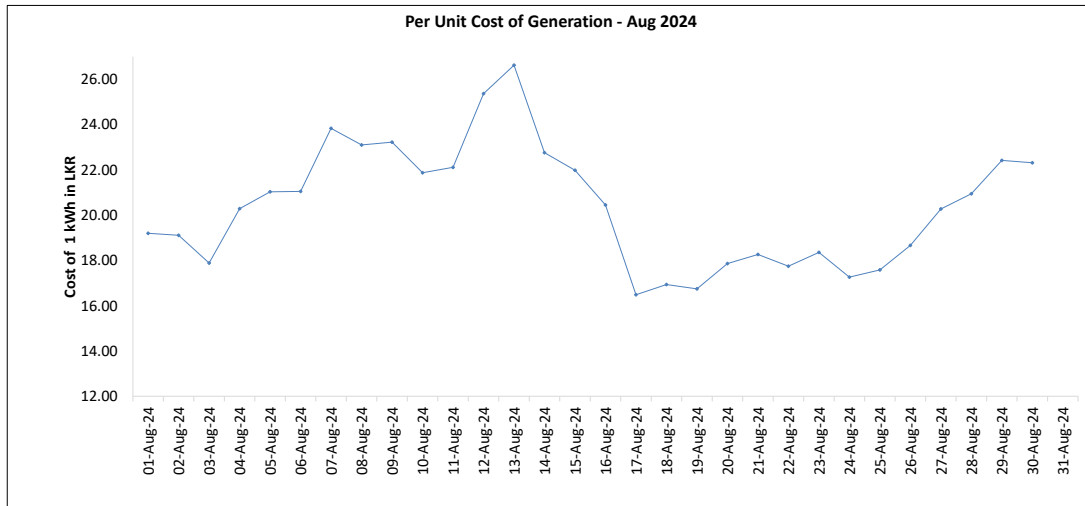
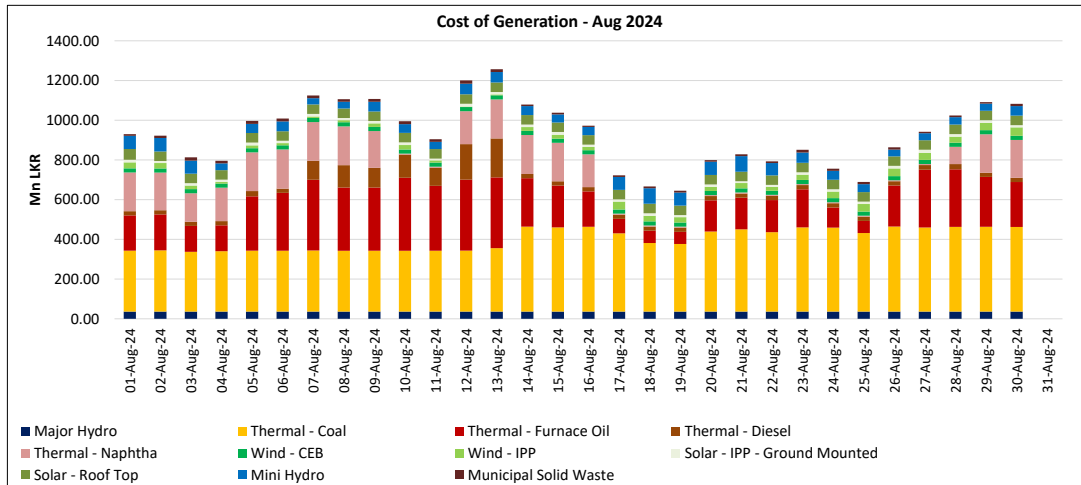
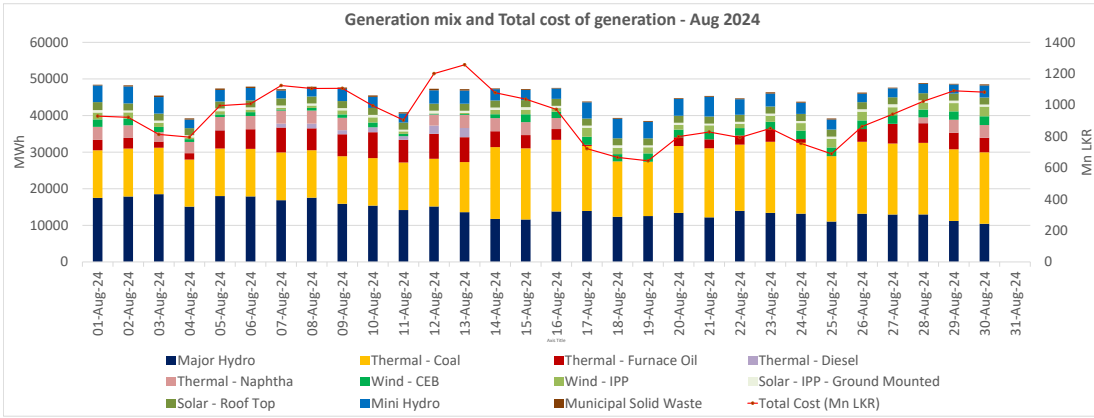
Plant Type	Generation (GWh)	Percentage
Major Hydro	12.4	27%
Thermal - Coal	19.4	42%
Thermal - Furnace Oil	3.7	8%
Thermal - Diesel	0.0	0%
Thermal - Naphtha	3.6	8%
Wind - CEB		
Wind - IPP	4.6	10%
Solar	0.5	1%
Mini Hydro	2.1	4%
<b>Total</b>	<b>46.35</b>	

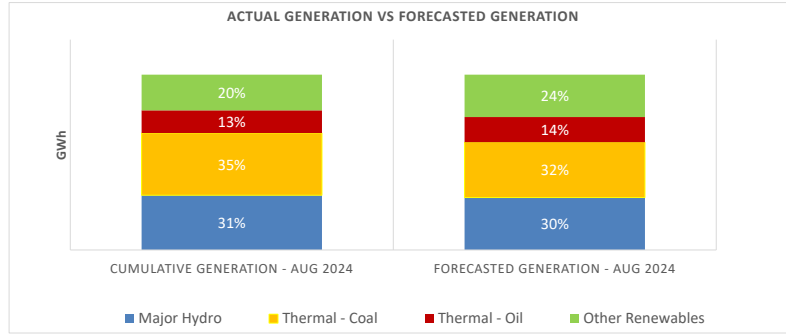
Estimated Generation Cost for the Scheduled Dispatch (Excluding non telemetered NCRE plants) **989.59 Mn LKR**

**Actual Generation Mix - 30th Aug 2024 (Excluding generation from non telemetered power plants)**

Plant Type	Generation (GWh)	Percentage
Major Hydro	10.4	23%
Thermal - Coal	19.5	43%
Thermal - Furnace Oil	4.0	9%
Thermal - Diesel	0.00	0%
Thermal - Naphtha	3.5	8%
Wind - CEB	2.4	5%
Wind - IPP	2.6	6%
Solar	0.6	1%
Mini Hydro	2.6	6%
<b>Total</b>	<b>45.62</b>	

Estimated Generation Cost for the Actual Dispatch (Excluding non telemetered NCRE plants) **1013.24 Mn LKR**





	Cumulative Generation - Aug 2024 [GWh]	Forecasted Generation - Aug 2024 [GWh]
Major Hydro	427	433
Thermal - Coal	485	456
Thermal - Oil	177	208
Other Renewables	278	350
<b>Total</b>	<b>1368</b>	<b>1447</b>

Forecasted Generation - SDDP Aug 2024

**Estimated Cost of Generation - Aug 2024 ( Mn LKR)**

Major Hydro	1089.84 Mn LKR
Thermal - Coal	10943.53 Mn LKR
Thermal - Furnace Oil	6510.90 Mn LKR
Thermal - Diesel	1391.75 Mn LKR
Thermal - Naphtha	3119.02 Mn LKR
Wind - CEB	624.82 Mn LKR
Wind - IPP	681.71 Mn LKR
Solar - IPP - Ground Mounted	363.50 Mn LKR
Solar - Roof Top	1441.49 Mn LKR
Mini Hydro	1503.12 Mn LKR
Municipal Solid Waste	333.67 Mn LKR
<b>Total Generation Cost</b>	<b>28,003.36 Mn LKR</b>

\* Adjusted total cost based on updated fuel prices

Generation Energy Cost (Aug)	21,625.44 Mn LKR
*Generation Capacity Cost (Aug)	5,195.54 Mn LKR
Other Cost (Aug)	1,206.03 Mn LKR
<b>Average Unit Cost of Generation (Aug)</b>	<b>20.47 LKR/kWh</b>

Note -

\* Capacity cost is based on the approved BST submission.