



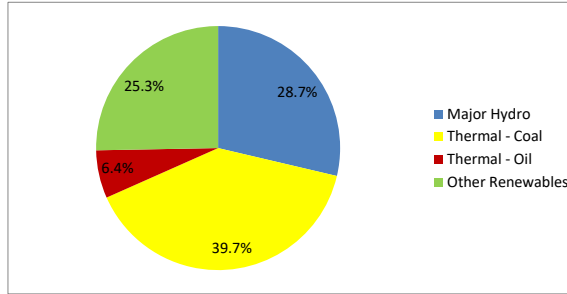
Daily Electricity Generation & Cost Estimation Report

2nd September 2024



Daily Generation Mix -2nd Sept 2024

Plant Type	Generation (GWh)	Percentage
Major Hydro	13.64	28.7%
Thermal - Coal	18.87	39.7%
Thermal - Furnace Oil	3.02	6.4%
Thermal - Diesel	0.00	0.0%
Thermal - Naphtha	0.00	0.0%
Wind - CEB	1.55	3.3%
Wind - IPP	2.01	4.2%
Solar - IPP - Ground Mounted	0.72	1.5%
Solar - Roof Top	2.14	4.5%
Mini Hydro	5.25	11.0%
Municipal Solid Waste	0.36	0.8%
Total	47.57	



Note - Estimated generation from roof top solar, non-telemetered solar and mini hydro plants has been included in the above figures

Estimated Generation Cost : 2nd Sept 2024

Plant Type	Energy Cost (Mn LKR)	Non Fuel Energy Cost (Mn LKR)	Capacity Cost (Mn LKR)	Total Cost of Generation (Mn LKR)	Energy Cost per Unit (LKR/kWh)	Non fuel Energy Cost per Unit (LKR/kWh)	Capacity Charge per Unit (LKR/kWh)	Cost of Electricity per Unit (LKR/kWh)
Major Hydro	0.0	0.0	38.0	38.0	0.00	0.00	2.78	2.78
Thermal - Coal	344.8	28.4	44.5	417.7	18.27	1.50	2.36	22.13
Thermal - Furnace Oil	127.8	9.7	51.7	189.2	42.28	3.21	17.11	62.60
Thermal - Diesel	0.0	1.5	20.0	21.5	0.00	0.00	0.00	0.00
Thermal - Naphtha	0.0	2.0	3.3	5.3	0.00	0.00	0.00	0.00
Wind - CEB	0.0	0.0	21.5	21.5	0.00	0.00	13.91	13.91
Wind - IPP	32.4	0.0	0.0	32.4	16.12	0.00	0.00	16.12
Solar - IPP - Ground Mounted	14.1	0.0	0.0	14.1	19.50	0.00	0.00	19.50
Solar - Roof Top	53.3	0.0	0.0	53.3	24.92	0.00	0.00	24.92
Mini Hydro	76.7	0.0	0.0	76.7	14.61	0.00	0.00	14.61
Municipal Solid Waste	14.2	0.0	0.0	14.2	39.30	0.00	0.00	39.30
Total	663.3	41.5	179.0	883.8	13.94	0.87	3.76	18.58

Note -

Start/Stop costs has been excluded in the calculation

Capacity cost is based on the approved BST submission.

Unit Cost of Generation for the day : **18.58 LKR/kWh**
 Total Generation Cost for the day: **883.84 Mn LKR**

Fuel Prices

(as at 1st Sept 2024)

	Price (LKR/Liter or LKR/kg)
Furnace	181.00
Coal	44.50
Naphtha	197.06
Auto Diesel	307.00

Scheduled (Day Ahead) Generation Mix - 2nd Sept 2024 (Excluding generation from non telemetered power plants)

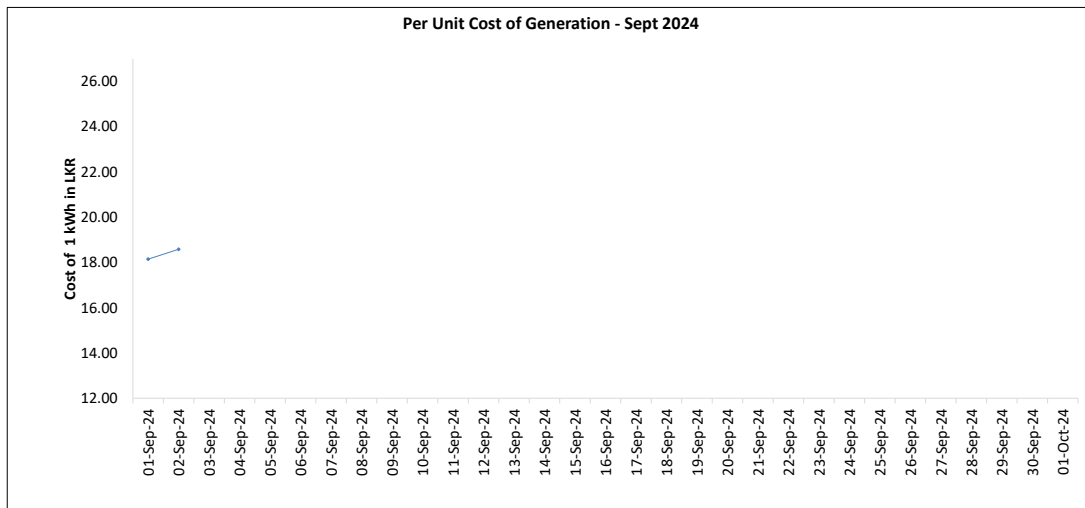
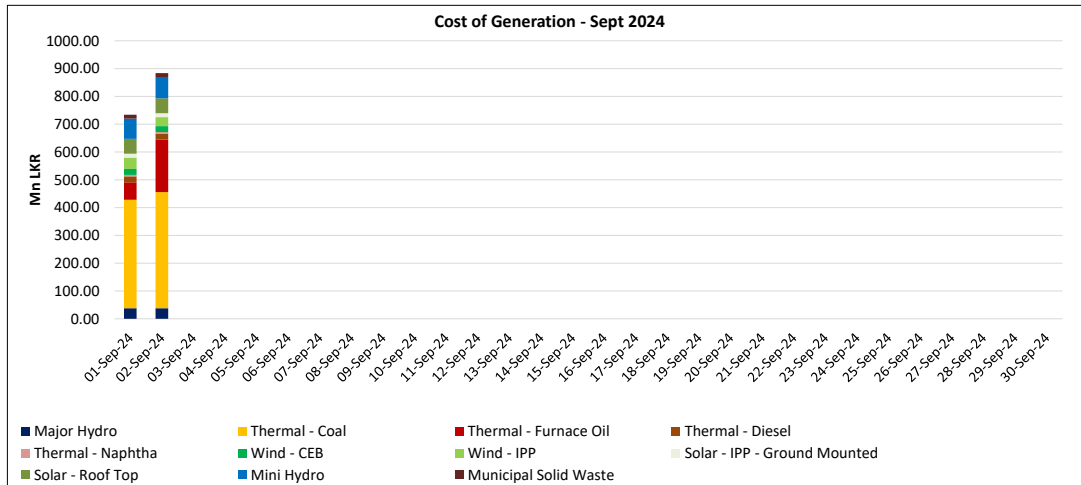
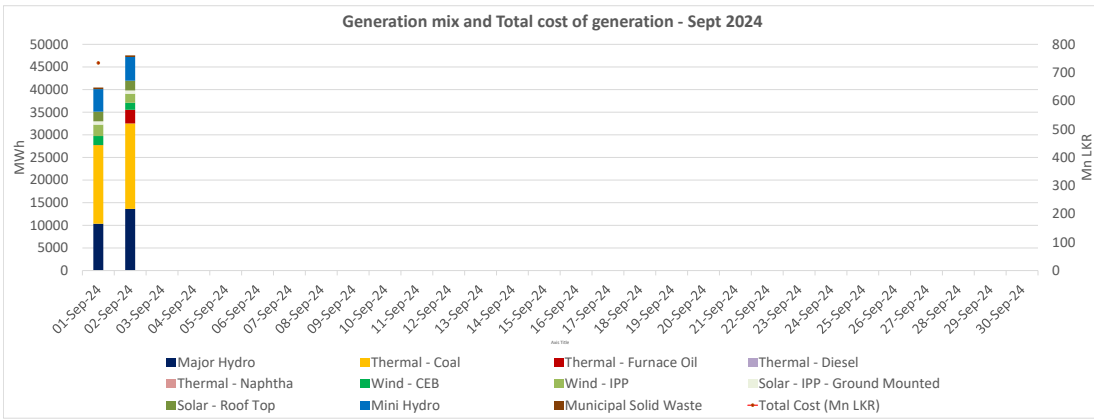
Plant Type	Generation (GWh)	Percentage
Major Hydro	11.7	28%
Thermal - Coal	19.4	46%
Thermal - Furnace Oil	5.4	13%
Thermal - Diesel	0.0	0%
Thermal - Naphtha	0.0	0%
Wind - CEB	2.0	5%
Wind - IPP	0.5	1%
Solar	3.04	7%
Mini Hydro	3.04	7%
Total	42.09	

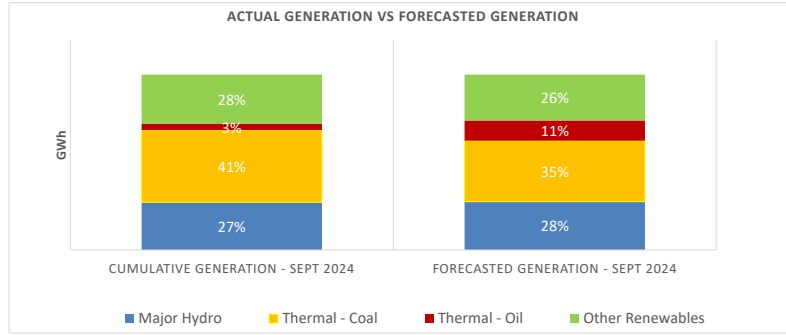
Actual Generation Mix - 2nd Sept 2024 (Excluding generation from non telemetered power plants)

Plant Type	Generation (GWh)	Percentage
Major Hydro	13.6	31%
Thermal - Coal	18.9	43%
Thermal - Furnace Oil	3.0	7%
Thermal - Diesel	0.00	0%
Thermal - Naphtha	0.0	0%
Wind - CEB	1.5	4%
Wind - IPP	2.0	5%
Solar	0.7	2%
Mini Hydro	4.1	9%
Total	43.89	

Estimated Generation Cost for the Scheduled Dispatch (Excluding non telemetered NCRE plants) **882.89 Mn LKR**

Estimated Generation Cost for the Actual Dispatch (Excluding non telemetered NCRE plants) **799.11 Mn LKR**





	Cumulative Generation - Sept 2024 [GWh]	Forecasted Generation - Sept 2024 [GWh]
Major Hydro	24	380
Thermal - Coal	36	479
Thermal - Oil	3	158
Other Renewables	25	360
Total	88	1377

Forecasted Generation - SDDP Aug 2024

Estimated Cost of Generation - Sept 2024 (Mn LKR)

Major Hydro	75.91 Mn LKR
Thermal - Coal	807.91 Mn LKR
Thermal - Furnace Oil	251.83 Mn LKR
Thermal - Diesel	42.95 Mn LKR
Thermal - Naphtha	10.57 Mn LKR
Wind - CEB	43.08 Mn LKR
Wind - IPP	73.20 Mn LKR
Solar - IPP - Ground Mounted	28.24 Mn LKR
Solar - Roof Top	106.65 Mn LKR
Mini Hydro	149.50 Mn LKR
Municipal Solid Waste	28.22 Mn LKR
Total Generation Cost	1,618.04 Mn LKR

Generation Energy Cost (Sept) 1,176.96 Mn LKR

*Generation Capacity Cost (Sept) 357.99 Mn LKR

Other Cost (Sept) 83.08 Mn LKR

Average Unit Cost of Generation (Sept) 18.38 LKR/kWh

Note -

* Capacity cost is based on the approved BST submission.