



# Daily Electricity Generation & Cost Estimation Report

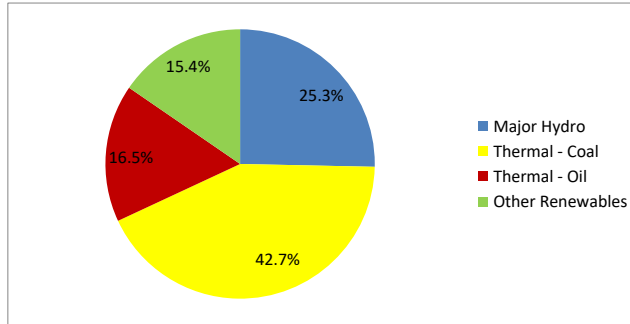
---

28th September 2024



**Daily Generation Mix -28th Sept 2024**

Plant Type	Generation (GWh)	Percentage
Major Hydro	11.48	25.3%
Thermal - Coal	19.36	42.7%
Thermal - Furnace Oil	7.48	16.5%
Thermal - Diesel	0.00	0.0%
Thermal - Naphtha	0.00	0.0%
Wind - CEB	0.24	0.5%
Wind - IPP	0.13	0.3%
Solar - IPP - Ground Mounted	0.63	1.4%
Solar - Roof Top	2.14	4.7%
Mini Hydro	3.55	7.8%
Municipal Solid Waste	0.31	0.7%
<b>Total</b>	<b>45.31</b>	



Note – Estimated generation from roof top solar, non-telemetered solar and mini hydro plants has been included in the above figures

**Estimated Generation Cost : 28th Sept 2024**

Plant Type	Energy Cost (Mn LKR)	Non Fuel Energy Cost (Mn LKR)	Capacity Cost (Mn LKR)	Total Cost of Generation (Mn LKR)	Energy Cost per Unit (LKR/kWh)	Non fuel Energy Cost per Unit (LKR/kWh)	Capacity Charge per Unit (LKR/kWh)	Cost of Electricity per Unit (LKR/kWh)
Major Hydro	0.0	0.0	38.0	38.0	0.00	0.00	3.31	3.31
Thermal - Coal	353.7	28.4	44.5	426.6	18.27	1.47	2.30	22.03
Thermal - Furnace Oil	341.4	9.7	51.7	402.8	45.62	1.30	6.91	53.83
Thermal - Diesel	0.0	1.5	20.0	21.5	0.00	0.00	0.00	0.00
Thermal - Naphtha	0.0	2.0	3.3	5.3	0.00	0.00	0.00	0.00
Wind - CEB	0.0	0.0	21.5	21.5	0.00	0.00	91.27	91.27
Wind - IPP	2.1	0.0	0.0	2.1	16.12	0.00	0.00	16.12
Solar - IPP - Ground Mounted	12.2	0.0	0.0	12.2	19.50	0.00	0.00	19.50
Solar - Roof Top	53.3	0.0	0.0	53.3	24.92	0.00	0.00	24.92
Mini Hydro	51.8	0.0	0.0	51.8	14.61	0.00	0.00	14.61
Municipal Solid Waste	12.2	0.0	0.0	12.2	39.30	0.00	0.00	39.30
<b>Total</b>	<b>826.7</b>	<b>41.5</b>	<b>179.0</b>	<b>1047.2</b>	<b>18.25</b>	<b>0.92</b>	<b>3.95</b>	<b>23.11</b>

Note -

Start/Stop costs has been excluded in the calculation

Capacity cost is based on the approved BST submission.

Unit Cost of Generation for the day : **23.11 LKR/kWh**  
 Total Generation Cost for the day: **1047.24 Mn LKR**

**Fuel Prices**

( as at 27th Sept 2024)

	Price (LKR/Liter or LKR/kg)
Furnace	191.00
Coal	44.50
Naphtha	197.06
Auto Diesel	307.00

**Scheduled (Day Ahead) Generation Mix - 28th Sept 2024 (Excluding generation from non telemetered power plants)**

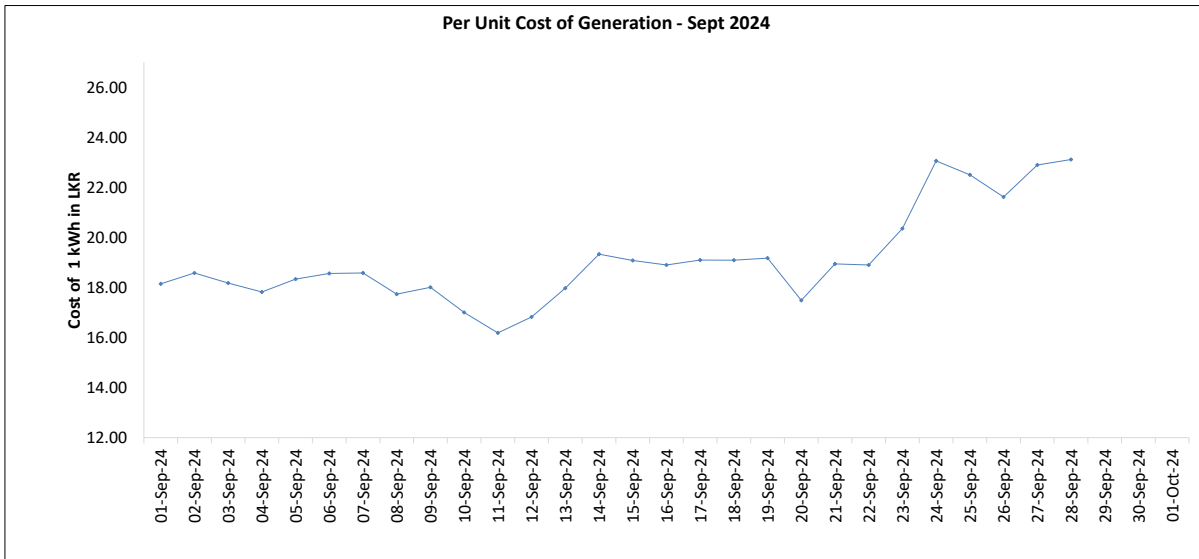
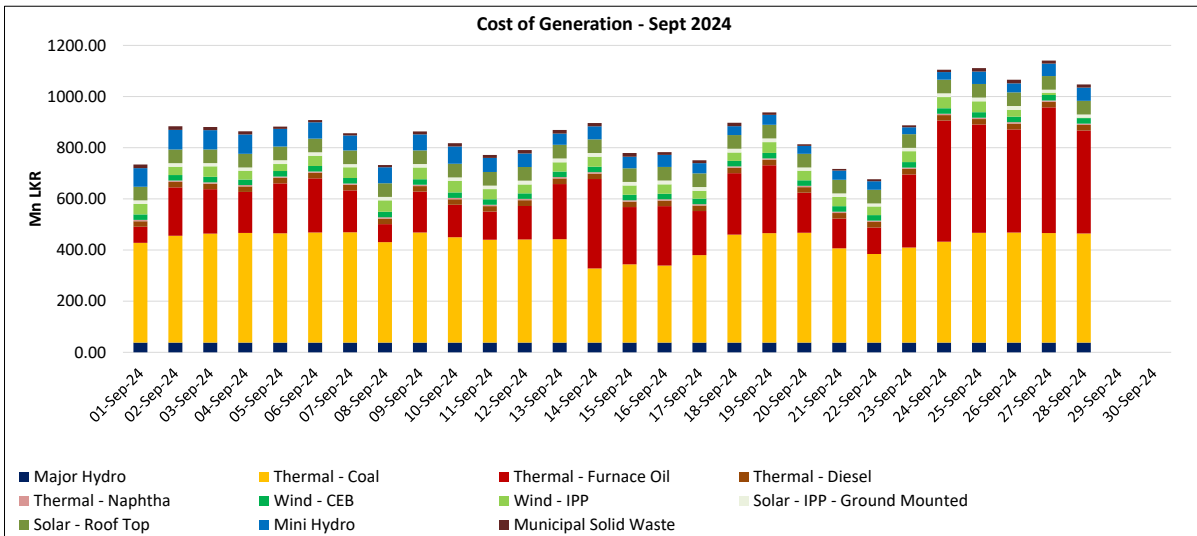
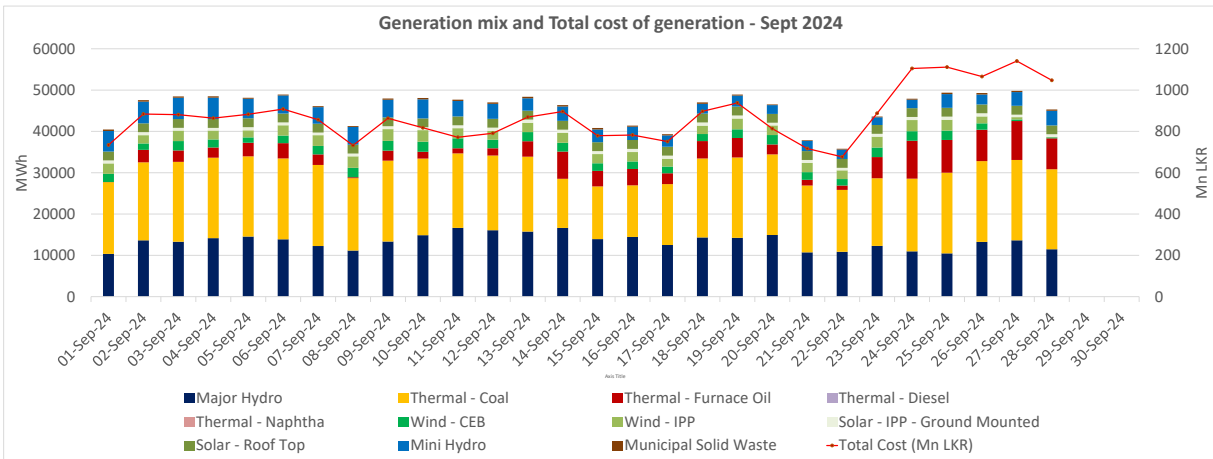
Plant Type	Generation (GWh)	Percentage
Major Hydro	11.1	25%
Thermal - Coal	19.4	44%
Thermal - Furnace Oil	10.9	24%
Thermal - Diesel	0.0	0%
Thermal - Naphtha	0.0	0%
Wind - CEB		
Wind - IPP	0.3	1%
Solar	0.6	1%
Mini Hydro	2.28	5%
<b>Total</b>	<b>44.49</b>	

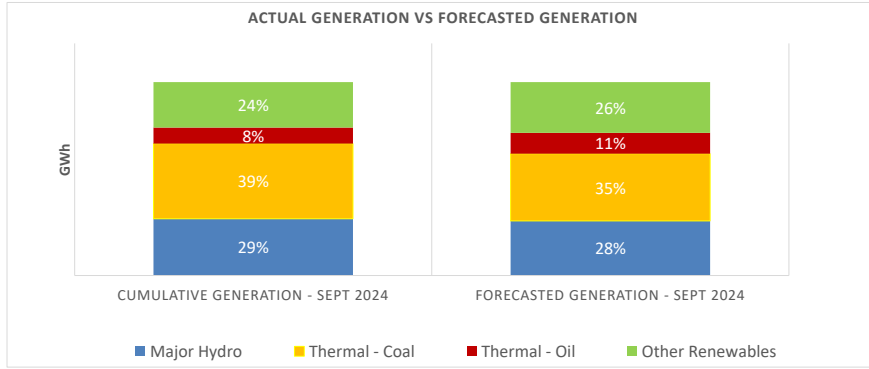
Estimated Generation Cost for the Scheduled Dispatch (Excluding non telemetered NCRE plants) **1115.38 Mn LKR**

**Actual Generation Mix - 28th Sept 2024 (Excluding generation from non telemetered power plants)**

Plant Type	Generation (GWh)	Percentage
Major Hydro	11.5	27%
Thermal - Coal	19.4	46%
Thermal - Furnace Oil	7.5	18%
Thermal - Diesel	0.00	0%
Thermal - Naphtha	0.0	0%
Wind - CEB	0.2	1%
Wind - IPP	0.1	0%
Solar	0.6	1%
Mini Hydro	2.8	7%
<b>Total</b>	<b>42.09</b>	

Estimated Generation Cost for the Actual Dispatch (Excluding non telemetered NCRE plants) **970.47 Mn LKR**





	Cumulative Generation - Sept 2024 [GWh]	Forecasted Generation - Sept 2024 [GWh]
Major Hydro	375	389
Thermal - Coal	497	479
Thermal - Oil	106	148
Other Renewables	300	362
<b>Total</b>	<b>1278</b>	<b>1377</b>

Forecasted Generation - SDDP Sept 2024

**Estimated Cost of Generation - Sept 2024 ( Mn LKR)**

Major Hydro	1062.67 Mn LKR
Thermal - Coal	11111.31 Mn LKR
Thermal - Furnace Oil	6311.00 Mn LKR
Thermal - Diesel	604.41 Mn LKR
Thermal - Naphtha	147.91 Mn LKR
Wind - CEB	603.09 Mn LKR
Wind - IPP	996.09 Mn LKR
Solar - IPP - Ground Mounted	386.92 Mn LKR
Solar - Roof Top	1493.07 Mn LKR
Mini Hydro	1434.66 Mn LKR
Municipal Solid Waste	313.00 Mn LKR
<b>Total Generation Cost</b>	<b>24,464.12 Mn LKR</b>

Generation Energy Cost (Sept) 18,289.10 Mn LKR

\*Generation Capacity Cost (Sept) 5,011.88 Mn LKR

Other Cost (Sept) 1,163.15 Mn LKR

Average Unit Cost of Generation (Sept) 19.14 LKR/kWh

Note -

\* Capacity cost is based on the approved BST submission.