



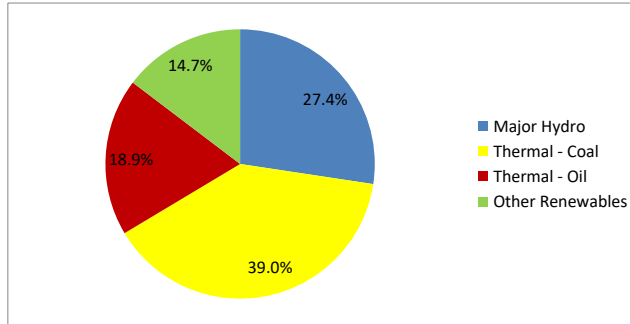
Daily Electricity Generation & Cost Estimation Report

27th September 2024



Daily Generation Mix -27th Sept 2024

Plant Type	Generation (GWh)	Percentage
Major Hydro	13.64	27.4%
Thermal - Coal	19.44	39.0%
Thermal - Furnace Oil	9.42	18.9%
Thermal - Diesel	0.00	0.0%
Thermal - Naphtha	0.00	0.0%
Wind - CEB	0.38	0.8%
Wind - IPP	0.56	1.1%
Solar - IPP - Ground Mounted	0.61	1.2%
Solar - Roof Top	2.14	4.3%
Mini Hydro	3.32	6.7%
Municipal Solid Waste	0.30	0.6%
Total	49.82	



Note – Estimated generation from roof top solar, non-telemetered solar and mini hydro plants has been included in the above figures

Estimated Generation Cost : 27th Sept 2024

Plant Type	Energy Cost (Mn LKR)	Non Fuel Energy Cost (Mn LKR)	Capacity Cost (Mn LKR)	Total Cost of Generation (Mn LKR)	Energy Cost per Unit (LKR/kWh)	Non fuel Energy Cost per Unit (LKR/kWh)	Capacity Charge per Unit (LKR/kWh)	Cost of Electricity per Unit (LKR/kWh)
Major Hydro	0.0	0.0	38.0	38.0	0.00	0.00	2.78	2.78
Thermal - Coal	355.2	28.4	44.5	428.1	18.27	1.46	2.29	22.02
Thermal - Furnace Oil	430.2	9.7	51.7	491.6	45.66	1.03	5.49	52.18
Thermal - Diesel	0.0	1.5	20.0	21.5	0.00	0.00	0.00	0.00
Thermal - Naphtha	0.0	2.0	3.3	5.3	0.00	0.00	0.00	0.00
Wind - CEB	0.0	0.0	21.5	21.5	0.00	0.00	56.68	56.68
Wind - IPP	9.0	0.0	0.0	9.0	16.12	0.00	0.00	16.12
Solar - IPP - Ground Mounted	11.9	0.0	0.0	11.9	19.50	0.00	0.00	19.50
Solar - Roof Top	53.3	0.0	0.0	53.3	24.92	0.00	0.00	24.92
Mini Hydro	48.5	0.0	0.0	48.5	14.61	0.00	0.00	14.61
Municipal Solid Waste	11.9	0.0	0.0	11.9	39.30	0.00	0.00	39.30
Total	920.1	41.5	179.0	1140.6	18.47	0.83	3.59	22.89

Note -

Start/Stop costs has been excluded in the calculation

Capacity cost is based on the approved BST submission.

Unit Cost of Generation for the day : **22.89 LKR/kWh**
 Total Generation Cost for the day: **1140.60 Mn LKR**

Fuel Prices

(as at 27th Sept 2024)

	Price (LKR/Liter or LKR/kg)
Furnace	191.00
Coal	44.50
Naphtha	197.06
Auto Diesel	307.00

Scheduled (Day Ahead) Generation Mix - 27th Sept 2024 (Excluding generation from non telemetered power plants)

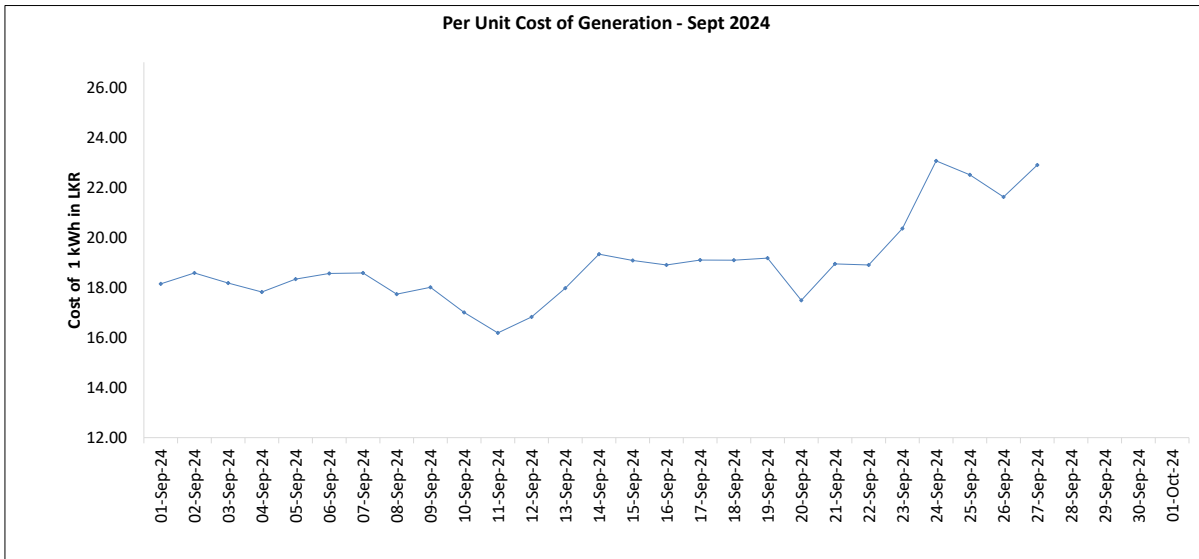
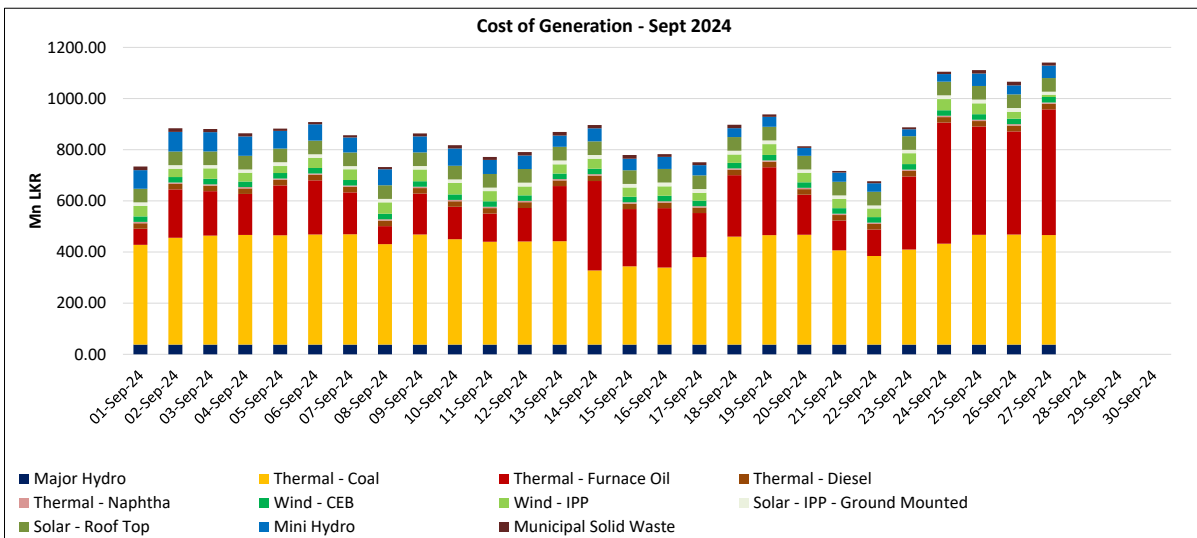
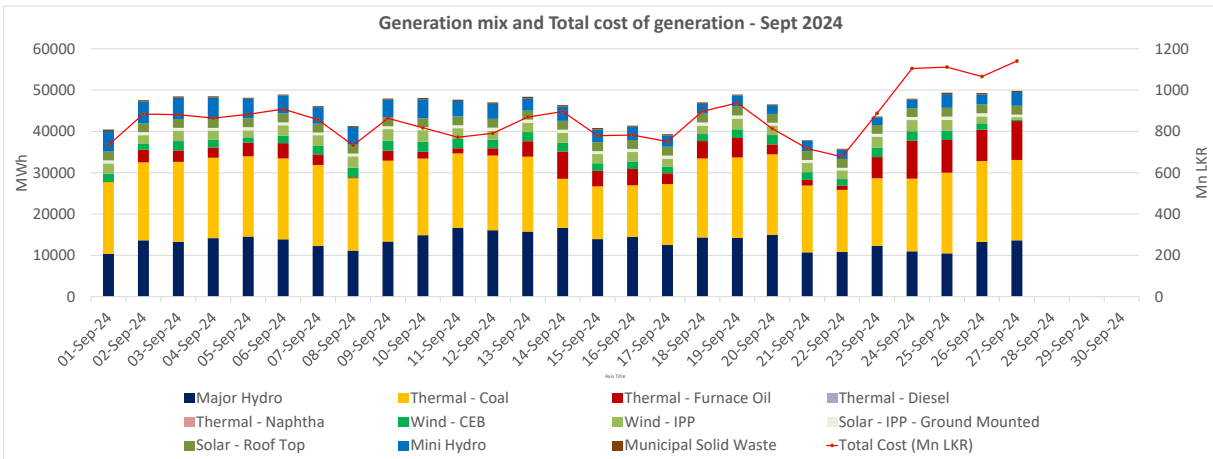
Plant Type	Generation (GWh)	Percentage
Major Hydro	11.1	24%
Thermal - Coal	19.4	42%
Thermal - Furnace Oil	9.5	21%
Thermal - Diesel	0.0	0%
Thermal - Naphtha	0.0	0%
Wind - CEB		
Wind - IPP	2.9	6%
Solar	0.6	1%
Mini Hydro	2.52	5%
Total	46.09	

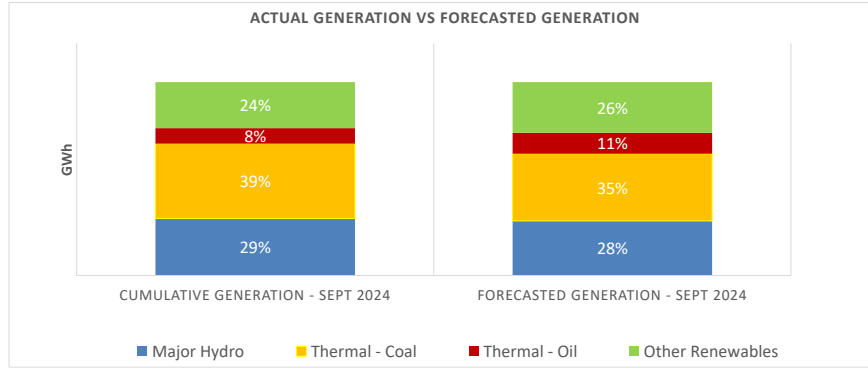
Estimated Generation Cost for the Scheduled Dispatch (Excluding non telemetered NCRE plants) **1077.15 Mn LKR**

Actual Generation Mix - 27th Sept 2024 (Excluding generation from non telemetered power plants)

Plant Type	Generation (GWh)	Percentage
Major Hydro	13.6	29%
Thermal - Coal	19.4	41%
Thermal - Furnace Oil	9.4	20%
Thermal - Diesel	0.00	0%
Thermal - Naphtha	0.0	0%
Wind - CEB	0.4	1%
Wind - IPP	0.6	1%
Solar	0.6	1%
Mini Hydro	3.1	7%
Total	47.19	

Estimated Generation Cost for the Actual Dispatch (Excluding non telemetered NCRE plants) **1072.54 Mn LKR**





	Cumulative Generation - Sept 2024 [GWh]	Forecasted Generation - Sept 2024 [GWh]
Major Hydro	363	389
Thermal - Coal	477	479
Thermal - Oil	99	148
Other Renewables	293	362
Total	1233	1377

Forecasted Generation - SDDP Sept 2024

Estimated Cost of Generation - Sept 2024 (Mn LKR)

Major Hydro	1024.72 Mn LKR
Thermal - Coal	10684.72 Mn LKR
Thermal - Furnace Oil	5908.23 Mn LKR
Thermal - Diesel	582.93 Mn LKR
Thermal - Naphtha	142.63 Mn LKR
Wind - CEB	581.55 Mn LKR
Wind - IPP	993.99 Mn LKR
Solar - IPP - Ground Mounted	374.73 Mn LKR
Solar - Roof Top	1439.74 Mn LKR
Mini Hydro	1382.85 Mn LKR
Municipal Solid Waste	300.78 Mn LKR
Total Generation Cost	23,416.88 Mn LKR

Generation Energy Cost (Sept) 17,462.39 Mn LKR

*Generation Capacity Cost (Sept) 4,832.88 Mn LKR

Other Cost (Sept) 1,121.61 Mn LKR

Average Unit Cost of Generation (Sept) 19.00 LKR/kWh

Note -

* Capacity cost is based on the approved BST submission.