



# Daily Electricity Generation & Cost Estimation Report

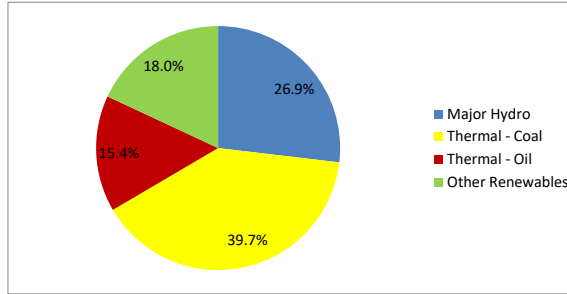
---

26th September 2024



**Daily Generation Mix -26th Sept 2024**

Plant Type	Generation (GWh)	Percentage
Major Hydro	13.25	26.9%
Thermal - Coal	19.56	39.7%
Thermal - Furnace Oil	7.58	15.4%
Thermal - Diesel	0.02	0.0%
Thermal - Naphtha	0.00	0.0%
Wind - CEB	1.55	3.1%
Wind - IPP	1.68	3.4%
Solar - IPP - Ground Mounted	0.76	1.5%
Solar - Roof Top	2.14	4.3%
Mini Hydro	2.41	4.9%
Municipal Solid Waste	0.36	0.7%
<b>Total</b>	<b>49.30</b>	



Note - Estimated generation from roof top solar, non-telemetered solar and mini hydro plants has been included in the above figures

**Estimated Generation Cost : 26th Sept 2024**

Plant Type	Energy Cost (Mn LKR )	Non Fuel Energy Cost (Mn LKR )	Capacity Cost (Mn LKR )	Total Cost of Generation (Mn LKR )	Energy Cost per Unit (LKR/kWh )	Non fuel Energy Cost per Unit (LKR/kWh)	Capacity Charge per Unit (LKR/kWh)	Cost of Electricity per Unit (LKR/kWh)
Major Hydro	0.0	0.0	38.0	38.0	0.00	0.00	2.86	2.86
Thermal - Coal	357.3	28.4	44.5	430.2	18.27	1.45	2.28	22.00
Thermal - Furnace Oil	341.9	9.7	51.7	403.3	45.13	1.28	6.83	53.24
Thermal - Diesel	1.4	1.5	20.0	22.9	79.85	83.36	1109.68	1272.88
Thermal - Naphtha	0.0	2.0	3.3	5.3	0.00	0.00	0.00	0.00
Wind - CEB	0.0	0.0	21.5	21.5	0.00	0.00	13.88	13.88
Wind - IPP	27.0	0.0	0.0	27.0	16.12	0.00	0.00	16.12
Solar - IPP - Ground Mounted	14.8	0.0	0.0	14.8	19.50	0.00	0.00	19.50
Solar - Roof Top	53.3	0.0	0.0	53.3	24.92	0.00	0.00	24.92
Mini Hydro	35.3	0.0	0.0	35.3	14.61	0.00	0.00	14.61
Municipal Solid Waste	14.1	0.0	0.0	14.1	39.30	0.00	0.00	39.30
<b>Total</b>	<b>845.2</b>	<b>41.5</b>	<b>179.0</b>	<b>1065.7</b>	<b>17.14</b>	<b>0.84</b>	<b>3.63</b>	<b>21.62</b>

Note -

Start/Stop costs has been excluded in the calculation

Capacity cost is based on the approved BST submission.

Unit Cost of Generation for the day : **21.62 LKR/kWh**  
 Total Generation Cost for the day: **1065.74 Mn LKR**

**Fuel Prices**

( as at 27th Sept 2024)

	Price (LKR/Liter or LKR/kg)
Furnace	191.00
Coal	44.50
Naphtha	197.06
Auto Diesel	307.00

**Scheduled (Day Ahead) Generation Mix - 26th Sept 2024 (Excluding generation from non telemetered power plants)**

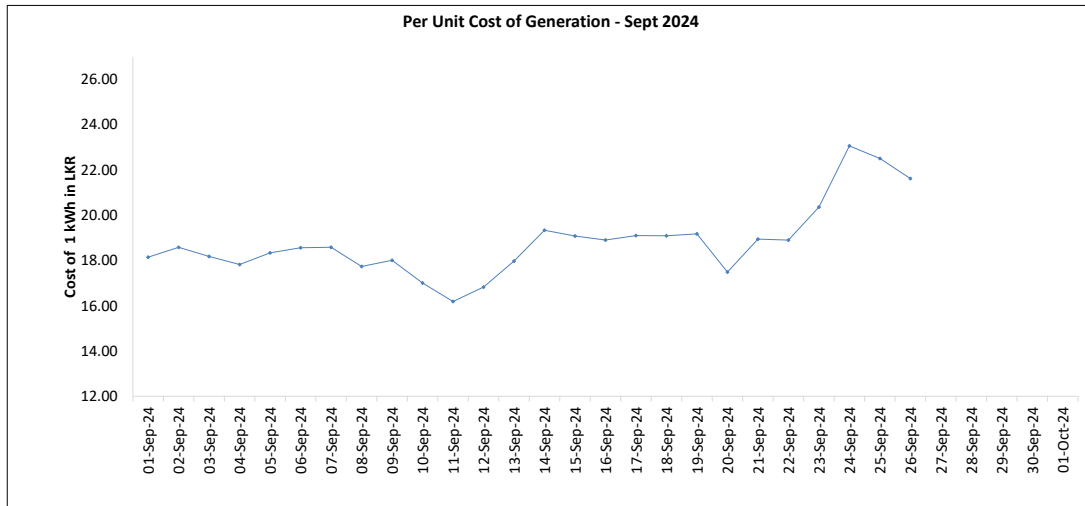
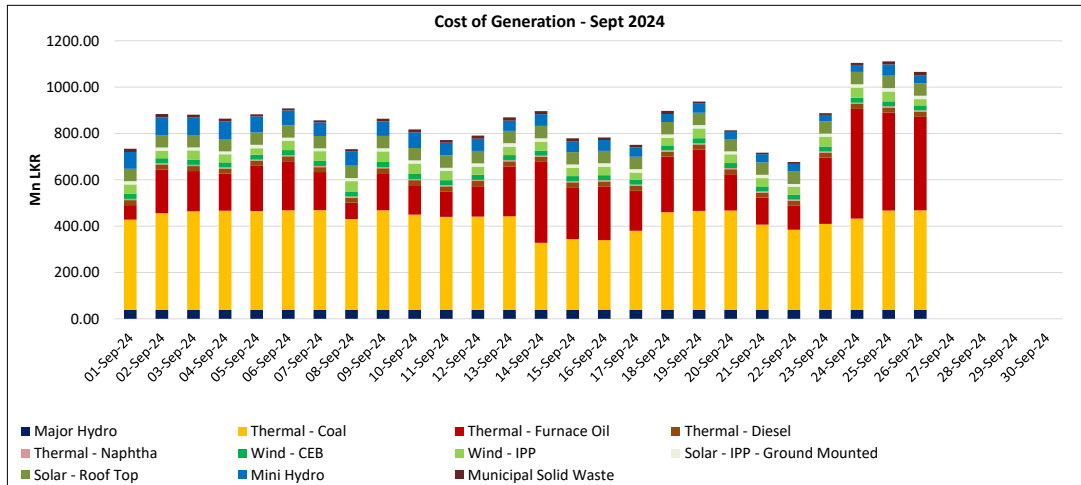
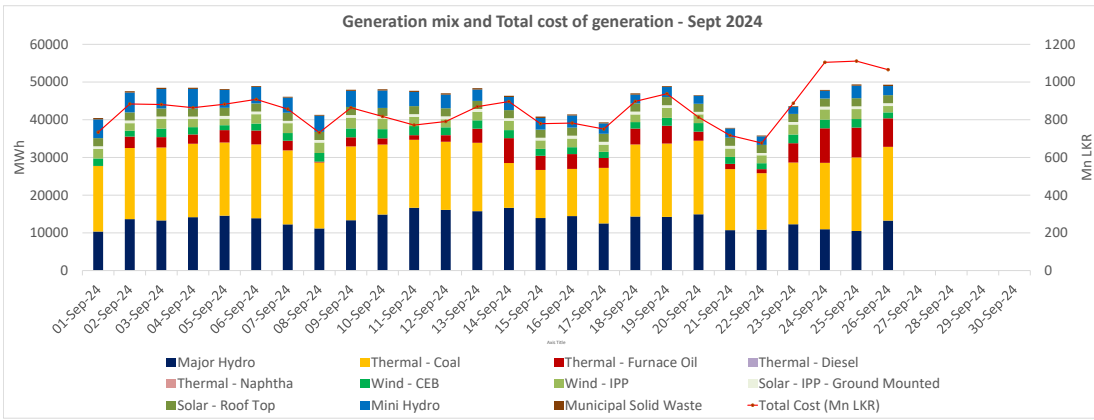
Plant Type	Generation (GWh)	Percentage
Major Hydro	11.3	25%
Thermal - Coal	19.4	43%
Thermal - Furnace Oil	7.3	16%
Thermal - Diesel	0.0	0%
Thermal - Naphtha	0.0	0%
Wind - CEB	5.0	11%
Wind - IPP		
Solar	0.6	1%
Mini Hydro	1.93	4%
<b>Total</b>	<b>45.53</b>	

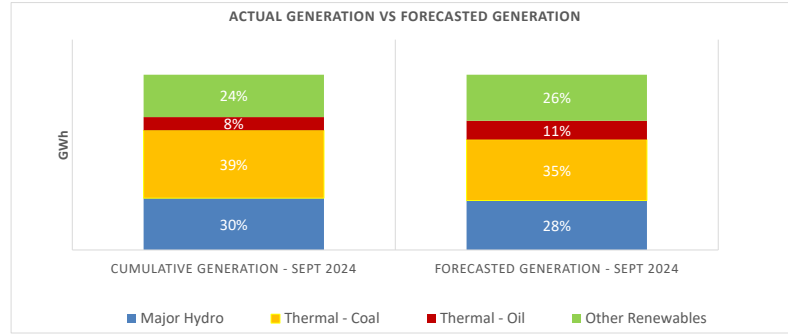
**Actual Generation Mix - 26th Sept 2024 (Excluding generation from non telemetered power plants)**

Plant Type	Generation (GWh)	Percentage
Major Hydro	13.2	28%
Thermal - Coal	19.6	42%
Thermal - Furnace Oil	7.6	16%
Thermal - Diesel	0.02	0%
Thermal - Naphtha	0.0	0%
Wind - CEB	1.6	3%
Wind - IPP	1.7	4%
Solar	0.8	2%
Mini Hydro	2.3	5%
<b>Total</b>	<b>46.66</b>	

Estimated Generation Cost for the Scheduled Dispatch (Excluding non telemetered NCRE plants) **984.08 Mn LKR**

Estimated Generation Cost for the Actual Dispatch (Excluding non telemetered NCRE plants) **996.27 Mn LKR**





	Cumulative Generation - Sept 2024 [GWh]	Forecasted Generation - Sept 2024 [GWh]
Major Hydro	350	389
Thermal - Coal	458	479
Thermal - Oil	89	148
Other Renewables	286	362
<b>Total</b>	<b>1183</b>	<b>1377</b>

Forecasted Generation - SDDP Sept 2024

**Estimated Cost of Generation - Sept 2024 ( Mn LKR)**

Major Hydro	986.77 Mn LKR
Thermal - Coal	10256.64 Mn LKR
Thermal - Furnace Oil	5416.60 Mn LKR
Thermal - Diesel	561.46 Mn LKR
Thermal - Naphtha	137.35 Mn LKR
Wind - CEB	560.01 Mn LKR
Wind - IPP	984.96 Mn LKR
Solar - IPP - Ground Mounted	362.88 Mn LKR
Solar - Roof Top	1386.42 Mn LKR
Mini Hydro	1334.38 Mn LKR
Municipal Solid Waste	288.83 Mn LKR
<b>Total Generation Cost</b>	<b>22,276.28 Mn LKR</b>

Generation Energy Cost (Sept)	16,542.33 Mn LKR
*Generation Capacity Cost (Sept)	4,653.88 Mn LKR
Other Cost (Sept)	1,080.06 Mn LKR

**Average Unit Cost of Generation (Sept) 18.83 LKR/kWh**

Note -

\* Capacity cost is based on the approved BST submission.