



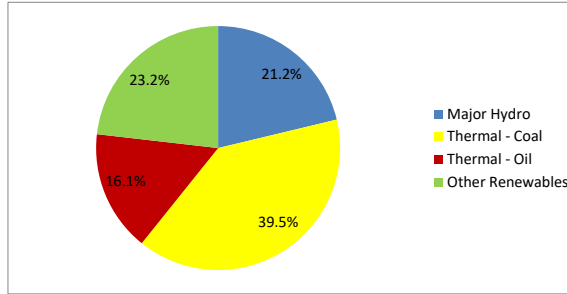
Daily Electricity Generation & Cost Estimation Report

25th September 2024



Daily Generation Mix -25th Sept 2024

Plant Type	Generation (GWh)	Percentage
Major Hydro	10.49	21.2%
Thermal - Coal	19.51	39.5%
Thermal - Furnace Oil	7.93	16.1%
Thermal - Diesel	0.00	0.0%
Thermal - Naphtha	0.00	0.0%
Wind - CEB	2.26	4.6%
Wind - IPP	2.63	5.3%
Solar - IPP - Ground Mounted	0.75	1.5%
Solar - Roof Top	2.14	4.3%
Mini Hydro	3.32	6.7%
Municipal Solid Waste	0.34	0.7%
Total	49.38	



Note - Estimated generation from roof top solar, non-telemetered solar and mini hydro plants has been included in the above figures

Estimated Generation Cost : 25th Sept 2024

Plant Type	Energy Cost (Mn LKR)	Non Fuel Energy Cost (Mn LKR)	Capacity Cost (Mn LKR)	Total Cost of Generation (Mn LKR)	Energy Cost per Unit (LKR/kWh)	Non fuel Energy Cost per Unit (LKR/kWh)	Capacity Charge per Unit (LKR/kWh)	Cost of Electricity per Unit (LKR/kWh)
Major Hydro	0.0	0.0	38.0	38.0	0.00	0.00	3.62	3.62
Thermal - Coal	356.4	28.4	44.5	429.3	18.27	1.45	2.28	22.00
Thermal - Furnace Oil	361.9	9.7	51.7	423.3	45.66	1.22	6.52	53.40
Thermal - Diesel	0.0	1.5	20.0	21.5	0.00	0.00	0.00	0.00
Thermal - Naphtha	0.0	2.0	3.3	5.3	0.00	0.00	0.00	0.00
Wind - CEB	0.0	0.0	21.5	21.5	0.00	0.00	9.51	9.51
Wind - IPP	42.4	0.0	0.0	42.4	16.12	0.00	0.00	16.12
Solar - IPP - Ground Mounted	14.7	0.0	0.0	14.7	19.50	0.00	0.00	19.50
Solar - Roof Top	53.3	0.0	0.0	53.3	24.92	0.00	0.00	24.92
Mini Hydro	48.5	0.0	0.0	48.5	14.61	0.00	0.00	14.61
Municipal Solid Waste	13.3	0.0	0.0	13.3	39.30	0.00	0.00	39.30
Total	890.6	41.5	179.0	1111.1	18.04	0.84	3.63	22.50

Note -

Start/Stop costs has been excluded in the calculation

Capacity cost is based on the approved BST submission.

Unit Cost of Generation for the day : **22.50 LKR/kWh**
 Total Generation Cost for the day: **1111.09 Mn LKR**

Fuel Prices

(as at 1st Sept 2024)

	Price (LKR/Liter or LKR/kg)
Furnace	181.00
Coal	44.50
Naphtha	197.06
Auto Diesel	307.00

Scheduled (Day Ahead) Generation Mix - 25th Sept 2024 (Excluding generation from non telemetered power plants)

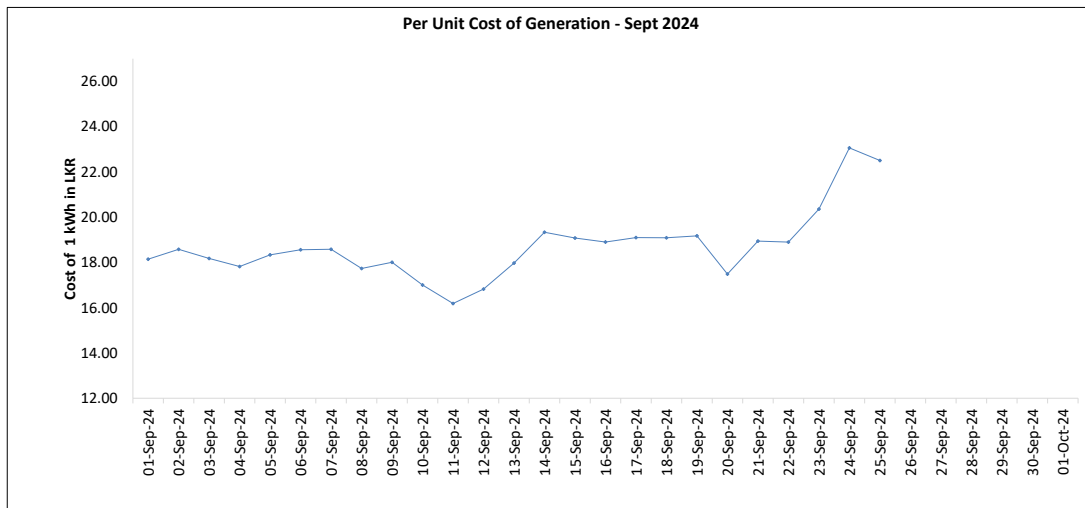
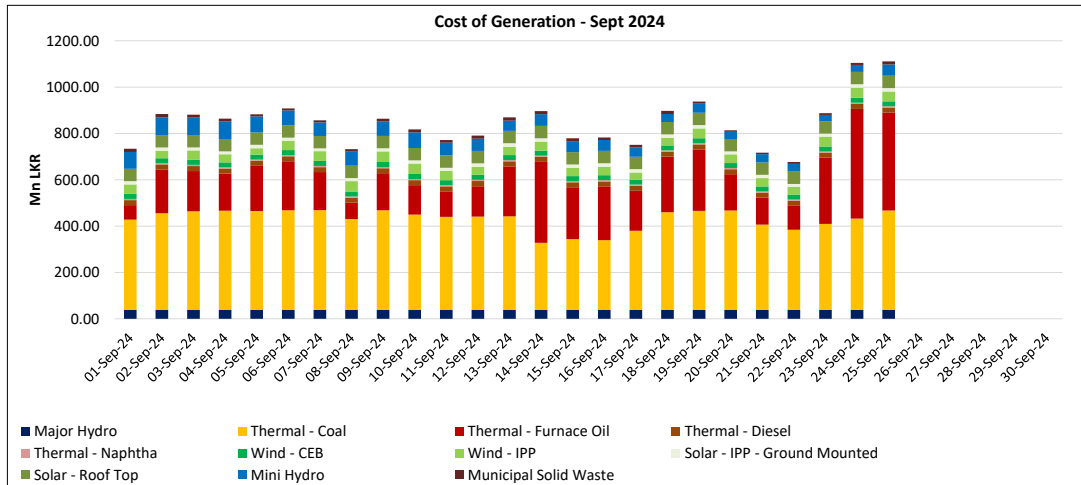
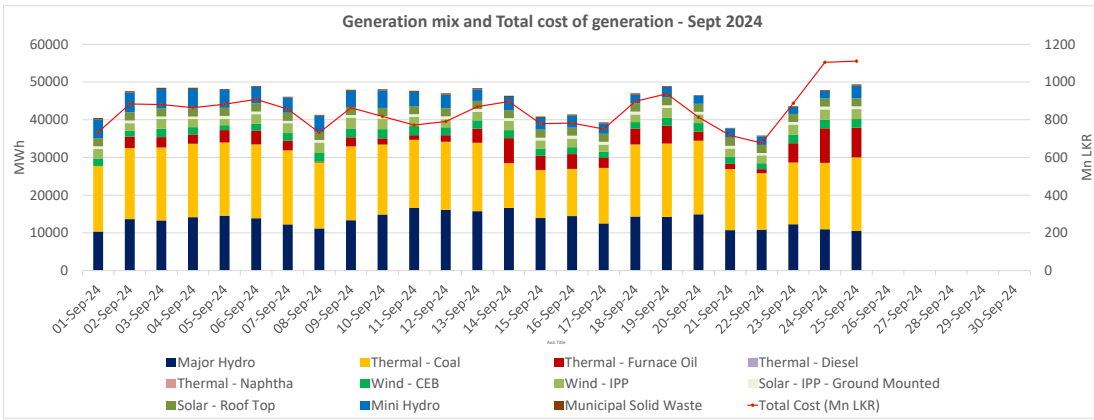
Plant Type	Generation (GWh)	Percentage
Major Hydro	11.9	26%
Thermal - Coal	19.4	43%
Thermal - Furnace Oil	7.6	17%
Thermal - Diesel	0.0	0%
Thermal - Naphtha	0.0	0%
Wind - CEB	4.4	10%
Wind - IPP		
Solar	0.5	1%
Mini Hydro	1.75	4%
Total	45.59	

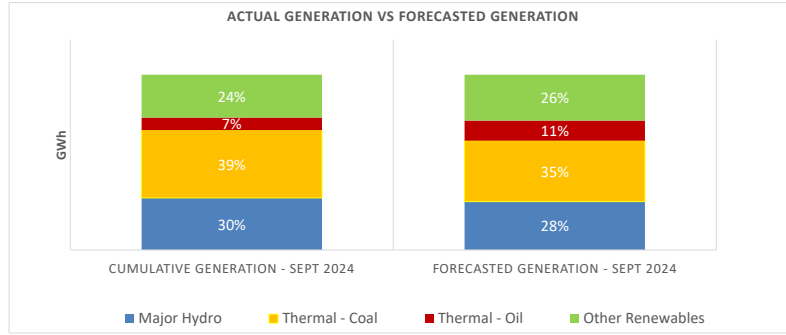
Actual Generation Mix - 25th Sept 2024 (Excluding generation from non telemetered power plants)

Plant Type	Generation (GWh)	Percentage
Major Hydro	10.5	23%
Thermal - Coal	19.5	42%
Thermal - Furnace Oil	7.9	17%
Thermal - Diesel	0.00	0%
Thermal - Naphtha	0.0	0%
Wind - CEB	2.3	5%
Wind - IPP	2.6	6%
Solar	0.8	2%
Mini Hydro	2.5	5%
Total	46.10	

Estimated Generation Cost for the Scheduled Dispatch (Excluding non telemetered NCRE plants) **998.25 Mn LKR**

Estimated Generation Cost for the Actual Dispatch (Excluding non telemetered NCRE plants) **1032.72 Mn LKR**





	Cumulative Generation - Sept 2024 [GWh]	Forecasted Generation - Sept 2024 [GWh]
Major Hydro	336	380
Thermal - Coal	438	479
Thermal - Oil	82	158
Other Renewables	277	360
Total	1133	1377

Forecasted Generation - SDDP Aug 2024

Estimated Cost of Generation - Sept 2024 (Mn LKR)

Major Hydro	948.81 Mn LKR
Thermal - Coal	9826.41 Mn LKR
Thermal - Furnace Oil	5013.25 Mn LKR
Thermal - Diesel	538.55 Mn LKR
Thermal - Naptha	132.06 Mn LKR
Wind - CEB	538.47 Mn LKR
Wind - IPP	957.95 Mn LKR
Solar - IPP - Ground Mounted	348.09 Mn LKR
Solar - Roof Top	1333.10 Mn LKR
Mini Hydro	1299.12 Mn LKR
Municipal Solid Waste	274.73 Mn LKR
Total Generation Cost	21,210.54 Mn LKR

Generation Energy Cost (Sept) 15,697.13 Mn LKR

*Generation Capacity Cost (Sept) 4,474.89 Mn LKR

Other Cost (Sept) 1,038.52 Mn LKR

Average Unit Cost of Generation (Sept) 18.71 LKR/kWh

Note -

* Capacity cost is based on the approved BST submission.