



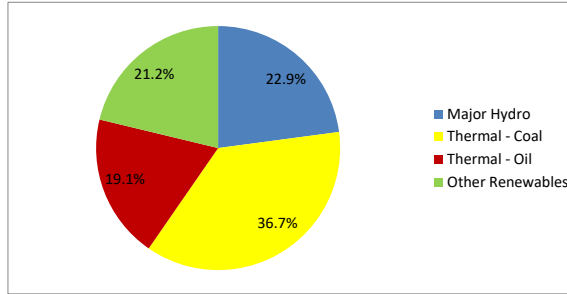
Daily Electricity Generation & Cost Estimation Report

24th September 2024



Daily Generation Mix -24th Sept 2024

Plant Type	Generation (GWh)	Percentage
Major Hydro	10.97	22.9%
Thermal - Coal	17.60	36.7%
Thermal - Furnace Oil	9.17	19.1%
Thermal - Diesel	0.00	0.0%
Thermal - Naphtha	0.00	0.0%
Wind - CEB	2.31	4.8%
Wind - IPP	2.70	5.6%
Solar - IPP - Ground Mounted	0.75	1.6%
Solar - Roof Top	2.14	4.5%
Mini Hydro	2.04	4.3%
Municipal Solid Waste	0.23	0.5%
Total	47.91	



Note - Estimated generation from roof top solar, non-telemetered solar and mini hydro plants has been included in the above figures

Estimated Generation Cost : 24th Sept 2024

Plant Type	Energy Cost (Mn LKR)	Non Fuel Energy Cost (Mn LKR)	Capacity Cost (Mn LKR)	Total Cost of Generation (Mn LKR)	Energy Cost per Unit (LKR/kWh)	Non fuel Energy Cost per Unit (LKR/kWh)	Capacity Charge per Unit (LKR/kWh)	Cost of Electricity per Unit (LKR/kWh)
Major Hydro	0.0	0.0	38.0	38.0	0.00	0.00	3.46	3.46
Thermal - Coal	321.6	28.4	44.5	394.5	18.27	1.61	2.53	22.41
Thermal - Furnace Oil	412.2	9.7	51.7	473.6	44.98	1.06	5.64	51.68
Thermal - Diesel	0.0	1.5	20.0	21.5	0.00	0.00	0.00	0.00
Thermal - Naphtha	0.0	2.0	3.3	5.3	0.00	0.00	0.00	0.00
Wind - CEB	0.0	0.0	21.5	21.5	0.00	0.00	9.32	9.32
Wind - IPP	43.5	0.0	0.0	43.5	16.12	0.00	0.00	16.12
Solar - IPP - Ground Mounted	14.6	0.0	0.0	14.6	19.50	0.00	0.00	19.50
Solar - Roof Top	53.3	0.0	0.0	53.3	24.92	0.00	0.00	24.92
Mini Hydro	29.8	0.0	0.0	29.8	14.61	0.00	0.00	14.61
Municipal Solid Waste	9.0	0.0	0.0	9.0	39.30	0.00	0.00	39.30
Total	884.2	41.5	179.0	1104.7	18.46	0.87	3.74	23.06

Note -

Start/Stop costs has been excluded in the calculation

Capacity cost is based on the approved BST submission.

Unit Cost of Generation for the day : **23.06 LKR/kWh**
 Total Generation Cost for the day: **1104.75 Mn LKR**

Fuel Prices

(as at 1st Sept 2024)

	Price (LKR/Liter or LKR/kg)
Furnace	181.00
Coal	44.50
Naphtha	197.06
Auto Diesel	307.00

Scheduled (Day Ahead) Generation Mix - 24th Sept 2024 (Excluding generation from non telemetered power plants)

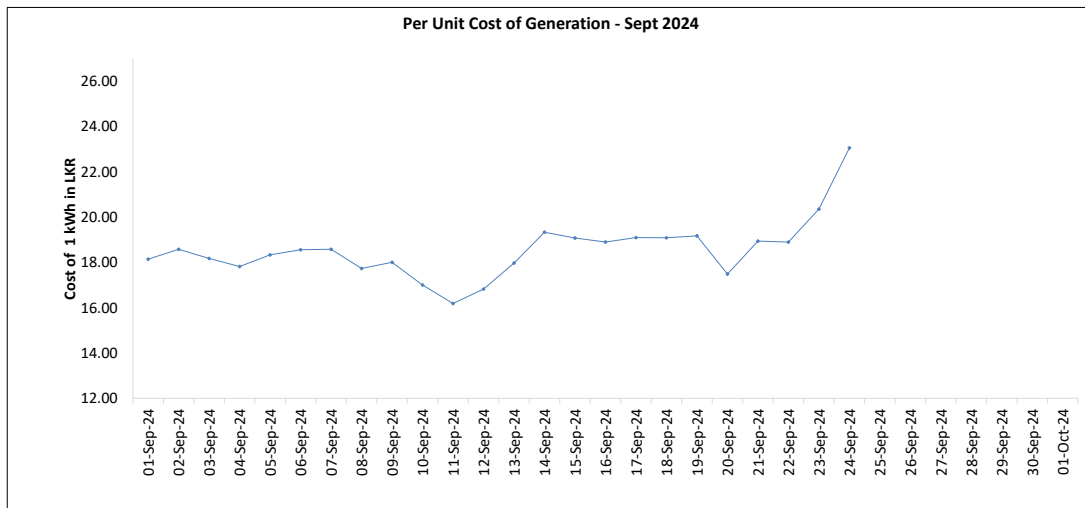
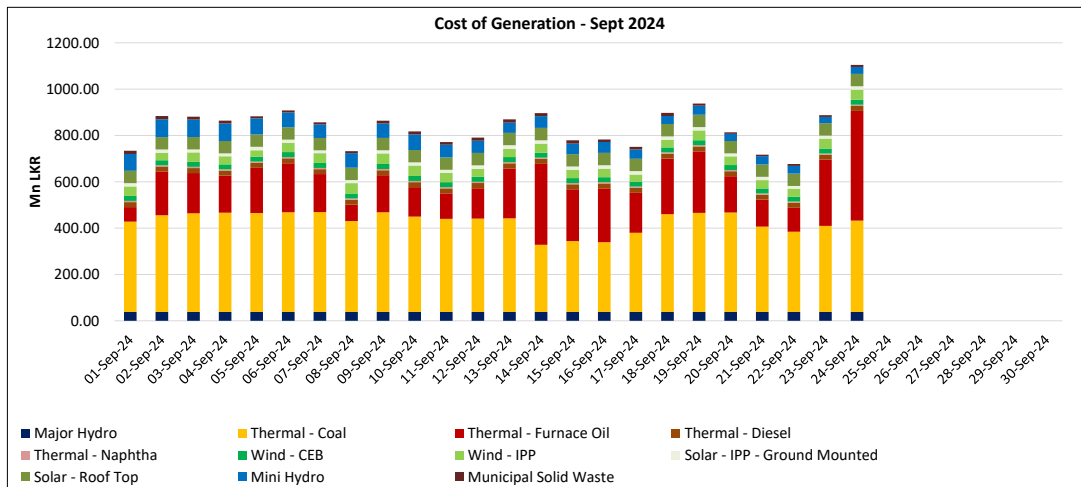
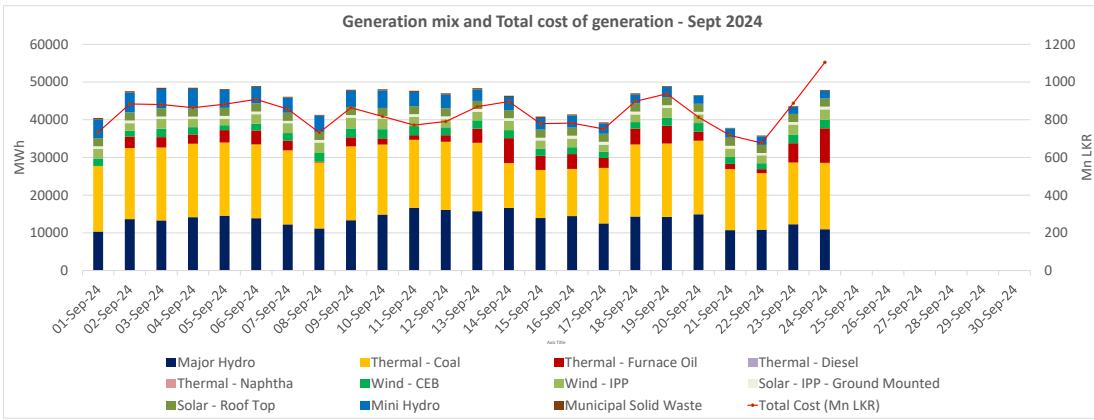
Plant Type	Generation (GWh)	Percentage
Major Hydro	12.5	28%
Thermal - Coal	16.1	36%
Thermal - Furnace Oil	9.7	22%
Thermal - Diesel	0.0	0%
Thermal - Naphtha	0.0	0%
Wind - CEB	3.6	8%
Wind - IPP		
Solar	0.4	1%
Mini Hydro	1.79	4%
Total	44.16	

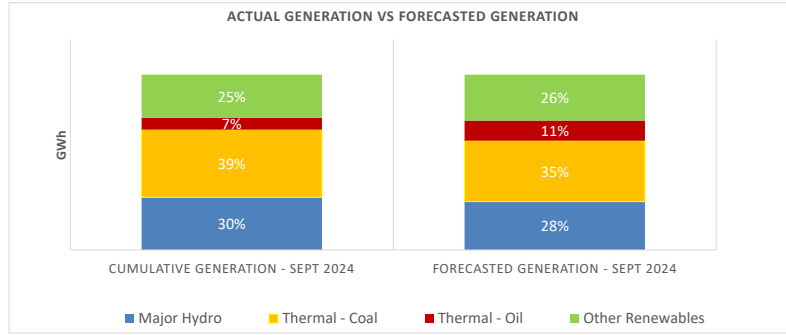
Actual Generation Mix - 24th Sept 2024 (Excluding generation from non telemetered power plants)

Plant Type	Generation (GWh)	Percentage
Major Hydro	11.0	24%
Thermal - Coal	17.6	39%
Thermal - Furnace Oil	9.2	20%
Thermal - Diesel	0.00	0%
Thermal - Naphtha	0.0	0%
Wind - CEB	2.3	5%
Wind - IPP	2.7	6%
Solar	0.8	2%
Mini Hydro	1.9	4%
Total	45.42	

Estimated Generation Cost for the Scheduled Dispatch (Excluding non telemetered NCRE plants) **1014.65 Mn LKR**

Estimated Generation Cost for the Actual Dispatch (Excluding non telemetered NCRE plants) **1040.65 Mn LKR**





	Cumulative Generation - Sept 2024 [GWh]	Forecasted Generation - Sept 2024 [GWh]
Major Hydro	326	380
Thermal - Coal	419	479
Thermal - Oil	74	158
Other Renewables	266	360
Total	1084	1377

Forecasted Generation - SDDP Aug 2024

Estimated Cost of Generation - Sept 2024 (Mn LKR)

Major Hydro	910.86 Mn LKR
Thermal - Coal	9397.08 Mn LKR
Thermal - Furnace Oil	4589.98 Mn LKR
Thermal - Diesel	517.07 Mn LKR
Thermal - Naphtha	126.78 Mn LKR
Wind - CEB	516.93 Mn LKR
Wind - IPP	915.54 Mn LKR
Solar - IPP - Ground Mounted	333.41 Mn LKR
Solar - Roof Top	1279.77 Mn LKR
Mini Hydro	1250.62 Mn LKR
Municipal Solid Waste	261.40 Mn LKR
Total Generation Cost	20,099.45 Mn LKR

Generation Energy Cost (Sept)	14,806.57 Mn LKR
*Generation Capacity Cost (Sept)	4,295.89 Mn LKR
Other Cost (Sept)	996.98 Mn LKR

Average Unit Cost of Generation (Sept) **18.54 LKR/kWh**

Note -

* Capacity cost is based on the approved BST submission.