



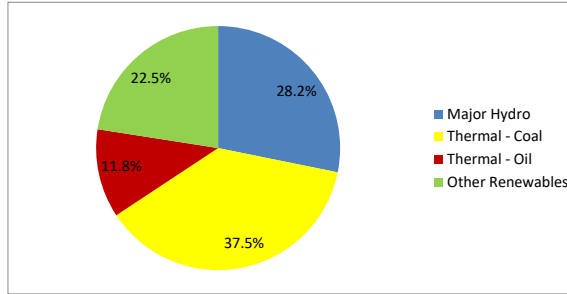
Daily Electricity Generation & Cost Estimation Report

23rd September 2024



Daily Generation Mix -23rd Sept 2024

Plant Type	Generation (GWh)	Percentage
Major Hydro	12.29	28.2%
Thermal - Coal	16.36	37.5%
Thermal - Furnace Oil	5.13	11.8%
Thermal - Diesel	0.00	0.0%
Thermal - Naphtha	0.00	0.0%
Wind - CEB	2.32	5.3%
Wind - IPP	2.63	6.0%
Solar - IPP - Ground Mounted	0.68	1.6%
Solar - Roof Top	2.14	4.9%
Mini Hydro	1.86	4.3%
Municipal Solid Waste	0.19	0.4%
Total	43.61	



Note - Estimated generation from roof top solar, non-telemetered solar and mini hydro plants has been included in the above figures

Estimated Generation Cost : 23rd Sept 2024

Plant Type	Energy Cost (Mn LKR)	Non Fuel Energy Cost (Mn LKR)	Capacity Cost (Mn LKR)	Total Cost of Generation (Mn LKR)	Energy Cost per Unit (LKR/kWh)	Non fuel Energy Cost per Unit (LKR/kWh)	Capacity Charge per Unit (LKR/kWh)	Cost of Electricity per Unit (LKR/kWh)
Major Hydro	0.0	0.0	38.0	38.0	0.00	0.00	3.09	3.09
Thermal - Coal	298.9	28.4	44.5	371.8	18.27	1.73	2.72	22.72
Thermal - Furnace Oil	224.3	9.7	51.7	285.7	43.74	1.89	10.09	55.72
Thermal - Diesel	0.0	1.5	20.0	21.5	0.00	0.00	0.00	0.00
Thermal - Naphtha	0.0	2.0	3.3	5.3	0.00	0.00	0.00	0.00
Wind - CEB	0.0	0.0	21.5	21.5	0.00	0.00	9.30	9.30
Wind - IPP	42.5	0.0	0.0	42.5	16.12	0.00	0.00	16.12
Solar - IPP - Ground Mounted	13.3	0.0	0.0	13.3	19.50	0.00	0.00	19.50
Solar - Roof Top	53.3	0.0	0.0	53.3	24.92	0.00	0.00	24.92
Mini Hydro	27.1	0.0	0.0	27.1	14.61	0.00	0.00	14.61
Municipal Solid Waste	7.6	0.0	0.0	7.6	39.30	0.00	0.00	39.30
Total	667.1	41.5	179.0	887.6	15.30	0.95	4.10	20.36

Note -

Start/Stop costs has been excluded in the calculation

Capacity cost is based on the approved BST submission.

Unit Cost of Generation for the day : **20.36 LKR/kWh**
 Total Generation Cost for the day: **887.62 Mn LKR**

Fuel Prices

(as at 1st Sept 2024)

	Price (LKR/Liter or LKR/kg)
Furnace	181.00
Coal	44.50
Naphtha	197.06
Auto Diesel	307.00

Scheduled (Day Ahead) Generation Mix - 23rd Sept 2024 (Excluding generation from non telemetered power plants)

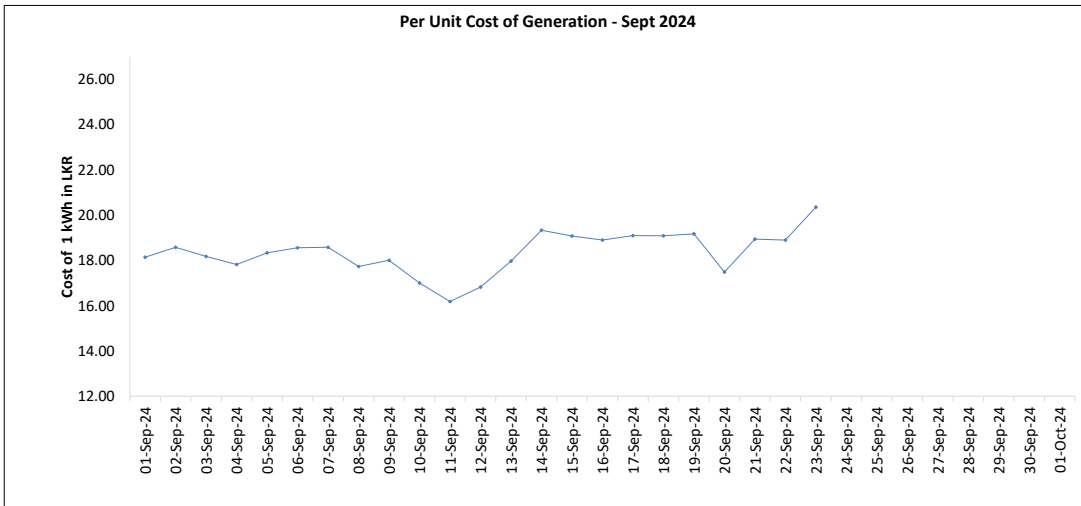
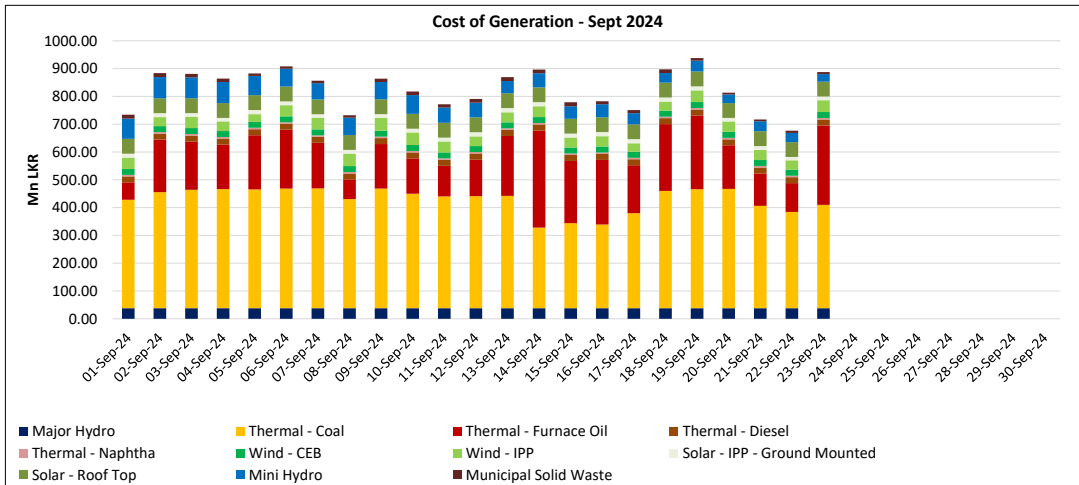
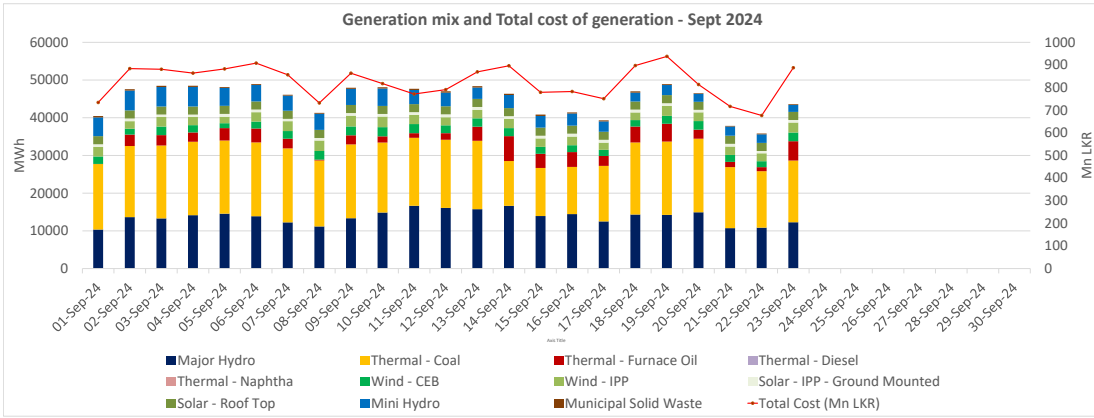
Plant Type	Generation (GWh)	Percentage
Major Hydro	12.5	31%
Thermal - Coal	15.0	37%
Thermal - Furnace Oil	6.6	16%
Thermal - Diesel	0.0	0%
Thermal - Naphtha	0.0	0%
Wind - CEB	3.7	9%
Wind - IPP	0.6	2%
Solar	1.94	5%
Mini Hydro		
Total	40.28	

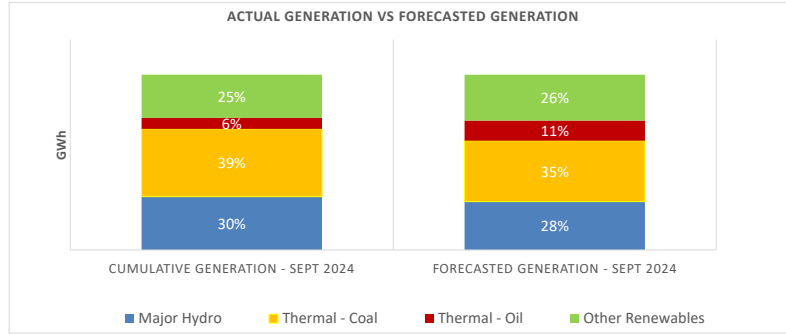
Estimated Generation Cost for the Scheduled Dispatch (Excluding non telemetered NCRE plants) **852.94 Mn LKR**

Actual Generation Mix - 23rd Sept 2024 (Excluding generation from non telemetered power plants)

Plant Type	Generation (GWh)	Percentage
Major Hydro	12.3	30%
Thermal - Coal	16.4	40%
Thermal - Furnace Oil	5.1	12%
Thermal - Diesel	0.00	0%
Thermal - Naphtha	0.0	0%
Wind - CEB	2.3	6%
Wind - IPP	2.6	6%
Solar	0.7	2%
Mini Hydro	1.8	4%
Total	41.17	

Estimated Generation Cost for the Actual Dispatch (Excluding non telemetered NCRE plants) **825.10 Mn LKR**





	Cumulative Generation - Sept 2024 [GWh]	Forecasted Generation - Sept 2024 [GWh]
Major Hydro	315	380
Thermal - Coal	401	479
Thermal - Oil	65	158
Other Renewables	256	360
Total	1036	1377

Forecasted Generation - SDDP Aug 2024

Estimated Cost of Generation - Sept 2024 (Mn LKR)

Major Hydro	872.91 Mn LKR
Thermal - Coal	9002.61 Mn LKR
Thermal - Furnace Oil	4116.33 Mn LKR
Thermal - Diesel	495.60 Mn LKR
Thermal - Naphtha	121.50 Mn LKR
Wind - CEB	495.39 Mn LKR
Wind - IPP	872.01 Mn LKR
Solar - IPP - Ground Mounted	318.77 Mn LKR
Solar - Roof Top	1226.45 Mn LKR
Mini Hydro	1220.77 Mn LKR
Municipal Solid Waste	252.37 Mn LKR
Total Generation Cost	18,994.70 Mn LKR

Generation Energy Cost (Sept) 13,922.36 Mn LKR

*Generation Capacity Cost (Sept) 4,116.90 Mn LKR

Other Cost (Sept) 955.44 Mn LKR

Average Unit Cost of Generation (Sept) 18.33 LKR/kWh

Note -

* Capacity cost is based on the approved BST submission.