



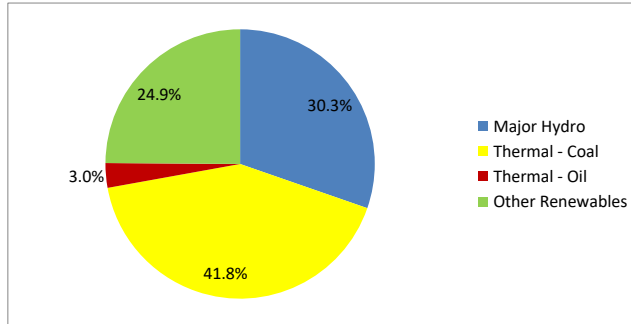
Daily Electricity Generation & Cost Estimation Report

22nd September 2024



Daily Generation Mix -22nd Sept 2024

Plant Type	Generation (GWh)	Percentage
Major Hydro	10.86	30.3%
Thermal - Coal	14.98	41.8%
Thermal - Furnace Oil	1.06	3.0%
Thermal - Diesel	0.00	0.0%
Thermal - Naphtha	0.00	0.0%
Wind - CEB	1.57	4.4%
Wind - IPP	2.11	5.9%
Solar - IPP - Ground Mounted	0.61	1.7%
Solar - Roof Top	2.14	6.0%
Mini Hydro	2.28	6.4%
Municipal Solid Waste	0.21	0.6%
Total	35.81	



Note – Estimated generation from roof top solar, non-telemetered solar and mini hydro plants has been included in the above figures

Estimated Generation Cost : 22nd Sept 2024

Plant Type	Energy Cost (Mn LKR)	Non Fuel Energy Cost (Mn LKR)	Capacity Cost (Mn LKR)	Total Cost of Generation (Mn LKR)	Energy Cost per Unit (LKR/kWh)	Non fuel Energy Cost per Unit (LKR/kWh)	Capacity Charge per Unit (LKR/kWh)	Cost of Electricity per Unit (LKR/kWh)
Major Hydro	0.0	0.0	38.0	38.0	0.00	0.00	3.50	3.50
Thermal - Coal	273.7	28.4	44.5	346.6	18.27	1.89	2.97	23.13
Thermal - Furnace Oil	42.0	9.7	51.7	103.4	39.76	9.17	48.93	97.85
Thermal - Diesel	0.0	1.5	20.0	21.5	0.00	0.00	0.00	0.00
Thermal - Naphtha	0.0	2.0	3.3	5.3	0.00	0.00	0.00	0.00
Wind - CEB	0.0	0.0	21.5	21.5	0.00	0.00	13.68	13.68
Wind - IPP	34.0	0.0	0.0	34.0	16.12	0.00	0.00	16.12
Solar - IPP - Ground Mounted	11.9	0.0	0.0	11.9	19.50	0.00	0.00	19.50
Solar - Roof Top	53.3	0.0	0.0	53.3	24.92	0.00	0.00	24.92
Mini Hydro	33.3	0.0	0.0	33.3	14.61	0.00	0.00	14.61
Municipal Solid Waste	8.1	0.0	0.0	8.1	39.30	0.00	0.00	39.30
Total	456.2	41.5	179.0	676.8	12.74	1.16	5.00	18.90

Note -

Start/Stop costs has been excluded in the calculation

Capacity cost is based on the approved BST submission.

Unit Cost of Generation for the day : **18.90 LKR/kWh**
 Total Generation Cost for the day: **676.77 Mn LKR**

Fuel Prices

(as at 1st Sept 2024)

	Price (LKR/Liter or LKR/kg)
Furnace	181.00
Coal	44.50
Naphtha	197.06
Auto Diesel	307.00

Scheduled (Day Ahead) Generation Mix - 22nd Sept 2024 (Excluding generation from non telemetered power plants)

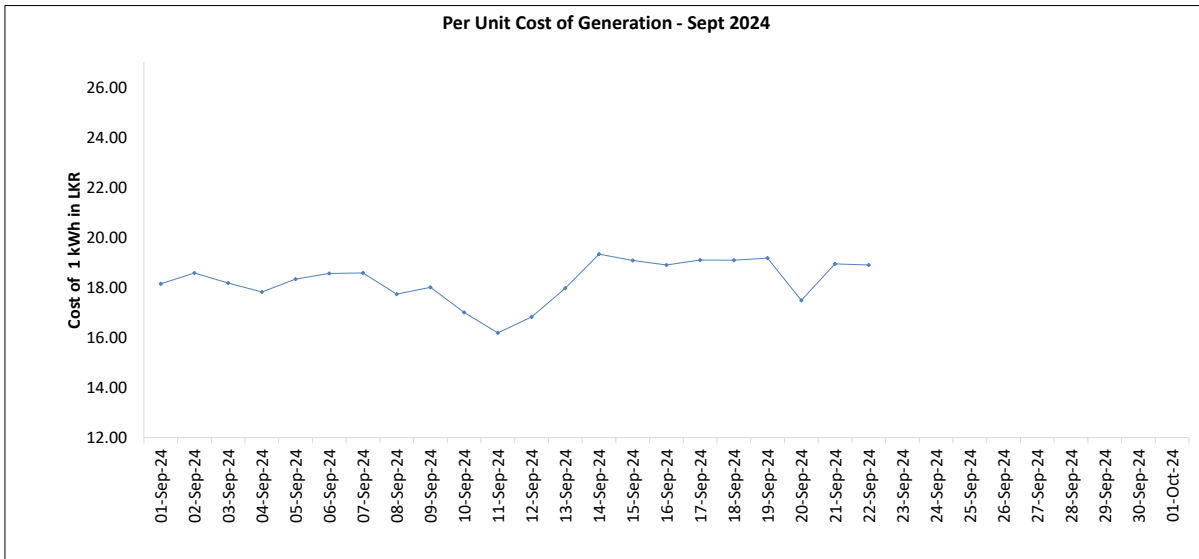
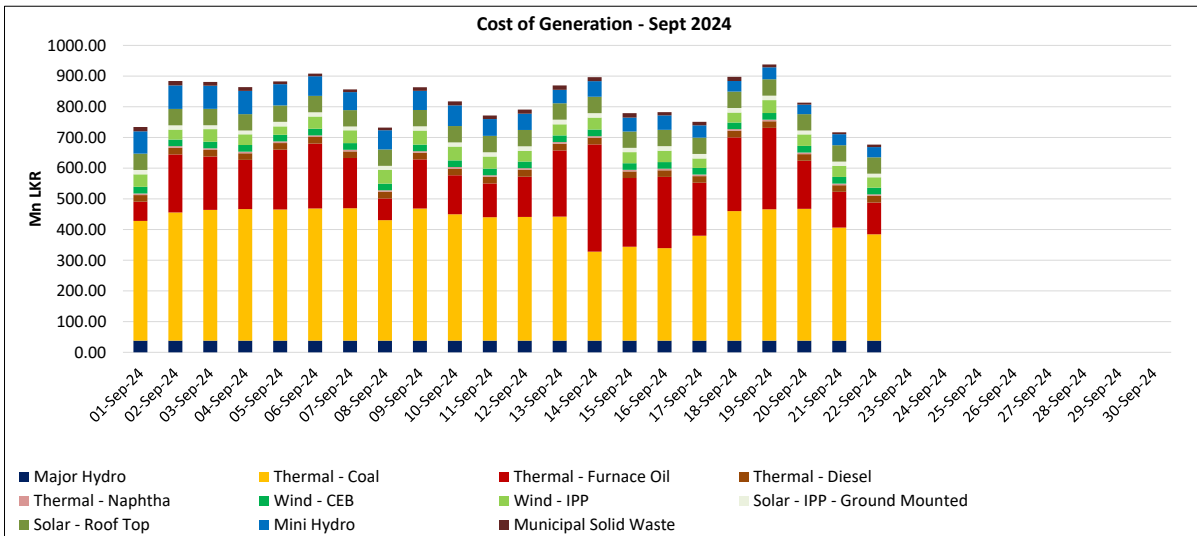
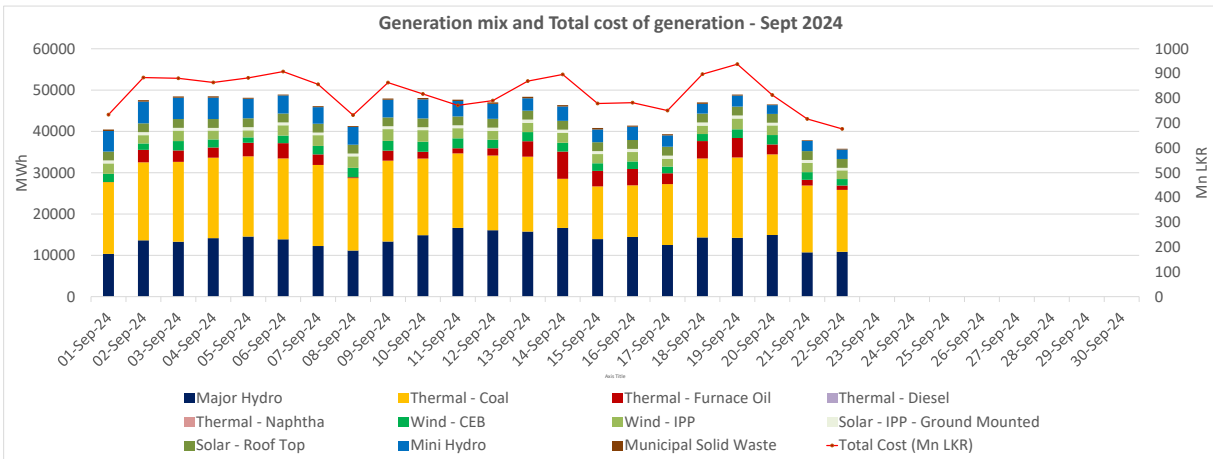
Plant Type	Generation (GWh)	Percentage
Major Hydro	13.0	36%
Thermal - Coal	16.4	46%
Thermal - Furnace Oil	0.5	1%
Thermal - Diesel	0.0	0%
Thermal - Naphtha	0.0	0%
Wind - CEB		
Wind - IPP	3.5	10%
Solar	0.6	2%
Mini Hydro	2.00	6%
Total	35.95	

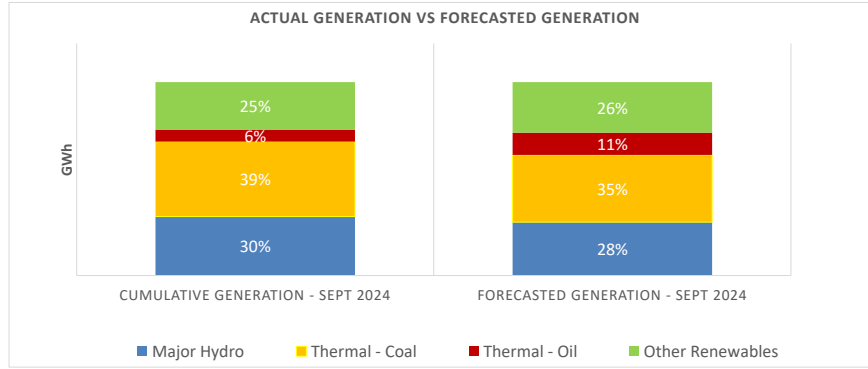
Estimated Generation Cost for the Scheduled Dispatch (Excluding non telemetered NCRE plants) **610.59 Mn LKR**

Actual Generation Mix - 22nd Sept 2024 (Excluding generation from non telemetered power plants)

Plant Type	Generation (GWh)	Percentage
Major Hydro	10.9	33%
Thermal - Coal	15.0	45%
Thermal - Furnace Oil	1.1	3%
Thermal - Diesel	0.00	0%
Thermal - Naphtha	0.0	0%
Wind - CEB	1.6	5%
Wind - IPP	2.1	6%
Solar	0.6	2%
Mini Hydro	1.8	5%
Total	32.98	

Estimated Generation Cost for the Actual Dispatch (Excluding non telemetered NCRE plants) **608.26 Mn LKR**





	Cumulative Generation - Sept 2024 [GWh]	Forecasted Generation - Sept 2024 [GWh]
Major Hydro	303	380
Thermal - Coal	385	479
Thermal - Oil	60	158
Other Renewables	246	360
Total	993	1377

Forecasted Generation - SDDP Aug 2024

Estimated Cost of Generation - Sept 2024 (Mn LKR)

Major Hydro	834.96 Mn LKR
Thermal - Coal	8630.80 Mn LKR
Thermal - Furnace Oil	3830.67 Mn LKR
Thermal - Diesel	474.12 Mn LKR
Thermal - Naphtha	116.22 Mn LKR
Wind - CEB	473.85 Mn LKR
Wind - IPP	829.55 Mn LKR
Solar - IPP - Ground Mounted	305.43 Mn LKR
Solar - Roof Top	1173.12 Mn LKR
Mini Hydro	1193.62 Mn LKR
Municipal Solid Waste	244.74 Mn LKR
Total Generation Cost	18,107.08 Mn LKR

Generation Energy Cost (Sept) 13,255.28 Mn LKR

*Generation Capacity Cost (Sept) 3,937.90 Mn LKR

Other Cost (Sept) 913.90 Mn LKR

Average Unit Cost of Generation (Sept) 18.24 LKR/kWh

Note -

* Capacity cost is based on the approved BST submission.