



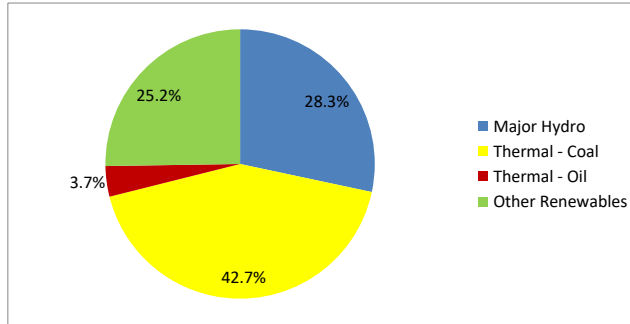
Daily Electricity Generation & Cost Estimation Report

21st September 2024



Daily Generation Mix -21st Sept 2024

Plant Type	Generation (GWh)	Percentage
Major Hydro	10.73	28.3%
Thermal - Coal	16.18	42.7%
Thermal - Furnace Oil	1.39	3.7%
Thermal - Diesel	0.00	0.0%
Thermal - Naphtha	0.00	0.0%
Wind - CEB	1.84	4.9%
Wind - IPP	2.23	5.9%
Solar - IPP - Ground Mounted	0.73	1.9%
Solar - Roof Top	2.14	5.7%
Mini Hydro	2.46	6.5%
Municipal Solid Waste	0.16	0.4%
Total	37.85	



Note – Estimated generation from roof top solar, non-telemetered solar and mini hydro plants has been included in the above figures

Estimated Generation Cost : 21st Sept 2024

Plant Type	Energy Cost (Mn LKR)	Non Fuel Energy Cost (Mn LKR)	Capacity Cost (Mn LKR)	Total Cost of Generation (Mn LKR)	Energy Cost per Unit (LKR/kWh)	Non fuel Energy Cost per Unit (LKR/kWh)	Capacity Charge per Unit (LKR/kWh)	Cost of Electricity per Unit (LKR/kWh)
Major Hydro	0.0	0.0	38.0	38.0	0.00	0.00	3.54	3.54
Thermal - Coal	295.6	28.4	44.5	368.5	18.27	1.75	2.75	22.77
Thermal - Furnace Oil	55.2	9.7	51.7	116.6	39.79	6.99	37.31	84.10
Thermal - Diesel	0.0	1.5	20.0	21.5	0.00	0.00	0.00	0.00
Thermal - Naphtha	0.0	2.0	3.3	5.3	0.00	0.00	0.00	0.00
Wind - CEB	0.0	0.0	21.5	21.5	0.00	0.00	11.70	11.70
Wind - IPP	35.9	0.0	0.0	35.9	16.12	0.00	0.00	16.12
Solar - IPP - Ground Mounted	14.2	0.0	0.0	14.2	19.50	0.00	0.00	19.50
Solar - Roof Top	53.3	0.0	0.0	53.3	24.92	0.00	0.00	24.92
Mini Hydro	35.9	0.0	0.0	35.9	14.61	0.00	0.00	14.61
Municipal Solid Waste	6.3	0.0	0.0	6.3	39.30	0.00	0.00	39.30
Total	496.4	41.5	179.0	716.9	13.11	1.10	4.73	18.94

Note -

Start/Stop costs has been excluded in the calculation

Capacity cost is based on the approved BST submission.

Unit Cost of Generation for the day : **18.94 LKR/kWh**
 Total Generation Cost for the day: **716.89 Mn LKR**

Fuel Prices

(as at 1st Sept 2024)

	Price (LKR/Liter or LKR/kg)
Furnace	181.00
Coal	44.50
Naphtha	197.06
Auto Diesel	307.00

Scheduled (Day Ahead) Generation Mix - 21st Sept 2024 (Excluding generation from non telemetered power plants)

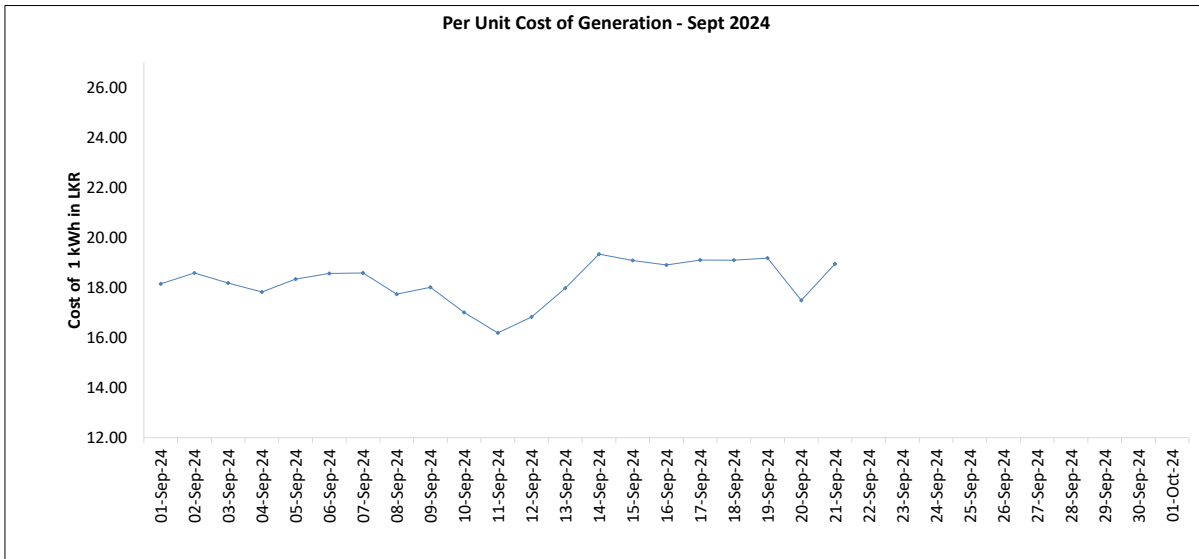
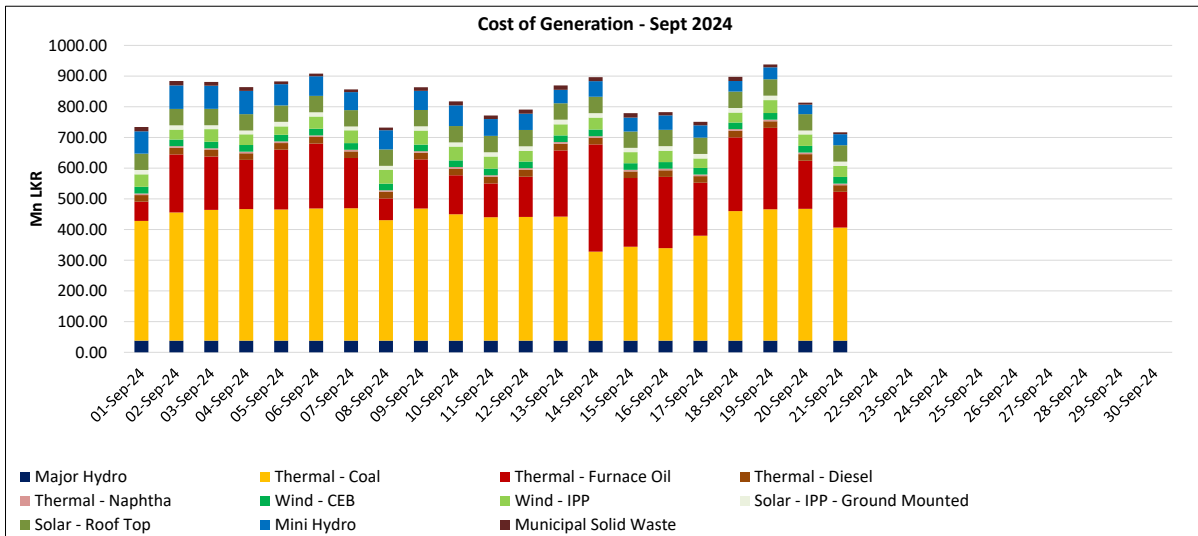
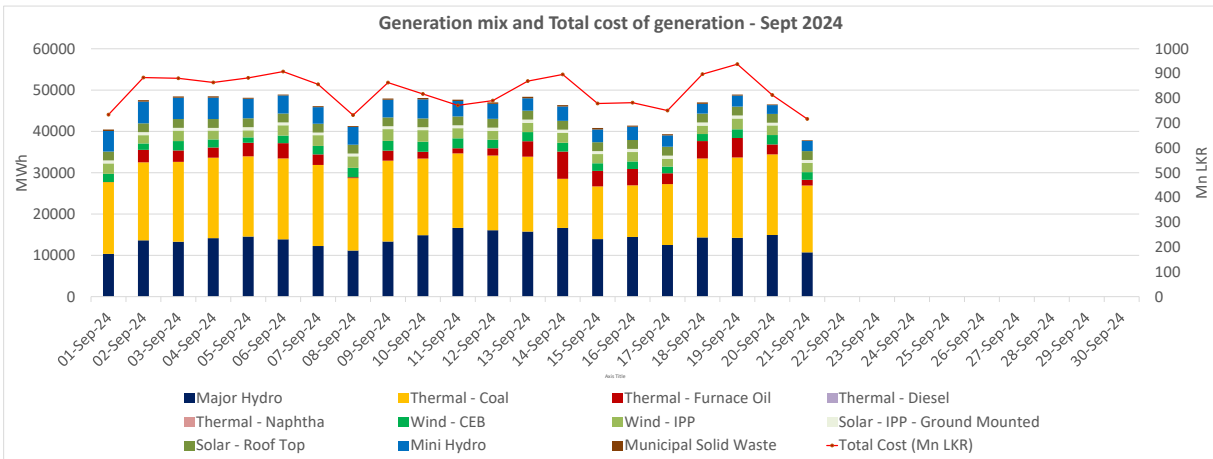
Plant Type	Generation (GWh)	Percentage
Major Hydro	11.2	31%
Thermal - Coal	17.4	47%
Thermal - Furnace Oil	1.3	4%
Thermal - Diesel	0.0	0%
Thermal - Naphtha	0.0	0%
Wind - CEB	4.0	11%
Wind - IPP	0.6	2%
Solar	2.05	6%
Mini Hydro	2.05	6%
Total	36.58	

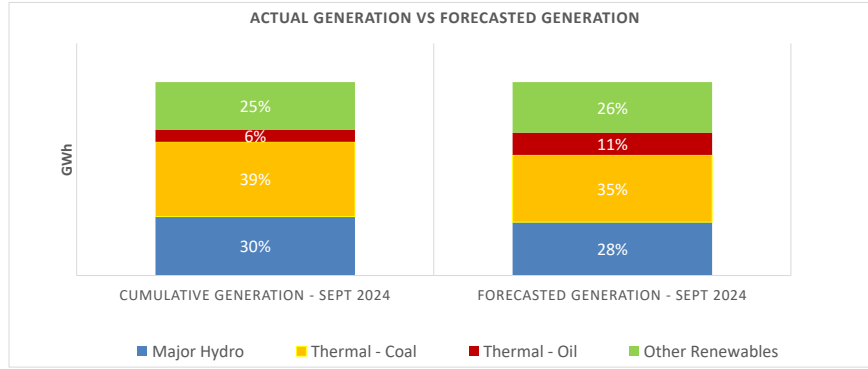
Estimated Generation Cost for the Scheduled Dispatch (Excluding non telemetered NCRE plants) **664.71 Mn LKR**

Actual Generation Mix - 21st Sept 2024 (Excluding generation from non telemetered power plants)

Plant Type	Generation (GWh)	Percentage
Major Hydro	10.7	31%
Thermal - Coal	16.2	46%
Thermal - Furnace Oil	1.4	4%
Thermal - Diesel	0.00	0%
Thermal - Naphtha	0.0	0%
Wind - CEB	1.8	5%
Wind - IPP	2.2	6%
Solar	0.7	2%
Mini Hydro	1.9	6%
Total	35.03	

Estimated Generation Cost for the Actual Dispatch (Excluding non telemetered NCRE plants) **649.61 Mn LKR**





	Cumulative Generation - Sept 2024 [GWh]	Forecasted Generation - Sept 2024 [GWh]
Major Hydro	292	380
Thermal - Coal	370	479
Thermal - Oil	58	158
Other Renewables	237	360
Total	957	1377

Forecasted Generation - SDDP Aug 2024

Estimated Cost of Generation - Sept 2024 (Mn LKR)

Major Hydro	797.00 Mn LKR
Thermal - Coal	8284.23 Mn LKR
Thermal - Furnace Oil	3727.24 Mn LKR
Thermal - Diesel	452.65 Mn LKR
Thermal - Naphtha	110.93 Mn LKR
Wind - CEB	452.31 Mn LKR
Wind - IPP	795.59 Mn LKR
Solar - IPP - Ground Mounted	293.55 Mn LKR
Solar - Roof Top	1119.80 Mn LKR
Mini Hydro	1160.36 Mn LKR
Municipal Solid Waste	236.65 Mn LKR
Total Generation Cost	17,430.31 Mn LKR

Generation Energy Cost (Sept) 12,799.04 Mn LKR

*Generation Capacity Cost (Sept) 3,758.91 Mn LKR

Other Cost (Sept) 872.36 Mn LKR

Average Unit Cost of Generation (Sept) 18.22 LKR/kWh

Note -

* Capacity cost is based on the approved BST submission.