



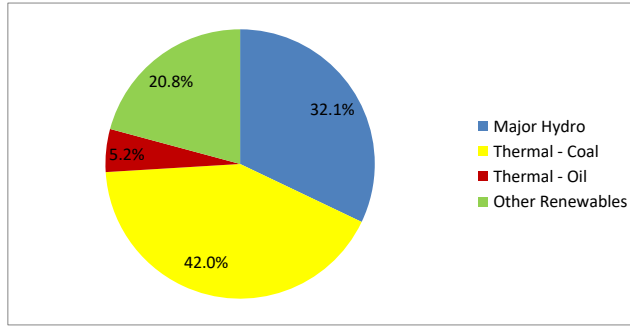
Daily Electricity Generation & Cost Estimation Report

20th September 2024



Daily Generation Mix -20th Sept 2024

Plant Type	Generation (GWh)	Percentage
Major Hydro	14.93	32.1%
Thermal - Coal	19.52	42.0%
Thermal - Furnace Oil	2.40	5.2%
Thermal - Diesel	0.00	0.0%
Thermal - Naphtha	0.00	0.0%
Wind - CEB	2.28	4.9%
Wind - IPP	2.33	5.0%
Solar - IPP - Ground Mounted	0.65	1.4%
Solar - Roof Top	2.14	4.6%
Mini Hydro	2.12	4.6%
Municipal Solid Waste	0.16	0.4%
Total	46.52	



Note – Estimated generation from roof top solar, non-telemetered solar and mini hydro plants has been included in the above figures

Estimated Generation Cost : 20th Sept 2024

Plant Type	Energy Cost (Mn LKR)	Non Fuel Energy Cost (Mn LKR)	Capacity Cost (Mn LKR)	Total Cost of Generation (Mn LKR)	Energy Cost per Unit (LKR/kWh)	Non fuel Energy Cost per Unit (LKR/kWh)	Capacity Charge per Unit (LKR/kWh)	Cost of Electricity per Unit (LKR/kWh)
Major Hydro	0.0	0.0	38.0	38.0	0.00	0.00	2.54	2.54
Thermal - Coal	356.6	28.4	44.5	429.5	18.27	1.45	2.28	22.00
Thermal - Furnace Oil	95.4	9.7	51.7	156.8	39.80	4.04	21.58	65.43
Thermal - Diesel	0.0	1.5	20.0	21.5	0.00	0.00	0.00	0.00
Thermal - Naphtha	0.0	2.0	3.3	5.3	0.00	0.00	0.00	0.00
Wind - CEB	0.0	0.0	21.5	21.5	0.00	0.00	9.45	9.45
Wind - IPP	37.5	0.0	0.0	37.5	16.12	0.00	0.00	16.12
Solar - IPP - Ground Mounted	12.7	0.0	0.0	12.7	19.50	0.00	0.00	19.50
Solar - Roof Top	53.3	0.0	0.0	53.3	24.92	0.00	0.00	24.92
Mini Hydro	31.0	0.0	0.0	31.0	14.61	0.00	0.00	14.61
Municipal Solid Waste	6.4	0.0	0.0	6.4	39.30	0.00	0.00	39.30
Total	592.9	41.5	179.0	813.5	12.74	0.89	3.85	17.49

Note -

Start/Stop costs has been excluded in the calculation

Capacity cost is based on the approved BST submission.

Unit Cost of Generation for the day : **17.49 LKR/kWh**
 Total Generation Cost for the day: **813.47 Mn LKR**

Fuel Prices

(as at 1st Sept 2024)

	Price (LKR/Liter or LKR/kg)
Furnace	181.00
Coal	44.50
Naphtha	197.06
Auto Diesel	307.00

Scheduled (Day Ahead) Generation Mix - 20th Sept 2024 (Excluding generation from non telemetered power plants)

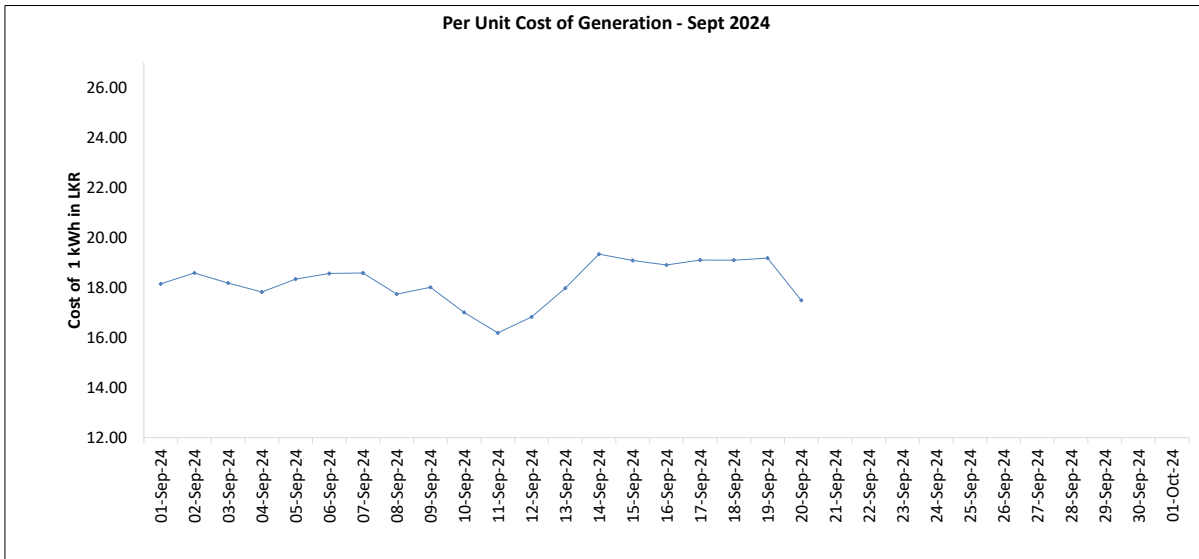
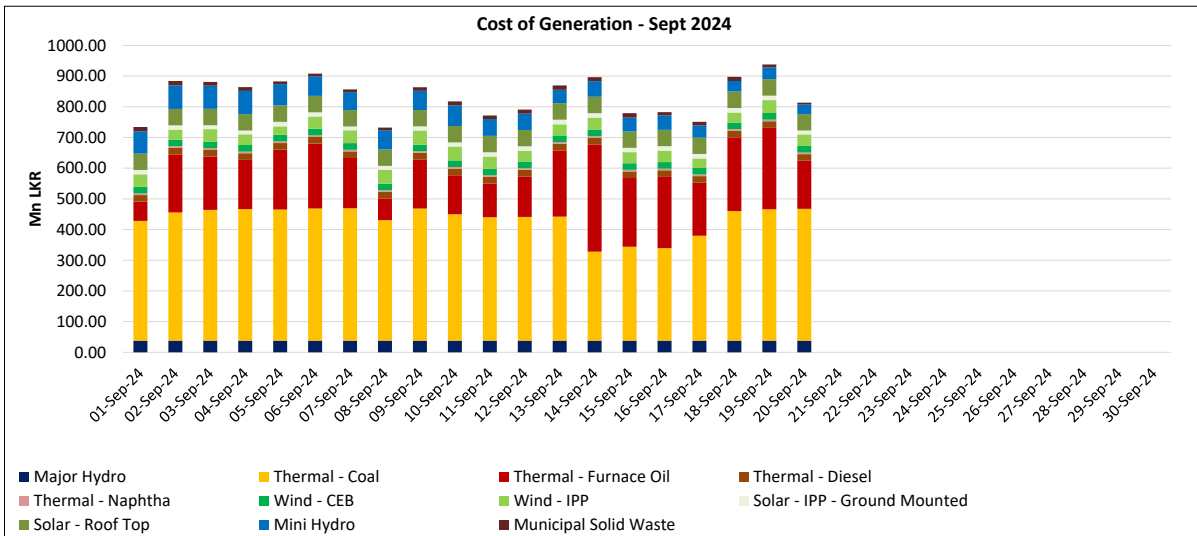
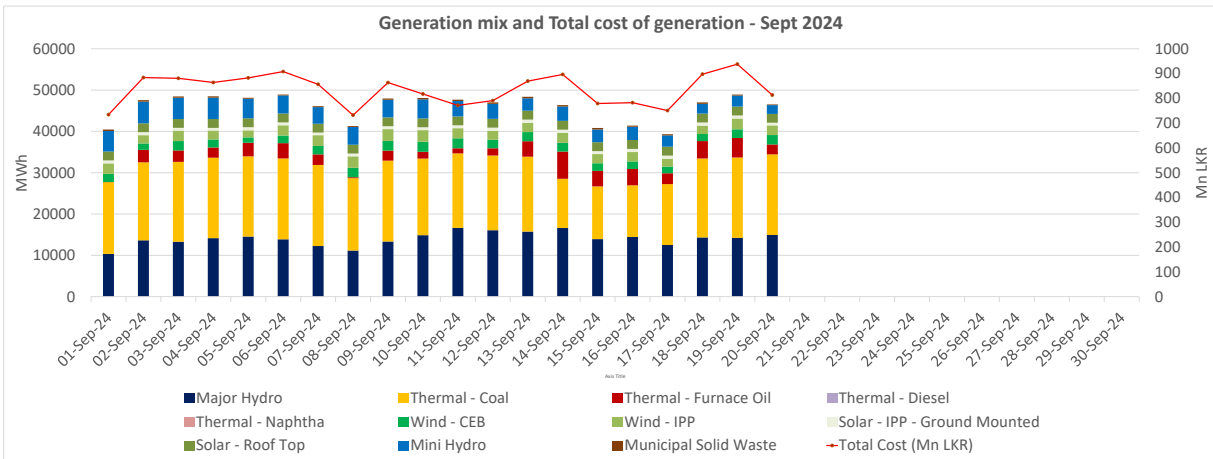
Plant Type	Generation (GWh)	Percentage
Major Hydro	14.9	35%
Thermal - Coal	19.4	46%
Thermal - Furnace Oil	1.7	4%
Thermal - Diesel	0.0	0%
Thermal - Naphtha	0.0	0%
Wind - CEB	3.7	9%
Wind - IPP	0.6	1%
Solar	2.23	5%
Mini Hydro		
Total	42.55	

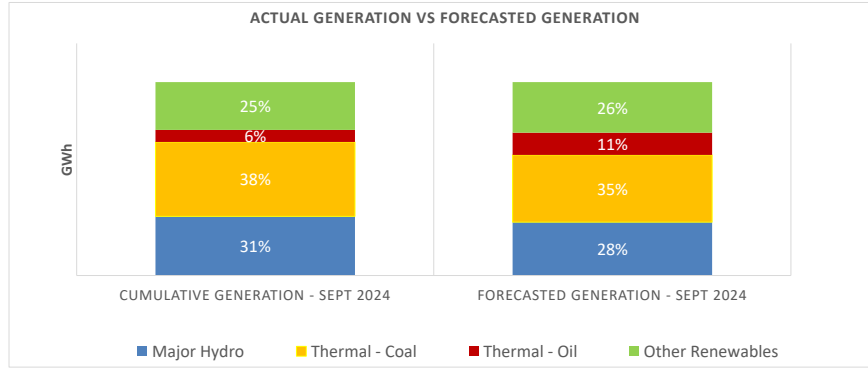
Estimated Generation Cost for the Scheduled Dispatch (Excluding non telemetered NCRE plants) **719.31 Mn LKR**

Actual Generation Mix - 20th Sept 2024 (Excluding generation from non telemetered power plants)

Plant Type	Generation (GWh)	Percentage
Major Hydro	14.9	34%
Thermal - Coal	19.5	44%
Thermal - Furnace Oil	2.4	5%
Thermal - Diesel	0.00	0%
Thermal - Naphtha	0.0	0%
Wind - CEB	2.3	5%
Wind - IPP	2.3	5%
Solar	0.7	1%
Mini Hydro	2.0	5%
Total	44.10	

Estimated Generation Cost for the Actual Dispatch (Excluding non telemetered NCRE plants) **751.91 Mn LKR**





	Cumulative Generation - Sept 2024 [GWh]	Forecasted Generation - Sept 2024 [GWh]
Major Hydro	281	380
Thermal - Coal	354	479
Thermal - Oil	57	158
Other Renewables	227	360
Total	919	1377

Forecasted Generation - SDDP Aug 2024

Estimated Cost of Generation - Sept 2024 (Mn LKR)

Major Hydro	759.05 Mn LKR
Thermal - Coal	7915.77 Mn LKR
Thermal - Furnace Oil	3610.68 Mn LKR
Thermal - Diesel	431.17 Mn LKR
Thermal - Naphtha	105.65 Mn LKR
Wind - CEB	430.78 Mn LKR
Wind - IPP	759.66 Mn LKR
Solar - IPP - Ground Mounted	279.40 Mn LKR
Solar - Roof Top	1066.48 Mn LKR
Mini Hydro	1124.43 Mn LKR
Municipal Solid Waste	230.36 Mn LKR
Total Generation Cost	16,713.42 Mn LKR

Generation Energy Cost (Sept) 12,302.69 Mn LKR

*Generation Capacity Cost (Sept) 3,579.91 Mn LKR

Other Cost (Sept) 830.82 Mn LKR

Average Unit Cost of Generation (Sept) 18.19 LKR/kWh

Note -

* Capacity cost is based on the approved BST submission.