



# Daily Electricity Generation & Cost Estimation Report

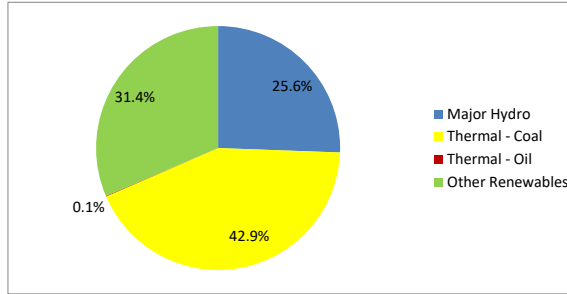
---

1st September 2024



**Daily Generation Mix -1st Sept 2024**

Plant Type	Generation (GWh)	Percentage
Major Hydro	10.35	25.6%
Thermal - Coal	17.37	42.9%
Thermal - Furnace Oil	0.03	0.1%
Thermal - Diesel	0.00	0.0%
Thermal - Naphtha	0.00	0.0%
Wind - CEB	1.98	4.9%
Wind - IPP	2.53	6.3%
Solar - IPP - Ground Mounted	0.72	1.8%
Solar - Roof Top	2.14	5.3%
Mini Hydro	4.98	12.3%
Municipal Solid Waste	0.36	0.9%
<b>Total</b>	<b>40.46</b>	



Note - Estimated generation from roof top solar, non-telemetered solar and mini hydro plants has been included in the above figures

**Estimated Generation Cost : 1st Sept 2024**

Plant Type	Energy Cost (Mn LKR )	Non Fuel Energy Cost (Mn LKR )	Capacity Cost (Mn LKR )	Total Cost of Generation (Mn LKR )	Energy Cost per Unit (LKR/kWh )	Non fuel Energy Cost per Unit (LKR/kWh)	Capacity Charge per Unit (LKR/kWh)	Cost of Electricity per Unit (LKR/kWh)
Major Hydro	0.0	0.0	38.0	38.0	0.00	0.00	3.67	3.67
Thermal - Coal	317.3	28.4	44.5	390.2	18.27	1.63	2.56	22.46
Thermal - Furnace Oil	1.2	9.7	51.7	62.7	40.28	312.63	1668.27	2021.19
Thermal - Diesel	0.0	1.5	20.0	21.5	0.00	0.00	0.00	0.00
Thermal - Naphtha	0.0	2.0	3.3	5.3	0.00	0.00	0.00	0.00
Wind - CEB	0.0	0.0	21.5	21.5	0.00	0.00	10.89	10.89
Wind - IPP	40.8	0.0	0.0	40.8	16.12	0.00	0.00	16.12
Solar - IPP - Ground Mounted	14.1	0.0	0.0	14.1	19.50	0.00	0.00	19.50
Solar - Roof Top	53.3	0.0	0.0	53.3	24.92	0.00	0.00	24.92
Mini Hydro	72.8	0.0	0.0	72.8	14.61	0.00	0.00	14.61
Municipal Solid Waste	14.0	0.0	0.0	14.0	39.30	0.00	0.00	39.30
<b>Total</b>	<b>513.7</b>	<b>41.5</b>	<b>179.0</b>	<b>734.2</b>	<b>12.69</b>	<b>1.03</b>	<b>4.42</b>	<b>18.14</b>

Note -

Start/Stop costs has been excluded in the calculation

Sobadhavi plant is currently in the testing stage; hence, generation cost has not been considered.

Capacity cost is based on the approved BST submission.

Unit Cost of Generation for the day : **18.14 LKR/kWh**  
 Total Generation Cost for the day: **734.19 Mn LKR**

**Fuel Prices**

(\*as at 1st Sept 2024)

	Price (LKR/Liter or LKR/kg)
Furnace	181.00
*Coal	44.50
Naphtha	197.06
Auto Diesel	307.00

**Scheduled (Day Ahead) Generation Mix - 1st Sept 2024 (Excluding generation from non telemetered power plants)**

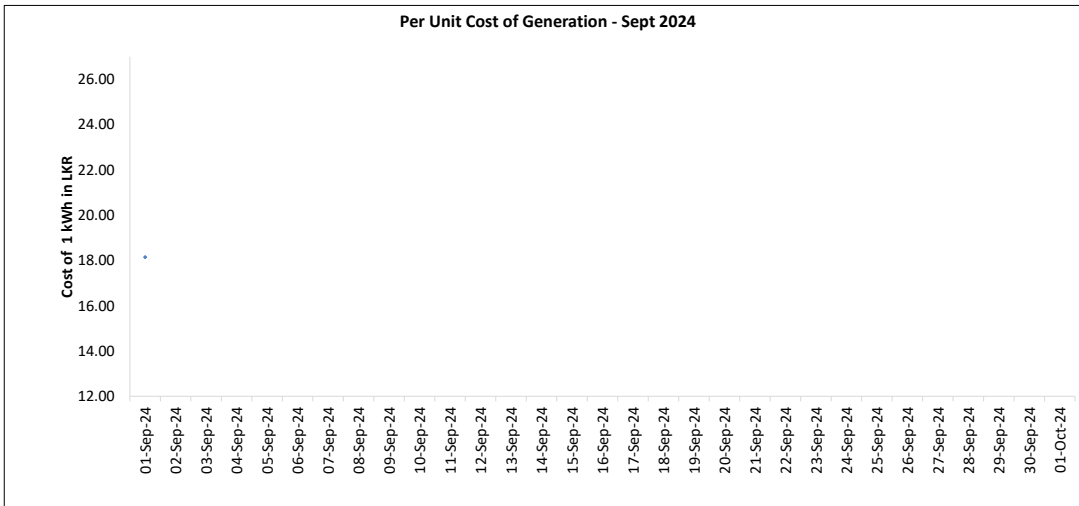
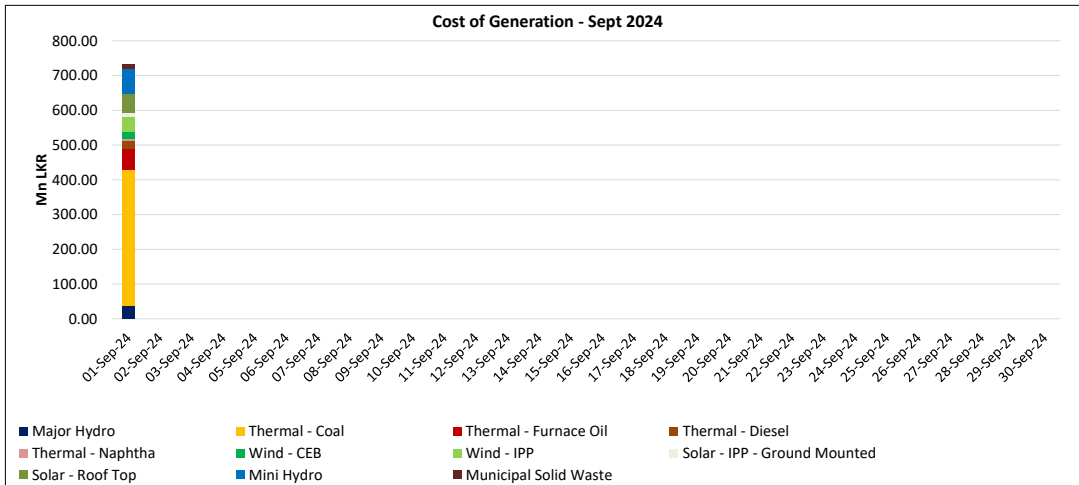
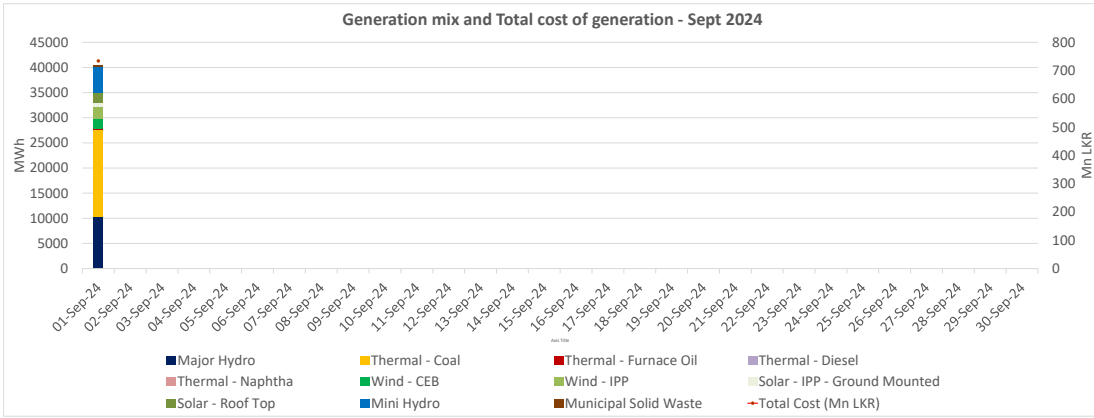
Plant Type	Generation (GWh)	Percentage
Major Hydro	11.5	32%
Thermal - Coal	18.4	52%
Thermal - Furnace Oil	0.0	0%
Thermal - Diesel	0.0	0%
Thermal - Naphtha	0.0	0%
Wind - CEB	2.9	8%
Wind - IPP	0.4	1%
Solar	2.60	7%
Mini Hydro	35.72	
<b>Total</b>	<b>35.72</b>	

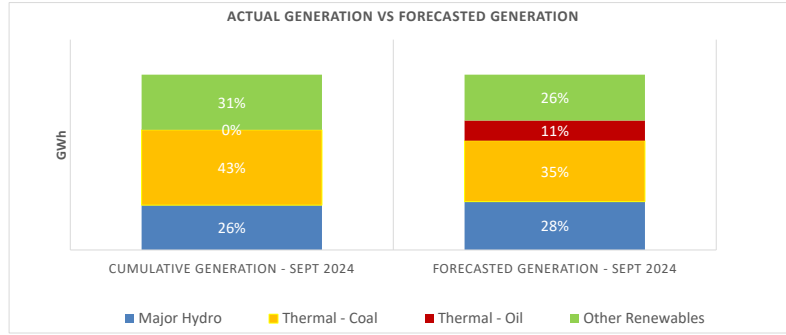
**Actual Generation Mix - 1st Sept 2024 (Excluding generation from non telemetered power plants)**

Plant Type	Generation (GWh)	Percentage
Major Hydro	10.4	28%
Thermal - Coal	17.4	47%
Thermal - Furnace Oil	0.0	0%
Thermal - Diesel	0.00	0%
Thermal - Naphtha	0.0	0%
Wind - CEB	2.0	5%
Wind - IPP	2.5	7%
Solar	0.7	2%
Mini Hydro	3.9	10%
<b>Total</b>	<b>36.85</b>	

Estimated Generation Cost for the Scheduled Dispatch (Excluding non telemetered NCRE plants) **624.93 Mn LKR**

Estimated Generation Cost for the Actual Dispatch (Excluding non telemetered NCRE plants) **650.50 Mn LKR**





	Cumulative Generation - Sept 2024 [GWh]	Forecasted Generation - Sept 2024 [GWh]
Major Hydro	10	380
Thermal - Coal	17	479
Thermal - Oil	0	158
Other Renewables	13	360
<b>Total</b>	<b>40</b>	<b>1377</b>

Forecasted Generation - SDDP Aug 2024

**Estimated Cost of Generation - Sept 2024 ( Mn LKR)**

Major Hydro	37.95 Mn LKR
Thermal - Coal	390.21 Mn LKR
Thermal - Furnace Oil	62.66 Mn LKR
Thermal - Diesel	21.47 Mn LKR
Thermal - Naphtha	5.28 Mn LKR
Wind - CEB	21.54 Mn LKR
Wind - IPP	40.82 Mn LKR
Solar - IPP - Ground Mounted	14.12 Mn LKR
Solar - Roof Top	53.32 Mn LKR
Mini Hydro	72.79 Mn LKR
Municipal Solid Waste	14.03 Mn LKR
<b>Total Generation Cost</b>	<b>734.19 Mn LKR</b>

\* Adjusted total cost based on updated fuel prices

<b>Generation Energy Cost (Sept)</b>	<b>513.66 Mn LKR</b>
<b>*Generation Capacity Cost (Sept)</b>	<b>179.00 Mn LKR</b>
<b>Other Cost (Sept)</b>	<b>41.54 Mn LKR</b>
<b>Average Unit Cost of Generation (Sept)</b>	<b>18.14 LKR/kWh</b>

Note -

\* Capacity cost is based on the approved BST submission.