



# Daily Electricity Generation & Cost Estimation Report

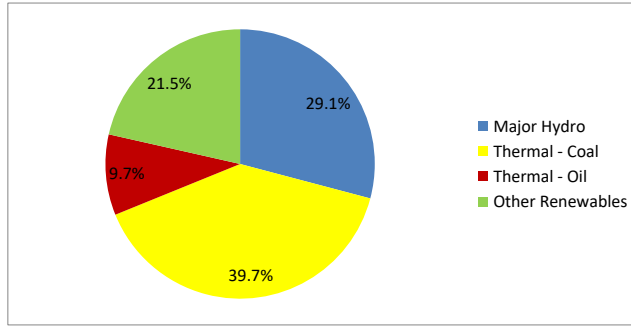
---

19th September 2024



**Daily Generation Mix -19th Sept 2024**

Plant Type	Generation (GWh)	Percentage
Major Hydro	14.24	29.1%
Thermal - Coal	19.44	39.7%
Thermal - Furnace Oil	4.74	9.7%
Thermal - Diesel	0.00	0.0%
Thermal - Naphtha	0.00	0.0%
Wind - CEB	2.09	4.3%
Wind - IPP	2.61	5.3%
Solar - IPP - Ground Mounted	0.74	1.5%
Solar - Roof Top	2.14	4.4%
Mini Hydro	2.68	5.5%
Municipal Solid Waste	0.24	0.5%
<b>Total</b>	<b>48.92</b>	



Note – Estimated generation from roof top solar, non-telemetered solar and mini hydro plants has been included in the above figures

**Estimated Generation Cost : 19th Sept 2024**

Plant Type	Energy Cost (Mn LKR )	Non Fuel Energy Cost (Mn LKR )	Capacity Cost (Mn LKR )	Total Cost of Generation (Mn LKR )	Energy Cost per Unit (LKR/kWh)	Non fuel Energy Cost per Unit (LKR/kWh)	Capacity Charge per Unit (LKR/kWh)	Cost of Electricity per Unit (LKR/kWh)
Major Hydro	0.0	0.0	38.0	38.0	0.00	0.00	2.66	2.66
Thermal - Coal	355.1	28.4	44.5	428.0	18.27	1.46	2.29	22.02
Thermal - Furnace Oil	203.9	9.7	51.7	265.3	43.07	2.05	10.92	56.04
Thermal - Diesel	0.0	1.5	20.0	21.5	0.00	0.00	0.00	0.00
Thermal - Naphtha	0.0	2.0	3.3	5.3	0.00	0.00	0.00	0.00
Wind - CEB	0.0	0.0	21.5	21.5	0.00	0.00	10.29	10.29
Wind - IPP	42.1	0.0	0.0	42.1	16.12	0.00	0.00	16.12
Solar - IPP - Ground Mounted	14.5	0.0	0.0	14.5	19.50	0.00	0.00	19.50
Solar - Roof Top	53.3	0.0	0.0	53.3	24.92	0.00	0.00	24.92
Mini Hydro	39.1	0.0	0.0	39.1	14.61	0.00	0.00	14.61
Municipal Solid Waste	9.2	0.0	0.0	9.2	39.30	0.00	0.00	39.30
<b>Total</b>	<b>717.3</b>	<b>41.5</b>	<b>179.0</b>	<b>937.9</b>	<b>14.66</b>	<b>0.85</b>	<b>3.66</b>	<b>19.17</b>

Note -

Start/Stop costs has been excluded in the calculation

Capacity cost is based on the approved BST submission.

Unit Cost of Generation for the day : **19.17 LKR/kWh**  
 Total Generation Cost for the day: **937.85 Mn LKR**

**Fuel Prices**

( as at 1st Sept 2024)

	Price (LKR/Liter or LKR/kg)
Furnace	181.00
Coal	44.50
Naphtha	197.06
Auto Diesel	307.00

**Scheduled (Day Ahead) Generation Mix - 19th Sept 2024 (Excluding generation from non telemetered power plants)**

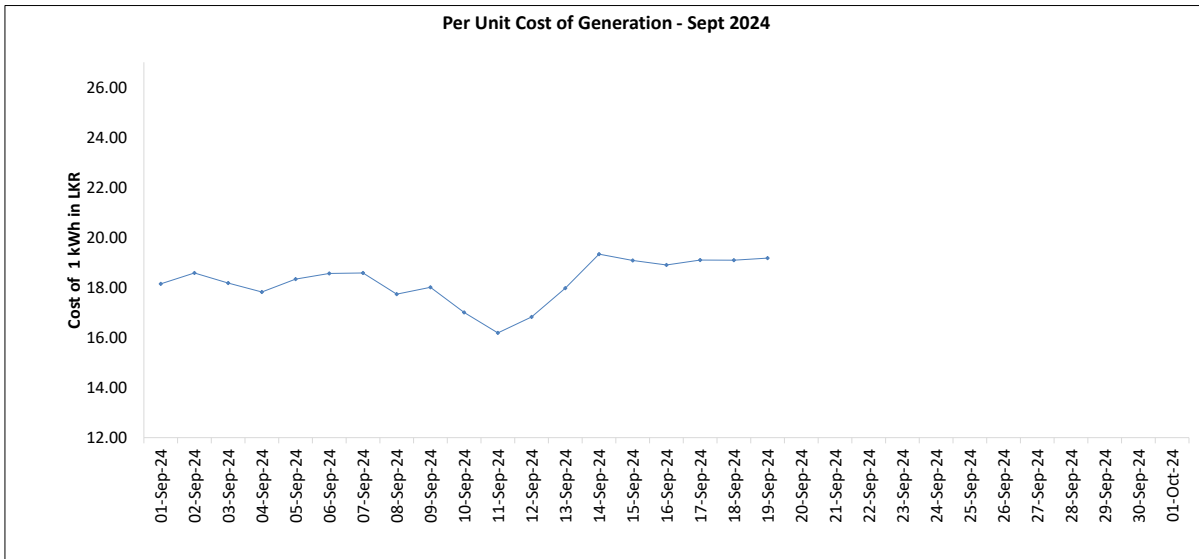
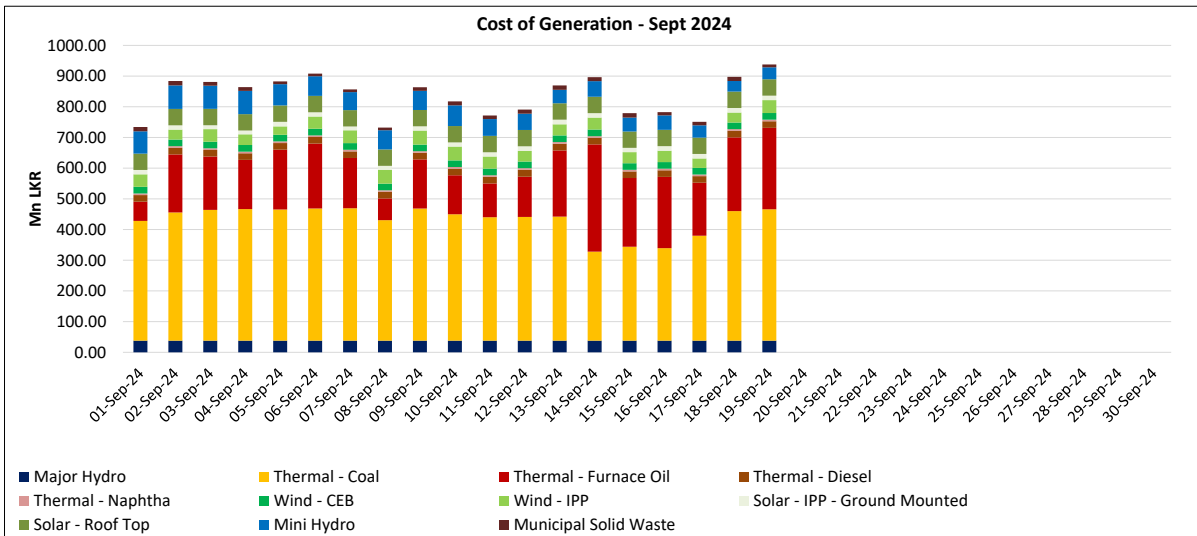
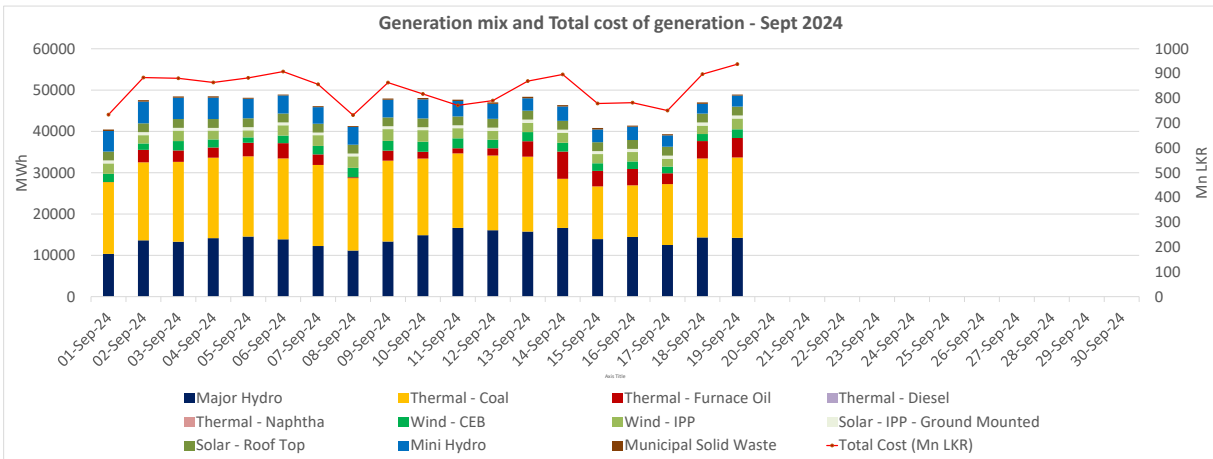
Plant Type	Generation (GWh)	Percentage
Major Hydro	14.6	32%
Thermal - Coal	19.4	43%
Thermal - Furnace Oil	4.8	11%
Thermal - Diesel	0.0	0%
Thermal - Naphtha	0.0	0%
Wind - CEB		
Wind - IPP	3.4	7%
Solar	0.6	1%
Mini Hydro	2.59	6%
<b>Total</b>	<b>45.46</b>	

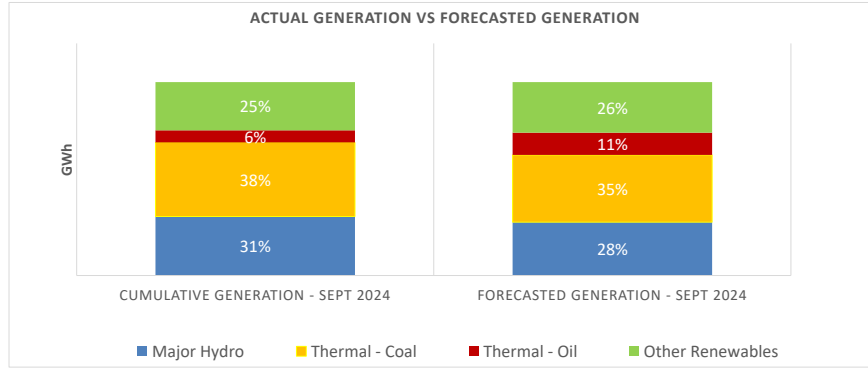
Estimated Generation Cost for the Scheduled Dispatch (Excluding non telemetered NCRE plants) **862.36 Mn LKR**

**Actual Generation Mix - 19th Sept 2024 (Excluding generation from non telemetered power plants)**

Plant Type	Generation (GWh)	Percentage
Major Hydro	14.2	31%
Thermal - Coal	19.4	42%
Thermal - Furnace Oil	4.7	10%
Thermal - Diesel	0.00	0%
Thermal - Naphtha	0.0	0%
Wind - CEB	2.1	5%
Wind - IPP	2.6	6%
Solar	0.7	2%
Mini Hydro	2.1	4%
<b>Total</b>	<b>45.91</b>	

Estimated Generation Cost for the Actual Dispatch (Excluding non telemetered NCRE plants) **866.11 Mn LKR**





	Cumulative Generation - Sept 2024 [GWh]	Forecasted Generation - Sept 2024 [GWh]
Major Hydro	266	380
Thermal - Coal	334	479
Thermal - Oil	55	158
Other Renewables	218	360
<b>Total</b>	<b>872</b>	<b>1377</b>

Forecasted Generation - SDDP Aug 2024

**Estimated Cost of Generation - Sept 2024 ( Mn LKR)**

Major Hydro	721.10 Mn LKR
Thermal - Coal	7486.30 Mn LKR
Thermal - Furnace Oil	3453.90 Mn LKR
Thermal - Diesel	409.70 Mn LKR
Thermal - Naphtha	100.37 Mn LKR
Wind - CEB	409.24 Mn LKR
Wind - IPP	722.18 Mn LKR
Solar - IPP - Ground Mounted	266.68 Mn LKR
Solar - Roof Top	1013.15 Mn LKR
Mini Hydro	1093.43 Mn LKR
Municipal Solid Waste	223.92 Mn LKR
<b>Total Generation Cost</b>	<b>15,899.95 Mn LKR</b>

Generation Energy Cost (Sept) 11,709.76 Mn LKR

\*Generation Capacity Cost (Sept) 3,400.92 Mn LKR

Other Cost (Sept) 789.28 Mn LKR

Average Unit Cost of Generation (Sept) 18.23 LKR/kWh

Note -

\* Capacity cost is based on the approved BST submission.