



# Daily Electricity Generation & Cost Estimation Report

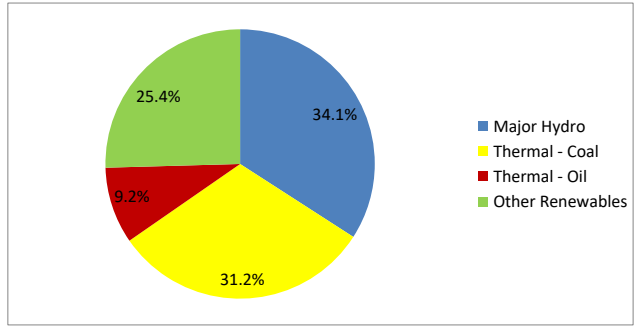
---

15th September 2024



**Daily Generation Mix -15th Sept 2024**

Plant Type	Generation (GWh)	Percentage
Major Hydro	13.93	34.1%
Thermal - Coal	12.76	31.2%
Thermal - Furnace Oil	3.76	9.2%
Thermal - Diesel	0.00	0.0%
Thermal - Naphtha	0.00	0.0%
Wind - CEB	1.83	4.5%
Wind - IPP	2.24	5.5%
Solar - IPP - Ground Mounted	0.72	1.8%
Solar - Roof Top	2.14	5.2%
Mini Hydro	3.09	7.6%
Municipal Solid Waste	0.37	0.9%
<b>Total</b>	<b>40.84</b>	



Note – Estimated generation from roof top solar, non-telemetered solar and mini hydro plants has been included in the above figures

**Estimated Generation Cost : 15th Sept 2024**

Plant Type	Energy Cost (Mn LKR )	Non Fuel Energy Cost (Mn LKR )	Capacity Cost (Mn LKR )	Total Cost of Generation (Mn LKR )	Energy Cost per Unit (LKR/kWh)	Non fuel Energy Cost per Unit (LKR/kWh)	Capacity Charge per Unit (LKR/kWh)	Cost of Electricity per Unit (LKR/kWh)
Major Hydro	0.0	0.0	38.0	38.0	0.00	0.00	2.72	2.72
Thermal - Coal	233.2	28.4	44.5	306.0	18.27	2.22	3.49	23.98
Thermal - Furnace Oil	162.4	9.7	51.7	223.8	43.21	2.58	13.76	59.55
Thermal - Diesel	0.0	1.5	20.0	21.5	0.00	0.00	0.00	0.00
Thermal - Naphtha	0.0	2.0	3.3	5.3	0.00	0.00	0.00	0.00
Wind - CEB	0.0	0.0	21.5	21.5	0.00	0.00	11.76	11.76
Wind - IPP	36.1	0.0	0.0	36.1	16.12	0.00	0.00	16.12
Solar - IPP - Ground Mounted	14.0	0.0	0.0	14.0	19.50	0.00	0.00	19.50
Solar - Roof Top	53.3	0.0	0.0	53.3	24.92	0.00	0.00	24.92
Mini Hydro	45.2	0.0	0.0	45.2	14.61	0.00	0.00	14.61
Municipal Solid Waste	14.5	0.0	0.0	14.5	39.30	0.00	0.00	39.30
<b>Total</b>	<b>558.6</b>	<b>41.5</b>	<b>179.0</b>	<b>779.1</b>	<b>13.68</b>	<b>1.02</b>	<b>4.38</b>	<b>19.08</b>

Note -

Start/Stop costs has been excluded in the calculation

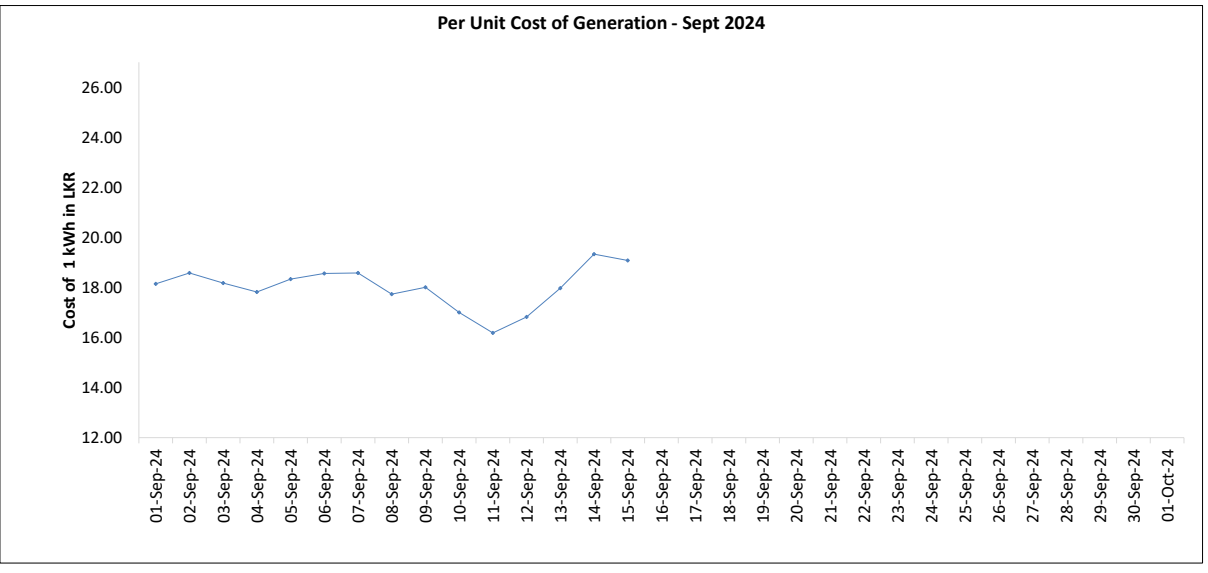
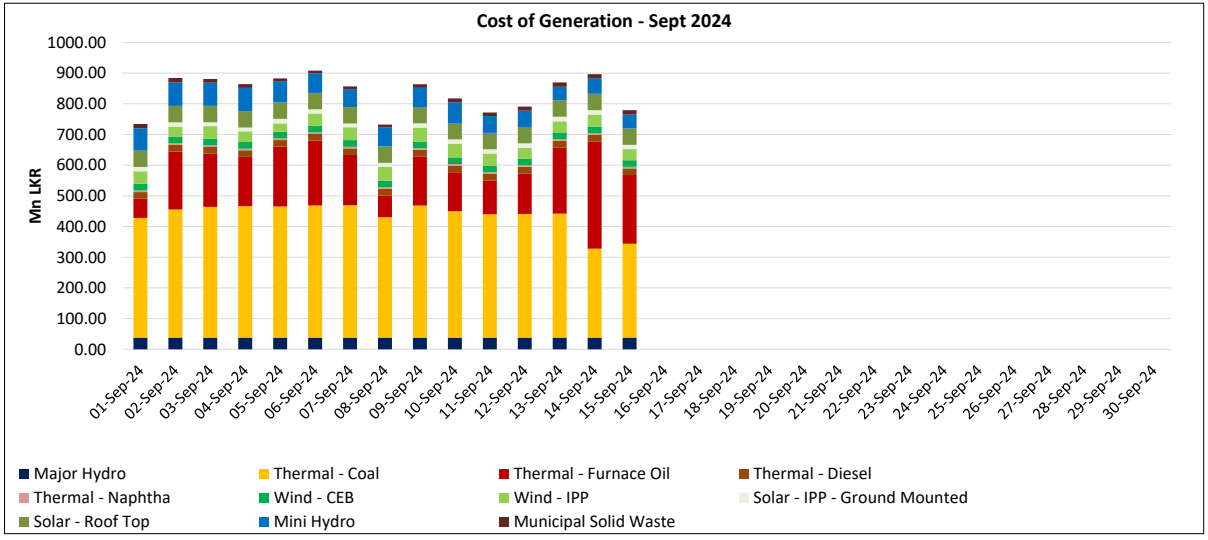
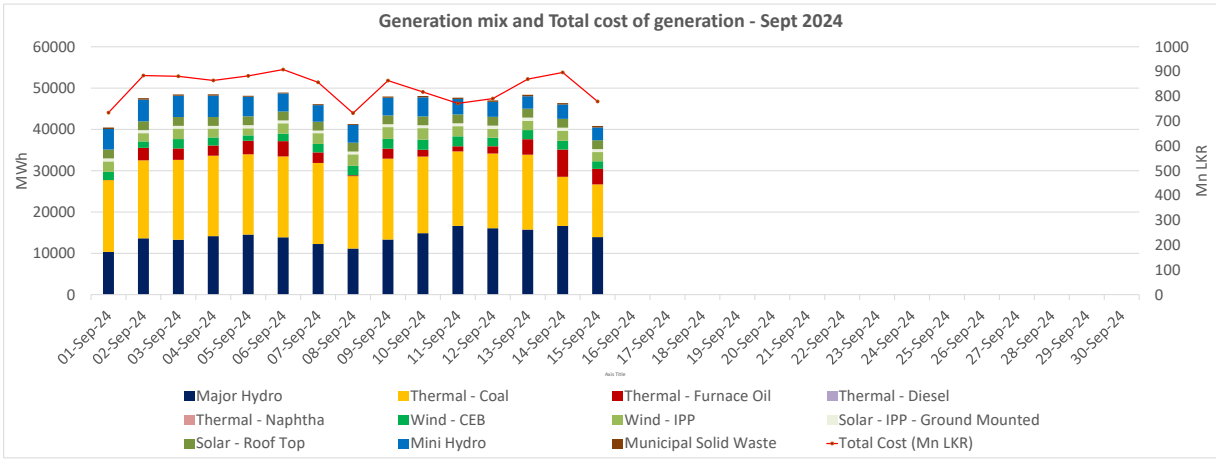
Capacity cost is based on the approved BST submission.

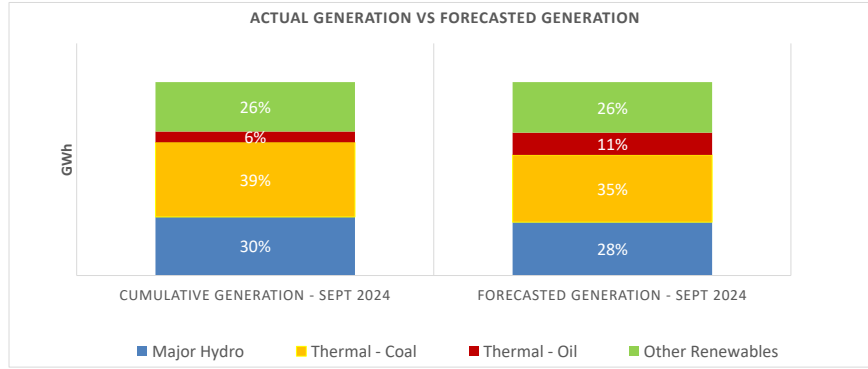
Unit Cost of Generation for the day : **19.08 LKR/kWh**  
 Total Generation Cost for the day: **779.13 Mn LKR**

**Fuel Prices**

( as at 1st Sept 2024)

	Price (LKR/Liter or LKR/kg)
Furnace	181.00
Coal	44.50
Naphtha	197.06
Auto Diesel	307.00





	Cumulative Generation - Sept 2024 [GWh]	Forecasted Generation - Sept 2024 [GWh]
Major Hydro	211	380
Thermal - Coal	268	479
Thermal - Oil	39	158
Other Renewables	178	360
<b>Total</b>	<b>696</b>	<b>1377</b>

Forecasted Generation - SDDP Aug 2024

**Estimated Cost of Generation - Sept 2024 ( Mn LKR)**

Major Hydro	569.29 Mn LKR
Thermal - Coal	5992.87 Mn LKR
Thermal - Furnace Oil	2543.62 Mn LKR
Thermal - Diesel	323.80 Mn LKR
Thermal - Naphtha	79.24 Mn LKR
Wind - CEB	323.08 Mn LKR
Wind - IPP	579.69 Mn LKR
Solar - IPP - Ground Mounted	207.77 Mn LKR
Solar - Roof Top	799.86 Mn LKR
Mini Hydro	932.67 Mn LKR
Municipal Solid Waste	179.31 Mn LKR
<b>Total Generation Cost</b>	<b>12,531.21 Mn LKR</b>

Generation Energy Cost (Sept) 9,223.16 Mn LKR

\*Generation Capacity Cost (Sept) 2,684.93 Mn LKR

Other Cost (Sept) 623.11 Mn LKR

Average Unit Cost of Generation (Sept) 18.01 LKR/kWh

Note -

\* Capacity cost is based on the approved BST submission.