



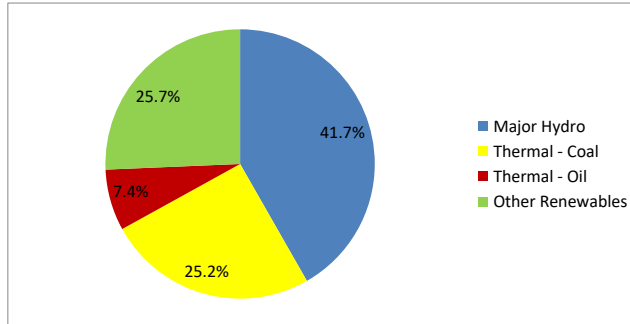
Daily Electricity Generation & Cost Estimation Report

30th July 2024



Daily Generation Mix - 30th July 2024

Plant Type	Generation (GWh)	Percentage
Major Hydro	19.84	41.7%
Thermal - Coal	12.00	25.2%
Thermal - Furnace Oil	0.83	1.7%
Thermal - Diesel	0.00	0.0%
Thermal - Naphtha	2.67	5.6%
Wind - CEB	1.53	3.2%
Wind - IPP	1.66	3.5%
Solar - IPP - Ground Mounted	0.58	1.2%
Solar - Roof Top	2.17	4.6%
Mini Hydro	6.00	12.6%
Municipal Solid Waste	0.26	0.5%
Total	47.53	



Note – Estimated generation from roof top solar, non-telemetered solar and mini hydro plants has been included in the above figures

Estimated Generation Cost : 30th July 2024

Plant Type	Energy Cost (Mn LKR)	Non Fuel Energy Cost (Mn LKR)	Capacity Cost (Mn LKR)	Total Cost of Generation (Mn LKR)	Energy Cost per Unit (LKR/kWh)	Non fuel Energy Cost per Unit (LKR/kWh)	Capacity Charge per Unit (LKR/kWh)	Cost of Electricity per Unit (LKR/kWh)
Major Hydro	0.0	0.0	36.3	36.3	0.00	0.00	1.83	1.83
Thermal - Coal	233.8	27.5	40.7	302.0	19.49	2.29	3.40	25.17
Thermal - Furnace Oil	36.1	9.4	51.2	96.7	43.45	11.30	61.73	116.48
Thermal - Diesel	0.0	1.5	19.6	21.1	0.00	0.00	0.00	0.00
Thermal - Naphtha	142.0	1.9	3.2	147.1	53.25	0.72	1.20	55.17
Wind - CEB	0.0	0.0	20.8	20.8	0.00	0.00	13.59	13.59
Wind - IPP	26.8	0.0	0.0	26.8	16.12	0.00	0.00	16.12
Solar - IPP - Ground Mounted	11.3	0.0	0.0	11.3	19.50	0.00	0.00	19.50
Solar - Roof Top	54.1	0.0	0.0	54.1	24.92	0.00	0.00	24.92
Mini Hydro	87.7	0.0	0.0	87.7	14.61	0.00	0.00	14.61
Municipal Solid Waste	10.1	0.0	0.0	10.1	39.30	0.00	0.00	39.30
Total	601.7	40.2	172.0	813.8	12.66	0.85	3.62	17.12

Note -

Start/Stop costs has been excluded in the calculation

Sobadhanvi plant is currently in the testing stage; hence, generation cost has not been considered.

Capacity cost is based on the approved BST submission.

Unit Cost of Generation for the day : 17.12 LKR/kWh
Total Generation Cost for the day: 813.84 Mn LKR

Fuel Prices

(as at 1st June 2024)

	Price (LKR/Liter or LKR/kg)
Furnace	181.00
Coal	47.47
Naphtha	197.60
Auto Diesel	317.00

Scheduled (Day Ahead) Generation Mix - 30th July 2024 (Excluding generation from non telemetered power plants)

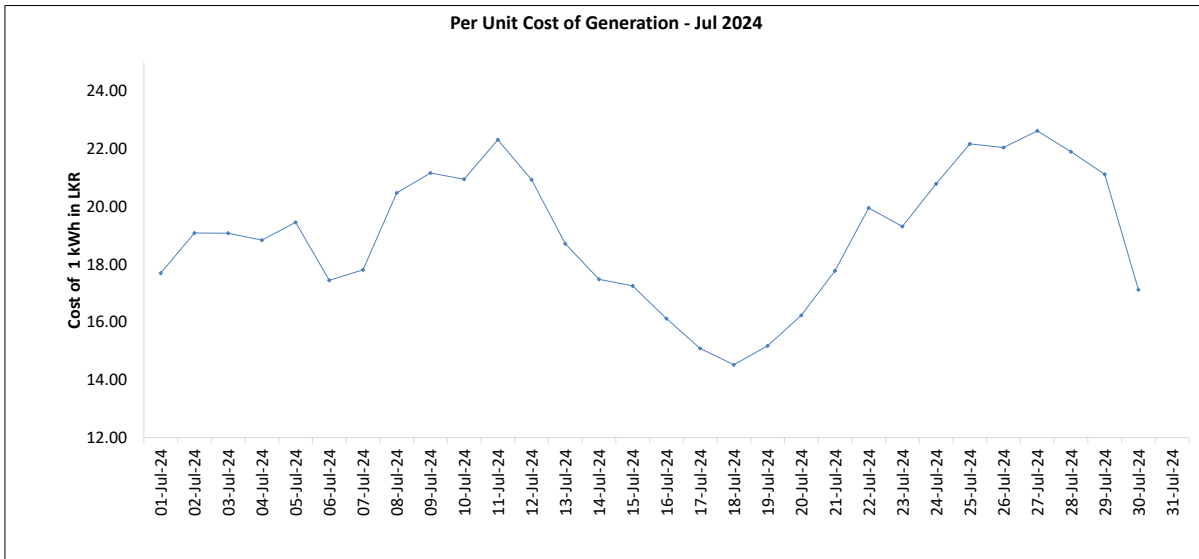
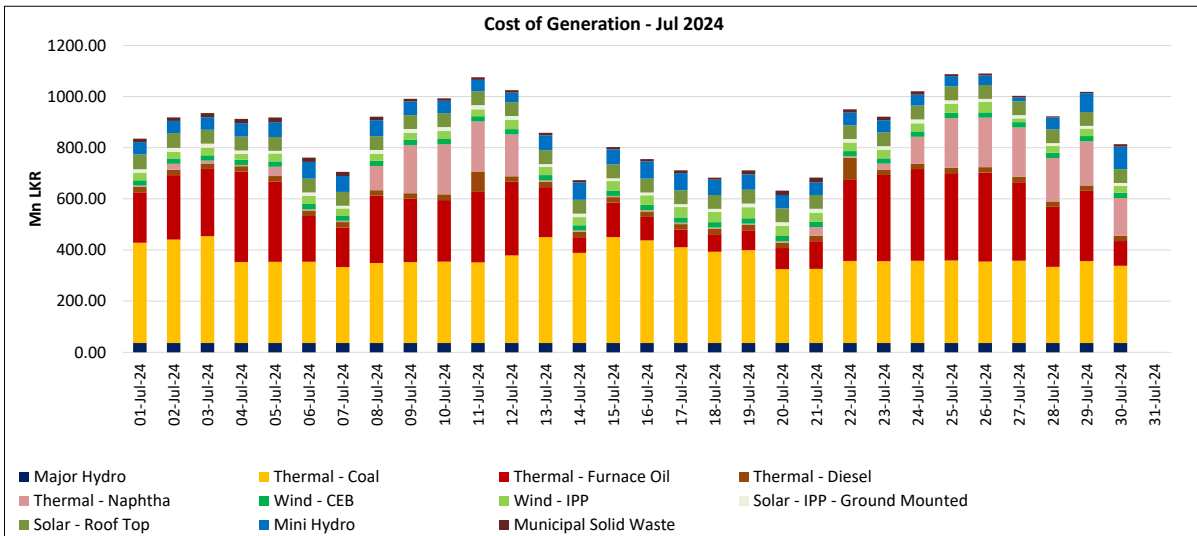
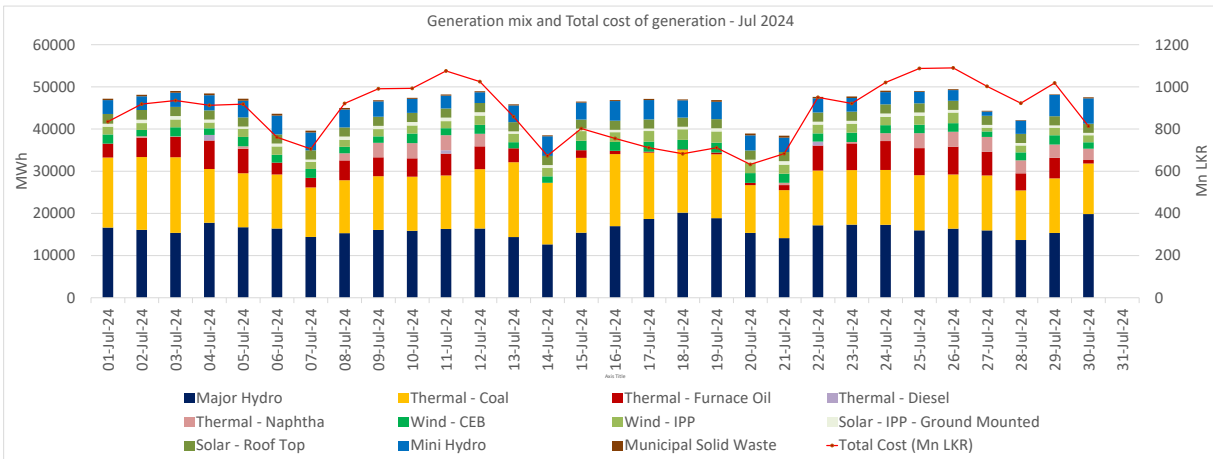
Plant Type	Generation (GWh)	Percentage
Major Hydro	19.4	43%
Thermal - Coal	13.0	29%
Thermal - Furnace Oil	2.7	6%
Thermal - Diesel	0.0	0%
Thermal - Naphtha	3.6	8%
Wind - CEB	2.97	7%
Wind - IPP		
Solar	0.62	1%
Mini Hydro	2.60	6%
Total	44.82	

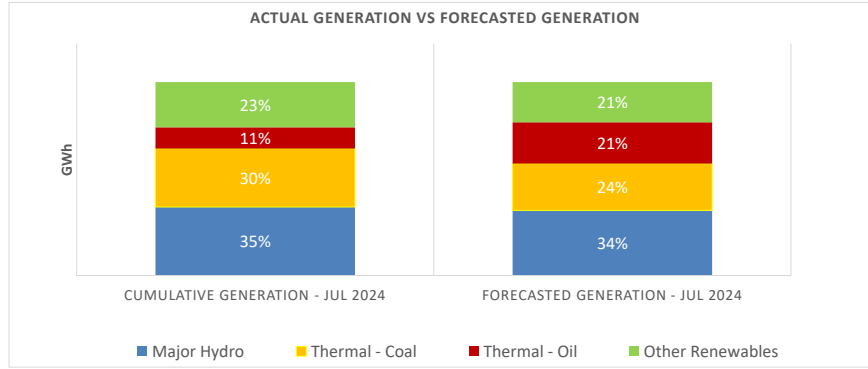
Estimated Generation Cost for the Scheduled Dispatch (Excluding non telemetered NCRE plants) **844.42 Mn LKR**

Actual Generation Mix - 30th July 2024 (Excluding generation from non telemetered power plants)

Plant Type	Generation (GWh)	Percentage
Major Hydro	19.8	48%
Thermal - Coal	12.0	29%
Thermal - Furnace Oil	0.8	2%
Thermal - Diesel	0.0	0%
Thermal - Naphtha	2.7	7%
Wind - CEB	1.5	4%
Wind - IPP	1.7	4%
Solar	0.6	1%
Mini Hydro	1.8	4%
Total	40.93	

Estimated Generation Cost for the Actual Dispatch (Excluding non telemetered NCRE plants) **688.80 Mn LKR**





	Cumulative Generation - Jul 2024 [GWh]	Forecasted Generation - Jul 2024 [GWh]
Major Hydro	489	486
Thermal - Coal	417	350
Thermal - Oil	152	308
Other Renewables	323	300
Total	1381	1444

Forecasted Generation - SDDP JUL 2024

Estimated Cost of Generation - Jul 2024 (Mn LKR)

Major Hydro	1089.84 Mn LKR
Thermal - Coal	10168.87 Mn LKR
Thermal - Furnace Oil	6535.41 Mn LKR
Thermal - Diesel	756.34 Mn LKR
Thermal - Naphtha	2205.82 Mn LKR
Wind - CEB	624.82 Mn LKR
Wind - IPP	954.29 Mn LKR
Solar - IPP - Ground Mounted	400.82 Mn LKR
Solar - Roof Top	1629.62 Mn LKR
Mini Hydro	1607.49 Mn LKR
Municipal Solid Waste	355.33 Mn LKR
Total Generation Cost	26,328.65 Mn LKR

Generation Energy Cost (Jul) 19,963.53 Mn LKR

*Generation Capacity Cost (Jul) 5,159.10 Mn LKR

Other Cost (Jul) 1,206.03 Mn LKR

Average Unit Cost of Generation (Jul) 19.07 LKR/kWh

Note -

* Capacity cost is based on the approved BST submission.