



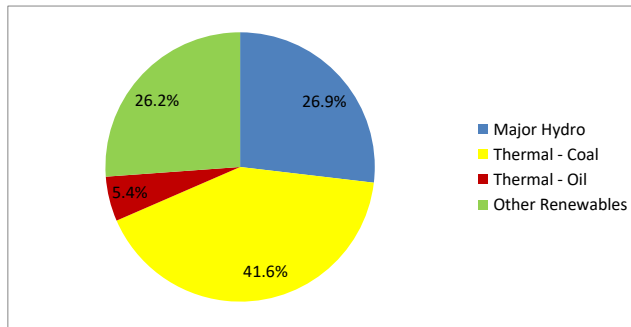
Daily Electricity Generation & Cost Estimation Report

21st August 2024



Daily Generation Mix -21st August 2024

Plant Type	Generation (GWh)	Percentage
Major Hydro	12.18	26.9%
Thermal - Coal	18.88	41.6%
Thermal - Furnace Oil	2.44	5.4%
Thermal - Diesel	0.00	0.0%
Thermal - Naphtha	0.00	0.0%
Wind - CEB	2.20	4.8%
Wind - IPP	1.65	3.6%
Solar - IPP - Ground Mounted	0.47	1.0%
Solar - Roof Top	1.92	4.2%
Mini Hydro	5.40	11.9%
Municipal Solid Waste	0.23	0.5%
Total	45.36	



Note – Estimated generation from roof top solar, non-telemetered solar and mini hydro plants has been included in the above figures

Estimated Generation Cost : 21st Aug 2024

Plant Type	Energy Cost (Mn LKR)	Non Fuel Energy Cost (Mn LKR)	Capacity Cost (Mn LKR)	Total Cost of Generation (Mn LKR)	Energy Cost per Unit (LKR/kWh)	Non fuel Energy Cost per Unit (LKR/kWh)	Capacity Charge per Unit (LKR/kWh)	Cost of Electricity per Unit (LKR/kWh)
Major Hydro	0.0	0.0	36.3	36.3	0.00	0.00	2.98	2.98
Thermal - Coal	367.9	27.5	41.8	437.2	19.49	1.45	2.22	23.16
Thermal - Furnace Oil	98.7	9.4	51.2	159.3	40.54	3.85	21.04	65.43
Thermal - Diesel	0.0	1.5	19.8	21.2	0.00	0.00	0.00	0.00
Thermal - Naphtha	0.0	1.9	3.2	5.1	0.00	0.00	0.00	0.00
Wind - CEB	0.0	0.0	20.8	20.8	0.00	0.00	9.47	9.47
Wind - IPP	26.5	0.0	0.0	26.5	16.12	0.00	0.00	16.12
Solar - IPP - Ground Mounted	9.2	0.0	0.0	9.2	19.50	0.00	0.00	19.50
Solar - Roof Top	47.8	0.0	0.0	47.8	24.92	0.00	0.00	24.92
Mini Hydro	78.8	0.0	0.0	78.8	14.61	0.00	0.00	14.61
Municipal Solid Waste	9.0	0.0	0.0	9.0	39.30	0.00	0.00	39.30
Total	638.0	40.2	173.2	851.4	14.07	0.89	3.82	18.77

Note -

Start/Stop costs has been excluded in the calculation

Sobadhanvi plant is currently in the testing stage; hence, generation cost has not been considered.

Capacity cost is based on the approved BST submission.

Unit Cost of Generation for the day : **18.77 LKR/kWh**
 Total Generation Cost for the day: **851.40 Mn LKR**

Fuel Prices

(as at 1st June 2024)

	Price (LKR/Liter or LKR/kg)
Furnace	181.00
Coal	47.47
Naphtha	197.60
Auto Diesel	317.00

Scheduled (Day Ahead) Generation Mix - 21st Aug 2024 (Excluding generation from non telemetered power plants)

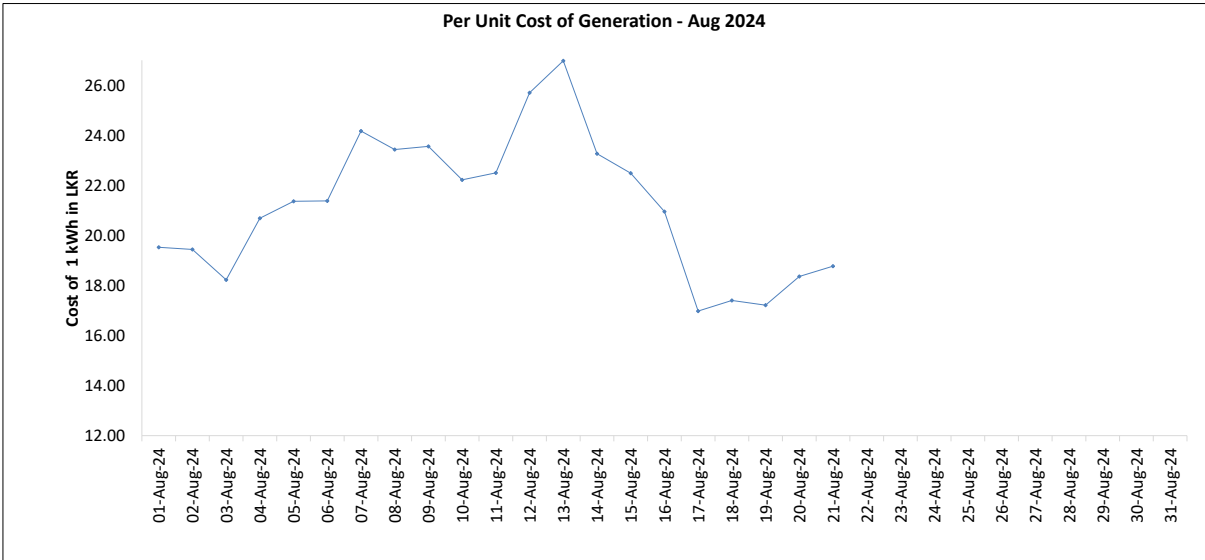
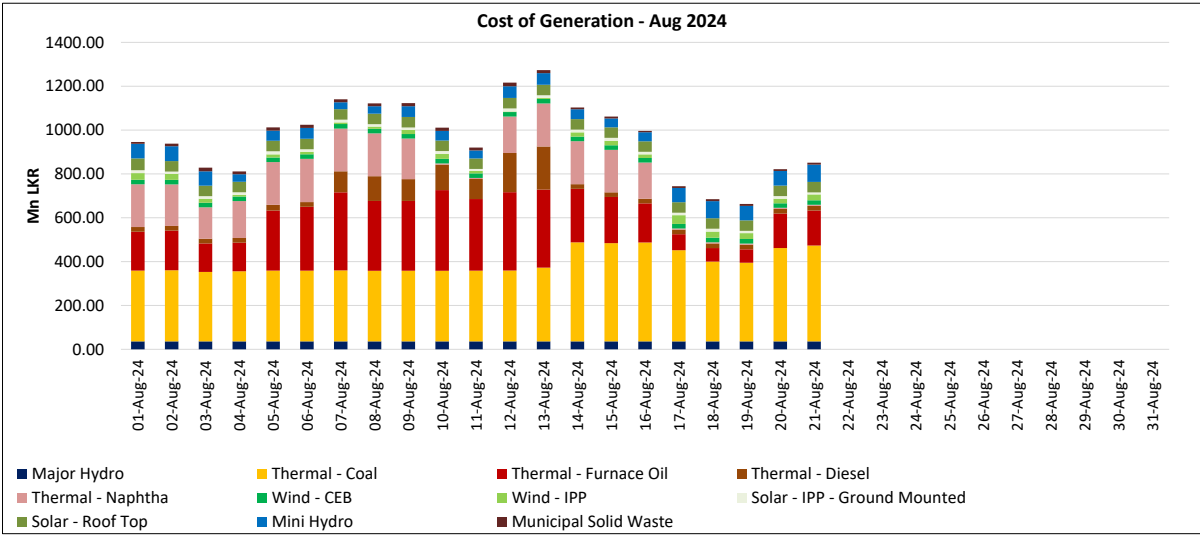
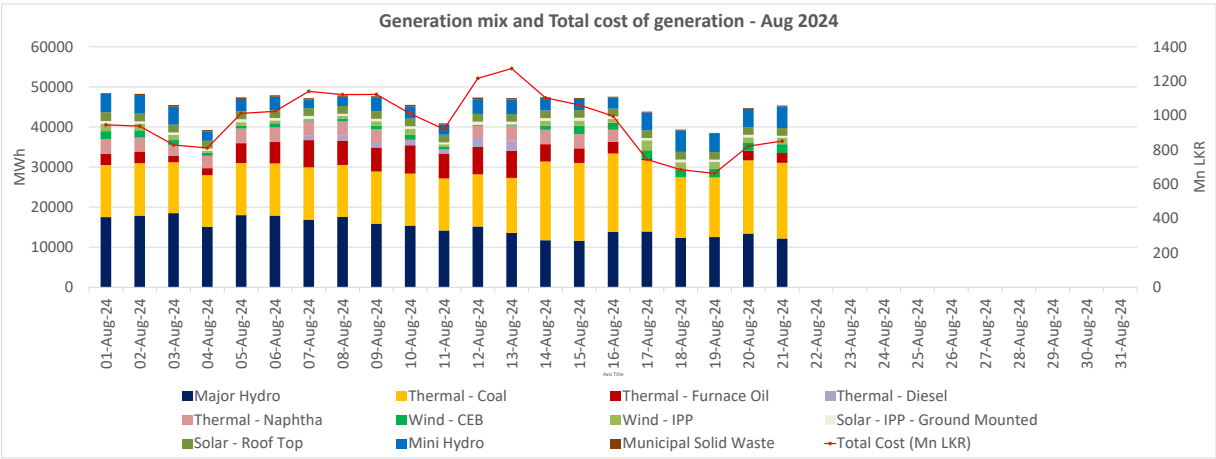
Plant Type	Generation (GWh)	Percentage
Major Hydro	13.3	30%
Thermal - Coal	19.4	44%
Thermal - Furnace Oil	3.1	7%
Thermal - Diesel	0.0	0%
Thermal - Naphtha	0.0	0%
Wind - CEB	3.9	9%
Wind - IPP		
Solar	0.5	1%
Mini Hydro	3.7	8%
Total	43.87	

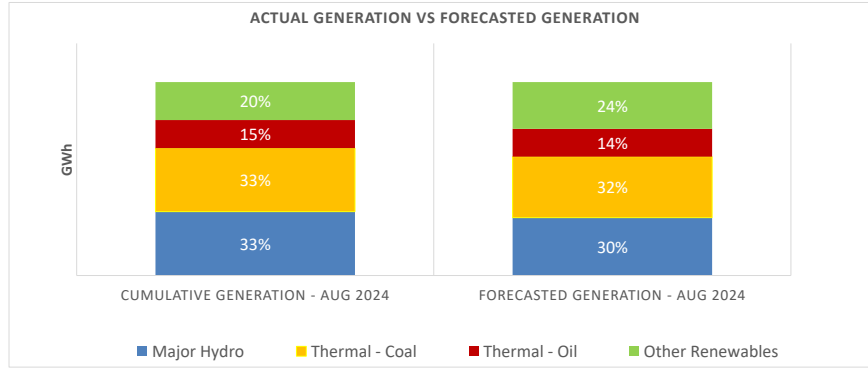
Estimated Generation Cost for the Scheduled Dispatch (Excluding non telemetered NCRE plants) **813.85 Mn LKR**

Actual Generation Mix - 21st Aug 2024 (Excluding generation from non telemetered power plants)

Plant Type	Generation (GWh)	Percentage
Major Hydro	12.2	29%
Thermal - Coal	18.9	45%
Thermal - Furnace Oil	2.4	6%
Thermal - Diesel	0.0	0%
Thermal - Naphtha	0.0	0%
Wind - CEB	2.2	5%
Wind - IPP	1.6	4%
Solar	0.5	1%
Mini Hydro	4.4	10%
Total	42.17	

Estimated Generation Cost for the Actual Dispatch (Excluding non telemetered NCRE plants) **779.40 Mn LKR**





	Cumulative Generation - Aug 2024 [GWh]	Forecasted Generation - Aug 2024 [GWh]
Major Hydro	315	433
Thermal - Coal	313	456
Thermal - Oil	139	208
Other Renewables	187	350
Total	954	1447

Forecasted Generation - SDDP Aug 2024

Estimated Cost of Generation - Aug 2024 (Mn LKR)

Major Hydro	762.89 Mn LKR
Thermal - Coal	7550.71 Mn LKR
Thermal - Furnace Oil	4730.19 Mn LKR
Thermal - Diesel	1193.23 Mn LKR
Thermal - Naphtha	2617.05 Mn LKR
Wind - CEB	437.37 Mn LKR
Wind - IPP	382.29 Mn LKR
Solar - IPP - Ground Mounted	251.22 Mn LKR
Solar - Roof Top	1010.91 Mn LKR
Mini Hydro	1112.90 Mn LKR
Municipal Solid Waste	243.88 Mn LKR
Total Generation Cost	20,292.64 Mn LKR

Generation Energy Cost (Aug) 15,811.54 Mn LKR

*Generation Capacity Cost (Aug) 3,636.87 Mn LKR

Other Cost (Aug) 844.22 Mn LKR

Average Unit Cost of Generation (Aug) 21.26 LKR/kWh

Note -

* Capacity cost is based on the approved BST submission.