



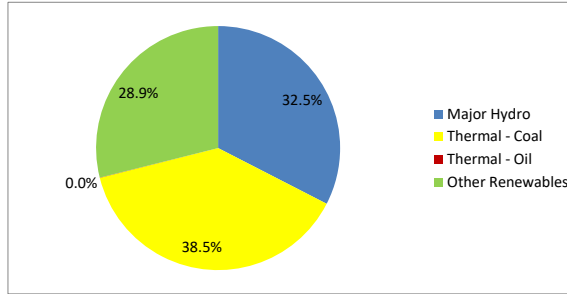
Daily Electricity Generation & Cost Estimation Report

19th August 2024



Daily Generation Mix -19th August 2024

Plant Type	Generation (GWh)	Percentage
Major Hydro	12.54	32.5%
Thermal - Coal	14.84	38.5%
Thermal - Furnace Oil	0.01	0.0%
Thermal - Diesel	0.00	0.0%
Thermal - Naphtha	0.00	0.0%
Wind - CEB	2.27	5.9%
Wind - IPP	1.66	4.3%
Solar - IPP - Ground Mounted	0.53	1.4%
Solar - Roof Top	1.92	5.0%
Mini Hydro	4.52	11.7%
Municipal Solid Waste	0.23	0.6%
Total	38.52	



Note - Estimated generation from roof top solar, non-telemetered solar and mini hydro plants has been included in the above figures

Estimated Generation Cost : 19th Aug 2024

Plant Type	Energy Cost (Mn LKR)	Non Fuel Energy Cost (Mn LKR)	Capacity Cost (Mn LKR)	Total Cost of Generation (Mn LKR)	Energy Cost per Unit (LKR/kWh)	Non fuel Energy Cost per Unit (LKR/kWh)	Capacity Charge per Unit (LKR/kWh)	Cost of Electricity per Unit (LKR/kWh)
Major Hydro	0.0	0.0	36.3	36.3	0.00	0.00	2.90	2.90
Thermal - Coal	289.2	27.5	41.8	358.5	19.49	1.85	2.82	24.16
Thermal - Furnace Oil	0.5	9.4	51.2	61.1	40.28	781.59	4269.57	5091.44
Thermal - Diesel	0.0	1.5	19.8	21.2	0.00	0.00	0.00	0.00
Thermal - Naphtha	0.0	1.9	3.2	5.1	0.00	0.00	0.00	0.00
Wind - CEB	0.0	0.0	20.8	20.8	0.00	0.00	9.17	9.17
Wind - IPP	26.8	0.0	0.0	26.8	16.12	0.00	0.00	16.12
Solar - IPP - Ground Mounted	10.3	0.0	0.0	10.3	19.50	0.00	0.00	19.50
Solar - Roof Top	47.8	0.0	0.0	47.8	24.92	0.00	0.00	24.92
Mini Hydro	66.0	0.0	0.0	66.0	14.61	0.00	0.00	14.61
Municipal Solid Waste	8.9	0.0	0.0	8.9	39.30	0.00	0.00	39.30
Total	449.6	40.2	173.2	663.0	11.67	1.04	4.50	17.21

Note -

Start/Stop costs has been excluded in the calculation

Sobadhavi plant is currently in the testing stage; hence, generation cost has not been considered.

Capacity cost is based on the approved BST submission.

Unit Cost of Generation for the day : **17.21 LKR/kWh**
 Total Generation Cost for the day: **663.01 Mn LKR**

Fuel Prices

(as at 1st June 2024)

	Price (LKR/Liter or LKR/kg)
Furnace	181.00
Coal	47.47
Naphtha	197.60
Auto Diesel	317.00

Scheduled (Day Ahead) Generation Mix - 19th Aug 2024 (Excluding generation from non telemetered power plants)

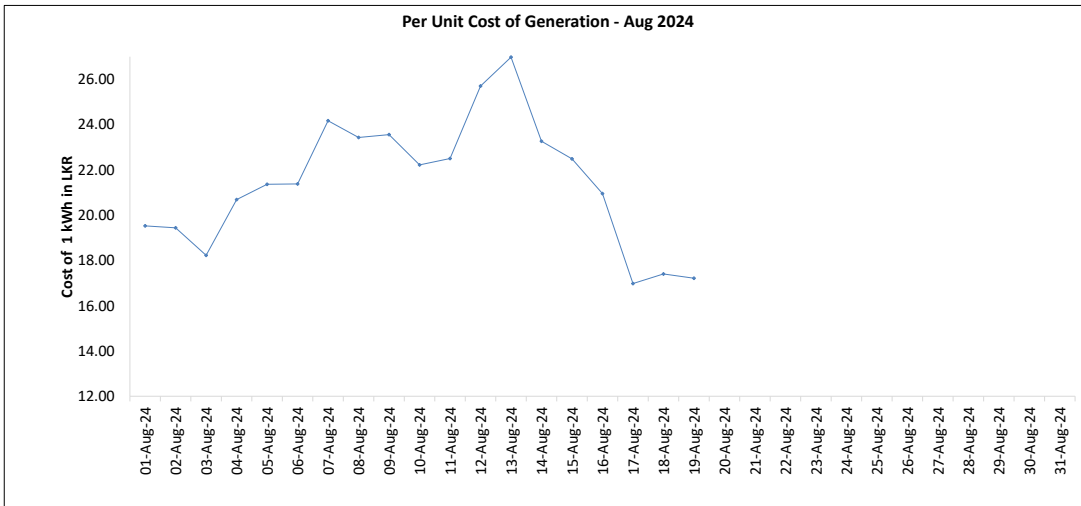
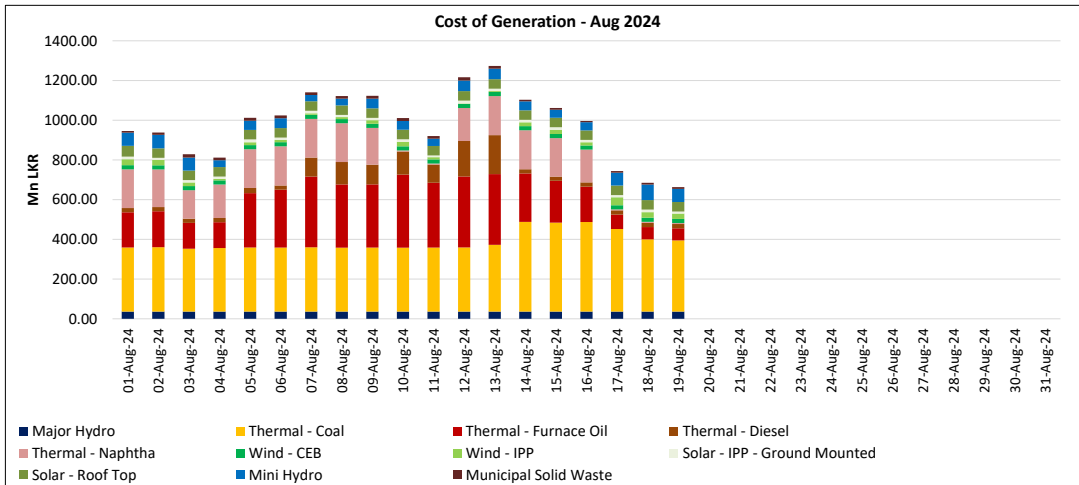
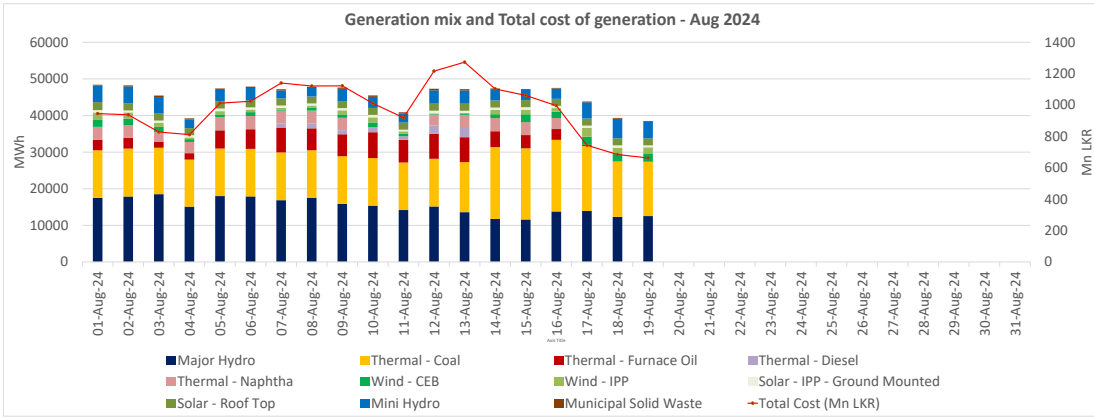
Plant Type	Generation (GWh)	Percentage
Major Hydro	14.0	39%
Thermal - Coal	13.3	37%
Thermal - Furnace Oil	0.0	0%
Thermal - Diesel	0.0	0%
Thermal - Naphtha	0.0	0%
Wind - CEB	3.7	10%
Wind - IPP	0.5	1%
Solar	4.2	12%
Mini Hydro		
Total	35.67	

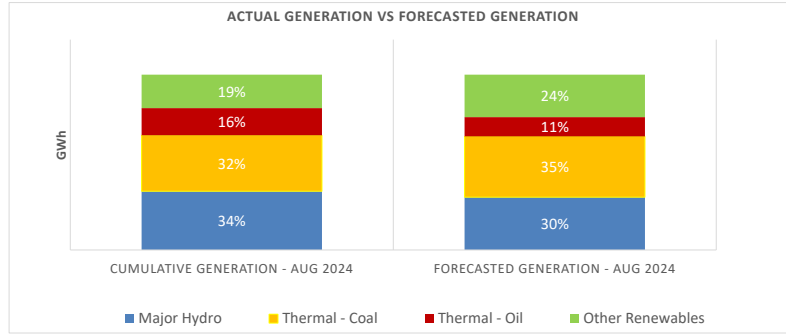
Estimated Generation Cost for the Scheduled Dispatch (Excluding non telemetered NCRE plants) **574.07 Mn LKR**

Actual Generation Mix - 19th Aug 2024 (Excluding generation from non telemetered power plants)

Plant Type	Generation (GWh)	Percentage
Major Hydro	12.5	35%
Thermal - Coal	14.8	42%
Thermal - Furnace Oil	0.0	0%
Thermal - Diesel	0.0	0%
Thermal - Naphtha	0.0	0%
Wind - CEB	2.3	6%
Wind - IPP	1.7	5%
Solar	0.5	1%
Mini Hydro	3.7	10%
Total	35.51	

Estimated Generation Cost for the Actual Dispatch (Excluding non telemetered NCRE plants) **593.58 Mn LKR**





	Cumulative Generation - Aug 2024 [GWh]	Forecasted Generation - Aug 2024 [GWh]
Major Hydro	290	436
Thermal - Coal	276	502
Thermal - Oil	134	160
Other Renewables	165	350
Total	864	1447

Forecasted Generation - SDDP JUL 2024

Estimated Cost of Generation - Aug 2024 (Mn LKR)

Major Hydro	690.23 Mn LKR
Thermal - Coal	6688.09 Mn LKR
Thermal - Furnace Oil	4413.58 Mn LKR
Thermal - Diesel	1150.81 Mn LKR
Thermal - Naphtha	2606.83 Mn LKR
Wind - CEB	395.72 Mn LKR
Wind - IPP	335.07 Mn LKR
Solar - IPP - Ground Mounted	230.20 Mn LKR
Solar - Roof Top	915.23 Mn LKR
Mini Hydro	967.09 Mn LKR
Municipal Solid Waste	227.02 Mn LKR
Total Generation Cost	18,619.87 Mn LKR

Generation Energy Cost (Aug) 14,565.55 Mn LKR

*Generation Capacity Cost (Aug) 3,290.51 Mn LKR

Other Cost (Aug) 763.82 Mn LKR

Average Unit Cost of Generation (Aug) 21.55 LKR/kWh

Note -

* Capacity cost is based on the approved BST submission.