

Generation and Reservoirs Statistics

April 9, 2024



PUBLIC UTILITIES COMMISSION OF SRI LANKA

1. Daily Generation Mix in MWh

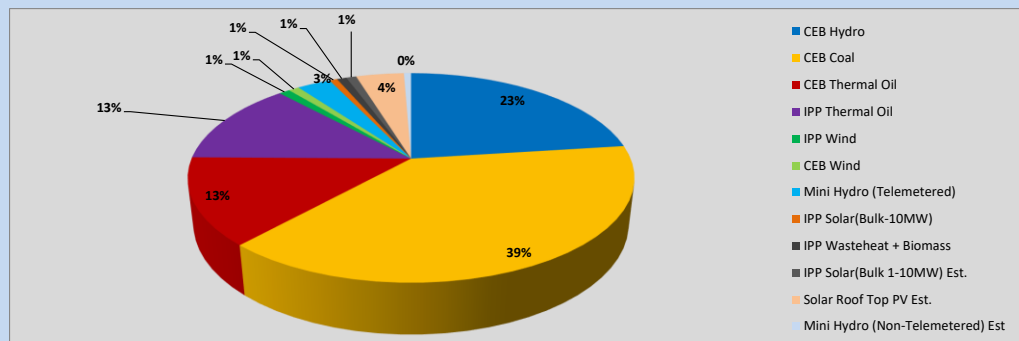


Table 01

	Generation (MWh)
CEB Hydro	11,517
CEB Coal	19,433
CEB Thermal Oil	6,740
IPP Thermal Oil	6,451
IPP Wind	475
CEB Wind	461
Mini Hydro (Telemetered)	1,458
IPP Solar (Bulk)	340
IPP Waste heat + Biomass	413
Total Generation (Excluding estimated figures)	47,288
* Estimated unserved energy	0
* Estimated Mini Hydro (Non telemetered)	311
* Estimated IPP Solar PV (Bulk 1-10MW)	436
* Estimated Solar Roof Top PV	2080
Total Generation (Including estimated figures)	50,115

* Estimated figures of CEB generation report

Table 02

	Installed Capacity (MW)
CEB Hydro	1644
CEB Coal	810
CEB Thermal Oil	773.1
IPP Thermal Oil (West Coast)	270
IPP Wind	163
CEB Wind	100
Mini Hydro	422
IPP Waste heat + Biomass	54
IPP Solar	137
Rooftop Solar (Ordinary)	293
Rooftop Solar (LT Bulk)	272
Rooftop Solar (HT Bulk)	74

Data Source - Monthly Review Report [Nov-2023]

2. Cumulative Dispatch

Following data excludes the contribution from roof top solar, non telemetered solar and mini hydro plants

Table 03 - Current Month

Category	Dispatch (GWh)	
CEB Hydro	104	23.53%
CEB Coal	175	39.48%
CEB Thermal Oil	63	14.18%
IPP Thermal	53	11.92%
SPP Wind	2	0.43%
CEB Wind	2	0.37%
Mini Hydro *	16	3.59%
IPP Solar *	26	5.83%
IPP Waste heat + BMP	3	0.67%
Total	443	

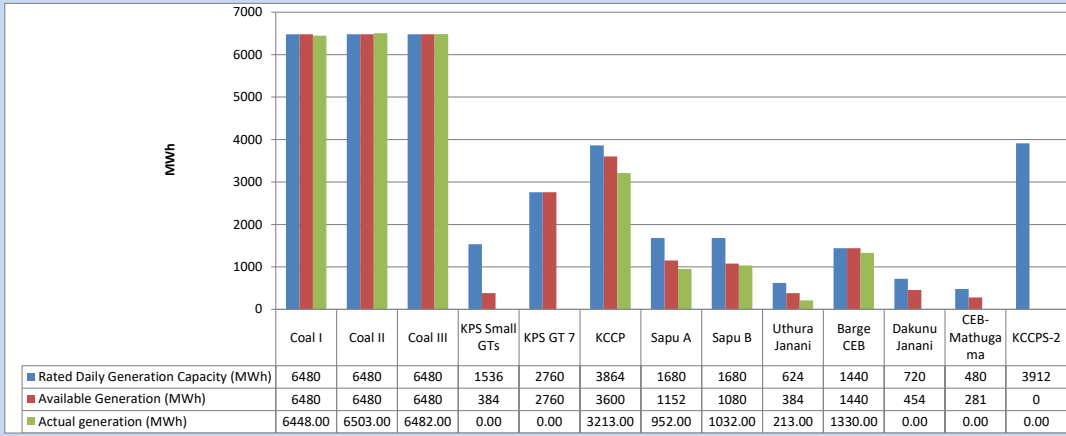
Table 04 - Current Year

Category	Dispatch (GWh)	
CEB Hydro	1,368	30.57%
CEB Coal	1,652	36.92%
CEB Thermal Oil	442	9.88%
IPP Thermal	384	8.59%
SPP Wind	48	1.08%
CEB Wind	57	1.27%
Mini Hydro *	251	5.61%
IPP Solar *	235	5.26%
IPP Waste heat	36	0.81%
Total	4,473	

*Including estimated contribution from non telemetered plants

3. CEB owned Thermal Plant Dispatch

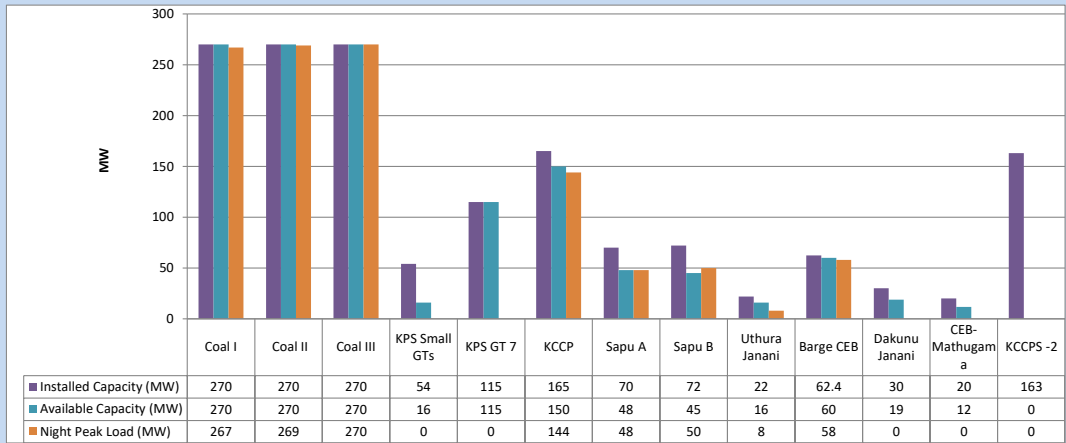
April 9, 2024



Available Generation is estimated based on plant availability at 6.00am on

April 10, 2024

4. CEB owned Thermal Plant Loading at the Night Peak

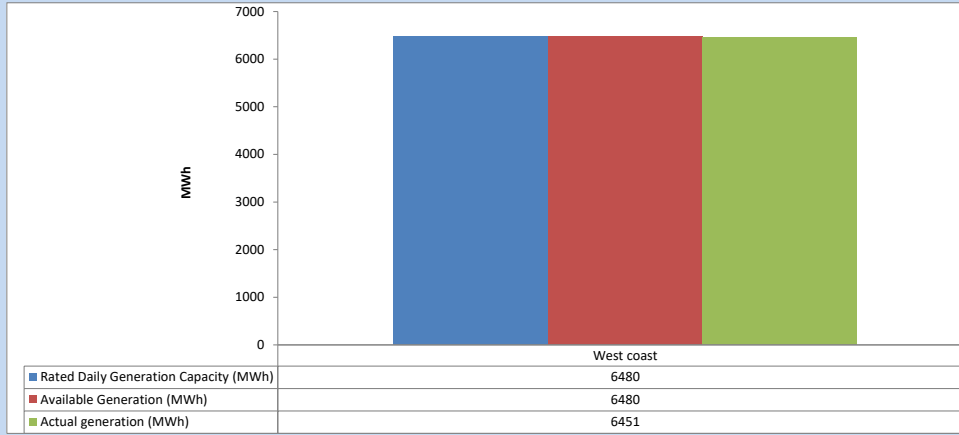


Plant availability is recorded at 6.00 am on

April 10, 2024

5. IPP owned Thermal Plant Dispatch

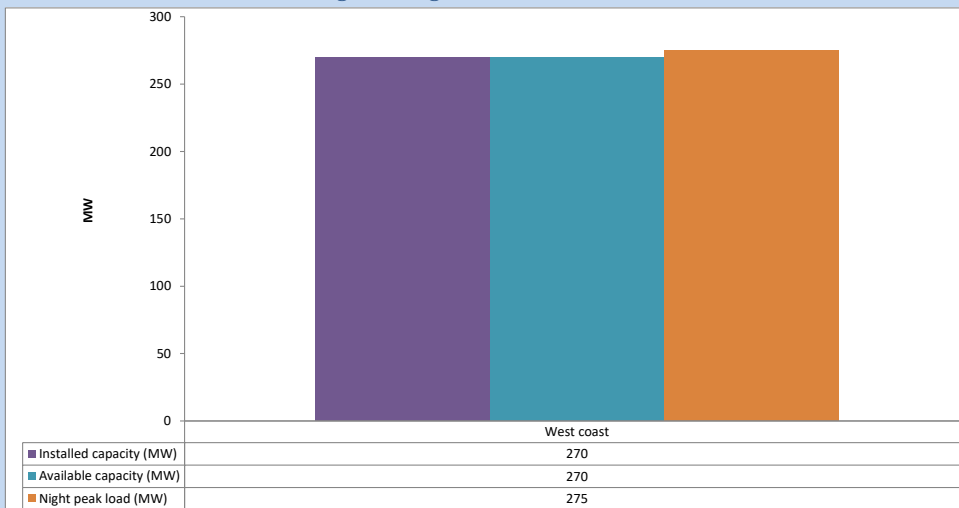
April 9, 2024



Available Generation is estimated based on plant availability at 6.00am on

April 10, 2024

6. IPP owned Thermal Plant Loading at the Night Peak

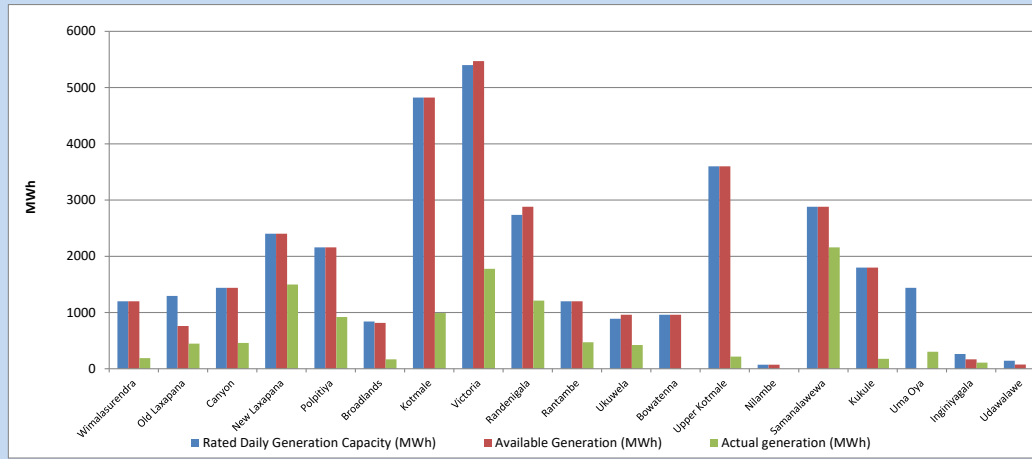


Plant availability is recorded at 6.00 am on

April 10, 2024

7. Major Hydro Plant Dispatch

April 9, 2024

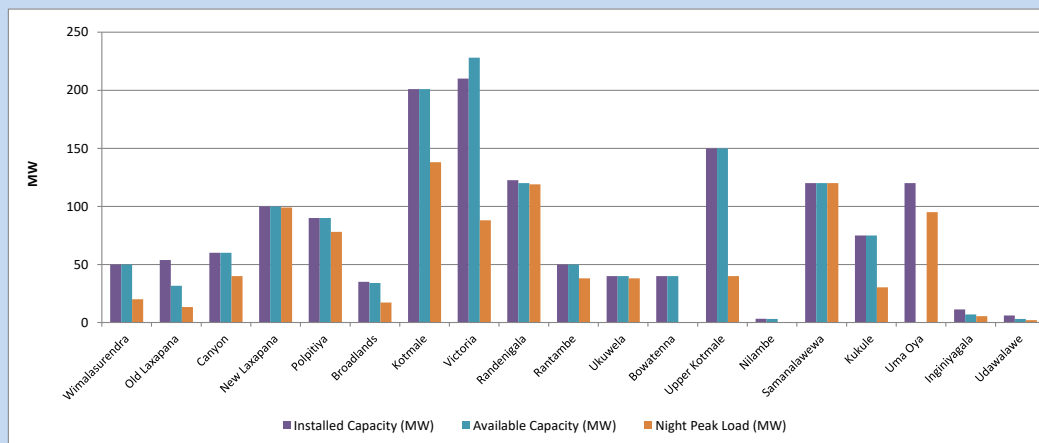


Available Generation is estimated based on plant availability at 6.00am on
Broadlands power plant is operating in the Commissioning Stage

April 10, 2024

8. Major Hydro Plant Loading at Night Peak

April 9, 2024



Plant availability is recorded at 6.00 am on
Broadlands power plant is operating in the Commissioning Stage

April 10, 2024

9. Summary of Major Plant performance

Table 05

Plant	Maximum Available Total Capacity	Plant Availability	Night peak Load	Plant Dispatch
	(MW)	(MW)	(MW)	(MWh)
Wimalasurendra	50	50	20	190
Old Laxapana	54	32	13	448
Canyon	60	60	40	458
New Laxapana	100	100	99	1,499
Polpitiya	90	90	78	920
Broadlands	35	34	17	167
Kotmale	201	201	138	990
Victoria	210	228	88	1,776
Randenigala	123	120	119	1,213
Rantambe	50	50	38	473
Ukuwela	40	40	38	422
Bowatenna	40	40	0	0
Upper Kotmale	150	150	40	216
Nilambe	3	3	0	0
Samanalawewa	120	120	120	2,158
Kukule	75	75	30	176
Uma Oya (Testing)	120	0	95	304
Inginiyagala	11	7	5	108
Udawalawe	6	3	2	0
Puttalam Coal I	270	270	267	6,448
Puttalam Coal II	270	270	269	6,503
Puttalam Coal III	270	270	270	6,482
KPS Small GTs	54	16	0	0
KPS GT 7	115	115	0	0
KCCP	165	150	144	3,213
Sapugaskanda A	70	48	48	952
Sapugaskanda B	72	45	50	1,032
Uthura Janani	22	16	8	213
Barge CEB	62	60	58	1,330
CEB-Hambantota	30	19	0	0
CEB-Mathugama	20	12	0	0
ACE Matara	24	0	0	0
Asia Power	50	0	0	0
KCCPS -2	163	0	0	0
West Coast	270	270	275	6,451
Nothern Power	36	0	0	0
ACE Embilipitiya	93	0	0	0
Total	3,594	2,963	2,535	47,289

Note-

Plant availability is the availability recorded at 6 am on

April 10, 2024

Installed Capacity is sourced from CEB Annual Report- 2022

10. Contribution to the Night Peak in MW

April 9, 2024

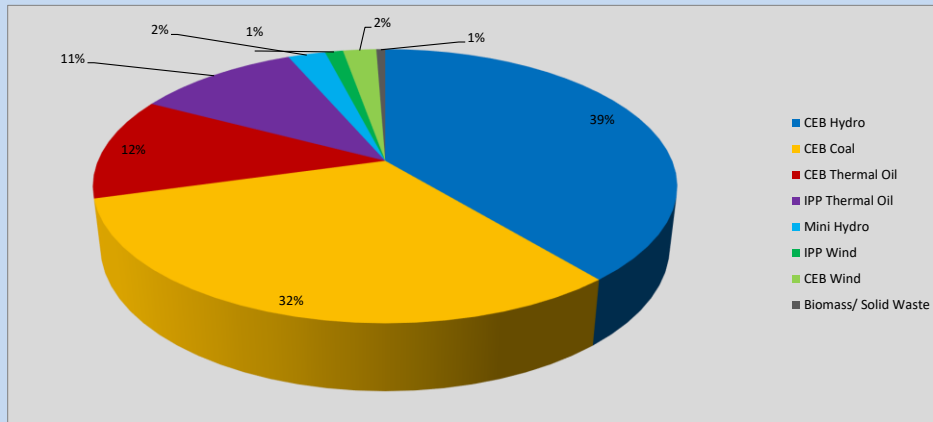


Table 06

CEB Hydro	993	MW
CEB Coal	806	MW
CEB Thermal Oil	308	MW
IPP Thermal Oil	275	MW
Mini Hydro (Telemetered)	63	MW
IPP Wind	30.5	MW
CEB Wind	56.1	MW
Biomass/ Solid Waste	15	MW

Recorded Peak Demand Data

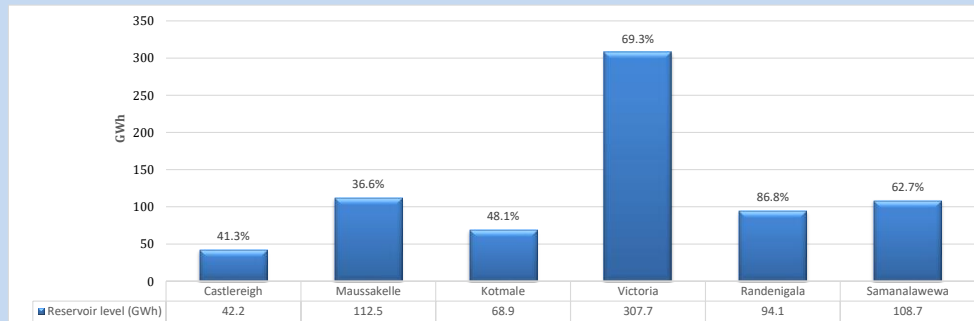
Table 07

Night Peak*	2,546	MW
Day Peak Maximum Demand	2,300	MW
Day Peak Minimum Demand	1,758	MW
Off Peak Minimum Demand	1,577	MW

Above figures are excluding contribution from roof top solar, non telemetered solar and mini hydro plants

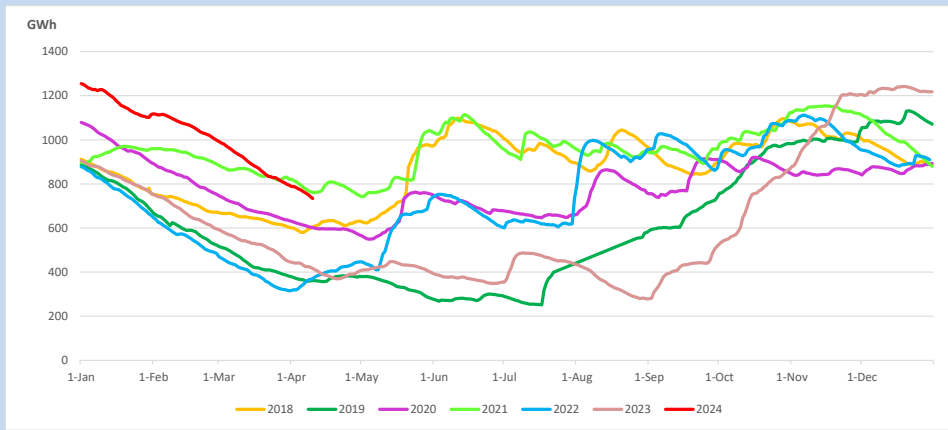
Reservoir Levels -

as at 06.00 Hr on April 10, 2024

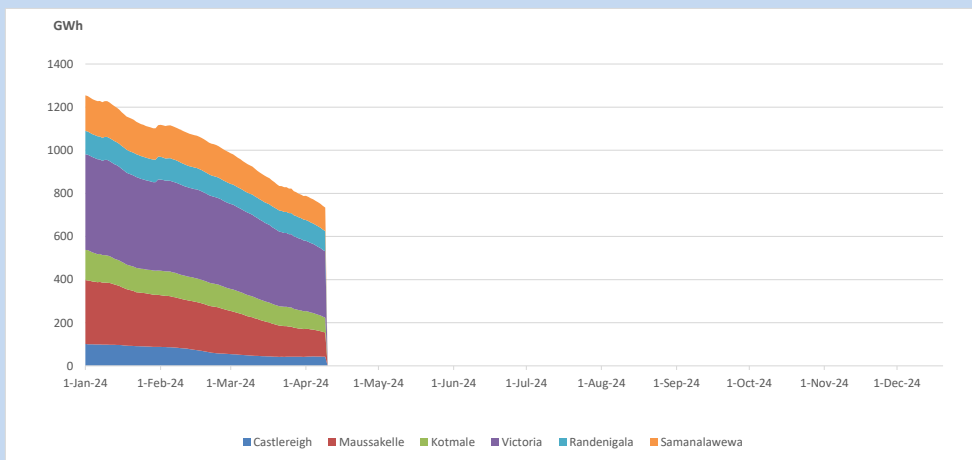


Total Reservoir Level 734.1 GWh
% of Total capacity 57.4%

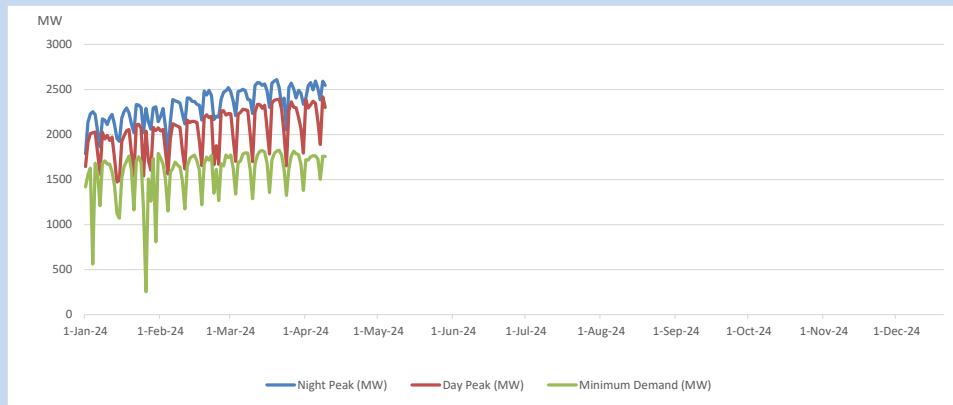
11. Comparison of Total Reservoir Storage Levels with Past Years



12. Variation of Major Hydro Reservoir Levels in the current year (GWh)



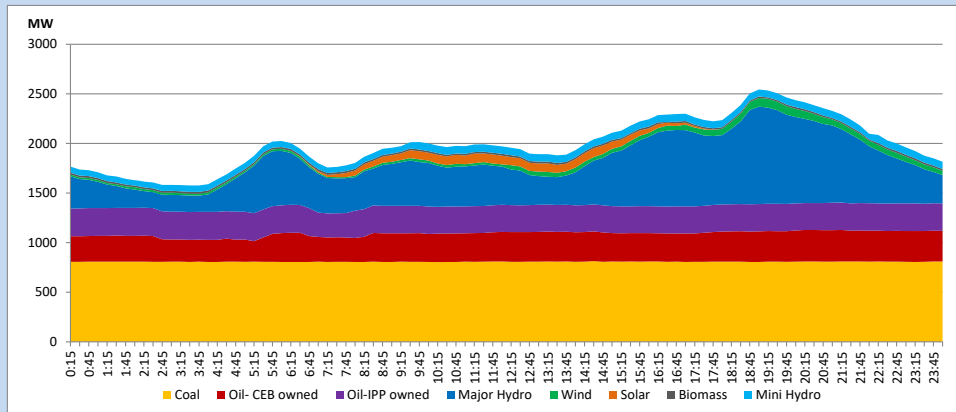
13. Variation of Demand during the current year



The above figures are excluding contribution from roof top solar, non telemetered solar and mini hydro plants

14. Daily Load Curve

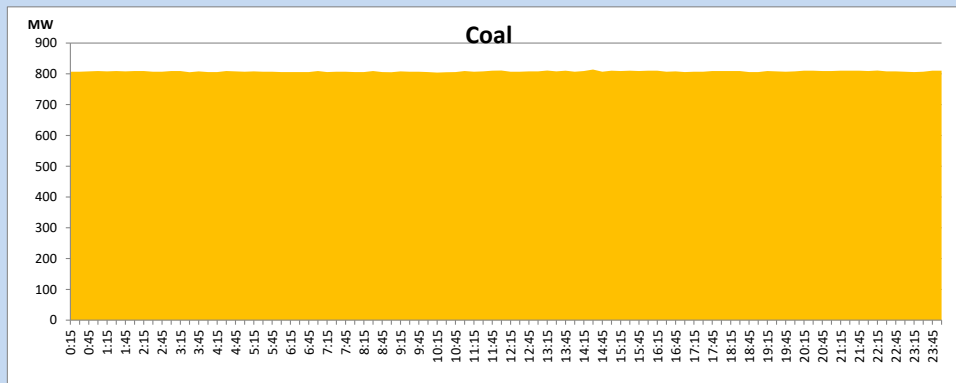
April 9, 2024



Solar and wind data is based on Telemetered Power Stations only

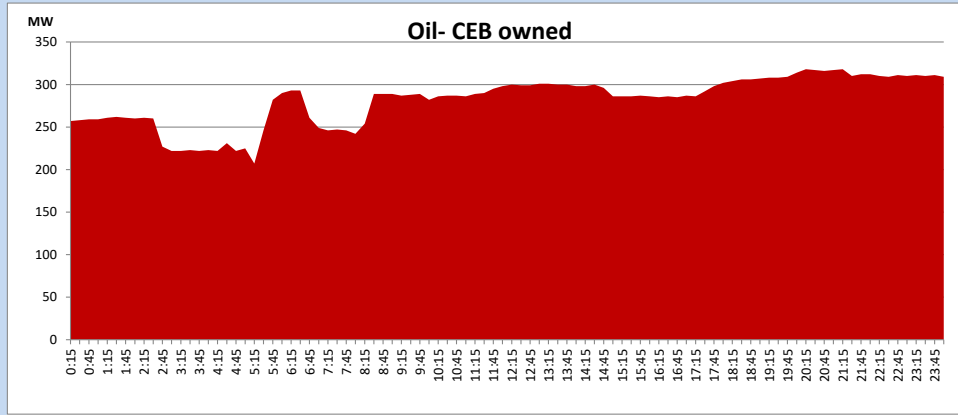
Coal Generation during

April 9, 2024



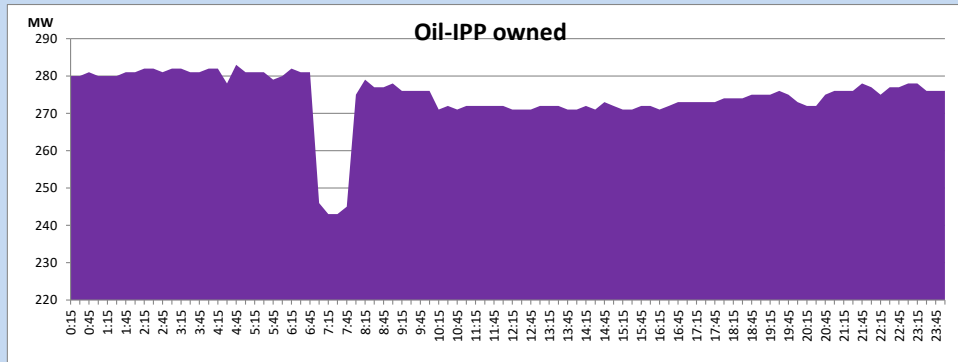
CEB Oil Plant Generation during

April 9, 2024



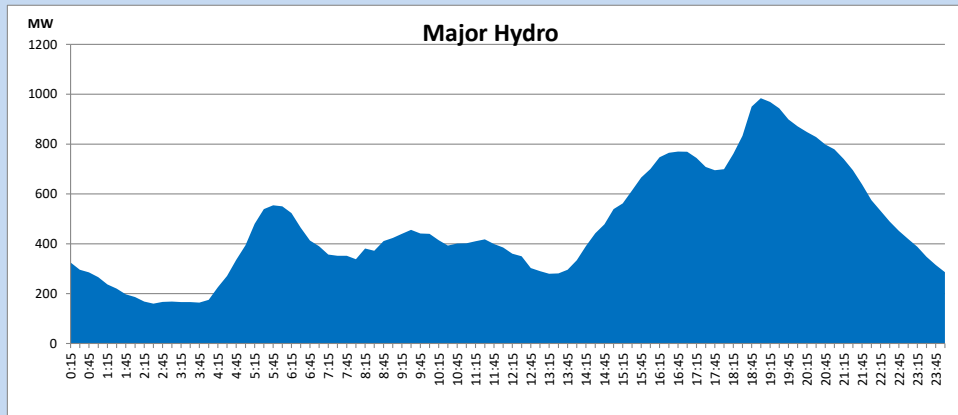
IPP Oil Plant Generation during

April 9, 2024



Major Hydro Generation during

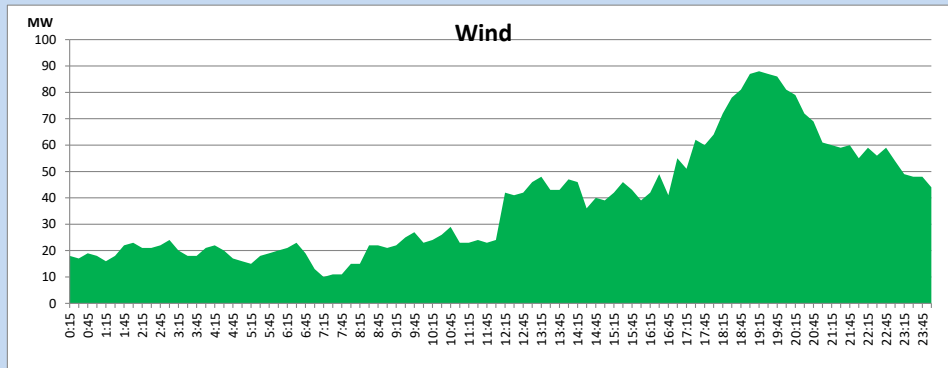
April 9, 2024



Wind Generation during

April 9, 2024

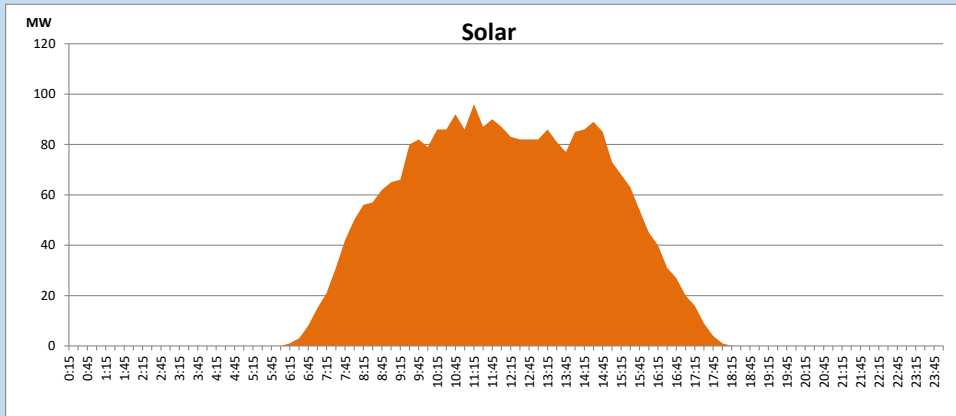
Based on Telemetered Power Stations only



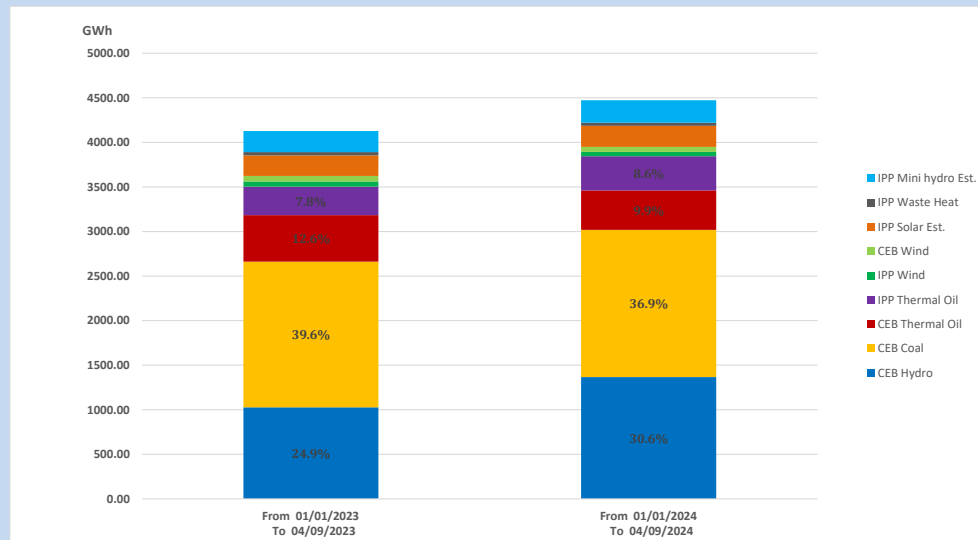
Solar Generation during

April 9, 2024

Based on Telemetered Power Stations only



15. Cumulative Dispatch Comparison with Last Year



Cumulative dispatch
 From 01/01/2023 To 04/09/2023
 From 01/01/2024 To 04/09/2024

4127 GWh
 4473 GWh

The above figures are including contribution from roof top solar, non telemetered solar and mini hydro plants)
 Unused energy due to power cuts has been excluded in 2023

Thermal Plant Fuel types

Table 08

Power Station	Primary Fuel
CEB Thermal	
Sapugaskanda 1	Heavy Fuel
Sapugaskanda 2	Heavy Fuel
Kelanitissa Small Gas Turbines	Auto Diesel
GT 7 - Kelanitissa	Auto Diesel
Kelanitissa CCY	Naphtha or Diesel
Lakvijaya 1	Coal
Lakvijaya 2	Coal
Lakvijaya 3	Coal
Uthuru Janani	Heavy Fuel
Barge CEB	Heavy Fuel
KCCPS -2	Auto Diesel

Power Station	Primary Fuel
Private Thermal	
West Coast	Auto Diesel / Heavy Fuel

Major Incidents reported during the day

April 9, 2024

1) Nil