

Generation and Reservoirs Statistics

April 8, 2024



PUBLIC UTILITIES COMMISSION OF SRI LANKA

1. Daily Generation Mix in MWh

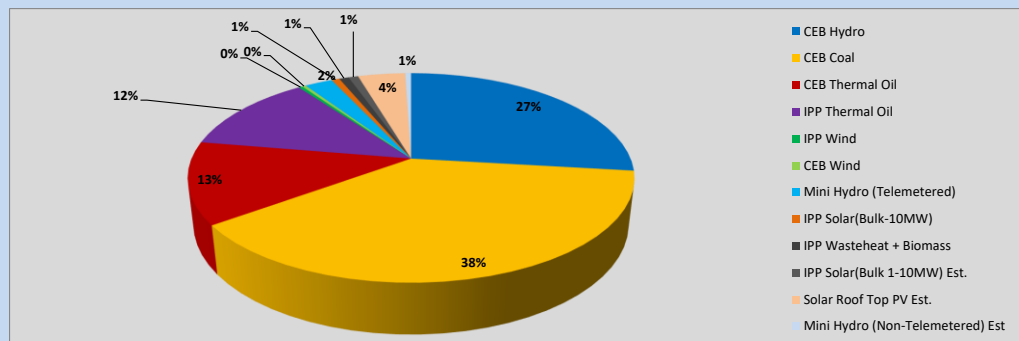


Table 01

	Generation (MWh)
CEB Hydro	13,660
CEB Coal	19,390
CEB Thermal Oil	6,442
IPP Thermal Oil	6,267
IPP Wind	173
CEB Wind	167
Mini Hydro (Telemetered)	1,221
IPP Solar (Bulk)	351
IPP Waste heat + Biomass	420
Total Generation (Excluding estimated figures)	48,091
* Estimated unserved energy	0
* Estimated Mini Hydro (Non telemetered)	260
* Estimated IPP Solar PV (Bulk 1-10MW)	428
* Estimated Solar Roof Top PV	2080
Total Generation (Including estimated figures)	50,859

* Estimated figures of CEB generation report

Table 02

	Installed Capacity (MW)
CEB Hydro	1644
CEB Coal	810
CEB Thermal Oil	773.1
IPP Thermal Oil (West Coast)	270
IPP Wind	163
CEB Wind	100
Mini Hydro	422
IPP Waste heat + Biomass	54
IPP Solar	137
Rooftop Solar (Ordinary)	293
Rooftop Solar (LT Bulk)	272
Rooftop Solar (HT Bulk)	74

Data Source - Monthly Review Report [Nov-2023]

2. Cumulative Dispatch

Following data excludes the contribution from roof top solar, non telemetered solar and mini hydro plants

Table 03 - Current Month

Category	Dispatch (GWh)	
CEB Hydro	93	23.60%
CEB Coal	156	39.57%
CEB Thermal Oil	56	14.28%
IPP Thermal	46	11.80%
SPP Wind	1	0.37%
CEB Wind	1	0.30%
Mini Hydro *	14	3.60%
IPP Solar *	23	5.85%
IPP Waste heat + BMP	3	0.65%
Total	393	

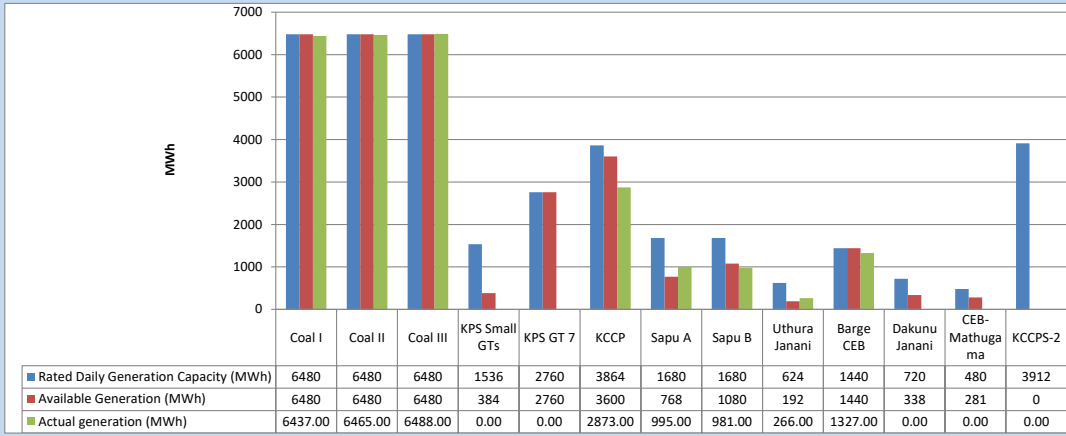
Table 04 - Current Year

Category	Dispatch (GWh)	
CEB Hydro	1,356	30.66%
CEB Coal	1,632	36.90%
CEB Thermal Oil	435	9.84%
IPP Thermal	378	8.54%
SPP Wind	48	1.08%
CEB Wind	56	1.27%
Mini Hydro *	249	5.64%
IPP Solar *	232	5.25%
IPP Waste heat	36	0.81%
Total	4,423	

*Including estimated contribution from non telemetered plants

3. CEB owned Thermal Plant Dispatch

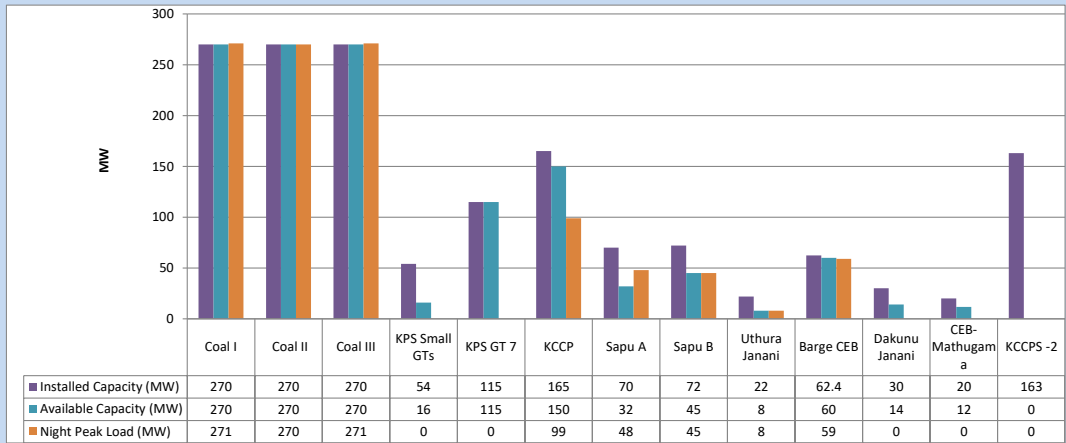
April 8, 2024



Available Generation is estimated based on plant availability at 6.00am on

April 9, 2024

4. CEB owned Thermal Plant Loading at the Night Peak

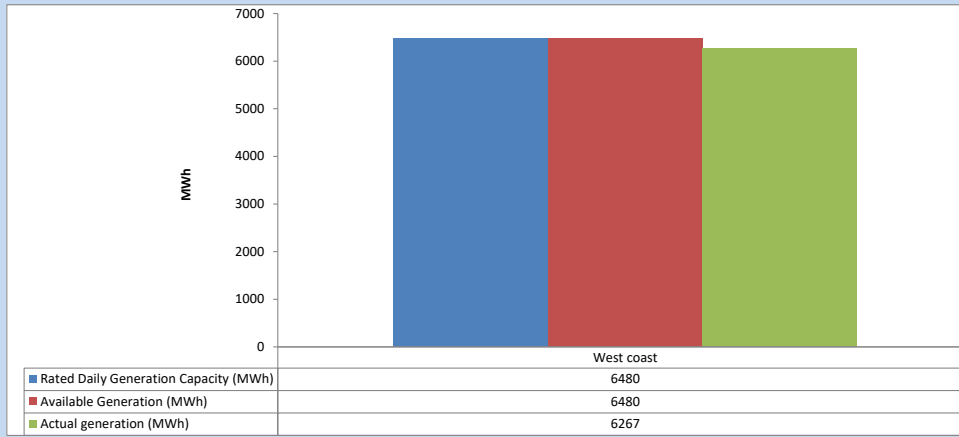


Plant availability is recorded at 6.00 am on

April 9, 2024

5. IPP owned Thermal Plant Dispatch

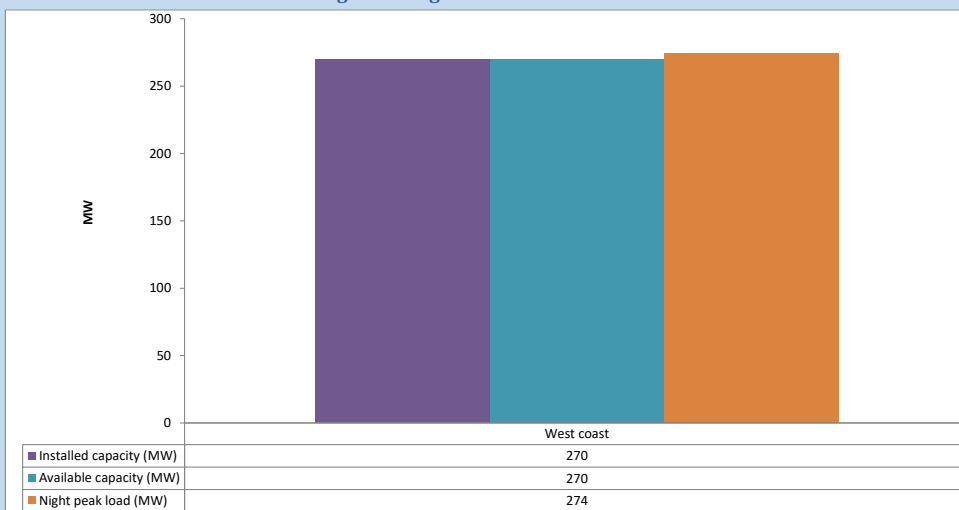
April 8, 2024



Available Generation is estimated based on plant availability at 6.00am on

April 9, 2024

6. IPP owned Thermal Plant Loading at the Night Peak

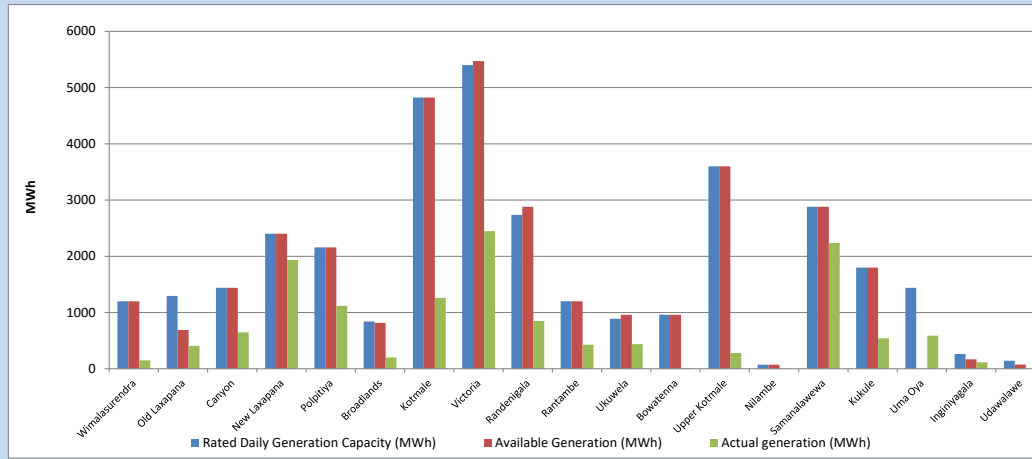


Plant availability is recorded at 6.00 am on

April 9, 2024

7. Major Hydro Plant Dispatch

April 8, 2024

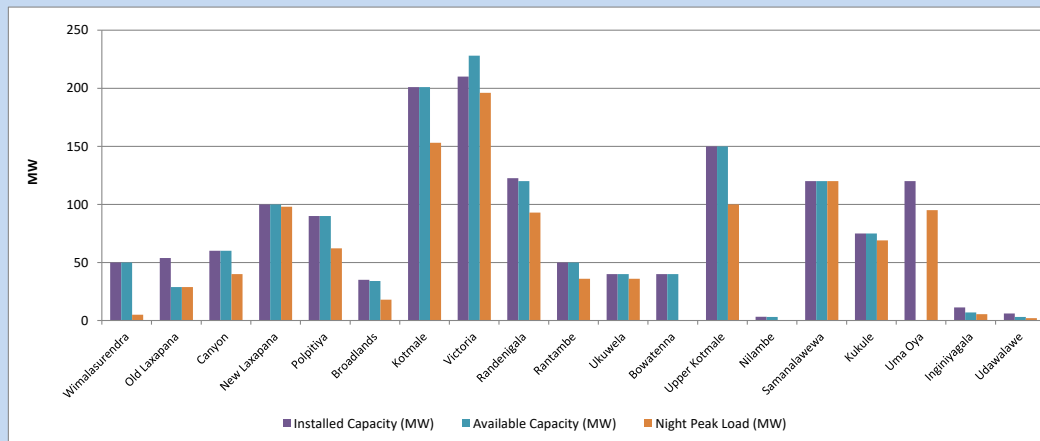


Available Generation is estimated based on plant availability at 6.00am on
Broadlands power plant is operating in the Commissioning Stage

April 9, 2024

8. Major Hydro Plant Loading at Night Peak

April 8, 2024



Plant availability is recorded at 6.00 am on
Broadlands power plant is operating in the Commissioning Stage

April 9, 2024

9. Summary of Major Plant performance

Table 05

Plant	Maximum Available Total Capacity	Plant Availability	Night peak Load	Plant Dispatch
	(MW)	(MW)	(MW)	(MWh)
Wimalasurendra	50	50	5	150
Old Laxapana	54	29	29	408
Canyon	60	60	40	648
New Laxapana	100	100	98	1,933
Polpitiya	90	90	62	1,120
Broadlands	35	34	18	202
Kotmale	201	201	153	1,260
Victoria	210	228	196	2,447
Randenigala	123	120	93	849
Rantambe	50	50	36	428
Ukuwela	40	40	36	438
Bowatenna	40	40	0	12
Upper Kotmale	150	150	100	282
Nilambe	3	3	0	0
Samanalawewa	120	120	120	2,237
Kukule	75	75	69	542
Uma Oya (Testing)	120	0	95	588
Inginiyagala	11	7	5	116
Udawalawe	6	3	2	0
Puttalam Coal I	270	270	271	6,437
Puttalam Coal II	270	270	270	6,465
Puttalam Coal III	270	270	271	6,488
KPS Small GTs	54	16	0	0
KPS GT 7	115	115	0	0
KCCP	165	150	99	2,873
Sapugaskanda A	70	32	48	995
Sapugaskanda B	72	45	45	981
Uthura Janani	22	8	8	266
Barge CEB	62	60	59	1,327
CEB-Hambantota	30	14	0	0
CEB-Mathugama	20	12	0	0
ACE Matara	24	0	0	0
Asia Power	50	0	0	0
KCCPS -2	163	0	0	0
West Coast	270	270	274	6,267
Nothern Power	36	0	0	0
ACE Embilipitiya	93	0	0	0
Total	3,594	2,932	2,577	48,091

Note-

Plant availability is the availability recorded at 6 am on

April 9, 2024

Installed Capacity is sourced from CEB Annual Report- 2022

10. Contribution to the Night Peak in MW

April 8, 2024

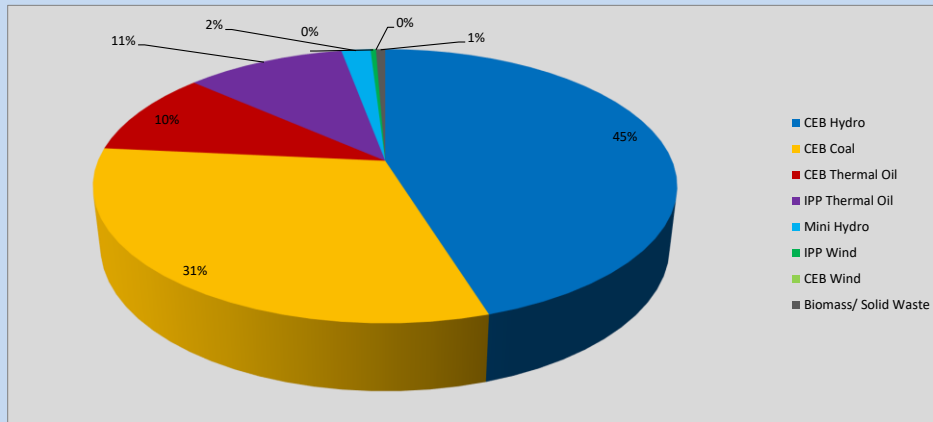


Table 06

CEB Hydro	1171	MW
CEB Coal	812	MW
CEB Thermal Oil	259	MW
IPP Thermal Oil	274	MW
Mini Hydro (Telemetered)	50	MW
IPP Wind	9.3	MW
CEB Wind	0	MW
Biomass/ Solid Waste	16	MW

Recorded Peak Demand Data

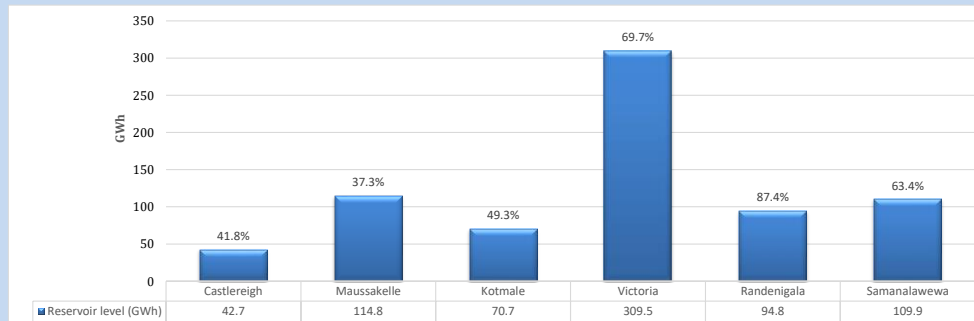
Table 07

Night Peak*	2,592	MW
Day Peak Maximum Demand	2,419	MW
Day Peak Minimum Demand	1,760	MW
Off Peak Minimum Demand	1,519	MW

Above figures are excluding contribution from roof top solar, non telemetered solar and mini hydro plants

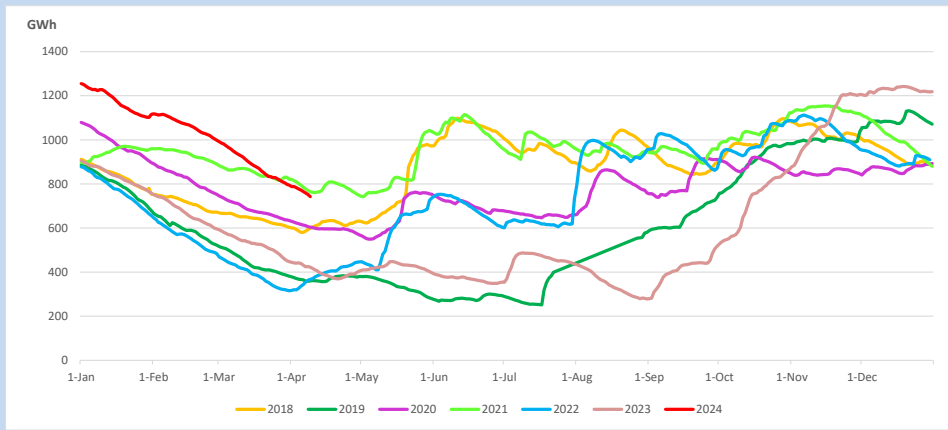
Reservoir Levels -

as at 06.00 Hr on April 9, 2024

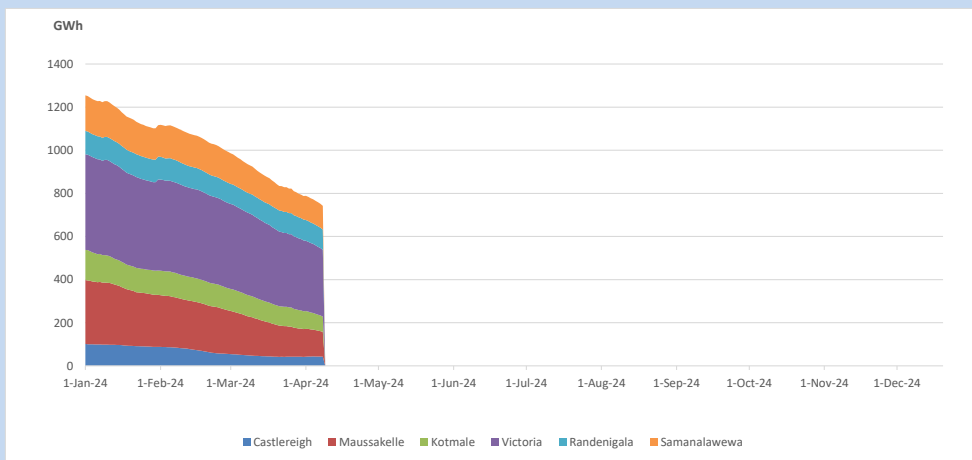


Total Reservoir Level: 742.4 GWh
 % of Total capacity: 58.0%

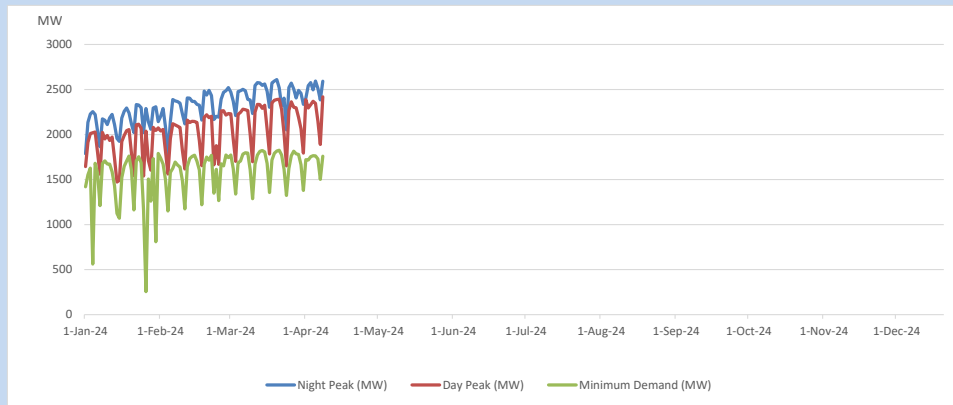
11. Comparison of Total Reservoir Storage Levels with Past Years



12. Variation of Major Hydro Reservoir Levels in the current year (GWh)



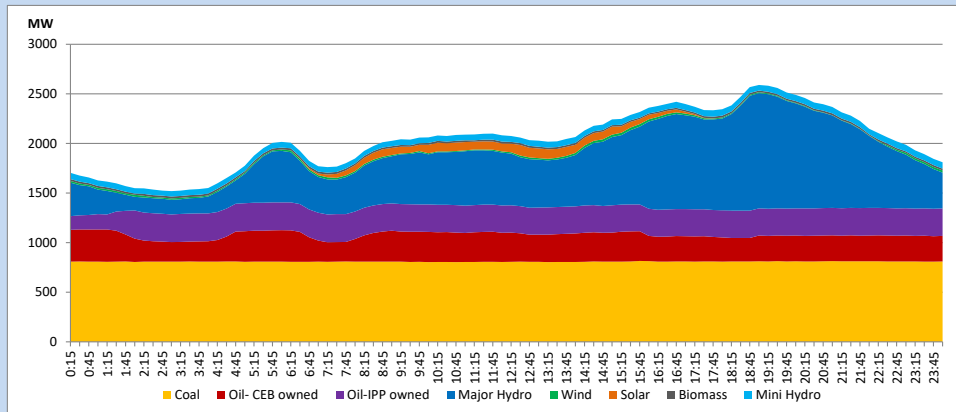
13. Variation of Demand during the current year



The above figures are excluding contribution from roof top solar, non telemetered solar and mini hydro plants

14. Daily Load Curve

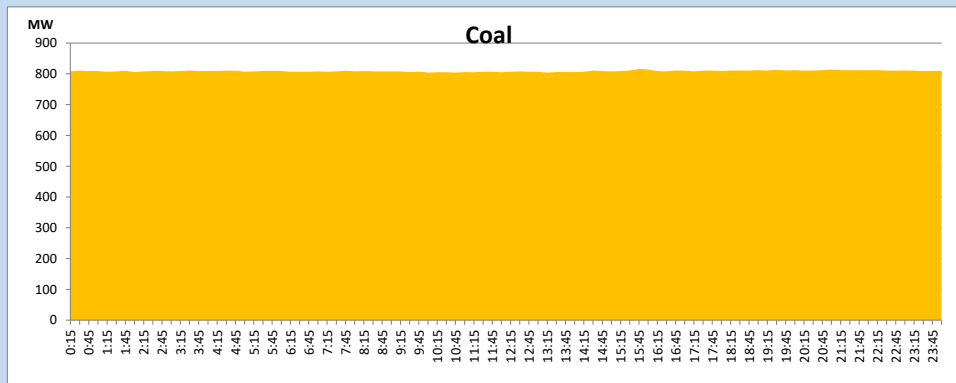
April 8, 2024



Solar and wind data is based on Telemetered Power Stations only

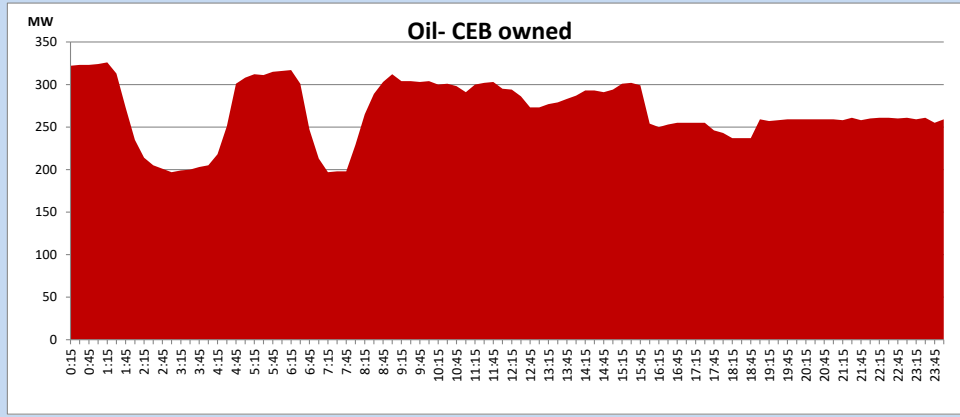
Coal Generation during

April 8, 2024



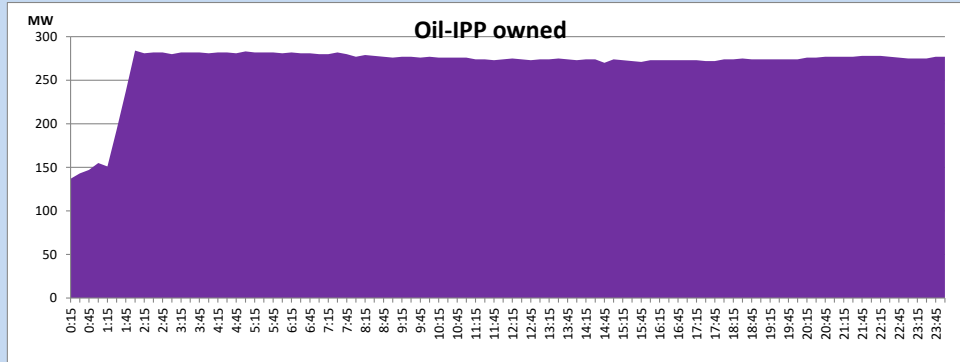
CEB Oil Plant Generation during

April 8, 2024



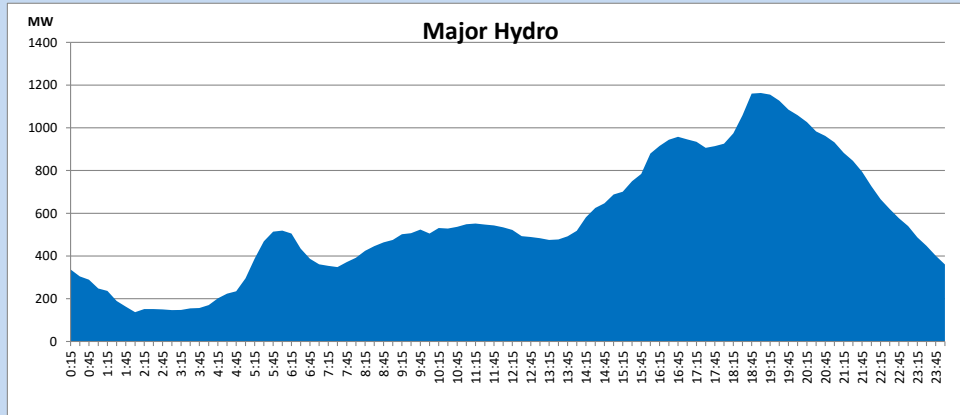
IPP Oil Plant Generation during

April 8, 2024



Major Hydro Generation during

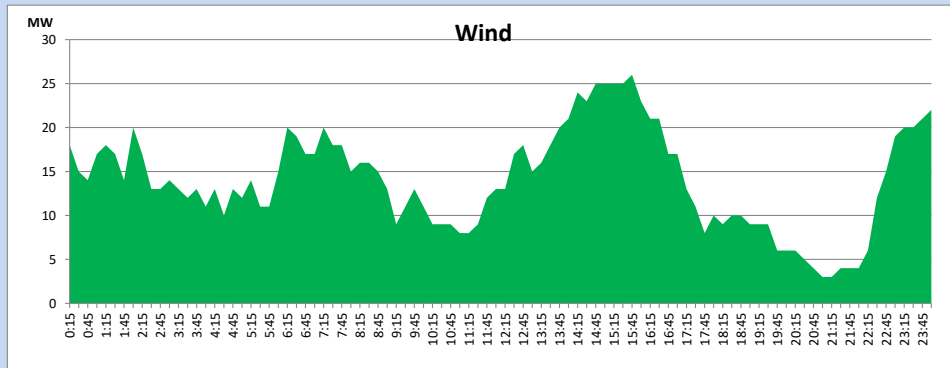
April 8, 2024



Wind Generation during

April 8, 2024

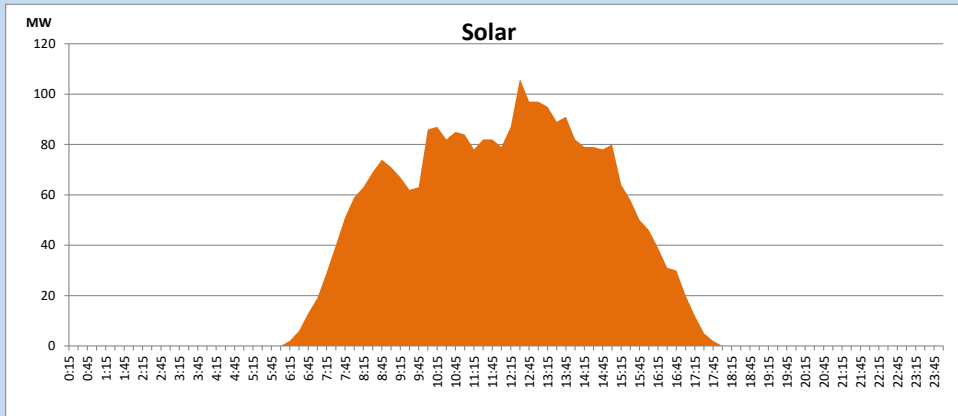
Based on Telemetered Power Stations only



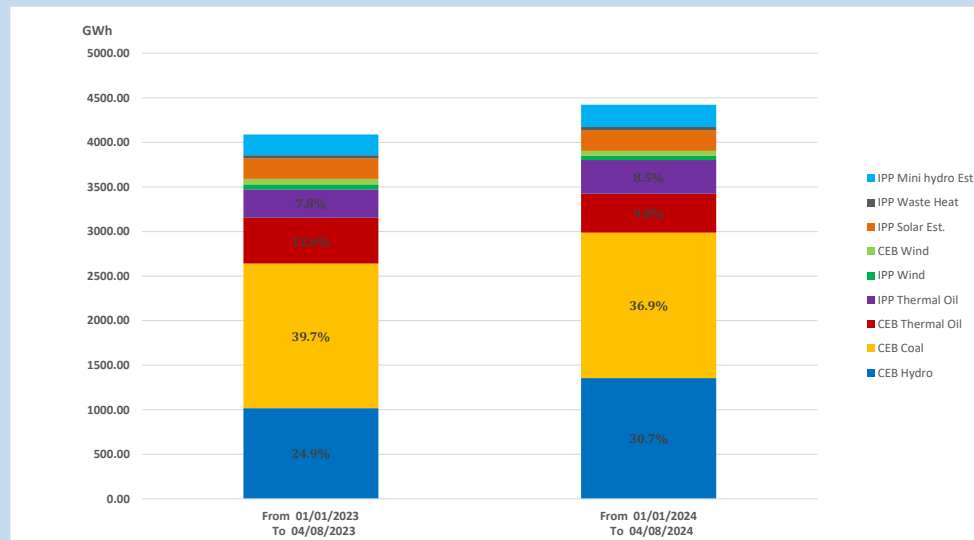
Solar Generation during

April 8, 2024

Based on Telemetered Power Stations only



15. Cumulative Dispatch Comparison with Last Year



Cumulative dispatch

From 01/01/2023 To 04/08/2023

4089 GWh

From 01/01/2024 To 04/08/2024

4423 GWh

The above figures are including contribution from roof top solar, non telemetered solar and mini hydro plants)

Unserviced energy due to power cuts has been excluded in 2023

Thermal Plant Fuel types

Table 08

Power Station	Primary Fuel
CEB Thermal	
Sapugaskanda 1	Heavy Fuel
Sapugaskanda 2	Heavy Fuel
Kelanitissa Small Gas Turbines	Auto Diesel
GT 7 - Kelanitissa	Auto Diesel
Kelanitissa CCY	Naphtha or Diesel
Lakvijaya 1	Coal
Lakvijaya 2	Coal
Lakvijaya 3	Coal
Uthuru Janani	Heavy Fuel
Barge CEB	Heavy Fuel
KCCPS -2	Auto Diesel

Power Station	Primary Fuel
Private Thermal	
West Coast	Auto Diesel / Heavy Fuel

Major Incidents reported during the day

April 8, 2024

- 1) KCCP ST tripped at 15:50hrs rejecting 51MW from the system. KCCP ST resumed generation at 05:05hrs (09.04.2024).
- 2) The recorded maximum day peak of 2418.8MW occurred today at 16:45hrs.
- 3) Bowathenna generator was made available at 18:18hrs after the planned outage of AVR replacement, which had been facilitated from 11.03.2024.