

Generation and Reservoirs Statistics

April 6, 2024



PUBLIC UTILITIES COMMISSION OF SRI LANKA

1. Daily Generation Mix in MWh

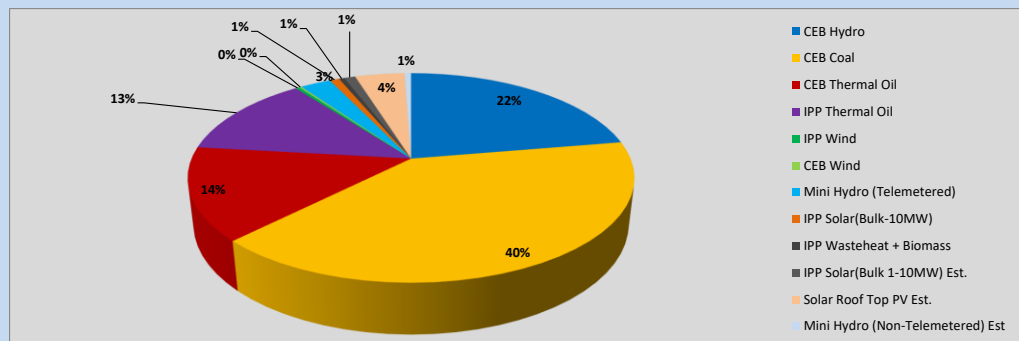


Table 01

	Generation (MWh)
CEB Hydro	10,830
CEB Coal	19,451
CEB Thermal Oil	6,952
IPP Thermal Oil	6,237
IPP Wind	168
CEB Wind	97
Mini Hydro (Telemetered)	1,288
IPP Solar (Bulk)	401
IPP Waste heat + Biomass	221
Total Generation (Excluding estimated figures)	45,645
* Estimated unserved energy	0
* Estimated Mini Hydro (Non telemetered)	274
* Estimated IPP Solar PV (Bulk 1-10MW)	474
* Estimated Solar Roof Top PV	2080
Total Generation (Including estimated figures)	48,473

* Estimated figures of CEB generation report

Table 02

	Installed Capacity (MW)
CEB Hydro	1644
CEB Coal	810
CEB Thermal Oil	773.1
IPP Thermal Oil (West Coast)	270
IPP Wind	163
CEB Wind	100
Mini Hydro	422
IPP Waste heat + Biomass	54
IPP Solar	137
Rooftop Solar (Ordinary)	293
Rooftop Solar (LT Bulk)	272
Rooftop Solar (HT Bulk)	74

Data Source - Monthly Review Report [Nov-2023]

2. Cumulative Dispatch

Following data excludes the contribution from roof top solar, non telemetered solar and mini hydro plants

Table 03 - Current Month

Category	Dispatch (GWh)	
CEB Hydro	68	22.98%
CEB Coal	117	39.25%
CEB Thermal Oil	43	14.57%
IPP Thermal	37	12.42%
SPP Wind	1	0.36%
CEB Wind	1	0.28%
Mini Hydro *	11	3.77%
IPP Solar *	17	5.79%
IPP Waste heat + BMP	2	0.58%
Total	298	

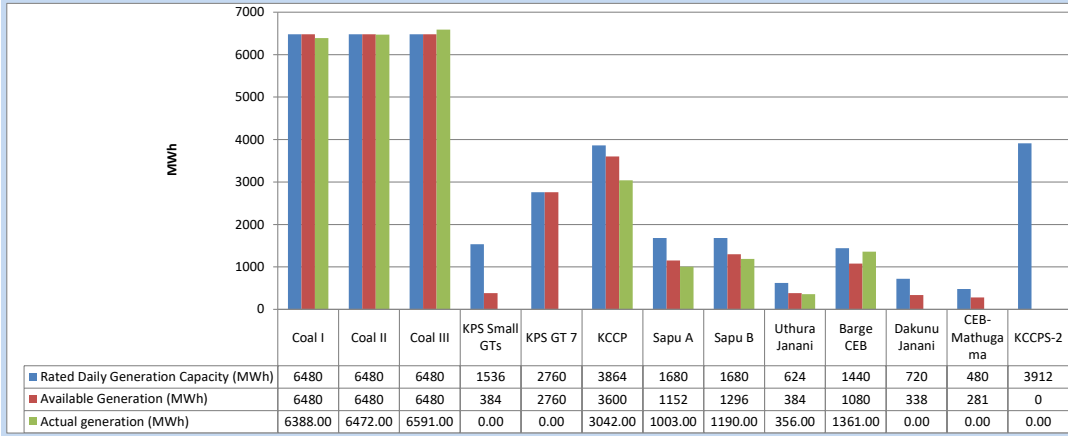
Table 04 - Current Year

Category	Dispatch (GWh)	
CEB Hydro	1,332	30.77%
CEB Coal	1,593	36.82%
CEB Thermal Oil	423	9.77%
IPP Thermal	368	8.51%
SPP Wind	47	1.10%
CEB Wind	56	1.29%
Mini Hydro *	246	5.69%
IPP Solar *	227	5.23%
IPP Waste heat	35	0.81%
Total	4,327	

*Including estimated contribution from non telemetered plants

3. CEB owned Thermal Plant Dispatch

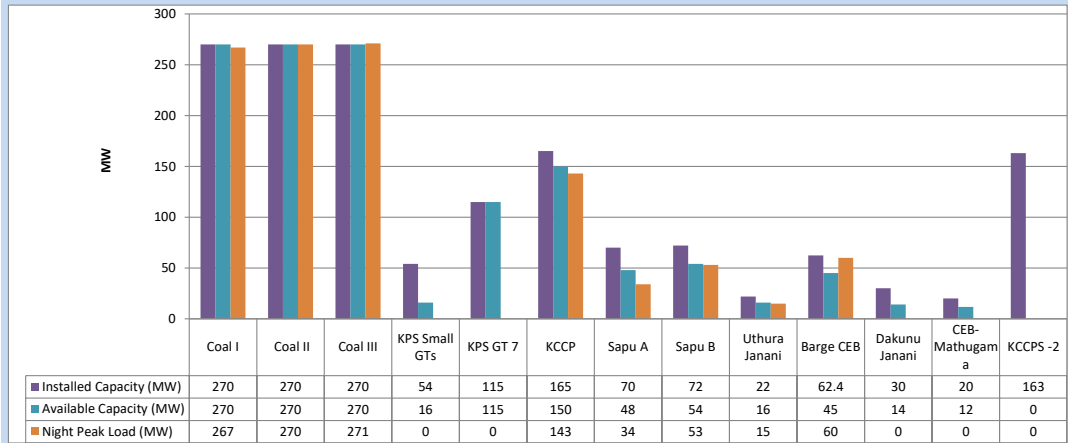
April 6, 2024



Available Generation is estimated based on plant availability at 6.00am on

April 7, 2024

4. CEB owned Thermal Plant Loading at the Night Peak

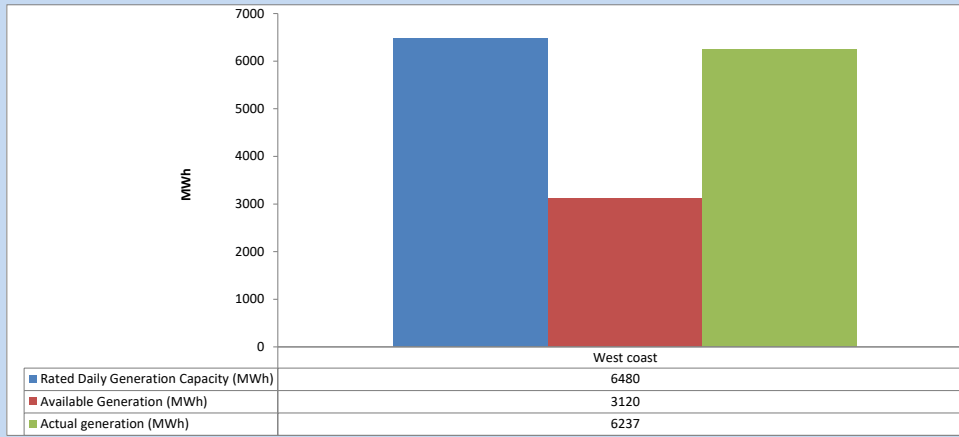


Plant availability is recorded at 6.00 am on

April 7, 2024

5. IPP owned Thermal Plant Dispatch

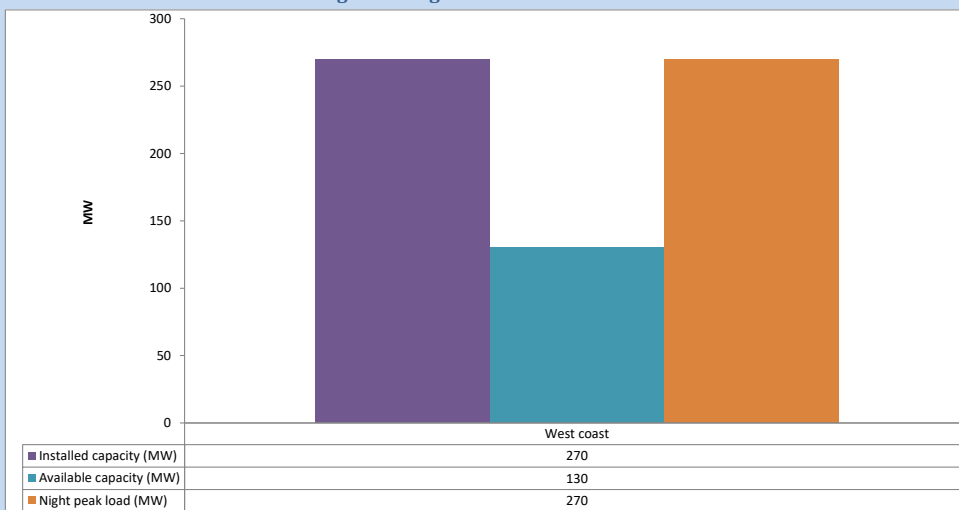
April 6, 2024



Available Generation is estimated based on plant availability at 6.00am on

April 7, 2024

6. IPP owned Thermal Plant Loading at the Night Peak

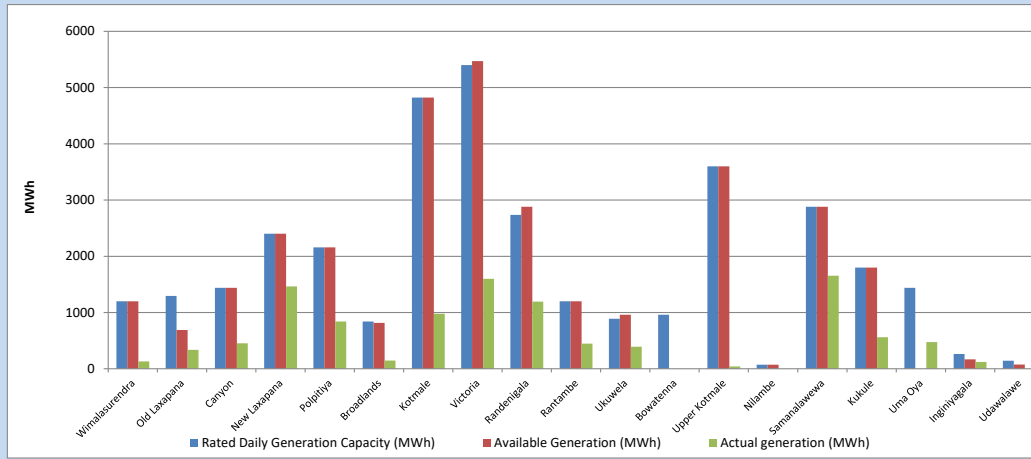


Plant availability is recorded at 6.00 am on

April 7, 2024

7. Major Hydro Plant Dispatch

April 6, 2024

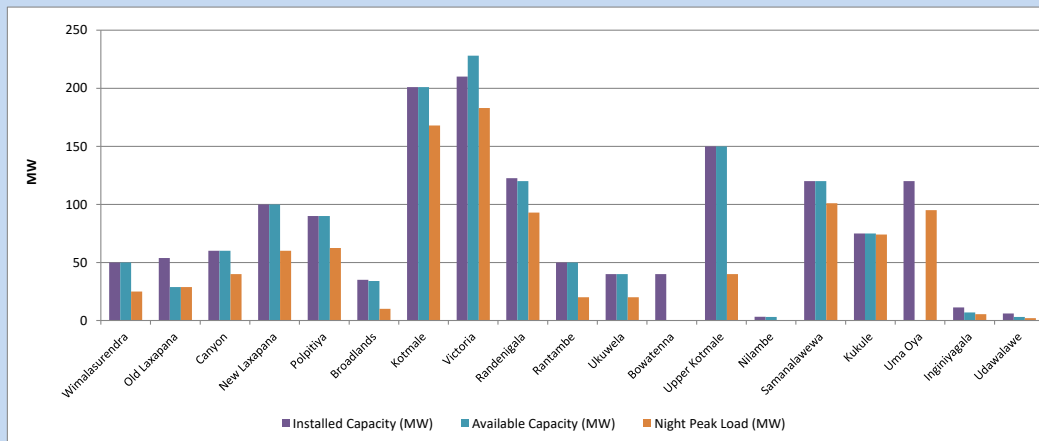


Available Generation is estimated based on plant availability at 6.00am on
Broadlands power plant is operating in the Commissioning Stage

April 7, 2024

8. Major Hydro Plant Loading at Night Peak

April 6, 2024



Plant availability is recorded at 6.00 am on
Broadlands power plant is operating in the Commissioning Stage

April 7, 2024

9. Summary of Major Plant performance

Table 05

Plant	Maximum Available Total Capacity	Plant Availability	Night peak Load	Plant Dispatch
	(MW)	(MW)	(MW)	(MWh)
Wimalasurendra	50	50	25	131
Old Laxapana	54	29	29	336
Canyon	60	60	40	454
New Laxapana	100	100	60	1,465
Polpitiya	90	90	62	840
Broadlands	35	34	10	146
Kotmale	201	201	168	980
Victoria	210	228	183	1,598
Randenigala	123	120	93	1,193
Rantambe	50	50	20	448
Ukuwela	40	40	20	391
Bowatenna	40	0	0	0
Upper Kotmale	150	150	40	40
Nilambe	3	3	0	0
Samanalawewa	120	120	101	1,654
Kukule	75	75	74	560
Uma Oya (Testing)	120	0	95	476
Inginiyagala	11	7	5	120
Udawalawe	6	3	2	0
Puttalam Coal I	270	270	267	6,388
Puttalam Coal II	270	270	270	6,472
Puttalam Coal III	270	270	271	6,591
KPS Small GTs	54	16	0	0
KPS GT 7	115	115	0	0
KCCP	165	150	143	3,042
Sapugaskanda A	70	48	34	1,003
Sapugaskanda B	72	54	53	1,190
Uthura Janani	22	16	15	356
Barge CEB	62	45	60	1,361
CEB-Hambantota	30	14	0	0
CEB-Mathugama	20	12	0	0
ACE Matara	24	0	0	0
Asia Power	50	0	0	0
KCCPS -2	163	0	0	0
West Coast	270	130	270	6,237
Nothern Power	36	0	0	0
ACE Embilipitiya	93	0	0	0
Total	3,594	2,770	2,480	45,647

Note-

Plant availability is the availability recorded at 6 am on

April 7, 2024

Installed Capacity is sourced from CEB Annual Report- 2022

10. Contribution to the Night Peak in MW

April 6, 2024

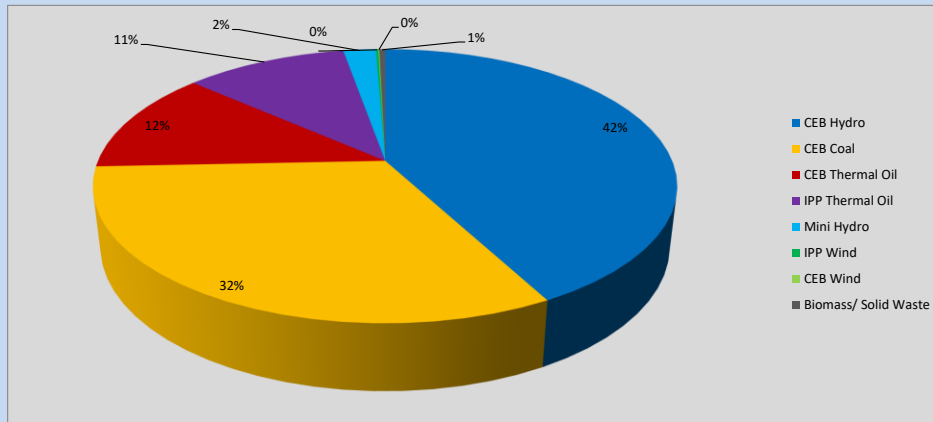


Table 06

CEB Hydro	1059	MW
CEB Coal	808	MW
CEB Thermal Oil	305	MW
IPP Thermal Oil	270	MW
Mini Hydro (Telemetered)	54	MW
IPP Wind	4.2	MW
CEB Wind	1.4	MW
Biomass/ Solid Waste	10	MW

Recorded Peak Demand Data

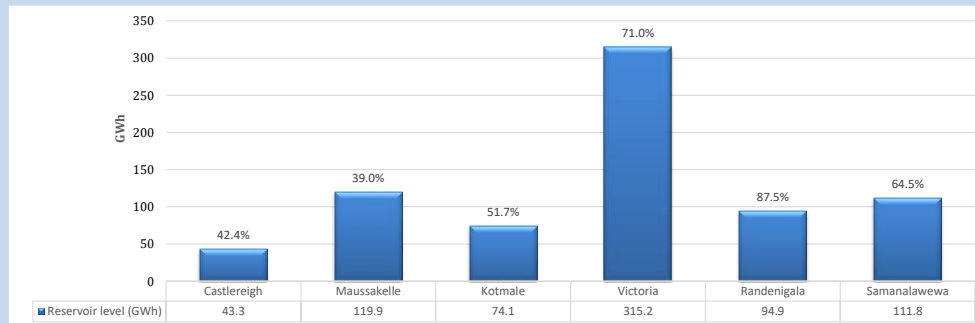
Table 07

Night Peak*	2,512	MW
Day Peak Maximum Demand	2,147	MW
Day Peak Minimum Demand	1,728	MW
Off Peak Minimum Demand	1,614	MW

Above figures are excluding contribution from roof top solar, non telemetered solar and mini hydro plants

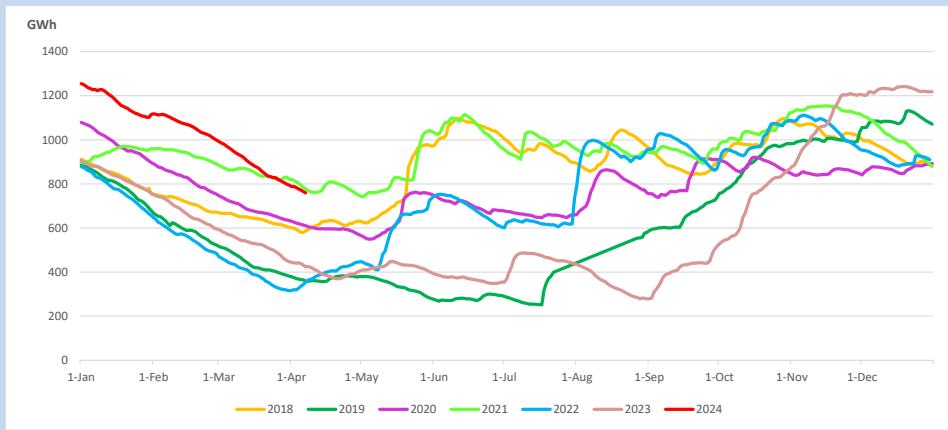
Reservoir Levels -

as at 06.00 Hr on April 7, 2024

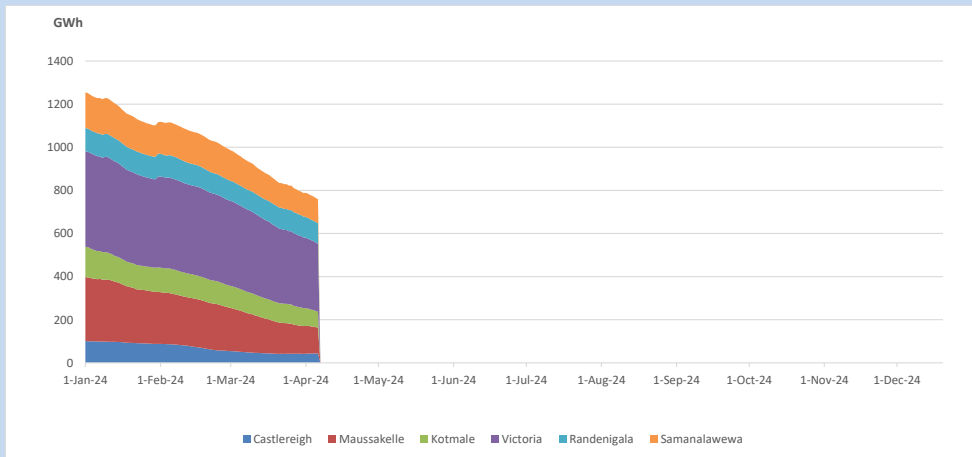


Total Reservoir Level 759.2 GWh
% of Total capacity 59.4%

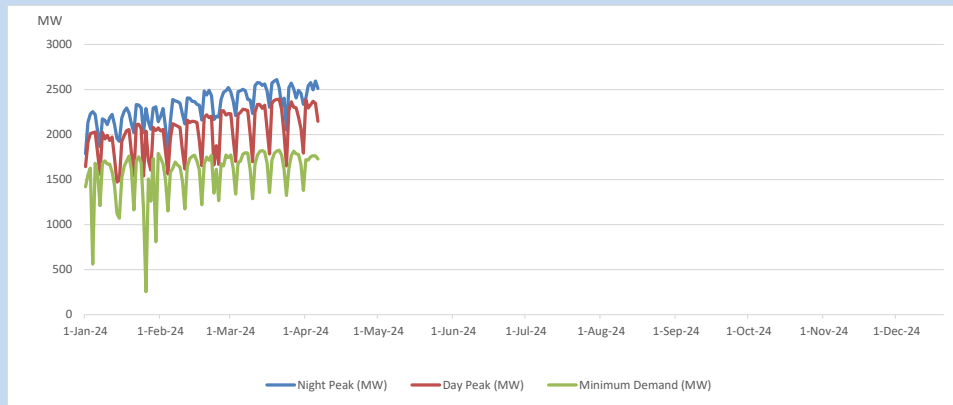
11. Comparison of Total Reservoir Storage Levels with Past Years



12. Variation of Major Hydro Reservoir Levels in the current year (GWh)



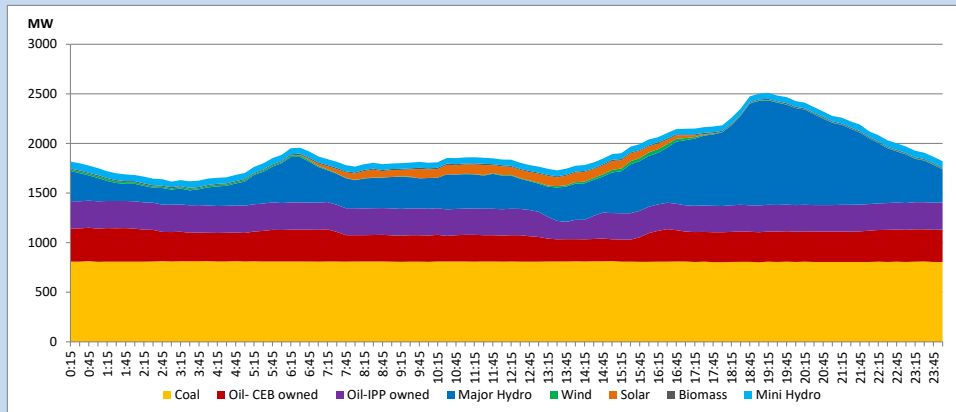
13. Variation of Demand during the current year



The above figures are excluding contribution from roof top solar, non telemetered solar and mini hydro plants

14. Daily Load Curve

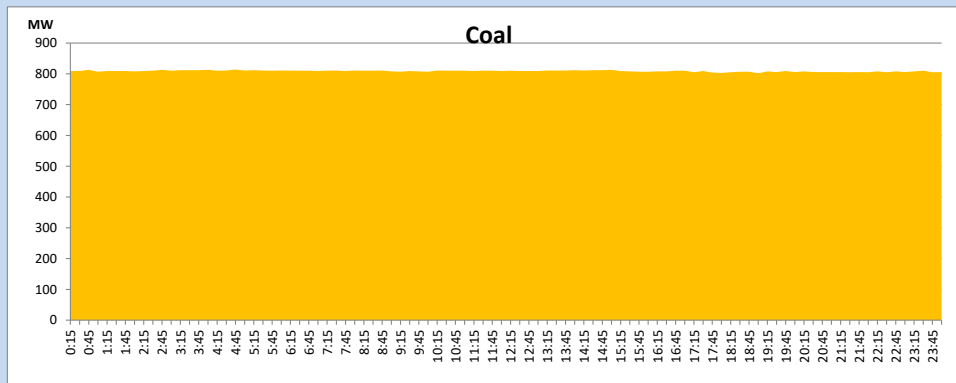
April 6, 2024



Solar and wind data is based on Telemetered Power Stations only

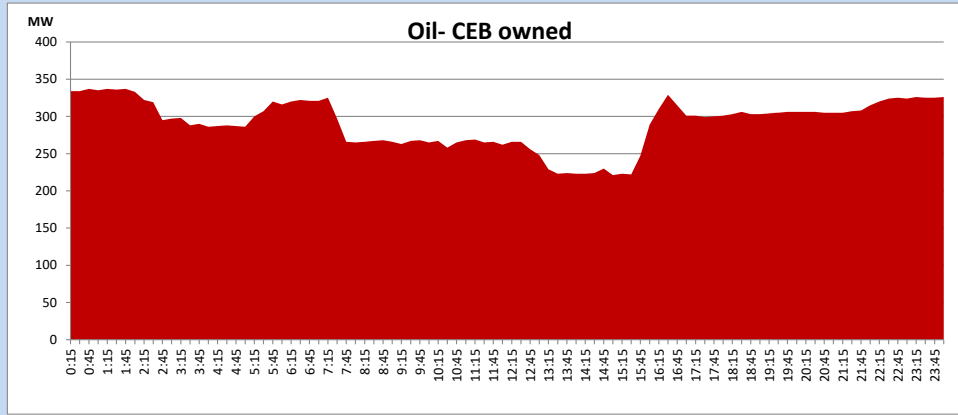
Coal Generation during

April 6, 2024



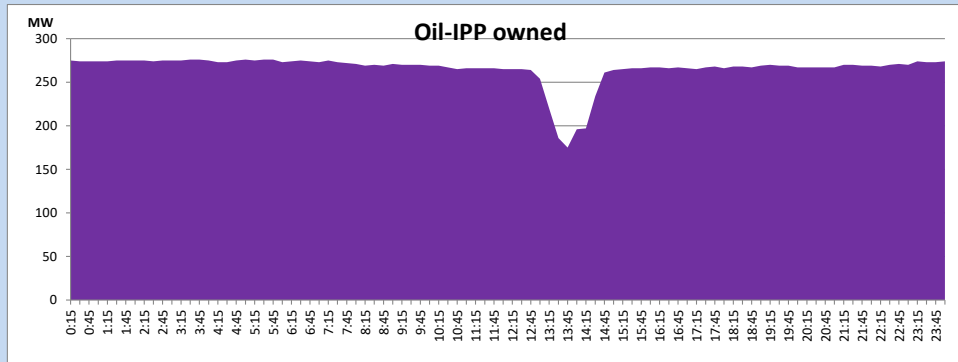
CEB Oil Plant Generation during

April 6, 2024



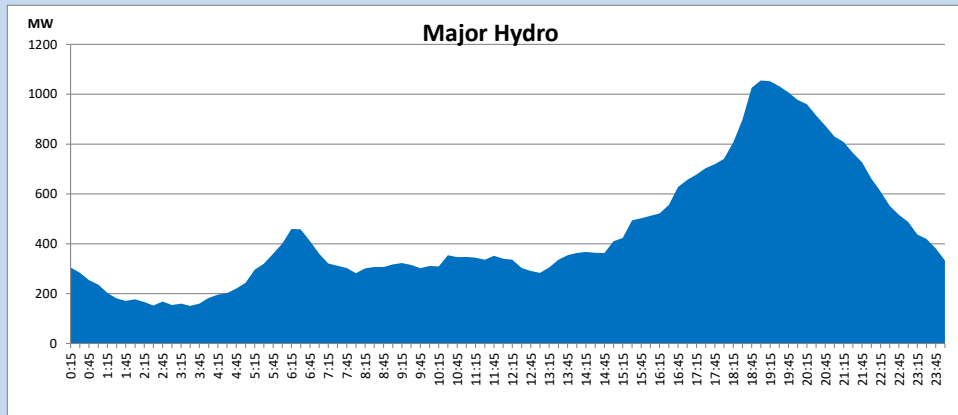
IPP Oil Plant Generation during

April 6, 2024



Major Hydro Generation during

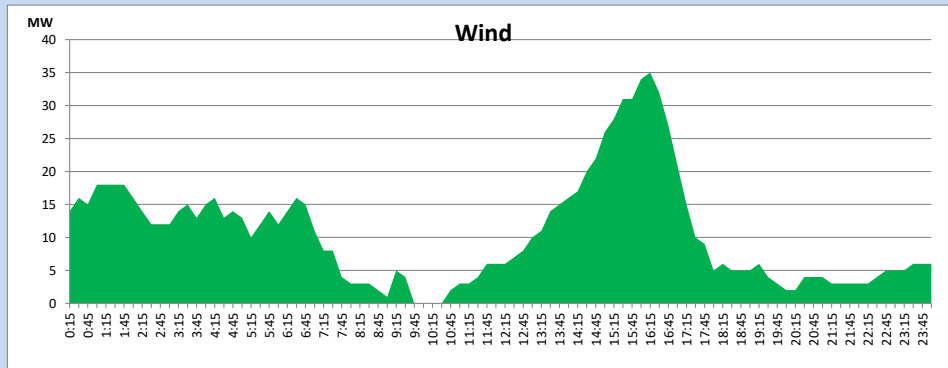
April 6, 2024



Wind Generation during

April 6, 2024

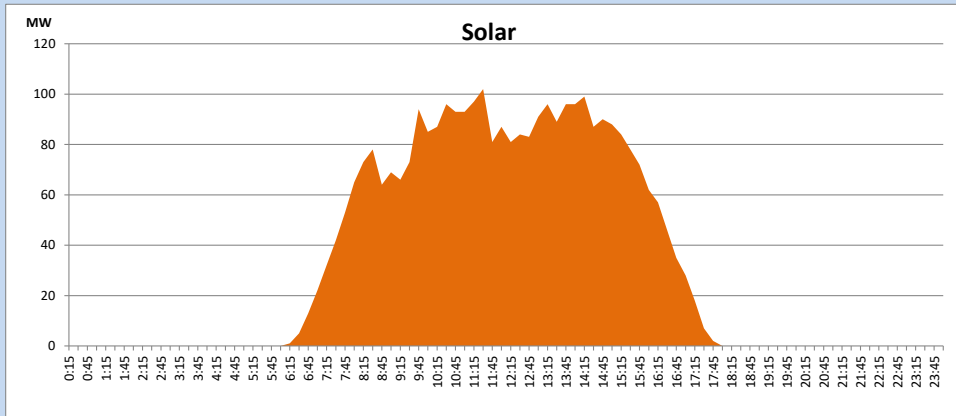
Based on Telemetered Power Stations only



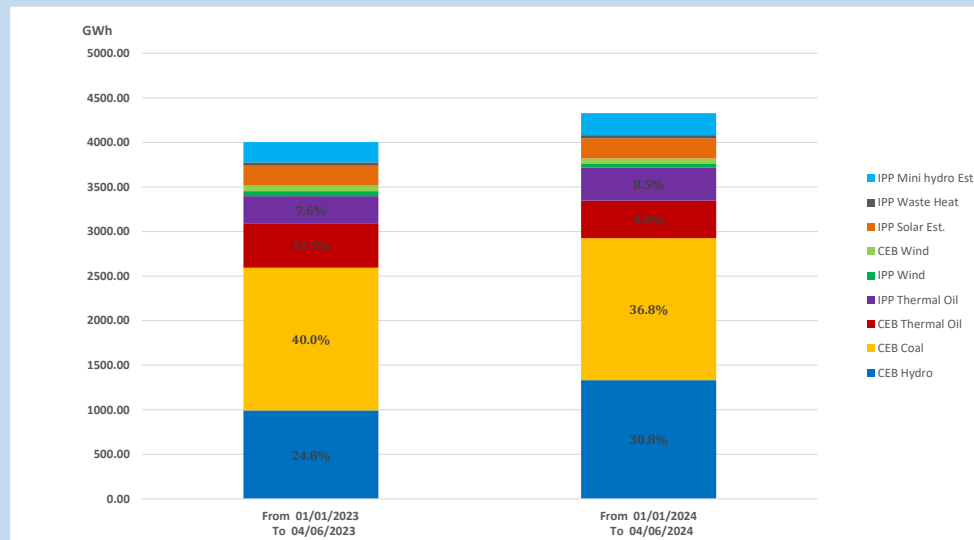
Solar Generation during

April 6, 2024

Based on Telemetered Power Stations only



15. Cumulative Dispatch Comparison with Last Year



Cumulative dispatch

From 01/01/2023 To 04/06/2023

4003 GWh

From 01/01/2024 To 04/06/2024

4327 GWh

The above figures are including contribution from roof top solar, non telemetered solar and mini hydro plants)

Unserviced energy due to power cuts has been excluded in 2023

Thermal Plant Fuel types

Table 08

Power Station	Primary Fuel
CEB Thermal	
Sapugaskanda 1	Heavy Fuel
Sapugaskanda 2	Heavy Fuel
Kelanitissa Small Gas Turbines	Auto Diesel
GT 7 - Kelanitissa	Auto Diesel
Kelanitissa CCY	Naphtha or Diesel
Lakvijaya 1	Coal
Lakvijaya 2	Coal
Lakvijaya 3	Coal
Uthuru Janani	Heavy Fuel
Barge CEB	Heavy Fuel
KCCPS -2	Auto Diesel

Power Station	Primary Fuel
Private Thermal	
West Coast	Auto Diesel / Heavy Fuel

Major Incidents reported during the day

April 6, 2024

1) Embilipitiya GSS 132/33kV T/F 02 tripped from both sides at 17:05hrs along with 33kV feeders 05,06,07 and 33kV BS CB due to the operation of E/F protection, causing 33kV BS 02 to be dead. Embilipitiya GSS T/F 02 energized at 21:06hrs and all affected feeders, except feeder 07 restored at 21:15hrs. 33kV BS CB normalized at 21:50hrs.