

Generation and Reservoirs Statistics

April 5, 2024



PUBLIC UTILITIES COMMISSION OF SRI LANKA

1. Daily Generation Mix in MWh

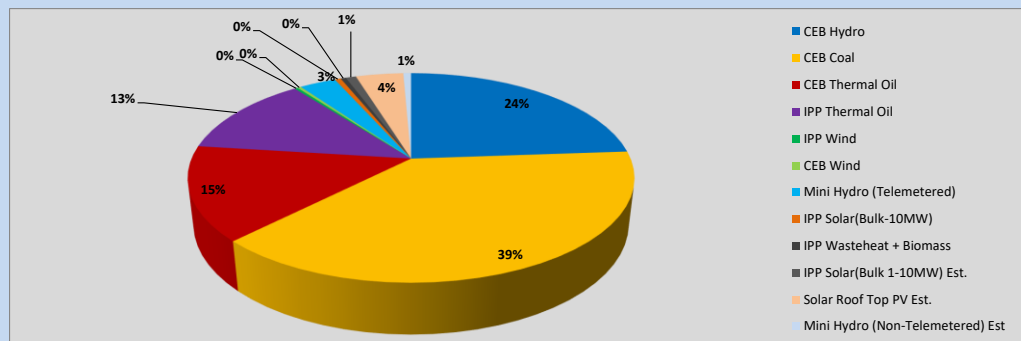


Table 01

	Generation (MWh)
CEB Hydro	12,057
CEB Coal	19,473
CEB Thermal Oil	7,352
IPP Thermal Oil	6,357
IPP Wind	144
CEB Wind	155
Mini Hydro (Telemetered)	1,595
IPP Solar (Bulk)	268
IPP Waste heat + Biomass	229
Total Generation (Excluding estimated figures)	47,630
* Estimated unserved energy	0
* Estimated Mini Hydro (Non telemetered)	340
* Estimated IPP Solar PV (Bulk 1-10MW)	452
* Estimated Solar Roof Top PV	2080
Total Generation (Including estimated figures)	50,502

* Estimated figures of CEB generation report

Table 02

	Installed Capacity (MW)
CEB Hydro	1644
CEB Coal	810
CEB Thermal Oil	773.1
IPP Thermal Oil (West Coast)	270
IPP Wind	163
CEB Wind	100
Mini Hydro	422
IPP Waste heat + Biomass	54
IPP Solar	137
Rooftop Solar (Ordinary)	293
Rooftop Solar (LT Bulk)	272
Rooftop Solar (HT Bulk)	74

Data Source - Monthly Review Report [Nov-2023]

2. Cumulative Dispatch

Following data excludes the contribution from roof top solar, non telemetered solar and mini hydro plants

Table 03 - Current Month

Category	Dispatch (GWh)	
CEB Hydro	58	23.11%
CEB Coal	97	39.07%
CEB Thermal Oil	36	14.61%
IPP Thermal	31	12.33%
SPP Wind	1	0.36%
CEB Wind	1	0.29%
Mini Hydro *	10	3.88%
IPP Solar *	14	5.73%
IPP Waste heat + BMP	2	0.61%
Total	249	

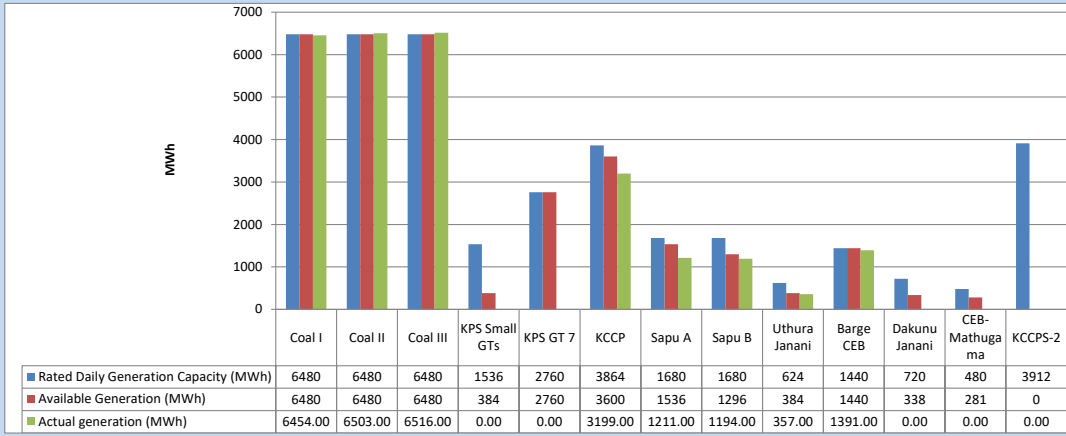
Table 04 - Current Year

Category	Dispatch (GWh)	
CEB Hydro	1,321	30.87%
CEB Coal	1,574	36.79%
CEB Thermal Oil	416	9.71%
IPP Thermal	362	8.46%
SPP Wind	47	1.11%
CEB Wind	56	1.31%
Mini Hydro *	245	5.72%
IPP Solar *	224	5.22%
IPP Waste heat	35	0.81%
Total	4,278	

*Including estimated contribution from non telemetered plants

3. CEB owned Thermal Plant Dispatch

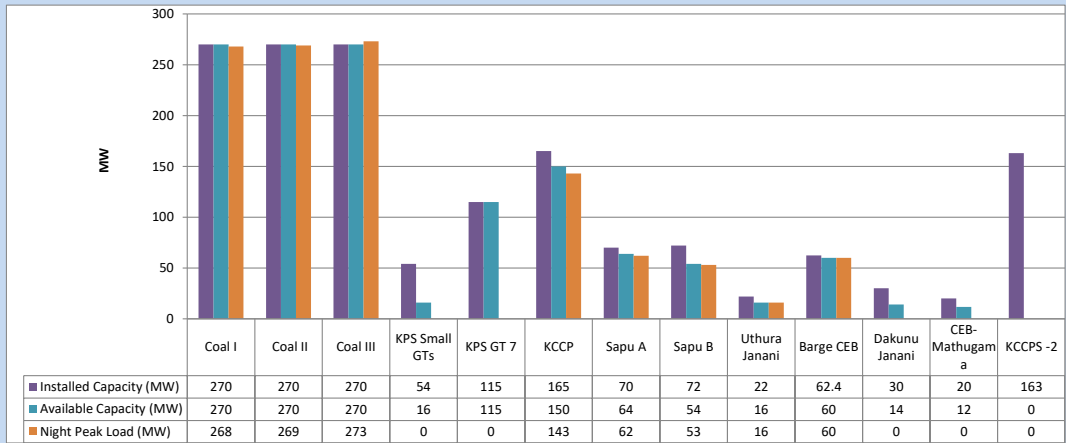
April 5, 2024



Available Generation is estimated based on plant availability at 6.00am on

April 6, 2024

4. CEB owned Thermal Plant Loading at the Night Peak

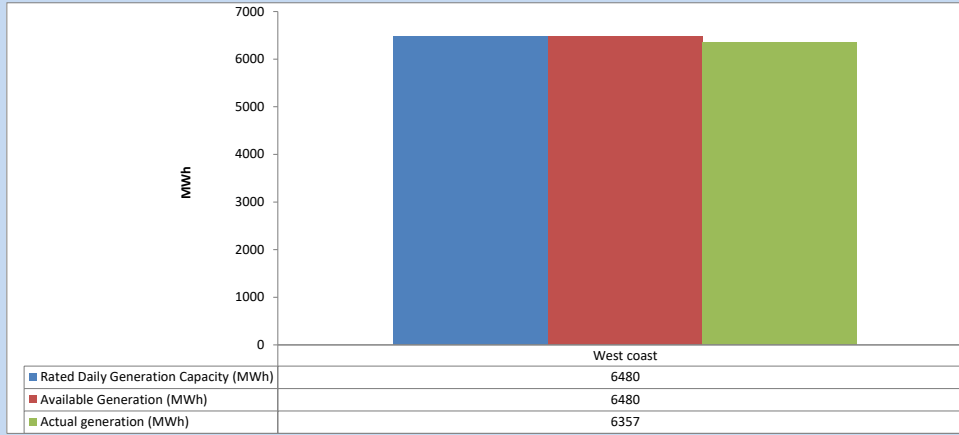


Plant availability is recorded at 6.00 am on

April 6, 2024

5. IPP owned Thermal Plant Dispatch

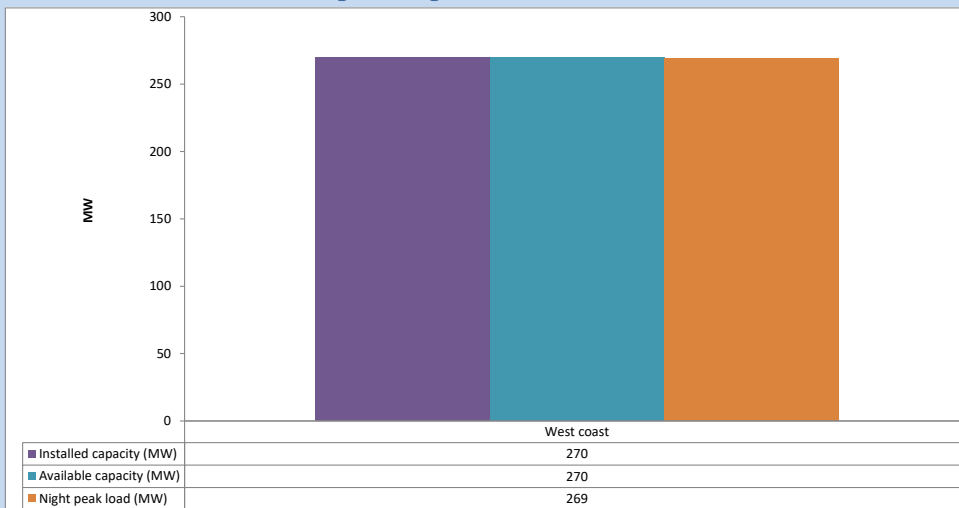
April 5, 2024



Available Generation is estimated based on plant availability at 6.00am on

April 6, 2024

6. IPP owned Thermal Plant Loading at the Night Peak

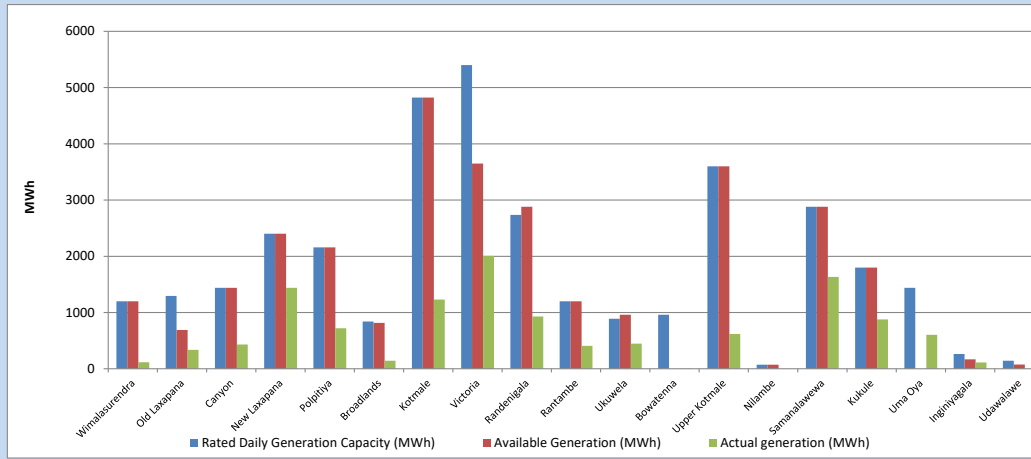


Plant availability is recorded at 6.00 am on

April 6, 2024

7. Major Hydro Plant Dispatch

April 5, 2024

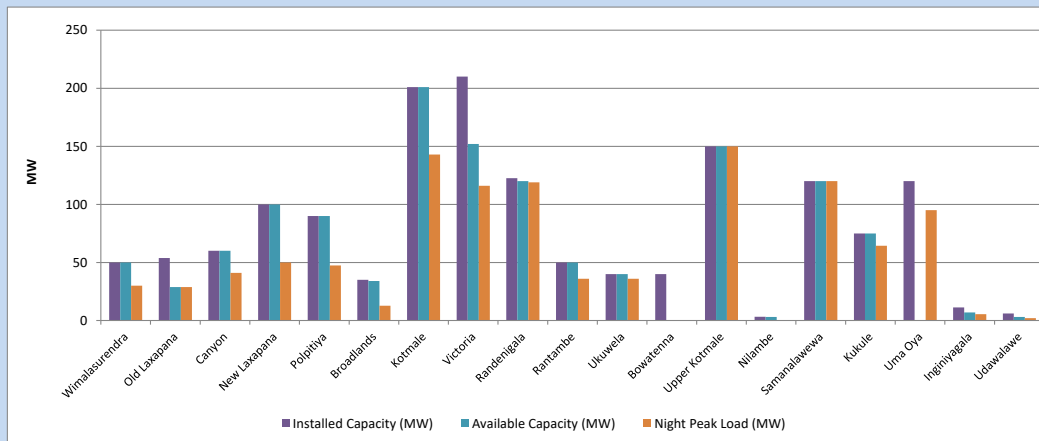


Available Generation is estimated based on plant availability at 6.00am on April 6, 2024
Broadlands power plant is operating in the Commissioning Stage

April 6, 2024

8. Major Hydro Plant Loading at Night Peak

April 5, 2024



Plant availability is recorded at 6.00 am on April 6, 2024
Broadlands power plant is operating in the Commissioning Stage

April 6, 2024

9. Summary of Major Plant performance

Table 05

Plant	Maximum Available Total Capacity	Plant Availability	Night peak Load	Plant Dispatch
	(MW)	(MW)	(MW)	(MWh)
Wimalasurendra	50	50	30	115
Old Laxapana	54	29	29	337
Canyon	60	60	41	433
New Laxapana	100	100	50	1,440
Polpitiya	90	90	47	720
Broadlands	35	34	13	144
Kotmale	201	201	143	1,230
Victoria	210	152	116	2,007
Randenigala	123	120	119	930
Rantambe	50	50	36	406
Ukuwela	40	40	36	448
Bowatenna	40	0	0	2
Upper Kotmale	150	150	150	620
Nilambe	3	3	0	0
Samanalawewa	120	120	120	1,633
Kukule	75	75	64	877
Uma Oya (Testing)	120	0	95	604
Inginiyagala	11	7	5	111
Udawalawe	6	3	2	0
Puttalam Coal I	270	270	268	6,454
Puttalam Coal II	270	270	269	6,503
Puttalam Coal III	270	270	273	6,516
KPS Small GTs	54	16	0	0
KPS GT 7	115	115	0	0
KCCP	165	150	143	3,199
Sapugaskanda A	70	64	62	1,211
Sapugaskanda B	72	54	53	1,194
Uthura Janani	22	16	16	357
Barge CEB	62	60	60	1,391
CEB-Hambantota	30	14	0	0
CEB-Mathugama	20	12	0	0
ACE Matara	24	0	0	0
Asia Power	50	0	0	0
KCCPS -2	163	0	0	0
West Coast	270	270	269	6,357
Nothern Power	36	0	0	0
ACE Embilipitiya	93	0	0	0
Total	3,594	2,865	2,581	47,630

Note-

Plant availability is the availability recorded at 6 am on

April 6, 2024

Installed Capacity is sourced from CEB Annual Report- 2022

10. Contribution to the Night Peak in MW

April 5, 2024

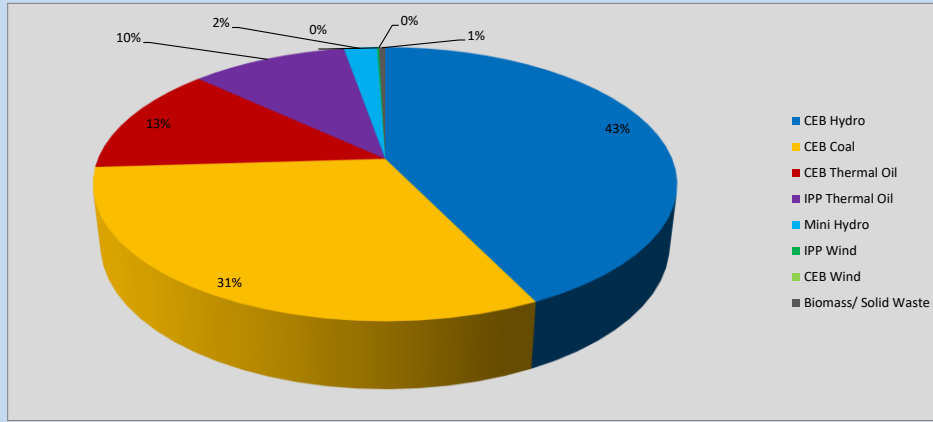


Table 06

CEB Hydro	1111	MW
CEB Coal	810	MW
CEB Thermal Oil	334	MW
IPP Thermal Oil	269	MW
Mini Hydro (Telemetered)	57	MW
IPP Wind	3.3	MW
CEB Wind	0	MW
Biomass/ Solid Waste	11	MW

Recorded Peak Demand Data

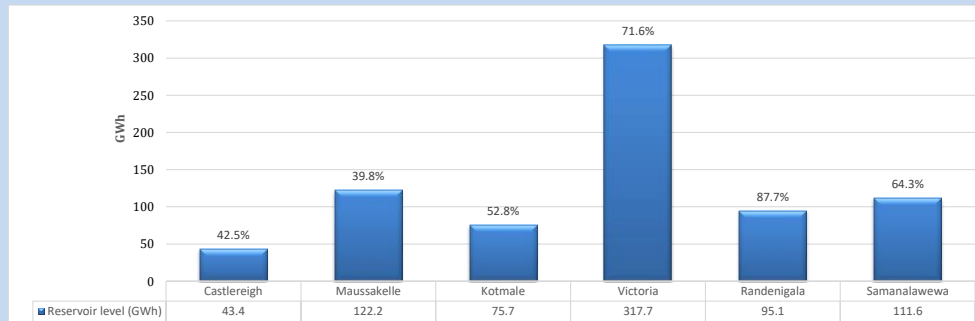
Table 07

Night Peak*	2,595	MW
Day Peak Maximum Demand	2,346	MW
Day Peak Minimum Demand	1,763	MW
Off Peak Minimum Demand	1,549	MW

Above figures are excluding contribution from roof top solar, non telemetered solar and mini hydro plants

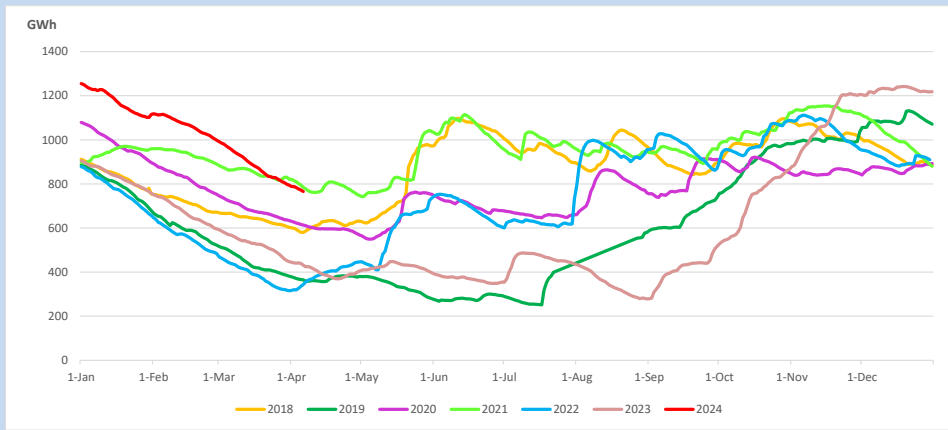
Reservoir Levels -

as at 06.00 Hr on April 6, 2024

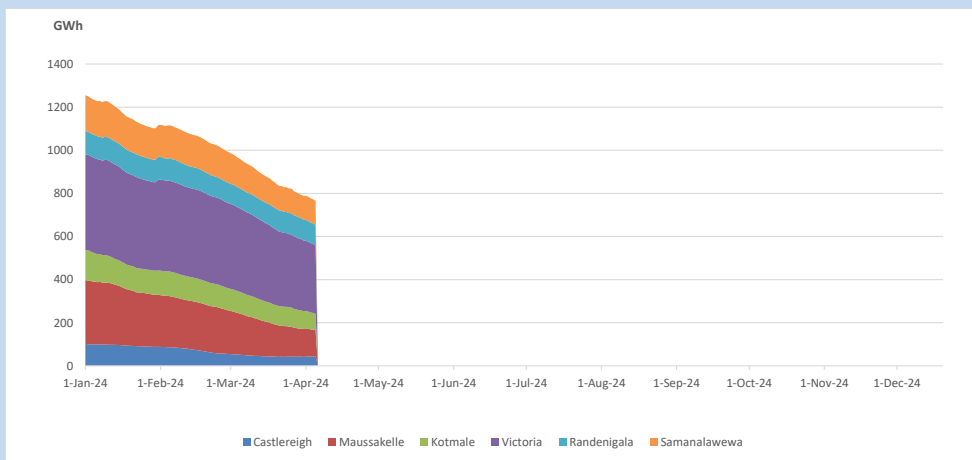


Total Reservoir Level 765.7 GWh
% of Total capacity 59.9%

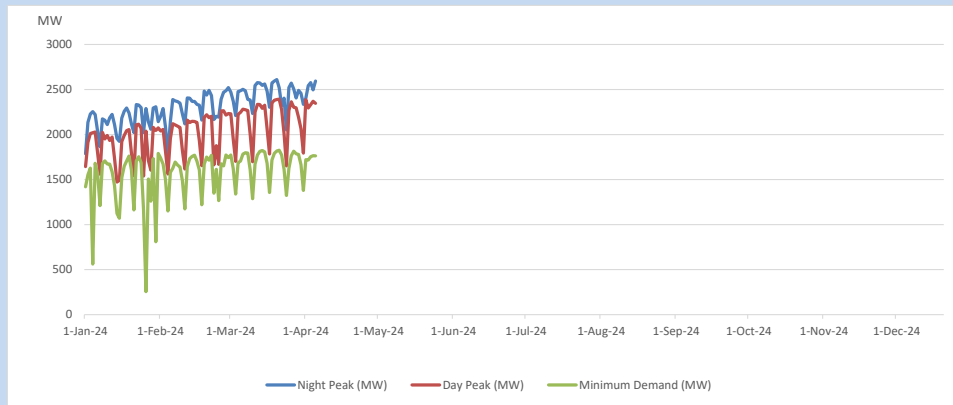
11. Comparison of Total Reservoir Storage Levels with Past Years



12. Variation of Major Hydro Reservoir Levels in the current year (GWh)



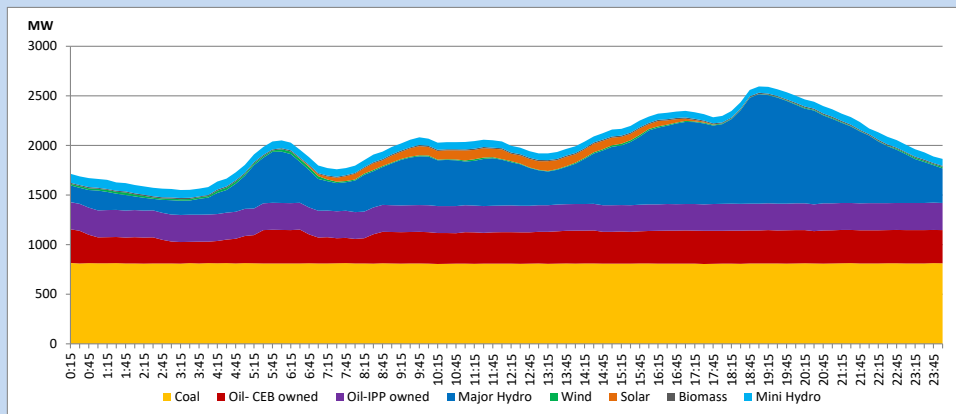
13. Variation of Demand during the current year



The above figures are excluding contribution from roof top solar, non telemetered solar and mini hydro plants

14. Daily Load Curve

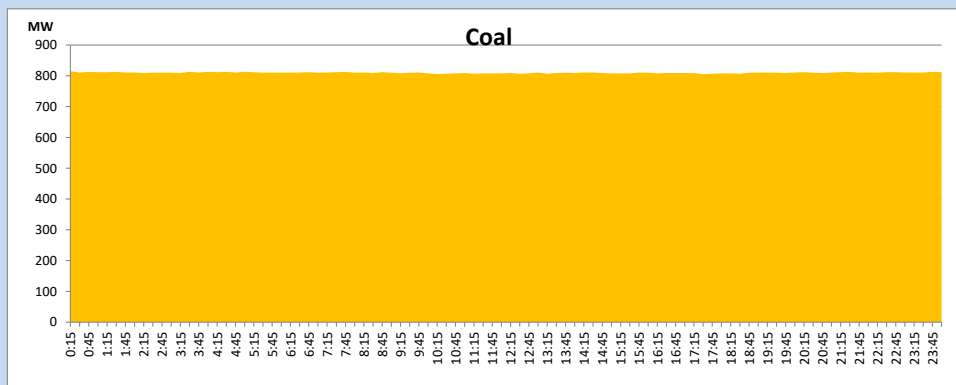
April 5, 2024



Solar and wind data is based on Telemetered Power Stations only

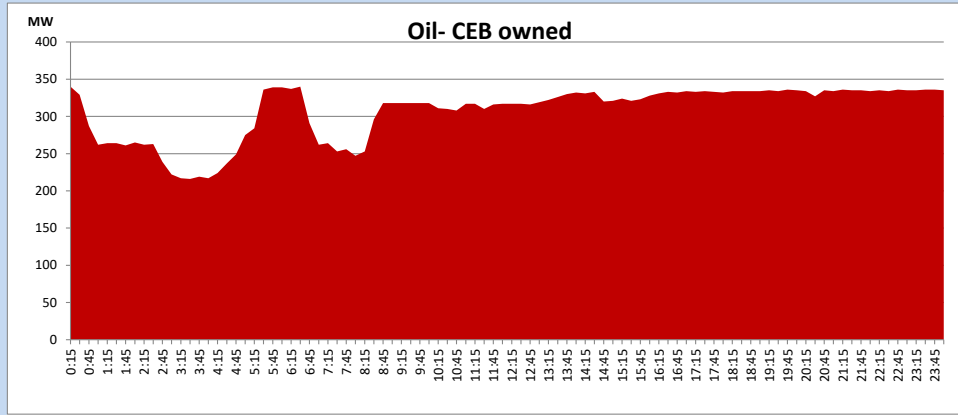
Coal Generation during

April 5, 2024



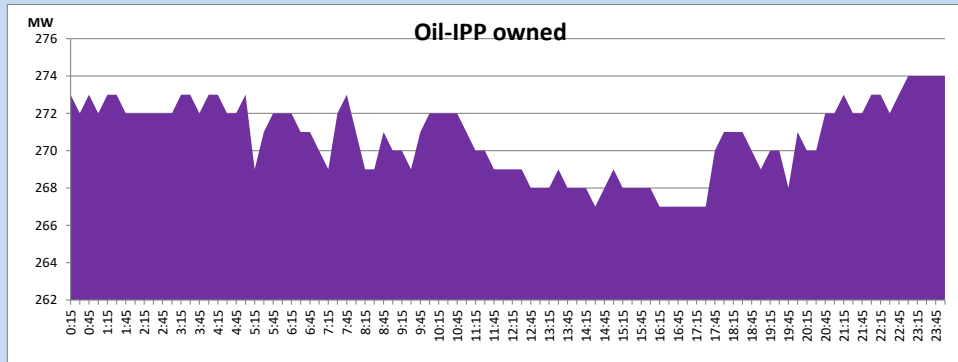
CEB Oil Plant Generation during

April 5, 2024



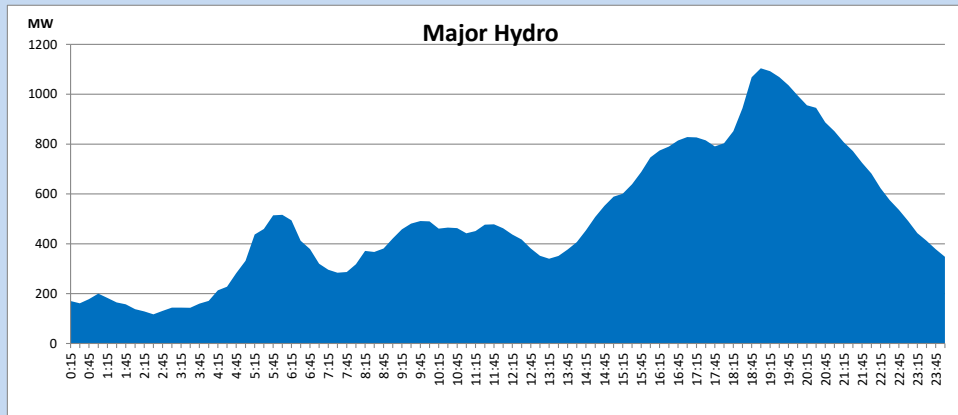
IPP Oil Plant Generation during

April 5, 2024



Major Hydro Generation during

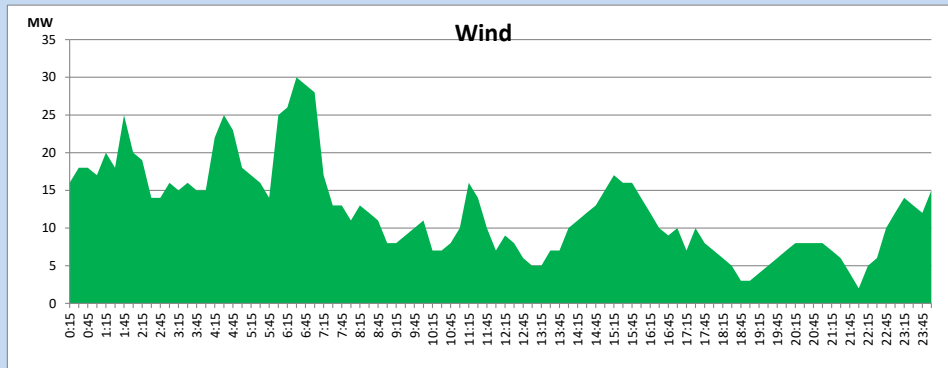
April 5, 2024



Wind Generation during

April 5, 2024

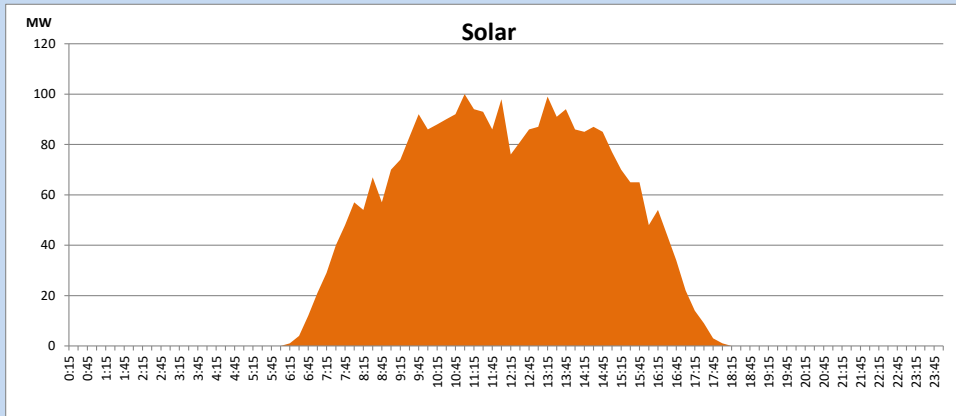
Based on Telemetered Power Stations only



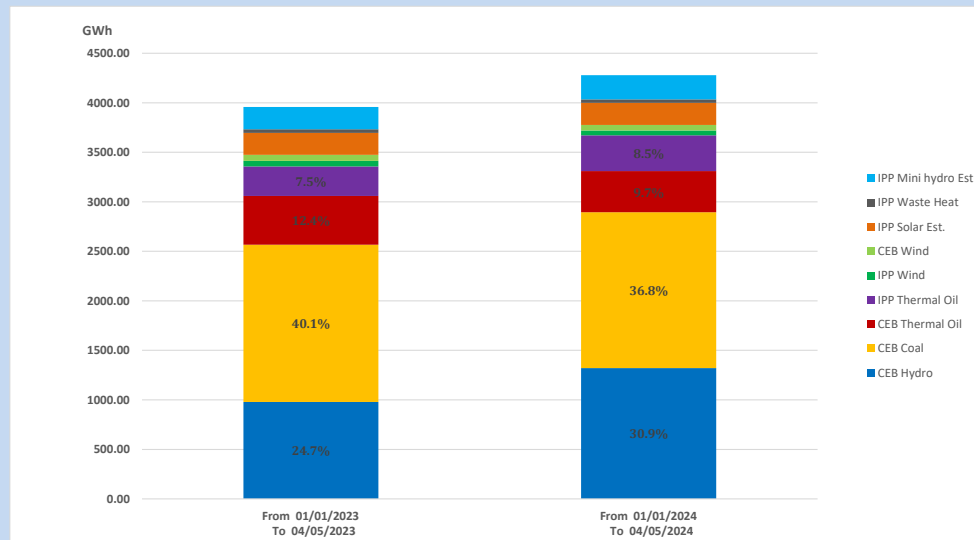
Solar Generation during

April 5, 2024

Based on Telemetered Power Stations only



15. Cumulative Dispatch Comparison with Last Year



Cumulative dispatch
 From 01/01/2023 To 04/05/2023
 From 01/01/2024 To 04/05/2024

3958 GWh
 4278 GWh

The above figures are including contribution from roof top solar, non telemetered solar and mini hydro plants)
 Unused energy due to power cuts has been excluded in 2023

Thermal Plant Fuel types

Table 08

Power Station	Primary Fuel
CEB Thermal	
Sapugaskanda 1	Heavy Fuel
Sapugaskanda 2	Heavy Fuel
Kelanitissa Small Gas Turbines	Auto Diesel
GT 7 - Kelanitissa	Auto Diesel
Kelanitissa CCY	Naphtha or Diesel
Lakvijaya 1	Coal
Lakvijaya 2	Coal
Lakvijaya 3	Coal
Uthuru Janani	Heavy Fuel
Barge CEB	Heavy Fuel
KCCPS -2	Auto Diesel

Power Station	Primary Fuel
Private Thermal	
West Coast	Auto Diesel / Heavy Fuel

Major Incidents reported during the day

April 5, 2024

- 1) New Laxapana unit 01 resumed generation at 06:55hrs. New Laxapana unit 01 again tripped at 16:45hrs rejecting 50MW from the system due to a communication fault. The unit resumed generation at 19:36hrs.
- 2) Ukuwela 132/33kV T/F 03 tripped from both sides at 17:08hrs with the indication of Earthing T/F Buchholz trip. The T/F is yet to be normalized.