

Generation and Reservoirs Statistics

April 4, 2024



PUBLIC UTILITIES COMMISSION OF SRI LANKA

1. Daily Generation Mix in MWh

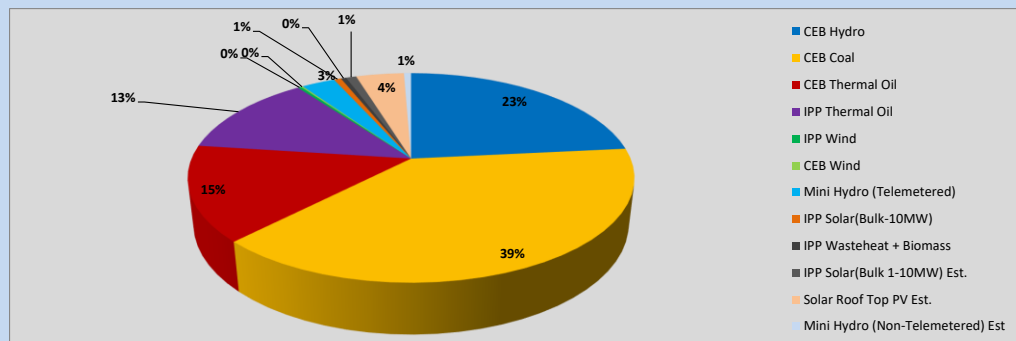


Table 01

	Generation (MWh)
CEB Hydro	11,726
CEB Coal	19,498
CEB Thermal Oil	7,373
IPP Thermal Oil	6,419
IPP Wind	154
CEB Wind	84
Mini Hydro (Telemetered)	1,449
IPP Solar (Bulk)	313
IPP Waste heat + Biomass	229
Total Generation (Excluding estimated figures)	47,245
* Estimated unserved energy	0
* Estimated Mini Hydro (Non telemetered)	309
* Estimated IPP Solar PV (Bulk 1-10MW)	446
* Estimated Solar Roof Top PV	2080
Total Generation (Including estimated figures)	50,080

* Estimated figures of CEB generation report

Table 02

	Installed Capacity (MW)
CEB Hydro	1644
CEB Coal	810
CEB Thermal Oil	773.1
IPP Thermal Oil (West Coast)	270
IPP Wind	163
CEB Wind	100
Mini Hydro	422
IPP Waste heat + Biomass	54
IPP Solar	137
Rooftop Solar (Ordinary)	293
Rooftop Solar (LT Bulk)	272
Rooftop Solar (HT Bulk)	74

Data Source - Monthly Review Report [Nov-2023]

2. Cumulative Dispatch

Following data excludes the contribution from roof top solar, non telemetered solar and mini hydro plants

Table 03 - Current Month

Category	Dispatch (GWh)	
CEB Hydro	46	22.91%
CEB Coal	78	39.20%
CEB Thermal Oil	29	14.63%
IPP Thermal	24	12.26%
SPP Wind	1	0.38%
CEB Wind	1	0.29%
Mini Hydro *	8	3.90%
IPP Solar *	11	5.77%
IPP Waste heat + BMP	1	0.65%
Total	199	

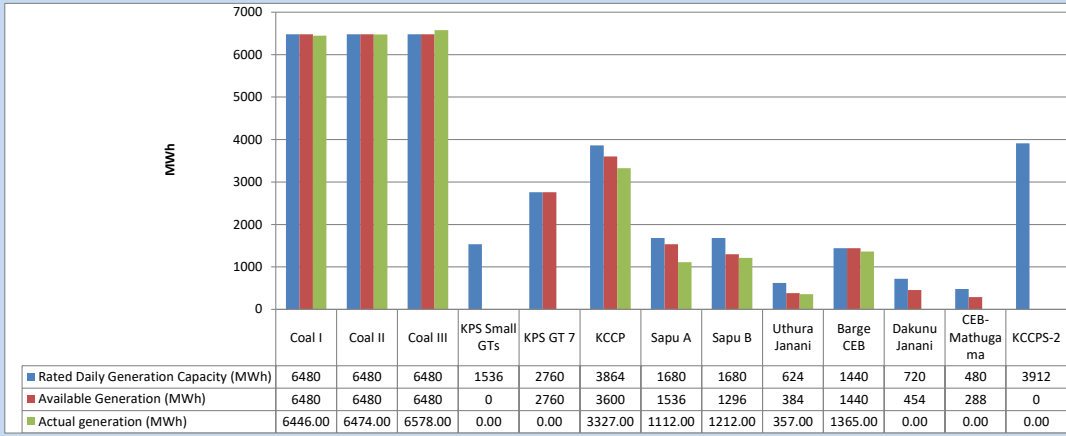
Table 04 - Current Year

Category	Dispatch (GWh)	
CEB Hydro	1,309	30.95%
CEB Coal	1,554	36.76%
CEB Thermal Oil	408	9.66%
IPP Thermal	356	8.41%
SPP Wind	47	1.11%
CEB Wind	56	1.32%
Mini Hydro *	243	5.75%
IPP Solar *	221	5.22%
IPP Waste heat	35	0.82%
Total	4,228	

*Including estimated contribution from non telemetered plants

3. CEB owned Thermal Plant Dispatch

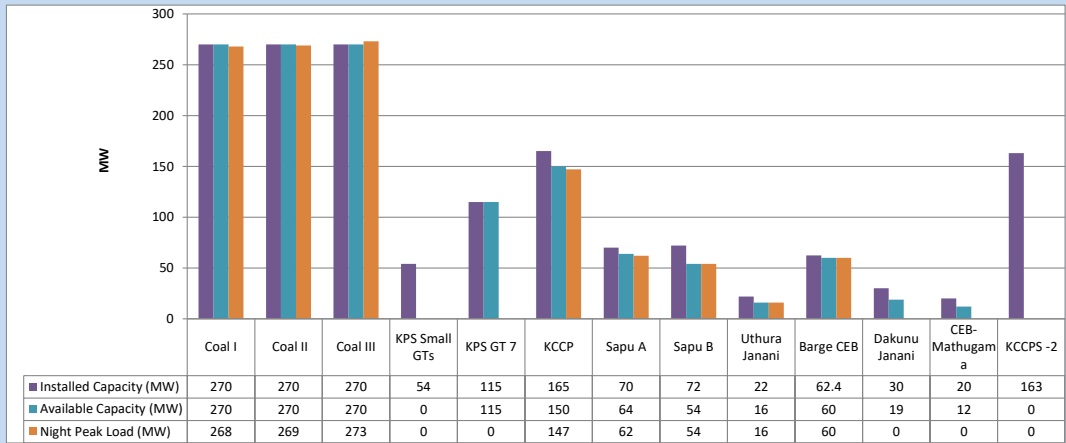
April 4, 2024



Available Generation is estimated based on plant availability at 6.00am on

April 5, 2024

4. CEB owned Thermal Plant Loading at the Night Peak

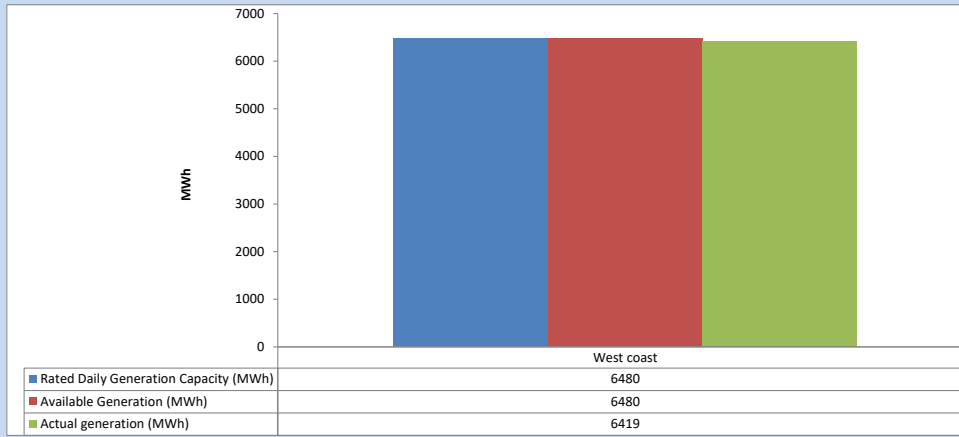


Plant availability is recorded at 6.00 am on

April 5, 2024

5. IPP owned Thermal Plant Dispatch

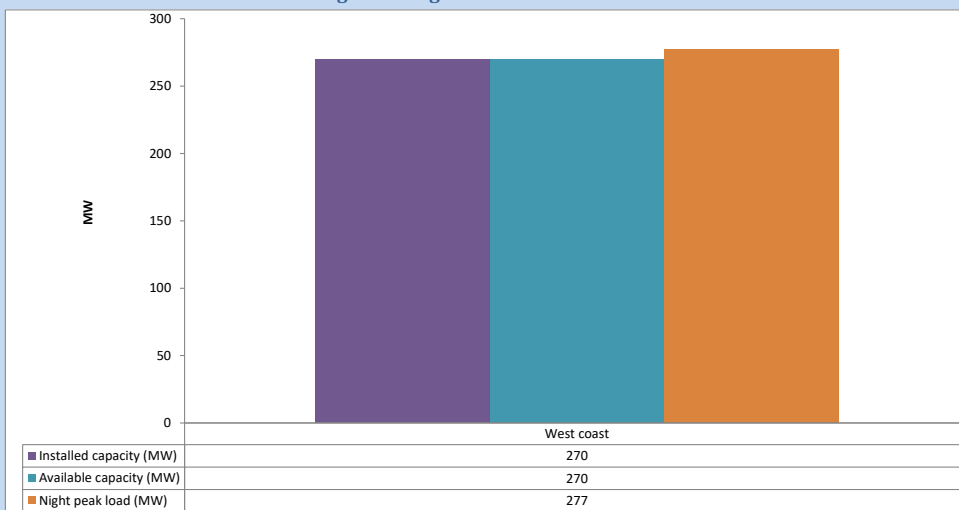
April 4, 2024



Available Generation is estimated based on plant availability at 6.00am on

April 5, 2024

6. IPP owned Thermal Plant Loading at the Night Peak

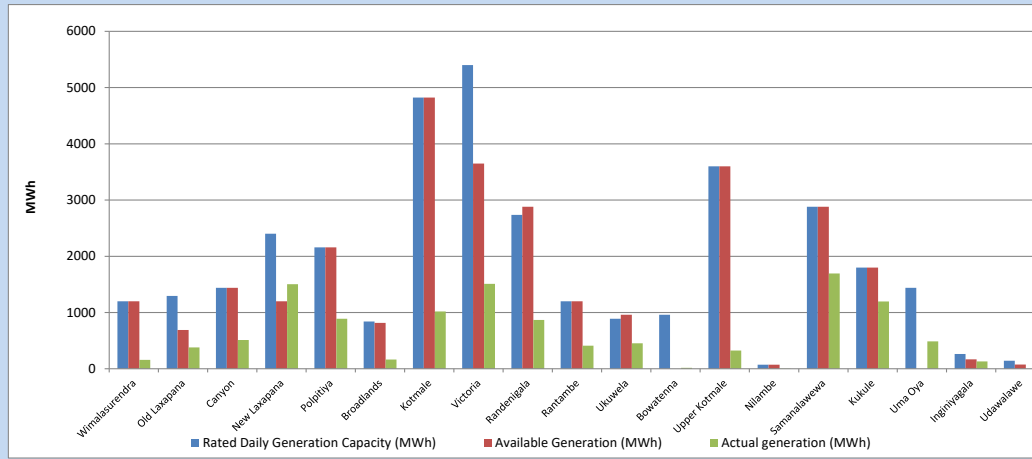


Plant availability is recorded at 6.00 am on

April 5, 2024

7. Major Hydro Plant Dispatch

April 4, 2024

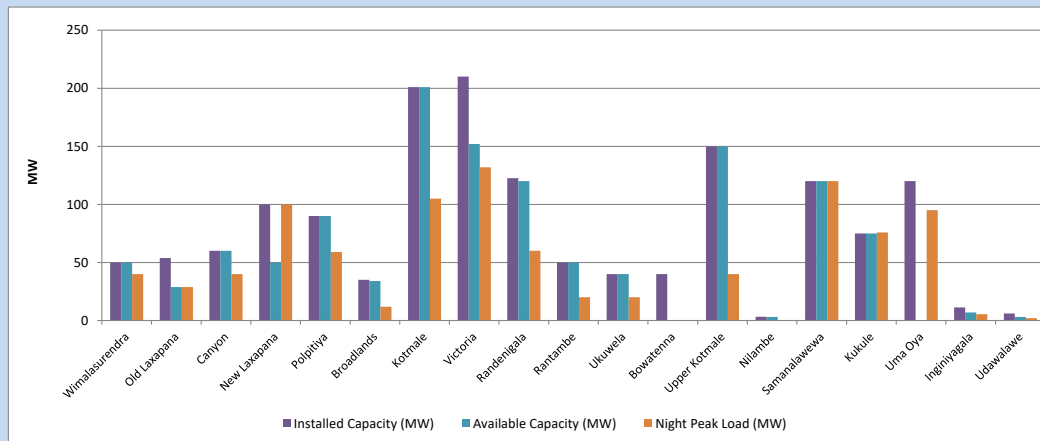


Available Generation is estimated based on plant availability at 6.00am on
Broadlands power plant is operating in the Commissioning Stage

April 5, 2024

8. Major Hydro Plant Loading at Night Peak

April 4, 2024



Plant availability is recorded at 6.00 am on
Broadlands power plant is operating in the Commissioning Stage

April 5, 2024

9. Summary of Major Plant performance

Table 05

Plant	Maximum Available Total Capacity	Plant Availability	Night peak Load	Plant Dispatch
	(MW)	(MW)	(MW)	(MWh)
Wimalasurendra	50	50	40	159
Old Laxapana	54	29	29	378
Canyon	60	60	40	512
New Laxapana	100	50	100	1,505
Polpitiya	90	90	59	890
Broadlands	35	34	12	165
Kotmale	201	201	105	1,020
Victoria	210	152	132	1,510
Randenigala	123	120	60	869
Rantambe	50	50	20	411
Ukuwela	40	40	20	454
Bowatenna	40	0	0	18
Upper Kotmale	150	150	40	323
Nilambe	3	3	0	5
Samanalawewa	120	120	120	1,693
Kukule	75	75	76	1,198
Uma Oya (Testing)	120	0	95	487
Inginiyagala	11	7	6	129
Udawalawe	6	3	2	0
Puttalam Coal I	270	270	268	6,446
Puttalam Coal II	270	270	269	6,474
Puttalam Coal III	270	270	273	6,578
KPS Small GTs	54	0	0	0
KPS GT 7	115	115	0	0
KCCP	165	150	147	3,327
Sapugaskanda A	70	64	62	1,112
Sapugaskanda B	72	54	54	1,212
Uthura Janani	22	16	16	357
Barge CEB	62	60	60	1,365
CEB-Hambantota	30	19	0	0
CEB-Mathugama	20	12	0	0
ACE Matara	24	0	0	0
Asia Power	50	0	0	0
KCCPS -2	163	0	0	0
West Coast	270	270	277	6,419
Nothern Power	36	0	0	0
ACE Embilipitiya	93	0	0	0
Total	3,594	2,804	2,467	47,245

Note-

Plant availability is the availability recorded at 6 am on

April 5, 2024

Installed Capacity is sourced from CEB Annual Report- 2022

10. Contribution to the Night Peak in MW

April 4, 2024

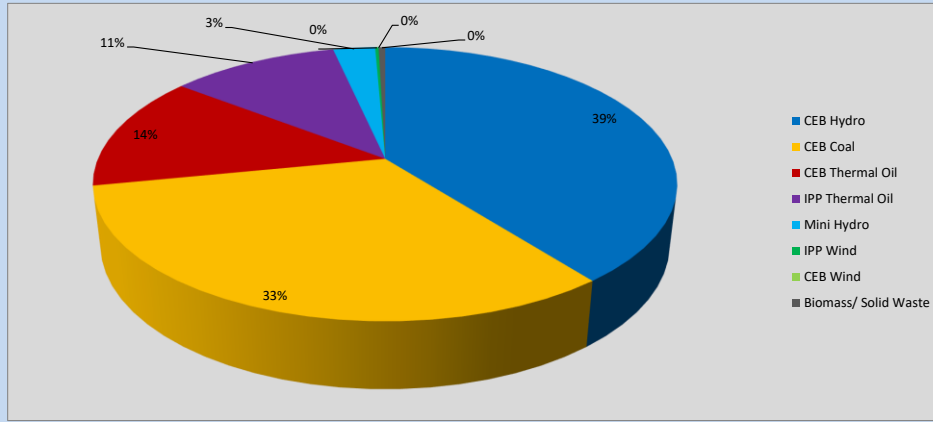


Table 06

CEB Hydro	984	MW
CEB Coal	810	MW
CEB Thermal Oil	339	MW
IPP Thermal Oil	277	MW
Mini Hydro (Telemetered)	69	MW
IPP Wind	5.7	MW
CEB Wind	0	MW
Biomass/ Solid Waste	11	MW

Recorded Peak Demand Data

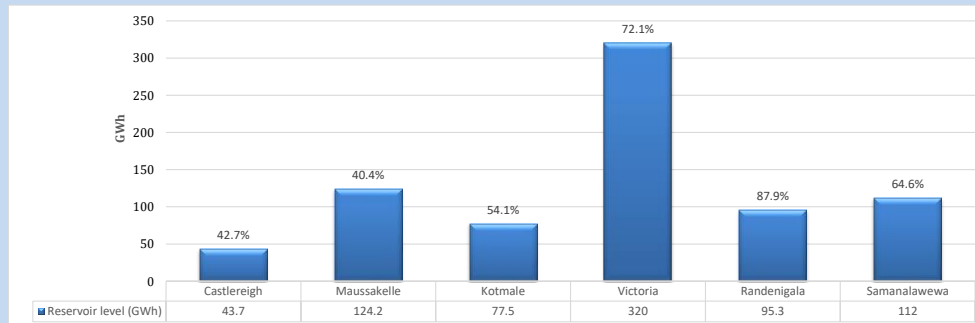
Table 07

Night Peak*	2,496	MW
Day Peak Maximum Demand	2,370	MW
Day Peak Minimum Demand	1,766	MW
Off Peak Minimum Demand	1,577	MW

Above figures are excluding contribution from roof top solar, non telemetered solar and mini hydro plants

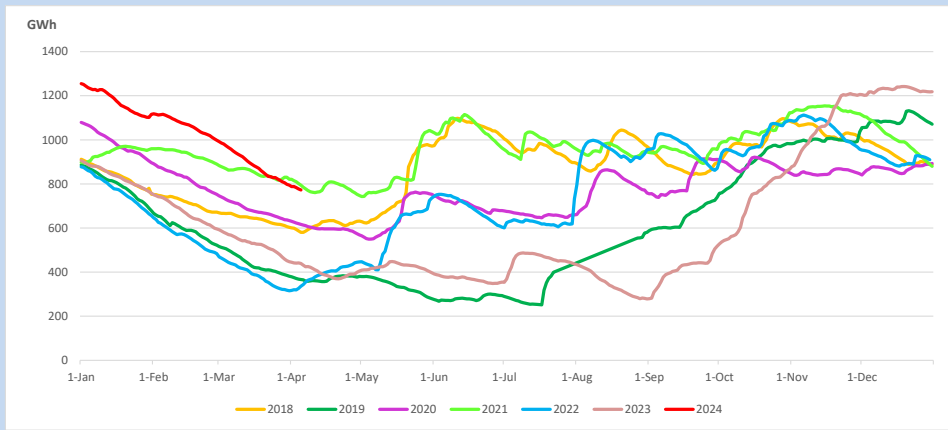
Reservoir Levels -

as at 06.00 Hr on April 5, 2024

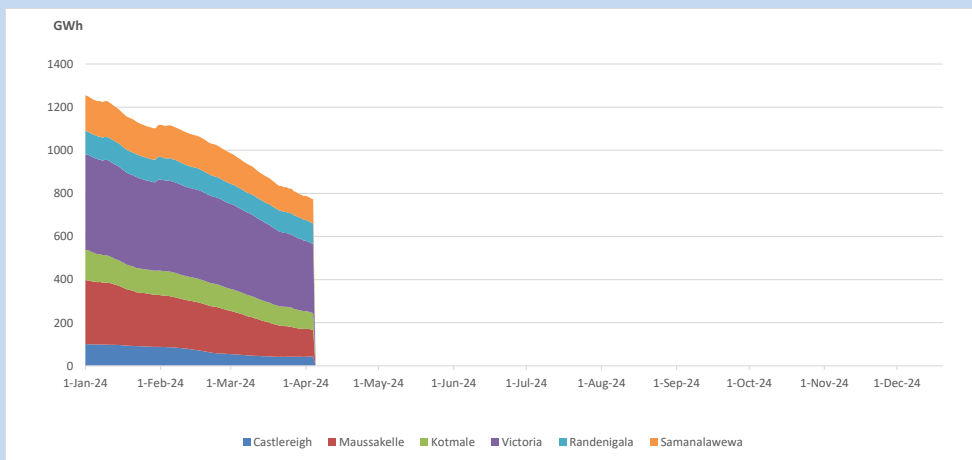


Total Reservoir Level
772.7 GWh
% of Total capacity
60.4%

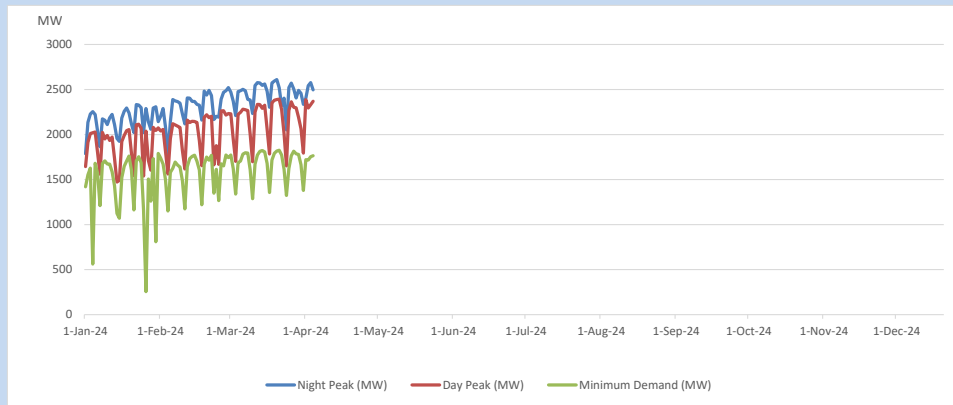
11. Comparison of Total Reservoir Storage Levels with Past Years



12. Variation of Major Hydro Reservoir Levels in the current year (GWh)



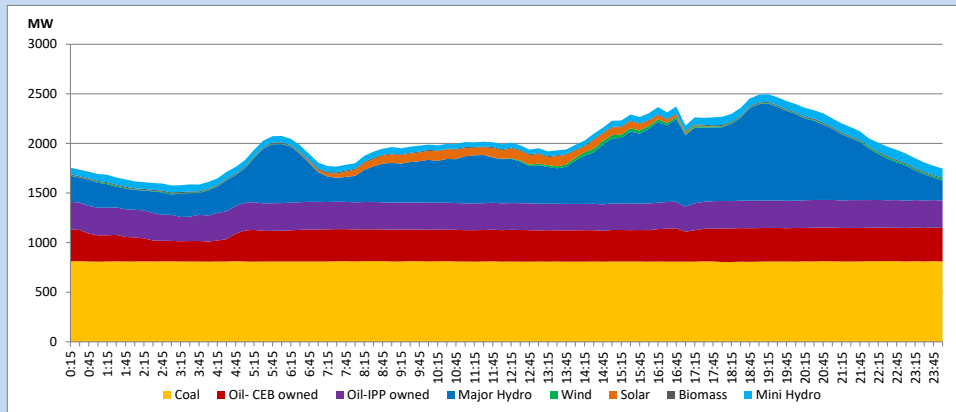
13. Variation of Demand during the current year



The above figures are excluding contribution from roof top solar, non telemetered solar and mini hydro plants

14. Daily Load Curve

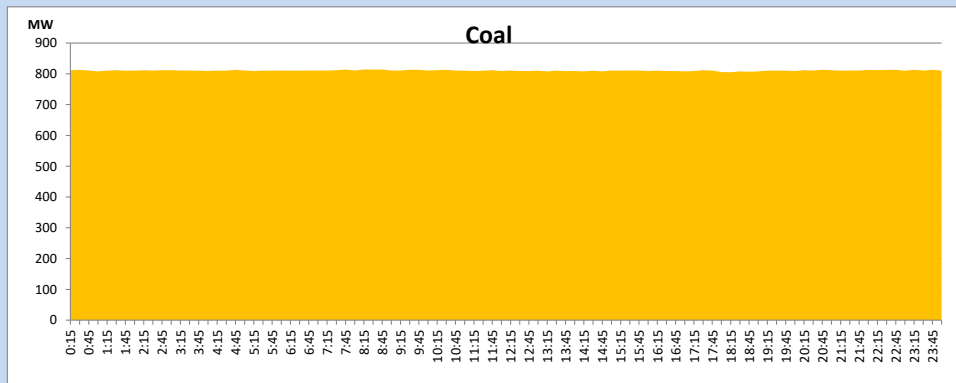
April 4, 2024



Solar and wind data is based on Telemetered Power Stations only

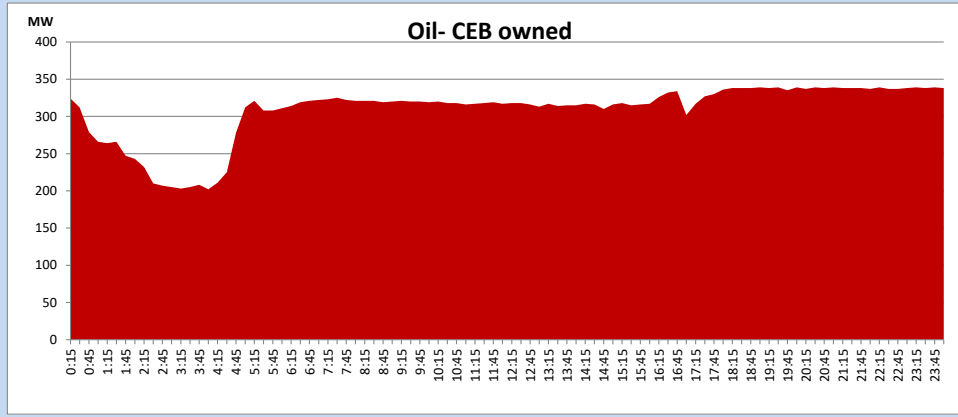
Coal Generation during

April 4, 2024



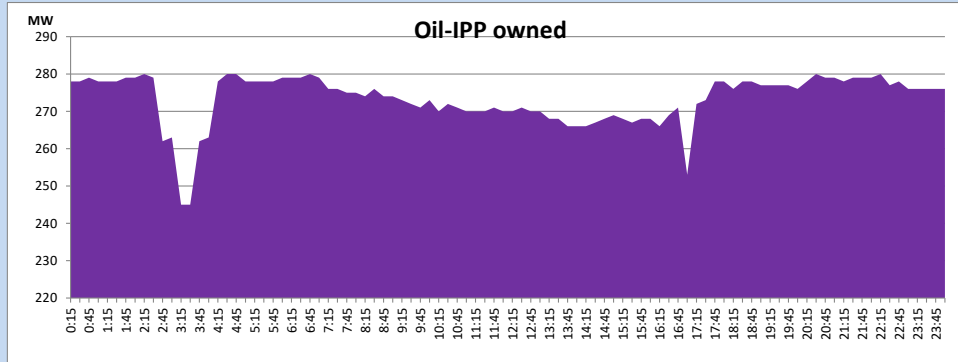
CEB Oil Plant Generation during

April 4, 2024



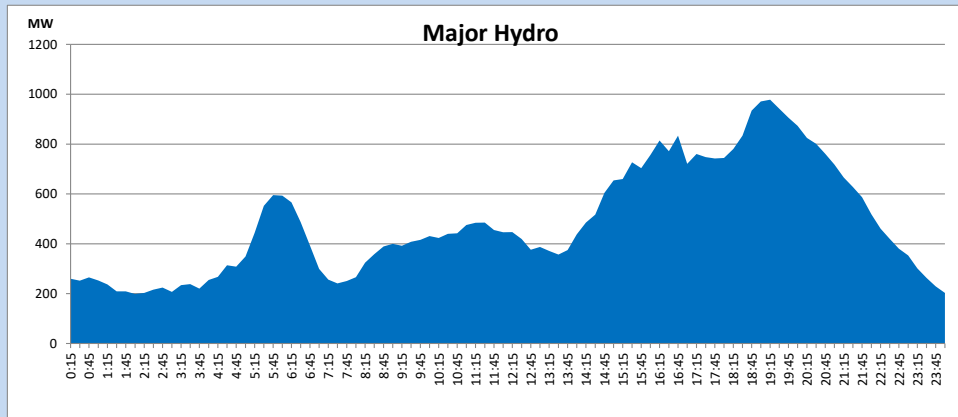
IPP Oil Plant Generation during

April 4, 2024



Major Hydro Generation during

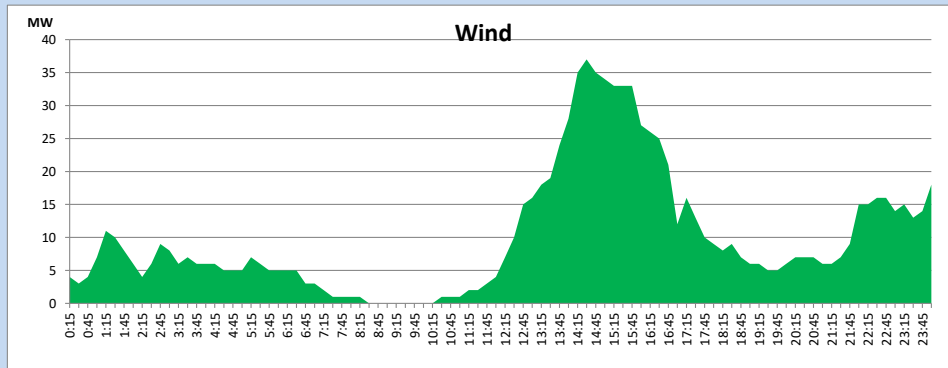
April 4, 2024



Wind Generation during

April 4, 2024

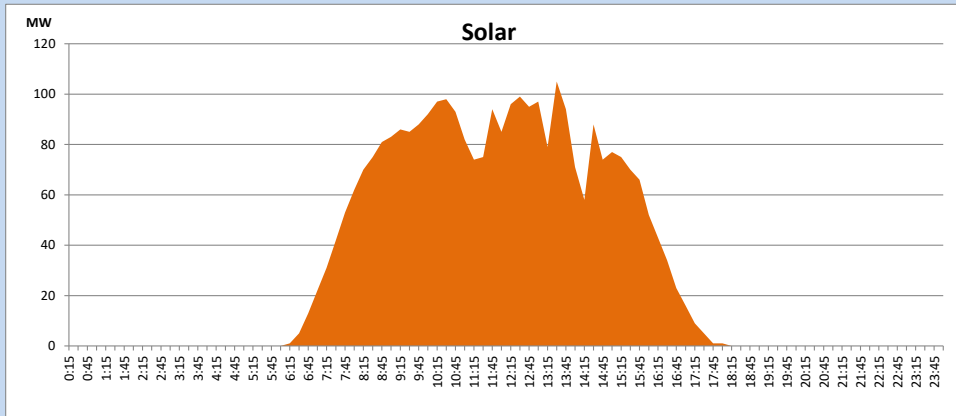
Based on Telemetered Power Stations only



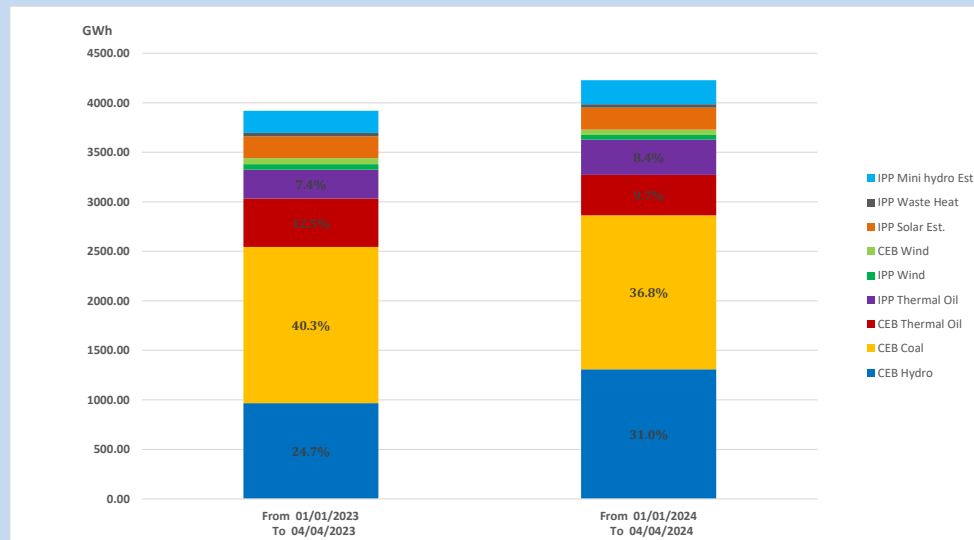
Solar Generation during

April 4, 2024

Based on Telemetered Power Stations only



15. Cumulative Dispatch Comparison with Last Year



Cumulative dispatch

From 01/01/2023 To 04/04/2023

3919 GWh

From 01/01/2024 To 04/04/2024

4228 GWh

The above figures are including contribution from roof top solar, non telemetered solar and mini hydro plants)

Unserviced energy due to power cuts has been excluded in 2023

Thermal Plant Fuel types

Table 08

Power Station	Primary Fuel
CEB Thermal	
Sapugaskanda 1	Heavy Fuel
Sapugaskanda 2	Heavy Fuel
Kelanitissa Small Gas Turbines	Auto Diesel
GT 7 - Kelanitissa	Auto Diesel
Kelanitissa CCY	Naphtha or Diesel
Lakvijaya 1	Coal
Lakvijaya 2	Coal
Lakvijaya 3	Coal
Uthuru Janani	Heavy Fuel
Barge CEB	Heavy Fuel
KCCPS -2	Auto Diesel

Power Station	Primary Fuel
Private Thermal	
West Coast	Auto Diesel / Heavy Fuel

Major Incidents reported during the day

April 4, 2024

- 1) Athurugiriya - New Polpitiya - Thulhiriya 132kV cct tripped and A/R from Athurugiriya and New Polpitiya ends at 16:57hrs due to the operation of distance protection. At the same time, Athurugiriya - Polpitiya - Thulhiriya 132kV cct tripped from Polpitiya end and Tripped and A/R from Athurugiriya end due to the operation of distance protection. The cct was normalized at 17:14hrs.
- 2) New Laxapana unit 01 tripped at 5:50hrs (05.04.2024) rejecting 35MW from the system due to the operation of mechanical protection. The unit is yet to resume generation.