

Generation and Reservoirs Statistics

March 31, 2024



PUBLIC UTILITIES COMMISSION OF SRI LANKA

1. Daily Generation Mix in MWh

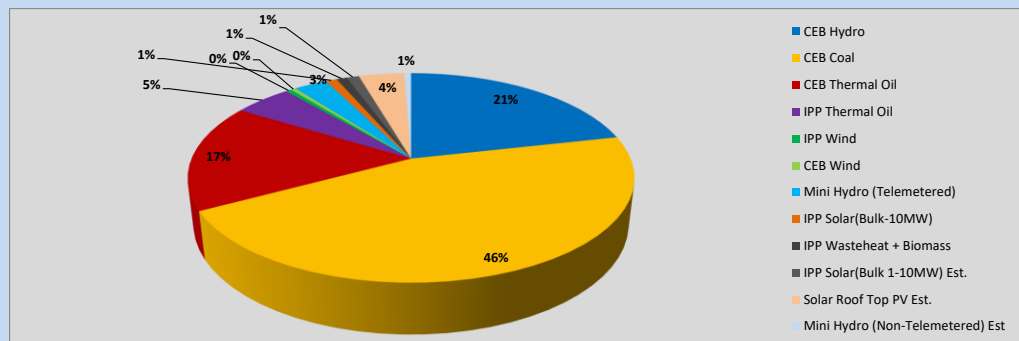


Table 01

	Generation (MWh)
CEB Hydro	9,146
CEB Coal	19,437
CEB Thermal Oil	7,065
IPP Thermal Oil	2,124
IPP Wind	210
CEB Wind	185
Mini Hydro (Telemetered)	1,217
IPP Solar (Bulk)	415
IPP Waste heat + Biomass	382
Total Generation (Excluding estimated figures)	40,181
* Estimated unserved energy	0
* Estimated Mini Hydro (Non telemetered)	259
* Estimated IPP Solar PV (Bulk 1-10MW)	460
* Estimated Solar Roof Top PV	1670
Total Generation (Including estimated figures)	42,570

* Estimated figures of CEB generation report

Table 02

	Installed Capacity (MW)
CEB Hydro	1644
CEB Coal	810
CEB Thermal Oil	773.1
IPP Thermal Oil (West Coast)	270
IPP Wind	163
CEB Wind	100
Mini Hydro	422
IPP Waste heat + Biomass	54
IPP Solar	137
Rooftop Solar (Ordinary)	293
Rooftop Solar (LT Bulk)	272
Rooftop Solar (HT Bulk)	74

Data Source - Monthly Review Report [Nov-2023]

2. Cumulative Dispatch

Following data excludes the contribution from roof top solar, non telemetered solar and mini hydro plants

Table 03 - Current Month

Category	Dispatch (GWh)	
CEB Hydro	325	22.33%
CEB Coal	596	41.00%
CEB Thermal Oil	220	15.12%
IPP Thermal	163	11.17%
SPP Wind	10	0.72%
CEB Wind	11	0.75%
Mini Hydro *	44	3.04%
IPP Solar *	77	5.28%
IPP Waste heat + BMP	11	0.74%
Total	1,455	

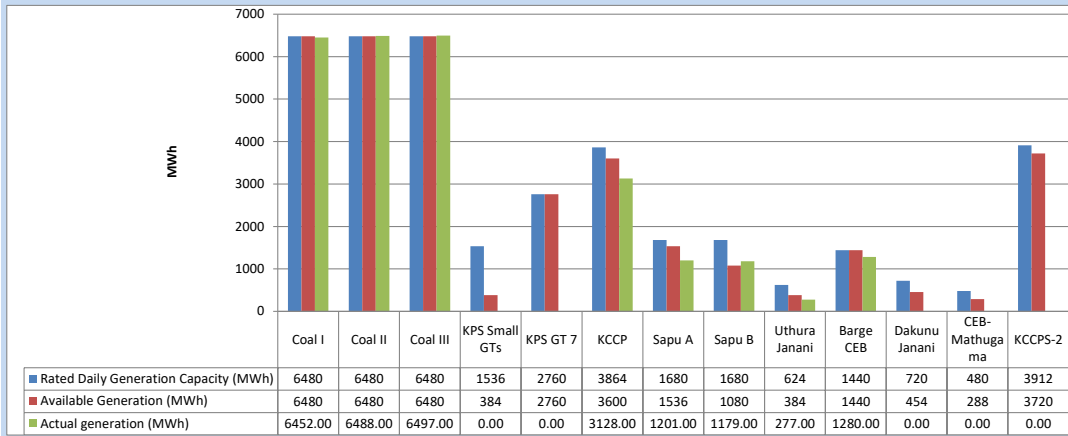
Table 04 - Current Year

Category	Dispatch (GWh)	
CEB Hydro	1,263	31.35%
CEB Coal	1,477	36.64%
CEB Thermal Oil	379	9.41%
IPP Thermal	331	8.22%
SPP Wind	46	1.15%
CEB Wind	55	1.37%
Mini Hydro *	235	5.84%
IPP Solar *	209	5.19%
IPP Waste heat	33	0.82%
Total	4,029	

*Including estimated contribution from non telemetered plants

3. CEB owned Thermal Plant Dispatch

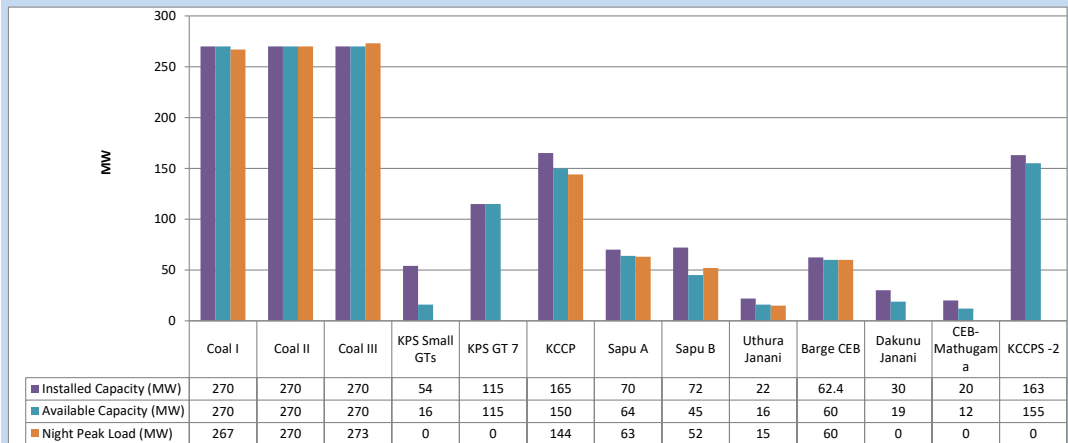
March 31, 2024



Available Generation is estimated based on plant availability at 6.00am on

April 1, 2024

4. CEB owned Thermal Plant Loading at the Night Peak

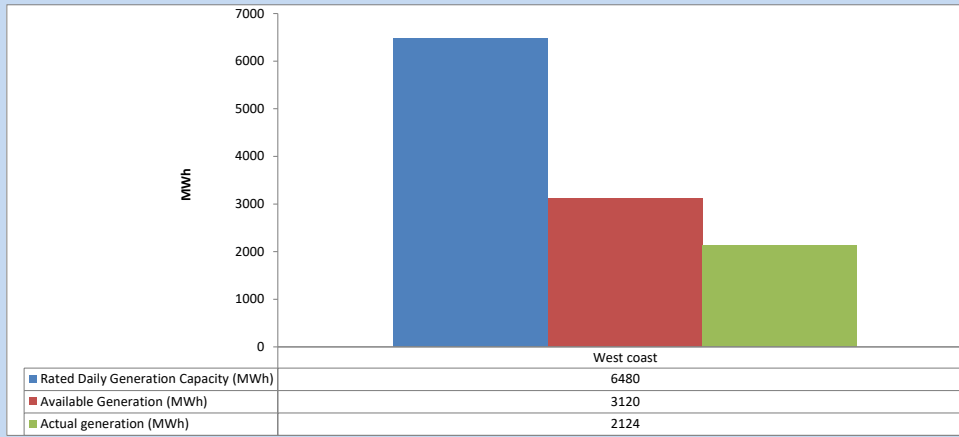


Plant availability is recorded at 6.00 am on

April 1, 2024

5. IPP owned Thermal Plant Dispatch

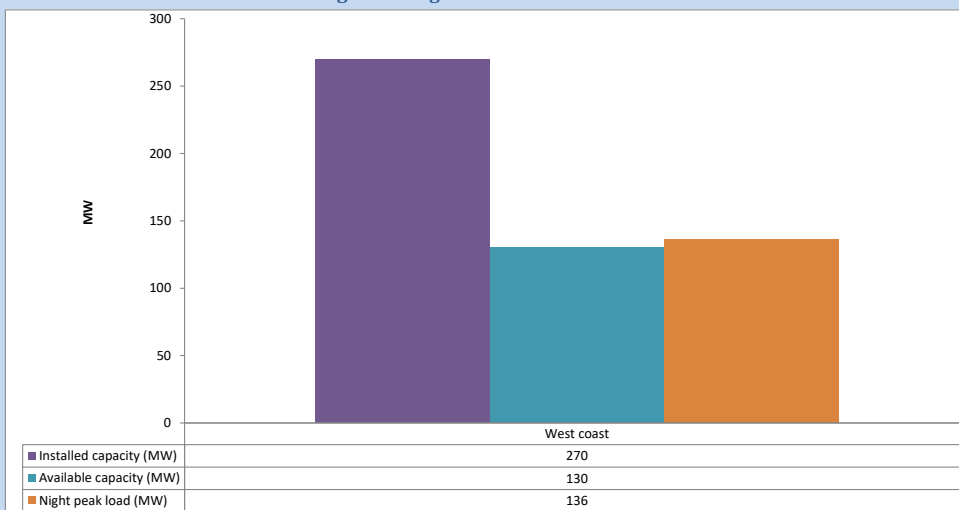
March 31, 2024



Available Generation is estimated based on plant availability at 6.00am on

April 1, 2024

6. IPP owned Thermal Plant Loading at the Night Peak

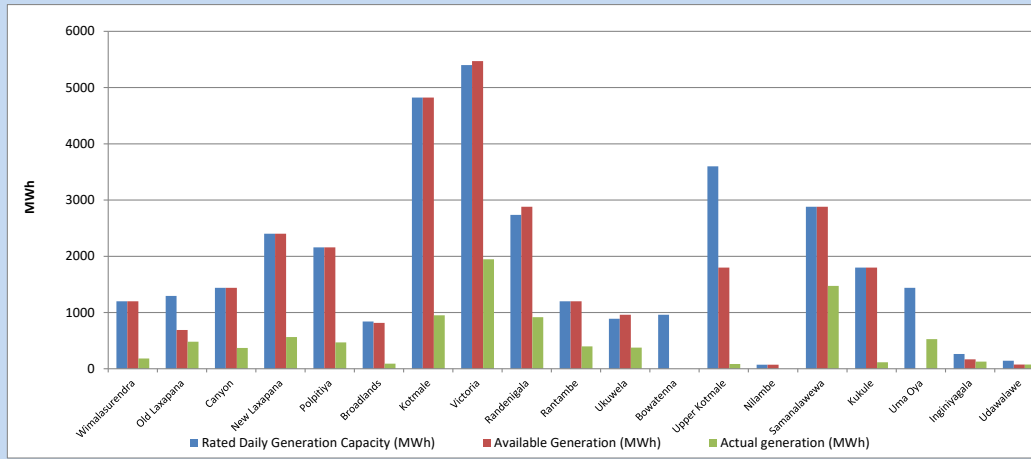


Plant availability is recorded at 6.00 am on

April 1, 2024

7. Major Hydro Plant Dispatch

March 31, 2024

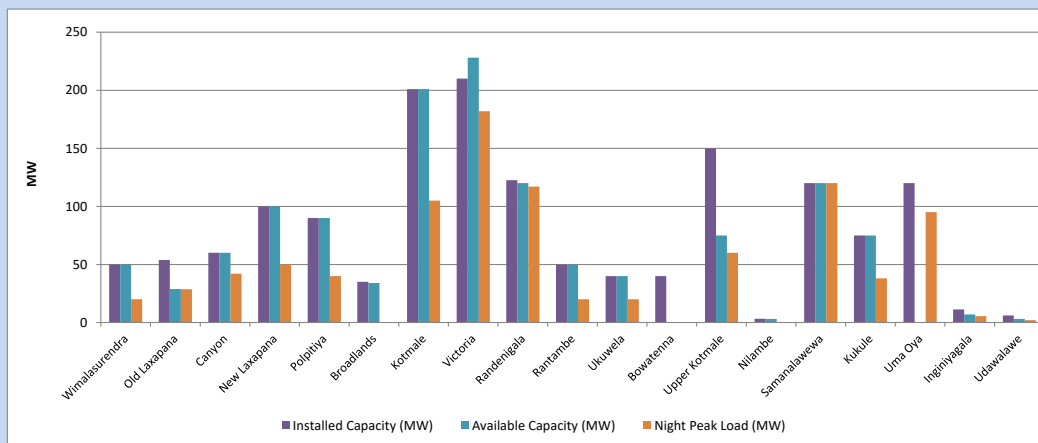


Available Generation is estimated based on plant availability at 6.00am on
Broadlands power plant is operating in the Commissioning Stage

April 1, 2024

8. Major Hydro Plant Loading at Night Peak

March 31, 2024



Plant availability is recorded at 6.00 am on
Broadlands power plant is operating in the Commissioning Stage

April 1, 2024

9. Summary of Major Plant performance

Table 05

Plant	Maximum Available Total Capacity	Plant Availability	Night peak Load	Plant Dispatch
	(MW)	(MW)	(MW)	(MWh)
Wimalasurendra	50	50	20	184
Old Laxapana	54	29	29	481
Canyon	60	60	42	371
New Laxapana	100	100	50	564
Polpitiya	90	90	40	470
Broadlands	35	34	0	89
Kotmale	201	201	105	950
Victoria	210	228	182	1,946
Randenigala	123	120	117	917
Rantambe	50	50	20	397
Ukuwela	40	40	20	375
Bowatenna	40	0	0	0
Upper Kotmale	150	75	60	85
Nilambe	3	3	0	0
Samanalawewa	120	120	120	1,472
Kukule	75	75	38	115
Uma Oya (Testing)	120	0	95	527
Inginiyagala	11	7	6	127
Udawalawe	6	3	2	76
Puttalam Coal I	270	270	267	6,452
Puttalam Coal II	270	270	270	6,488
Puttalam Coal III	270	270	273	6,497
KPS Small GTs	54	16	0	0
KPS GT 7	115	115	0	0
KCCP	165	150	144	3,128
Sapugaskanda A	70	64	63	1,201
Sapugaskanda B	72	45	52	1,179
Uthura Janani	22	16	15	277
Barge CEB	62	60	60	1,280
CEB-Hambantota	30	19	0	0
CEB-Mathugama	20	12	0	0
ACE Matara	24	0	0	0
Asia Power	50	0	0	0
KCCPS -2	163	155	0	0
West Coast	270	130	136	2,124
Nothern Power	36	0	0	0
ACE Embilipitiya	93	0	0	0
Total	3,594	2,877	2,305	40,181

Note-

Plant availability is the availability recorded at 6 am on

April 1, 2024

Installed Capacity is sourced from CEB Annual Report- 2022

10. Contribution to the Night Peak in MW

March 31, 2024

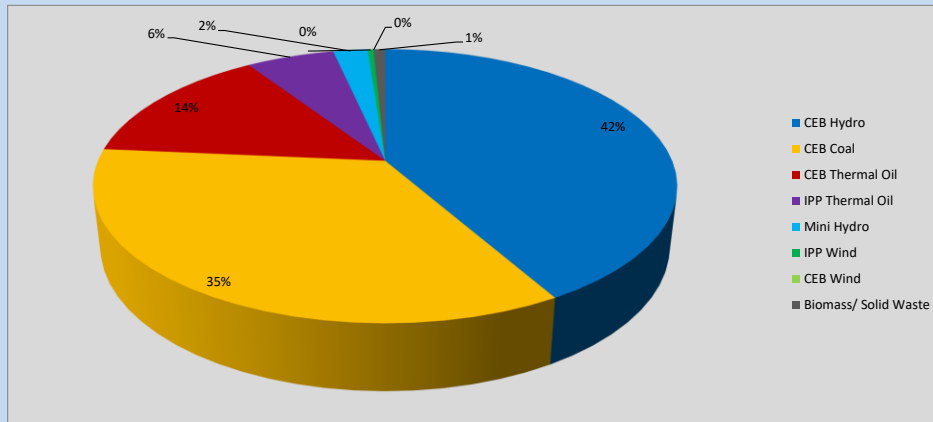


Table 06

CEB Hydro	975	MW
CEB Coal	810	MW
CEB Thermal Oil	334	MW
IPP Thermal Oil	136	MW
Mini Hydro (Telemetered)	53	MW
IPP Wind	9.1	MW
CEB Wind	0	MW
Biomass/ Solid Waste	18	MW

Recorded Peak Demand Data

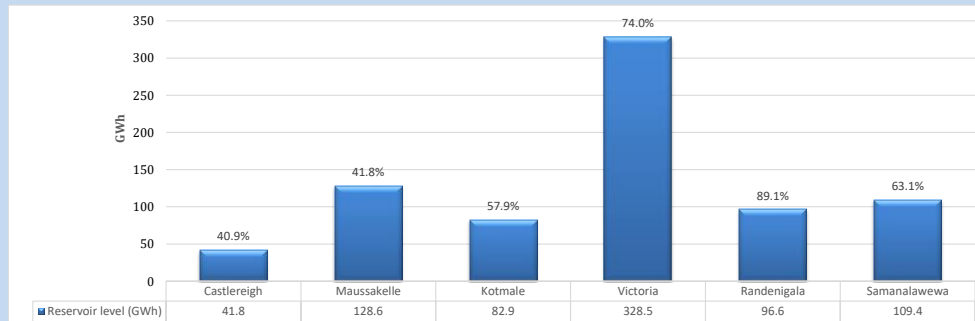
Table 07

Night Peak*	2,335	MW
Day Peak Maximum Demand	1,794	MW
Day Peak Minimum Demand	1,380	MW
Off Peak Minimum Demand	1,508	MW

Above figures are excluding contribution from roof top solar, non telemetered solar and mini hydro plants

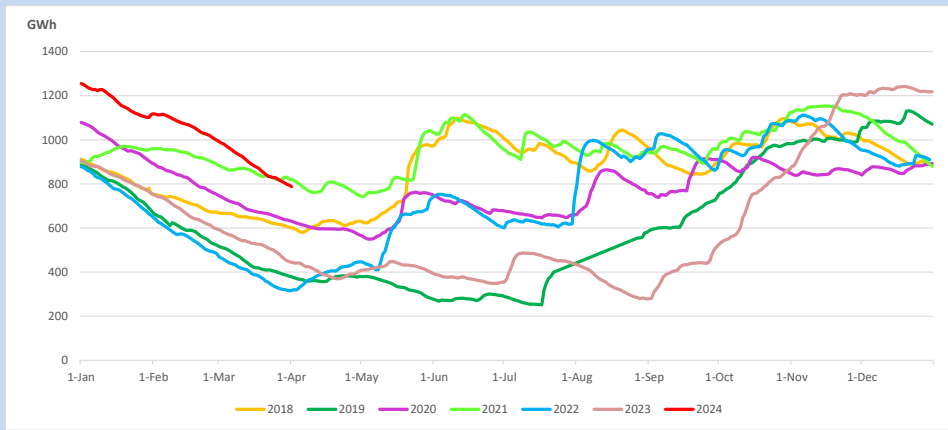
Reservoir Levels -

as at 06.00 Hr on April 1, 2024

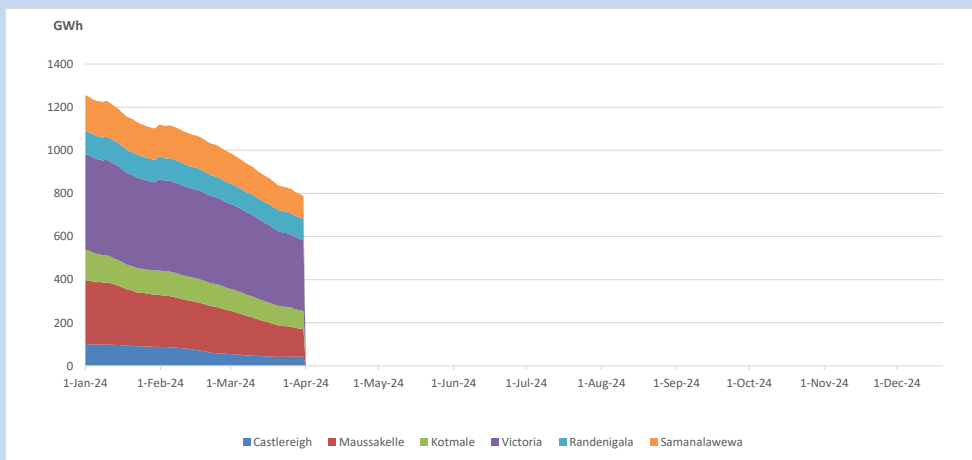


Total Reservoir Level 787.8 GWh
% of Total capacity 61.6%

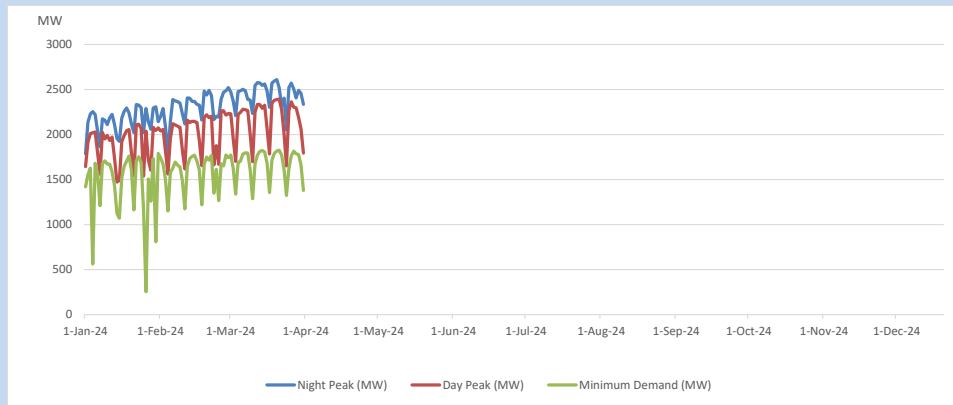
11. Comparison of Total Reservoir Storage Levels with Past Years



12. Variation of Major Hydro Reservoir Levels in the current year (GWh)



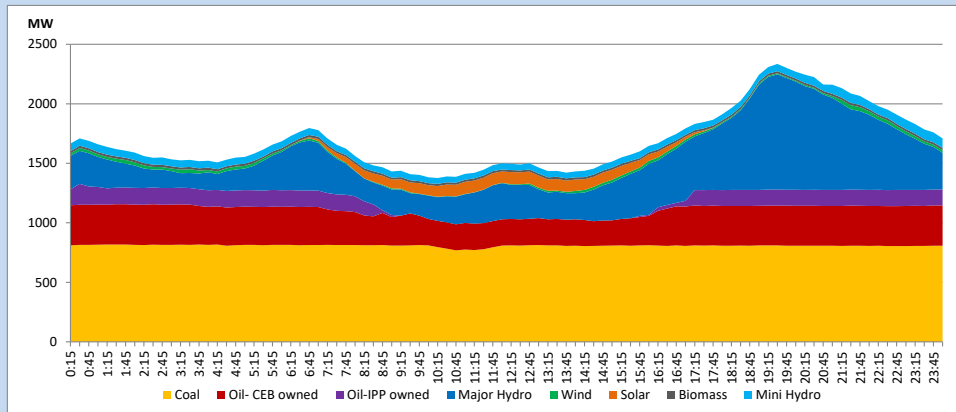
13. Variation of Demand during the current year



The above figures are excluding contribution from roof top solar, non telemetered solar and mini hydro plants

14. Daily Load Curve

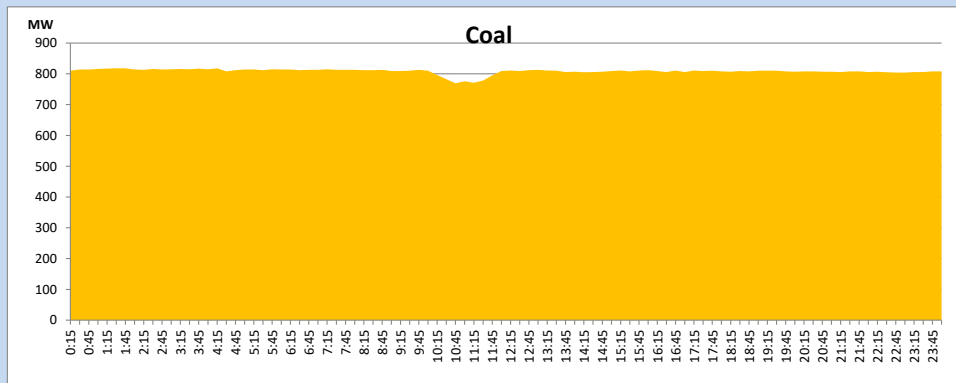
March 31, 2024



Solar and wind data is based on Telemetered Power Stations only

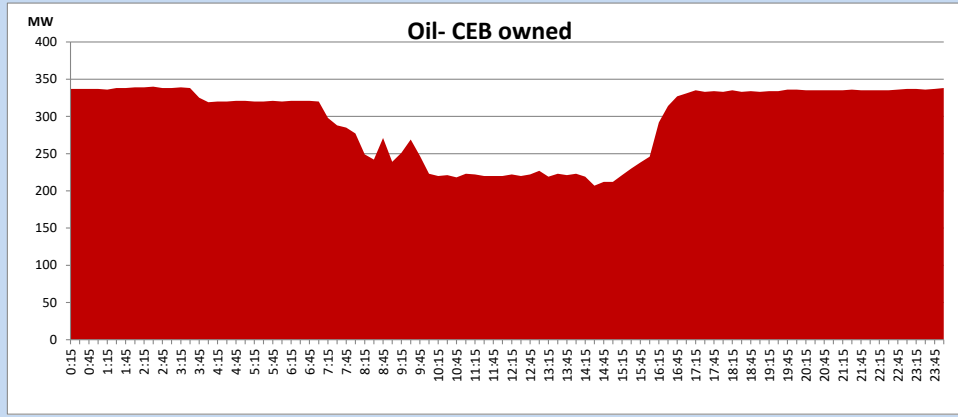
Coal Generation during

March 31, 2024



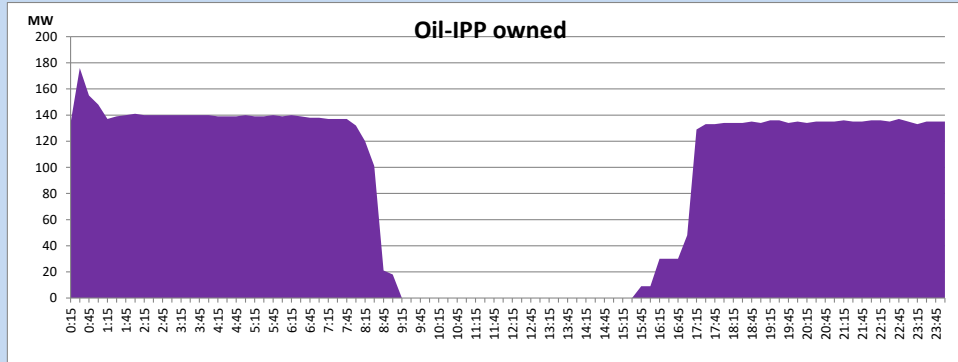
CEB Oil Plant Generation during

March 31, 2024



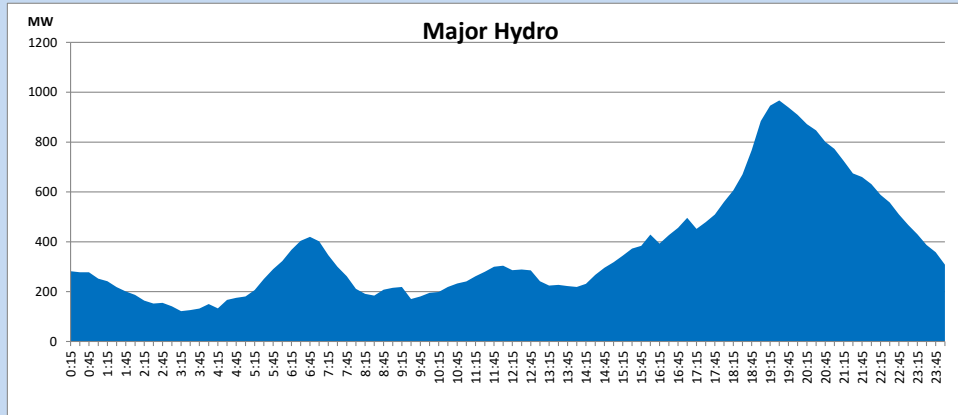
IPP Oil Plant Generation during

March 31, 2024



Major Hydro Generation during

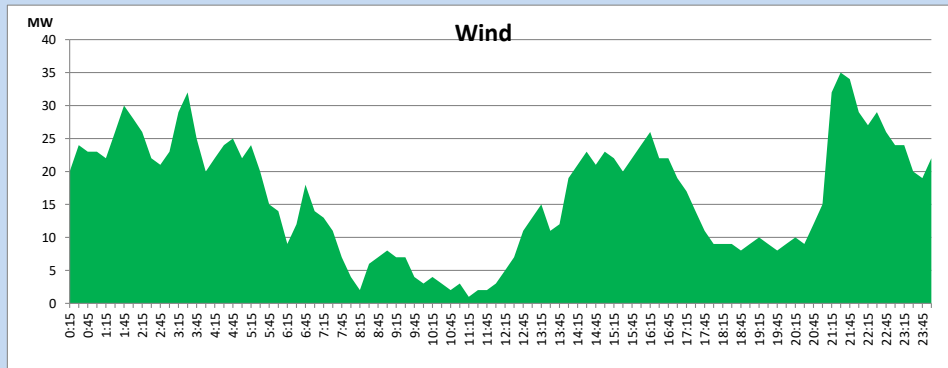
March 31, 2024



Wind Generation during

March 31, 2024

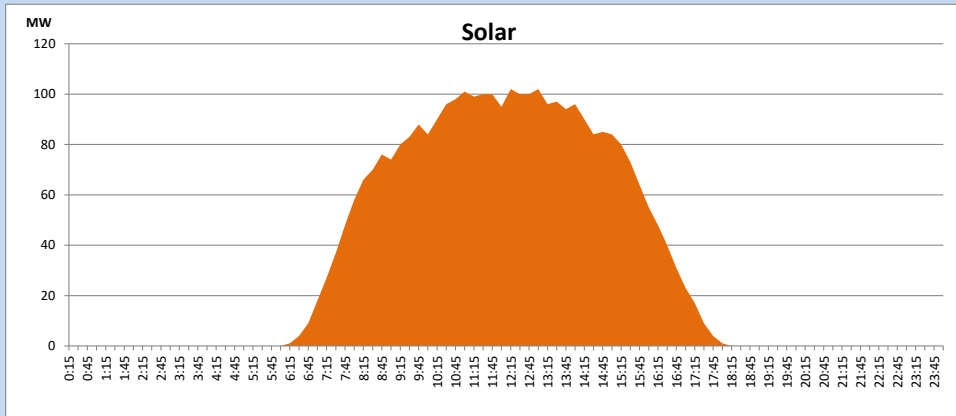
Based on Telemetered Power Stations only



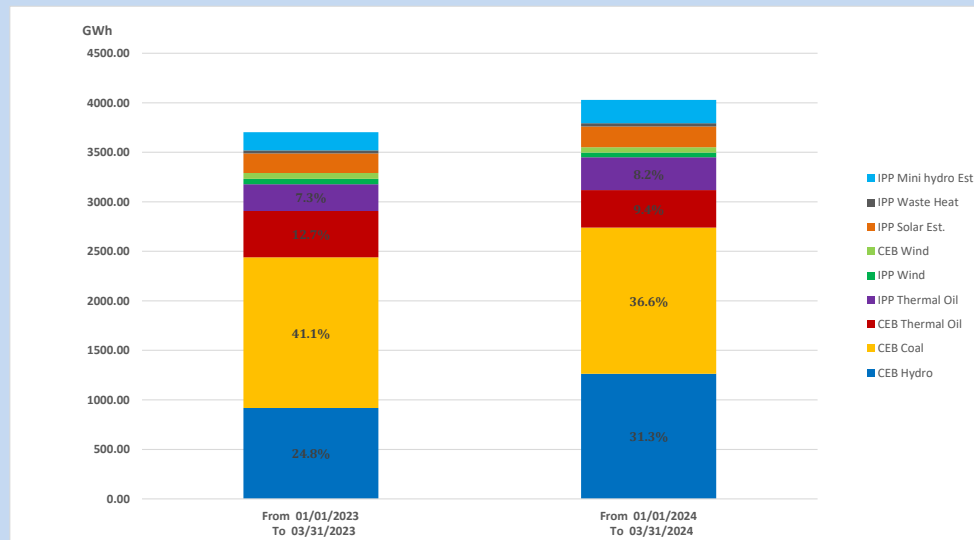
Solar Generation during

March 31, 2024

Based on Telemetered Power Stations only



15. Cumulative Dispatch Comparison with Last Year



Cumulative dispatch

From 01/01/2023 To 03/31/2023

3703 GWh

From 01/01/2024 To 03/31/2024

4029 GWh

The above figures are including contribution from roof top solar, non telemetered solar and mini hydro plants)

Unserviced energy due to power cuts has been excluded in 2023

Thermal Plant Fuel types

Table 08

Power Station	Primary Fuel
CEB Thermal	
Sapugaskanda 1	Heavy Fuel
Sapugaskanda 2	Heavy Fuel
Kelanitissa Small Gas Turbines	Auto Diesel
GT 7 - Kelanitissa	Auto Diesel
Kelanitissa CCY	Naphtha or Diesel
Lakvijaya 1	Coal
Lakvijaya 2	Coal
Lakvijaya 3	Coal
Uthuru Janani	Heavy Fuel
Barge CEB	Heavy Fuel
KCCPS -2	Auto Diesel

Power Station	Primary Fuel
Private Thermal	
West Coast	Auto Diesel / Heavy Fuel

Major Incidents reported during the day

March 31, 2024

1) Balangoda - Samanalawewa 132kV cct 01 tripped from Samanalawewa end only and Balangoda - Samanalawewa 132kV cct 02 tripped & A/R from both ends at 20:45hrs, due to the operation of distance protection. Balangoda - Samanalawewa 132kV cct 01 was normalized at 21:16hrs.