

Generation and Reservoirs Statistics

March 30, 2024



PUBLIC UTILITIES COMMISSION OF SRI LANKA

1. Daily Generation Mix in MWh

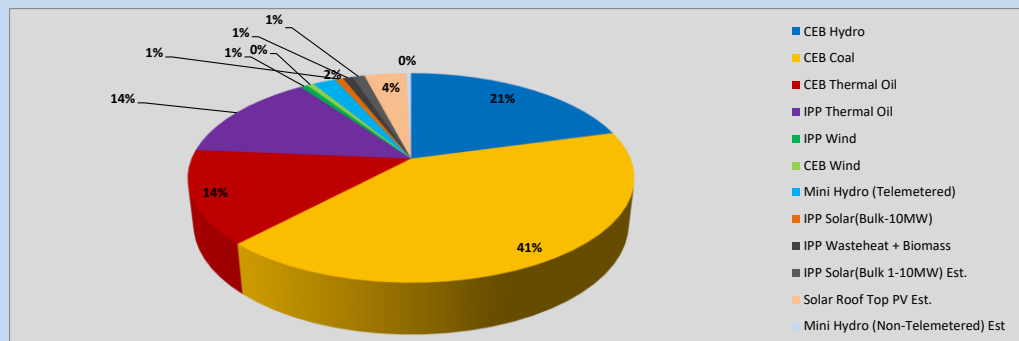


Table 01

	Generation (MWh)
CEB Hydro	9,565
CEB Coal	19,023
CEB Thermal Oil	6,641
IPP Thermal Oil	6,362
IPP Wind	283
CEB Wind	267
Mini Hydro (Telemetered)	920
IPP Solar (Bulk)	327
IPP Waste heat + Biomass	385
Total Generation (Excluding estimated figures)	43,773
* Estimated unserved energy	0
* Estimated Mini Hydro (Non telemetered)	196
* Estimated IPP Solar PV (Bulk 1-10MW)	491
* Estimated Solar Roof Top PV	1670
Total Generation (Including estimated figures)	46,130

* Estimated figures of CEB generation report

Table 02

	Installed Capacity (MW)
CEB Hydro	1644
CEB Coal	810
CEB Thermal Oil	773.1
IPP Thermal Oil (West Coast)	270
IPP Wind	163
CEB Wind	100
Mini Hydro	422
IPP Waste heat + Biomass	54
IPP Solar	137
Rooftop Solar (Ordinary)	293
Rooftop Solar (LT Bulk)	272
Rooftop Solar (HT Bulk)	74

Data Source - Monthly Review Report [Nov-2023]

2. Cumulative Dispatch

Following data excludes the contribution from roof top solar, non telemetered solar and mini hydro plants

Table 03 - Current Month

Category	Dispatch (GWh)	
CEB Hydro	316	22.35%
CEB Coal	577	40.85%
CEB Thermal Oil	213	15.07%
IPP Thermal	160	11.36%
SPP Wind	10	0.72%
CEB Wind	11	0.76%
Mini Hydro *	43	3.02%
IPP Solar *	74	5.26%
IPP Waste heat + BMP	10	0.74%
Total	1,412	

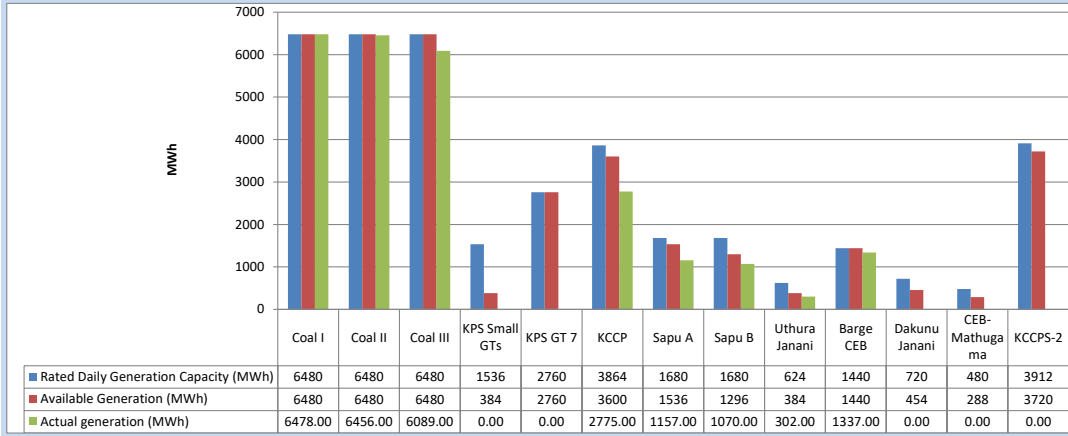
Table 04 - Current Year

Category	Dispatch (GWh)	
CEB Hydro	1,254	31.45%
CEB Coal	1,457	36.55%
CEB Thermal Oil	372	9.33%
IPP Thermal	329	8.26%
SPP Wind	46	1.16%
CEB Wind	55	1.38%
Mini Hydro *	234	5.86%
IPP Solar *	207	5.19%
IPP Waste heat	33	0.82%
Total	3,987	

*Including estimated contribution from non telemetered plants

3. CEB owned Thermal Plant Dispatch

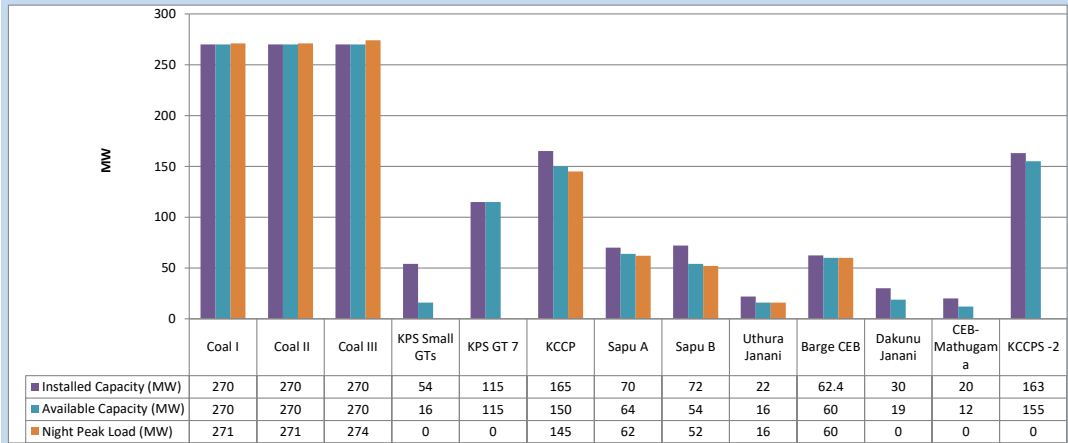
March 30, 2024



Available Generation is estimated based on plant availability at 6.00am on

March 31, 2024

4. CEB owned Thermal Plant Loading at the Night Peak

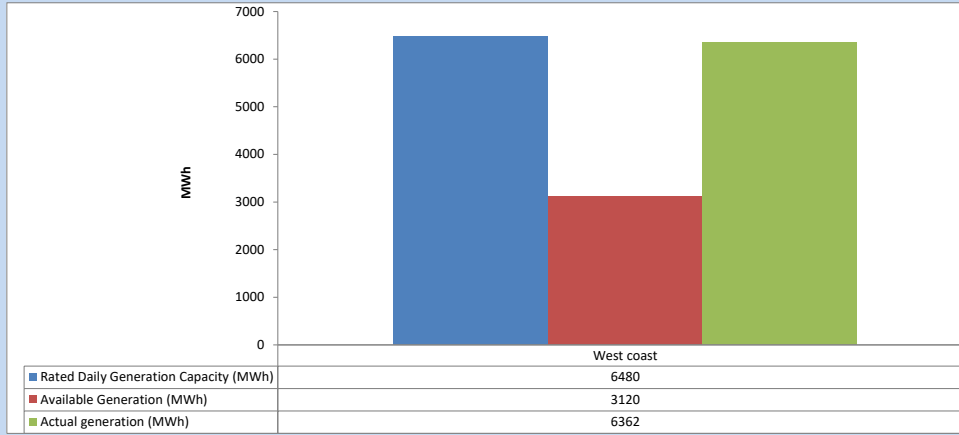


Plant availability is recorded at 6.00 am on

March 31, 2024

5. IPP owned Thermal Plant Dispatch

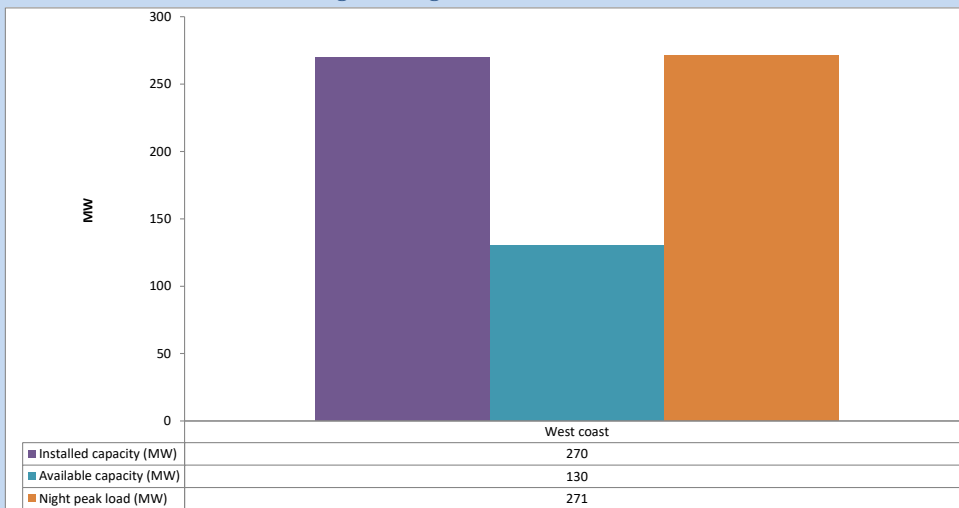
March 30, 2024



Available Generation is estimated based on plant availability at 6.00am on

March 31, 2024

6. IPP owned Thermal Plant Loading at the Night Peak

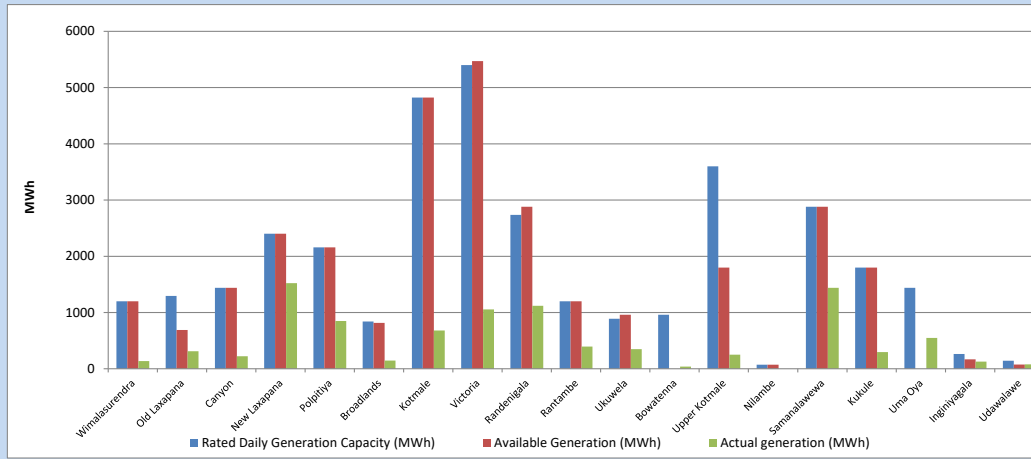


Plant availability is recorded at 6.00 am on

March 31, 2024

7. Major Hydro Plant Dispatch

March 30, 2024

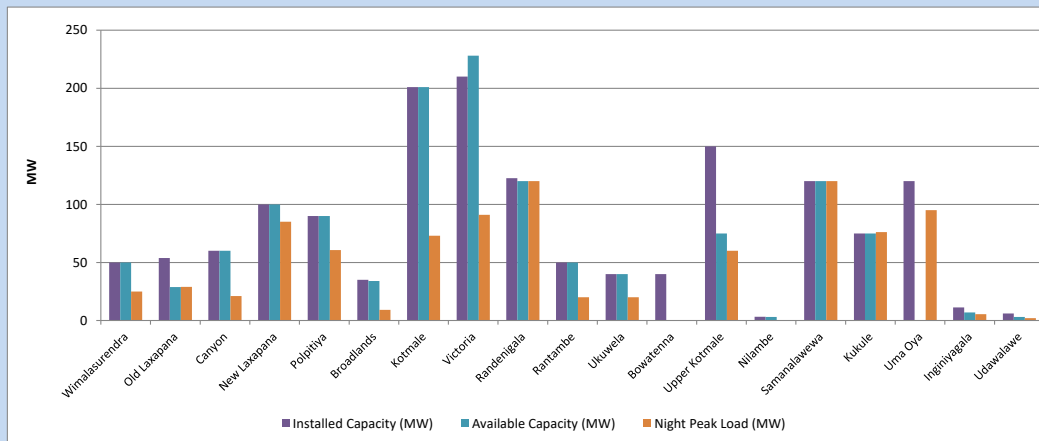


Available Generation is estimated based on plant availability at 6.00am on
Broadlands power plant is operating in the Commissioning Stage

March 31, 2024

8. Major Hydro Plant Loading at Night Peak

March 30, 2024



Plant availability is recorded at 6.00 am on
Broadlands power plant is operating in the Commissioning Stage

March 31, 2024

9. Summary of Major Plant performance

Table 05

Plant	Maximum Available Total Capacity	Plant Availability	Night peak Load	Plant Dispatch
	(MW)	(MW)	(MW)	(MWh)
Wimalasurendra	50	50	25	137
Old Laxapana	54	29	29	313
Canyon	60	60	21	224
New Laxapana	100	100	85	1,521
Polpitiya	90	90	61	850
Broadlands	35	34	9	145
Kotmale	201	201	73	680
Victoria	210	228	91	1,055
Randenigala	123	120	120	1,121
Rantambe	50	50	20	396
Ukuwela	40	40	20	348
Bowatenna	40	0	0	37
Upper Kotmale	150	75	60	251
Nilambe	3	3	0	0
Samanalawewa	120	120	120	1,439
Kukule	75	75	76	296
Uma Oya (Testing)	120	0	95	548
Inginiyagala	11	7	6	127
Udawalawe	6	3	2	77
Puttalam Coal I	270	270	271	6,478
Puttalam Coal II	270	270	271	6,456
Puttalam Coal III	270	270	274	6,089
KPS Small GTs	54	16	0	0
KPS GT 7	115	115	0	0
KCCP	165	150	145	2,775
Sapugaskanda A	70	64	62	1,157
Sapugaskanda B	72	54	52	1,070
Uthura Janani	22	16	16	302
Barge CEB	62	60	60	1,337
CEB-Hambantota	30	19	0	0
CEB-Mathugama	20	12	0	0
ACE Matara	24	0	0	0
Asia Power	50	0	0	0
KCCPS -2	163	155	0	0
West Coast	270	130	271	6,362
Nothern Power	36	0	0	0
ACE Embilipitiya	93	0	0	0
Total	3,594	2,886	2,428	43,773

Note-

Plant availability is the availability recorded at 6 am on

March 31, 2024

Installed Capacity is sourced from CEB Annual Report- 2022

10. Contribution to the Night Peak in MW

March 30, 2024

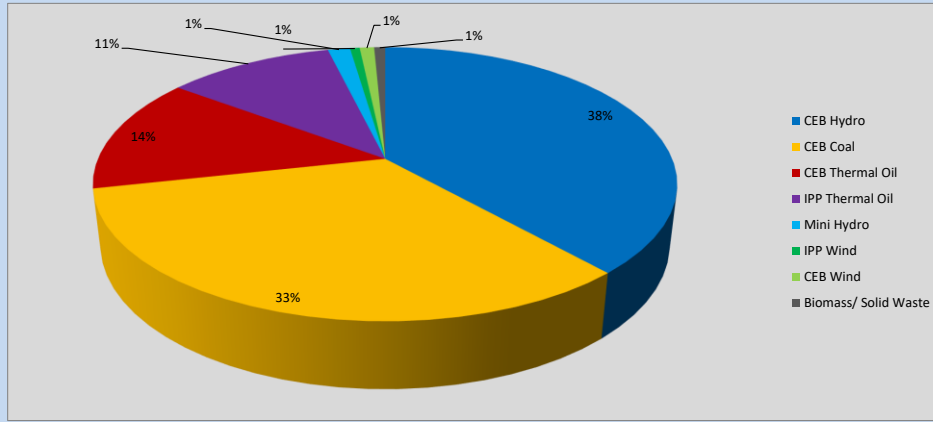


Table 06

CEB Hydro	943	MW
CEB Coal	816	MW
CEB Thermal Oil	335	MW
IPP Thermal Oil	271	MW
Mini Hydro (Telemetered)	36	MW
IPP Wind	15.7	MW
CEB Wind	23.5	MW
Biomass/ Solid Waste	18	MW

Recorded Peak Demand Data

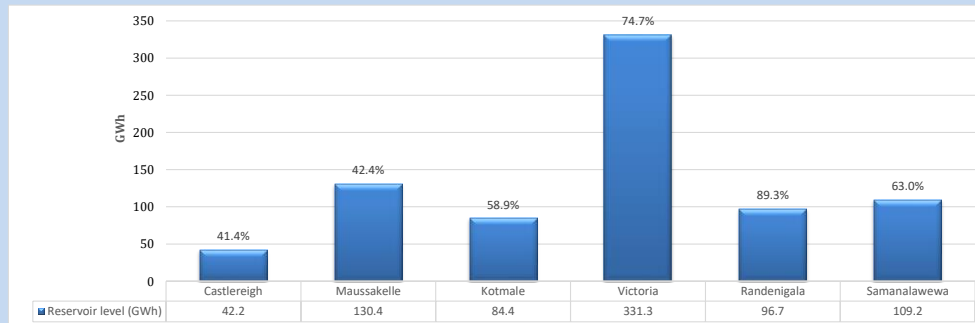
Table 07

Night Peak*	2,458	MW
Day Peak Maximum Demand	2,064	MW
Day Peak Minimum Demand	1,665	MW
Off Peak Minimum Demand	1,527	MW

Above figures are excluding contribution from roof top solar, non telemetered solar and mini hydro plants

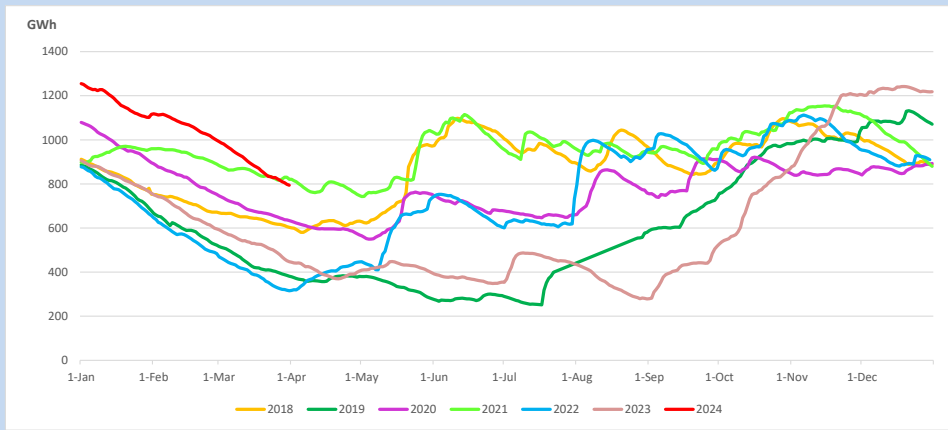
Reservoir Levels -

as at 06.00 Hr on March 31, 2024

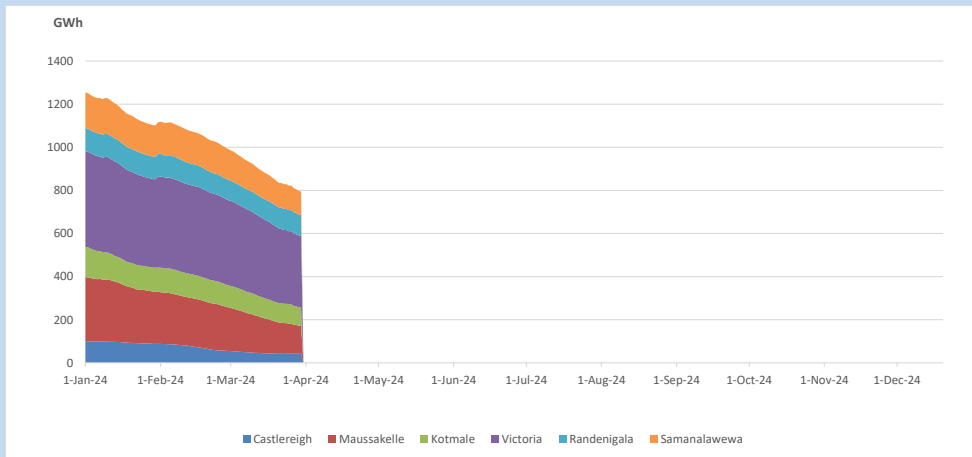


Total Reservoir Level 794.2 GWh
% of Total capacity 62.1%

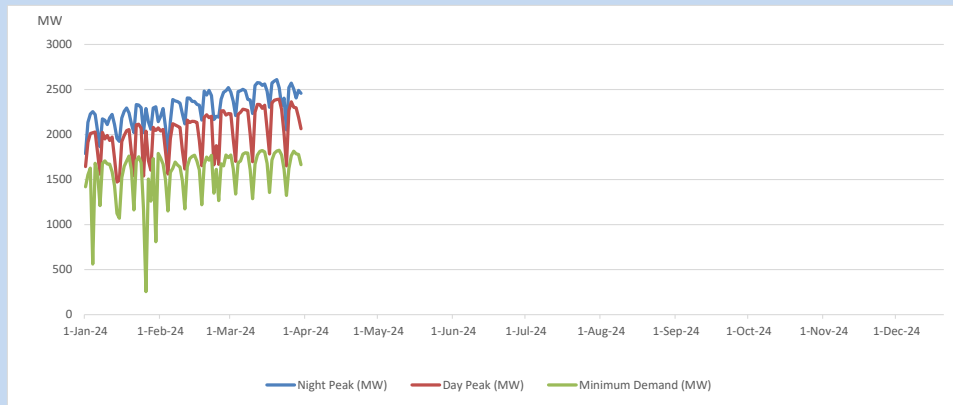
11. Comparison of Total Reservoir Storage Levels with Past Years



12. Variation of Major Hydro Reservoir Levels in the current year (GWh)



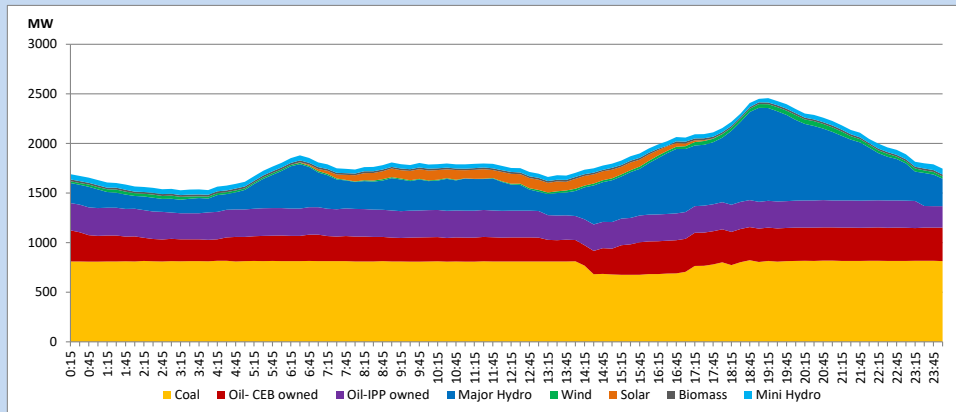
13. Variation of Demand during the current year



The above figures are excluding contribution from roof top solar, non telemetered solar and mini hydro plants

14. Daily Load Curve

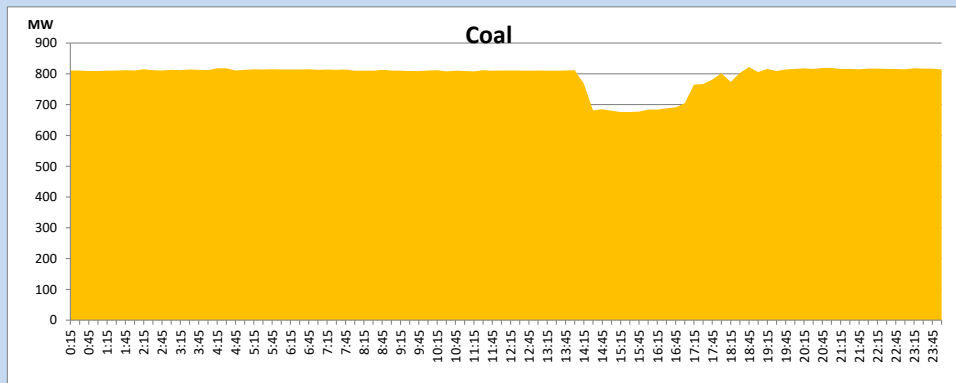
March 30, 2024



Solar and wind data is based on Telemetered Power Stations only

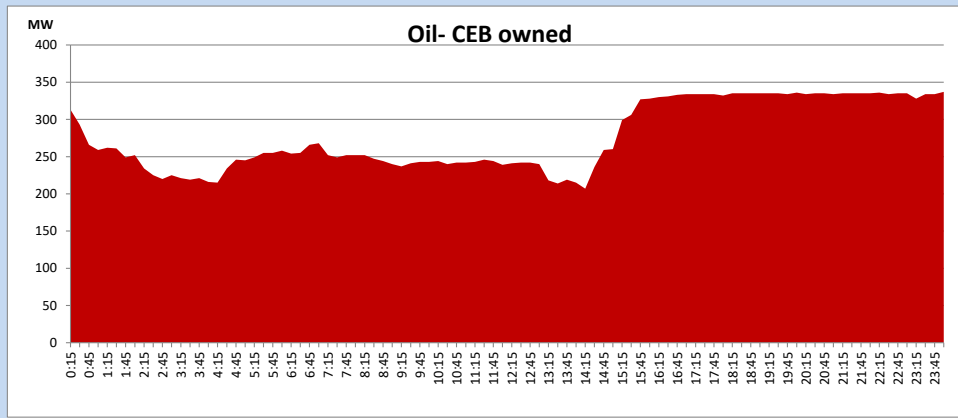
Coal Generation during

March 30, 2024



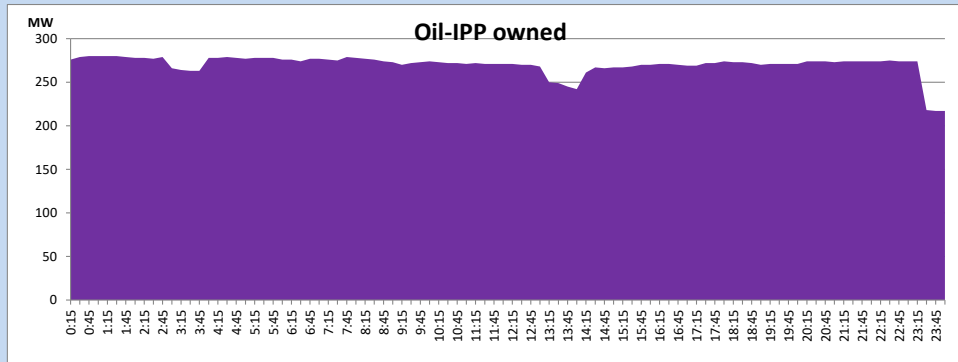
CEB Oil Plant Generation during

March 30, 2024



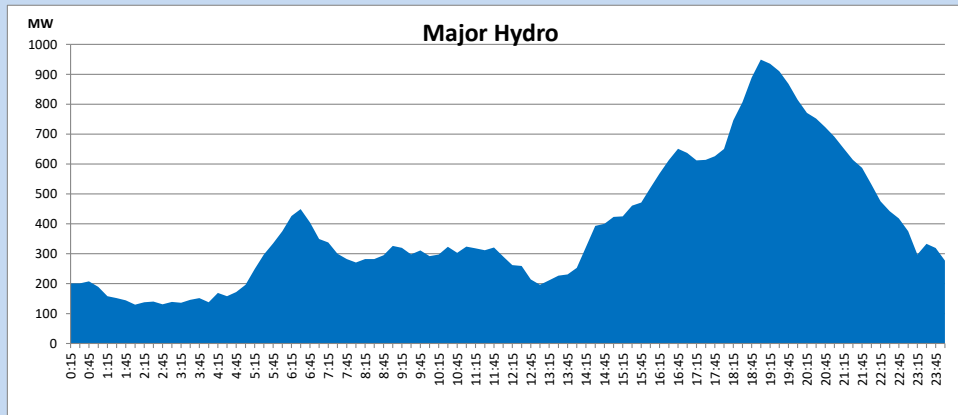
IPP Oil Plant Generation during

March 30, 2024



Major Hydro Generation during

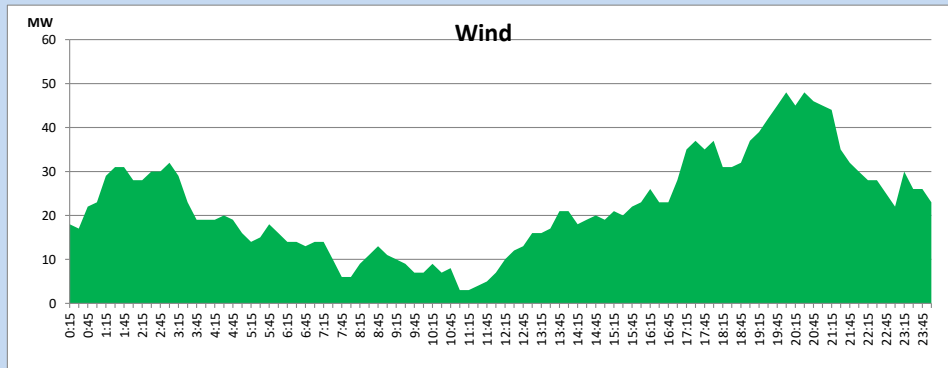
March 30, 2024



Wind Generation during

March 30, 2024

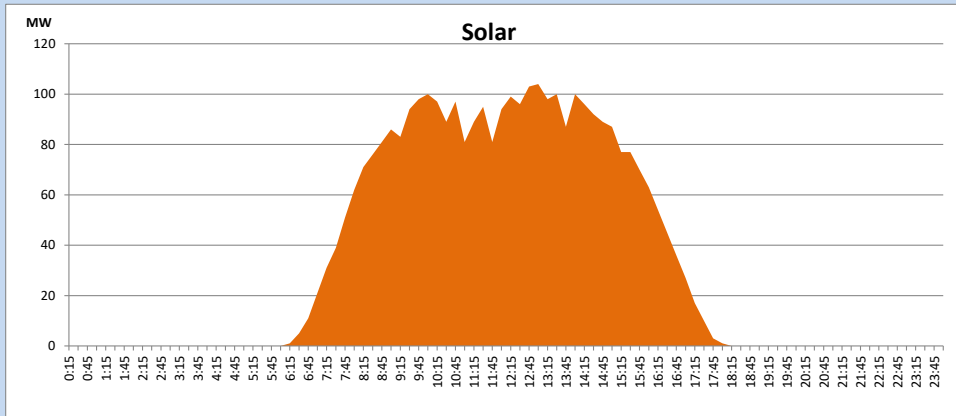
Based on Telemetered Power Stations only



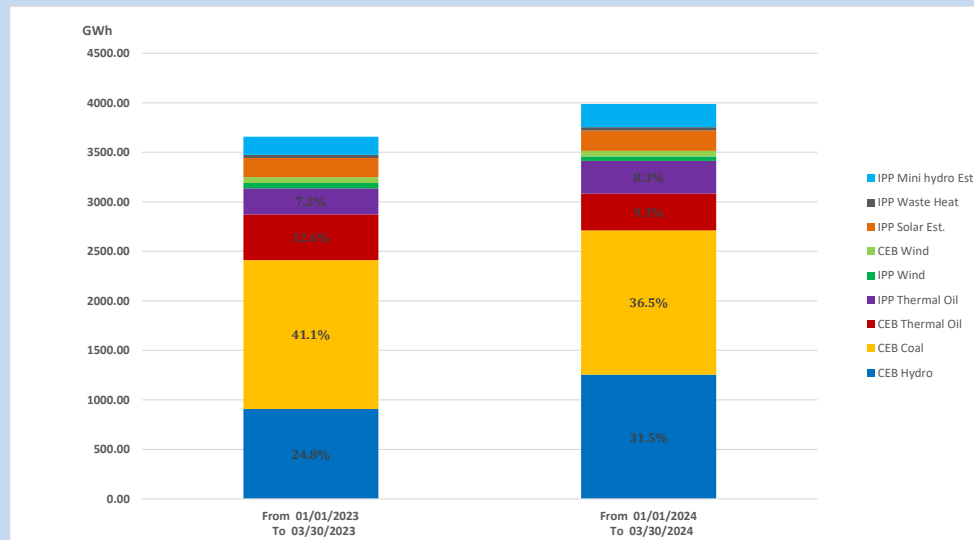
Solar Generation during

March 30, 2024

Based on Telemetered Power Stations only



15. Cumulative Dispatch Comparison with Last Year



Cumulative dispatch

From 01/01/2023 To 03/30/2023

3657 GWh

From 01/01/2024 To 03/30/2024

3987 GWh

The above figures are including contribution from roof top solar, non telemetered solar and mini hydro plants)

Unserviced energy due to power cuts has been excluded in 2023

Thermal Plant Fuel types

Table 08

Power Station	Primary Fuel
CEB Thermal	
Sapugaskanda 1	Heavy Fuel
Sapugaskanda 2	Heavy Fuel
Kelanitissa Small Gas Turbines	Auto Diesel
GT 7 - Kelanitissa	Auto Diesel
Kelanitissa CCY	Naphtha or Diesel
Lakvijaya 1	Coal
Lakvijaya 2	Coal
Lakvijaya 3	Coal
Uthuru Janani	Heavy Fuel
Barge CEB	Heavy Fuel
KCCPS -2	Auto Diesel

Power Station	Primary Fuel
Private Thermal	
West Coast	Auto Diesel / Heavy Fuel

Major Incidents reported during the day

March 30, 2024

- 1). LVPS Unit 03 run backed to 145MW (net) due to tripping of primary air fan A at 14:15hrs. The Unit reached full load at 18:45hrs.