

Generation and Reservoirs Statistics

March 29, 2024



PUBLIC UTILITIES COMMISSION OF SRI LANKA

1. Daily Generation Mix in MWh

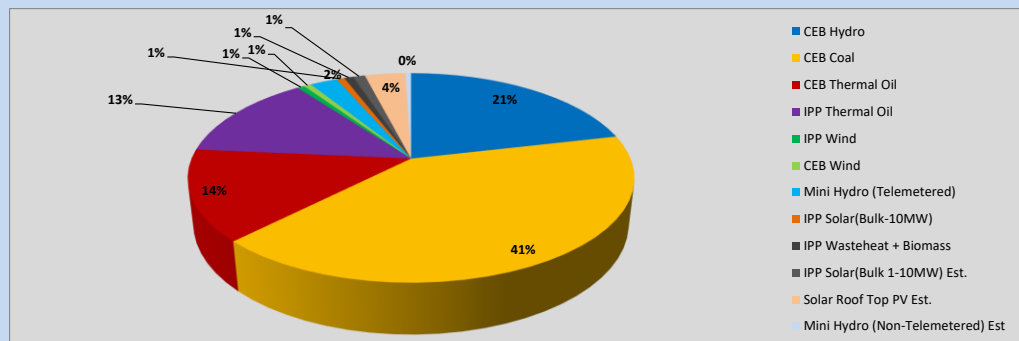


Table 01

	Generation (MWh)
CEB Hydro	10,177
CEB Coal	19,560
CEB Thermal Oil	6,690
IPP Thermal Oil	6,389
IPP Wind	296
CEB Wind	309
Mini Hydro (Telemetered)	1,123
IPP Solar (Bulk)	331
IPP Waste heat + Biomass	379
Total Generation (Excluding estimated figures)	45,254
* Estimated unserved energy	0
* Estimated Mini Hydro (Non telemetered)	239
* Estimated IPP Solar PV (Bulk 1-10MW)	488
* Estimated Solar Roof Top PV	1670
Total Generation (Including estimated figures)	47,651

* Estimated figures of CEB generation report

Table 02

	Installed Capacity (MW)
CEB Hydro	1644
CEB Coal	810
CEB Thermal Oil	773.1
IPP Thermal Oil (West Coast)	270
IPP Wind	163
CEB Wind	100
Mini Hydro	422
IPP Waste heat + Biomass	54
IPP Solar	137
Rooftop Solar (Ordinary)	293
Rooftop Solar (LT Bulk)	272
Rooftop Solar (HT Bulk)	74

Data Source - Monthly Review Report [Nov-2023]

2. Cumulative Dispatch

Following data excludes the contribution from roof top solar, non telemetered solar and mini hydro plants

Table 03 - Current Month

Category	Dispatch (GWh)	
CEB Hydro	306	22.41%
CEB Coal	558	40.84%
CEB Thermal Oil	206	15.10%
IPP Thermal	154	11.28%
SPP Wind	10	0.73%
CEB Wind	11	0.77%
Mini Hydro *	42	3.04%
IPP Solar *	72	5.26%
IPP Waste heat + BMP	10	0.73%
Total	1,366	

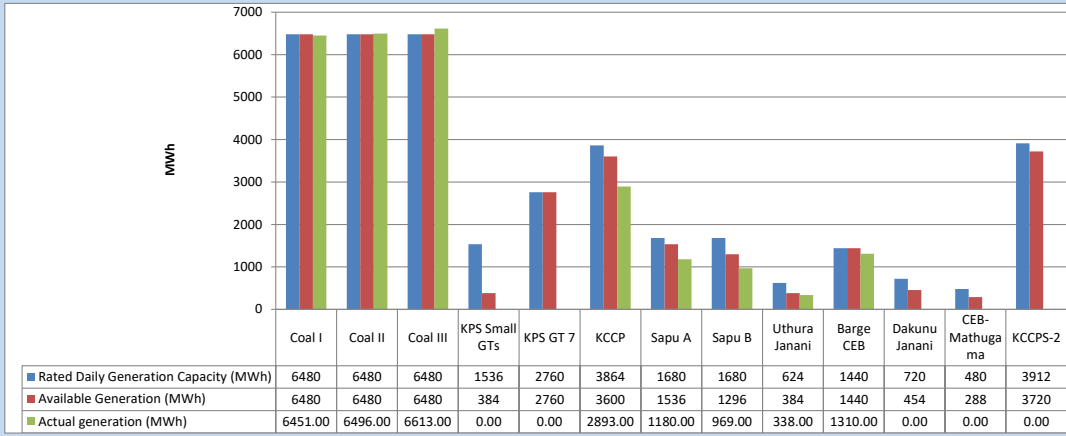
Table 04 - Current Year

Category	Dispatch (GWh)	
CEB Hydro	1,244	31.58%
CEB Coal	1,438	36.49%
CEB Thermal Oil	365	9.27%
IPP Thermal	323	8.19%
SPP Wind	46	1.16%
CEB Wind	55	1.39%
Mini Hydro *	233	5.90%
IPP Solar *	204	5.18%
IPP Waste heat	32	0.82%
Total	3,941	

*Including estimated contribution from non telemetered plants

3. CEB owned Thermal Plant Dispatch

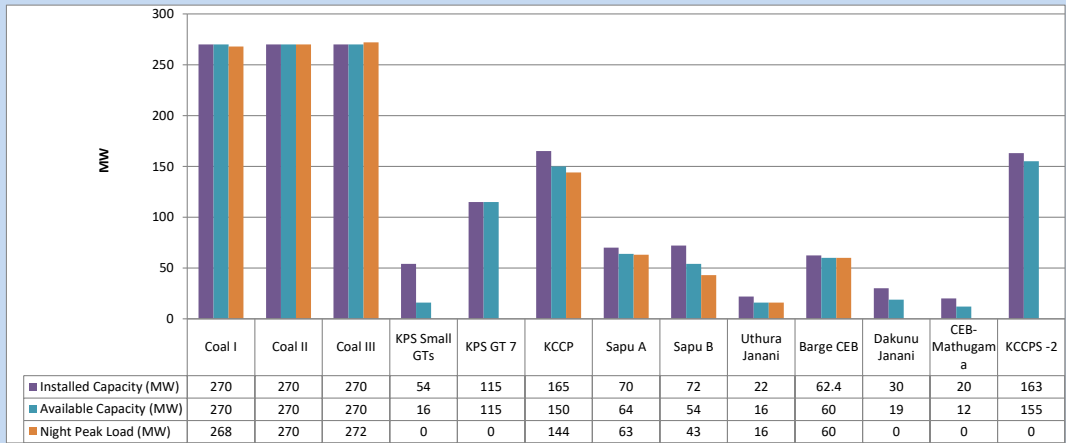
March 29, 2024



Available Generation is estimated based on plant availability at 6.00am on

March 30, 2024

4. CEB owned Thermal Plant Loading at the Night Peak

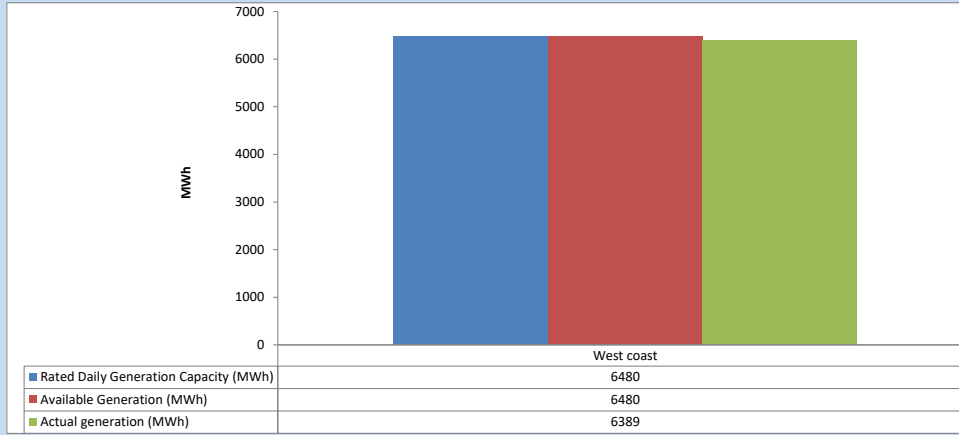


Plant availability is recorded at 6.00 am on

March 30, 2024

5. IPP owned Thermal Plant Dispatch

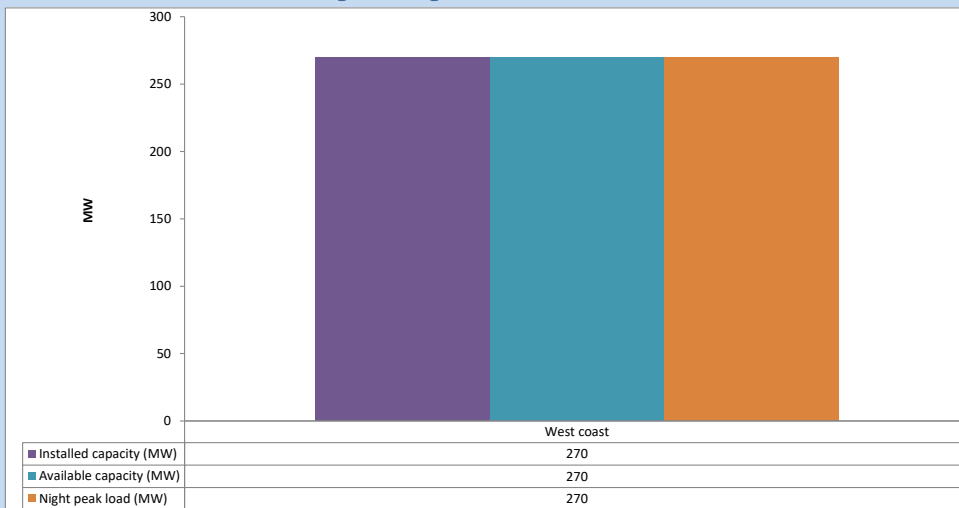
March 29, 2024



Available Generation is estimated based on plant availability at 6.00am on

March 30, 2024

6. IPP owned Thermal Plant Loading at the Night Peak

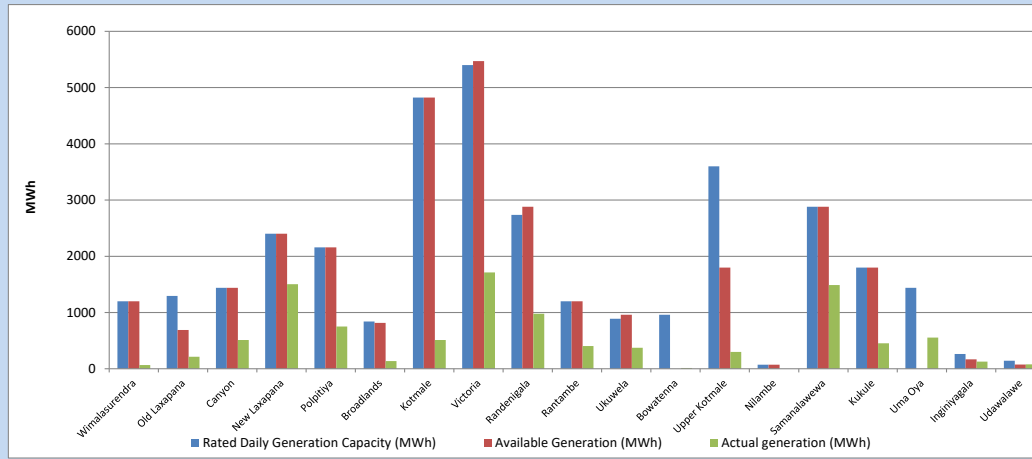


Plant availability is recorded at 6.00 am on

March 30, 2024

7. Major Hydro Plant Dispatch

March 29, 2024

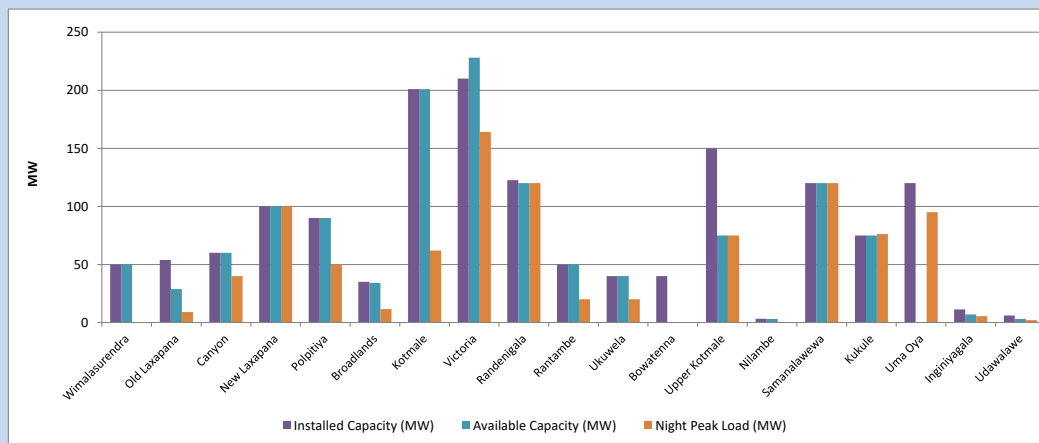


Available Generation is estimated based on plant availability at 6.00am on
Broadlands power plant is operating in the Commissioning Stage

March 30, 2024

8. Major Hydro Plant Loading at Night Peak

March 29, 2024



Plant availability is recorded at 6.00 am on
Broadlands power plant is operating in the Commissioning Stage

March 30, 2024

9. Summary of Major Plant performance

Table 05

Plant	Maximum Available Total Capacity	Plant Availability	Night peak Load	Plant Dispatch
	(MW)	(MW)	(MW)	(MWh)
Wimalasurendra	50	50	0	67
Old Laxapana	54	29	9	214
Canyon	60	60	40	512
New Laxapana	100	100	100	1,503
Polpitiya	90	90	50	750
Broadlands	35	34	12	137
Kotmale	201	201	62	510
Victoria	210	228	164	1,712
Randenigala	123	120	120	978
Rantambe	50	50	20	403
Ukuwela	40	40	20	372
Bowatenna	40	0	0	15
Upper Kotmale	150	75	75	301
Nilambe	3	3	0	0
Samanalawewa	120	120	120	1,489
Kukule	75	75	76	453
Uma Oya (Testing)	120	0	95	556
Inginiyagala	11	7	6	127
Udawalawe	6	3	2	78
Puttalam Coal I	270	270	268	6,451
Puttalam Coal II	270	270	270	6,496
Puttalam Coal III	270	270	272	6,613
KPS Small GTs	54	16	0	0
KPS GT 7	115	115	0	0
KCCP	165	150	144	2,893
Sapugaskanda A	70	64	63	1,180
Sapugaskanda B	72	54	43	969
Uthura Janani	22	16	16	338
Barge CEB	62	60	60	1,310
CEB-Hambantota	30	19	0	0
CEB-Mathugama	20	12	0	0
ACE Matara	24	0	0	0
Asia Power	50	0	0	0
KCCPS -2	163	155	0	0
West Coast	270	270	270	6,389
Nothern Power	36	0	0	0
ACE Embilipitiya	93	0	0	0
Total	3,594	3,026	2,461	45,254

Note-

Plant availability is the availability recorded at 6 am on

March 30, 2024

Installed Capacity is sourced from CEB Annual Report- 2022

10. Contribution to the Night Peak in MW

March 29, 2024

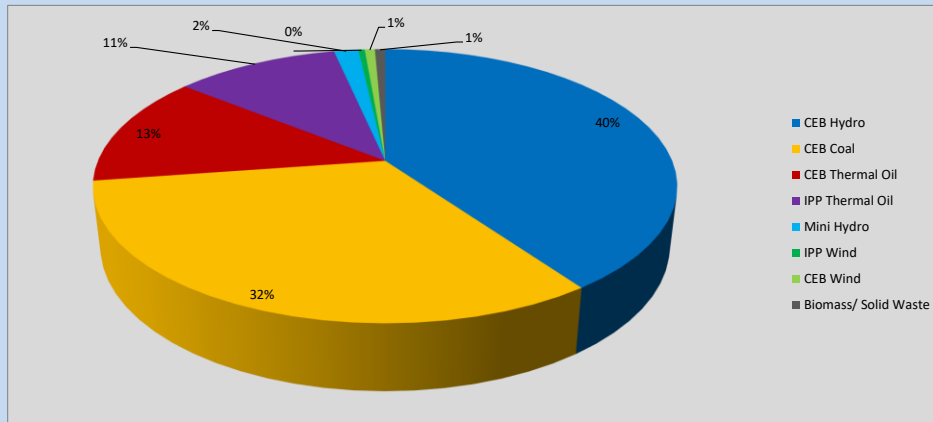


Table 06

CEB Hydro	1000	MW
CEB Coal	810	MW
CEB Thermal Oil	326	MW
IPP Thermal Oil	270	MW
Mini Hydro (Telemetered)	40	MW
IPP Wind	10.5	MW
CEB Wind	16.7	MW
Biomass/ Solid Waste	17	MW

Recorded Peak Demand Data

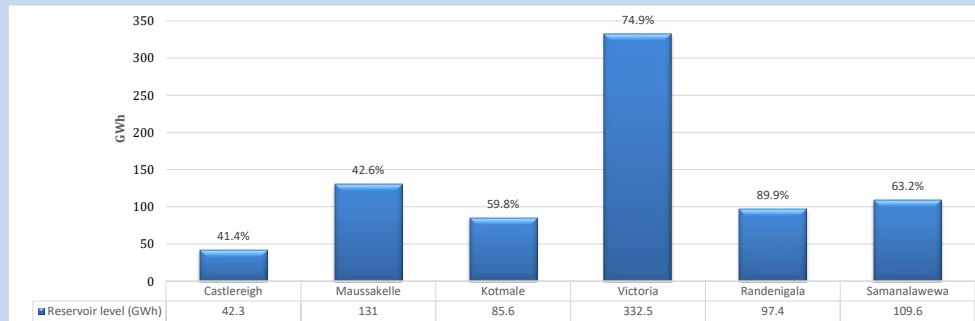
Table 07

Night Peak*	2,490	MW
Day Peak Maximum Demand	2,191	MW
Day Peak Minimum Demand	1,779	MW
Off Peak Minimum Demand	1,529	MW

Above figures are excluding contribution from roof top solar, non telemetered solar and mini hydro plants

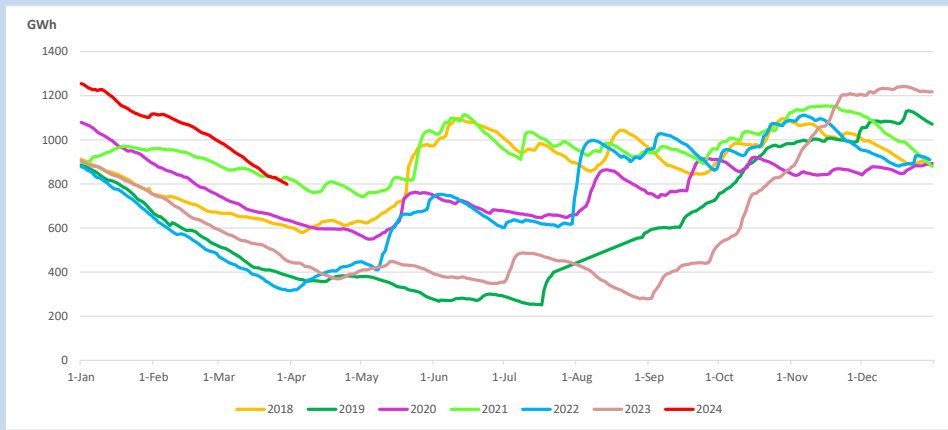
Reservoir Levels -

as at 06.00 Hr on March 30, 2024

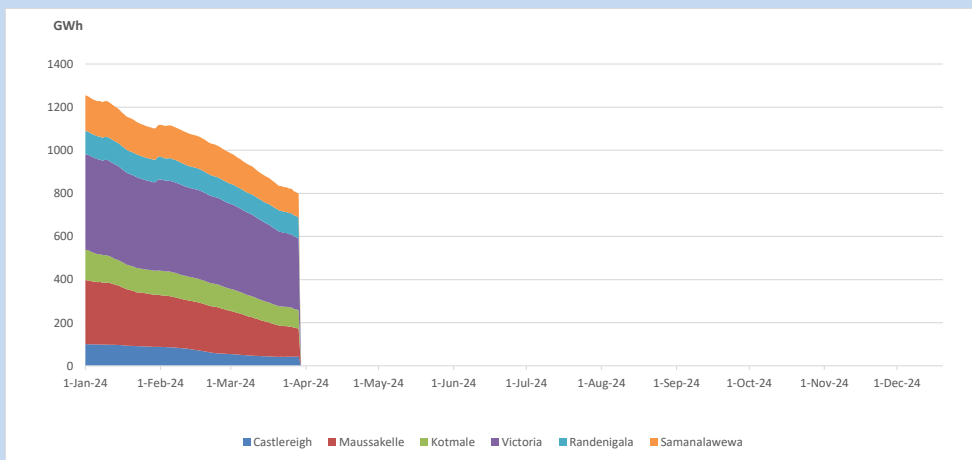


Total Reservoir Level 798.4 GWh
 % of Total capacity 62.4%

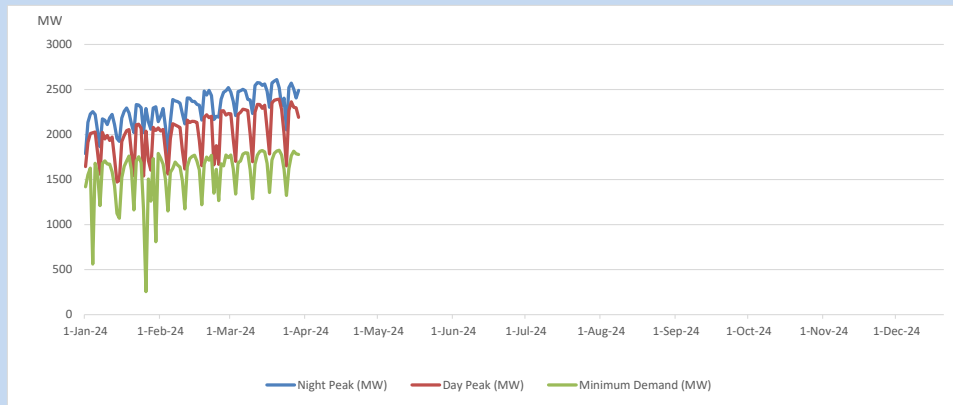
11. Comparison of Total Reservoir Storage Levels with Past Years



12. Variation of Major Hydro Reservoir Levels in the current year (GWh)



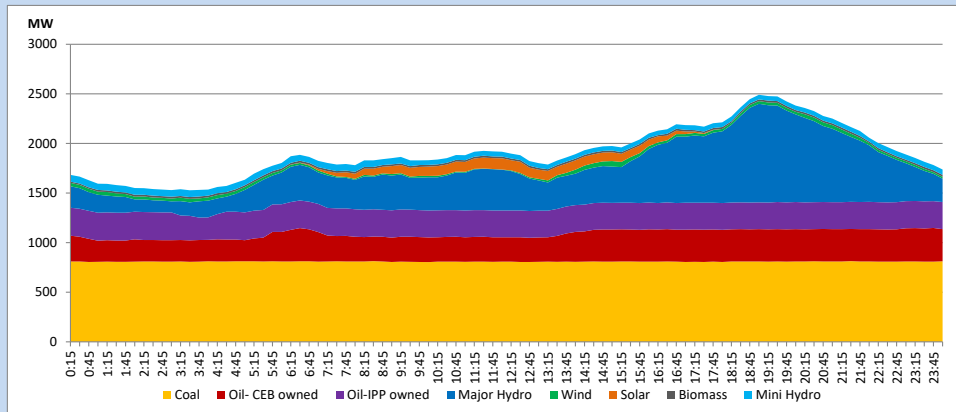
13. Variation of Demand during the current year



The above figures are excluding contribution from roof top solar, non telemetered solar and mini hydro plants

14. Daily Load Curve

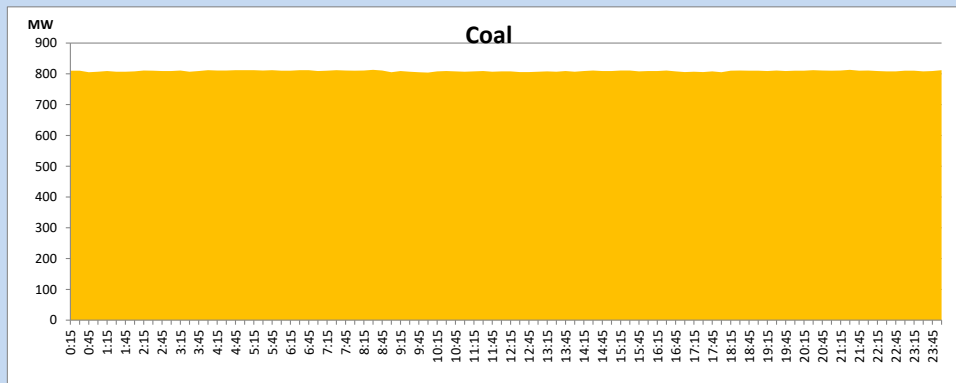
March 29, 2024



Solar and wind data is based on Telemetered Power Stations only

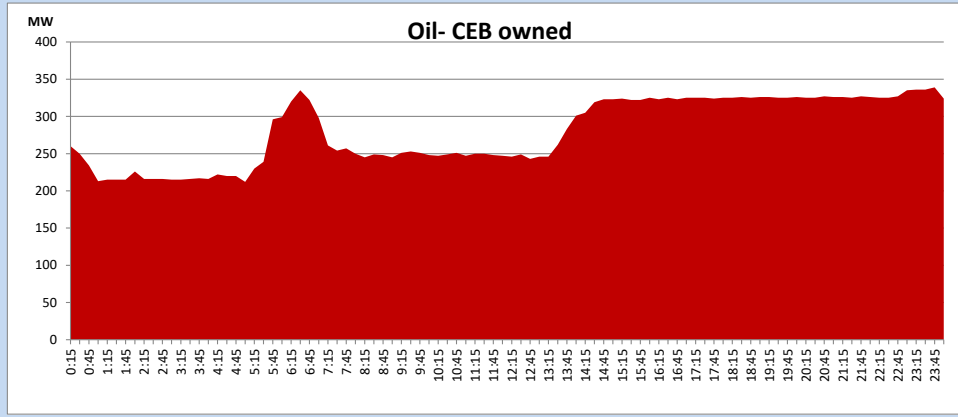
Coal Generation during

March 29, 2024



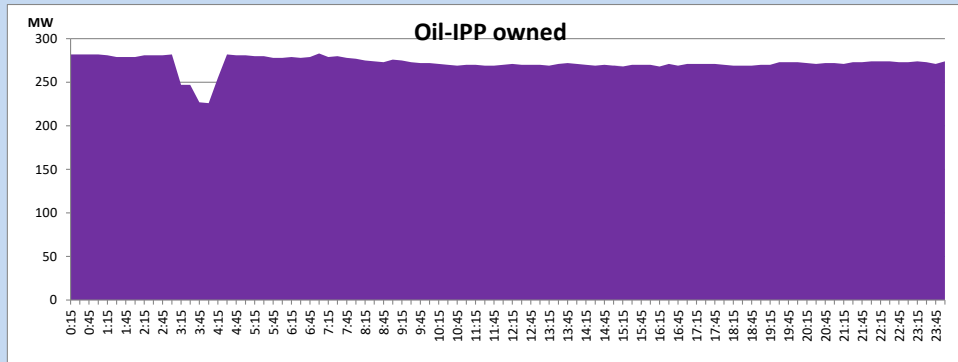
CEB Oil Plant Generation during

March 29, 2024



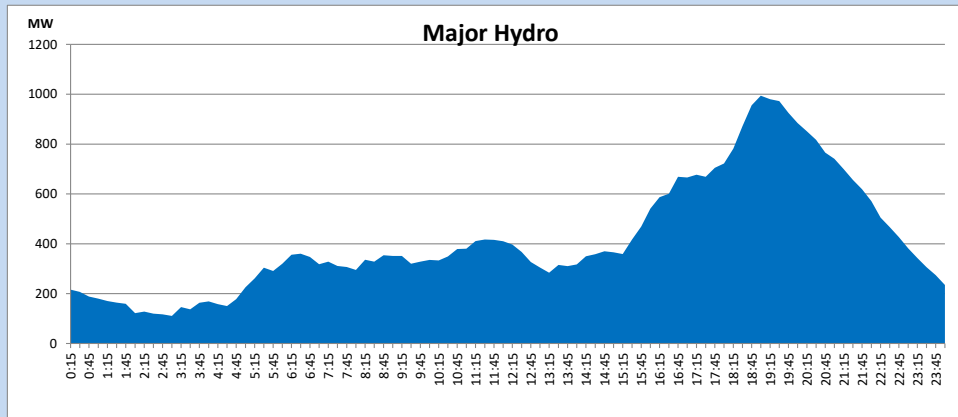
IPP Oil Plant Generation during

March 29, 2024



Major Hydro Generation during

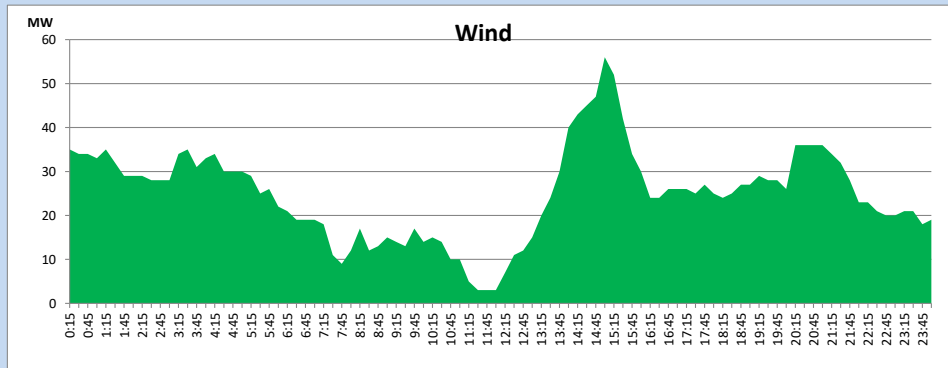
March 29, 2024



Wind Generation during

March 29, 2024

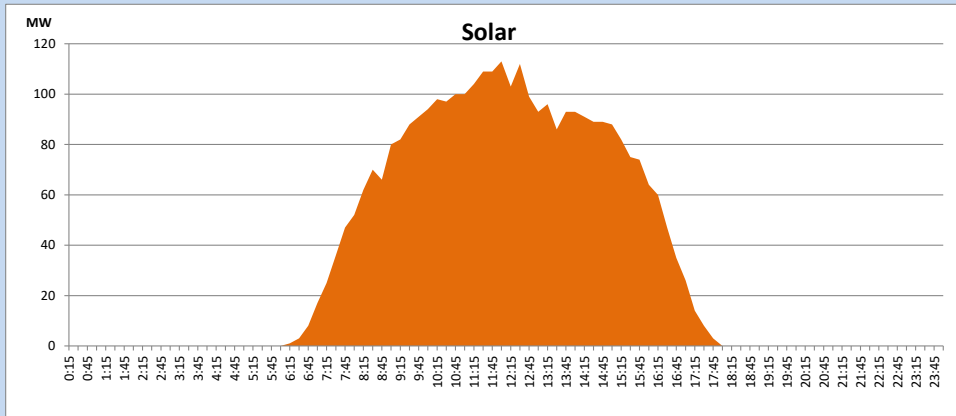
Based on Telemetered Power Stations only



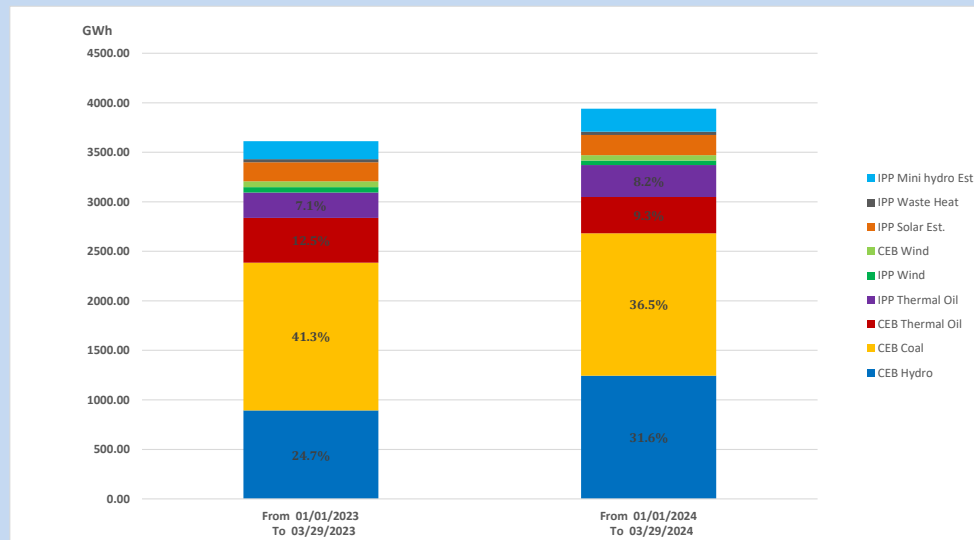
Solar Generation during

March 29, 2024

Based on Telemetered Power Stations only



15. Cumulative Dispatch Comparison with Last Year



Cumulative dispatch

From 01/01/2023 To 03/29/2023

3611 GWh

From 01/01/2024 To 03/29/2024

3941 GWh

The above figures are including contribution from roof top solar, non telemetered solar and mini hydro plants)

Unserviced energy due to power cuts has been excluded in 2023

Thermal Plant Fuel types

Table 08

Power Station	Primary Fuel
CEB Thermal	
Sapugaskanda 1	Heavy Fuel
Sapugaskanda 2	Heavy Fuel
Kelanitissa Small Gas Turbines	Auto Diesel
GT 7 - Kelanitissa	Auto Diesel
Kelanitissa CCY	Naphtha or Diesel
Lakvijaya 1	Coal
Lakvijaya 2	Coal
Lakvijaya 3	Coal
Uthuru Janani	Heavy Fuel
Barge CEB	Heavy Fuel
KCCPS -2	Auto Diesel

Power Station	Primary Fuel
Private Thermal	
West Coast	Auto Diesel / Heavy Fuel

Major Incidents reported during the day

March 29, 2024

- 1) Matara - New Galle 132kV cct 02 tripped and AR from both ends at 06:40hrs.