

Generation and Reservoirs Statistics

March 28, 2024



PUBLIC UTILITIES COMMISSION OF SRI LANKA

1. Daily Generation Mix in MWh

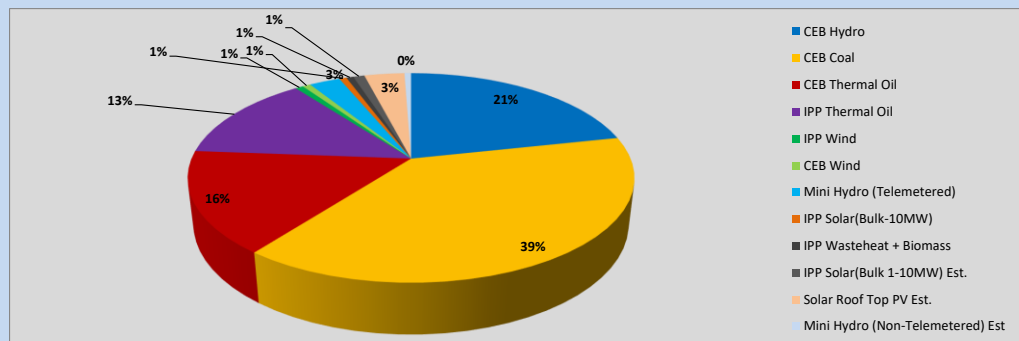


Table 01

	Generation (MWh)
CEB Hydro	10,383
CEB Coal	18,655
CEB Thermal Oil	7,581
IPP Thermal Oil	6,477
IPP Wind	331
CEB Wind	329
Mini Hydro (Telemetered)	1,289
IPP Solar (Bulk)	302
IPP Waste heat + Biomass	294
Total Generation (Excluding estimated figures)	45,641
* Estimated unserved energy	0
* Estimated Mini Hydro (Non telemetered)	275
* Estimated IPP Solar PV (Bulk 1-10MW)	468
* Estimated Solar Roof Top PV	1670
Total Generation (Including estimated figures)	48,054

* Estimated figures of CEB generation report

Table 02

	Installed Capacity (MW)
CEB Hydro	1644
CEB Coal	810
CEB Thermal Oil	773.1
IPP Thermal Oil (West Coast)	270
IPP Wind	163
CEB Wind	100
Mini Hydro	422
IPP Waste heat + Biomass	54
IPP Solar	137
Rooftop Solar (Ordinary)	293
Rooftop Solar (LT Bulk)	272
Rooftop Solar (HT Bulk)	74

Data Source - Monthly Review Report [Nov-2023]

2. Cumulative Dispatch

Following data excludes the contribution from roof top solar, non telemetered solar and mini hydro plants

Table 03 - Current Month

Category	Dispatch (GWh)	
CEB Hydro	296	22.45%
CEB Coal	538	40.84%
CEB Thermal Oil	199	15.11%
IPP Thermal	148	11.20%
SPP Wind	10	0.73%
CEB Wind	10	0.78%
Mini Hydro *	40	3.02%
IPP Solar *	69	5.27%
IPP Waste heat + BMP	9	0.72%
Total	1,318	

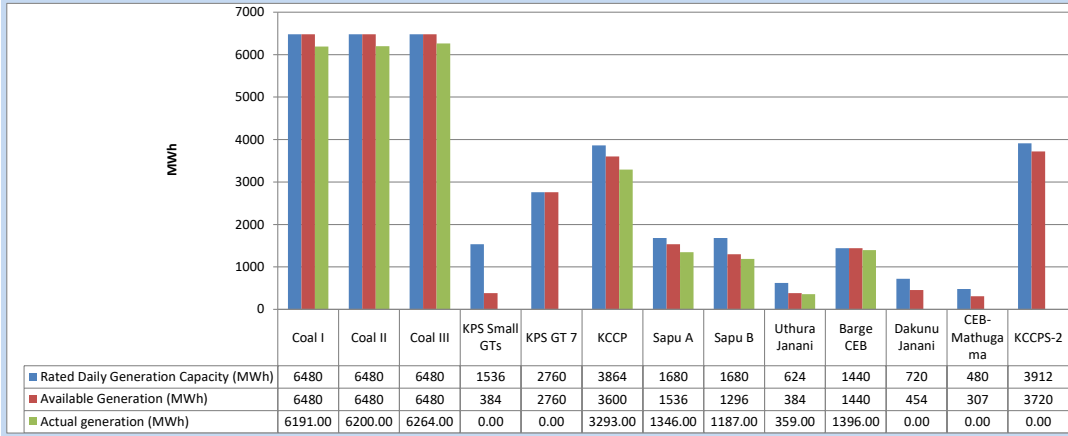
Table 04 - Current Year

Category	Dispatch (GWh)	
CEB Hydro	1,234	31.71%
CEB Coal	1,418	36.44%
CEB Thermal Oil	359	9.22%
IPP Thermal	316	8.13%
SPP Wind	46	1.17%
CEB Wind	54	1.40%
Mini Hydro *	231	5.94%
IPP Solar *	202	5.18%
IPP Waste heat	32	0.82%
Total	3,893	

*Including estimated contribution from non telemetered plants

3. CEB owned Thermal Plant Dispatch

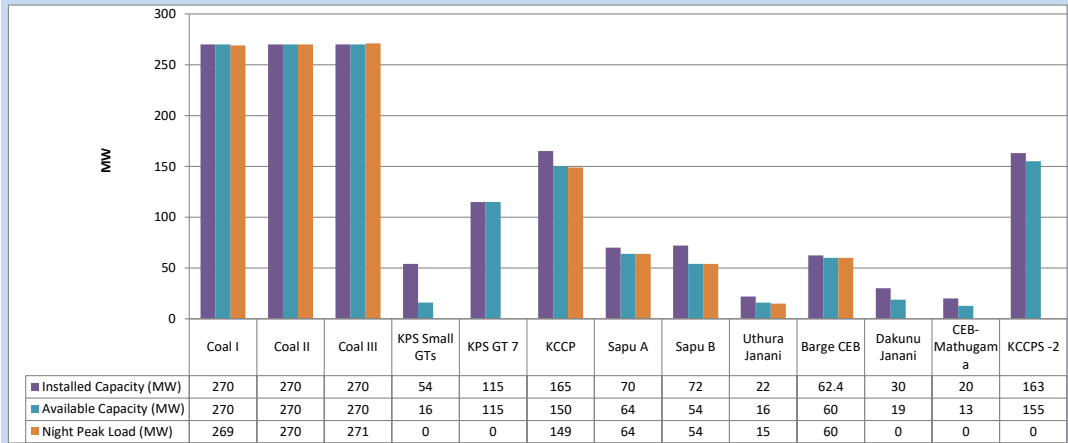
March 28, 2024



Available Generation is estimated based on plant availability at 6.00am on

March 29, 2024

4. CEB owned Thermal Plant Loading at the Night Peak

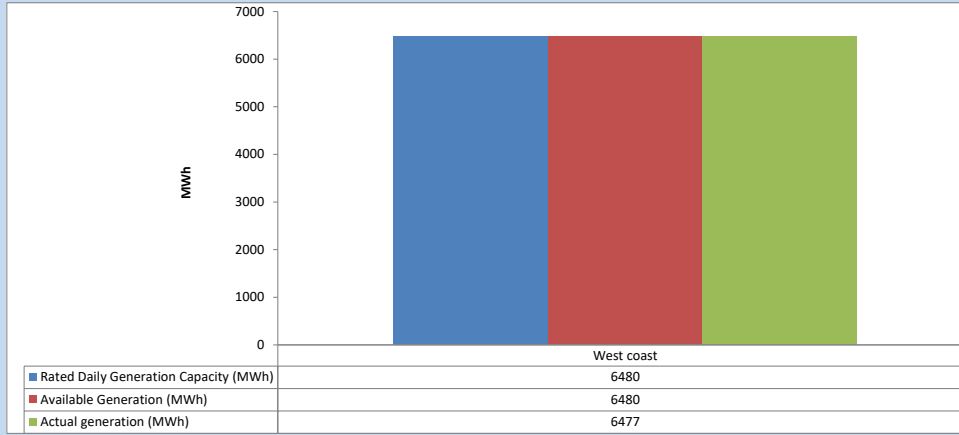


Plant availability is recorded at 6.00 am on

March 29, 2024

5. IPP owned Thermal Plant Dispatch

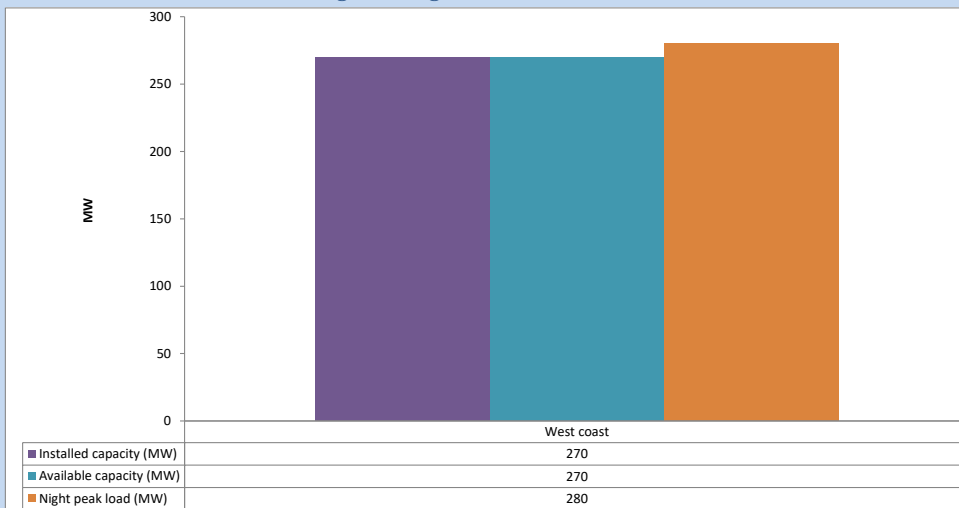
March 28, 2024



Available Generation is estimated based on plant availability at 6.00am on

March 29, 2024

6. IPP owned Thermal Plant Loading at the Night Peak

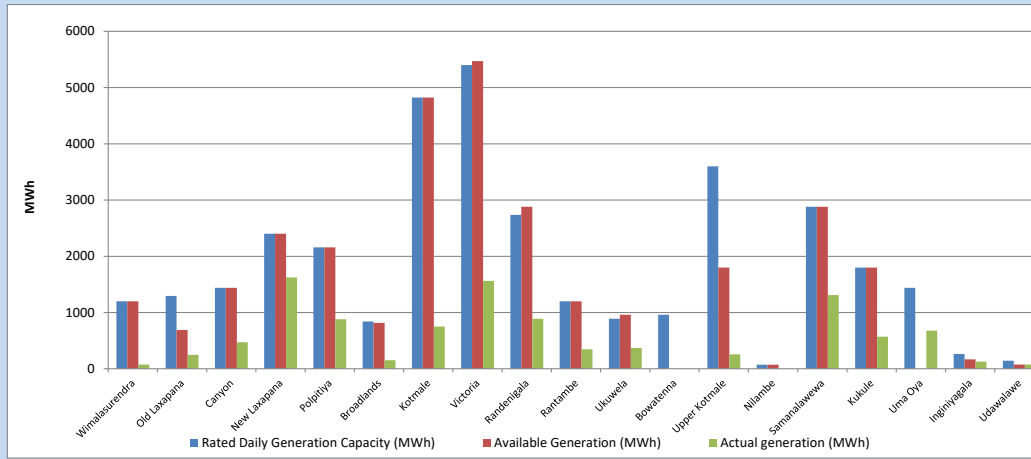


Plant availability is recorded at 6.00 am on

March 29, 2024

7. Major Hydro Plant Dispatch

March 28, 2024

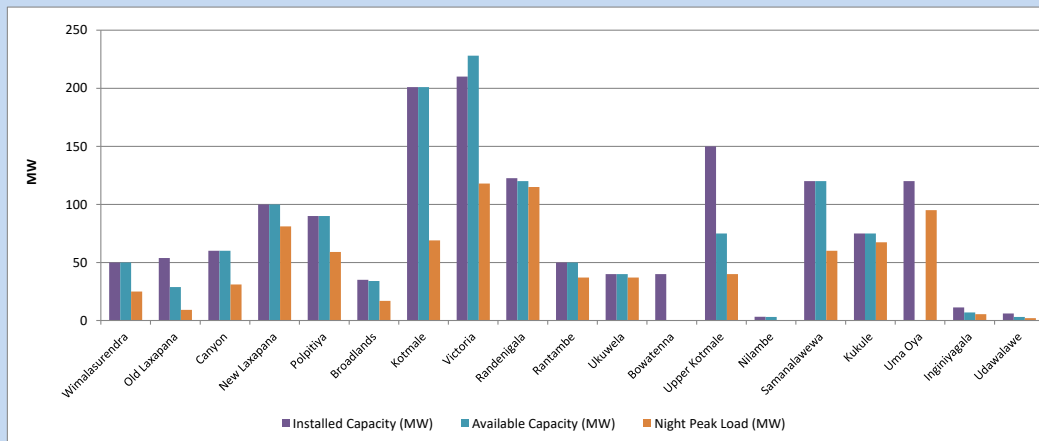


Available Generation is estimated based on plant availability at 6.00am on
Broadlands power plant is operating in the Commissioning Stage

March 29, 2024

8. Major Hydro Plant Loading at Night Peak

March 28, 2024



Plant availability is recorded at 6.00 am on
Broadlands power plant is operating in the Commissioning Stage

March 29, 2024

9. Summary of Major Plant performance

Table 05

Plant	Maximum Available Total Capacity	Plant Availability	Night peak Load	Plant Dispatch
	(MW)	(MW)	(MW)	(MWh)
Wimalasurendra	50	50	25	75
Old Laxapana	54	29	9	248
Canyon	60	60	31	471
New Laxapana	100	100	81	1,623
Polpitiya	90	90	59	880
Broadlands	35	34	17	153
Kotmale	201	201	69	750
Victoria	210	228	118	1,562
Randenigala	123	120	115	889
Rantambe	50	50	37	347
Ukuwela	40	40	37	369
Bowatenna	40	0	0	0
Upper Kotmale	150	75	40	257
Nilambe	3	3	0	0
Samanalawewa	120	120	60	1,309
Kukule	75	75	67	571
Uma Oya (Testing)	120	0	95	676
Inginiyagala	11	7	6	128
Udawalawe	6	3	2	75
Puttalam Coal I	270	270	269	6,191
Puttalam Coal II	270	270	270	6,200
Puttalam Coal III	270	270	271	6,264
KPS Small GTs	54	16	0	0
KPS GT 7	115	115	0	0
KCCP	165	150	149	3,293
Sapugaskanda A	70	64	64	1,346
Sapugaskanda B	72	54	54	1,187
Uthura Janani	22	16	15	359
Barge CEB	62	60	60	1,396
CEB-Hambantota	30	19	0	0
CEB-Mathugama	20	13	0	0
ACE Matara	24	0	0	0
Asia Power	50	0	0	0
KCCPS -2	163	155	0	0
West Coast	270	270	280	6,477
Nothern Power	36	0	0	0
ACE Embilipitiya	93	0	0	0
Total	3,594	3,027	2,413	45,641

Note-

Plant availability is the availability recorded at 6 am on

March 29, 2024

Installed Capacity is sourced from CEB Annual Report- 2022

10. Contribution to the Night Peak in MW

March 28, 2024

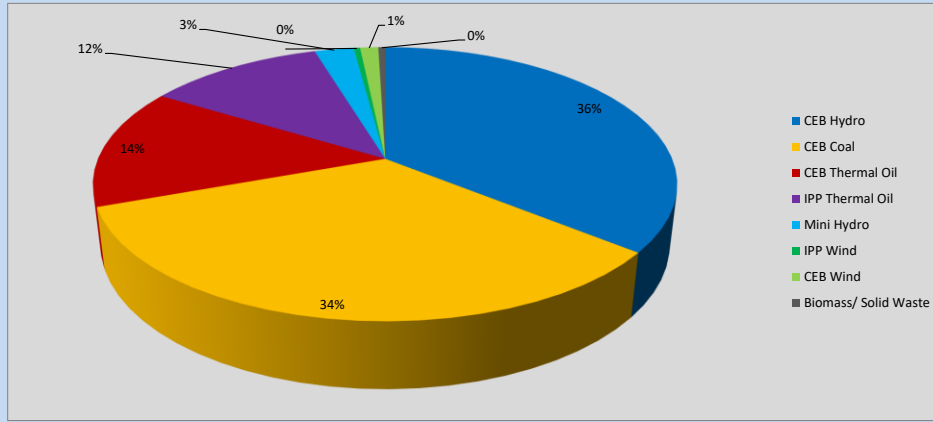


Table 06

CEB Hydro	861	MW
CEB Coal	810	MW
CEB Thermal Oil	342	MW
IPP Thermal Oil	280	MW
Mini Hydro (Telemetered)	62	MW
IPP Wind	10.2	MW
CEB Wind	29	MW
Biomass/ Solid Waste	11	MW

Recorded Peak Demand Data

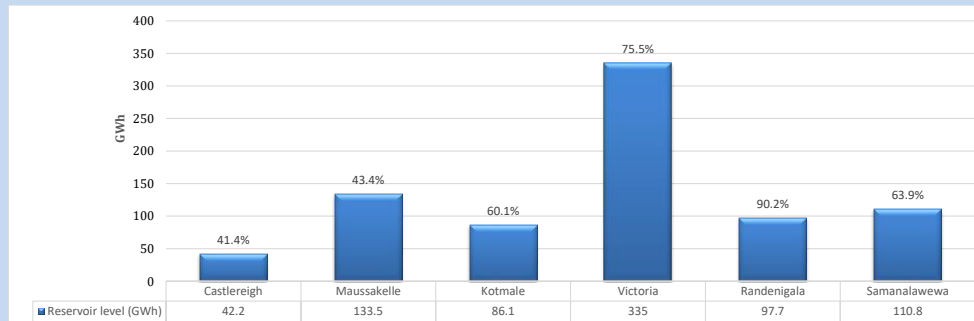
Table 07

Night Peak*	2,406	MW
Day Peak Maximum Demand	2,297	MW
Day Peak Minimum Demand	1,786	MW
Off Peak Minimum Demand	1,554	MW

Above figures are excluding contribution from roof top solar, non telemetered solar and mini hydro plants

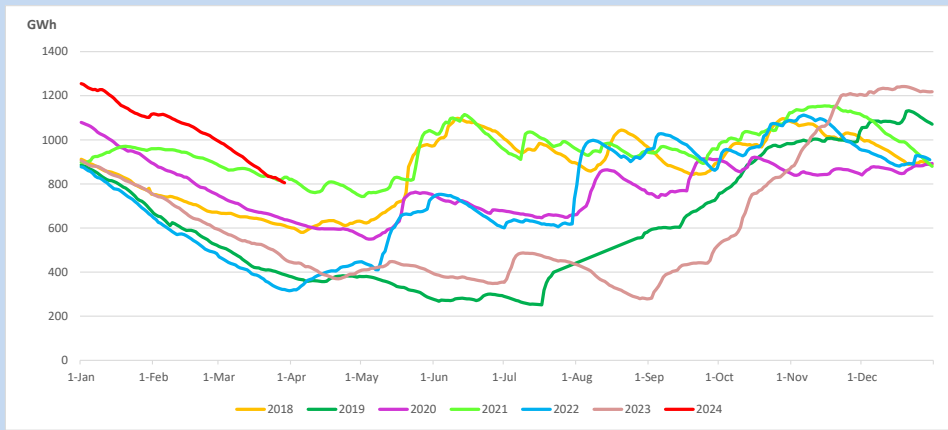
Reservoir Levels -

as at 06.00 Hr on March 29, 2024

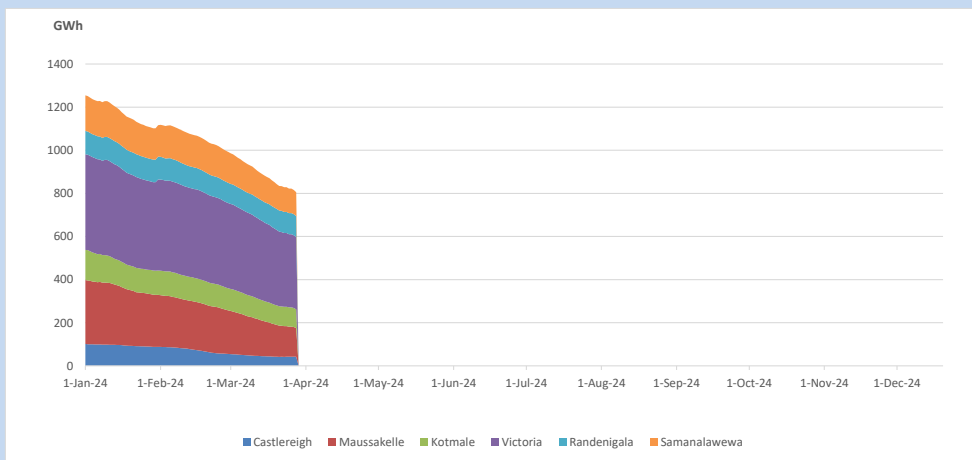


Total Reservoir Level 805.3 GWh
% of Total capacity 63.0%

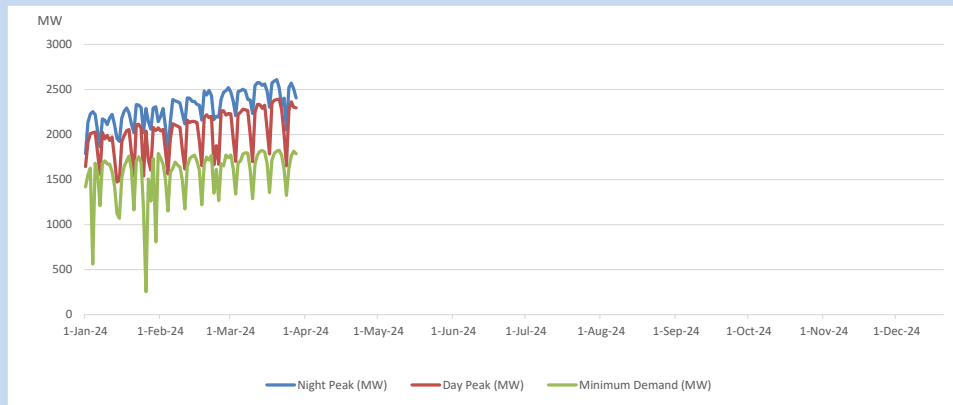
11. Comparison of Total Reservoir Storage Levels with Past Years



12. Variation of Major Hydro Reservoir Levels in the current year (GWh)



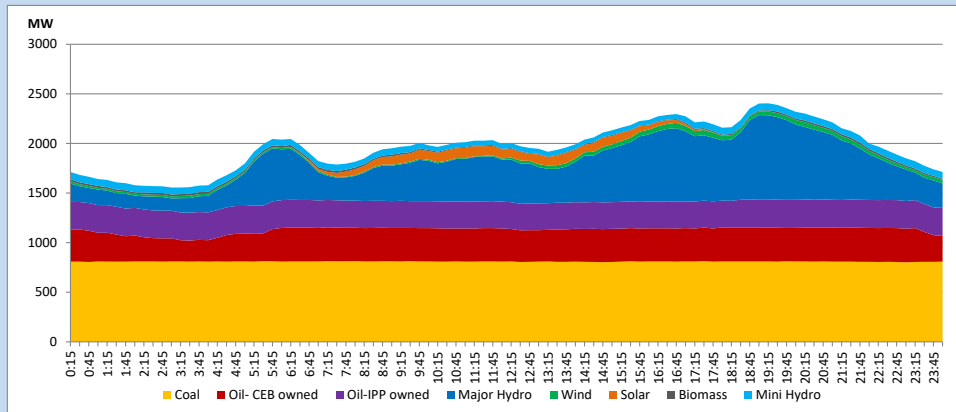
13. Variation of Demand during the current year



The above figures are excluding contribution from roof top solar, non telemetered solar and mini hydro plants

14. Daily Load Curve

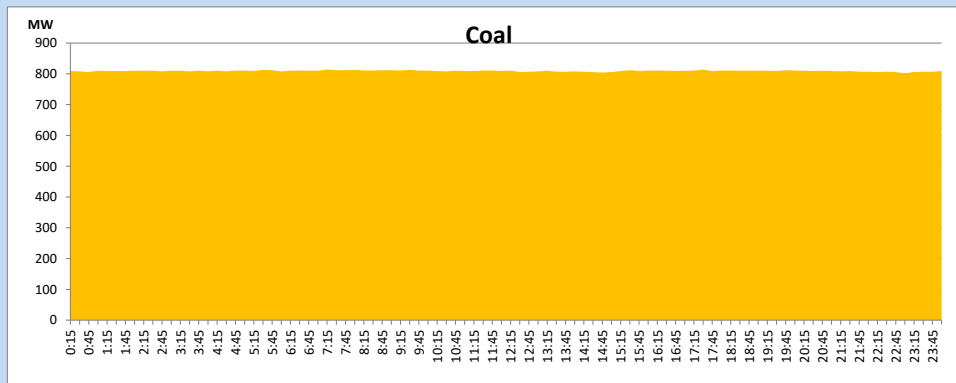
March 28, 2024



Solar and wind data is based on Telemetered Power Stations only

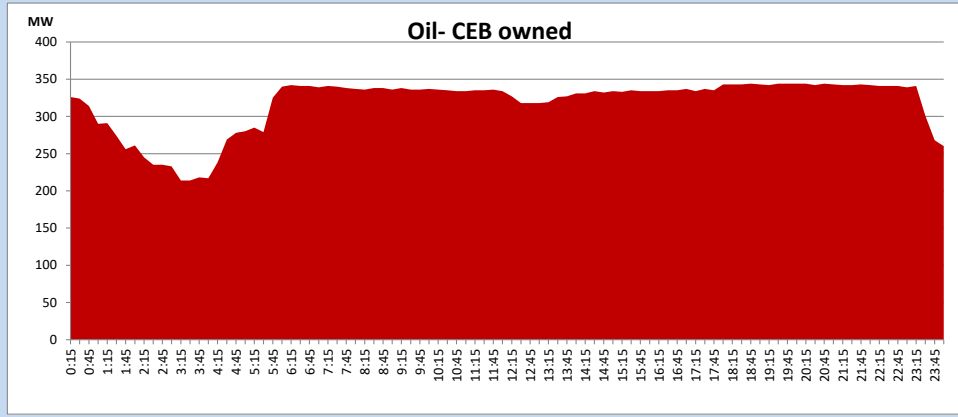
Coal Generation during

March 28, 2024



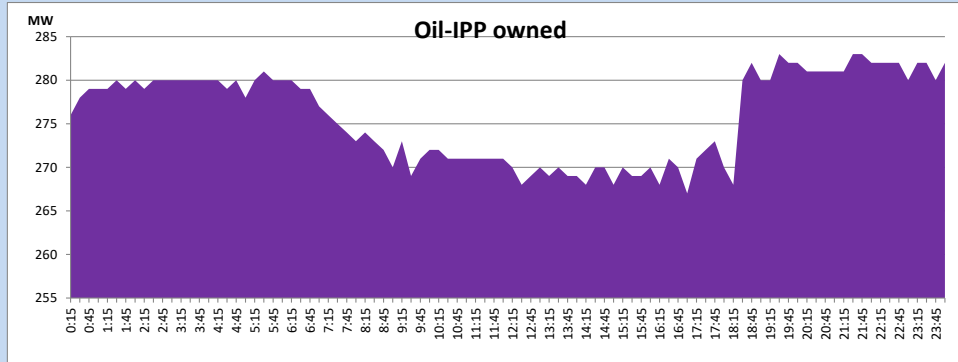
CEB Oil Plant Generation during

March 28, 2024



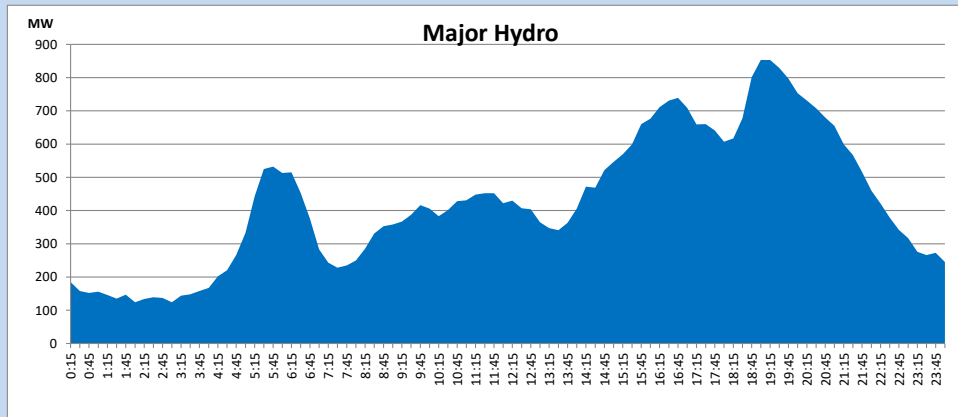
IPP Oil Plant Generation during

March 28, 2024



Major Hydro Generation during

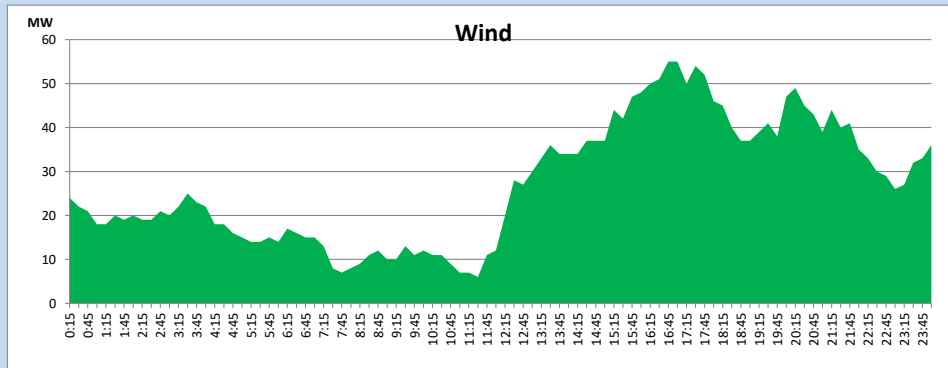
March 28, 2024



Wind Generation during

March 28, 2024

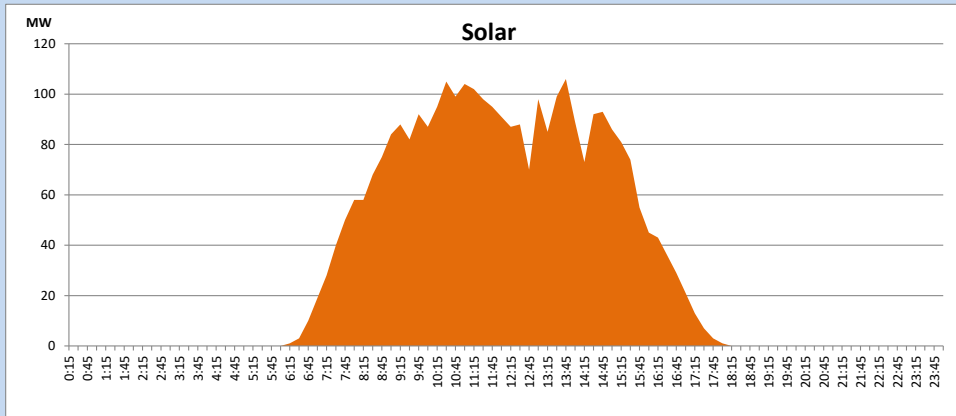
Based on Telemetered Power Stations only



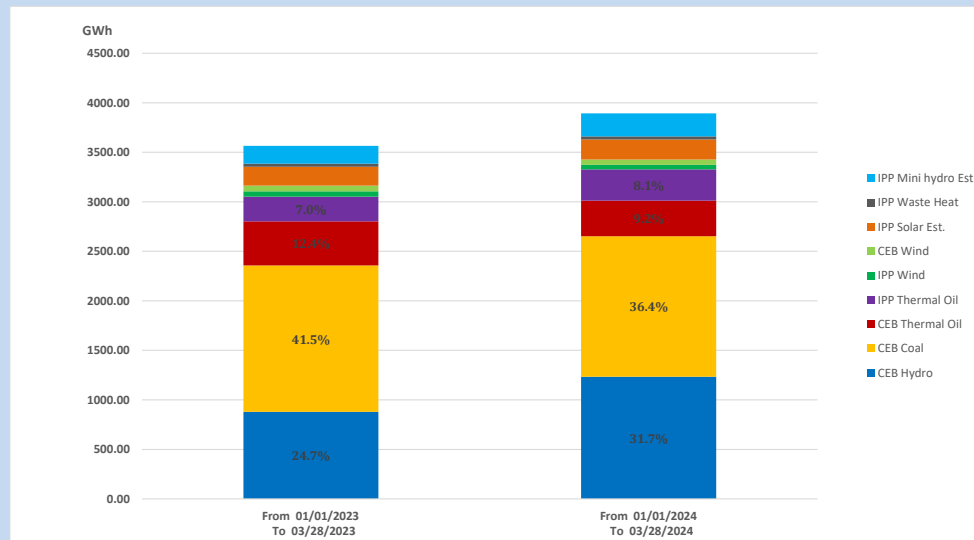
Solar Generation during

March 28, 2024

Based on Telemetered Power Stations only



15. Cumulative Dispatch Comparison with Last Year



Cumulative dispatch

From 01/01/2023 To 03/28/2023

3565 GWh

From 01/01/2024 To 03/28/2024

3893 GWh

The above figures are including contribution from roof top solar, non telemetered solar and mini hydro plants)

Unserviced energy due to power cuts has been excluded in 2023

Thermal Plant Fuel types

Table 08

Power Station	Primary Fuel
CEB Thermal	
Sapugaskanda 1	Heavy Fuel
Sapugaskanda 2	Heavy Fuel
Kelanitissa Small Gas Turbines	Auto Diesel
GT 7 - Kelanitissa	Auto Diesel
Kelanitissa CCY	Naphtha or Diesel
Lakvijaya 1	Coal
Lakvijaya 2	Coal
Lakvijaya 3	Coal
Uthuru Janani	Heavy Fuel
Barge CEB	Heavy Fuel
KCCPS -2	Auto Diesel

Power Station	Primary Fuel
Private Thermal	
West Coast	Auto Diesel / Heavy Fuel

Major Incidents reported during the day

March 28, 2024

- 1) Kukule-Mathugama cct 01 tripped from both ends at 15:19hrs due to the operation of distance protection. The cct was restored at 15:48hrs.
- 2) Kukule-Mathugama both ccts tripped from both ends at 15:59hrs due to the operation of distance protection causing Kukule GSS to be dead, rejecting 30MW from the system due to the tripping of Kukule unit 01. The both ccts were restored by 16:19hrs. Kukule unit 01 resumed generation by 16:22hrs.
- 3) Athurugiriya-Thulhiriya-New Polpitiya cct tripped from all ends at 16:54hrs due to the operation of distance protection. The cct was restored by 17:03hrs.