

Generation and Reservoirs Statistics

March 27, 2024



PUBLIC UTILITIES COMMISSION OF SRI LANKA

1. Daily Generation Mix in MWh

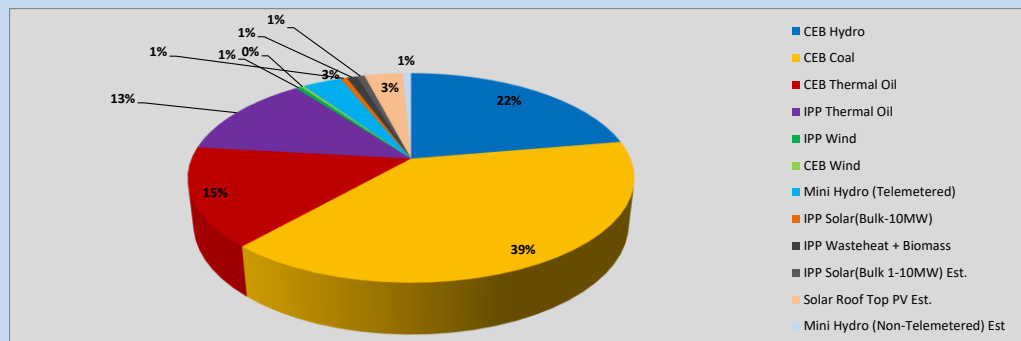


Table 01

	Generation (MWh)
CEB Hydro	11,177
CEB Coal	19,696
CEB Thermal Oil	7,664
IPP Thermal Oil	6,472
IPP Wind	236
CEB Wind	146
Mini Hydro (Telemetered)	1,684
IPP Solar (Bulk)	291
IPP Waste heat + Biomass	432
Total Generation (Excluding estimated figures)	47,798
* Estimated unserved energy	0
* Estimated Mini Hydro (Non telemetered)	359
* Estimated IPP Solar PV (Bulk 1-10MW)	348
* Estimated Solar Roof Top PV	1670
Total Generation (Including estimated figures)	50,175

* Estimated figures of CEB generation report

Table 02

	Installed Capacity (MW)
CEB Hydro	1644
CEB Coal	810
CEB Thermal Oil	773.1
IPP Thermal Oil (West Coast)	270
IPP Wind	163
CEB Wind	100
Mini Hydro	422
IPP Waste heat + Biomass	54
IPP Solar	137
Rooftop Solar (Ordinary)	293
Rooftop Solar (LT Bulk)	272
Rooftop Solar (HT Bulk)	74

Data Source - Monthly Review Report [Nov-2023]

2. Cumulative Dispatch

Following data excludes the contribution from roof top solar, non telemetered solar and mini hydro plants

Table 03 - Current Month

Category	Dispatch (GWh)	
CEB Hydro	286	22.48%
CEB Coal	520	40.92%
CEB Thermal Oil	192	15.08%
IPP Thermal	141	11.12%
SPP Wind	9	0.73%
CEB Wind	10	0.78%
Mini Hydro *	38	3.01%
IPP Solar *	67	5.28%
IPP Waste heat + BMP	9	0.72%
Total	1,270	

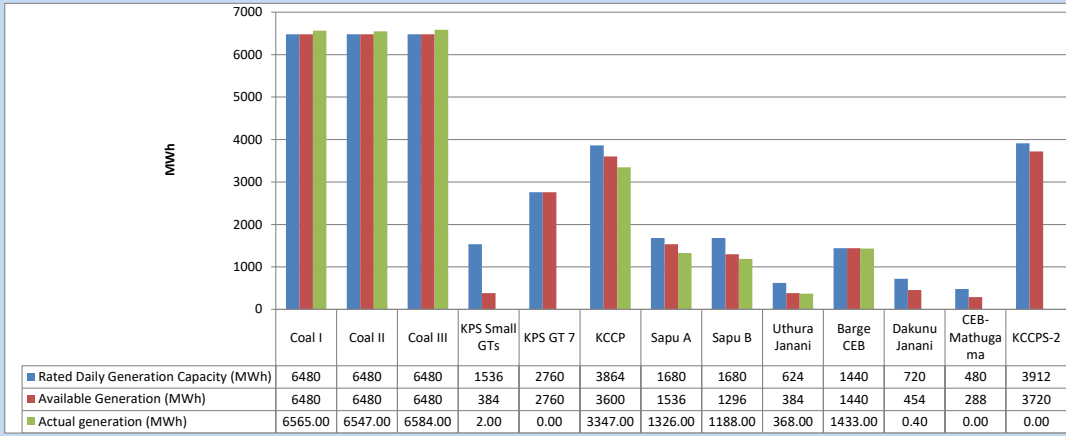
Table 04 - Current Year

Category	Dispatch (GWh)	
CEB Hydro	1,224	31.83%
CEB Coal	1,400	36.41%
CEB Thermal Oil	351	9.13%
IPP Thermal	310	8.06%
SPP Wind	45	1.18%
CEB Wind	54	1.41%
Mini Hydro *	230	5.97%
IPP Solar *	199	5.18%
IPP Waste heat	32	0.83%
Total	3,845	

*Including estimated contribution from non telemetered plants

3. CEB owned Thermal Plant Dispatch

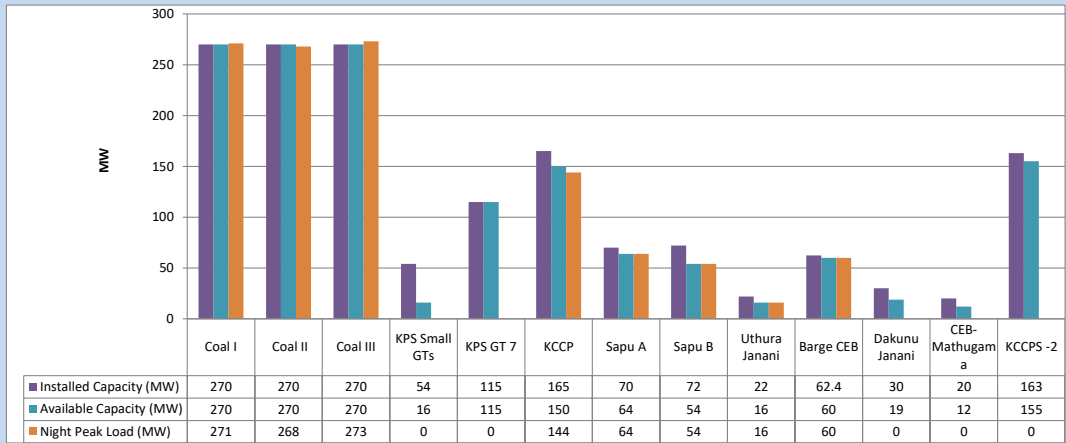
March 27, 2024



Available Generation is estimated based on plant availability at 6.00am on

March 28, 2024

4. CEB owned Thermal Plant Loading at the Night Peak

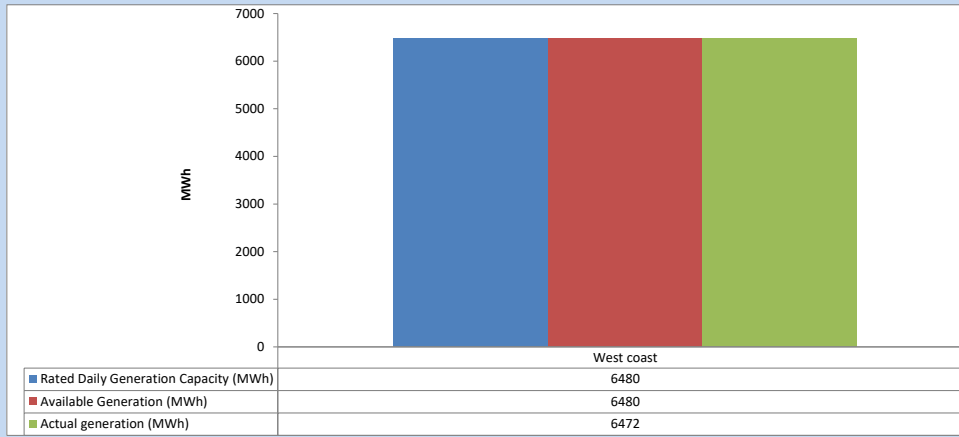


Plant availability is recorded at 6.00 am on

March 28, 2024

5. IPP owned Thermal Plant Dispatch

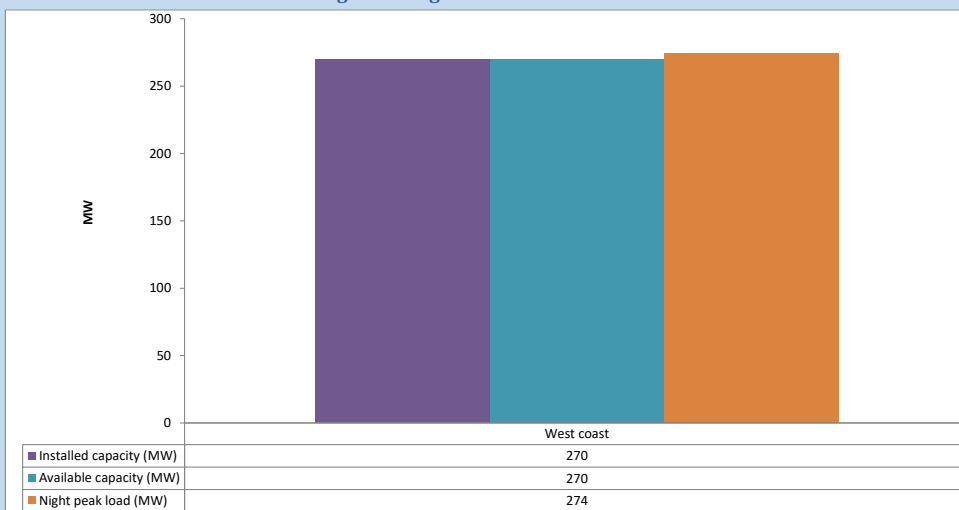
March 27, 2024



Available Generation is estimated based on plant availability at 6.00am on

March 28, 2024

6. IPP owned Thermal Plant Loading at the Night Peak

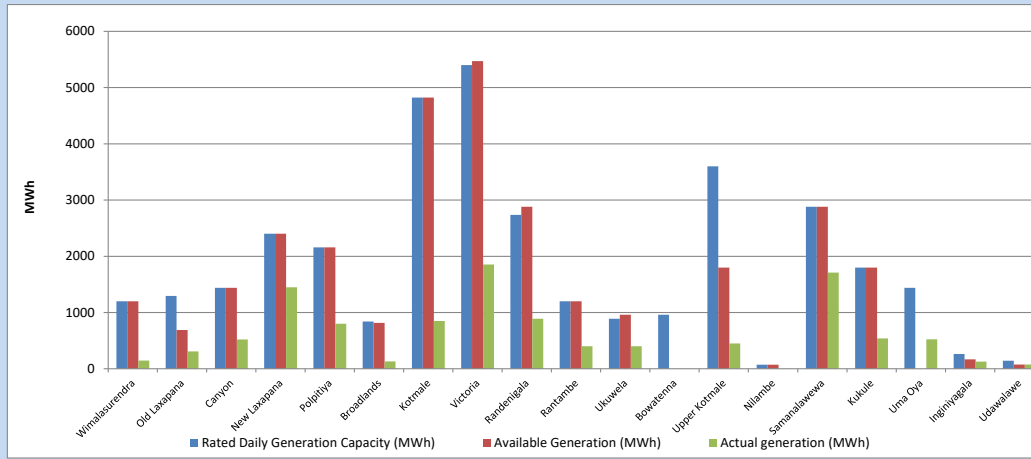


Plant availability is recorded at 6.00 am on

March 28, 2024

7. Major Hydro Plant Dispatch

March 27, 2024

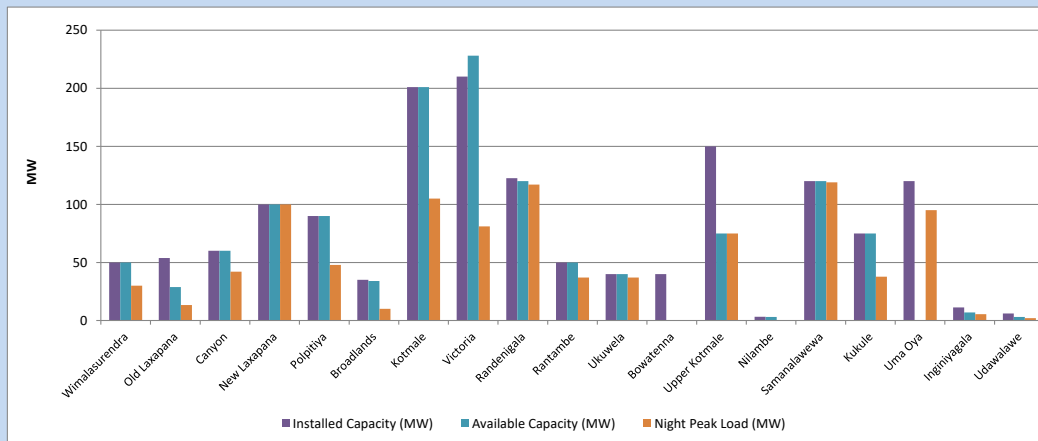


Available Generation is estimated based on plant availability at 6.00am on
Broadlands power plant is operating in the Commissioning Stage

March 28, 2024

8. Major Hydro Plant Loading at Night Peak

March 27, 2024



Plant availability is recorded at 6.00 am on
Broadlands power plant is operating in the Commissioning Stage

March 28, 2024

9. Summary of Major Plant performance

Table 05

Plant	Maximum Available Total Capacity	Plant Availability	Night peak Load	Plant Dispatch
	(MW)	(MW)	(MW)	(MWh)
Wimalasurendra	50	50	30	145
Old Laxapana	54	29	13	310
Canyon	60	60	42	522
New Laxapana	100	100	100	1,448
Polpitiya	90	90	48	800
Broadlands	35	34	10	131
Kotmale	201	201	105	850
Victoria	210	228	81	1,855
Randenigala	123	120	117	889
Rantambe	50	50	37	402
Ukuwela	40	40	37	401
Bowatenna	40	0	0	0
Upper Kotmale	150	75	75	449
Nilambe	3	3	0	0
Samanalawewa	120	120	119	1,711
Kukule	75	75	38	539
Uma Oya (Testing)	120	0	95	523
Inginiyagala	11	7	6	128
Udawalawe	6	3	2	74
Puttalam Coal I	270	270	271	6,565
Puttalam Coal II	270	270	268	6,547
Puttalam Coal III	270	270	273	6,584
KPS Small GTs	54	16	0	2
KPS GT 7	115	115	0	0
KCCP	165	150	144	3,347
Sapugaskanda A	70	64	64	1,326
Sapugaskanda B	72	54	54	1,188
Uthura Janani	22	16	16	368
Barge CEB	62	60	60	1,433
CEB-Hambantota	30	19	0	0
CEB-Mathugama	20	12	0	0
ACE Matara	24	0	0	0
Asia Power	50	0	0	0
KCCPS -2	163	155	0	0
West Coast	270	270	274	6,472
Nothern Power	36	0	0	0
ACE Embilipitiya	93	0	0	0
Total	3,594	3,026	2,494	47,798

Note-

Plant availability is the availability recorded at 6 am on

March 28, 2024

Installed Capacity is sourced from CEB Annual Report- 2022

10. Contribution to the Night Peak in MW

March 27, 2024

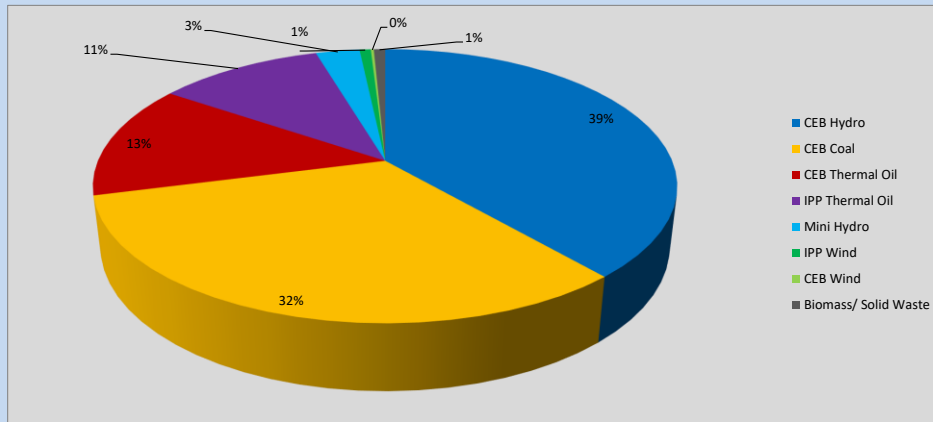


Table 06

CEB Hydro	967	MW
CEB Coal	812	MW
CEB Thermal Oil	338	MW
IPP Thermal Oil	274	MW
Mini Hydro (Telemetered)	73	MW
IPP Wind	18.6	MW
CEB Wind	4.9	MW
Biomass/ Solid Waste	19	MW

Recorded Peak Demand Data

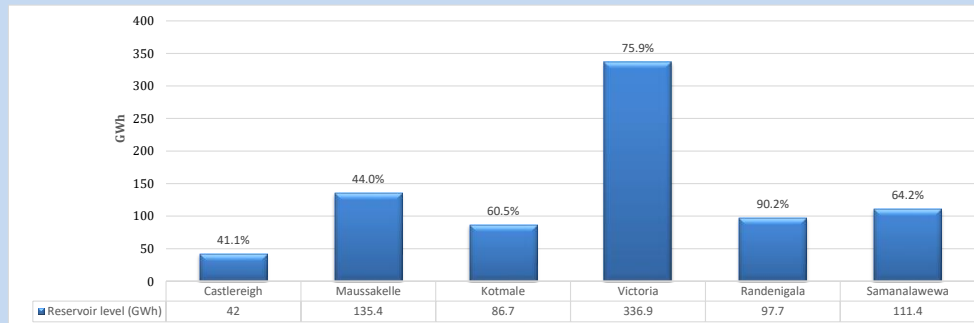
Table 07

Night Peak*	2,507	MW
Day Peak Maximum Demand	2,301	MW
Day Peak Minimum Demand	1,815	MW
Off Peak Minimum Demand	1,579	MW

Above figures are excluding contribution from roof top solar, non telemetered solar and mini hydro plants

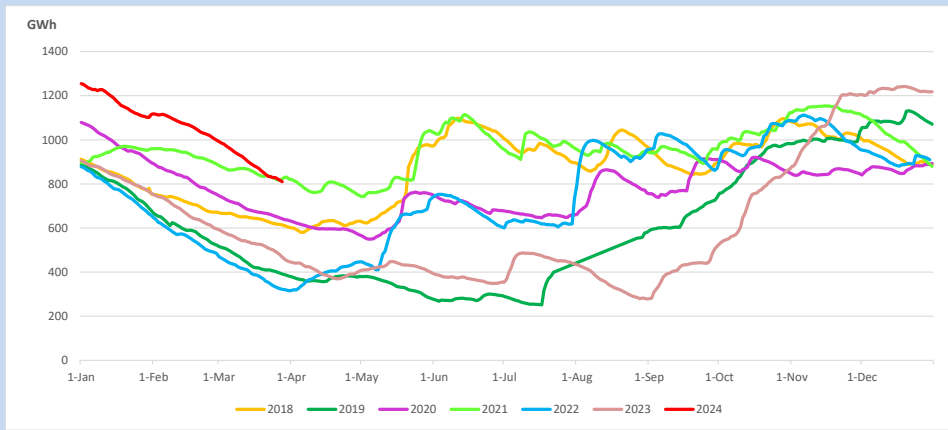
Reservoir Levels -

as at 06.00 Hr on March 28, 2024

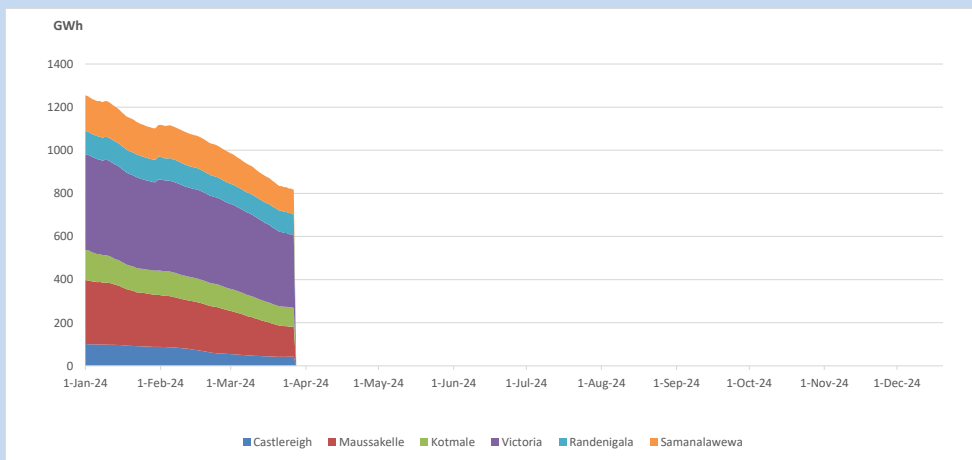


Total Reservoir Level 810.1 GWh
 % of Total capacity 63.3%

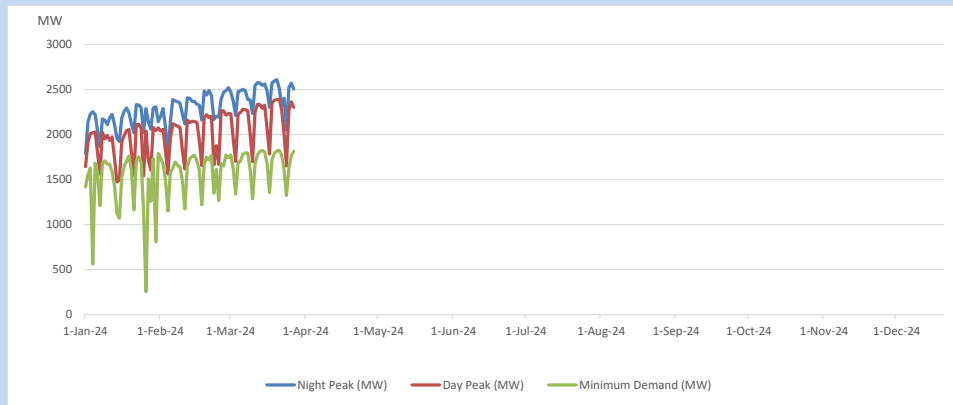
11. Comparison of Total Reservoir Storage Levels with Past Years



12. Variation of Major Hydro Reservoir Levels in the current year (GWh)



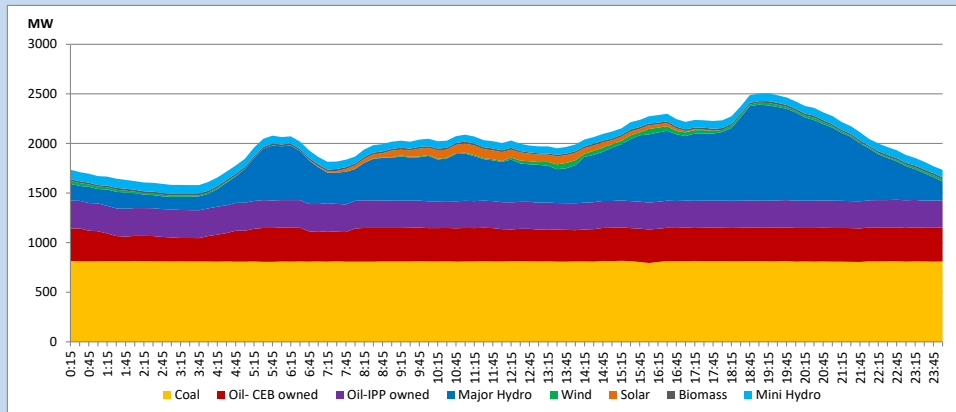
13. Variation of Demand during the current year



The above figures are excluding contribution from roof top solar, non telemetered solar and mini hydro plants

14. Daily Load Curve

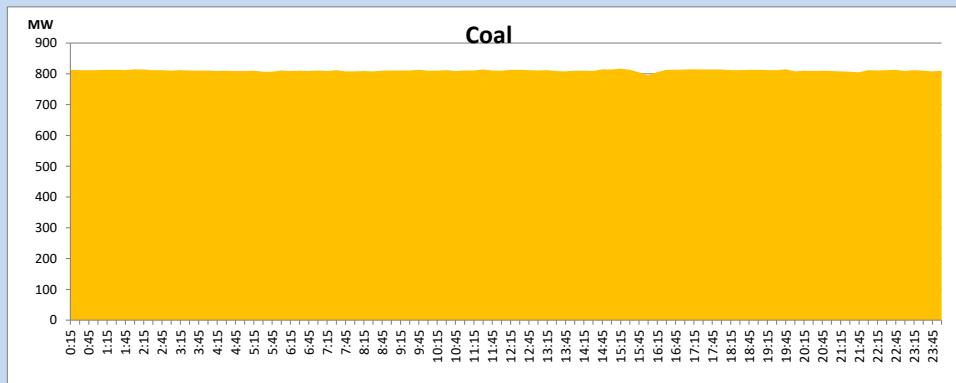
March 27, 2024



Solar and wind data is based on Telemetered Power Stations only

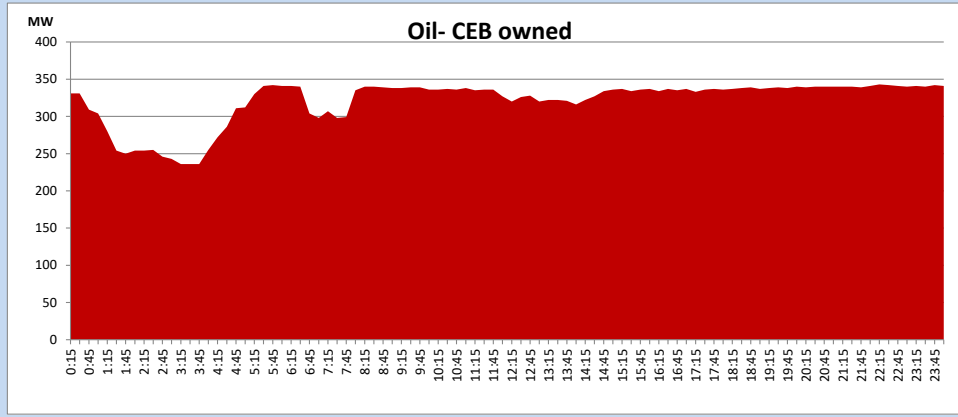
Coal Generation during

March 27, 2024



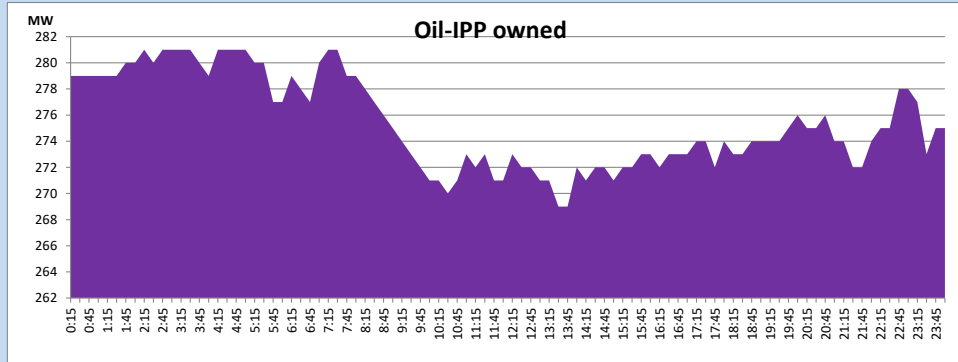
CEB Oil Plant Generation during

March 27, 2024



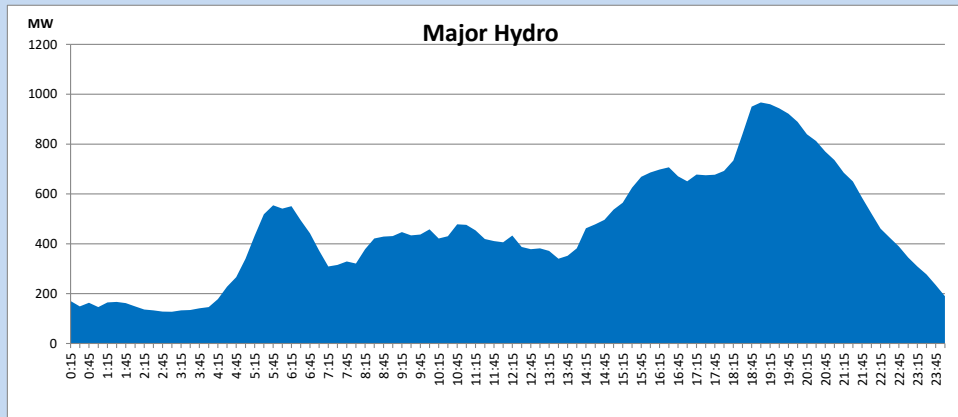
IPP Oil Plant Generation during

March 27, 2024



Major Hydro Generation during

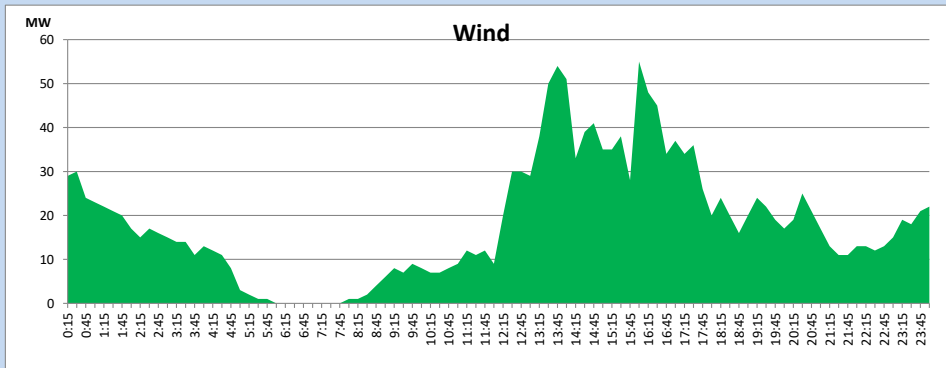
March 27, 2024



Wind Generation during

March 27, 2024

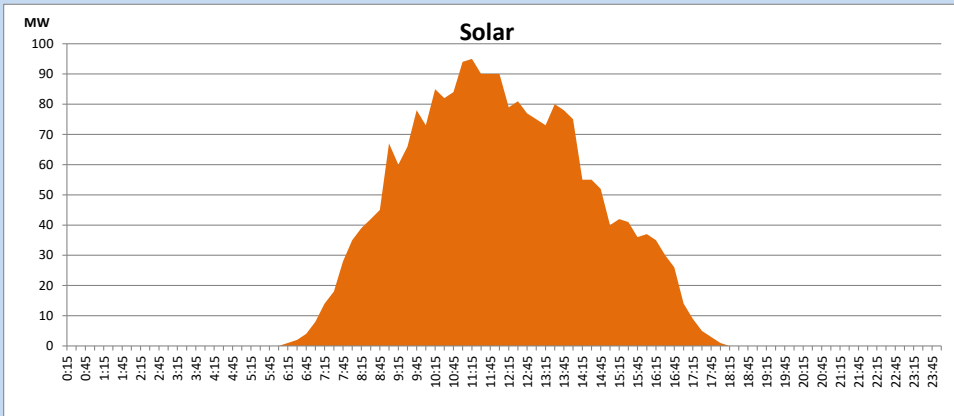
Based on Telemetered Power Stations only



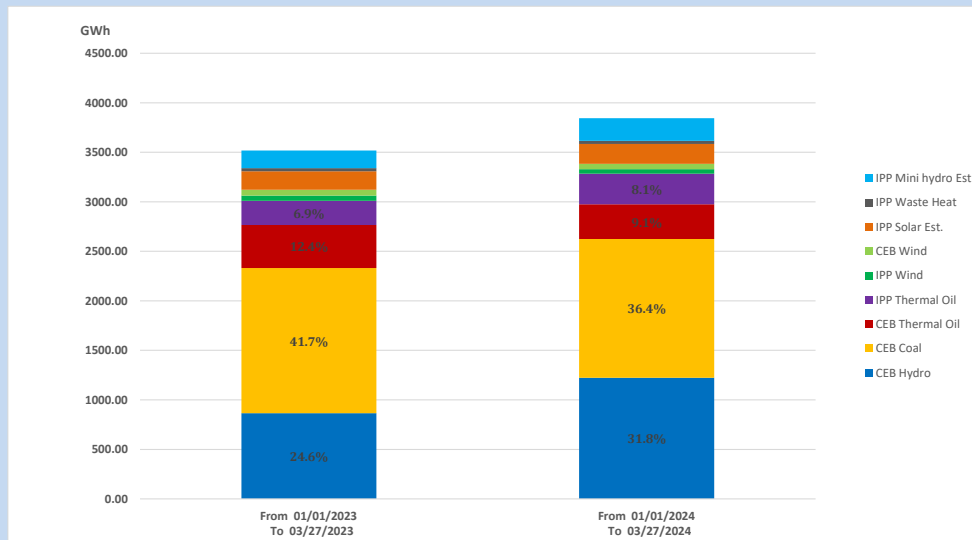
Solar Generation during

March 27, 2024

Based on Telemetered Power Stations only



15. Cumulative Dispatch Comparison with Last Year



Cumulative dispatch
 From 01/01/2023 To 03/27/2023
 From 01/01/2024 To 03/27/2024

3518 GWh
 3845 GWh

The above figures are including contribution from roof top solar, non telemetered solar and mini hydro plants)
 Unused energy due to power cuts has been excluded in 2023

Thermal Plant Fuel types

Table 08

Power Station	Primary Fuel
CEB Thermal	
Sapugaskanda 1	Heavy Fuel
Sapugaskanda 2	Heavy Fuel
Kelanitissa Small Gas Turbines	Auto Diesel
GT 7 - Kelanitissa	Auto Diesel
Kelanitissa CCY	Naphtha or Diesel
Lakvijaya 1	Coal
Lakvijaya 2	Coal
Lakvijaya 3	Coal
Uthuru Janani	Heavy Fuel
Barge CEB	Heavy Fuel
KCCPS -2	Auto Diesel

Power Station	Primary Fuel
Private Thermal	
West Coast	Auto Diesel / Heavy Fuel

Major Incidents reported during the day

March 27, 2024

- 1) WPS GSS 132/33kV T/F 03 tripped only from 33kV side along with the 33kV feeder 06 at 07:52hrs due to the operation of O/C & E/F protection causing 33kV B/S 02 and all connected feeders to be dead. The T/F, 33kV B/S and all affected feeders except F06 were normalized by 07:59hrs.
- 2) New Laxapana unit 02 resumed generation at 14:23hrs.