

Generation and Reservoirs Statistics

March 26, 2024



PUBLIC UTILITIES COMMISSION OF SRI LANKA

1. Daily Generation Mix in MWh

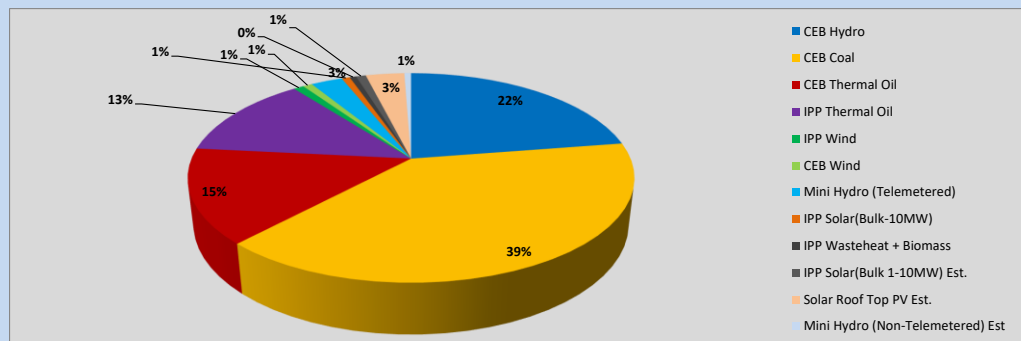


Table 01

	Generation (MWh)
CEB Hydro	11,273
CEB Coal	19,732
CEB Thermal Oil	7,302
IPP Thermal Oil	6,454
IPP Wind	445
CEB Wind	398
Mini Hydro (Telemetered)	1,371
IPP Solar (Bulk)	354
IPP Waste heat + Biomass	285
Total Generation (Excluding estimated figures)	47,614
* Estimated unserved energy	0
* Estimated Mini Hydro (Non telemetered)	292
* Estimated IPP Solar PV (Bulk 1-10MW)	425
* Estimated Solar Roof Top PV	1670
Total Generation (Including estimated figures)	50,001

* Estimated figures of CEB generation report

Table 02

	Installed Capacity (MW)
CEB Hydro	1644
CEB Coal	810
CEB Thermal Oil	773.1
IPP Thermal Oil (West Coast)	270
IPP Wind	163
CEB Wind	100
Mini Hydro	422
IPP Waste heat + Biomass	54
IPP Solar	137
Rooftop Solar (Ordinary)	293
Rooftop Solar (LT Bulk)	272
Rooftop Solar (HT Bulk)	74

Data Source - Monthly Review Report [Nov-2023]

2. Cumulative Dispatch

Following data excludes the contribution from roof top solar, non telemetered solar and mini hydro plants

Table 03 - Current Month

Category	Dispatch (GWh)	
CEB Hydro	274	22.49%
CEB Coal	500	40.98%
CEB Thermal Oil	184	15.10%
IPP Thermal	135	11.04%
SPP Wind	9	0.74%
CEB Wind	10	0.80%
Mini Hydro *	37	3.00%
IPP Solar *	65	5.29%
IPP Waste heat + BMP	9	0.73%
Total	1,220	

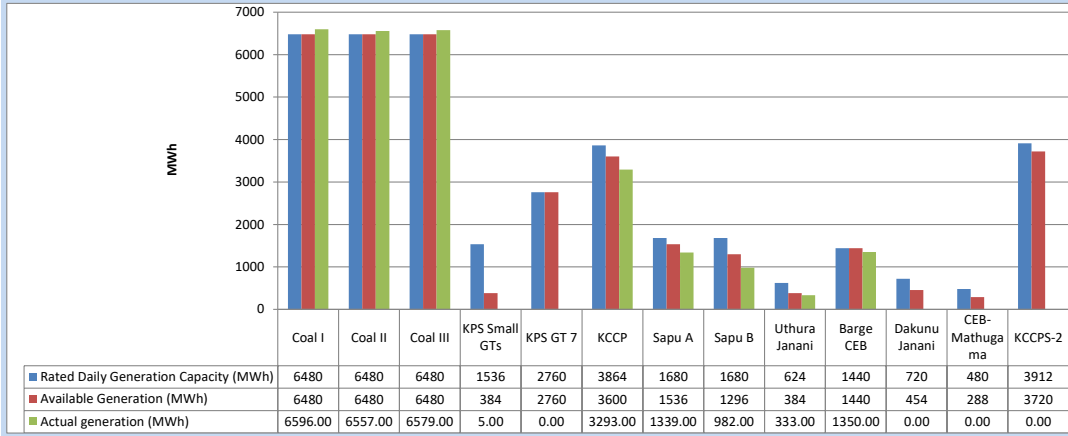
Table 04 - Current Year

Category	Dispatch (GWh)	
CEB Hydro	1,213	31.96%
CEB Coal	1,380	36.37%
CEB Thermal Oil	344	9.05%
IPP Thermal	303	8.00%
SPP Wind	45	1.19%
CEB Wind	54	1.42%
Mini Hydro *	228	6.00%
IPP Solar *	197	5.19%
IPP Waste heat	31	0.83%
Total	3,795	

*Including estimated contribution from non telemetered plants

3. CEB owned Thermal Plant Dispatch

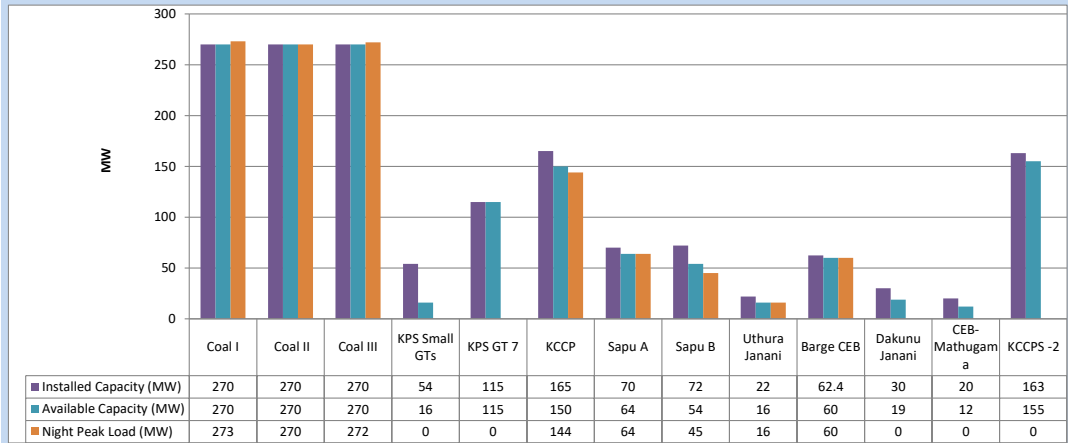
March 26, 2024



Available Generation is estimated based on plant availability at 6.00am on

March 27, 2024

4. CEB owned Thermal Plant Loading at the Night Peak

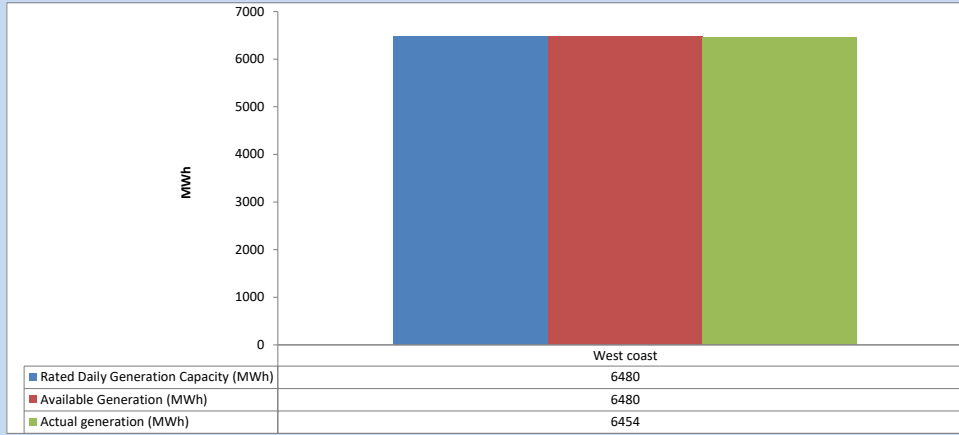


Plant availability is recorded at 6.00 am on

March 27, 2024

5. IPP owned Thermal Plant Dispatch

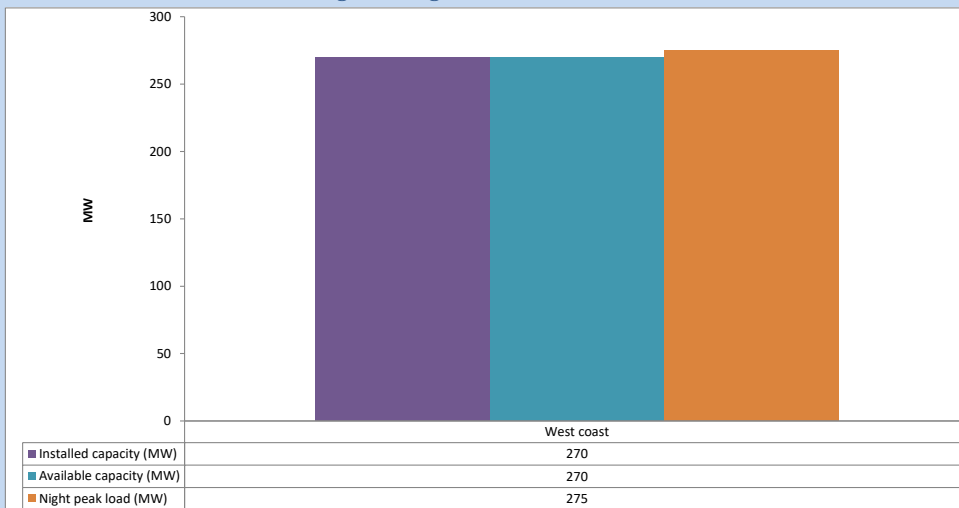
March 26, 2024



Available Generation is estimated based on plant availability at 6.00am on

March 27, 2024

6. IPP owned Thermal Plant Loading at the Night Peak

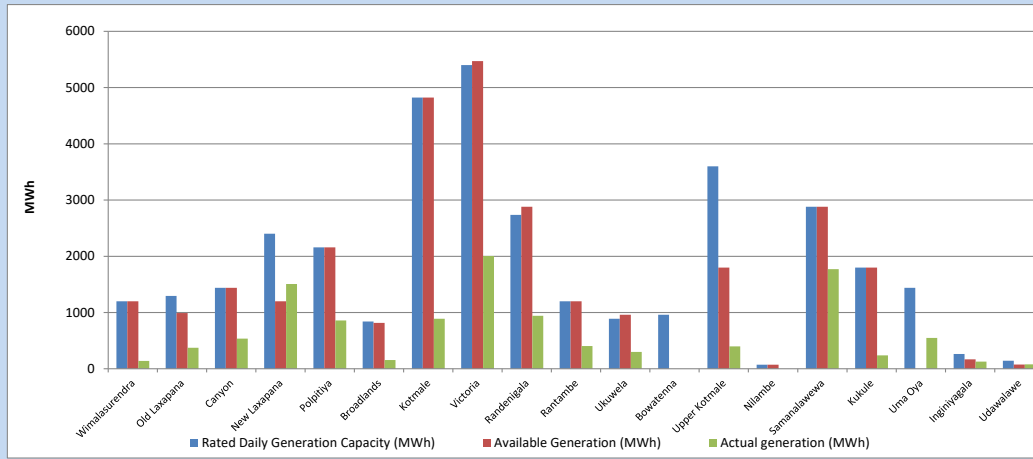


Plant availability is recorded at 6.00 am on

March 27, 2024

7. Major Hydro Plant Dispatch

March 26, 2024

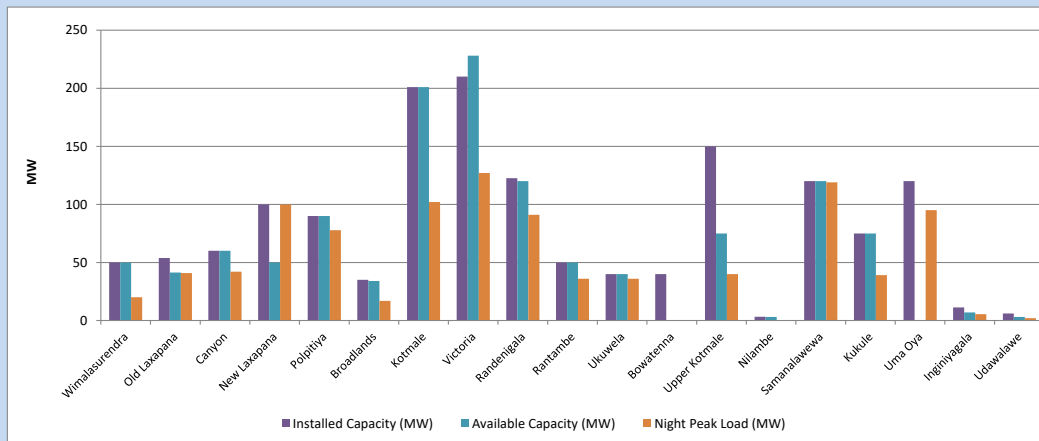


Available Generation is estimated based on plant availability at 6.00am on
Broadlands power plant is operating in the Commissioning Stage

March 27, 2024

8. Major Hydro Plant Loading at Night Peak

March 26, 2024



Plant availability is recorded at 6.00 am on
Broadlands power plant is operating in the Commissioning Stage

March 27, 2024

9. Summary of Major Plant performance

Table 05

Plant	Maximum Available Total Capacity	Plant Availability	Night peak Load	Plant Dispatch
	(MW)	(MW)	(MW)	(MWh)
Wimalasurendra	50	50	20	139
Old Laxapana	54	41	41	374
Canyon	60	60	42	535
New Laxapana	100	50	100	1,508
Polpitiya	90	90	78	860
Broadlands	35	34	17	155
Kotmale	201	201	102	890
Victoria	210	228	127	2,004
Randenigala	123	120	91	943
Rantambe	50	50	36	404
Ukuwela	40	40	36	301
Bowatenna	40	0	0	0
Upper Kotmale	150	75	40	399
Nilambe	3	3	0	0
Samanalawewa	120	120	119	1,770
Kukule	75	75	39	239
Uma Oya (Testing)	120	0	95	548
Inginiyagala	11	7	6	127
Udawalawe	6	3	2	77
Puttalam Coal I	270	270	273	6,596
Puttalam Coal II	270	270	270	6,557
Puttalam Coal III	270	270	272	6,579
KPS Small GTs	54	16	0	5
KPS GT 7	115	115	0	0
KCCP	165	150	144	3,293
Sapugaskanda A	70	64	64	1,339
Sapugaskanda B	72	54	45	982
Uthura Janani	22	16	16	333
Barge CEB	62	60	60	1,350
CEB-Hambantota	30	19	0	0
CEB-Mathugama	20	12	0	0
ACE Matara	24	0	0	0
Asia Power	50	0	0	0
KCCPS -2	163	155	0	0
West Coast	270	270	275	6,454
Nothern Power	36	0	0	0
ACE Embilipitiya	93	0	0	0
Total	3,594	2,988	2,558	47,614

Note-

Plant availability is the availability recorded at 6 am on

March 27, 2024

Installed Capacity is sourced from CEB Annual Report- 2022

10. Contribution to the Night Peak in MW

March 26, 2024

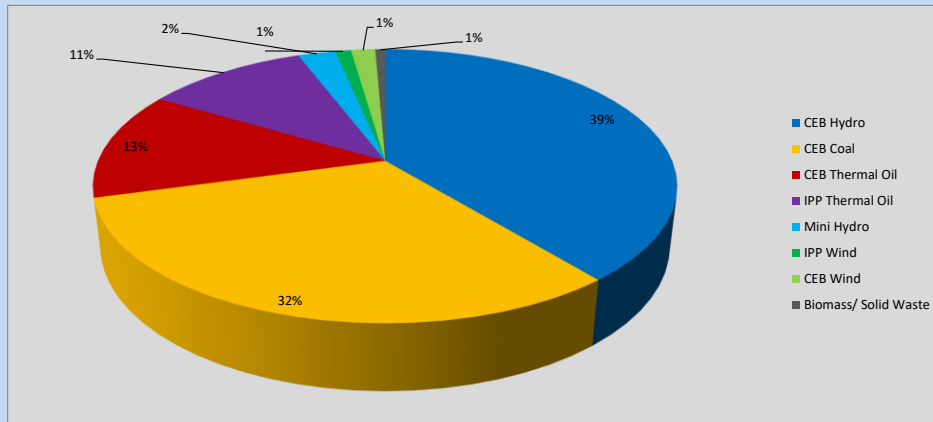


Table 06

CEB Hydro	1004	MW
CEB Coal	815	MW
CEB Thermal Oil	329	MW
IPP Thermal Oil	275	MW
Mini Hydro (Telemetered)	64	MW
IPP Wind	26.9	MW
CEB Wind	41.2	MW
Biomass/ Solid Waste	17	MW

Recorded Peak Demand Data

Table 07

Night Peak*	2,572	MW
Day Peak Maximum Demand	2,363	MW
Day Peak Minimum Demand	1,766	MW
Off Peak Minimum Demand	1,521	MW

Above figures are excluding contribution from roof top solar, non telemetered solar and mini hydro plants

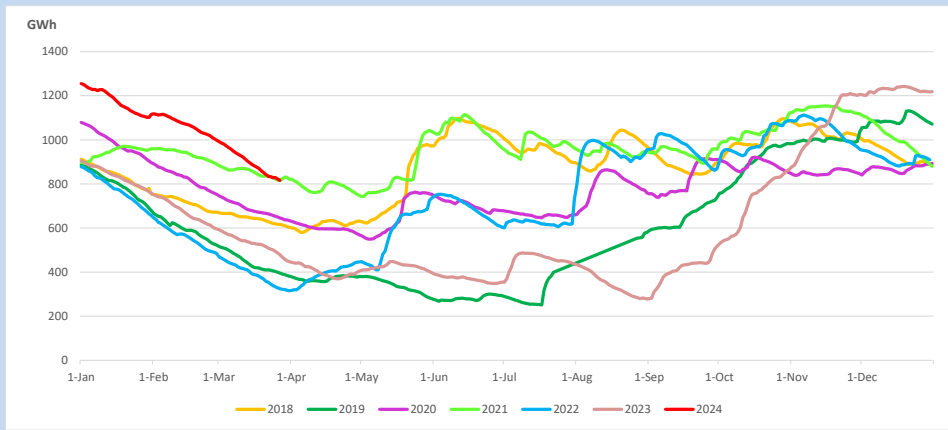
Reservoir Levels -

as at 06.00 Hr on March 27, 2024

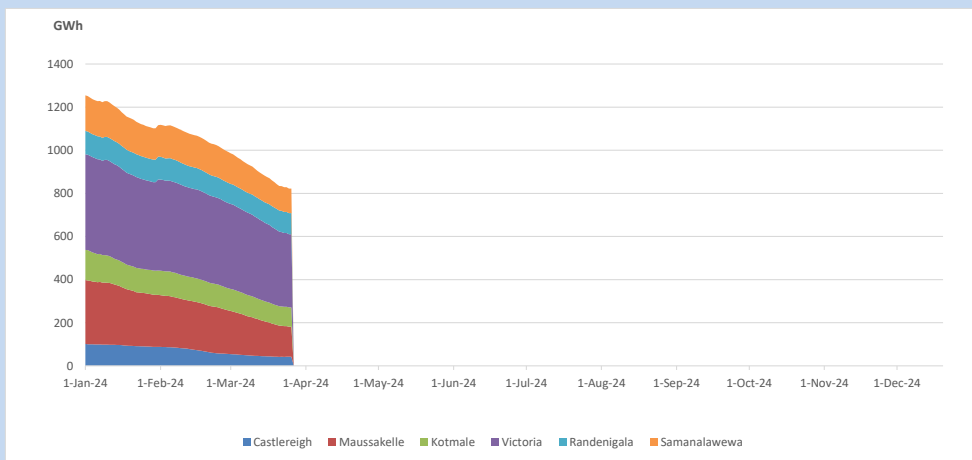


Total Reservoir Level 816 GWh
% of Total capacity 63.8%

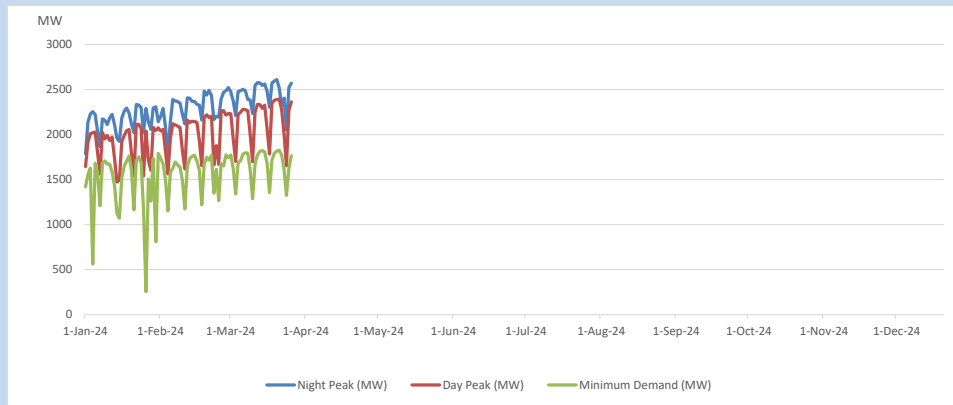
11. Comparison of Total Reservoir Storage Levels with Past Years



12. Variation of Major Hydro Reservoir Levels in the current year (GWh)



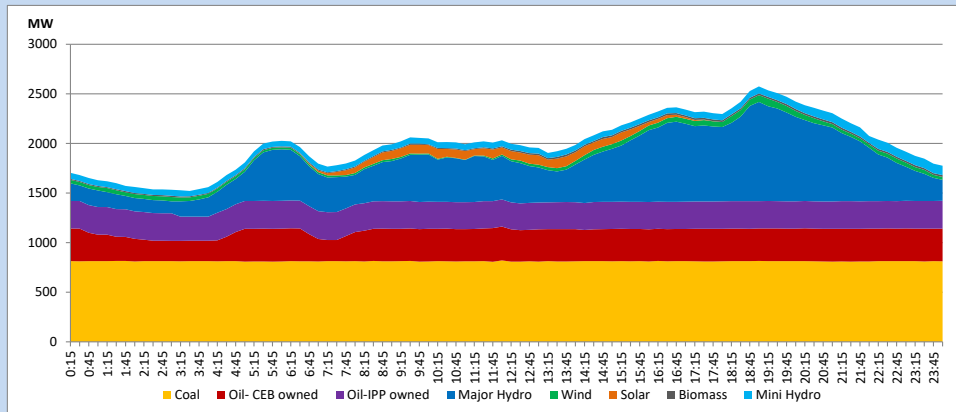
13. Variation of Demand during the current year



The above figures are excluding contribution from roof top solar, non telemetered solar and mini hydro plants

14. Daily Load Curve

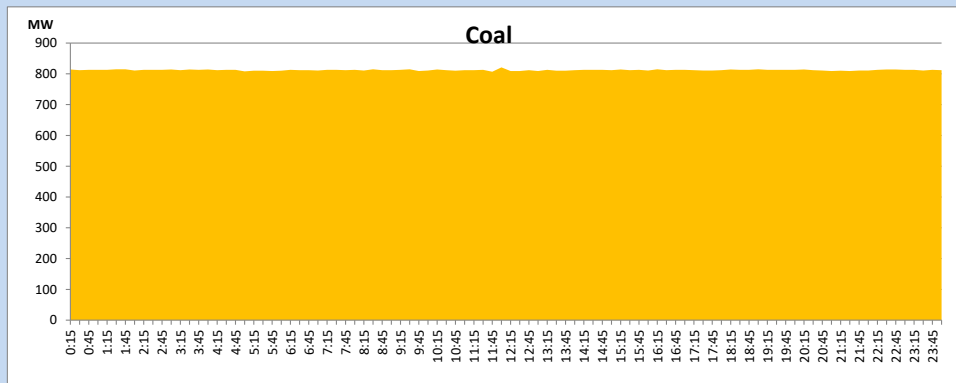
March 26, 2024



Solar and wind data is based on Telemetered Power Stations only

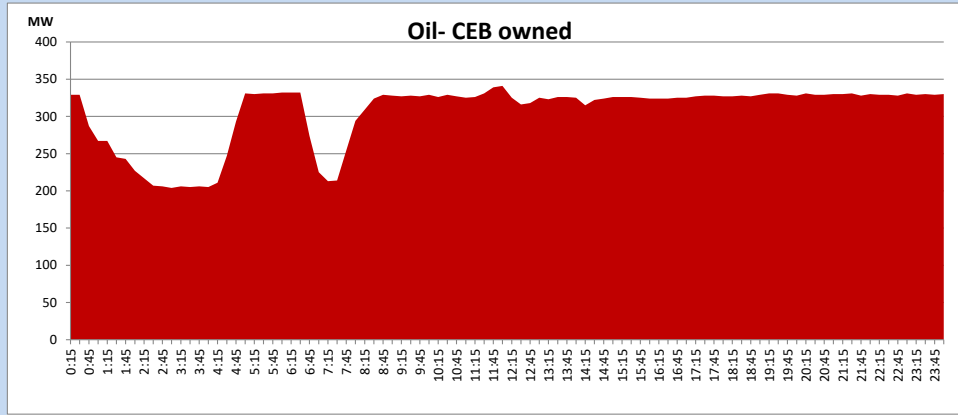
Coal Generation during

March 26, 2024



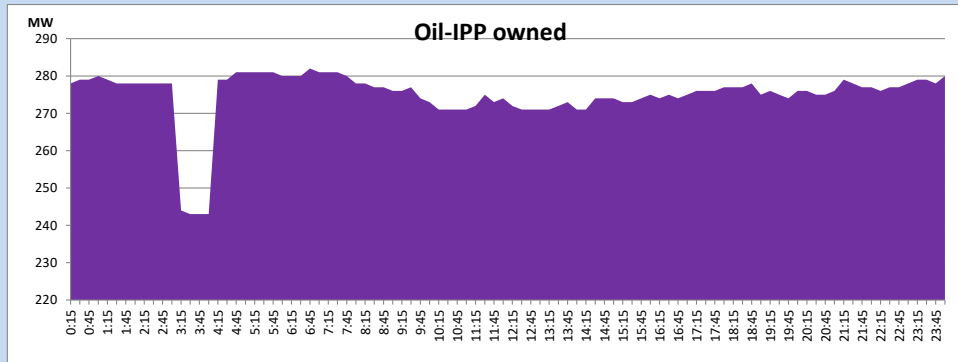
CEB Oil Plant Generation during

March 26, 2024



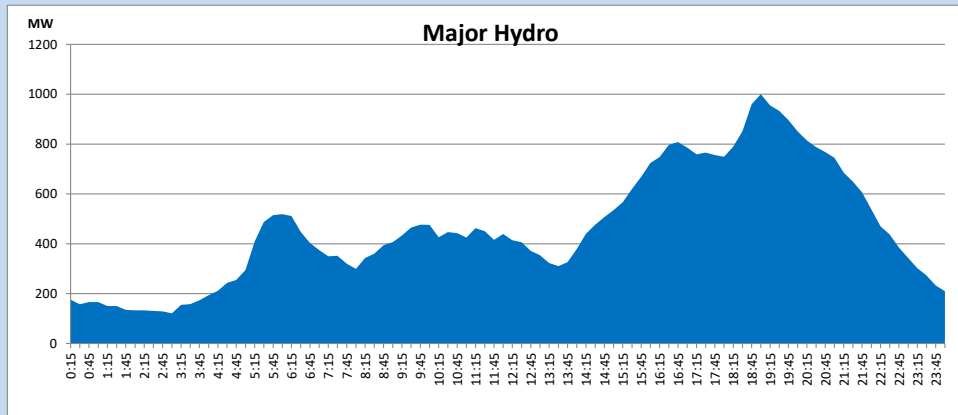
IPP Oil Plant Generation during

March 26, 2024



Major Hydro Generation during

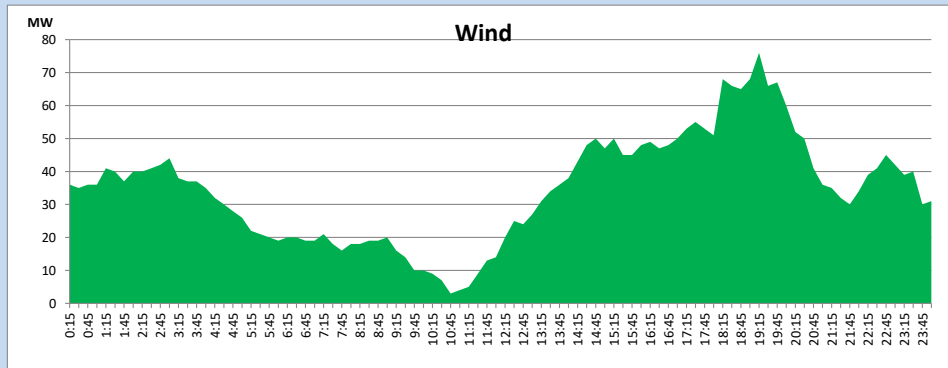
March 26, 2024



Wind Generation during

March 26, 2024

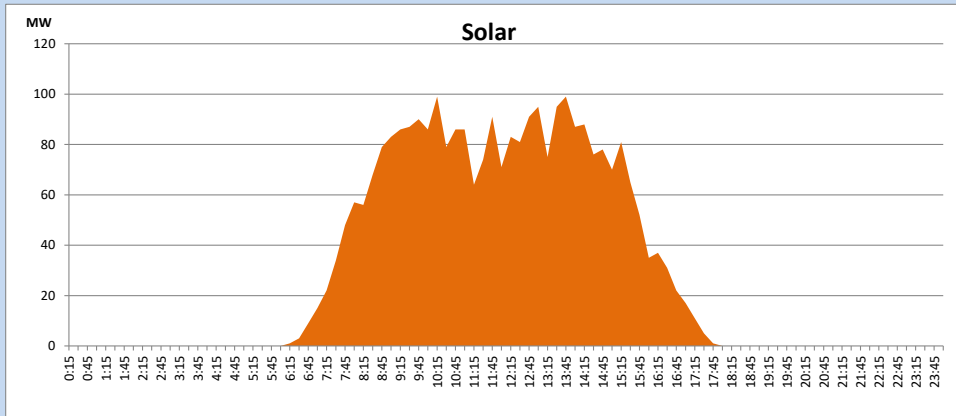
Based on Telemetered Power Stations only



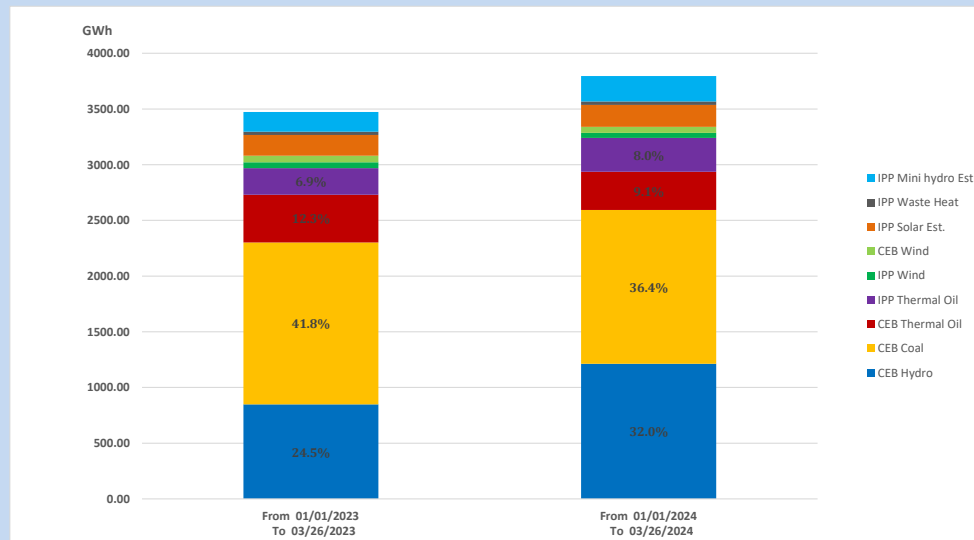
Solar Generation during

March 26, 2024

Based on Telemetered Power Stations only



15. Cumulative Dispatch Comparison with Last Year



Cumulative dispatch
 From 01/01/2023 To 03/26/2023
 From 01/01/2024 To 03/26/2024

3473 GWh
 3795 GWh

The above figures are including contribution from roof top solar, non telemetered solar and mini hydro plants)
 Unserviced energy due to power cuts has been excluded in 2023

Thermal Plant Fuel types

Table 08

Power Station	Primary Fuel
CEB Thermal	
Sapugaskanda 1	Heavy Fuel
Sapugaskanda 2	Heavy Fuel
Kelanitissa Small Gas Turbines	Auto Diesel
GT 7 - Kelanitissa	Auto Diesel
Kelanitissa CCY	Naphtha or Diesel
Lakvijaya 1	Coal
Lakvijaya 2	Coal
Lakvijaya 3	Coal
Uthuru Janani	Heavy Fuel
Barge CEB	Heavy Fuel
KCCPS -2	Auto Diesel

Power Station	Primary Fuel
Private Thermal	
West Coast	Auto Diesel / Heavy Fuel

Major Incidents reported during the day

March 26, 2024

- 1) New Laxapana Unit 02 tripped at 09:29hrs rejecting 40MW from the system and resumed generation at 11:54hrs. The unit tripped again at 12:00hrs rejecting 50MW from the system and resumed generation at 15:24hrs.
- 2) Kolonnawa - S'Japura - Pannipitiya 132kV cct. 02, which was tripped on 24.03.2024 was normalized at 15:13hrs.
- 3) New Laxapana Unit 02 made a forced shutdown at 06:01hrs (27.03.2024) due to a turbine guide bearing temperature high alarm. The unit is yet to resume generation.