

Generation and Reservoirs Statistics

April 23, 2024



PUBLIC UTILITIES COMMISSION OF SRI LANKA

1. Daily Generation Mix in MWh

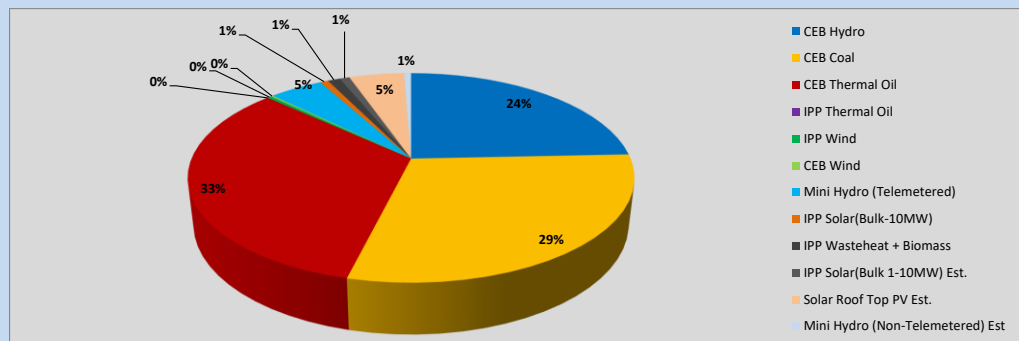


Table 01

	Generation (MWh)
CEB Hydro	10,644
CEB Coal	12,911
CEB Thermal Oil	14,423
IPP Thermal Oil	-
IPP Wind	163
CEB Wind	81
Mini Hydro (Telemetered)	2,020
IPP Solar (Bulk)	307
IPP Waste heat + Biomass	465
Total Generation (Excluding estimated figures)	41,014
* Estimated unserved energy	0
* Estimated Mini Hydro (Non telemetered)	268
* Estimated IPP Solar PV (Bulk 1-10MW)	378
* Estimated Solar Roof Top PV	2080
Total Generation (Including estimated figures)	43,740

* Estimated figures of CEB generation report

Table 02

	Installed Capacity (MW)
CEB Hydro	1644
CEB Coal	810
CEB Thermal Oil	773.1
IPP Thermal Oil (West Coast)	270
IPP Wind	163
CEB Wind	100
Mini Hydro	422
IPP Waste heat + Biomass	54
IPP Solar	137
Rooftop Solar (Ordinary)	293
Rooftop Solar (LT Bulk)	272
Rooftop Solar (HT Bulk)	74

Data Source - Monthly Review Report [Nov-2023]

2. Cumulative Dispatch

Following data excludes the contribution from roof top solar, non telemetered solar and mini hydro plants

Table 03 - Current Month

Category	Dispatch (GWh)	
CEB Hydro	273	26.82%
CEB Coal	388	38.09%
CEB Thermal Oil	153	15.05%
IPP Thermal	76	7.50%
SPP Wind	7	0.69%
CEB Wind	7	0.69%
Mini Hydro *	40	3.89%
IPP Solar *	65	6.38%
IPP Waste heat + BMP	9	0.87%
Total	1,019	

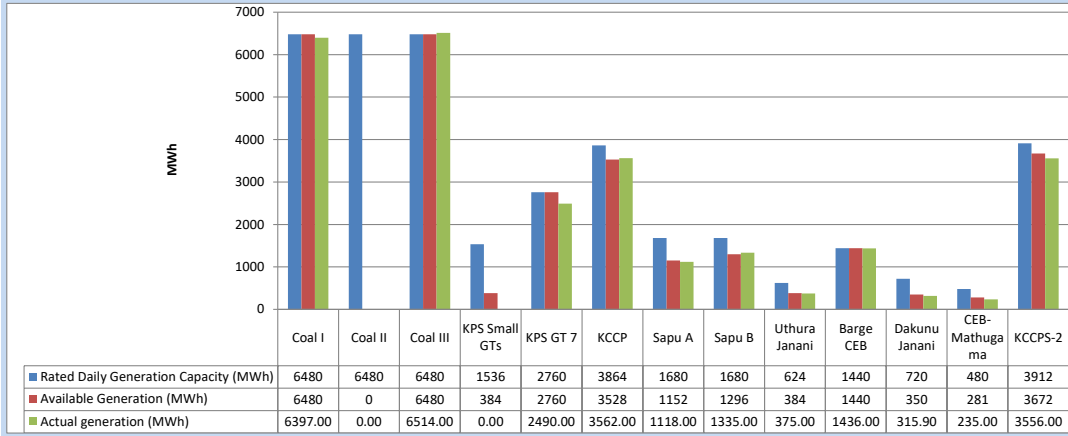
Table 04 - Current Year

Category	Dispatch (GWh)	
CEB Hydro	1,536	30.44%
CEB Coal	1,865	36.94%
CEB Thermal Oil	533	10.55%
IPP Thermal	408	8.08%
SPP Wind	53	1.06%
CEB Wind	62	1.23%
Mini Hydro *	275	5.44%
IPP Solar *	274	5.43%
IPP Waste heat	42	0.83%
Total	5,048	

*Including estimated contribution from non telemetered plants

3. CEB owned Thermal Plant Dispatch

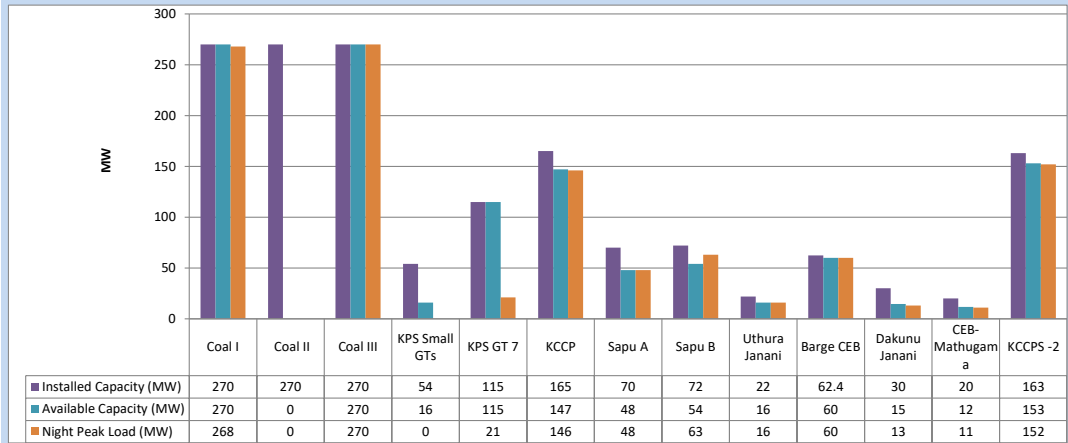
April 23, 2024



Available Generation is estimated based on plant availability at 6.00am on

April 24, 2024

4. CEB owned Thermal Plant Loading at the Night Peak

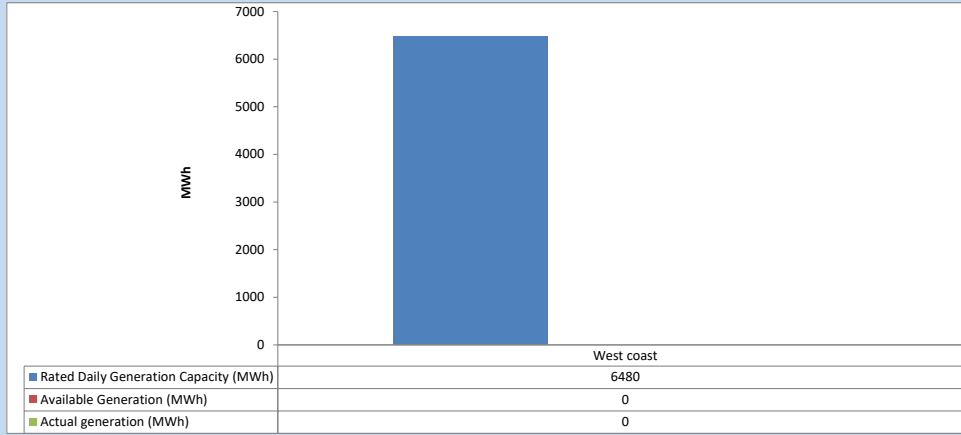


Plant availability is recorded at 6.00 am on

April 24, 2024

5. IPP owned Thermal Plant Dispatch

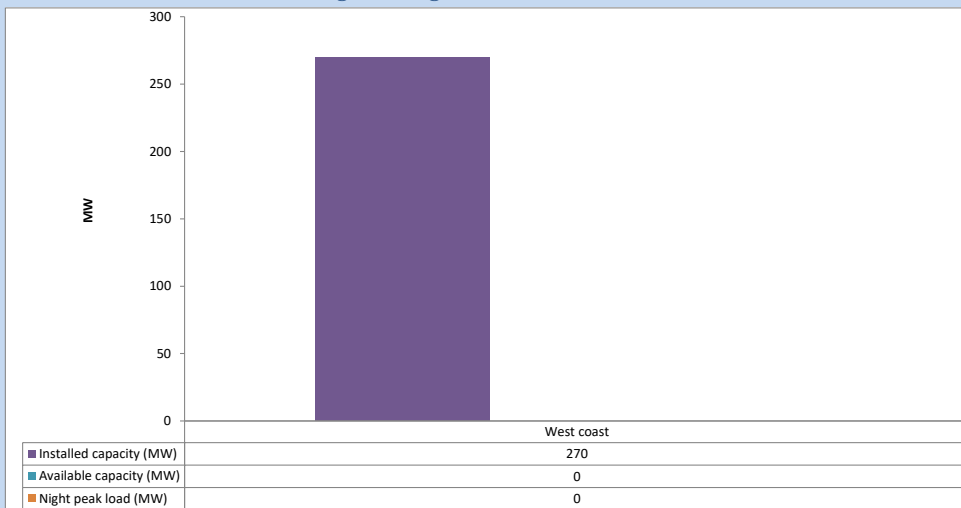
April 23, 2024



Available Generation is estimated based on plant availability at 6.00am on

April 24, 2024

6. IPP owned Thermal Plant Loading at the Night Peak

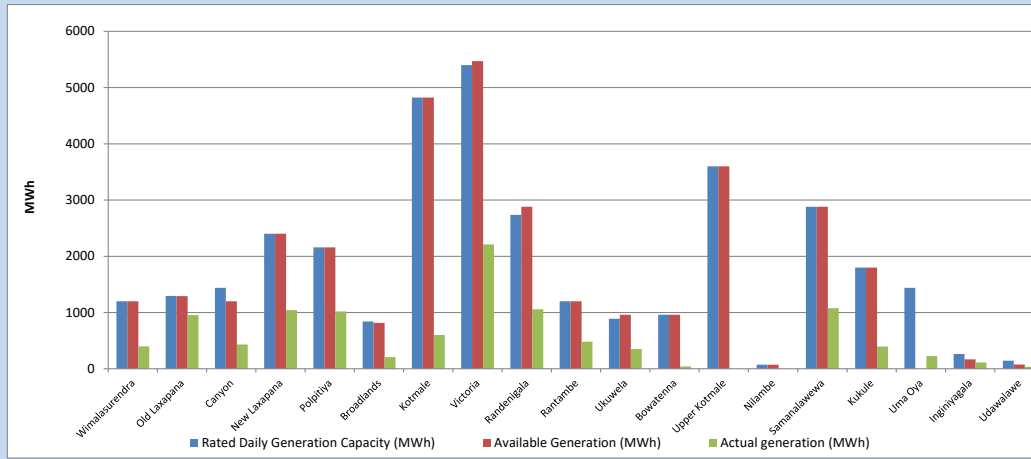


Plant availability is recorded at 6.00 am on

April 24, 2024

7. Major Hydro Plant Dispatch

April 23, 2024

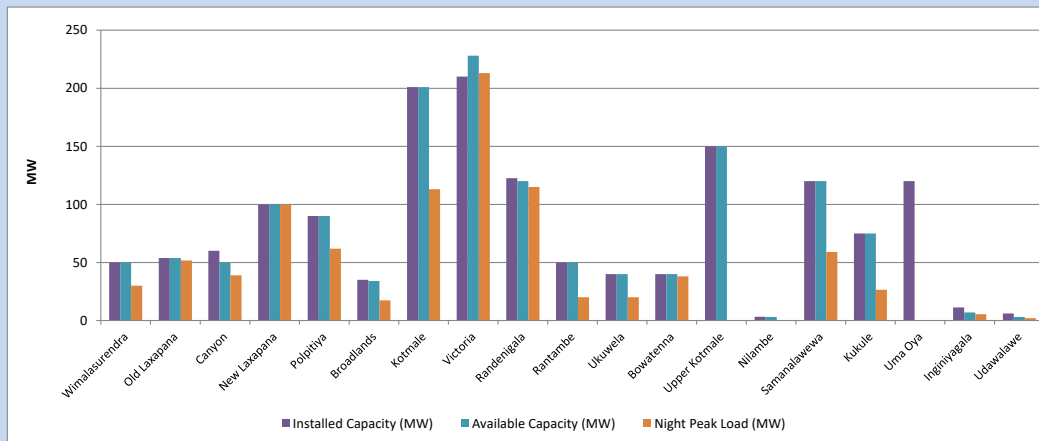


Available Generation is estimated based on plant availability at 6.00am on
Broadlands power plant is operating in the Commissioning Stage

April 24, 2024

8. Major Hydro Plant Loading at Night Peak

April 23, 2024



Plant availability is recorded at 6.00 am on
Broadlands power plant is operating in the Commissioning Stage

April 24, 2024

9. Summary of Major Plant performance

Table 05

Plant	Maximum Available Total Capacity	Plant Availability	Night peak Load	Plant Dispatch
	(MW)	(MW)	(MW)	(MWh)
Wimalasurendra	50	50	30	399
Old Laxapana	54	54	52	954
Canyon	60	50	39	433
New Laxapana	100	100	100	1,043
Polpitiya	90	90	62	1,020
Broadlands	35	34	17	208
Kotmale	201	201	113	600
Victoria	210	228	213	2,211
Randenigala	123	120	115	1,057
Rantambe	50	50	20	481
Ukuwela	40	40	20	351
Bowatenna	40	40	38	41
Upper Kotmale	150	150	0	0
Nilambe	3	3	0	0
Samanalawewa	120	120	59	1,078
Kukule	75	75	26	394
Uma Oya (Testing)	120	0	0	226
Inginiyagala	11	7	5	113
Udawalawe	6	3	2	36
Puttalam Coal I	270	270	268	6,397
Puttalam Coal II	270	0	0	0
Puttalam Coal III	270	270	270	6,514
KPS Small GTs	54	16	0	0
KPS GT 7	115	115	21	2,490
KCCP	165	147	146	3,562
Sapugaskanda A	70	48	48	1,118
Sapugaskanda B	72	54	63	1,335
Uthura Janani	22	16	16	375
Barge CEB	62	60	60	1,436
CEB-Hambantota	30	15	13	316
CEB-Mathugama	20	12	11	235
ACE Matara	24	0	0	0
Asia Power	50	0	0	0
KCCPS -2	163	153	152	3,556
West Coast	270	0	0	0
Nothern Power	36	0	0	0
ACE Embilipitiya	93	0	0	0
Total	3,594	2,590	2,105	41,015

Note-

Plant availability is the availability recorded at 6 am on

April 24, 2024

Installed Capacity is sourced from CEB Annual Report- 2022

10. Contribution to the Night Peak in MW

April 23, 2024

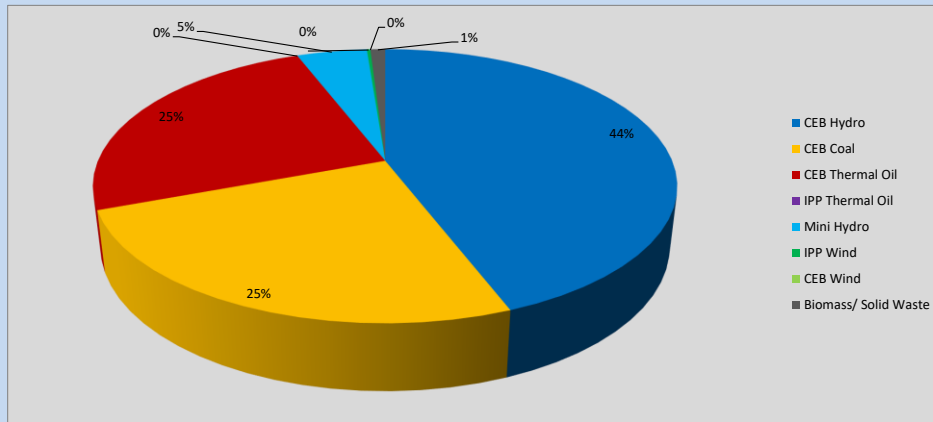


Table 06

CEB Hydro	943	MW
CEB Coal	538	MW
CEB Thermal Oil	530	MW
IPP Thermal Oil	0	MW
Mini Hydro (Telemetered)	99	MW
IPP Wind	5	MW
CEB Wind	0	MW
Biomass/ Solid Waste	21	MW

Recorded Peak Demand Data

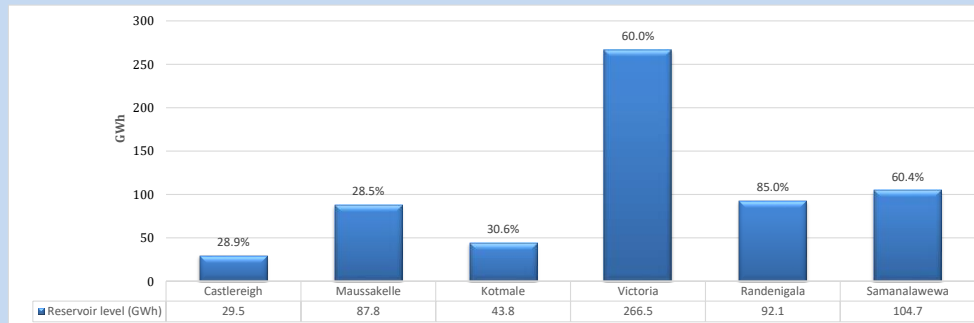
Table 07

Night Peak*	2,136	MW
Day Peak Maximum Demand	1,843	MW
Day Peak Minimum Demand	1,520	MW
Off Peak Minimum Demand	1,533	MW

Above figures are excluding contribution from roof top solar, non telemetered solar and mini hydro plants

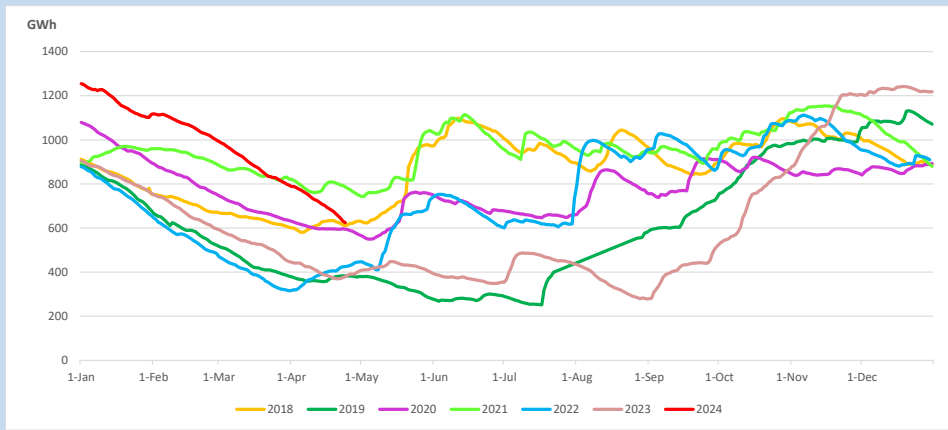
Reservoir Levels -

as at 06.00 Hr on April 24, 2024

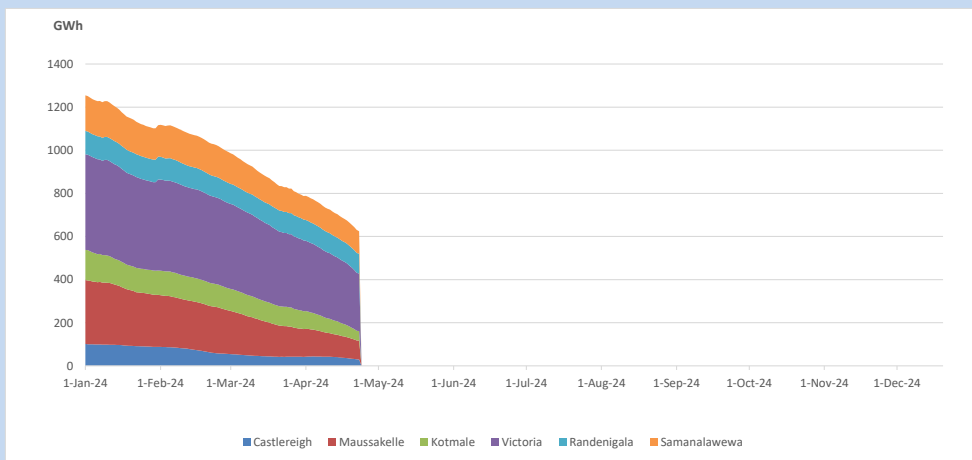


Total Reservoir Level 624.4 GWh
% of Total capacity 48.8%

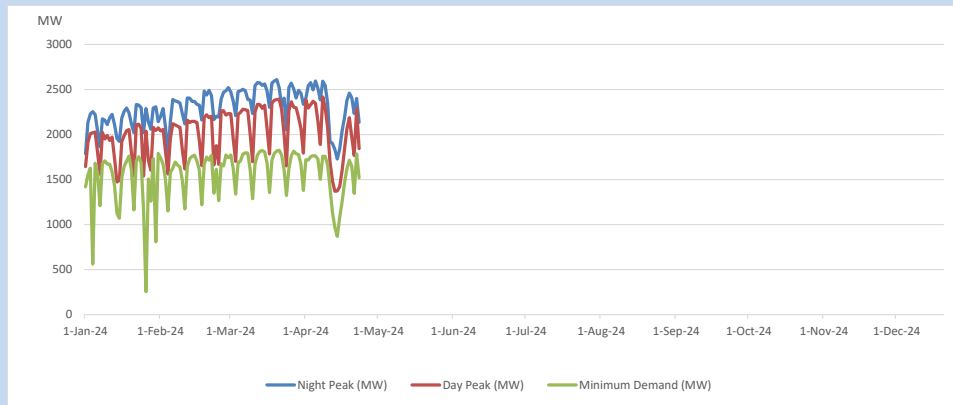
11. Comparison of Total Reservoir Storage Levels with Past Years



12. Variation of Major Hydro Reservoir Levels in the current year (GWh)



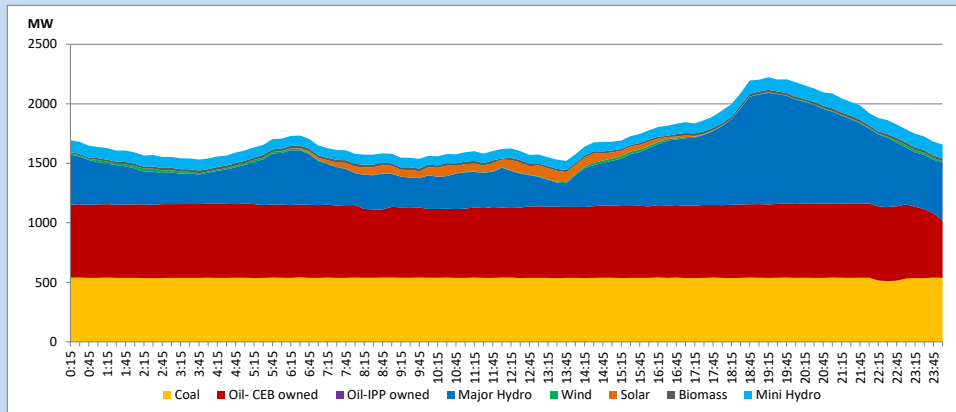
13. Variation of Demand during the current year



The above figures are excluding contribution from roof top solar, non telemetered solar and mini hydro plants

14. Daily Load Curve

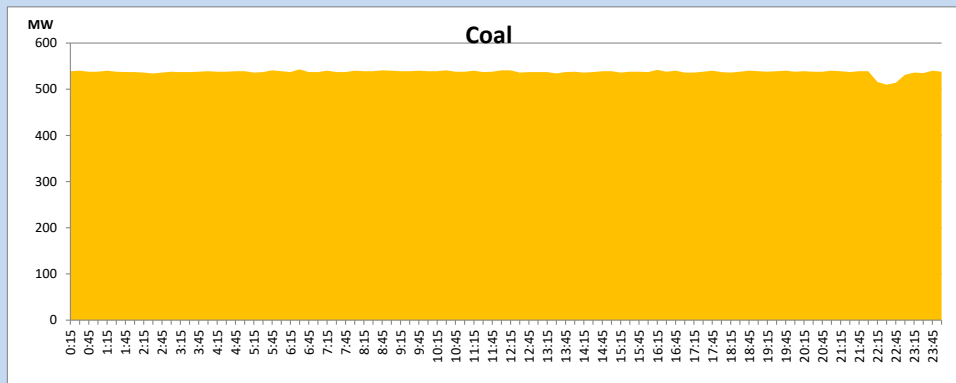
April 23, 2024



Solar and wind data is based on Telemetered Power Stations only

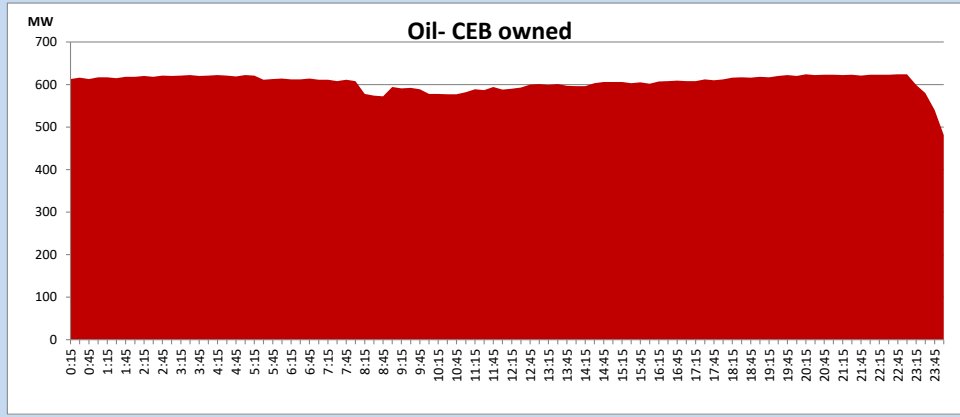
Coal Generation during

April 23, 2024



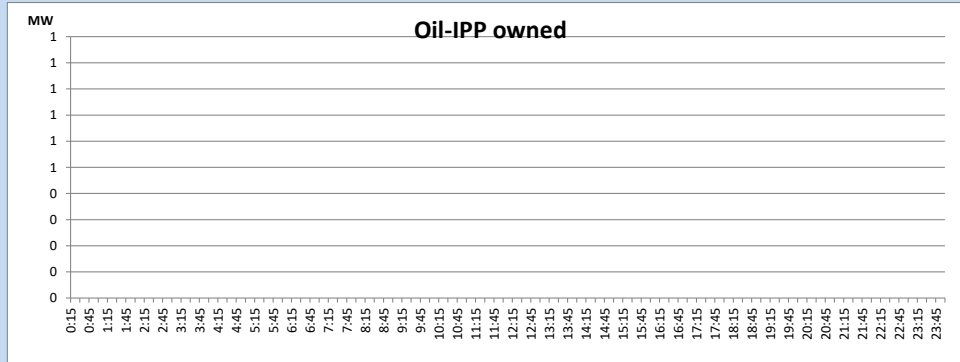
CEB Oil Plant Generation during

April 23, 2024



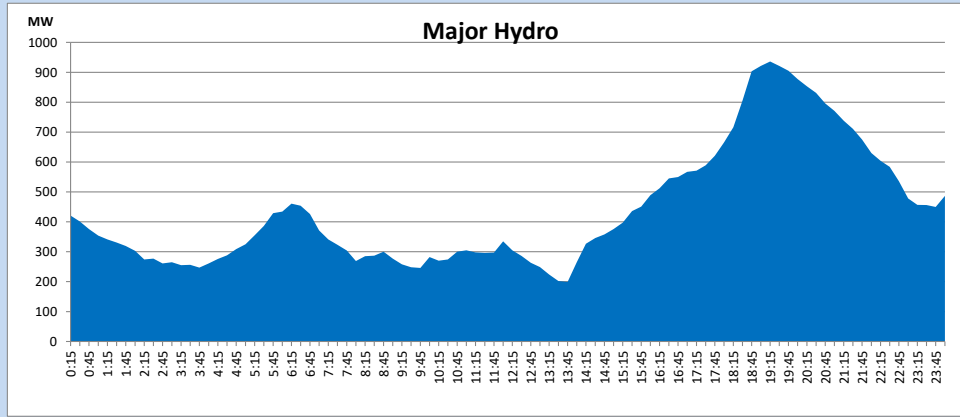
IPP Oil Plant Generation during

April 23, 2024



Major Hydro Generation during

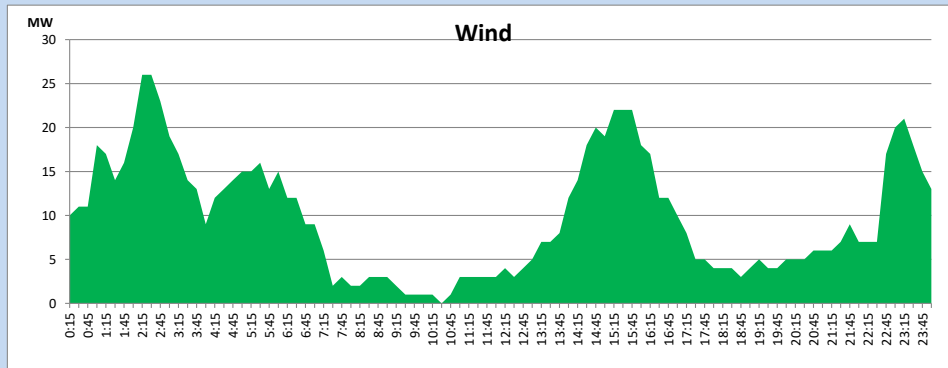
April 23, 2024



Wind Generation during

April 23, 2024

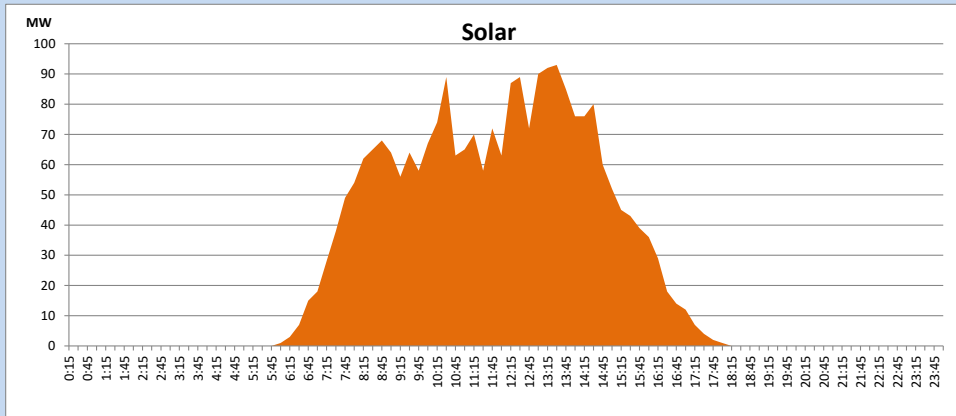
Based on Telemetered Power Stations only



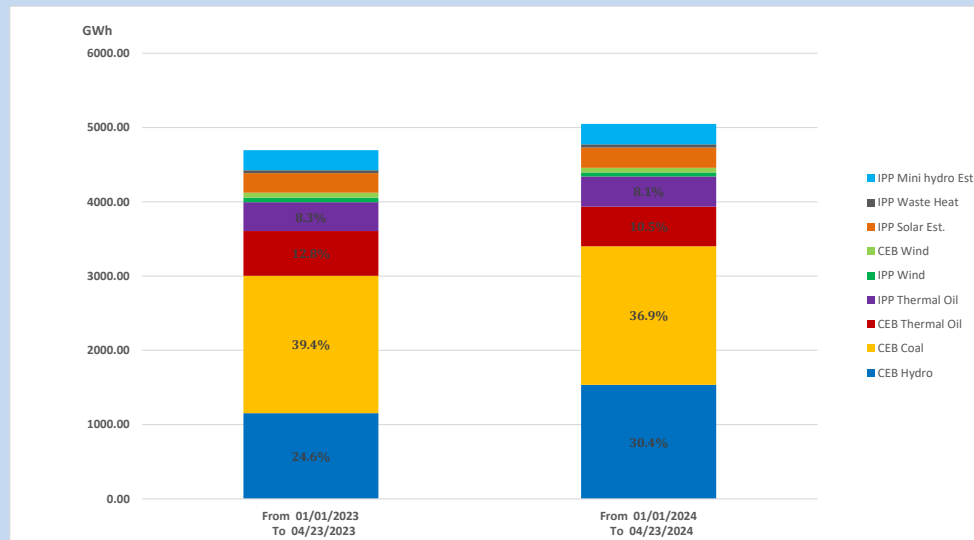
Solar Generation during

April 23, 2024

Based on Telemetered Power Stations only



15. Cumulative Dispatch Comparison with Last Year



Cumulative dispatch

From 01/01/2023 To 04/23/2023

4695 GWh

From 01/01/2024 To 04/23/2024

5048 GWh

The above figures are including contribution from roof top solar, non telemetered solar and mini hydro plants)

Unserviced energy due to power cuts has been excluded in 2023

Thermal Plant Fuel types

Table 08

Power Station	Primary Fuel
CEB Thermal	
Sapugaskanda 1	Heavy Fuel
Sapugaskanda 2	Heavy Fuel
Kelanitissa Small Gas Turbines	Auto Diesel
GT 7 - Kelanitissa	Auto Diesel
Kelanitissa CCY	Naphtha or Diesel
Lakvijaya 1	Coal
Lakvijaya 2	Coal
Lakvijaya 3	Coal
Uthuru Janani	Heavy Fuel
Barge CEB	Heavy Fuel
KCCPS -2	Auto Diesel

Power Station	Primary Fuel
Private Thermal	
West Coast	Auto Diesel / Heavy Fuel

Major Incidents reported during the day

April 23, 2024

- 1) Samanalawewa Unit 02 which was tripped on 18.04.2024, resumed generation at 20:29hrs.