

Generation and Reservoirs Statistics

April 16, 2024



PUBLIC UTILITIES COMMISSION OF SRI LANKA

1. Daily Generation Mix in MWh

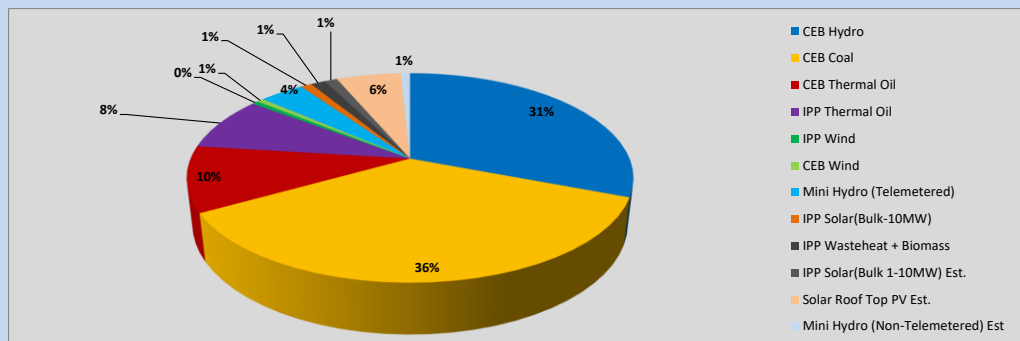


Table 01

	Generation (MWh)
CEB Hydro	11,503
CEB Coal	13,439
CEB Thermal Oil	3,786
IPP Thermal Oil	3,105
IPP Wind	202
CEB Wind	220
Mini Hydro (Telemetered)	1,437
IPP Solar (Bulk)	358
IPP Waste heat + Biomass	468
Total Generation (Excluding estimated figures)	34,518
* Estimated unserved energy	0
* Estimated Mini Hydro (Non telemetered)	306
* Estimated IPP Solar PV (Bulk 1-10MW)	414
* Estimated Solar Roof Top PV	2080
Total Generation (Including estimated figures)	37,318

* Estimated figures of CEB generation report

Table 02

	Installed Capacity (MW)
CEB Hydro	1644
CEB Coal	810
CEB Thermal Oil	773.1
IPP Thermal Oil (West Coast)	270
IPP Wind	163
CEB Wind	100
Mini Hydro	422
IPP Waste heat + Biomass	54
IPP Solar	137
Rooftop Solar (Ordinary)	293
Rooftop Solar (LT Bulk)	272
Rooftop Solar (HT Bulk)	74

Data Source - Monthly Review Report [Nov-2023]

2. Cumulative Dispatch

Following data excludes the contribution from roof top solar, non telemetered solar and mini hydro plants

Table 03 - Current Month

Category	Dispatch (GWh)	
CEB Hydro	178	25.25%
CEB Coal	271	38.46%
CEB Thermal Oil	91	12.95%
IPP Thermal	76	10.85%
SPP Wind	5	0.67%
CEB Wind	5	0.66%
Mini Hydro *	28	3.92%
IPP Solar *	45	6.39%
IPP Waste heat + BMP	6	0.86%
Total	703	

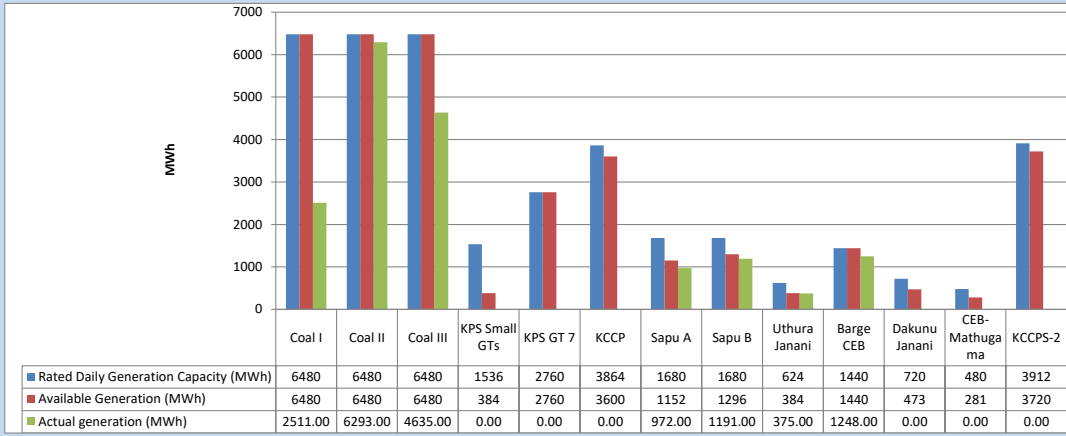
Table 04 - Current Year

Category	Dispatch (GWh)	
CEB Hydro	1,441	30.44%
CEB Coal	1,747	36.91%
CEB Thermal Oil	470	9.94%
IPP Thermal	408	8.61%
SPP Wind	51	1.08%
CEB Wind	60	1.26%
Mini Hydro *	263	5.55%
IPP Solar *	254	5.37%
IPP Waste heat	39	0.83%
Total	4,733	

*Including estimated contribution from non telemetered plants

3. CEB owned Thermal Plant Dispatch

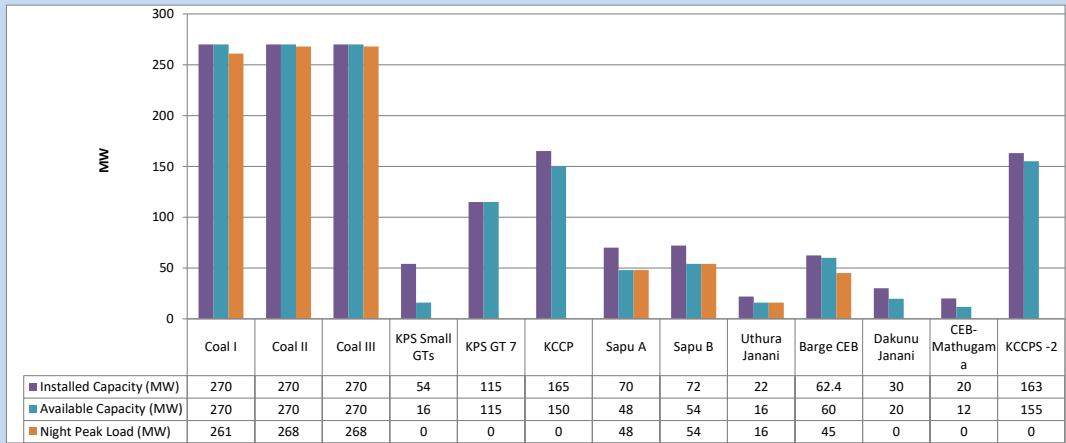
April 16, 2024



Available Generation is estimated based on plant availability at 6.00am on

April 17, 2024

4. CEB owned Thermal Plant Loading at the Night Peak

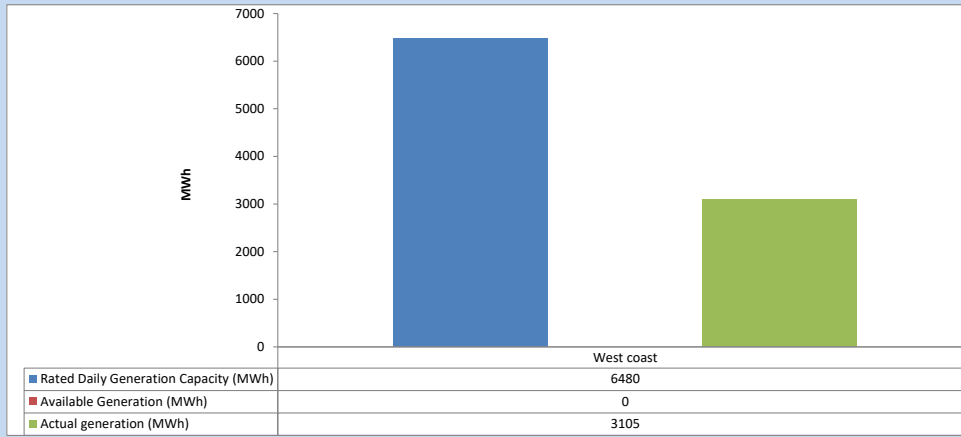


Plant availability is recorded at 6.00 am on

April 17, 2024

5. IPP owned Thermal Plant Dispatch

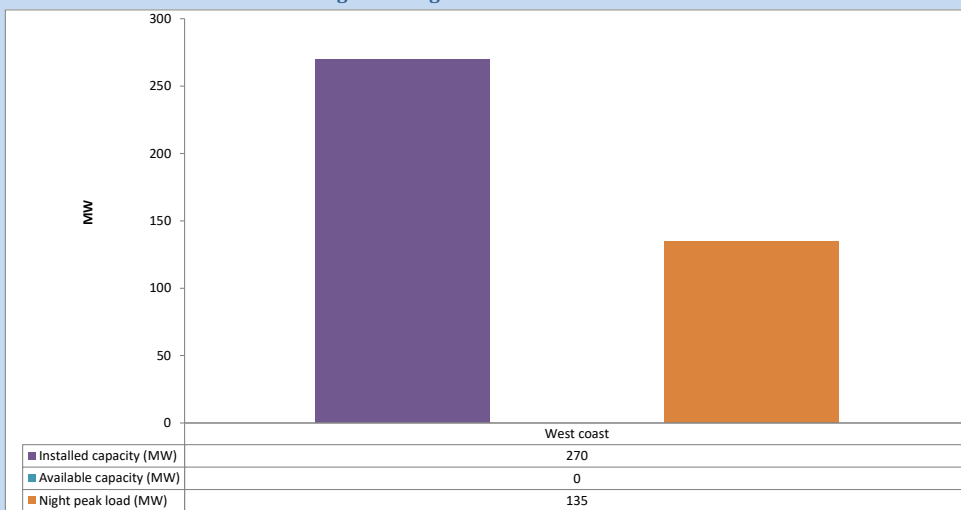
April 16, 2024



Available Generation is estimated based on plant availability at 6.00am on

April 17, 2024

6. IPP owned Thermal Plant Loading at the Night Peak

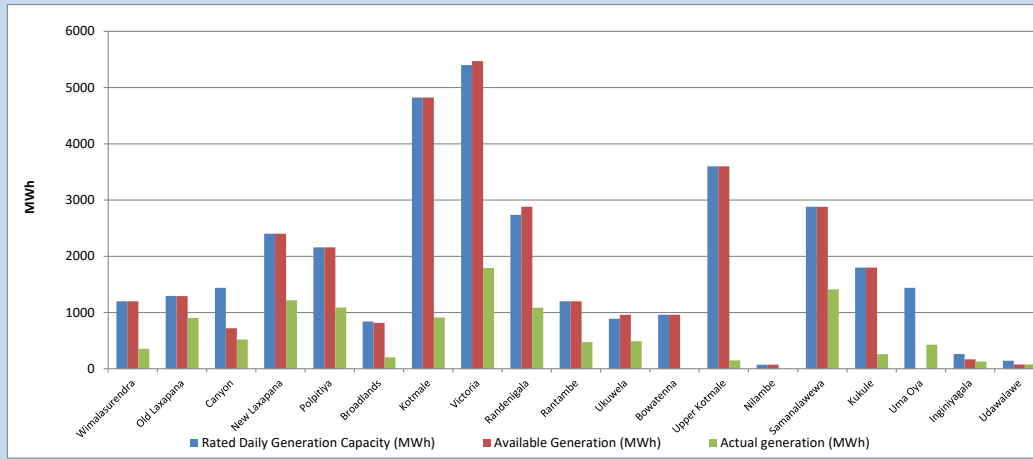


Plant availability is recorded at 6.00 am on

April 17, 2024

7. Major Hydro Plant Dispatch

April 16, 2024

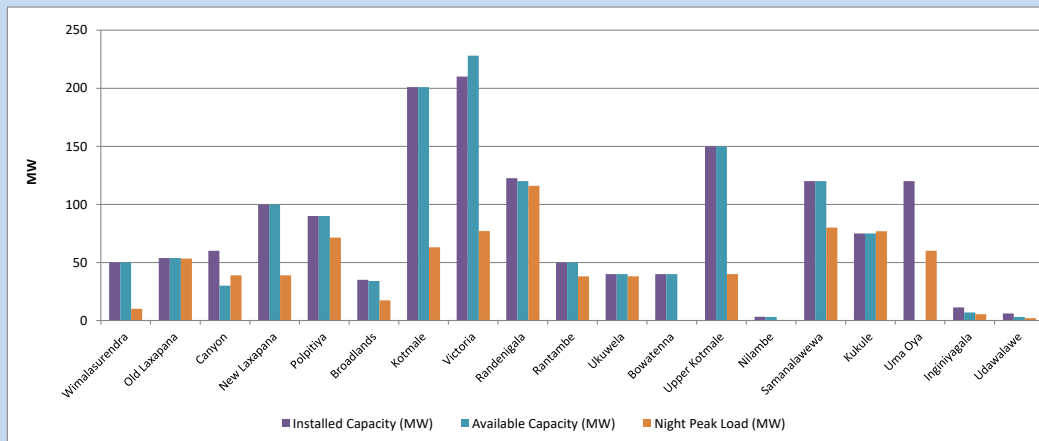


Available Generation is estimated based on plant availability at 6.00am on
Broadlands power plant is operating in the Commissioning Stage

April 17, 2024

8. Major Hydro Plant Loading at Night Peak

April 16, 2024



Plant availability is recorded at 6.00 am on
Broadlands power plant is operating in the Commissioning Stage

April 17, 2024

9. Summary of Major Plant performance

Table 05

Plant	Maximum Available Total Capacity	Plant Availability	Night peak Load	Plant Dispatch
	(MW)	(MW)	(MW)	(MWh)
Wimalasurendra	50	50	10	356
Old Laxapana	54	54	53	904
Canyon	60	30	39	520
New Laxapana	100	100	39	1,219
Polpitiya	90	90	71	1,090
Broadlands	35	34	17	203
Kotmale	201	201	63	910
Victoria	210	228	77	1,792
Randenigala	123	120	116	1,087
Rantambe	50	50	38	474
Ukuwela	40	40	38	491
Bowatenna	40	40	0	0
Upper Kotmale	150	150	40	150
Nilambe	3	3	0	0
Samanalawewa	120	120	80	1,412
Kukule	75	75	77	260
Uma Oya (Testing)	120	0	60	428
Inginiyagala	11	7	5	128
Udawalawe	6	3	2	79
Puttalam Coal I	270	270	261	2,511
Puttalam Coal II	270	270	268	6,293
Puttalam Coal III	270	270	268	4,635
KPS Small GTs	54	16	0	0
KPS GT 7	115	115	0	0
KCCP	165	150	0	0
Sapugaskanda A	70	48	48	972
Sapugaskanda B	72	54	54	1,191
Uthura Janani	22	16	16	375
Barge CEB	62	60	45	1,248
CEB-Hambantota	30	20	0	0
CEB-Mathugama	20	12	0	0
ACE Matara	24	0	0	0
Asia Power	50	0	0	0
KCCPS -2	163	155	0	0
West Coast	270	0	135	3,105
Nothern Power	36	0	0	0
ACE Embilipitiya	93	0	0	0
Total	3,594	2,850	2,028	34,518

Note-

Plant availability is the availability recorded at 6 am on

April 17, 2024

Installed Capacity is sourced from CEB Annual Report- 2022

10. Contribution to the Night Peak in MW

April 16, 2024

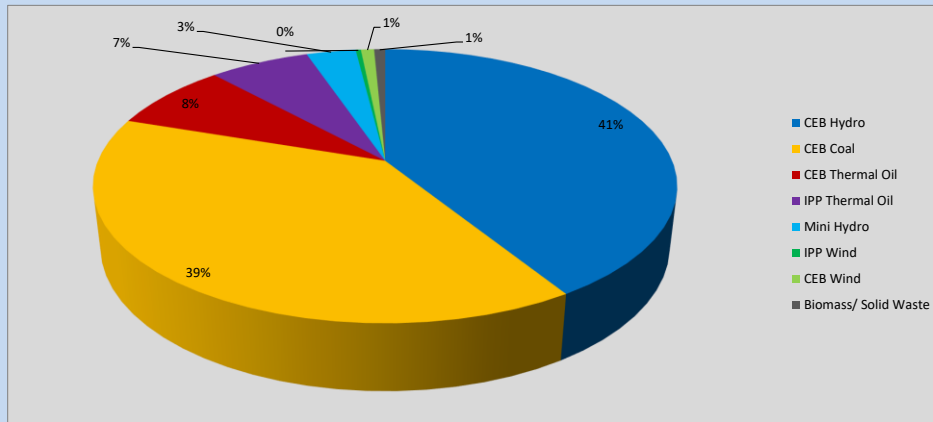


Table 06

CEB Hydro	838	MW
CEB Coal	797	MW
CEB Thermal Oil	163	MW
IPP Thermal Oil	135	MW
Mini Hydro (Telemetered)	67	MW
IPP Wind	7	MW
CEB Wind	17.8	MW
Biomass/ Solid Waste	15	MW

Recorded Peak Demand Data

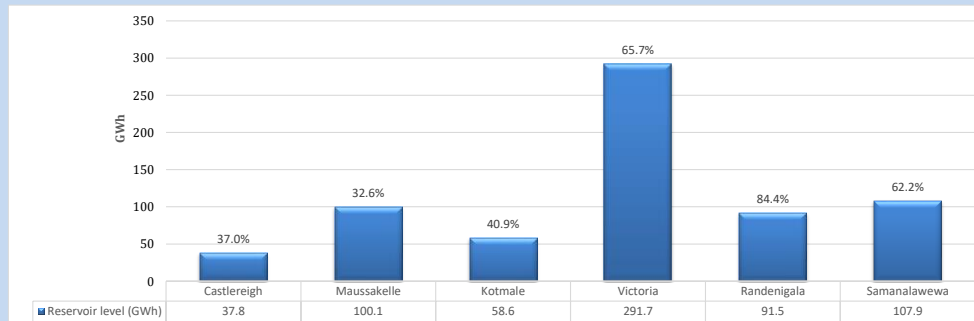
Table 07

Night Peak*	2,040	MW
Day Peak Maximum Demand	1,601	MW
Day Peak Minimum Demand	1,255	MW
Off Peak Minimum Demand	1,150	MW

Above figures are excluding contribution from roof top solar, non telemetered solar and mini hydro plants

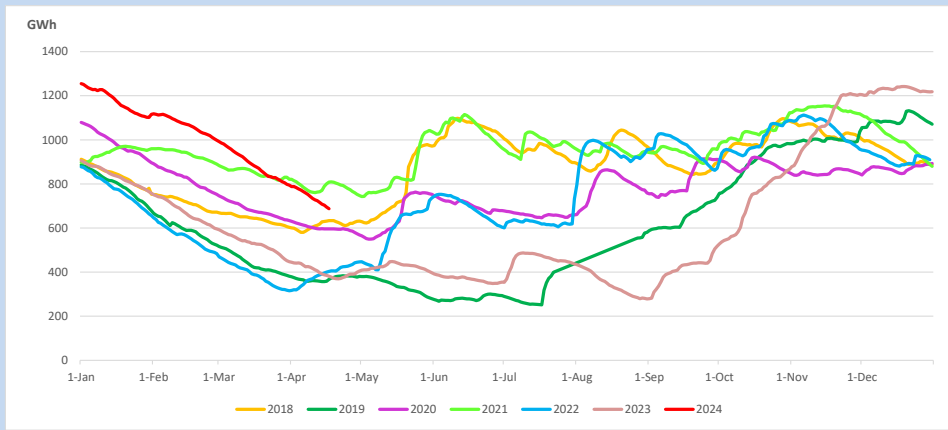
Reservoir Levels -

as at 06.00 Hr on April 17, 2024

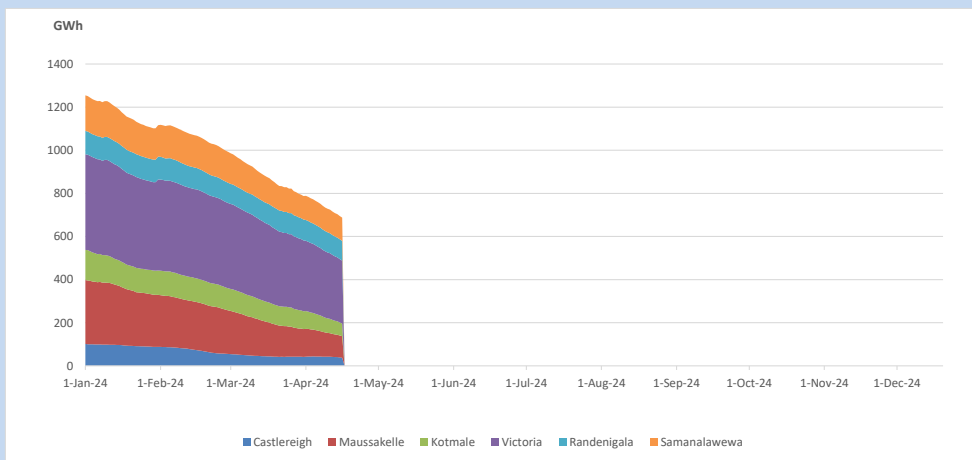


Total Reservoir Level 687.6 GWh
% of Total capacity 53.8%

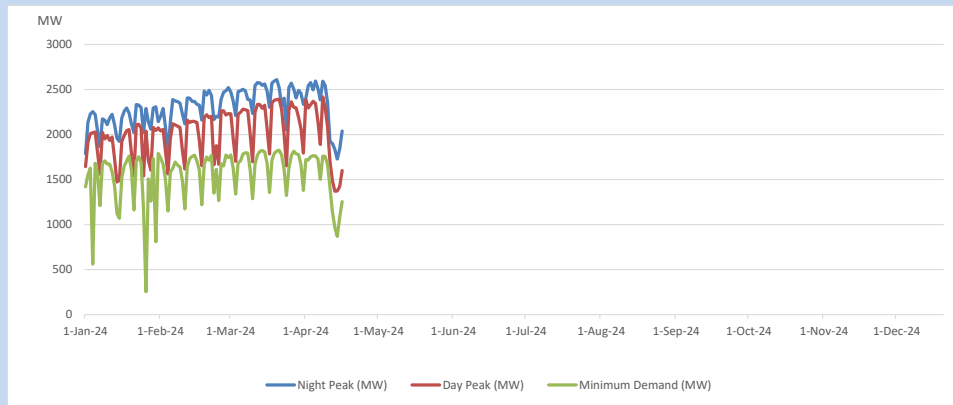
11. Comparison of Total Reservoir Storage Levels with Past Years



12. Variation of Major Hydro Reservoir Levels in the current year (GWh)



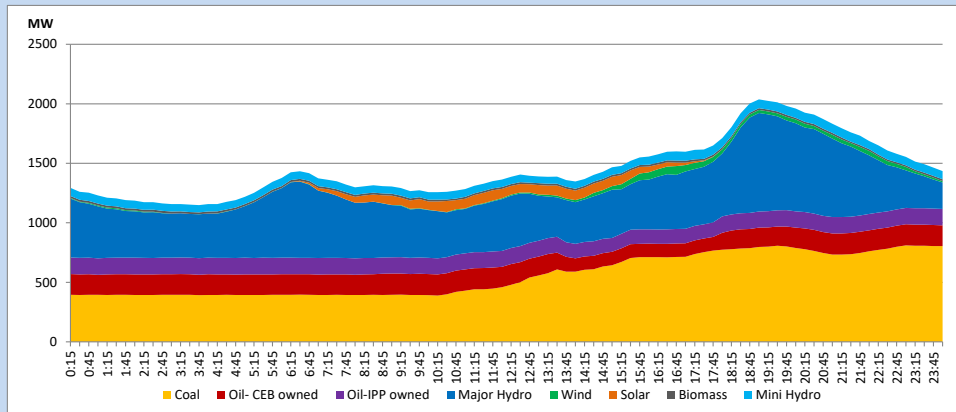
13. Variation of Demand during the current year



The above figures are excluding contribution from roof top solar, non telemetered solar and mini hydro plants

14. Daily Load Curve

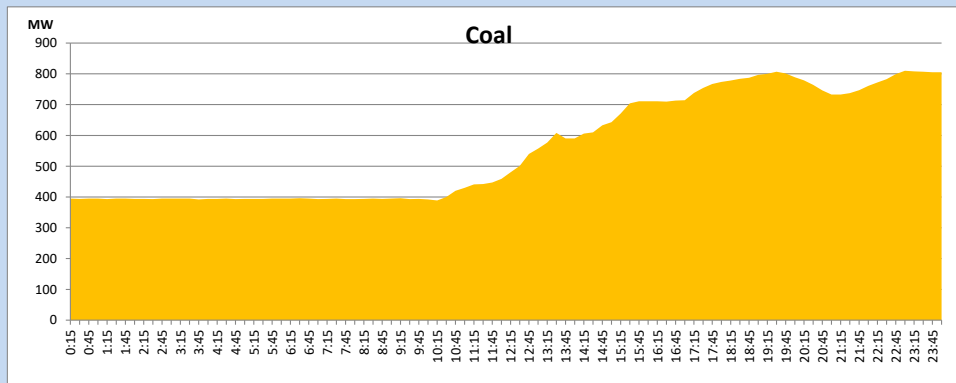
April 16, 2024



Solar and wind data is based on Telemetered Power Stations only

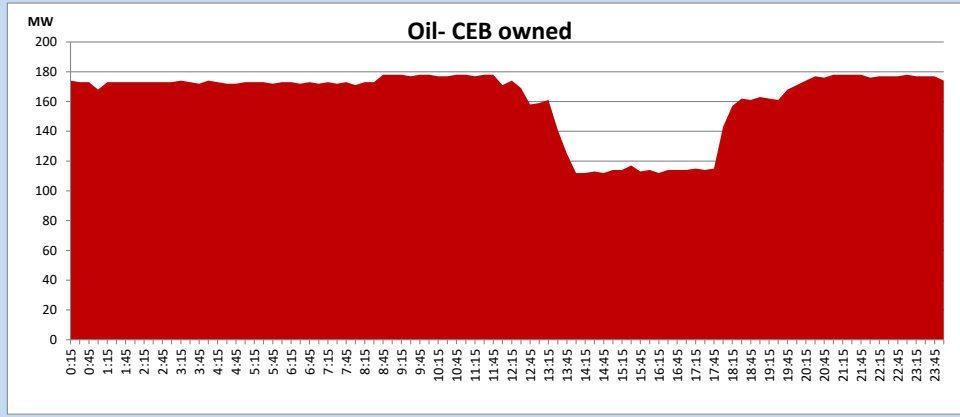
Coal Generation during

April 16, 2024



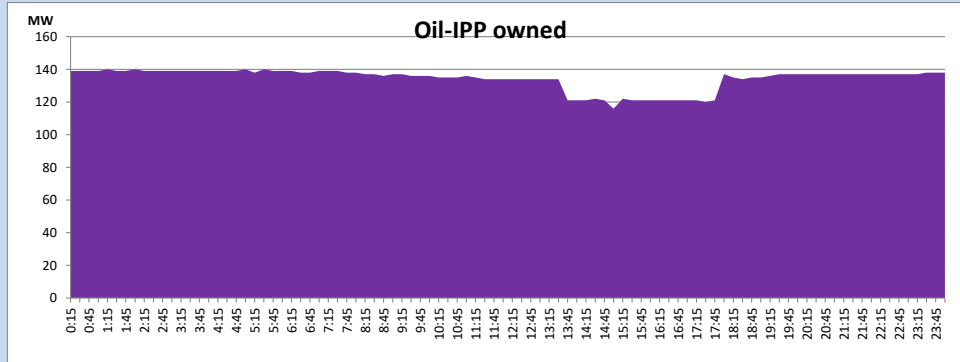
CEB Oil Plant Generation during

April 16, 2024



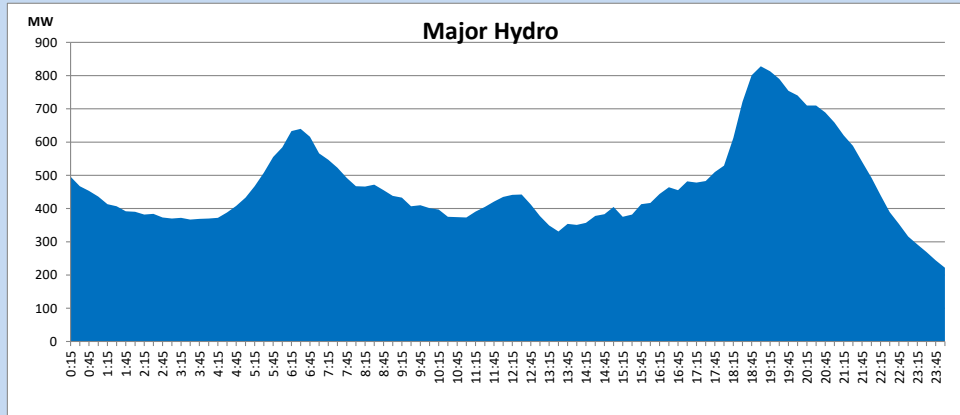
IPP Oil Plant Generation during

April 16, 2024



Major Hydro Generation during

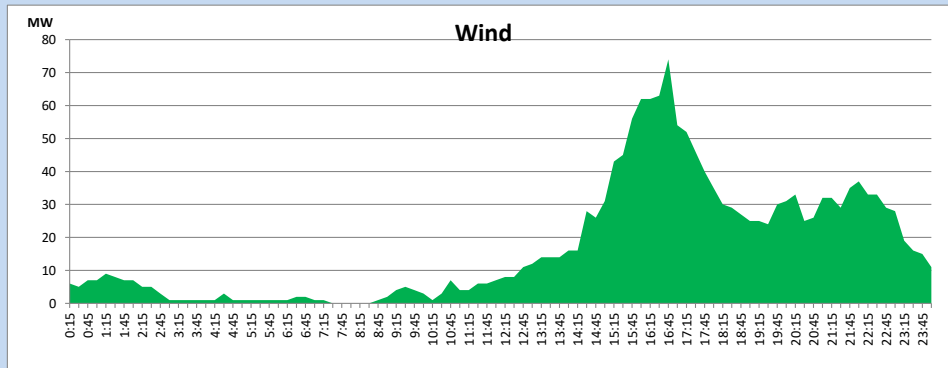
April 16, 2024



Wind Generation during

April 16, 2024

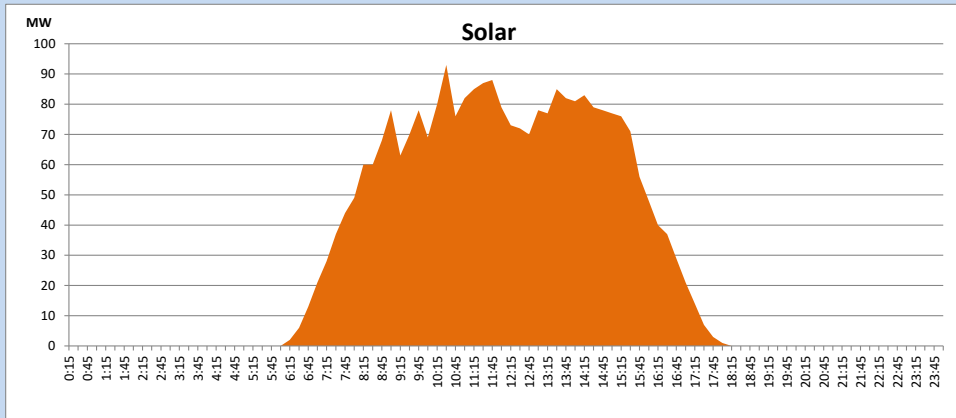
Based on Telemetered Power Stations only



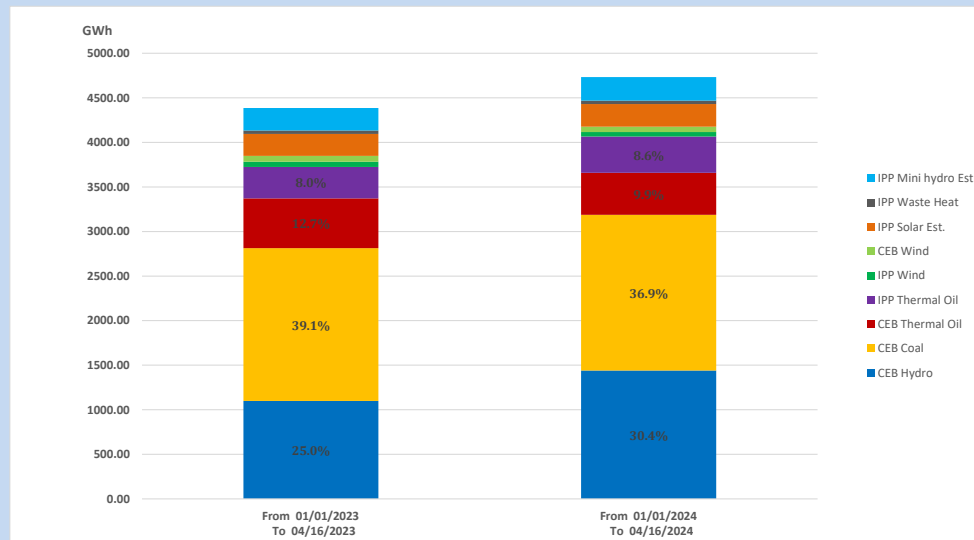
Solar Generation during

April 16, 2024

Based on Telemetered Power Stations only



15. Cumulative Dispatch Comparison with Last Year



Cumulative dispatch
 From 01/01/2023 To 04/16/2023
 From 01/01/2024 To 04/16/2024

4386 GWh
 4733 GWh

The above figures are including contribution from roof top solar, non telemetered solar and mini hydro plants)
 Unused energy due to power cuts has been excluded in 2023

Thermal Plant Fuel types

Table 08

Power Station	Primary Fuel
CEB Thermal	
Sapugaskanda 1	Heavy Fuel
Sapugaskanda 2	Heavy Fuel
Kelanitissa Small Gas Turbines	Auto Diesel
GT 7 - Kelanitissa	Auto Diesel
Kelanitissa CCY	Naphtha or Diesel
Lakvijaya 1	Coal
Lakvijaya 2	Coal
Lakvijaya 3	Coal
Uthuru Janani	Heavy Fuel
Barge CEB	Heavy Fuel
KCCPS -2	Auto Diesel

Power Station	Primary Fuel
Private Thermal	
West Coast	Auto Diesel / Heavy Fuel

Major Incidents reported during the day

April 16, 2024

- 1) LVPS unit 01 synchronized at 12:05hrs and reached full load by 19:15hrs.
- 2) Broadlands - Seethawaka cct which tripped on 15.04.2024 was normalized at 17:27hrs.
- 3) LVPS unit 03 reached full load by 17:30hrs.
- 4) New Chilaw – Puttalam cct 02 tripped & A/R from Puttalam end at 05:38hrs.(17.04.2024). (The cct was in OFF status at New Chilaw end.)