

Generation and Reservoirs Statistics

April 15, 2024



PUBLIC UTILITIES COMMISSION OF SRI LANKA

1. Daily Generation Mix in MWh

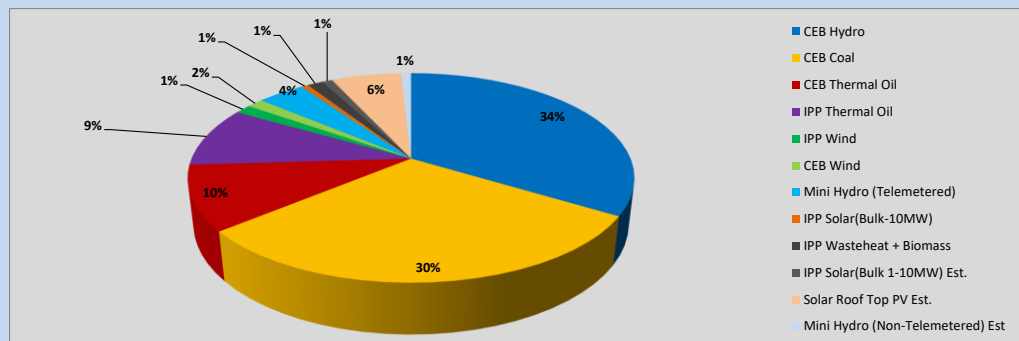


Table 01

	Generation (MWh)
CEB Hydro	11,555
CEB Coal	10,439
CEB Thermal Oil	3,449
IPP Thermal Oil	3,182
IPP Wind	484
CEB Wind	485
Mini Hydro (Telemetered)	1,408
IPP Solar (Bulk)	213
IPP Waste heat + Biomass	460
Total Generation (Excluding estimated figures)	31,675
* Estimated unserved energy	0
* Estimated Mini Hydro (Non telemetered)	300
* Estimated IPP Solar PV (Bulk 1-10MW)	304
* Estimated Solar Roof Top PV	2080
Total Generation (Including estimated figures)	34,359

* Estimated figures of CEB generation report

Table 02

	Installed Capacity (MW)
CEB Hydro	1644
CEB Coal	810
CEB Thermal Oil	773.1
IPP Thermal Oil (West Coast)	270
IPP Wind	163
CEB Wind	100
Mini Hydro	422
IPP Waste heat + Biomass	54
IPP Solar	137
Rooftop Solar (Ordinary)	293
Rooftop Solar (LT Bulk)	272
Rooftop Solar (HT Bulk)	74

Data Source - Monthly Review Report [Nov-2023]

2. Cumulative Dispatch

Following data excludes the contribution from roof top solar, non telemetered solar and mini hydro plants

Table 03 - Current Month

Category	Dispatch (GWh)	
CEB Hydro	166	24.94%
CEB Coal	257	38.60%
CEB Thermal Oil	87	13.11%
IPP Thermal	73	11.00%
SPP Wind	5	0.68%
CEB Wind	4	0.66%
Mini Hydro *	26	3.87%
IPP Solar *	42	6.32%
IPP Waste heat + BMP	6	0.83%
Total	666	

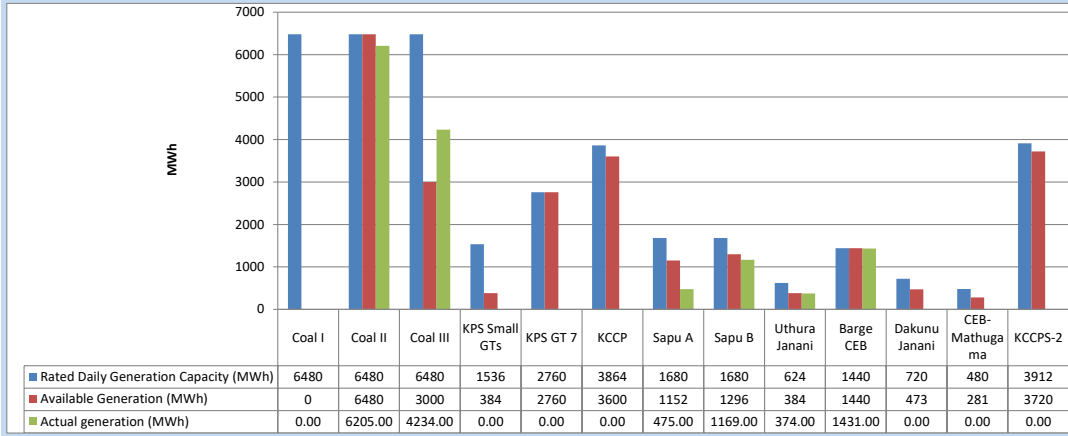
Table 04 - Current Year

Category	Dispatch (GWh)	
CEB Hydro	1,429	30.44%
CEB Coal	1,734	36.92%
CEB Thermal Oil	466	9.93%
IPP Thermal	405	8.62%
SPP Wind	51	1.08%
CEB Wind	60	1.27%
Mini Hydro *	261	5.56%
IPP Solar *	251	5.35%
IPP Waste heat	39	0.83%
Total	4,695	

*Including estimated contribution from non telemetered plants

3. CEB owned Thermal Plant Dispatch

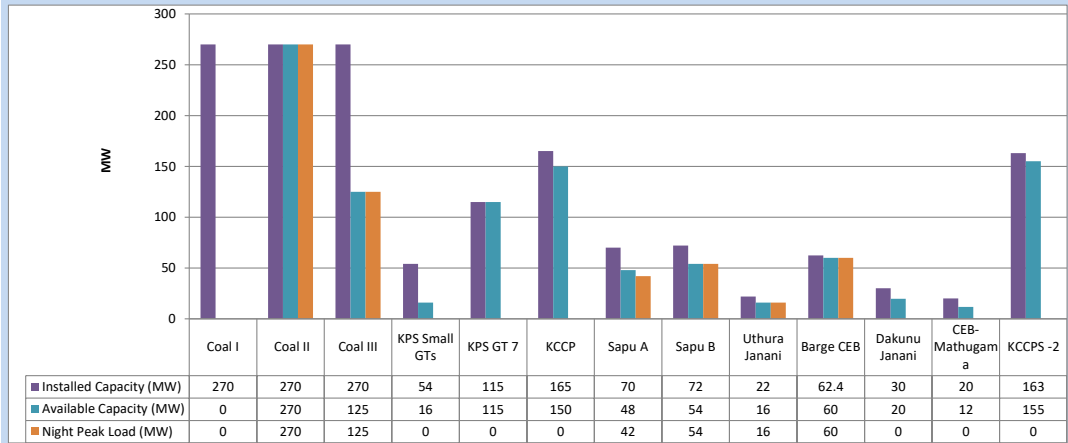
April 15, 2024



Available Generation is estimated based on plant availability at 6.00am on

April 16, 2024

4. CEB owned Thermal Plant Loading at the Night Peak

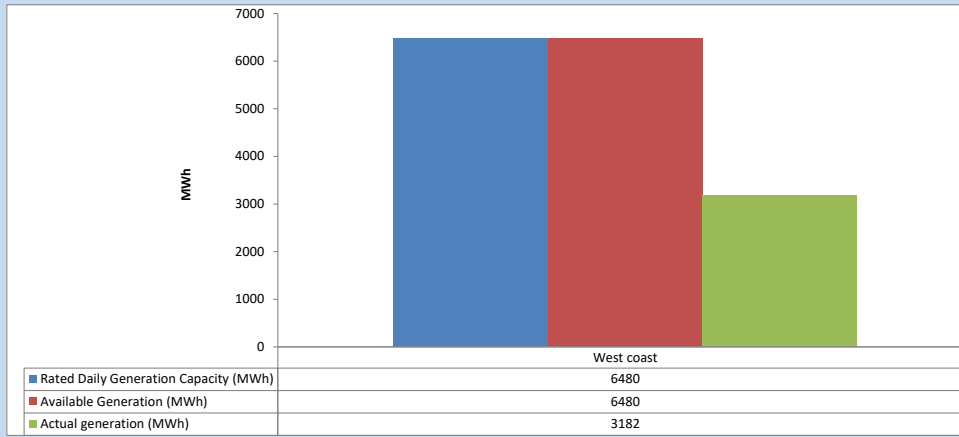


Plant availability is recorded at 6.00 am on

April 16, 2024

5. IPP owned Thermal Plant Dispatch

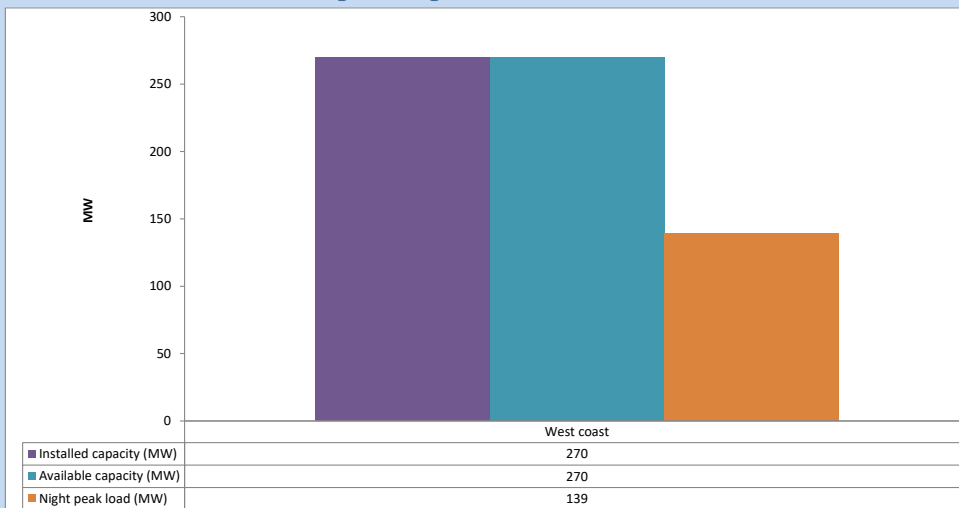
April 15, 2024



Available Generation is estimated based on plant availability at 6.00am on

April 16, 2024

6. IPP owned Thermal Plant Loading at the Night Peak

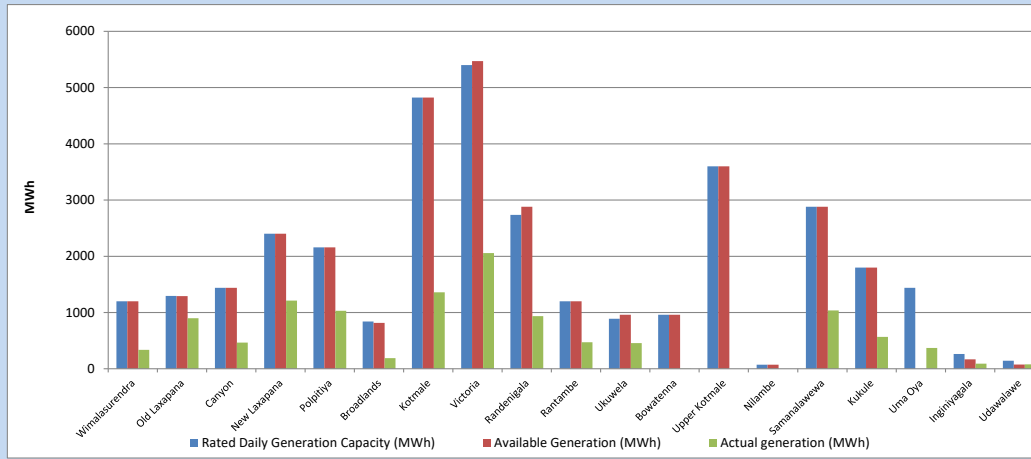


Plant availability is recorded at 6.00 am on

April 16, 2024

7. Major Hydro Plant Dispatch

April 15, 2024

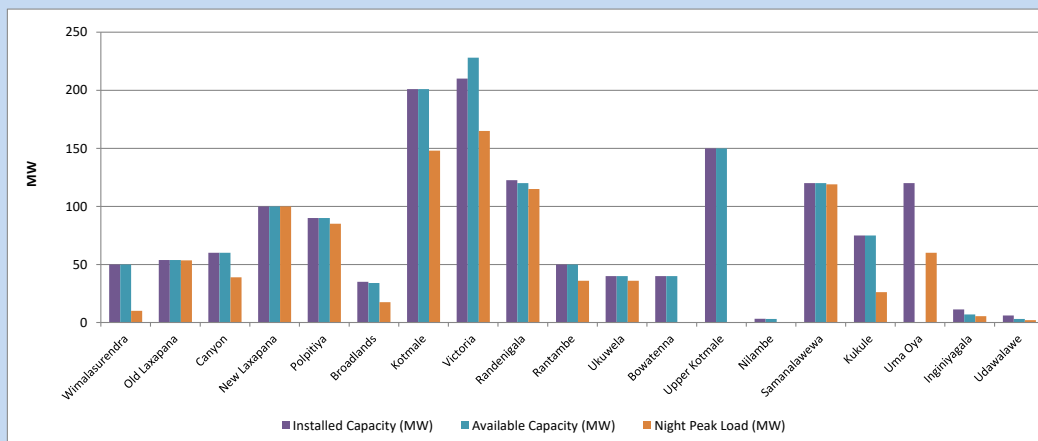


Available Generation is estimated based on plant availability at 6.00am on
Broadlands power plant is operating in the Commissioning Stage

April 16, 2024

8. Major Hydro Plant Loading at Night Peak

April 15, 2024



Plant availability is recorded at 6.00 am on
Broadlands power plant is operating in the Commissioning Stage

April 16, 2024

9. Summary of Major Plant performance

Table 05

Plant	Maximum Available Total Capacity	Plant Availability	Night peak Load	Plant Dispatch
	(MW)	(MW)	(MW)	(MWh)
Wimalasurendra	50	50	10	337
Old Laxapana	54	54	54	900
Canyon	60	60	39	464
New Laxapana	100	100	100	1,211
Polpitiya	90	90	85	1,030
Broadlands	35	34	18	190
Kotmale	201	201	148	1,360
Victoria	210	228	165	2,056
Randenigala	123	120	115	936
Rantambe	50	50	36	472
Ukuwela	40	40	36	456
Bowatenna	40	40	0	3
Upper Kotmale	150	150	0	0
Nilambe	3	3	0	0
Samanalawewa	120	120	119	1,036
Kukule	75	75	26	566
Uma Oya (Testing)	120	0	60	371
Inginiyagala	11	7	5	90
Udawalawe	6	3	2	77
Puttalam Coal I	270	0	0	0
Puttalam Coal II	270	270	270	6,205
Puttalam Coal III	270	125	125	4,234
KPS Small GTs	54	16	0	0
KPS GT 7	115	115	0	0
KCCP	165	150	0	0
Sapugaskanda A	70	48	42	475
Sapugaskanda B	72	54	54	1,169
Uthura Janani	22	16	16	374
Barge CEB	62	60	60	1,431
CEB-Hambantota	30	20	0	0
CEB-Mathugama	20	12	0	0
ACE Matara	24	0	0	0
Asia Power	50	0	0	0
KCCPS -2	163	155	0	0
West Coast	270	270	139	3,182
Nothern Power	36	0	0	0
ACE Embilipitiya	93	0	0	0
Total	3,594	2,735	1,824	31,675

Note-

Plant availability is the availability recorded at 6 am on

April 16, 2024

Installed Capacity is sourced from CEB Annual Report- 2022

10. Contribution to the Night Peak in MW

April 15, 2024

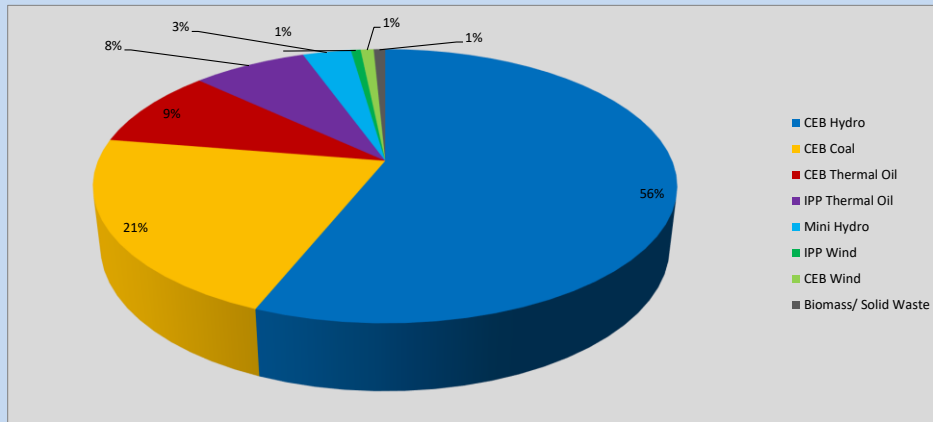


Table 06

CEB Hydro	1031	MW
CEB Coal	395	MW
CEB Thermal Oil	172	MW
IPP Thermal Oil	139	MW
Mini Hydro (Telemetered)	59	MW
IPP Wind	11.8	MW
CEB Wind	15.9	MW
Biomass/ Solid Waste	14	MW

Recorded Peak Demand Data

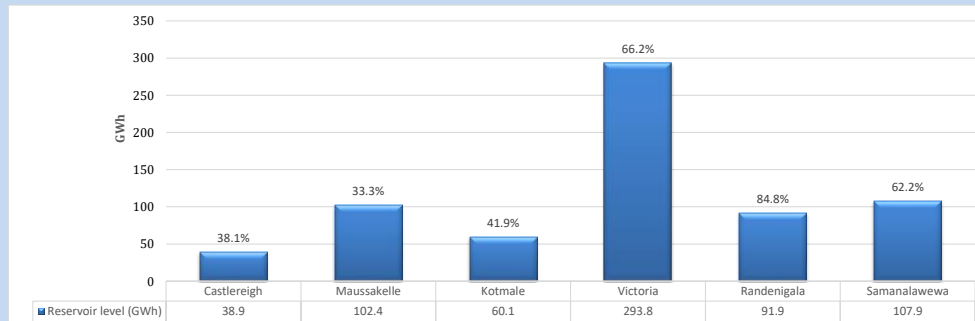
Table 07

Night Peak*	1,837	MW
Day Peak Maximum Demand	1,422	MW
Day Peak Minimum Demand	1,079	MW
Off Peak Minimum Demand	1,126	MW

Above figures are excluding contribution from roof top solar, non telemetered solar and mini hydro plants

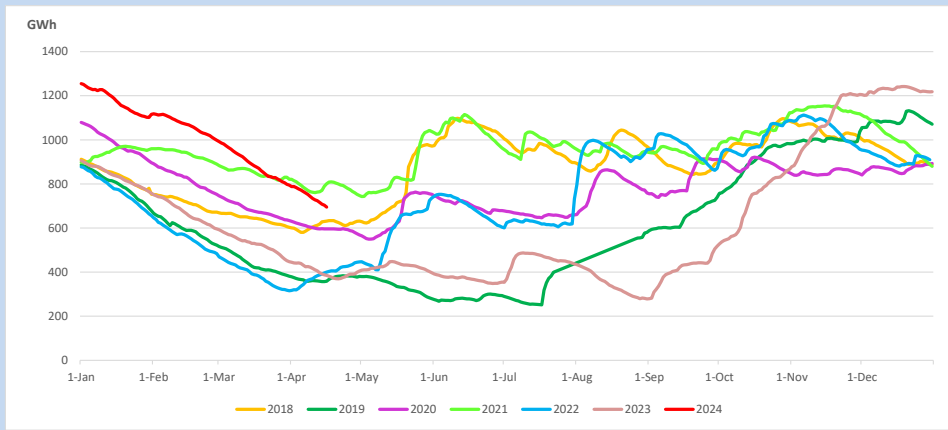
Reservoir Levels -

as at 06.00 Hr on April 16, 2024

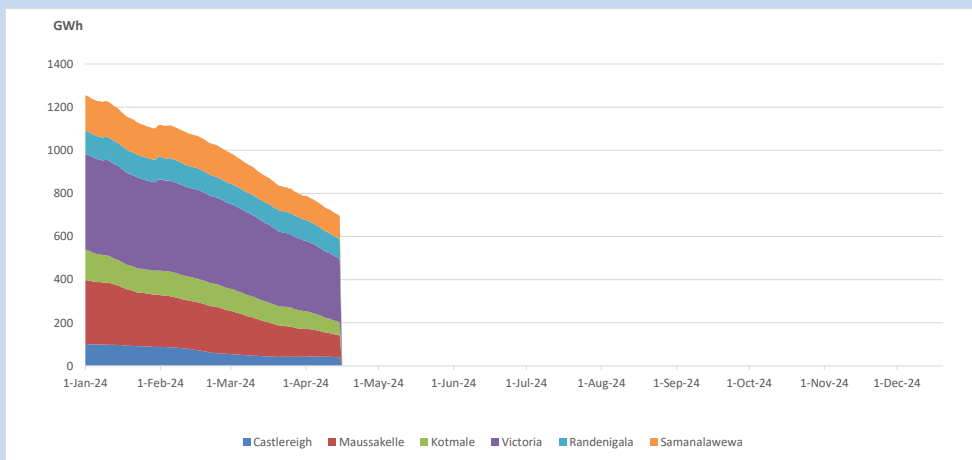


Total Reservoir Level 695 GWh
% of Total capacity 54.4%

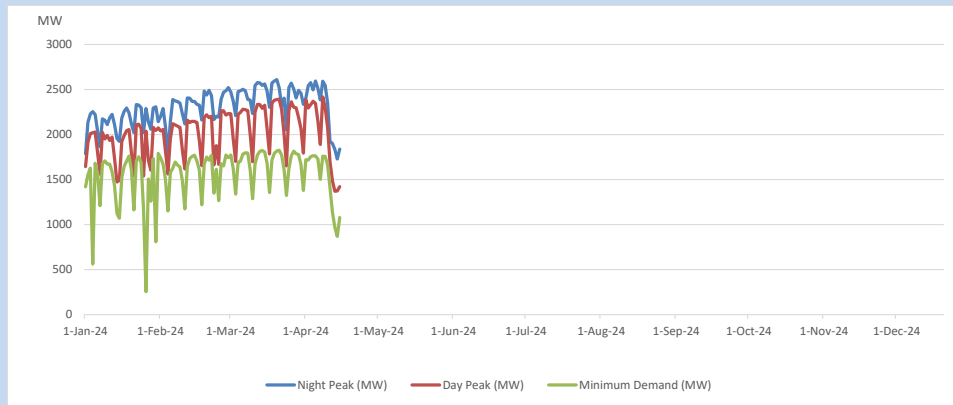
11. Comparison of Total Reservoir Storage Levels with Past Years



12. Variation of Major Hydro Reservoir Levels in the current year (GWh)



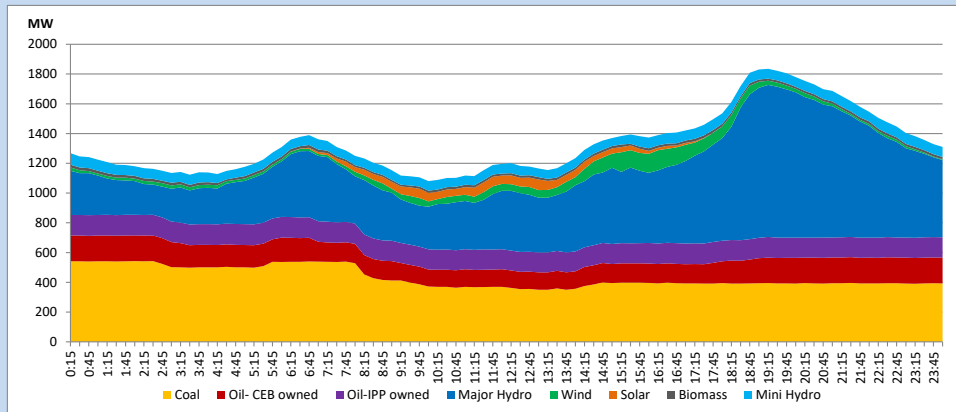
13. Variation of Demand during the current year



The above figures are excluding contribution from roof top solar, non telemetered solar and mini hydro plants

14. Daily Load Curve

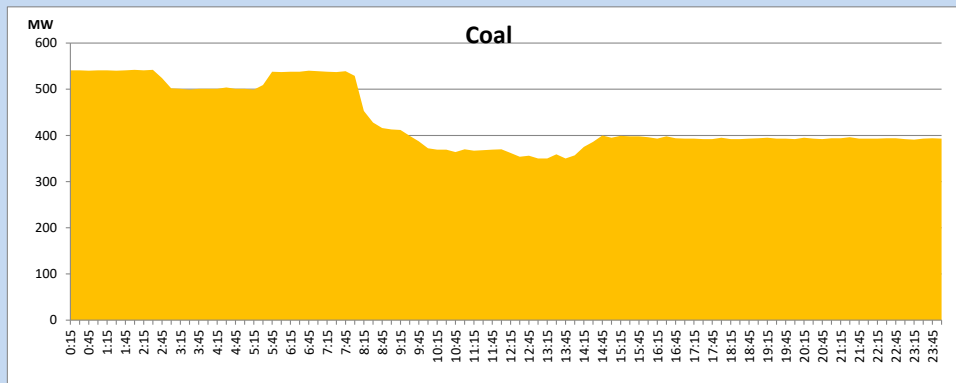
April 15, 2024



Solar and wind data is based on Telemetered Power Stations only

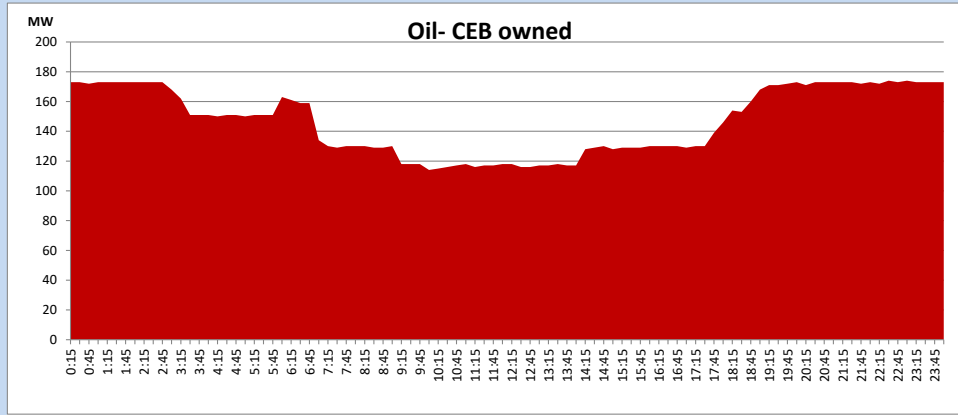
Coal Generation during

April 15, 2024



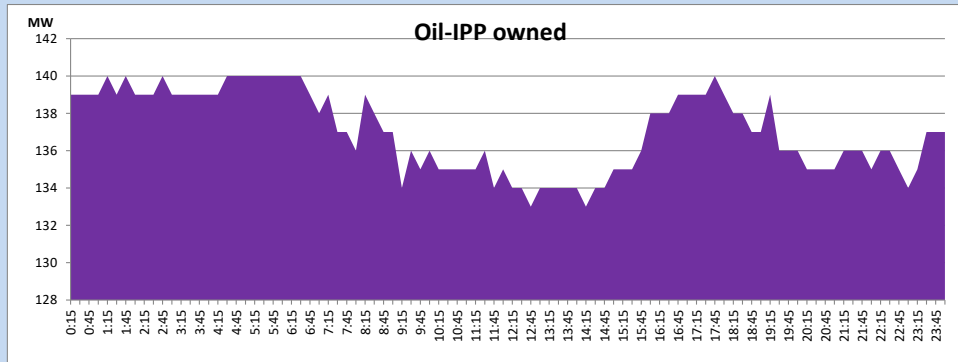
CEB Oil Plant Generation during

April 15, 2024



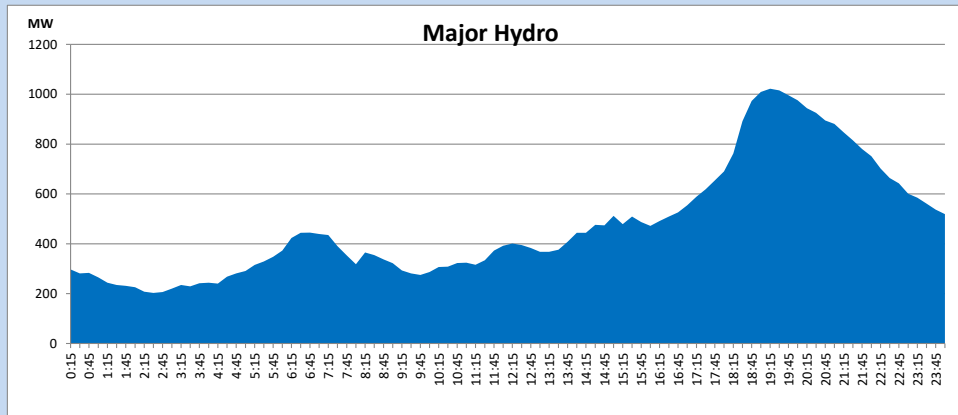
IPP Oil Plant Generation during

April 15, 2024



Major Hydro Generation during

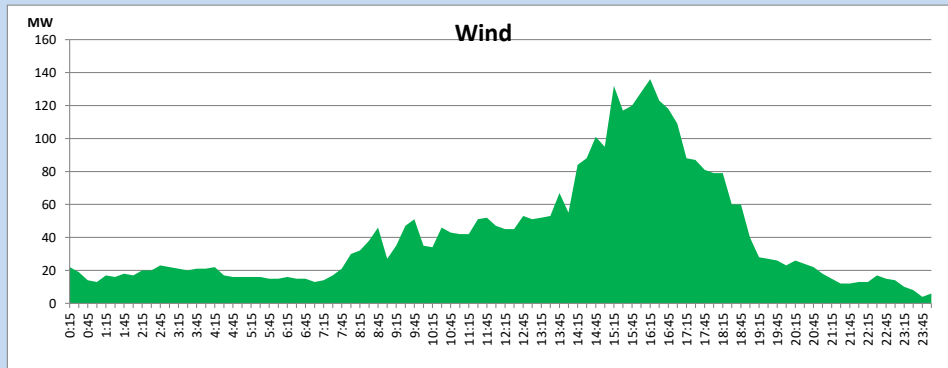
April 15, 2024



Wind Generation during

April 15, 2024

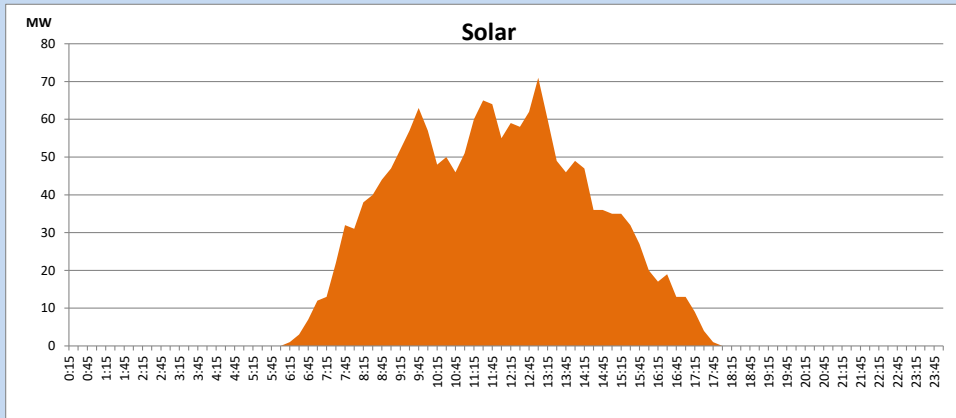
Based on Telemetered Power Stations only



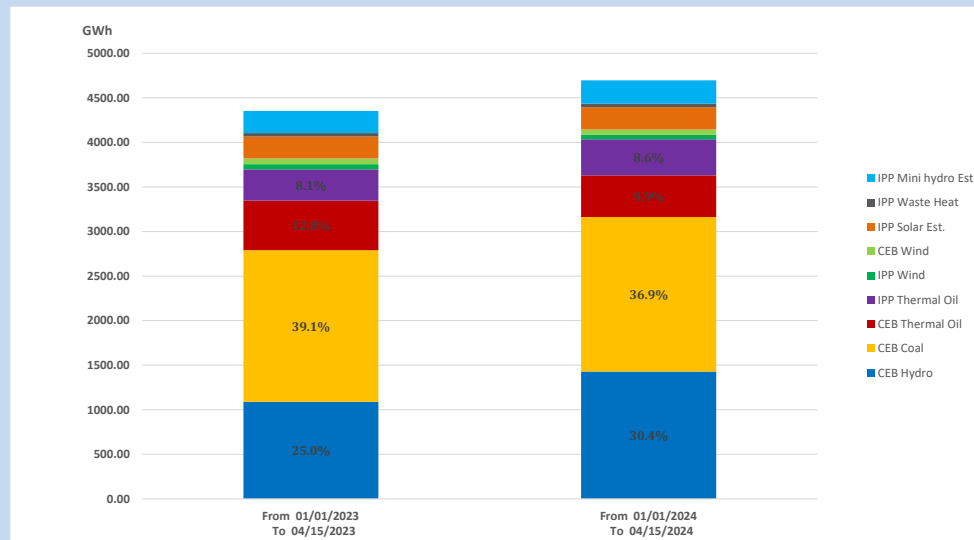
Solar Generation during

April 15, 2024

Based on Telemetered Power Stations only



15. Cumulative Dispatch Comparison with Last Year



Cumulative dispatch

From 01/01/2023 To 04/15/2023

4354 GWh

From 01/01/2024 To 04/15/2024

4695 GWh

The above figures are including contribution from roof top solar, non telemetered solar and mini hydro plants)

Unserviced energy due to power cuts has been excluded in 2023

Thermal Plant Fuel types

Table 08

Power Station	Primary Fuel
CEB Thermal	
Sapugaskanda 1	Heavy Fuel
Sapugaskanda 2	Heavy Fuel
Kelanitissa Small Gas Turbines	Auto Diesel
GT 7 - Kelanitissa	Auto Diesel
Kelanitissa CCY	Naphtha or Diesel
Lakvijaya 1	Coal
Lakvijaya 2	Coal
Lakvijaya 3	Coal
Uthuru Janani	Heavy Fuel
Barge CEB	Heavy Fuel
KCCPS -2	Auto Diesel

Power Station	Primary Fuel
Private Thermal	
West Coast	Auto Diesel / Heavy Fuel

Major Incidents reported during the day

April 15, 2024

- 1) LVPS unit 03 de-loaded to 143MW (net) at 09:03 hrs due to primary air fan 'A' bearing temperature high alarm. The LVPS unit 03 is yet to reach full load.
- 2) Seethawaka - Broadlands 132kV cct manually switched off at 15:01hrs due to the 'CB Gas low-pressure lock' alarm at Seethawaka end. The cct is yet to be normalized.