

Generation and Reservoirs Statistics

April 10, 2024



PUBLIC UTILITIES COMMISSION OF SRI LANKA

1. Daily Generation Mix in MWh

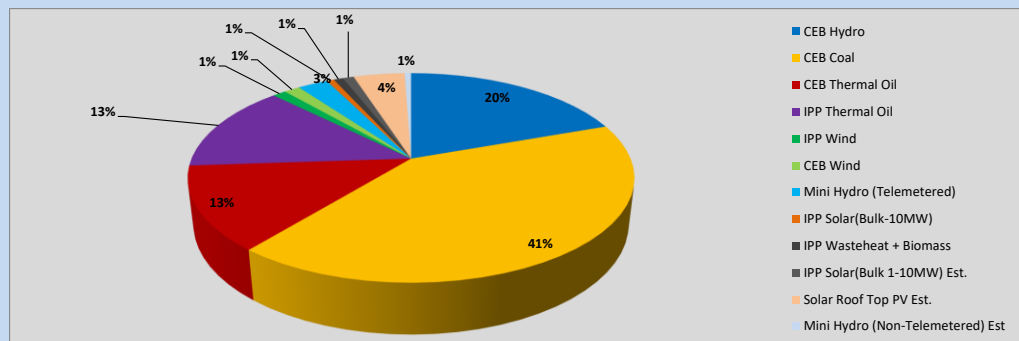


Table 01

	Generation (MWh)
CEB Hydro	9,169
CEB Coal	19,403
CEB Thermal Oil	6,104
IPP Thermal Oil	6,350
IPP Wind	538
CEB Wind	646
Mini Hydro (Telemetered)	1,228
IPP Solar (Bulk)	297
IPP Waste heat + Biomass	384
Total Generation (Excluding estimated figures)	44,119
* Estimated unserved energy	0
* Estimated Mini Hydro (Non telemetered)	262
* Estimated IPP Solar PV (Bulk 1-10MW)	445
* Estimated Solar Roof Top PV	2080
Total Generation (Including estimated figures)	46,906

* Estimated figures of CEB generation report

Table 02

	Installed Capacity (MW)
CEB Hydro	1644
CEB Coal	810
CEB Thermal Oil	773.1
IPP Thermal Oil (West Coast)	270
IPP Wind	163
CEB Wind	100
Mini Hydro	422
IPP Waste heat + Biomass	54
IPP Solar	137
Rooftop Solar (Ordinary)	293
Rooftop Solar (LT Bulk)	272
Rooftop Solar (HT Bulk)	74

Data Source - Monthly Review Report [Nov-2023]

2. Cumulative Dispatch

Following data excludes the contribution from roof top solar, non telemetered solar and mini hydro plants

Table 03 - Current Month

Category	Dispatch (GWh)	
CEB Hydro	114	23.15%
CEB Coal	194	39.66%
CEB Thermal Oil	69	14.07%
IPP Thermal	59	12.07%
SPP Wind	2	0.50%
CEB Wind	2	0.47%
Mini Hydro *	17	3.55%
IPP Solar *	29	5.85%
IPP Waste heat + BMP	3	0.68%
Total	490	

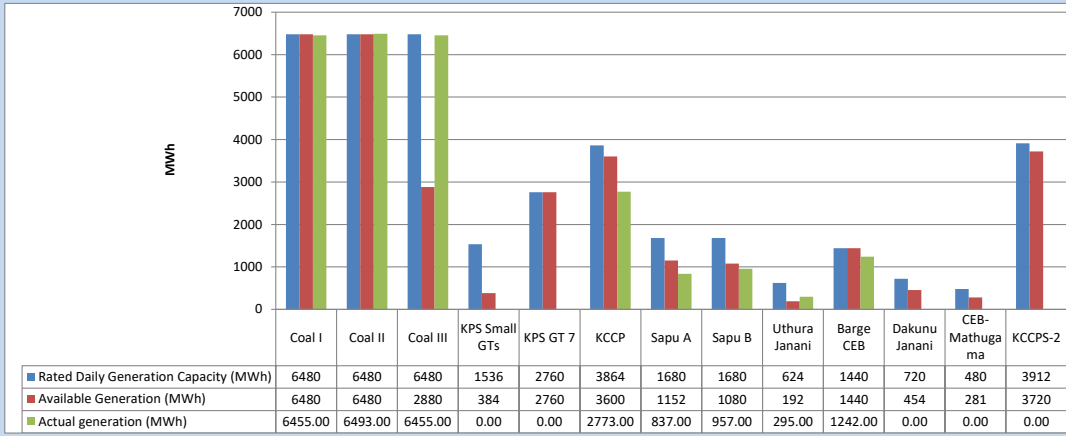
Table 04 - Current Year

Category	Dispatch (GWh)	
CEB Hydro	1,377	30.46%
CEB Coal	1,671	36.97%
CEB Thermal Oil	448	9.92%
IPP Thermal	391	8.64%
SPP Wind	49	1.08%
CEB Wind	57	1.27%
Mini Hydro *	253	5.59%
IPP Solar *	238	5.26%
IPP Waste heat	37	0.81%
Total	4,520	

*Including estimated contribution from non telemetered plants

3. CEB owned Thermal Plant Dispatch

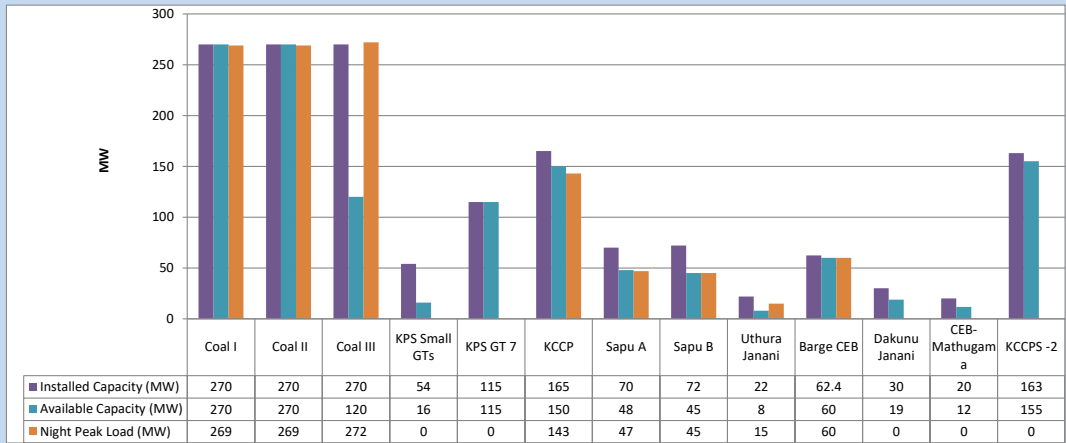
April 10, 2024



Available Generation is estimated based on plant availability at 6.00am on

April 11, 2024

4. CEB owned Thermal Plant Loading at the Night Peak

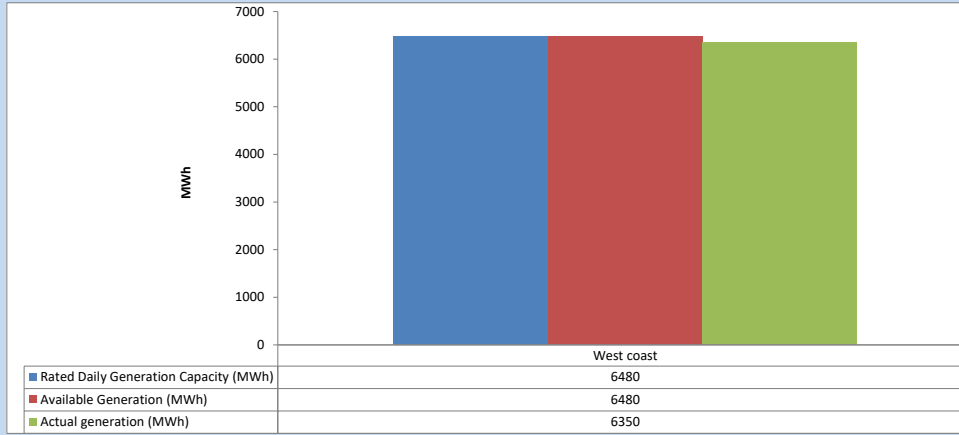


Plant availability is recorded at 6.00 am on

April 11, 2024

5. IPP owned Thermal Plant Dispatch

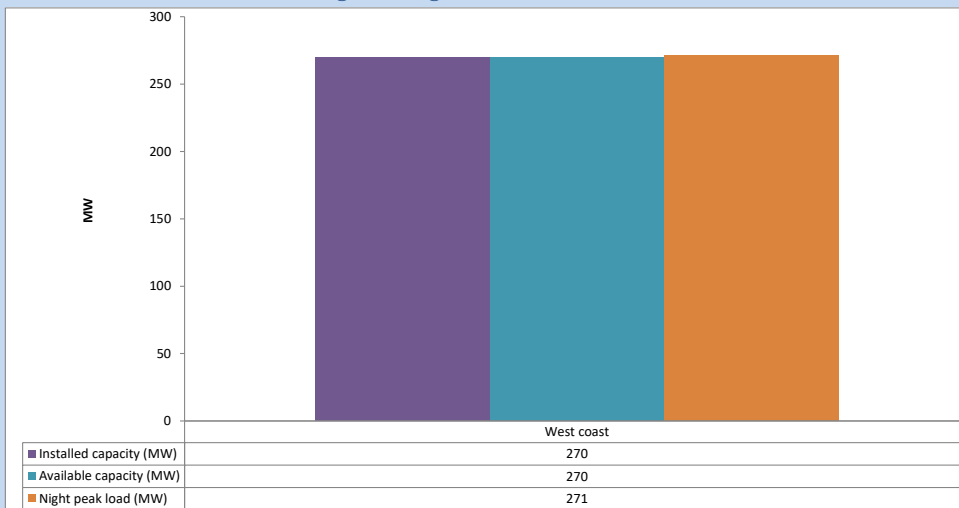
April 10, 2024



Available Generation is estimated based on plant availability at 6.00am on

April 11, 2024

6. IPP owned Thermal Plant Loading at the Night Peak

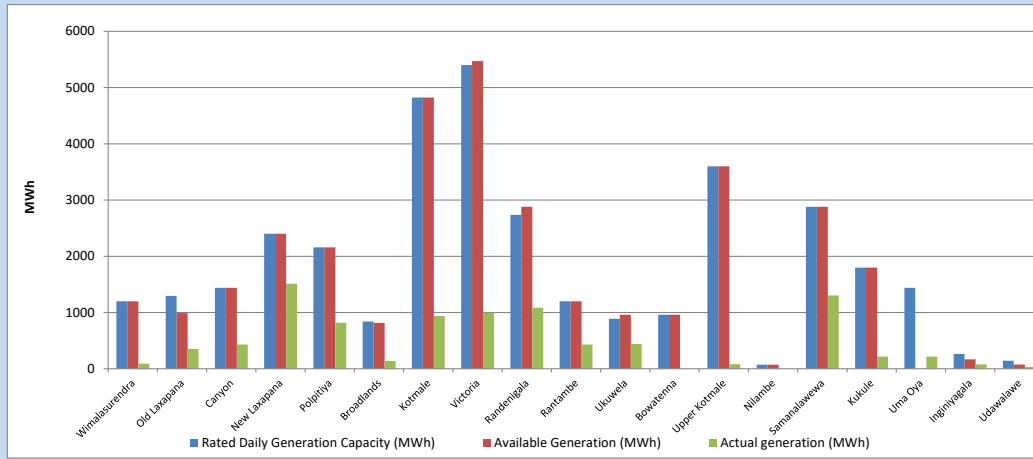


Plant availability is recorded at 6.00 am on

April 11, 2024

7. Major Hydro Plant Dispatch

April 10, 2024

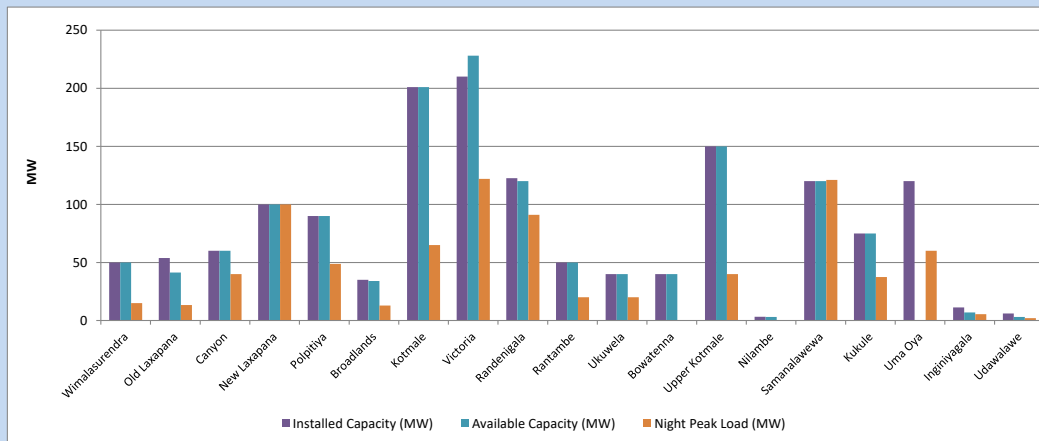


Available Generation is estimated based on plant availability at 6.00am on
Broadlands power plant is operating in the Commissioning Stage

April 11, 2024

8. Major Hydro Plant Loading at Night Peak

April 10, 2024



Plant availability is recorded at 6.00 am on
Broadlands power plant is operating in the Commissioning Stage

April 11, 2024

9. Summary of Major Plant performance

Table 05

Plant	Maximum Available Total Capacity	Plant Availability	Night peak Load	Plant Dispatch
	(MW)	(MW)	(MW)	(MWh)
Wimalasurendra	50	50	15	89
Old Laxapana	54	41	13	351
Canyon	60	60	40	433
New Laxapana	100	100	100	1,514
Polpitiya	90	90	49	820
Broadlands	35	34	13	140
Kotmale	201	201	65	940
Victoria	210	228	122	995
Randenigala	123	120	91	1,086
Rantambe	50	50	20	433
Ukuwela	40	40	20	442
Bowatenna	40	40	0	0
Upper Kotmale	150	150	40	80
Nilambe	3	3	0	0
Samanalawewa	120	120	121	1,303
Kukule	75	75	38	217
Uma Oya (Testing)	120	0	60	216
Inginiyagala	11	7	5	78
Udawalawe	6	3	2	32
Puttalam Coal I	270	270	269	6,455
Puttalam Coal II	270	270	269	6,493
Puttalam Coal III	270	120	272	6,455
KPS Small GTs	54	16	0	0
KPS GT 7	115	115	0	0
KCCP	165	150	143	2,773
Sapugaskanda A	70	48	47	837
Sapugaskanda B	72	45	45	957
Uthura Janani	22	8	15	295
Barge CEB	62	60	60	1,242
CEB-Hambantota	30	19	0	0
CEB-Mathugama	20	12	0	0
ACE Matara	24	0	0	0
Asia Power	50	0	0	0
KCCPS -2	163	155	0	0
West Coast	270	270	271	6,350
Nothern Power	36	0	0	0
ACE Embilipitiya	93	0	0	0
Total	3,594	2,970	2,320	44,119

Note-

Plant availability is the availability recorded at 6 am on

April 11, 2024

Installed Capacity is sourced from CEB Annual Report- 2022

10. Contribution to the Night Peak in MW

April 10, 2024

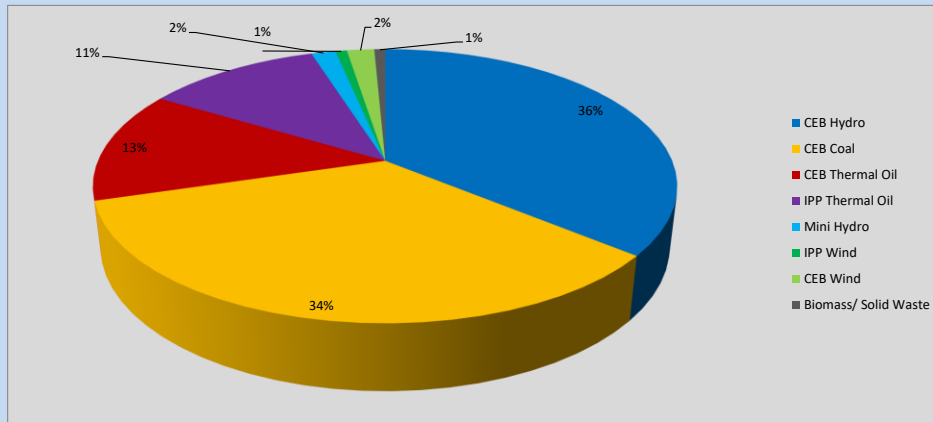


Table 06

CEB Hydro	845	MW
CEB Coal	810	MW
CEB Thermal Oil	310	MW
IPP Thermal Oil	271	MW
Mini Hydro (Telemetered)	38	MW
IPP Wind	17.8	MW
CEB Wind	42.6	MW
Biomass/ Solid Waste	17	MW

Recorded Peak Demand Data

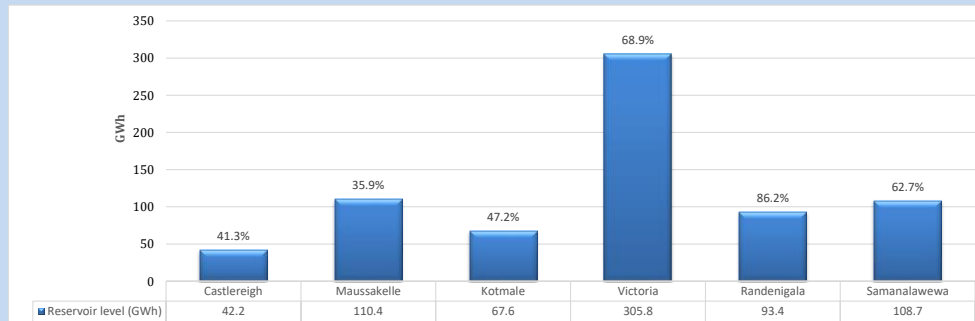
Table 07

Night Peak*	2,351	MW
Day Peak Maximum Demand	2,078	MW
Day Peak Minimum Demand	1,664	MW
Off Peak Minimum Demand	1,547	MW

Above figures are excluding contribution from roof top solar, non telemetered solar and mini hydro plants

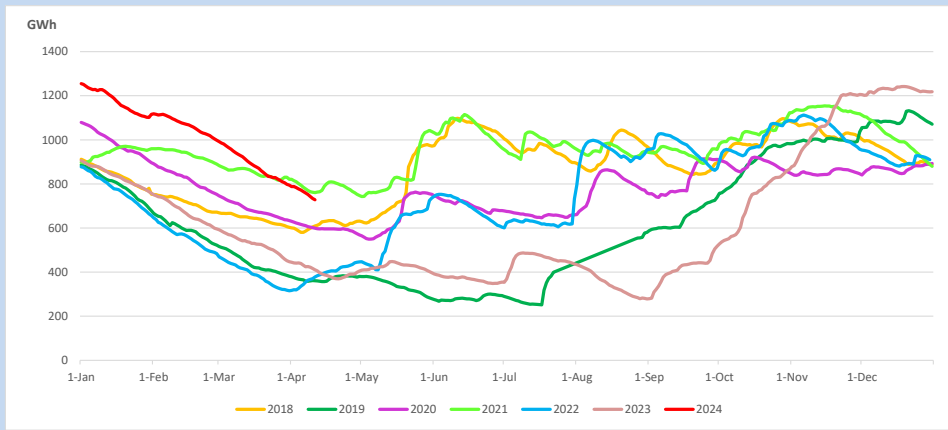
Reservoir Levels -

as at 06.00 Hr on April 11, 2024

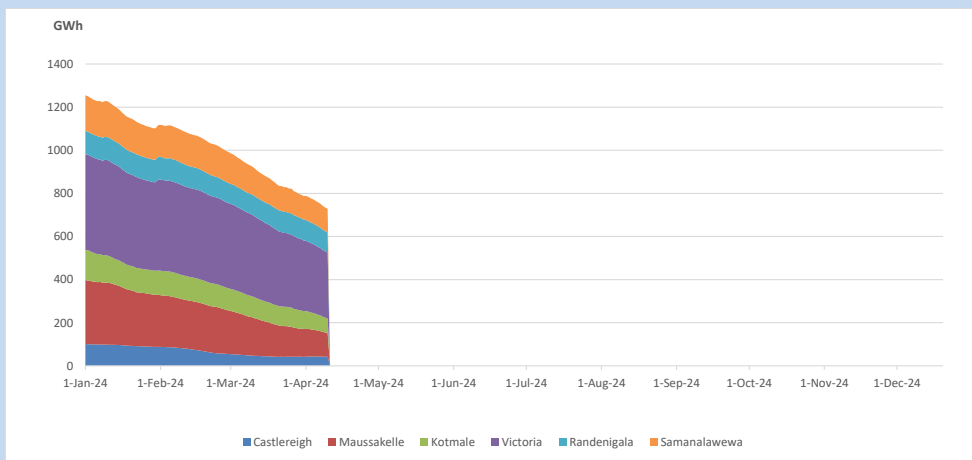


Total Reservoir Level 728.1 GWh
% of Total capacity 57.0%

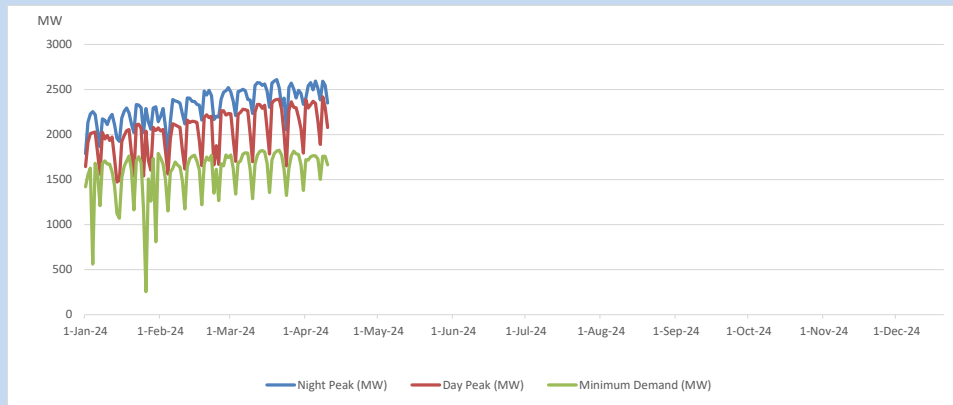
11. Comparison of Total Reservoir Storage Levels with Past Years



12. Variation of Major Hydro Reservoir Levels in the current year (GWh)



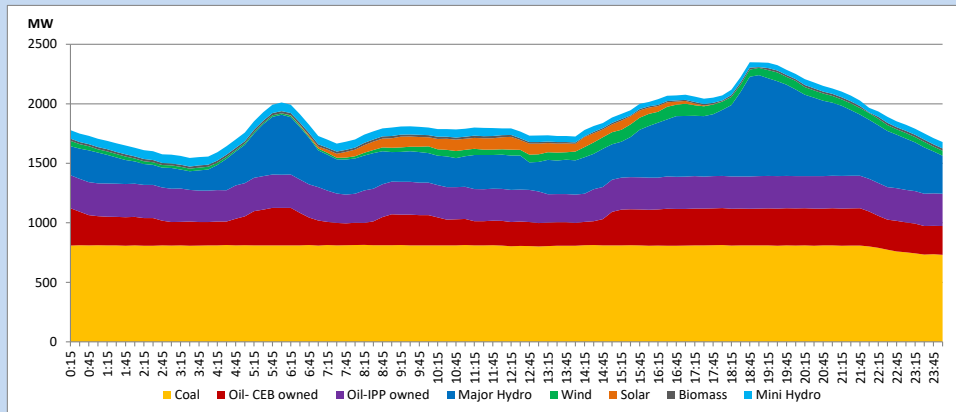
13. Variation of Demand during the current year



The above figures are excluding contribution from roof top solar, non telemetered solar and mini hydro plants

14. Daily Load Curve

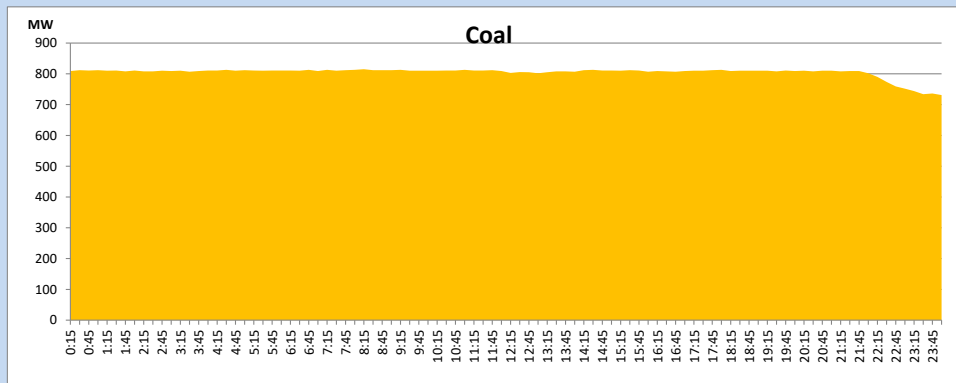
April 10, 2024



Solar and wind data is based on Telemetered Power Stations only

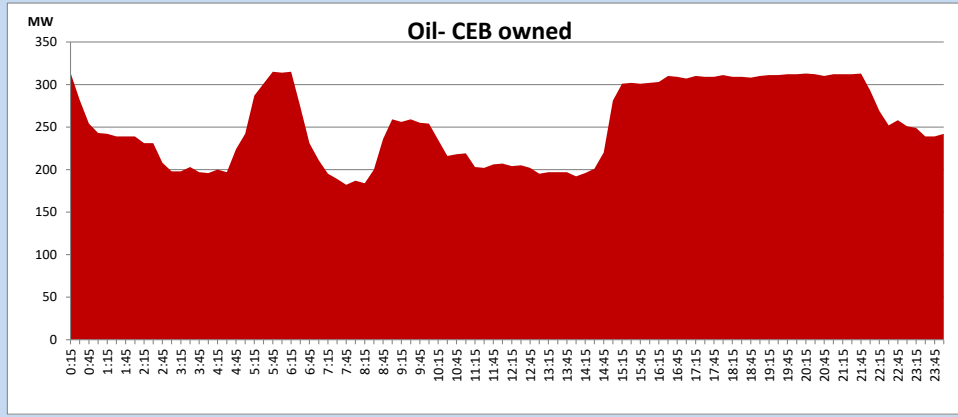
Coal Generation during

April 10, 2024



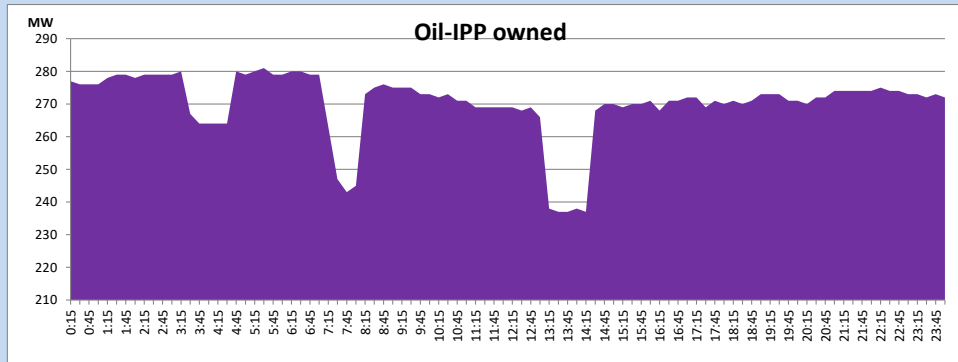
CEB Oil Plant Generation during

April 10, 2024



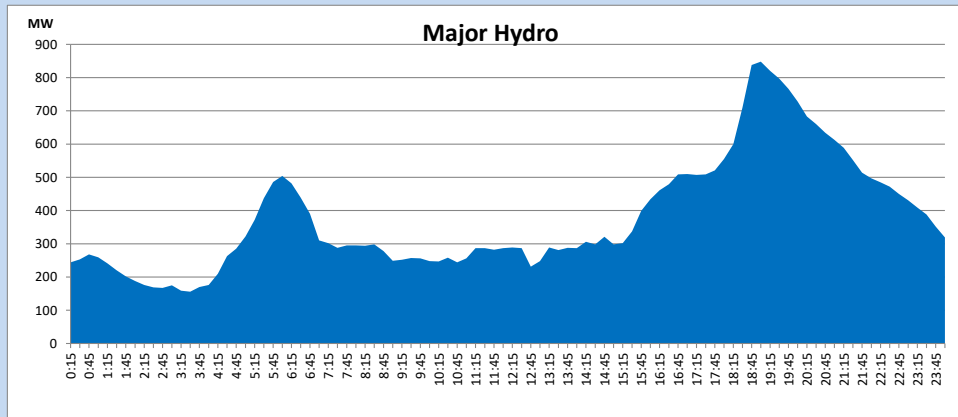
IPP Oil Plant Generation during

April 10, 2024



Major Hydro Generation during

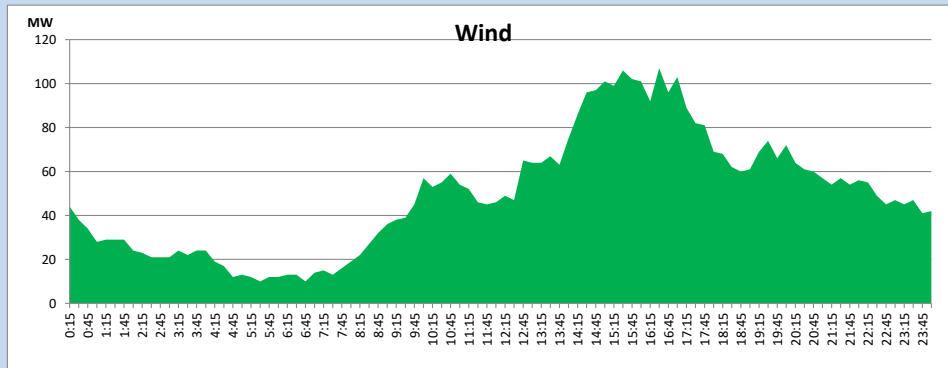
April 10, 2024



Wind Generation during

April 10, 2024

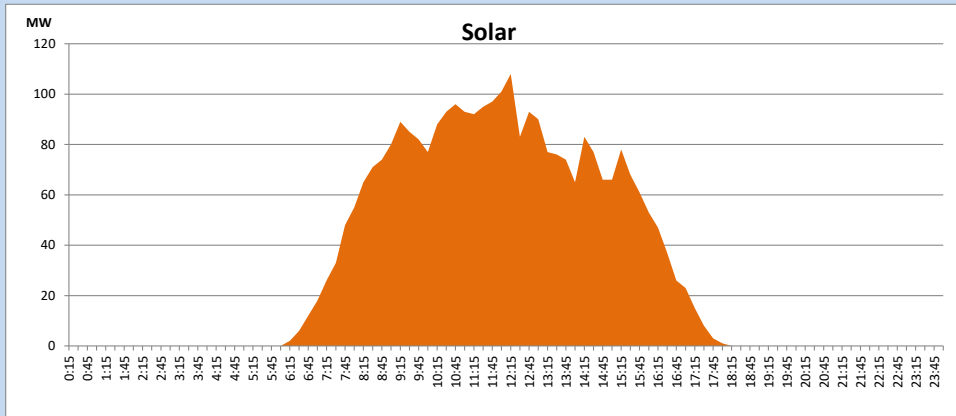
Based on Telemetered Power Stations only



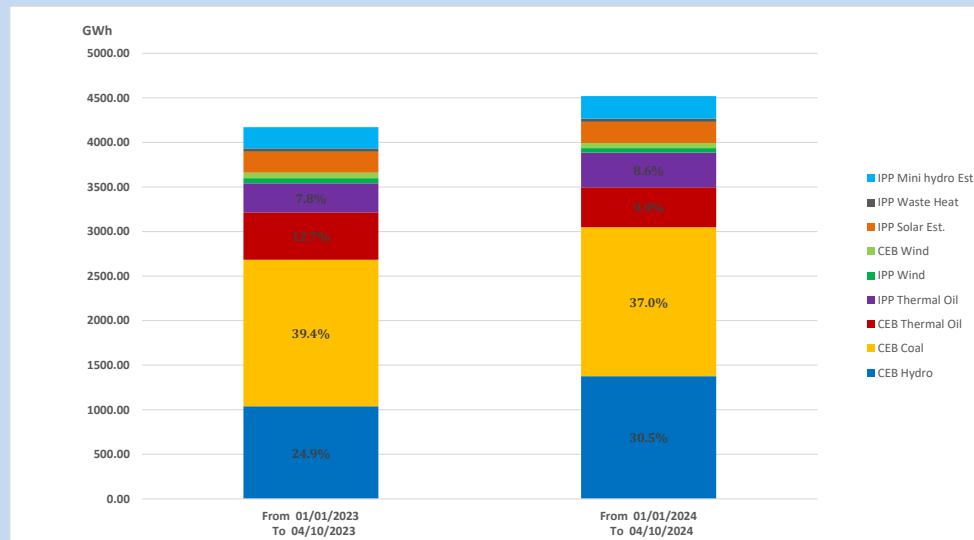
Solar Generation during

April 10, 2024

Based on Telemetered Power Stations only



15. Cumulative Dispatch Comparison with Last Year



Cumulative dispatch
 From 01/01/2023 To 04/10/2023
 From 01/01/2024 To 04/10/2024

4170 GWh
 4520 GWh

The above figures are including contribution from roof top solar, non telemetered solar and mini hydro plants)
 Unused energy due to power cuts has been excluded in 2023

Thermal Plant Fuel types

Table 08

Power Station	Primary Fuel
CEB Thermal	
Sapugaskanda 1	Heavy Fuel
Sapugaskanda 2	Heavy Fuel
Kelanitissa Small Gas Turbines	Auto Diesel
GT 7 - Kelanitissa	Auto Diesel
Kelanitissa CCY	Naphtha or Diesel
Lakvijaya 1	Coal
Lakvijaya 2	Coal
Lakvijaya 3	Coal
Uthuru Janani	Heavy Fuel
Barge CEB	Heavy Fuel
KCCPS -2	Auto Diesel

Power Station	Primary Fuel
Private Thermal	
West Coast	Auto Diesel / Heavy Fuel

Major Incidents reported during the day

April 10, 2024

- 1) KCCP-PS-02 was made available at 20:55hrs, after the planned outage of GT filter replacement.