

Generation and Reservoirs Statistics

February 29, 2024



PUBLIC UTILITIES COMMISSION OF SRI LANKA

1. Daily Generation Mix in MWh

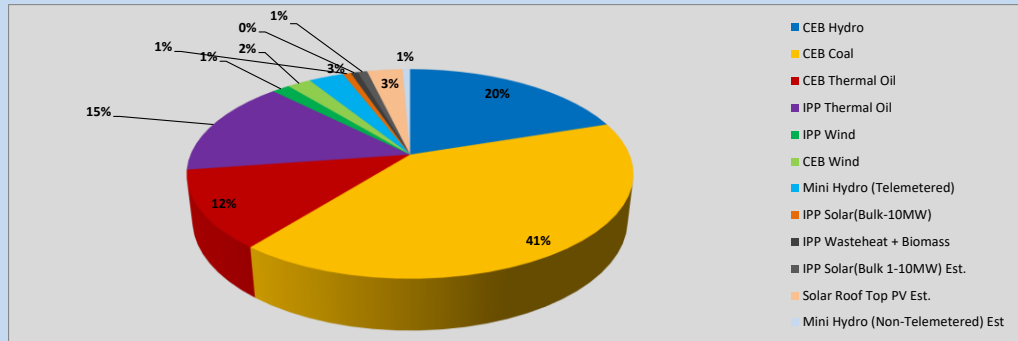


Table 01

	Generation (MWh)
CEB Hydro	9,525
CEB Coal	19,511
CEB Thermal Oil	5,746
IPP Thermal Oil	7,094
IPP Wind	742
CEB Wind	978
Mini Hydro (Telemetered)	1,457
IPP Solar (Bulk)	328
IPP Waste heat + Biomass	296
Total Generation (Excluding estimated figures)	45,677
* Estimated unserved energy	0
* Estimated Mini Hydro (Non telemetered)	311
* Estimated IPP Solar PV (Bulk 1-10MW)	394
* Estimated Solar Roof Top PV	1470
Total Generation (Including estimated figures)	47,852

* Estimated figures of CEB generation report

Table 02

	Installed Capacity (MW)
CEB Hydro	1644
CEB Coal	810
CEB Thermal Oil	773.1
IPP Thermal Oil (West Coast and ACE Embilipitiya)	362.9
IPP Wind	163
CEB Wind	100
Mini Hydro	422
IPP Waste heat + Biomass	54
IPP Solar	137
Rooftop Solar (Ordinary)	293
Rooftop Solar (LT Bulk)	272
Rooftop Solar (HT Bulk)	74

Data Source - Monthly Review Report [Nov-2023]

2. Cumulative Dispatch

Following data excludes the contribution from roof top solar, non telemetered solar and mini hydro plants

Table 03 - Current Month

Category	Dispatch (GWh)	
CEB Hydro	307	24.07%
CEB Coal	556	43.60%
CEB Thermal Oil	101	7.93%
IPP Thermal	123	9.65%
SPP Wind	19	1.52%
CEB Wind	22	1.74%
Mini Hydro *	72	5.63%
IPP Solar *	63	4.94%
IPP Waste heat + BMP	11	0.89%
Total	1,275	

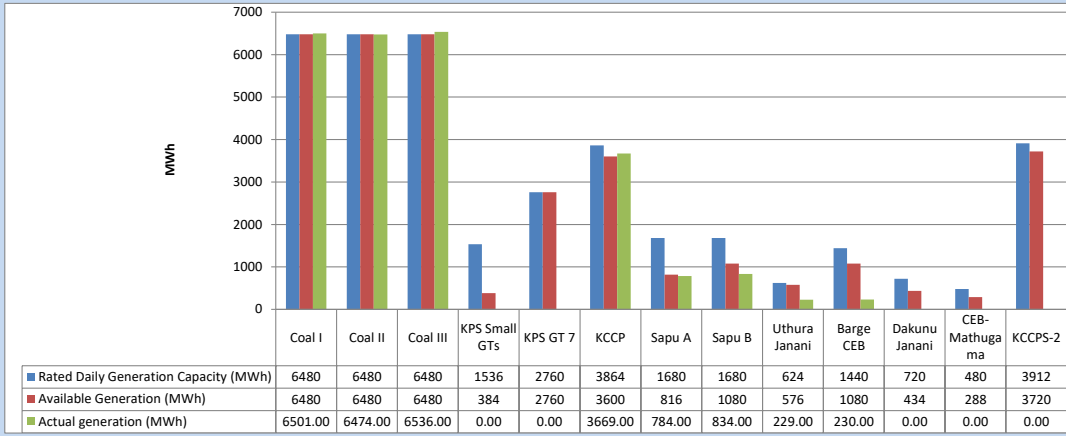
Table 04 - Current Year

Category	Dispatch (GWh)	
CEB Hydro	938	36.49%
CEB Coal	880	34.22%
CEB Thermal Oil	159	6.17%
IPP Thermal	169	6.56%
SPP Wind	36	1.40%
CEB Wind	44	1.72%
Mini Hydro *	191	7.42%
IPP Solar *	132	5.15%
IPP Waste heat	22	0.87%
Total	2,571	

*Including estimated contribution from non telemetered plants

3. CEB owned Thermal Plant Dispatch

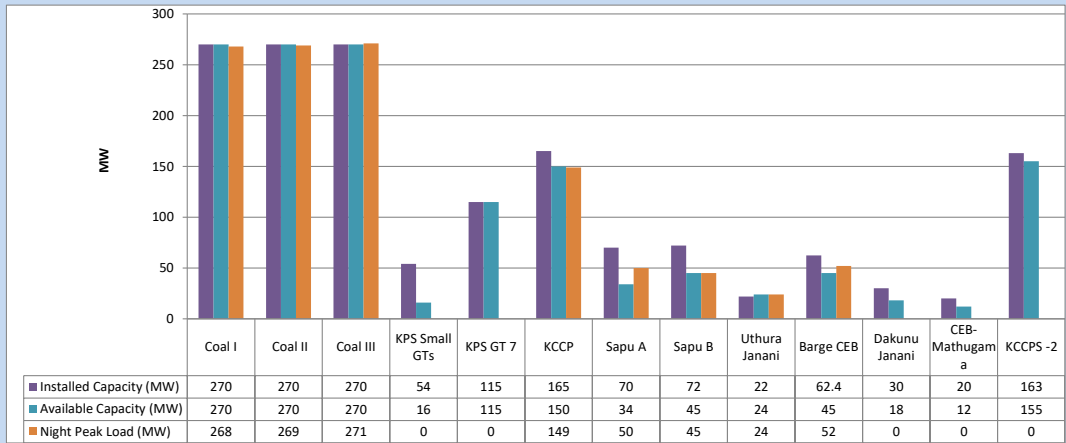
February 29, 2024



Available Generation is estimated based on plant availability at 6.00am on

March 1, 2024

4. CEB owned Thermal Plant Loading at the Night Peak

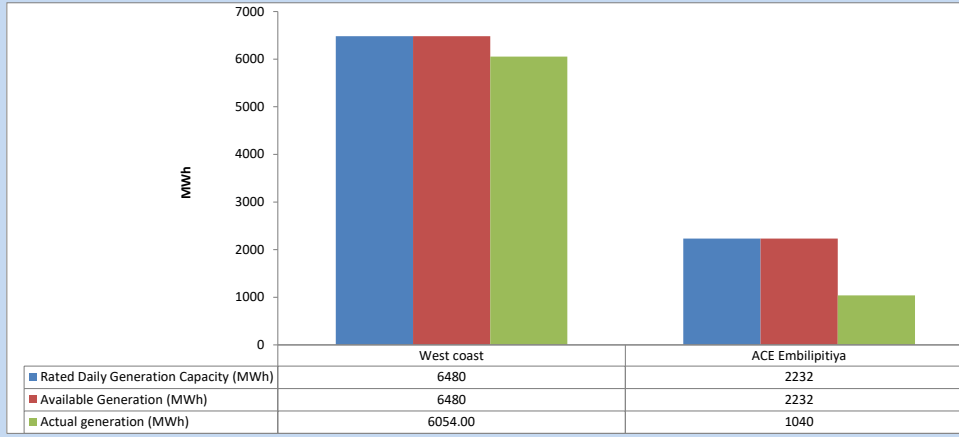


Plant availability is recorded at 6.00 am on

March 1, 2024

5. IPP owned Thermal Plant Dispatch

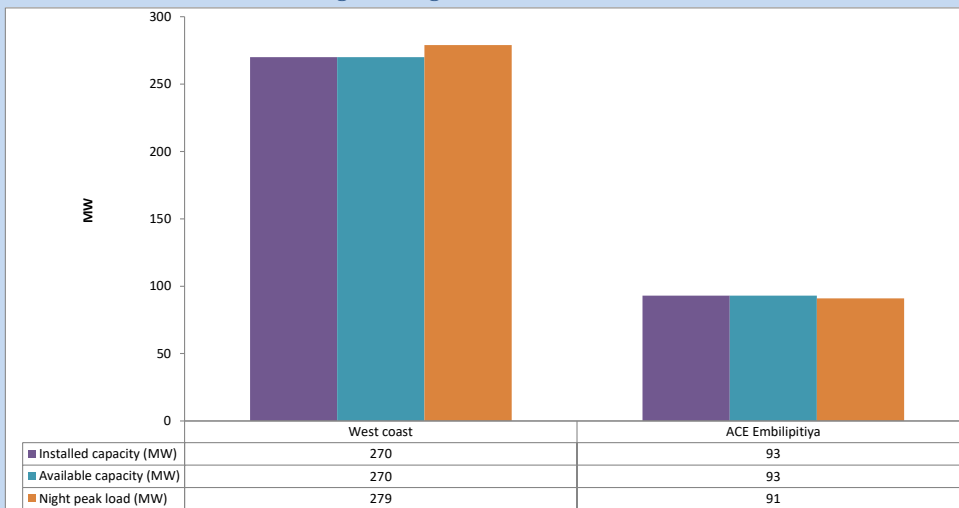
February 29, 2024



Available Generation is estimated based on plant availability at 6.00am on

March 1, 2024

6. IPP owned Thermal Plant Loading at the Night Peak

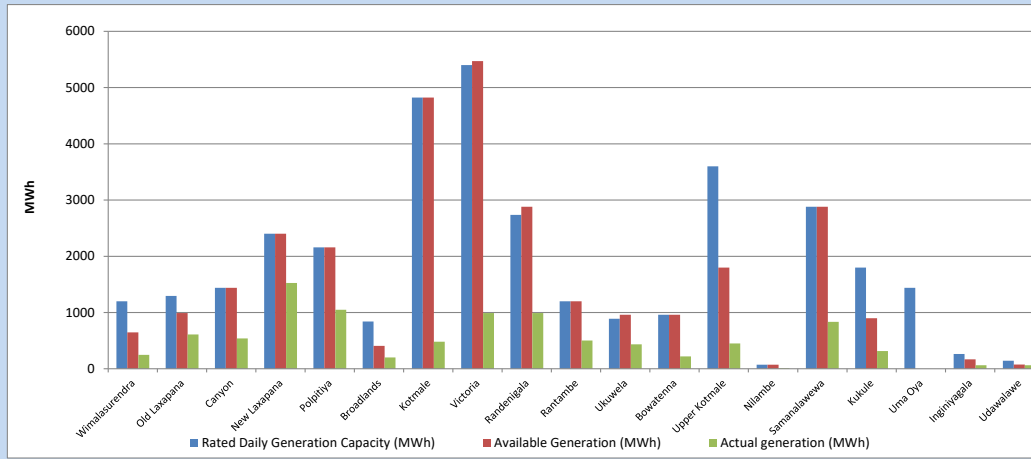


Plant availability is recorded at 6.00 am on

March 1, 2024

7. Major Hydro Plant Dispatch

February 29, 2024

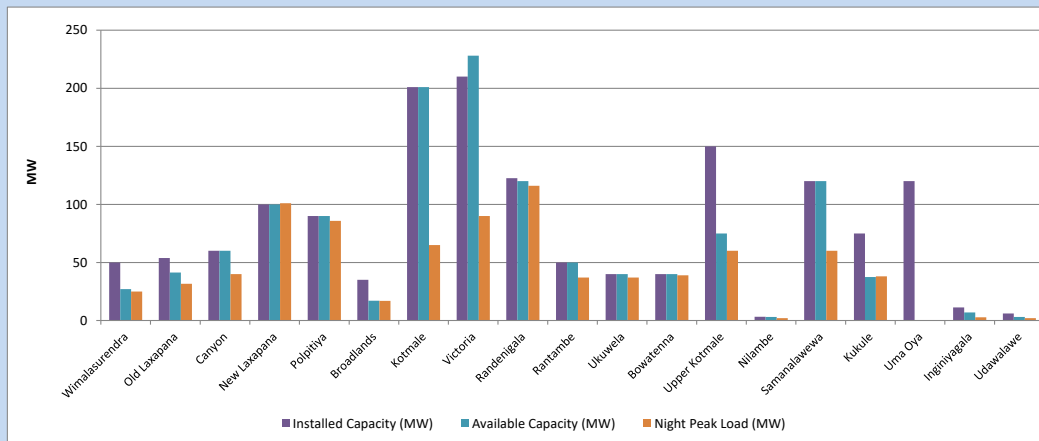


Available Generation is estimated based on plant availability at 6.00am on
Broadlands power plant is operating in the Commissioning Stage

March 1, 2024

8. Major Hydro Plant Loading at Night Peak

February 29, 2024



Plant availability is recorded at 6.00 am on
Broadlands power plant is operating in the Commissioning Stage

March 1, 2024

9. Summary of Major Plant performance

Table 05

Plant	Maximum Available Total Capacity	Plant Availability	Night peak Load	Plant Dispatch
	(MW)	(MW)	(MW)	(MWh)
Wimalasurendra	50	27	25	247
Old Laxapana	54	41	32	611
Canyon	60	60	40	540
New Laxapana	100	100	101	1,524
Polpitiya	90	90	86	1,050
Broadlands	35	17	17	200
Kotmale	201	201	65	480
Victoria	210	228	90	991
Randenigala	123	120	116	991
Rantambe	50	50	37	501
Ukuwela	40	40	37	436
Bowatenna	40	40	39	219
Upper Kotmale	150	75	60	450
Nilambe	3	3	2	12
Samanalawewa	120	120	60	833
Kukule	75	38	38	315
Uma Oya (Testing)	120	0	0	0
Inginiyagala	11	7	3	63
Udawalawe	6	3	2	62
Puttalam Coal I	270	270	268	6,501
Puttalam Coal II	270	270	269	6,474
Puttalam Coal III	270	270	271	6,536
KPS Small GTs	54	16	0	0
KPS GT 7	115	115	0	0
KCCP	165	150	149	3,669
Sapugaskanda A	70	34	50	784
Sapugaskanda B	72	45	45	834
Uthura Janani	22	24	24	229
Barge CEB	62	45	52	230
CEB-Hambantota	30	18	0	0
CEB-Mathugama	20	12	0	0
ACE Matara	24	0	0	0
Asia Power	50	0	0	0
KCCPS -2	163	155	0	0
West Coast	270	270	279	6,054
Nothern Power	36	0	0	0
ACE Embilipitiya	93	93	91	1,040
Total	3,594	3,047	2,509	45,677

Note-

Plant availability is the availability recorded at 6 am on

March 1, 2024

Installed Capacity is sourced from CEB Annual Report- 2022

10. Contribution to the Night Peak in MW

February 29, 2024

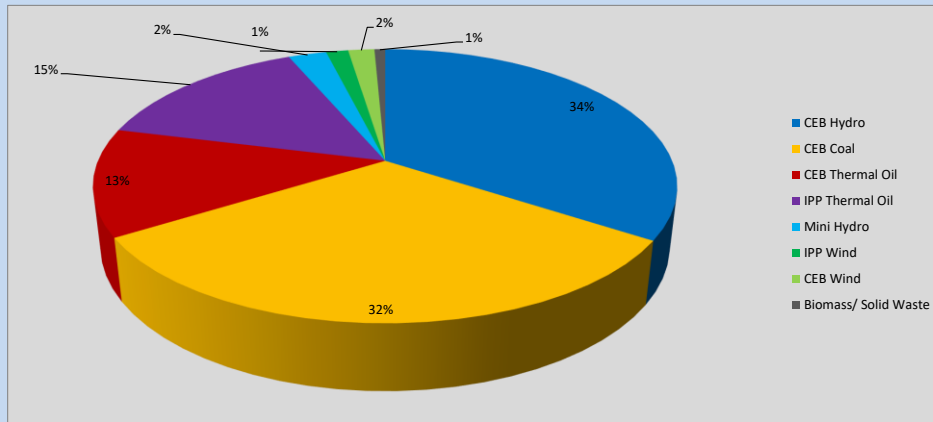


Table 06

CEB Hydro	861	MW
CEB Coal	808	MW
CEB Thermal Oil	320	MW
IPP Thermal Oil	370	MW
Mini Hydro (Telemetered)	64	MW
IPP Wind	36.9	MW
CEB Wind	43.8	MW
Biomass/ Solid Waste	18	MW

Recorded Peak Demand Data

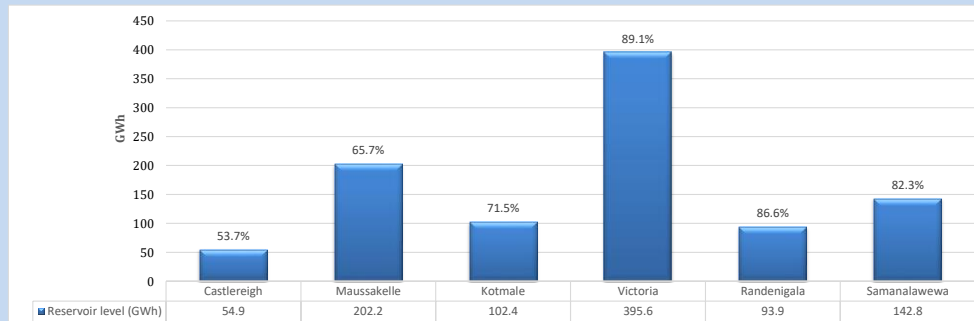
Table 07

Night Peak*	2,521	MW
Day Peak Maximum Demand	2,234	MW
Day Peak Minimum Demand	1,744	MW
Off Peak Minimum Demand	1,467	MW

Above figures are excluding contribution from roof top solar, non telemetered solar and mini hydro plants

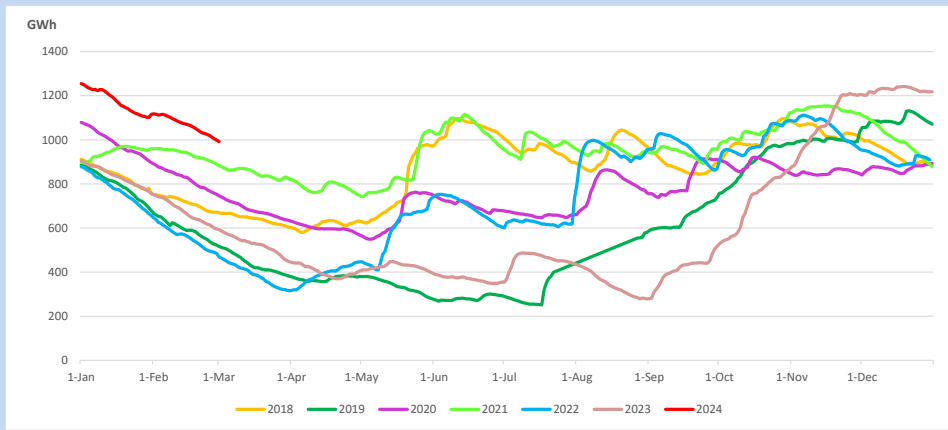
Reservoir Levels -

as at 06.00 Hr on March 1, 2024

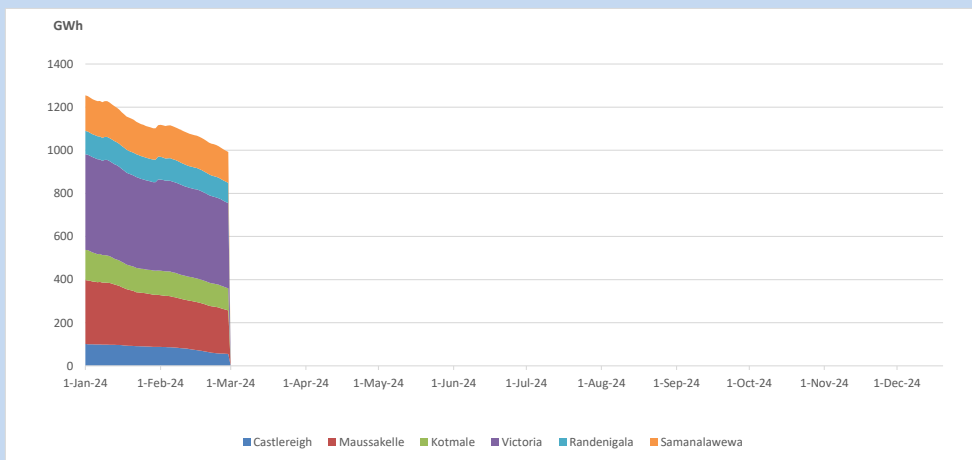


Total Reservoir Level 991.8 GWh
% of Total capacity 77.5%

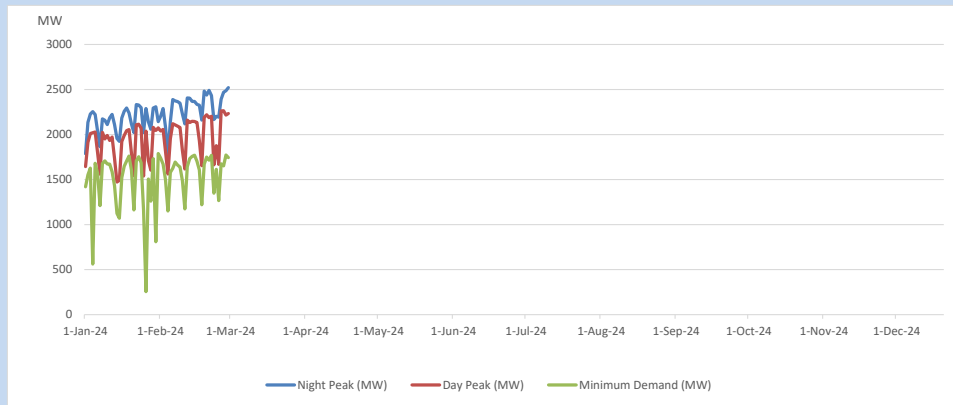
11. Comparison of Total Reservoir Storage Levels with Past Years



12. Variation of Major Hydro Reservoir Levels in the current year (GWh)



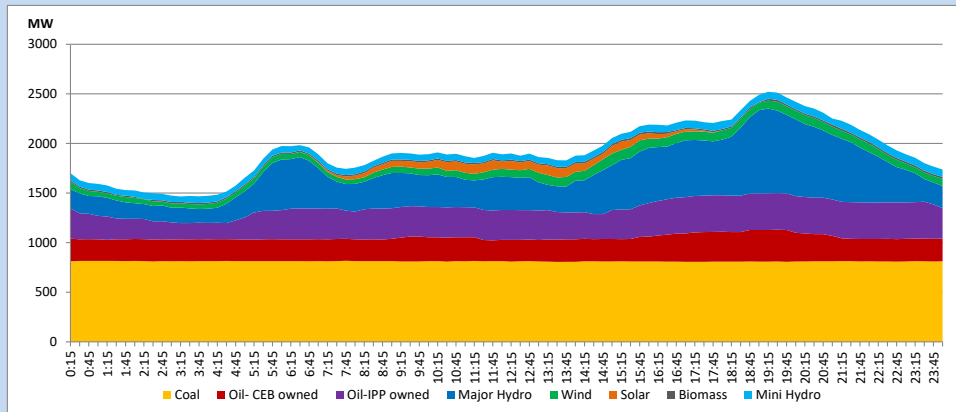
13. Variation of Demand during the current year



The above figures are excluding contribution from roof top solar, non telemetered solar and mini hydro plants

14. Daily Load Curve

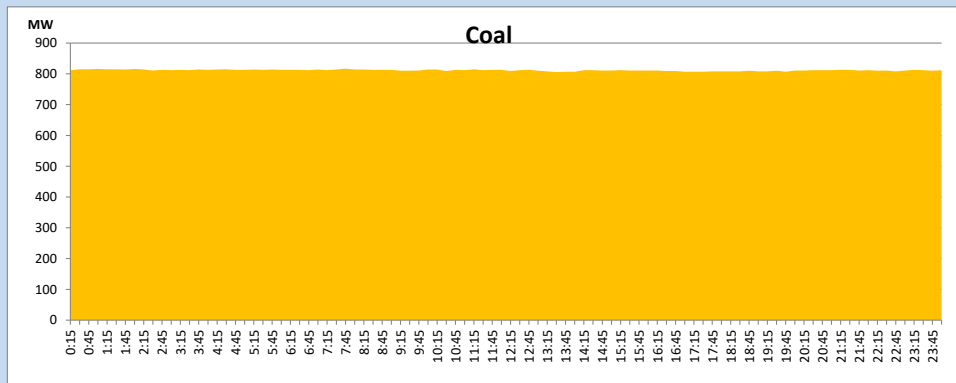
February 29, 2024



Solar and wind data is based on Telemetered Power Stations only

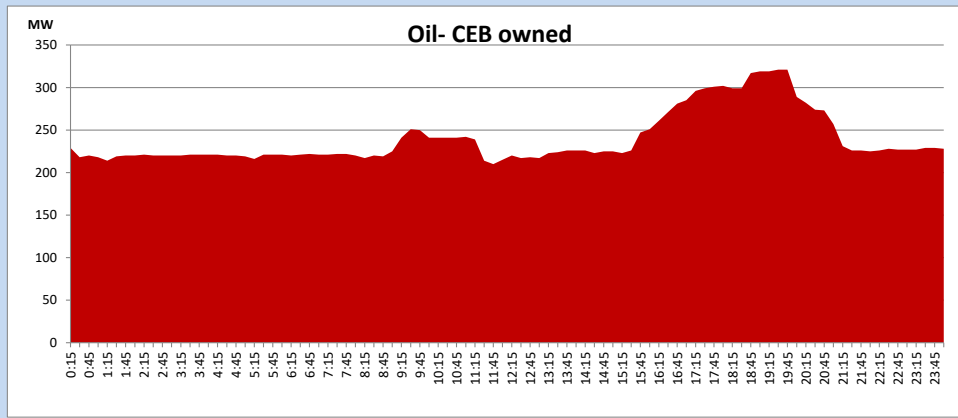
Coal Generation during

February 29, 2024



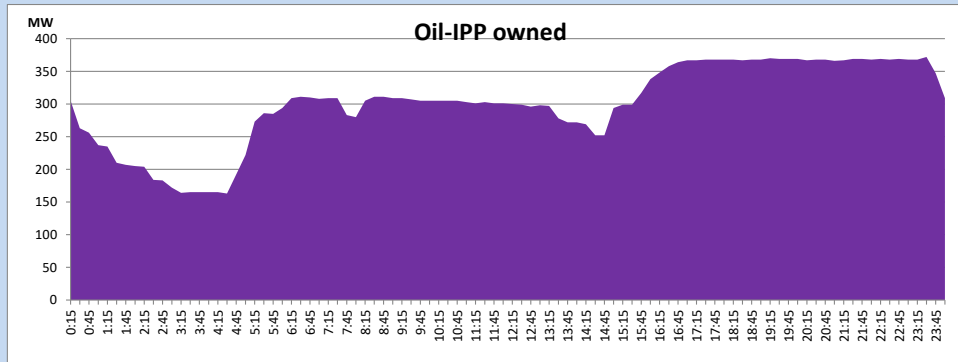
CEB Oil Plant Generation during

February 29, 2024



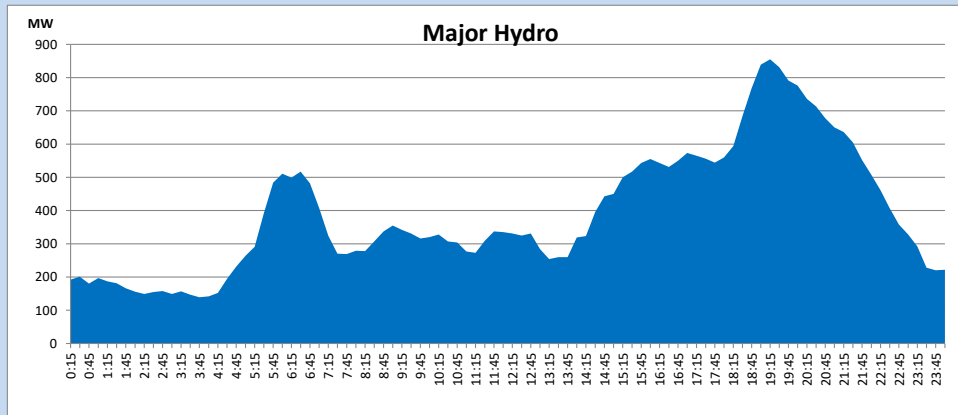
IPP Oil Plant Generation during

February 29, 2024



Major Hydro Generation during

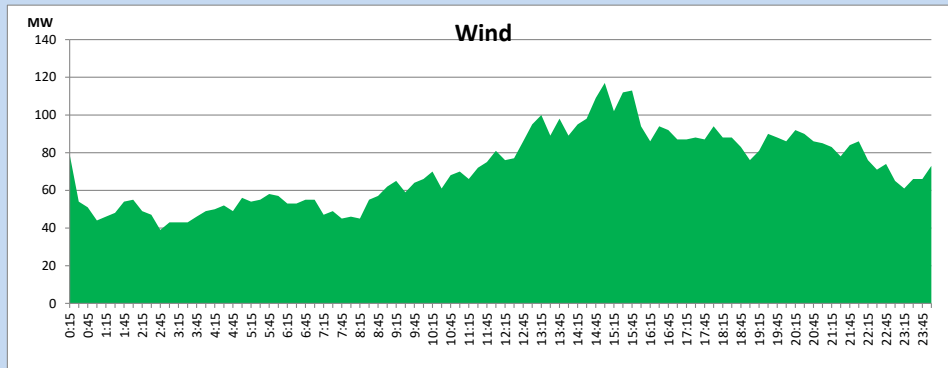
February 29, 2024



Wind Generation during

February 29, 2024

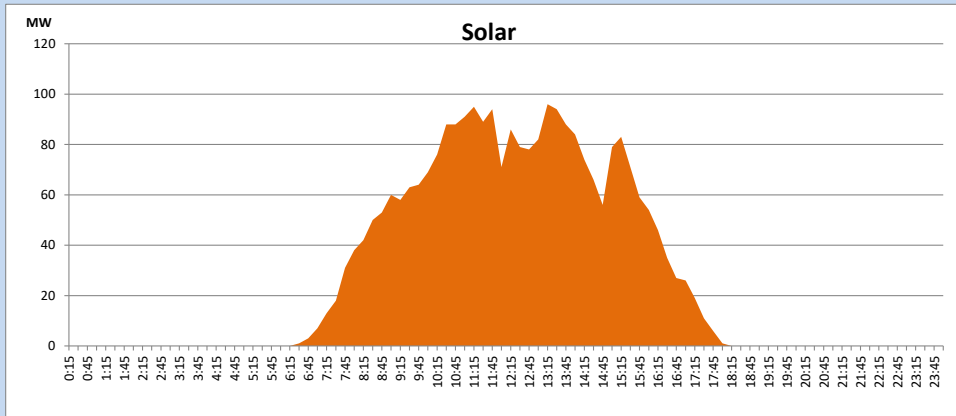
Based on Telemetered Power Stations only



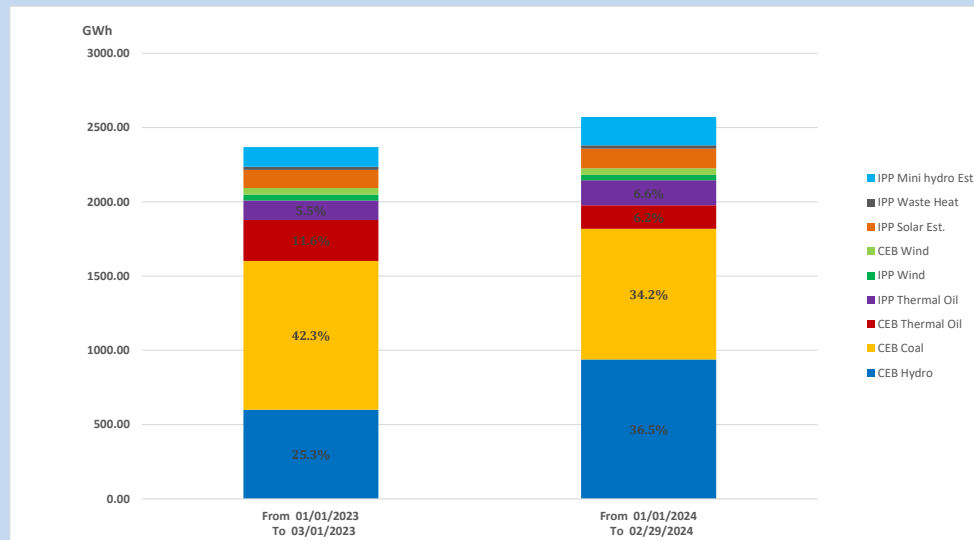
Solar Generation during

February 29, 2024

Based on Telemetered Power Stations only



15. Cumulative Dispatch Comparison with Last Year



Cumulative dispatch

From 01/01/2023 To 02/28/2023

2369 GWh

From 01/01/2024 To 02/29/2024

2571 GWh

The above figures are including contribution from roof top solar, non telemetered solar and mini hydro plants)

Unserviced energy due to power cuts has been excluded in 2023

Thermal Plant Fuel types

Table 08

Power Station	Primary Fuel
CEB Thermal	
Sapugaskanda 1	Heavy Fuel
Sapugaskanda 2	Heavy Fuel
Kelanitissa Small Gas Turbines	Auto Diesel
GT 7 - Kelanitissa	Auto Diesel
Kelanitissa CCY	Naphtha or Diesel
Lakvijaya 1	Coal
Lakvijaya 2	Coal
Lakvijaya 3	Coal
Uthuru Janani	Heavy Fuel
Barge CEB	Heavy Fuel
KCCPS -2	Auto Diesel

Power Station	Primary Fuel
Private Thermal	
West Coast	Auto Diesel / Heavy Fuel
ACE Embilipitiya	Heavy Fuel

Major Incidents reported during the day

February 29, 2024

- 1) Uma oya Unit 02 was synchronized for the first time at 16:02hrs.
- 2) Samanalawewa unit 01 which was unavailable due to synchronizing failure, made available at 23:59hrs.